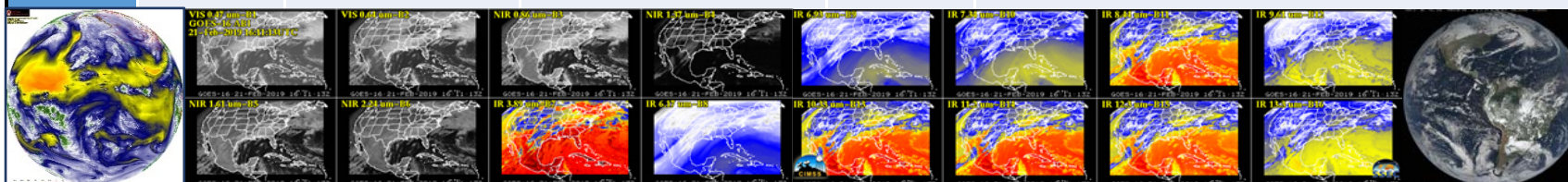




Advanced Baseline Imager (ABI) Band Reference Guide

ABI Band Number	Vis/NIR/IR	Wavelength (in micrometers μm)	Nickname	Resolution (km at nadir)	Energy Detected
1	Visible	0.47 μm	Blue Band	1	Reflected Solar
2	Visible	0.64 μm	Red Band	0.5	Reflected Solar
3	Near IR	0.86 μm	Veggie Band	1	Reflected Solar
4	Near IR	1.38 μm	Cirrus Band	2	Reflected Solar
5	Near IR	1.61 μm	Snow/Ice Band	1	Reflected Solar/Emitted IR (from fires)
6	Near IR	2.24 μm	Cloud Phase Band	2	Reflected Solar/Emitted IR (from fires)
7	IR	3.90 μm	Shortwave IR	2	Reflected Solar/Emitted IR from Earth/Atmosphere
8	IR	6.19 μm	Upper Level Water Vapor	2	Emitted IR from Earth/Atmosphere
9	IR	6.95 μm	Mid-Level Water Vapor	2	Emitted IR from Earth/Atmosphere
10	IR	7.3 μm	Low-Level Water Vapor	2	Emitted IR from Earth/Atmosphere
11	IR	8.4 μm	Infrared Cloud Phase	2	Emitted IR from Earth/Atmosphere
12	IR	9.6 μm	Ozone	2	Emitted IR from Earth/Atmosphere
13	IR	10.3 μm	Clean Window	2	Emitted IR from Earth/Atmosphere
14	IR	11.2 μm	Longwave IR	2	Emitted IR from Earth/Atmosphere
15	IR	12.3 μm	Dirty Window	2	Emitted IR from Earth/Atmosphere
16	IR	13.3 μm	CO ₂	2	Emitted IR from Earth/Atmosphere



Find GOES Data at <https://cimss.ssec.wisc.edu/goes/goesdata.html>