



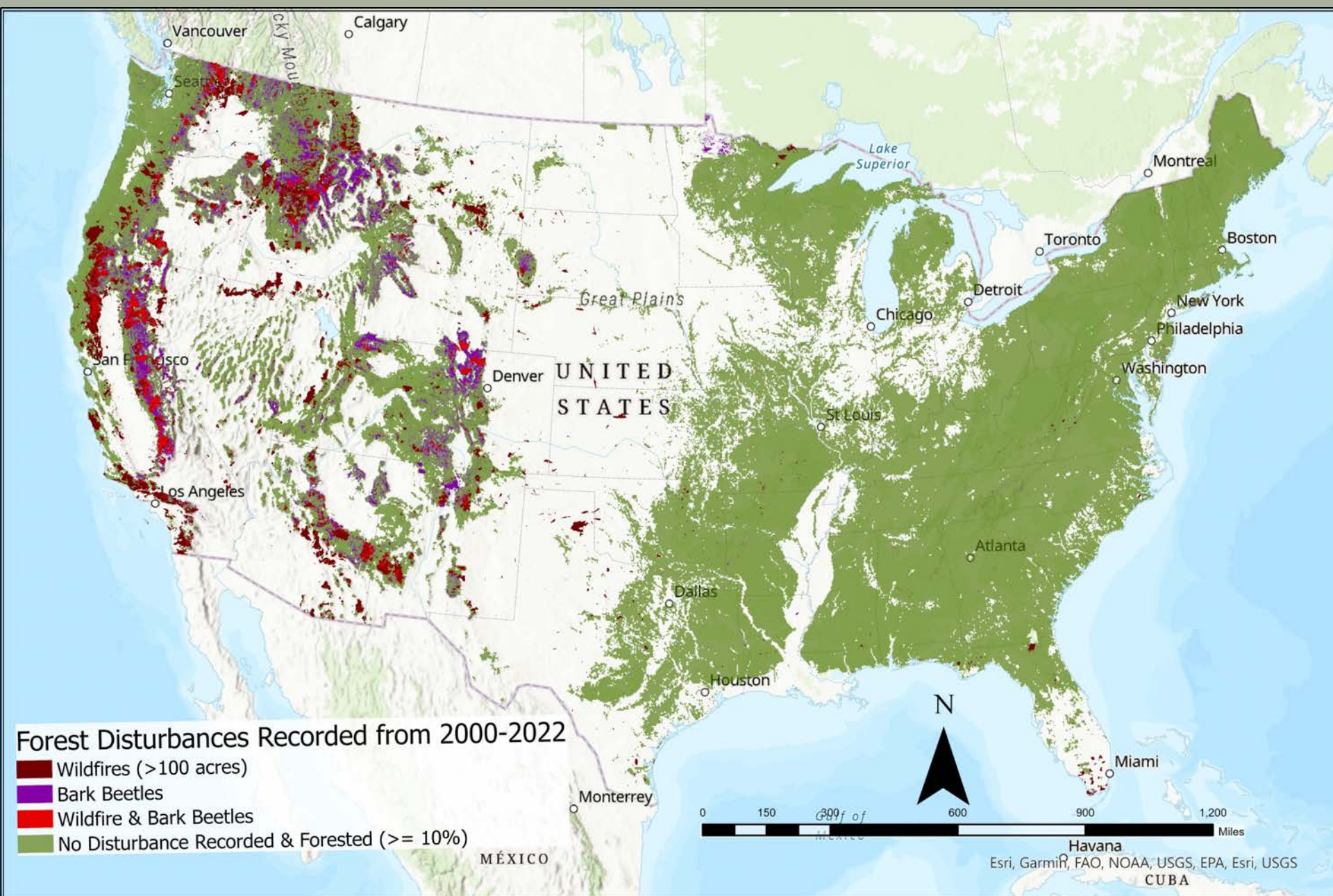
Impact of Multidecadal Wet and Dry Climate Cycles on Forest Disturbances across Conterminous U.S., 2000-2022



Joel M Egan
Forest Health Monitoring Coordinator
U.S. Forest Service
State, Private and Tribal Forestry
Forest Health Protection

Contact:
joel.egan@usda.gov
406-552-5662

Forest fragmentation and microclimate change, along with insect activity (10,40, 10,000) will limit forest health, with bark beetle infestations and wildfires increasing in frequency and intensity. This is due to a combination of factors, including climate change, land use change, and fire exclusion and compartmenting that have amplified a dry cycle in 2000.



U.S. Forest Service

State, Private and Tribal Forestry

Multiple Programs for Funding and Technical Assistance

LANDOWNER ASSISTANCE PROGRAM-

Contact: Jen Hensiek, Forest Stewardship Prog Mgr., (406) 529-8159, jennifer.hensiek@usda.gov

COOPERATIVE FIRE PROGRAM

Contact: Chris Johnson, Coop. Fire Prog. Mgr., (406)529-7751
Christopher.Johnson5@usda.gov

Grant Program	Landscape Scale Restoration	Landowner Assistance	Revegetation	Community Wildfire Defense
Intent:	Promotes collaborative, science-based restoration of priority forest landscapes for a variety of objectives e.g., wildfire risk, water quality and function, and fish & wildlife habitats.	IRA funding to support participation of underserved and small acreage forest landowners in emerging markets for climate mitigation and forest resilience	Technical assistance and BIL funds to modernize existing state and tribal tree nurseries and tree orchard facilities	BIL funding to help at-risk local communities and <u>Tribes</u> plan and reduce the risk against wildfire. Community Wildfire Protection Plan production/revision and implementation are eligible projects.
Request for Proposal Open Date:	West-wide closes Nov. 17 th Tribal closes Dec. 15 th	Various dates depending on amount requested, see grants.gov	Annual request for information, however technical assistance and site visit is first step in application	Open until October 31, 2023 Available annually thru October 2026
Eligible Applicants:	States apply via Western LSR (forestrygrants.org) & Tribal governments apply via GRANTS.GOV Search for USDA-FS-2024-LSR-NATIONAL-TRIBAL	State, local, tribal governments, educational institutions, non-profit entities, and for-profit entities GRANTS.GOV Search for USDA-FS-2023-IRA-FLS-01	State and tribal governments with existing tree nurseries	Non-profits; local, state, and tribal governments; businesses, companies, corporations (for profit); institutions of higher education; and special purpose districts (public utility districts, fire districts, conservation districts, school districts, and ports.) https://www.fs.usda.gov/managing-land/fire/grants
Individual Award Ceiling:	\$50,000-300,000 annually	Track A: \$2-\$25 million Track B: \$2 million Track C: subaward program for \$5-\$50 million	TBD for FY '24	<ul style="list-style-type: none"> Up to \$250k for CWPP plan production/revision Up to \$10M for implementation projects

*BIL=Bipartisan Infrastructure Law *IRA=Inflation Reduction Act

Additional State, Private and Tribal Forestry programs that provide financial and technical assistance:

- **Urban and Community Forestry** program provides grants and new funding opportunities through BIL/IRA focused on Justice40 were recently announced:
<https://www.fs.usda.gov/managing-land/urban-forests/ucf>
 - **Contact** Jacob Biar, Asst Urban and Community Forestry Prog. Mgr. (208) 449-8778 jacob.biar@usda.gov or find a contact at: <https://www.fs.usda.gov/about-agency/contact-us/urban-and-community-forestry>
- **Forest Health Protection** program can support Tribal forestry through technical information, emergency pest suppression funding, and special project funding:
 - Special Project Grant Programs related to Forest Health: <https://www.fs.usda.gov/foresthealth/working-with-us/index.shtml>
 - **Contact:** Your local FHP field office for further information: <https://www.fs.usda.gov/foresthealth/contact-us/regional-contacts.shtml>