

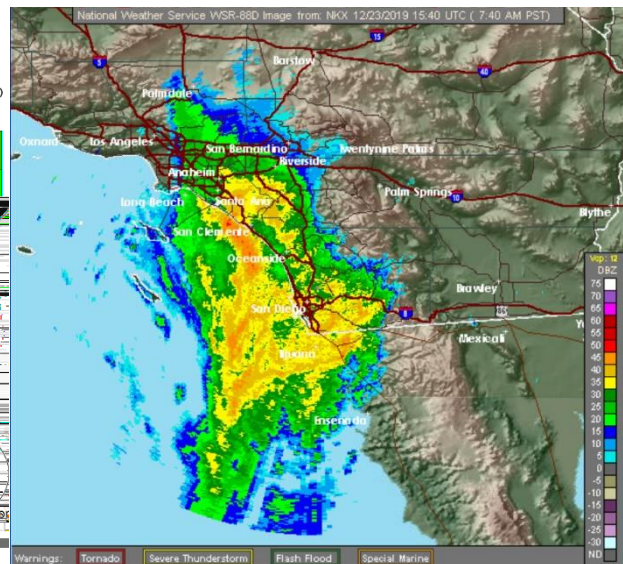
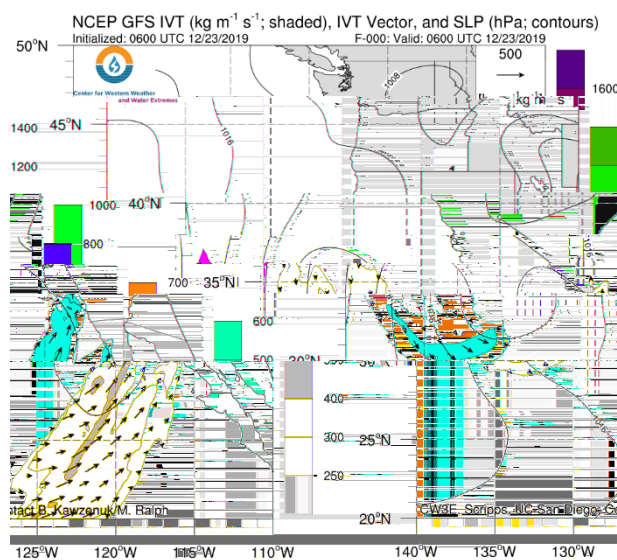
## Latest Update on Heavy Rainfall Event in Southern California

Updated: 23 December 2019

A brief look into the heavy rainfall event currently impacting portions of Southern California.

### Forecast Highlights:

- A narrow corridor of moist air and enhanced moisture transport associated with a closed low off the California coast will continue to bring moderate-to-heavy rainfall to Southern California today
- As of early Monday morning, an estimated 1–2.5 inches of precipitation have already been observed in portions of Santa Barbara, Ventura, and Los Angeles Counties
- About 0.5–1.5 inches of additional rainfall are expected today and tonight, with locally higher amounts possible in Orange County, the eastern Transverse Ranges, and the Peninsular Ranges
- Additional snowfall accumulations of 6–12”+ are expected in the highest elevations of the Transverse Ranges
- NOAA/NWS Weather Prediction Center (WPC) has issued an Excessive Rainfall Outlook for portions of Southern California, including Los Angeles, the Inland Empire, Orange County, and San Diego
- At 7:40 AM PST, NWS San Diego radar indicated a band of intense rainfall (reflectivity > 40 dBZ) moving northward into Orange County



### Additional Considerations:

- Visit <https://cwrfc.noaa.gov/> for specific river and stream forecasts and <https://www.weather.gov/> for point specific watches, warnings, and forecasts.

In-depth AR forecasts products can be found here:

<http://cw3e.ucsd.edu/iwv-and-ivt-forecasts/>

Update provided by C. Castellano

[cjcastellano@ucsd.edu](mailto:cjcastellano@ucsd.edu)

Stay tuned to the CW3E webpage for a full AR Update