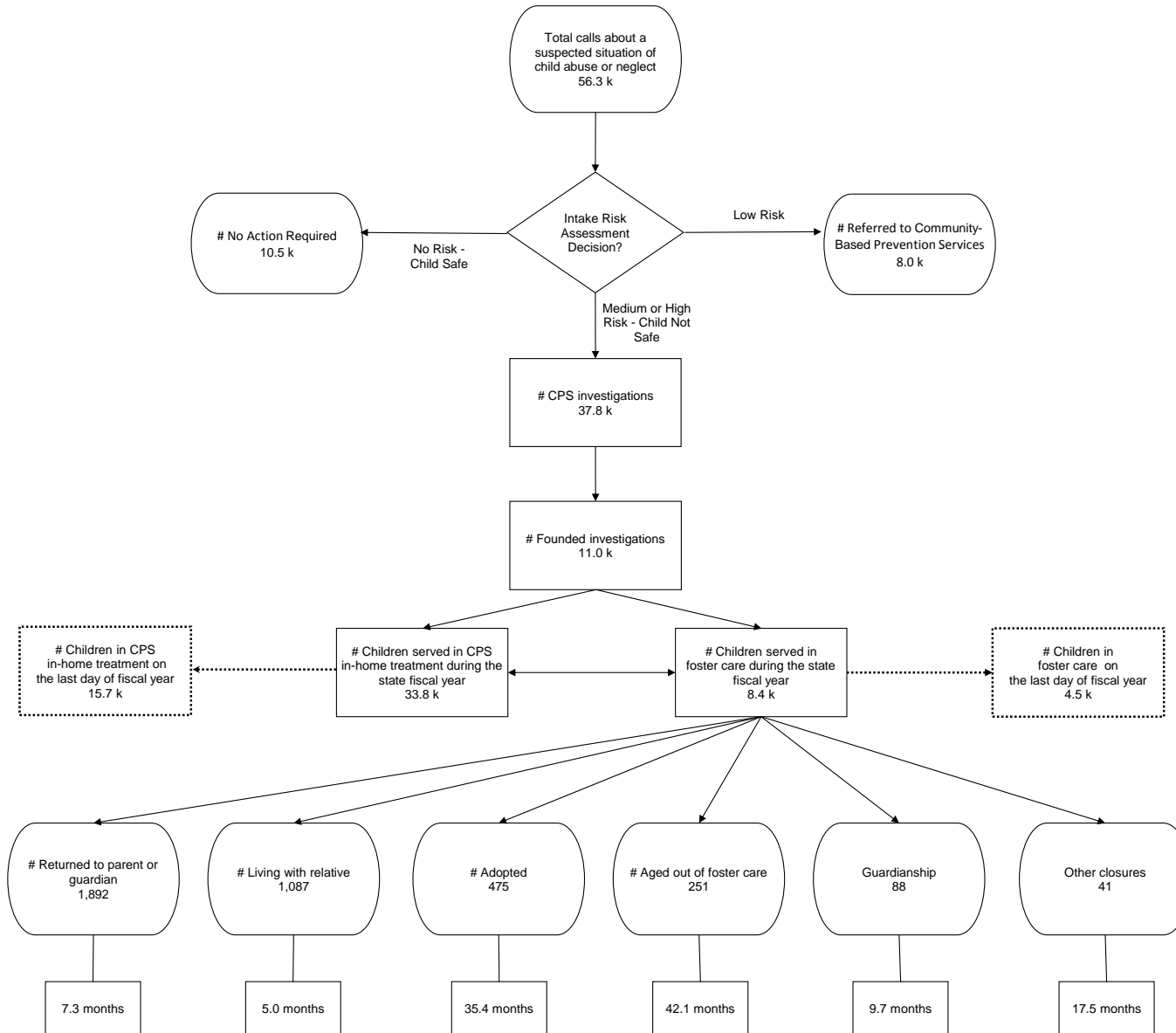


South Carolina Department of Social Services
Child Welfare Services in State Fiscal Year 2017 - 2018

Source: CAPSS / Accountability, Data, and Research effective August 1, 2018



Other Closures Include	
8	Court Terminated (Runaway)
9	Deceased
6	Maternity Placement No Longer Needed/Desired
18	SC Transfer to Other Authority
41	STATE TOTAL