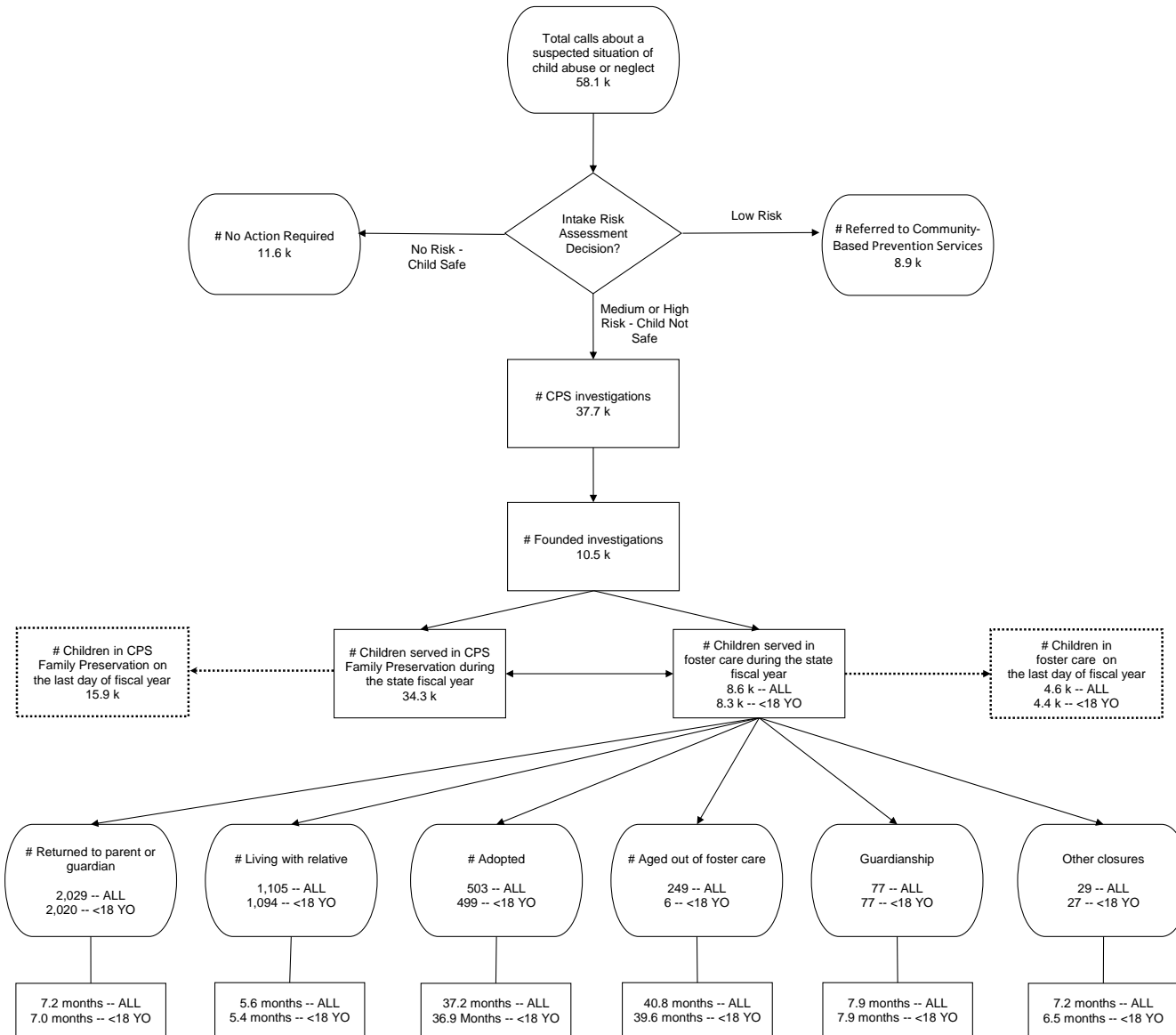


Child Welfare Services in State Fiscal Year 2018 - 2019

Source: CAPSS / Accountability, Data, and Research effective August 1, 2019



ALL	<18 YO	Other Closures
3	2	Court Terminated (Runaway)
5	5	Deceased
2	2	Maternity Placement No Longer Needed/Desired
19	18	SC Transfer to Other Authority
29	27	STATE TOTAL