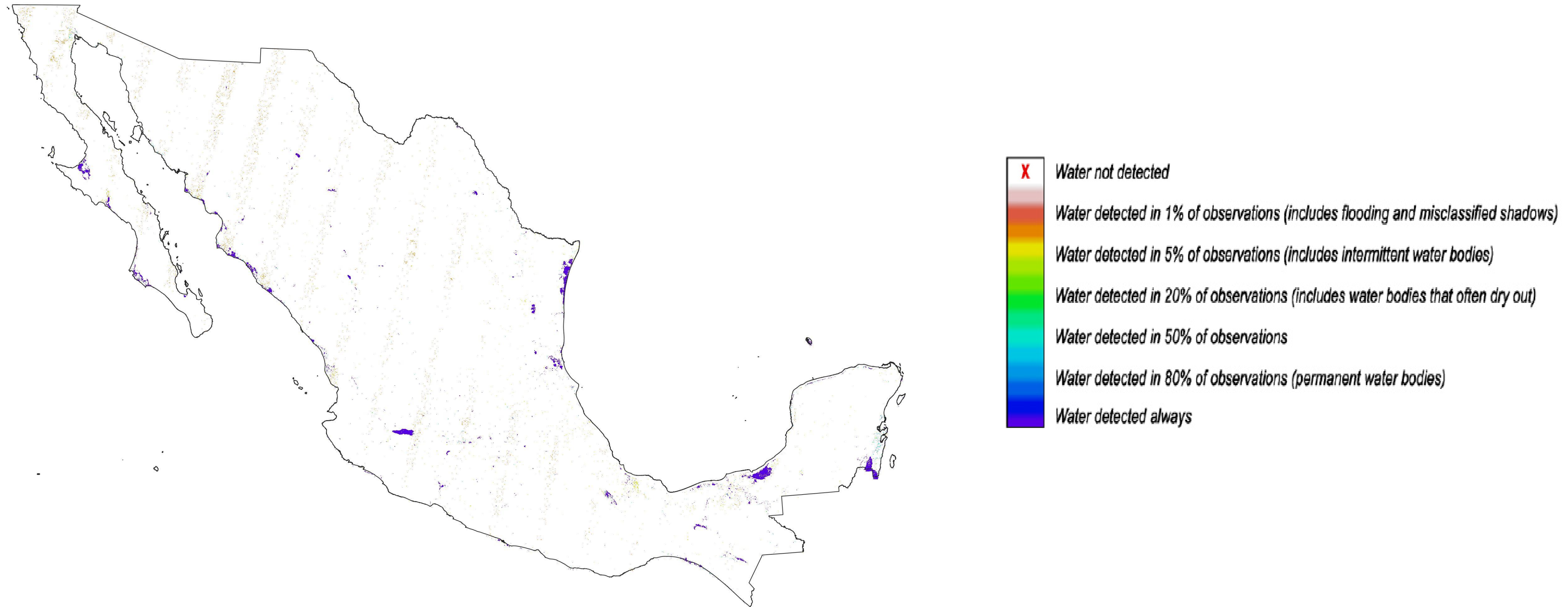




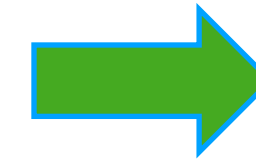
WOfS

Water Observations from Space

WOfS (Water Observation from Space) displays historical surface water derived from satellite imagery (Landsat-7 and Landsat-8) in a specific space and time extents with an algorithm executed in the Open Data Cube. WOfS aims to allow a better understanding of where water is usually present; where it is seldom observed; and where inundation of the surface has been occasionally observed by satellite and their temporal dynamics.

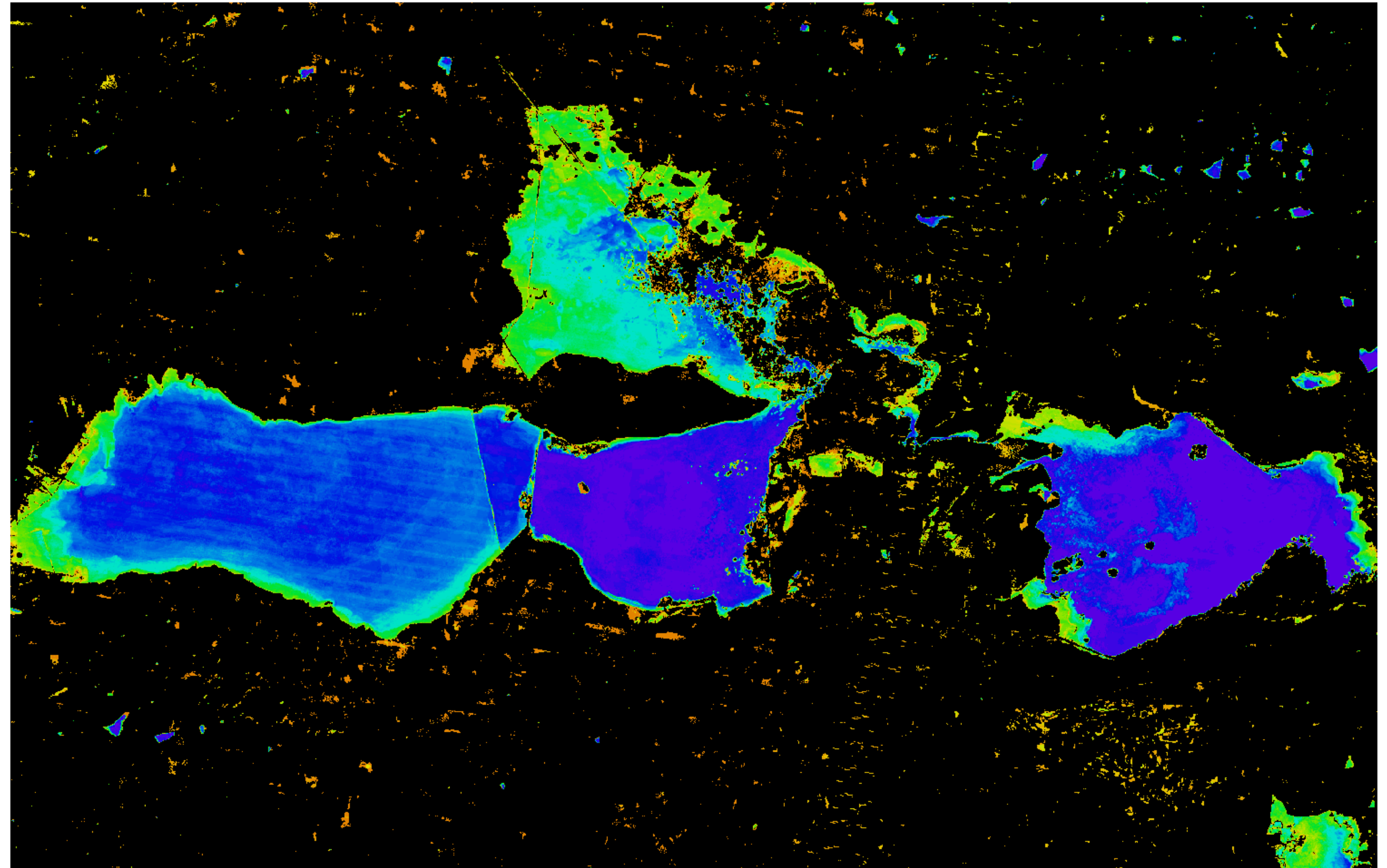
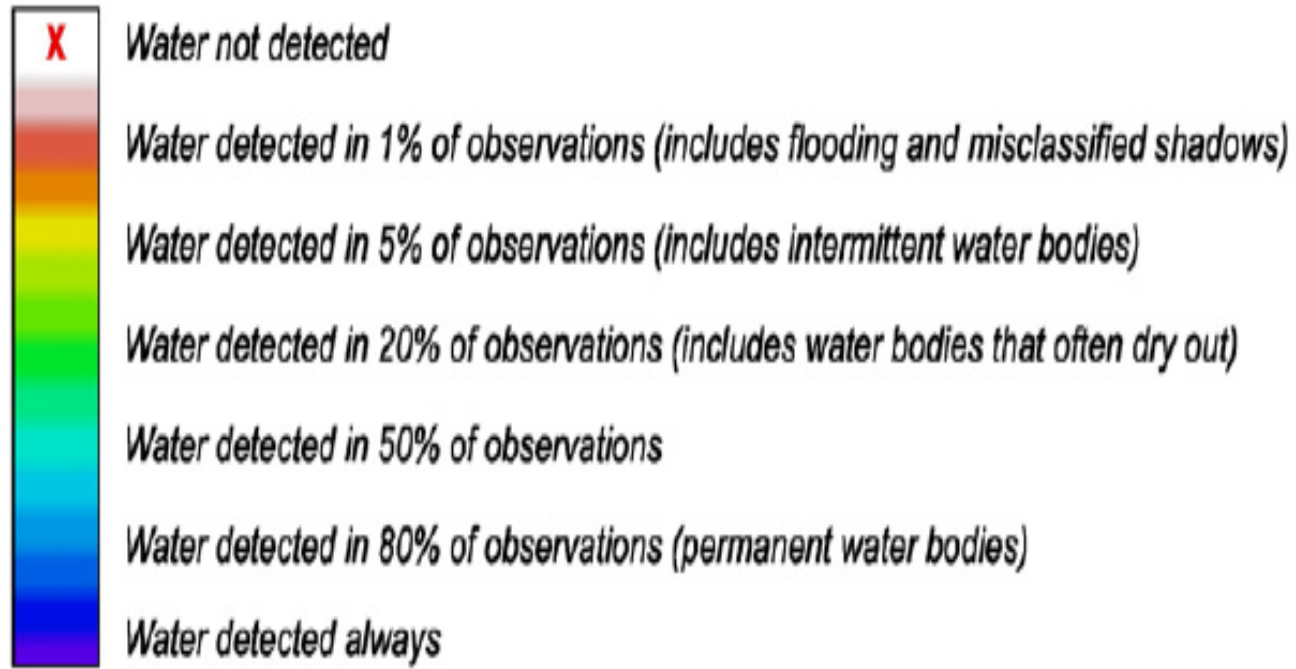


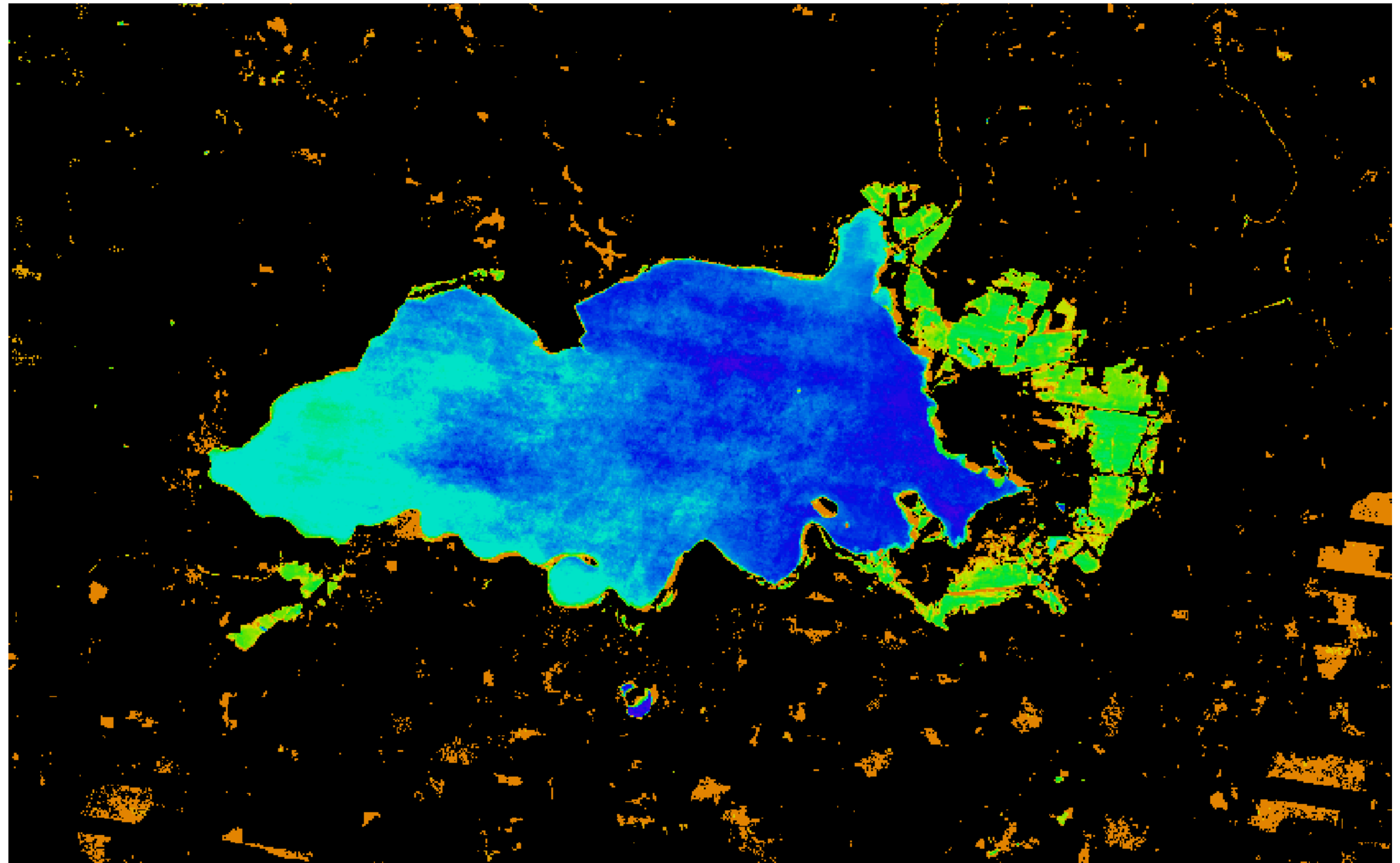
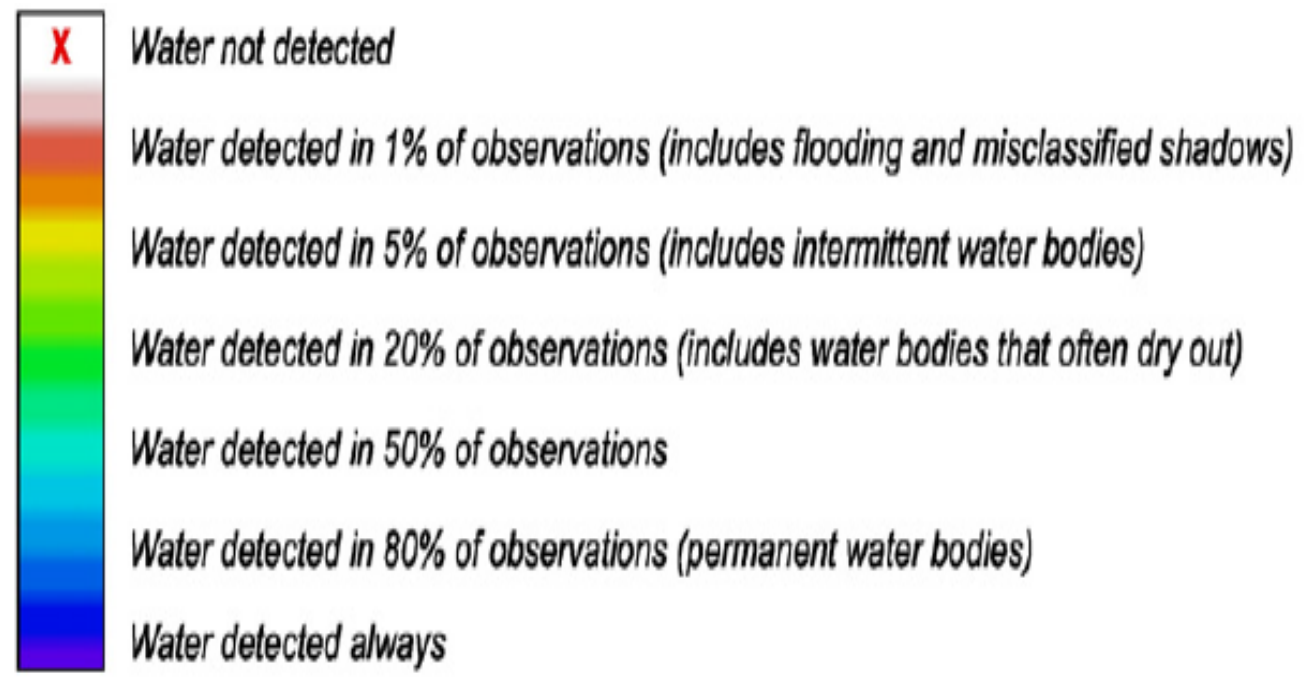
| WOfS BANDS | |
|------------|-------|
| BAND 1 | WOfS |
| BAND 2 | WET |
| BAND 3 | TOTAL |

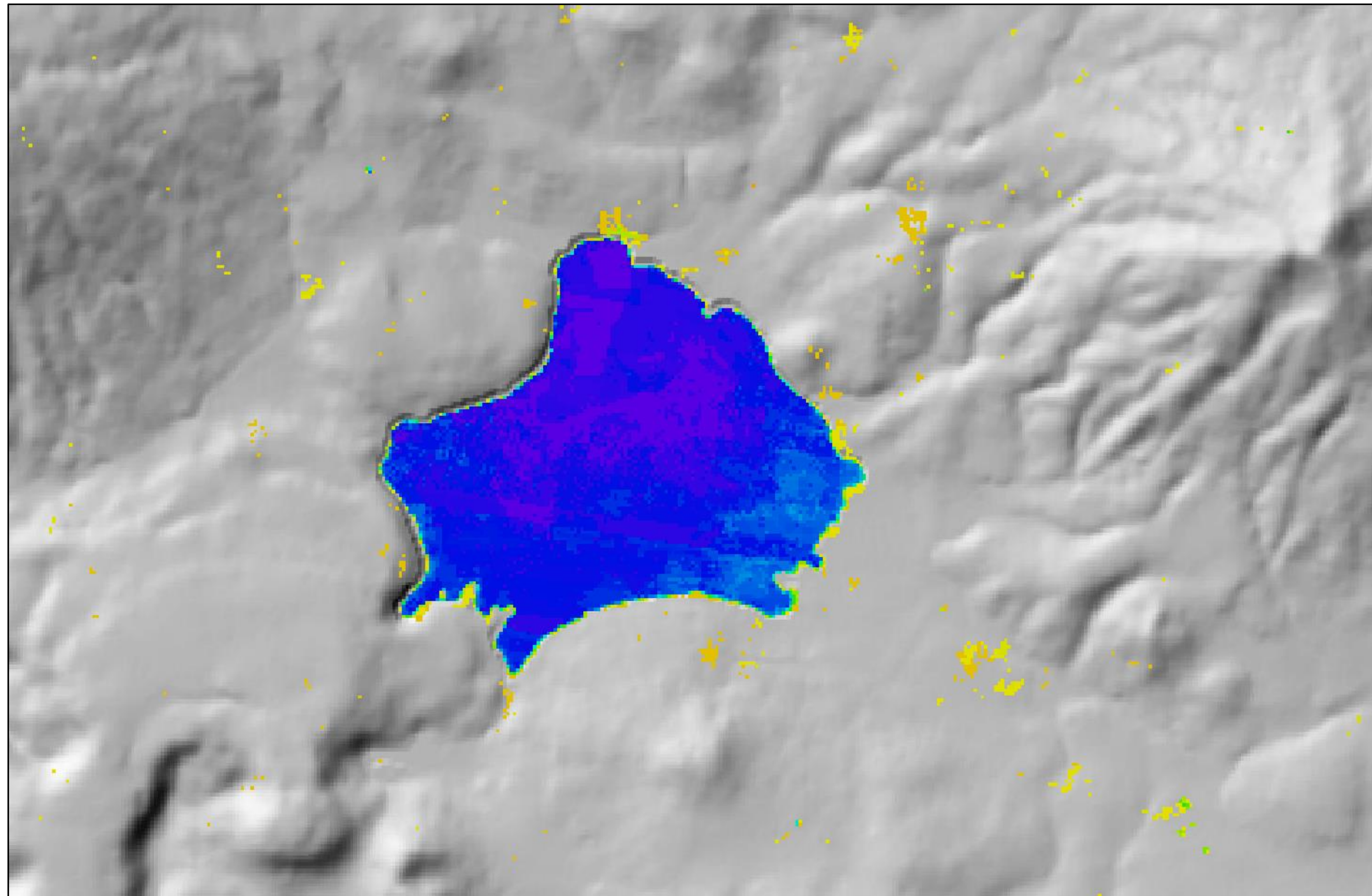
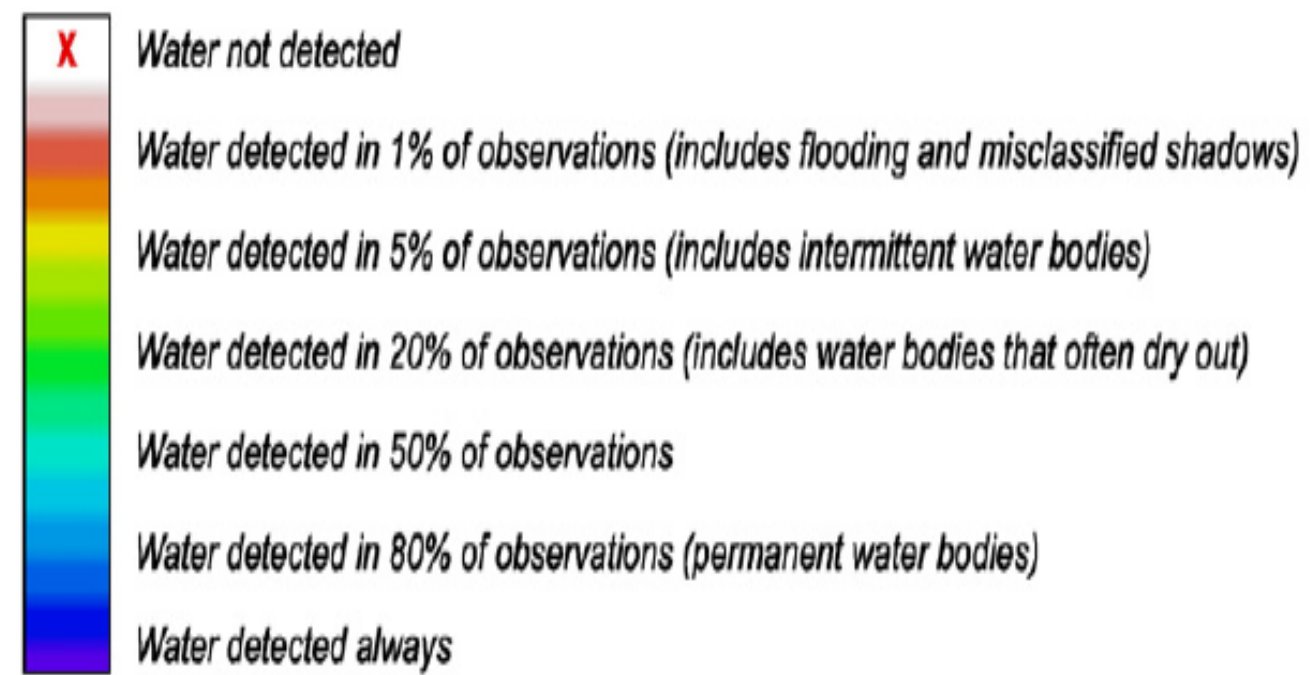


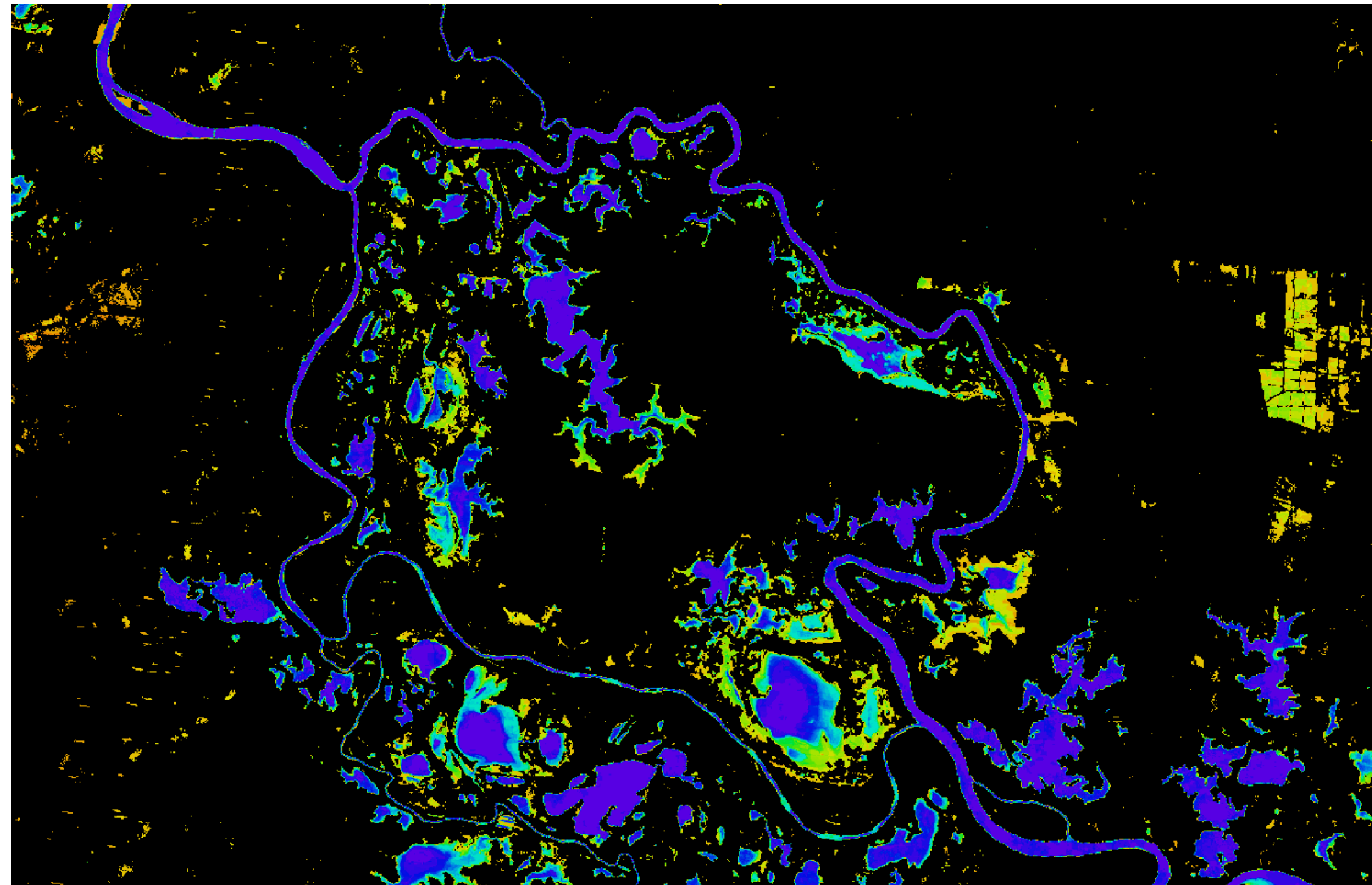
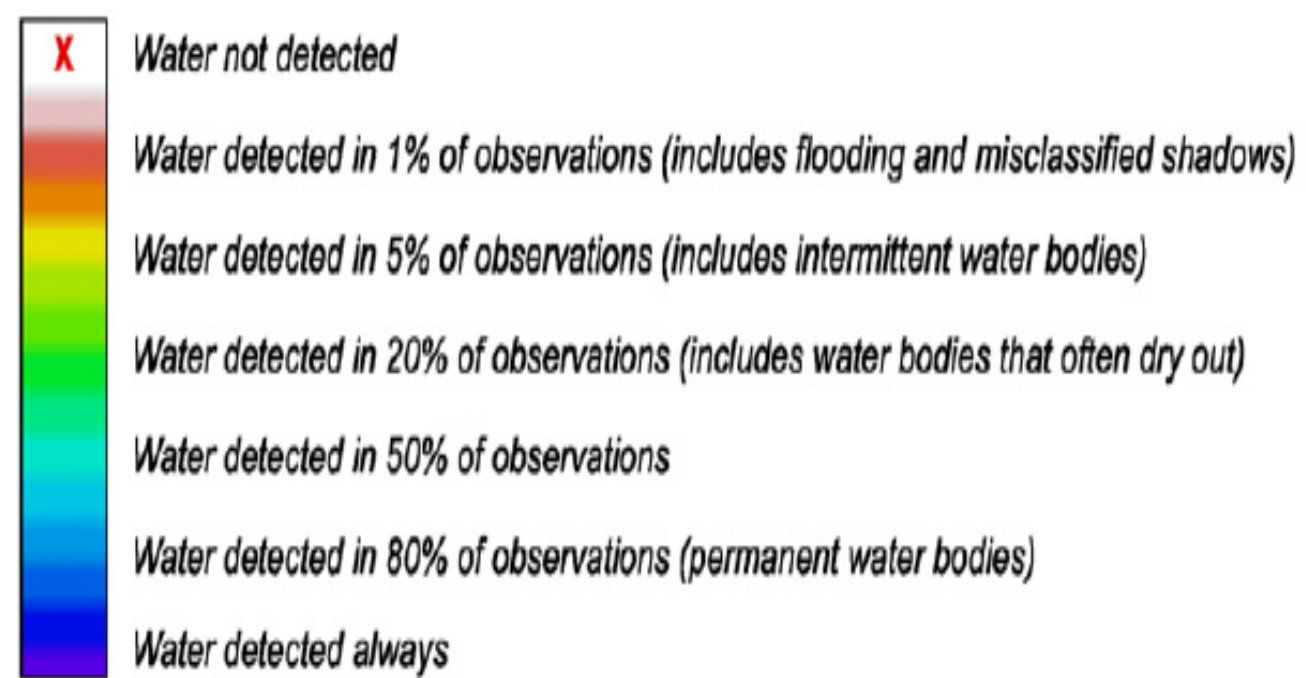
| Objeto espacial | Valor |
|-------------------|-------------------|
| 0 | wofs_2015_CHAPALA |
| wofs_2015_CHAPALA | |
| Banda 1 | 100 |
| Banda 2 | 24 |
| Banda 3 | 24 |
| (Derivado) | |

$$WOfS = \left(\frac{WET}{TOTAL} \right) * 100$$









SDG 6.6.1

Spatial extent of water-related ecosystems and inland open waters

Percentage Change in Spatial Extent = $[(\beta - \gamma) / \beta] * 100$

Where β = the average national spatial extent baseline (National Dataset of water bodies)

Where γ = the average national spatial extent of any other 5 year period (WOfS 2015 National Coverage)



Source: WOfS 2015 National Coverage - Data Cube

Area: 44 492.4126 Km²

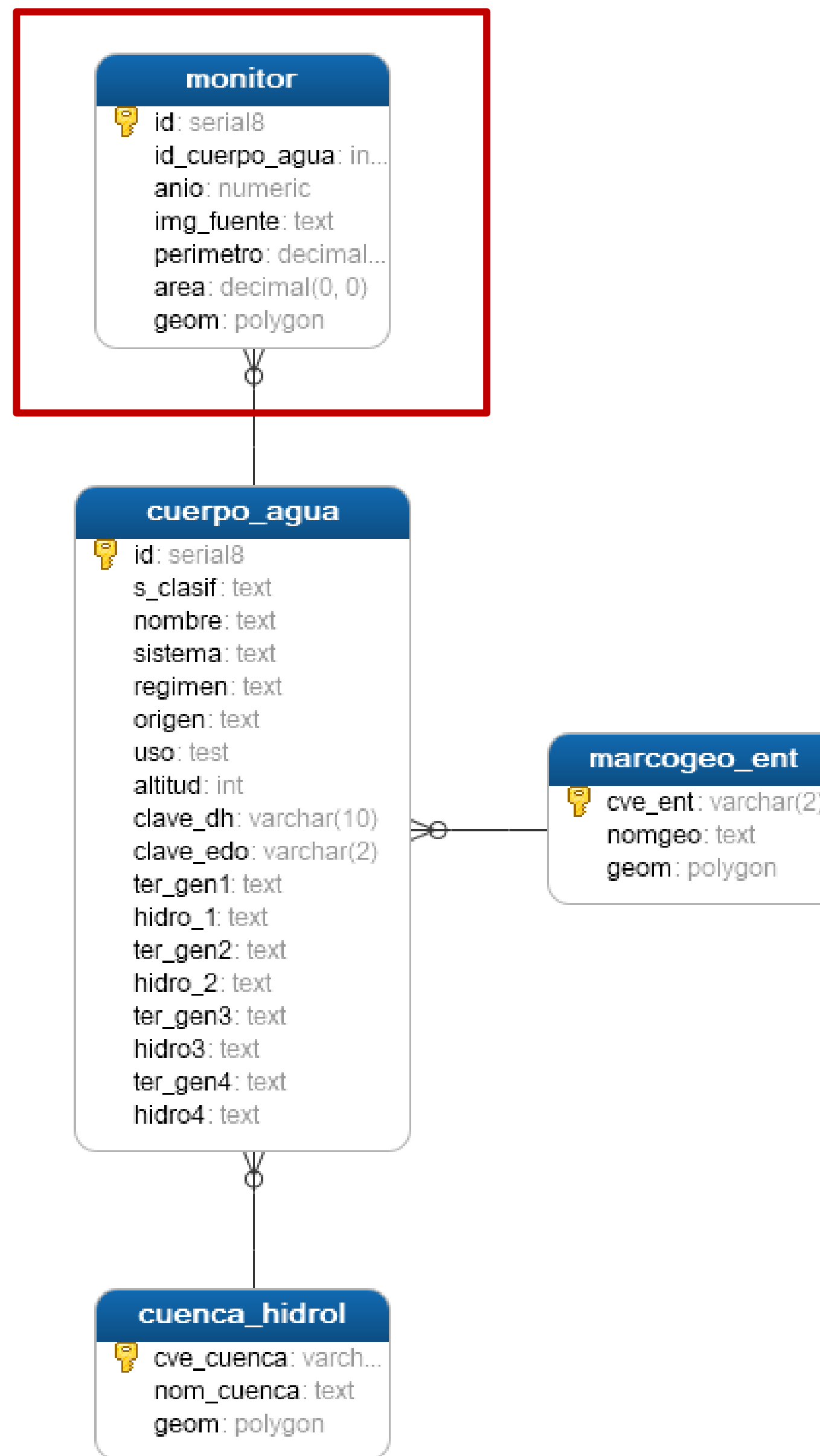


Source: Water Bodies National Dataset scale 1: 50 000 - 2010

Area: 47 622.9 Km²

https://www.unwater.org/app/uploads/2018/05/Step-by-step-methodology-6-6-1_Revision-2018-03-02_Final.pdf





Conociendo México

juan.camacho@inegi.org.mx

hugo.miranda@inegi.org.mx



INEGI Informa