

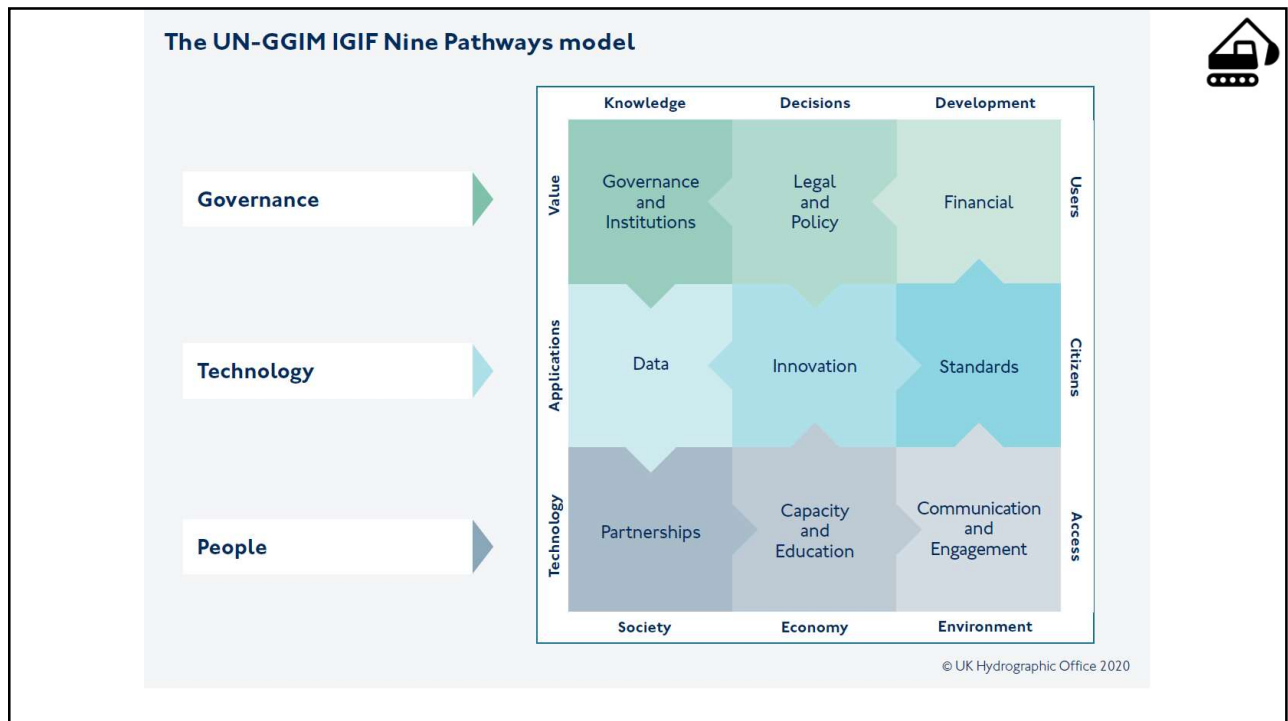


IGIF Implementation UK

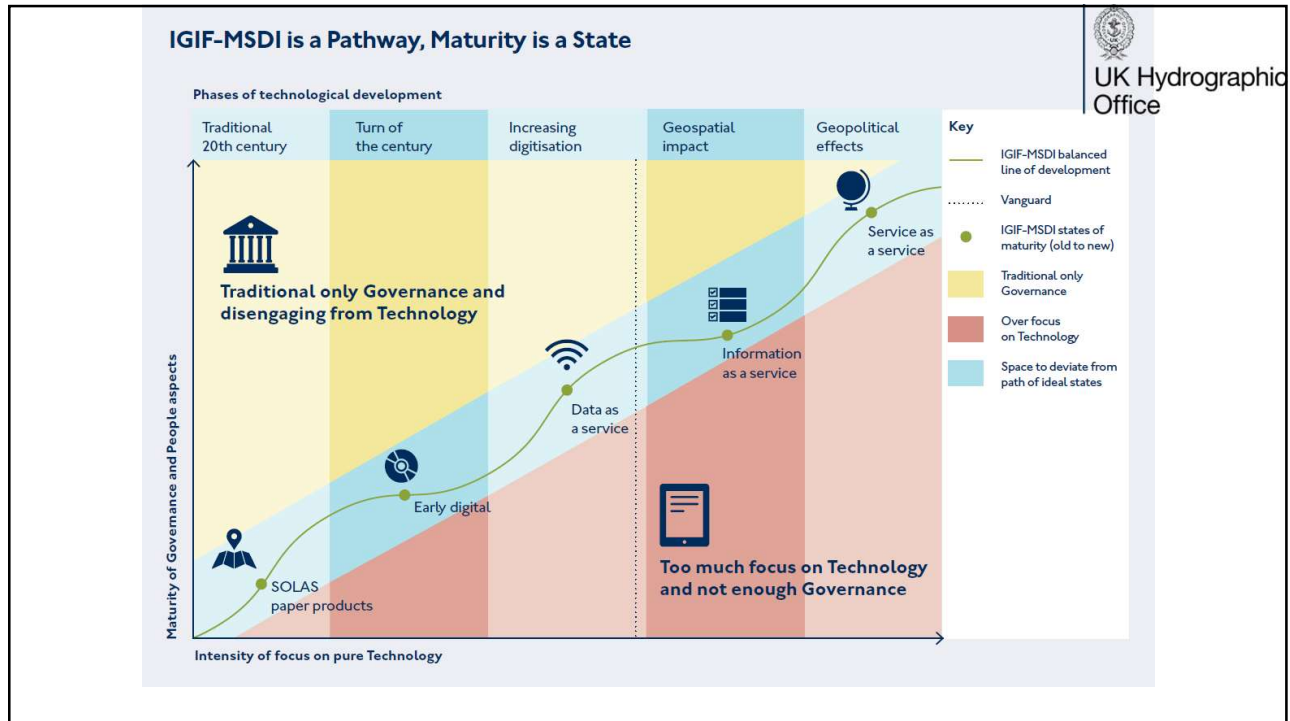
James Carey  
Mphil FIMarEST CMARTech

Deputy CDO  
UK Hydrographic  
Office

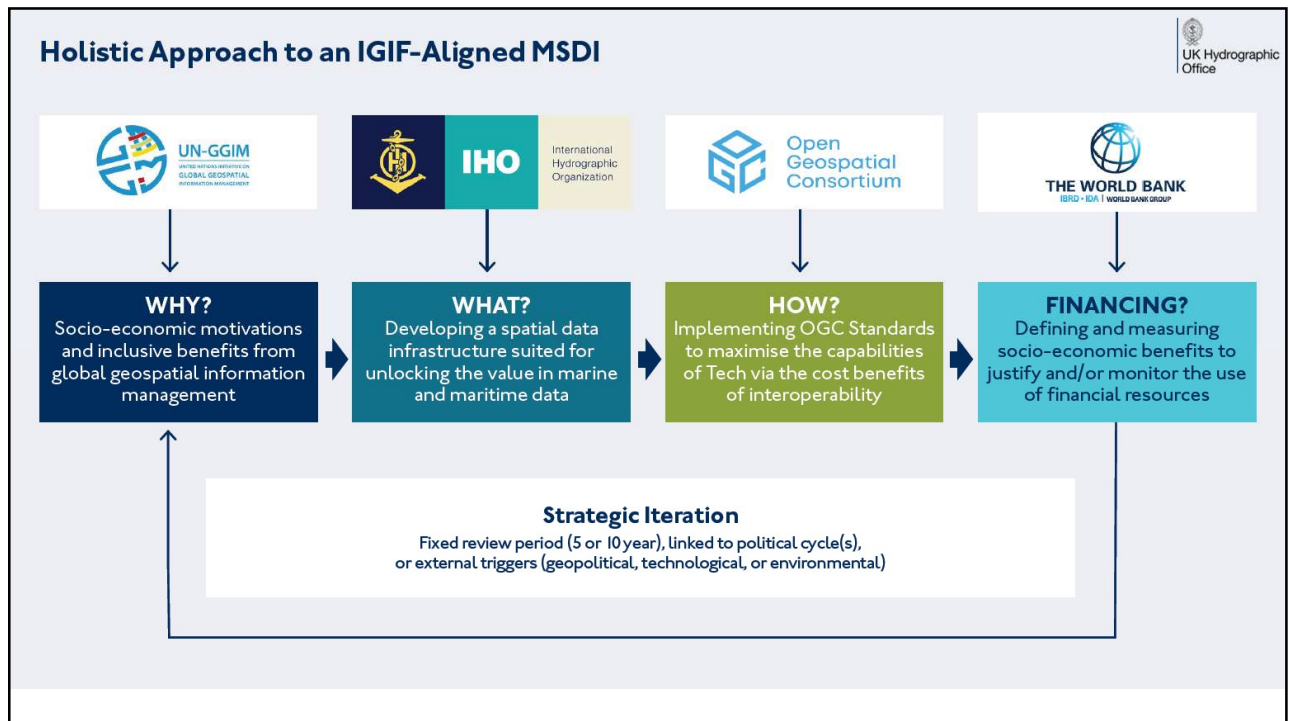
1



2



3



4

### Lead Authorship, Contributors, Reviewers, and Facilitators



**Dr Gerald J Wong**  
Co-Chair of OGC Marine  
DWG & OGC Planning  
Committee Delegate  
United Kingdom  
Hydrographic Office



**Kathrine Kelm**  
Senior Land  
Administration Specialist  
The World Bank Group



**Jens Peter Hartmann**  
Chair of IHO MSDI WG  
Danish Geodata Agency,  
Kingdom of Denmark



**John Nyberg**  
Co-Chair of UN WG-MGI  
National Oceanic and  
Atmospheric  
Administration, United  
States of America



**Pearlyn Pang**  
Co-Chair of UN WG-MGI  
Vice-Chair of IHO MSDI WG  
Maritime and Port  
Authority, Republic of  
Singapore



**Chee Hai Teo**  
UN-GGIM Secretariat,  
Department of Economic  
and Social Affairs  
United Nations



**Gregory Scott**  
UN-GGIM Secretariat,  
Department of Economic  
and Social Affairs  
United Nations



**Trevor Taylor**  
Senior Director, Member  
Success & Development  
Open Geospatial  
Consortium



**Leonel Manteigas**  
Assistant Director,  
Coordination & Capacity

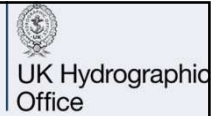


**Andrew Coote**  
Principal NSDI  
Consultant



Special thanks for Side Event support and/or endorsement:  
IHO SecGen Mathias Jonas  
OGC CEO Nadine Alameh  
ISO/TC-211 Chair Peter Parslow

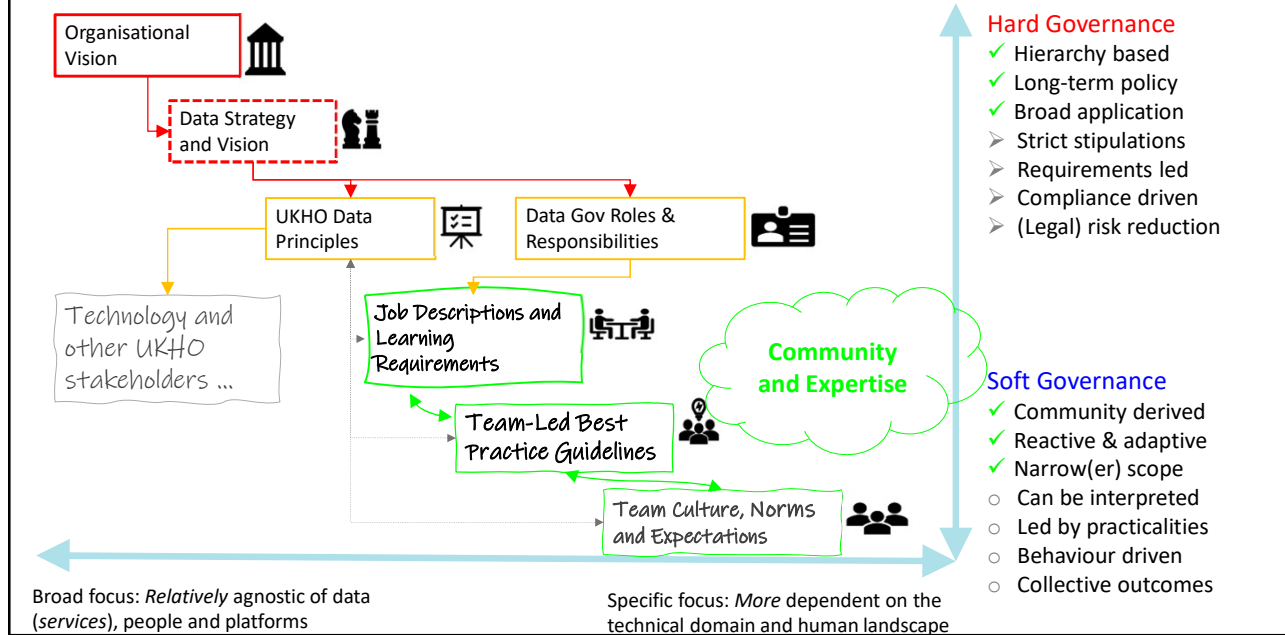
### IGIF-MSDI Maturity Assessment



— Baseline + ΔT  
— Initial Baseline



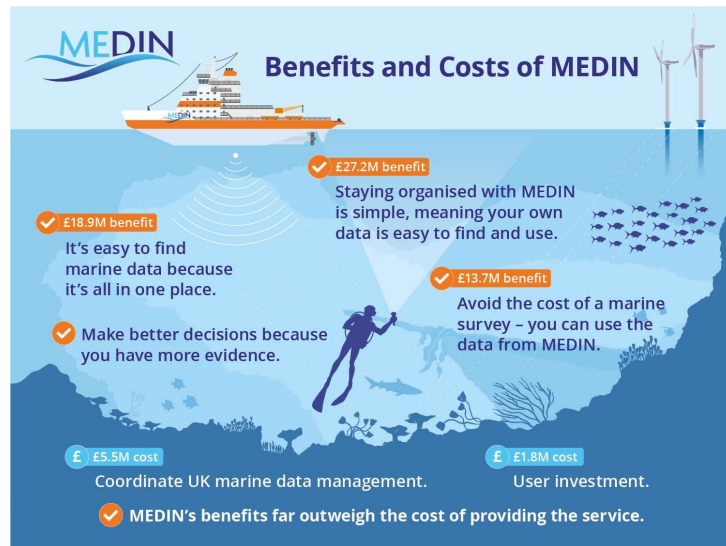
# Governance and Insitutions



7

# Finance

- How to define the value of geospatial data operations more widely in the UK?
- How to define business cases for data projects and overheads within the UKHO



8

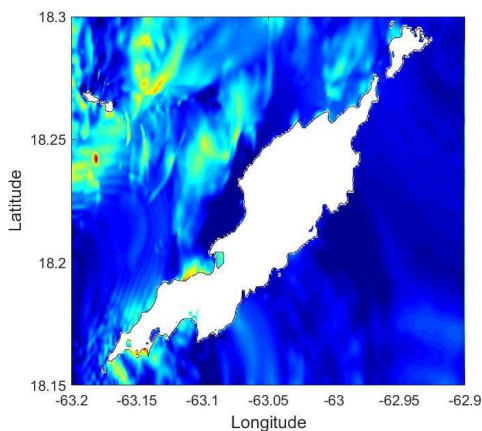


## Policy and Legislation

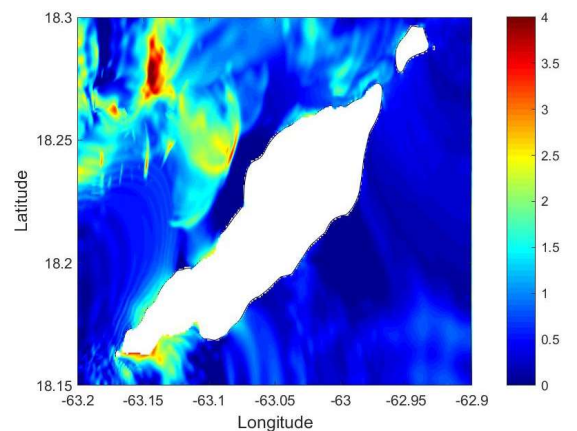


9

## Data: (Quality)



**Figure 5-13: Simulated Run-up heights along Anguilla coast (source LA2 with 10m bathymetry)**



**Figure 5-15: Simulated Run-up heights along Anguilla coast (source LA2 with GEBCO bathymetry)**

10

# Innovation

A varied set of competencies including core skills, machine learning and MLOps, big data processing and geospatial data

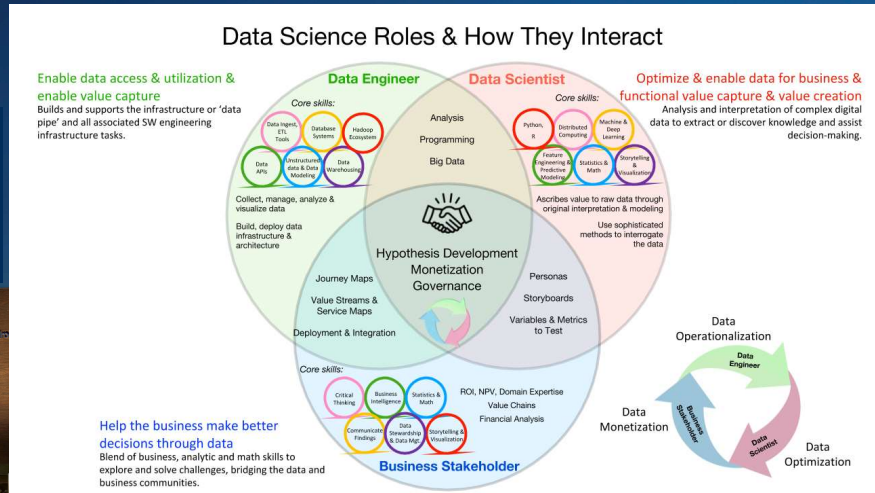
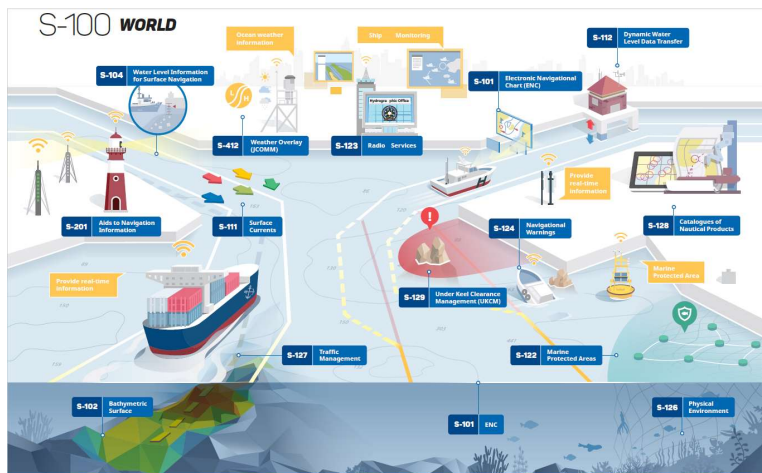


Image from *A Winning Game Plan For Building Your Data Science Team - KDouglass*

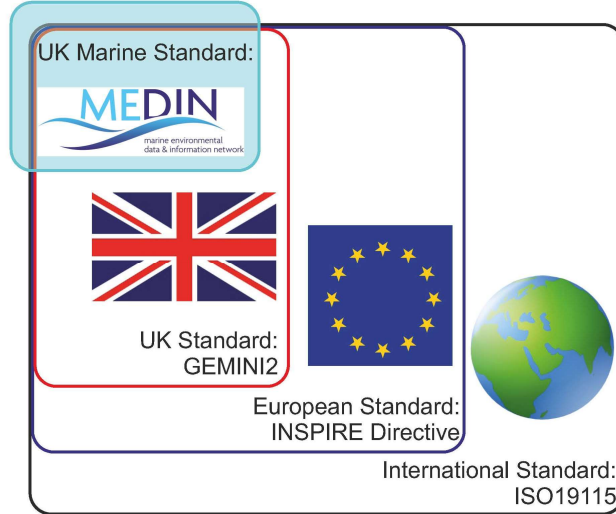
11

# S1xx A Data Demanding Standard



12

# Marine Metadata Standard



13



14

# Training and Capacity Building

Internal MSDI briefings and awareness building

IHO MSDI Awareness Capacity Building Course

A 7 hr course held over two days - extremely well received and attended.

We had over 60 delegates from 16 nations as diverse as the more mature offices such as Indonesia, to fledging maritime outfits from Somalia and Yemen.

15

# Communication and Engagement

A lot to do within the UKHO!



16



## Use Case: Marine Data Interoperability in the Caribbean



Open Geospatial Consortium



**CARIGEO**  
Caribbean Geospatial Development Initiative  
GEO-EMPOWERING THE CARIBBEAN

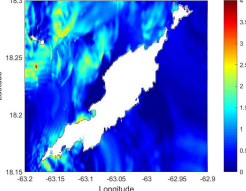


DIGITAL TWINS OF THE OCEAN





MACHC / CHMAC



Latitude: 18.15 to 18.3  
Longitude: -83.2 to -82.9

17

## Enabling Pace and Scale

Data Supply	Ingest and Storage	Master Data Management	Automation	Provision
Quality and Assurance Standards Agreements MSDI/QFAIR	Seamless and Easy Machine Readable Prepopulated and Standardised Metadata Storage and Platform Catalogue	Benchmark Dataset Data Migration Data Improvement	Extreme Automation Product Specifications Validation	ADDs MDP Standards APIs

18

