

Computer menu



Brings up documentation (currently OLD documentation)



Brings up configuration file



Brings up cpd client – Blue Screen

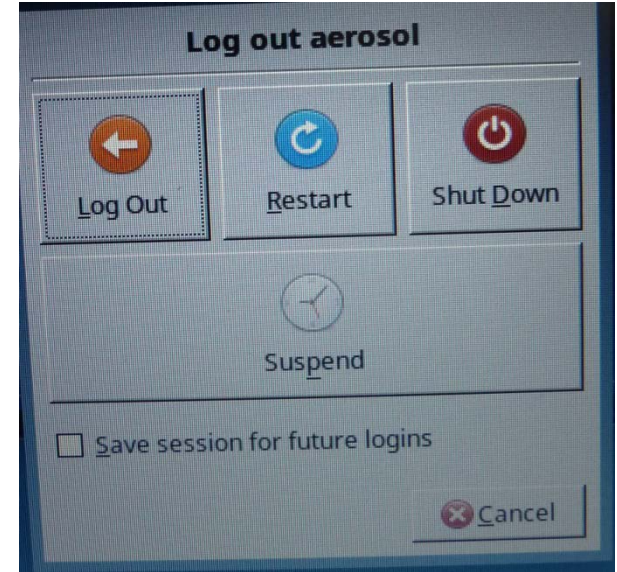


Brings up cpx3 – data plots

Shutting down/Rebooting the computer

There is no longer a desktop icon to shutdown/restart the computer. Rather you need to use the computer menu.

(1) Open the 'computer menu' using the tiny icon in the upper left corner of the desktop (see previous page). That will bring up this window.



(3) Clicking on the power button will bring up this window. Choose 'Restart' if you want to restart the computer. Choose 'Shut Down' to shut down the computer.

(2) Click on the power button in the lower left.



Restarting CPD

(1) Open main menu in cpd client and select 'system status'

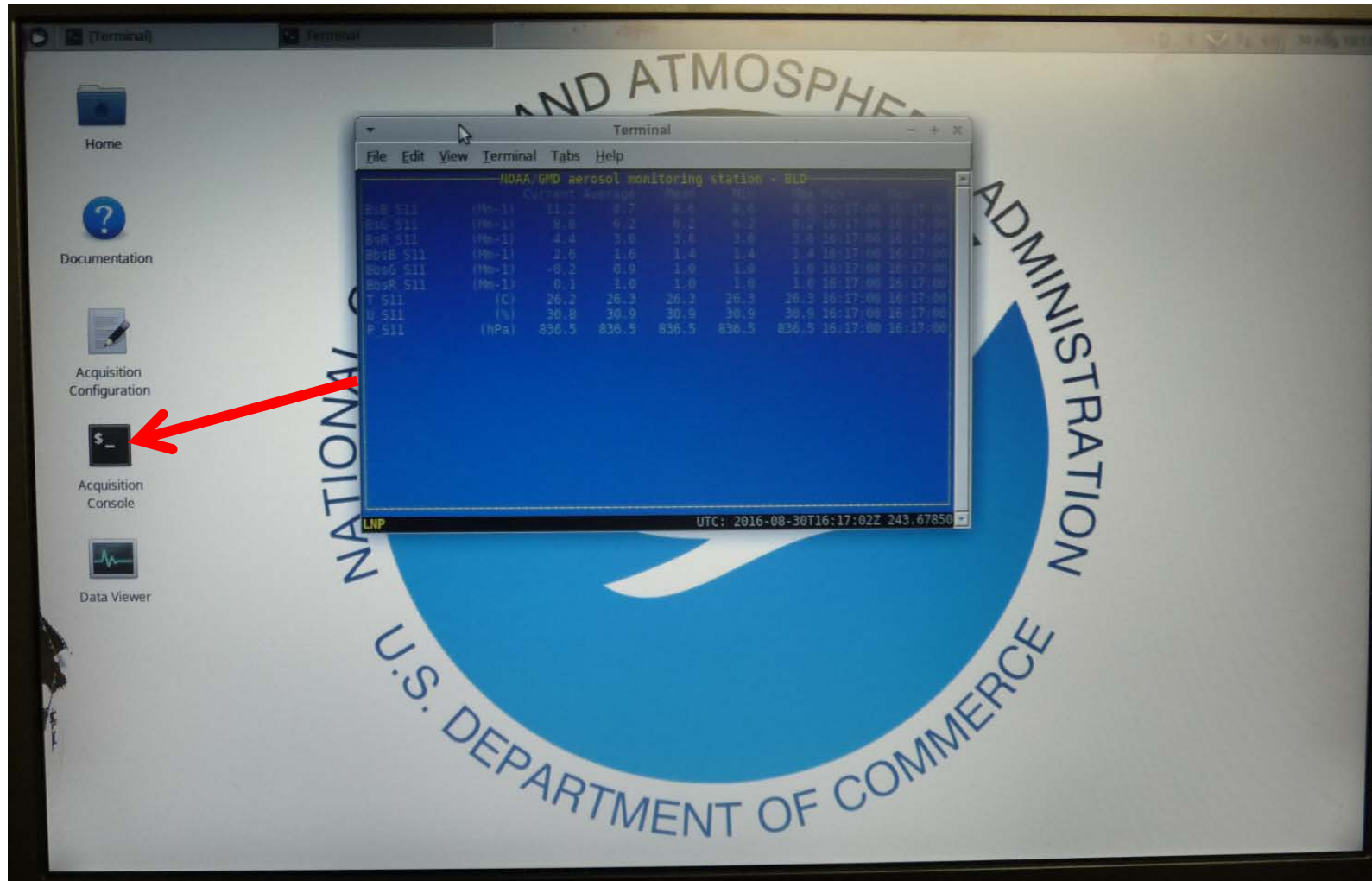


There is no longer a desktop icon to restart CPD. Rather you need to use the menu options in cpd client.

(2) In system status window, select 'RESTART ACQUISITION SYSTEM'



This will bring up a window with the options 'RESTART SYSTEM' or 'ABORT'. Choose 'RESTART SYSTEM'







There is no longer a send data icon on the cpd3 desktop. You can manually run "da.transfer.upload" in a terminal for a similar effect and it will give some feedback about the actual transfer status.

The data files that have been created but not yet transferred are in:
/var/lib/cpd3/send.

The data files that have completed sending are in:
/var/lib/cpd3/sent .