

HOW DOES THE WWC SUMMARIZE EVIDENCE IN TOPIC AREAS?

The What Works Clearinghouse (WWC) reviews and summarizes research within timely and relevant **topic areas**, which are broad areas of educational focus, such as literacy or STEM.



Topic areas focus the reviews on the effectiveness of interventions for certain students or on specific outcomes that best reflect student learning.



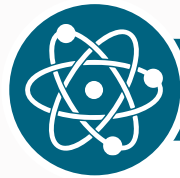
Topic areas make it easy to find information on the WWC website using the [Find What Works](#) resource or to locate [intervention reports](#) by topic.

What are the WWC topic areas in early education to high school?



Literacy

Increasing the reading and writing skills of beginning readers and adolescents



STEM

Improving student outcomes in science and mathematics



Educator Excellence and School Leadership

Providing effective training and support for teachers and school leaders



English Learners

Improving the English-language literacy and academic achievement of English learners



Early Childhood

Supporting the growth and development of young children



Supportive Learning Environments

Improving schools' climate and learning environment to help all students succeed



School Choice

Providing families more options in education to fit their needs



Dropout Prevention

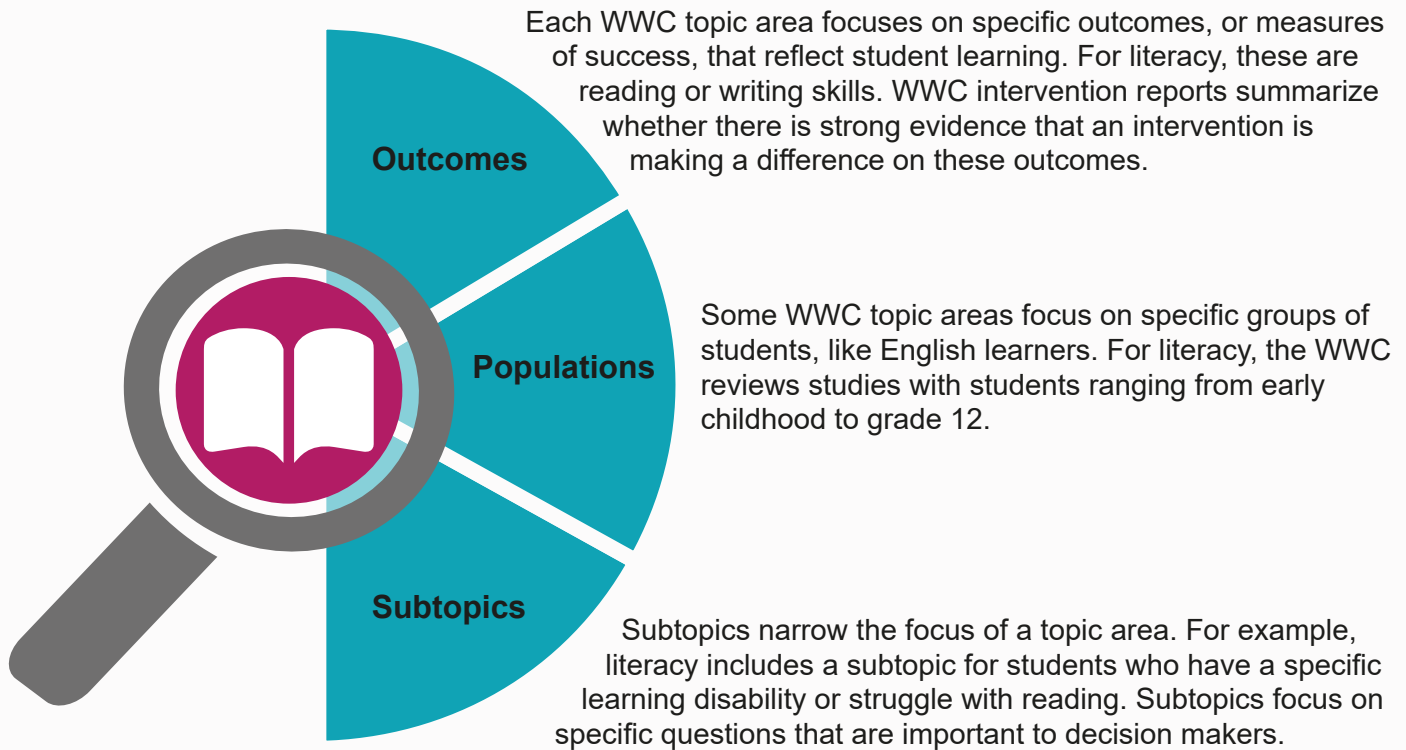
Helping students to complete high school



Supporting Children with Developmental Disabilities

Improving outcomes for children with autism spectrum disorder or intellectual disabilities

What's inside a WWC topic area?



How does the WWC summarize evidence within topic areas?

