



\$20^{The}mil

NSF EPSCoR infrastructure award allowed KY researchers to competitively win an additional

+

\$20mil

in follow-on.

872

J O B S

for scientific researchers were supported during the 2014-2019 award.

43

N E W

PATENTS

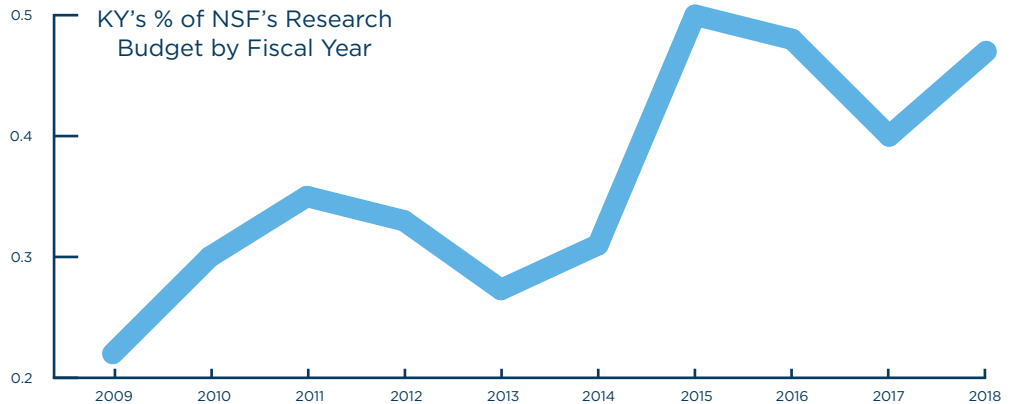
(12 licensed) were added to the IP pipeline by the NSF EPSCoR researchers supported on the 2014-2019 award.

288
PUBLICATIONS

177
GRADUATING UNDERGRADS

58
GRADUATE STUDENTS

EPSCoR WORKS FOR KY



NSF's research funding awarded to Kentucky has **DOUBLED** in the last ten years.

STATEWIDE IMPACT

The EPSCoR program awards are impacting academic research infrastructure across the entire state.

Award funding was given to UK, UofL, KSU, ECU, WKU, KCTCS (Big Sandy & BTC), Murray St., Morehead, and NKU. Other funding provided for student internships at KY S&T companies & other outreach & education programs.



18 Research Active **FACULTY HIRES**

UofL (5), UK (4), WKU (3), Murray St. (3), ECU (1), Morehead (1), Centre (1)

17 **SMALL BUSINESSES SUPPORTED**



\$20mil

NSF AWARD

+

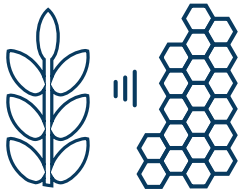
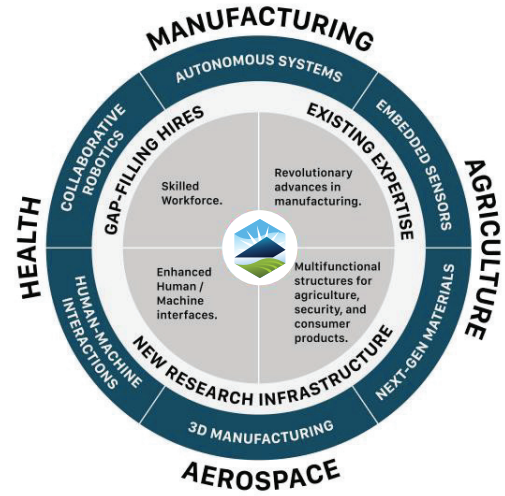
\$4mil

ST. & UNIV. MATCH

\$24mil

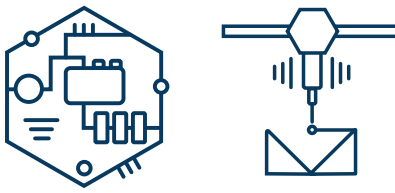
ADVANCED MANUFACTURING IN KENTUCKY

Collaborative research funded through this \$24 million partnership will help bring economic, industrial, and commercial success to Kentucky, Appalachia, and the nation.



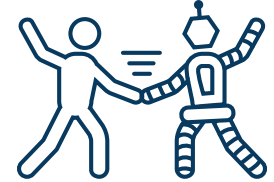
NEW MATERIALS

We'll use synthetic biology to produce new sustainable chemical building blocks with programmable lifetimes that are environmentally friendly.



DEVICE CONFIGURATION

We'll take these materials and develops them into electronically-enabled devices which can be 3D-printed and embedded into products like sensors, clothing, industrial machinery, medical devices or new inventions guided by the market.



HUMAN-MACHINE INTERACTION

We'll take the information from these building blocks these electronic devices and sensors and translate it through complex software into more digestible data. This helps humans work with robots and vice versa.

STATEWIDE COLLABORATION

Positive results in advanced manufacturing are only found through collaboration, leveraging research power from eight institutions across the state: UK, UofL, EKV, WKU, Morehead, Kentucky State, Transylvania, & Somerset Community College



8 NEW FACULTY HIRES

UK (4), UofL (2) EKV (1), Somerset Comm. College (1)

kynsfepscor.org