



Originally published: May 2017

Updated: September 2024

Washington State Occupational Health Indicators - Current Data (2010-present)

Data from the Safety & Health Assessment & Research for Prevention (SHARP) program at L&I.

(SHARP Surveillance Report #80-20-2023)

Occupational Health Indicators

There are over 3 million workers in Washington State. Every year tens of thousands are injured or made ill on the job. These work-related injuries and illnesses have high human and economic costs, but can be prevented. Tracking these injuries and illnesses is the first step to understanding whether prevention methods are succeeding or need to be improved.

Washington State researchers at the Department of Labor and Industries worked with the Council of State and Territorial Epidemiologists (CSTE) Occupational Health workgroup to develop a set of measures to track occupational injuries and illnesses. These measures are called 'occupational health indicators' (OHI) and are meant to provide an overview and general assessment of the occupational health status of Washington State.

CSTE publishes OHI data annually, but does not necessarily include the most up-to-date data. Generally, the OHI data on the CSTE website lag the publication year by 3 years (for example, OHI data for year 2014 are not published on the CSTE website until late 2017). In an effort to make WA State OHI data available in more "real-time", this report summarizes the data available from 2010 through the most currently available data. Because data sources differ in publication schedules, portions of the report may be blank where data are not yet available.

This document will be updated biannually, or as data becomes available. Revisions will be noted.

(P) denotes preliminary numbers.

(R) denotes a revision.

Newest data appears in **blue bold font**.

A dashed vertical line between years of data indicates a break in series, generally due to changes in coding systems.

"NA" indicates data not available.

"NR" indicates data not reportable due to small numbers.

For technical notes and details on data sources, case definitions and methods, see indicator report #80-14-2019 "Washington State Occupational Health Indicators: 2000-2014 Trends"

https://lni.wa.gov/safety-health/safety-research/files/2019/WA_OHI_Trends_2000to2014.pdf

For information about the development and selection of the Occupational Health Indicators, as well as the downloadable guide that contains the methodology, see the CSTE website <http://www.cste.org/group/OHIndicators>

Need more information?

Safety and Health Assessment and Research for Prevention (SHARP) Program

Washington State Department of Labor and Industries

PO Box 44330

Olympia, WA 98504-4330

1-888-66-SHARP

This report was supported in part by Cooperative Agreement U60 OH008487 from the National Institute for Occupational Safety and Health (NIOSH). The contents are solely the responsibility of the authors and do not necessarily represent the official views of NIOSH and the Center for Disease Control and Prevention.

	2010	2011	2012	2013	2014	2015	2016	2017	2018	2019	2020	2021	2022	
Number of employed persons age ≥ 16 years	3,180,000	3,127,000	3,184,000	3,221,000	3,269,000	3,354,000	3,449,000	3,551,000	3,613,000	3,779,000	3,595,000	3,693,000	3,828,000	
Employment Demographics														
P1. Percentage of civilian workforce unemployed	10.2	9.4	8.3	7.0	6.3	6.0	5.5	4.6	4.4	4.2	8.3	5.5	4.4	
P2. Percentage of civilian employment self-employed	7.6	7.1	7.6	6.5	6.1	6.1	6.0	7.1	6.0	6.3	7.0	6.5	6.5	
P3. Percentage of civilian employment in part-time jobs	23.0	22.4	21.8	20.0	20.1	19.8	19.3	19.7	17.9	17.1	17.2	17.9	17.2	
P4. Percentage of civilian employment by number of hours worked														
<40 hours	40.5	40.1	38.7	35.9	36	36.9	34.9	35.7	32.6	34.0	36.9	34.2	35.9	
40 hours	35.7	35.5	37.0	40.1	39.6	36.9	38.6	38.9	41.2	40.8	42.1	44.5	45.6	
41+ hours	23.8	24.4	24.3	24.0	24.4	26.2	26.4	25.4	26.2	25.3	20.9	21.2	22.2	
P5. Percentage of civilian employment by sex														
Males	52.4	52.6	53.3	53.5	53.3	53.8	52.8	54.0	54.7	53.8	53.5	53.3	54.2	
Females	47.6	47.4	46.7	46.5	46.7	46.2	47.2	46.0	45.3	46.3	46.5	46.7	45.8	
P6. Percentage of civilian employment by age group														
16 to 17	1.0	0.7	1.0	0.8	0.9	1.0	1.2	1.0	1.2	0.9	0.7	1.1	1.1	
18 to 64	95.2	94.9	94.2	94.6	94.1	93.6	93.7	93.0	94.0	93.7	93.4	93.3	93.1	
65+	3.8	4.5	4.8	4.6	5.1	5.4	5.1	6.0	4.8	5.4	5.9	5.6	5.8	
P7. Percentage of civilian employment by race														
White	84.6	84.5	81.7	82.2	81.8	81.0	80.7	80.5	79.4	78.9	79.1	79.1	78.1	
Black	2.6	2.7	3.3	3.0	3.3	3.8	4.1	4.0	3.8	3.7	4.1	4.9	4.6	
Other	12.8	12.8	15.0	14.8	14.9	15.2	15.3	15.5	16.7	17.4	16.9	16.0	17.4	
P8. Percentage of civilian employment by Hispanic Origin	8.3	7.9	9.0	9.7	10.8	12.4	12.1	13.2	13.3	13.5	13.3	14.5	13.9	
P9. Percentage of civilian employment by industry														
Post-2003 Industry Categories:														
Mining	0.1	<0.05	<0.05	0.1	0.1	0.3	0.2	0.2	0.3	0.2	0.2	0.2	0.2	
Construction	6.6	5.7	5.5	6.4	6.5	6.6	6.3	6.9	7.1	7.2	7.6	7.5	7.8	
Manufacturing - Durable goods	7.5	8.4	9.6	8.1	7.5	7.1	6.9	7.1	7.5	8.2	7.7	6.5	6.7	
Manufacturing - Non-durable goods	3.0	2.6	2.7	2.9	3.5	3.5	3.2	2.9	3.4	3.2	2.3	2.5	2.9	
Wholesale and Retail Trade	13.3	13.5	14.2	14.2	14.3	14.0	14.8	15.6	13.5	13.2	14.3	13.1	12.6	
Transportation and utilities	4.7	5.3	5.2	5.5	5.3	5.2	5.2	5.3	5.6	5.3	4.5	6.4	6.3	
Information	2.3	2.6	2.3	1.9	2.3	2.5	2.0	2.4	1.9	1.8	2.5	2.2	2.5	
Financial activities	5.8	5.5	5.0	5.9	5.9	5.1	5.6	5.4	5.3	5.7	4.9	4.5	4.7	
Professional and business services	12.8	11.9	12.2	13.0	12.8	12.9	13.9	13.4	13.6	14.1	13.8	13.9	13.4	
Education and health services	20.8	22.1	21.8	21.3	20.9	20.8	20.8	19.5	19.4	19.2	21.1	21.9	22.7	
Leisure and hospitality	9.8	9.8	9.4	10.0	9.1	8.9	9.3	9.2	9.3	8.9	7.2	7.1	8.3	
Other services	4.4	4.0	4.4	4.3	4.1	4.3	4.8	4.4	4.5	4.0	4.4	4.7	3.8	
Public administration	6.3	6.1	5.2	4.3	4.6	5.0	4.0	4.5	5.0	5.3	5.4	5.7	5.2	
Agriculture and related	2.4	2.3	2.5	2.3	2.8	4.0	2.9	3.3	3.7	3.8	4.1	4.0	3.0	

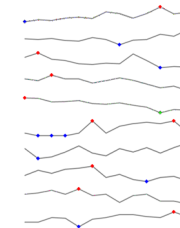
	2010	2011	2012	2013	2014	2015	2016	2017	2018	2019	2020	2021	2022
Number of employed persons age ≥ 16 years	3,180,000	3,127,000	3,184,000	3,221,000	3,269,000	3,354,000	3,449,000	3,551,000	3,613,000	3,779,000	3,595,000	3,693,000	3,828,000

Employment Demographics (continued)

P10. Percentage of civilian employment by occupation

Post-2003 Occupational Categories:

Management, business and financial operations	15.7	16.4	16.1	16.9	17.2	16.8	18.9	18.4	16.9	18.4	20.6	18.3	18.8
Professional and related	24.6	24.4	24.7	24.1	23.9	25.0	24.4	22.8	24.2	24.4	26.0	25.4	27.4
Service	17.2	17.9	16.9	16.7	16.2	16.1	16.3	16.2	17.7	16.7	15.6	15.8	15.7
Sales and related	9.9	9.6	10.6	9.9	9.9	9.2	9.6	10.1	9.7	9.0	8.4	8.7	7.9
Office and administrative support	12.1	12.0	11.2	11.3	11.5	10.8	10.7	11	10.5	10.0	8.8	9.5	9.4
Farming/forestry/fishing	1.6	1.4	1.4	1.4	1.6	2.5	1.6	2.1	2.3	2.4	2.3	2.5	1.7
Construction and extraction	5.1	4.0	4.2	4.7	5.4	4.6	4.3	5.1	4.7	5.2	4.6	5.2	5.7
Installation, maintenance, and repair	3.2	3.7	3.4	3.8	3.9	4.1	3.0	3.3	2.8	2.6	3.0	3.1	2.7
Production	5.0	5.1	5.3	5	5.4	4.9	5.0	4.4	4.9	5.0	4.5	4.5	4.3
Transportation/material moving	5.7	5.7	6.2	6.1	5.2	6.0	6.2	6.5	6.5	6.3	6.2	6.8	6.3



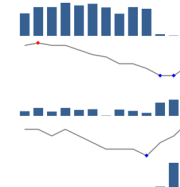
P11. Percentage of workers in or represented by a union

Union members							17.4	18.8	19.8	18.8	17.4	19.0	18.0
Represented by a union							18.7	20.2	20.5	20.2	18.6	20.0	19.1



Indicator 1. Nonfatal Occupational Injuries and Illness Reported by Employers¹

1.1 Number of occupational injuries and illnesses reported by employers	86,700	89,300	89,300	91,100	90,000	90,700	89,200	86,600	89,300	88,600	78,200	77,600	89,900
1.2 Rate of occupational injuries and illnesses per 100,000 FTE	4,800	4,900	4,800	4,800	4,600	4,400	4,300	4,000	4,000	3,800	3,500	3,500	3,900
1.3 Number of cases involving days away from work	28,700	29,900	28,500	29,900	29,200	29,400	27,000	29,300	28,800	28,000	32,000	33,100	39,600
1.4 Rate of cases involving days away from work per 100,000 FTE	1,600	1,600	1,500	1,600	1,500	1,400	1,300	1,300	1,300	1,200	1,400	1,500	1,700
1.5 Number involving >10 days away from work	12,660	13,060	12,110	12,400	12,220	12,290	9,880	11,620	11,950	9,430	14,030	26,120	



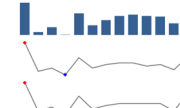
Indicator 2. Work-related Hospitalizations

2.1 Annual number of work-related hospitalizations	5,200	5,012	4,747	4,258	3,707	3,367	3,074	3,082	2,754	2,543	2,068	1,789	1,429
2.2 Annual rate of hospitalizations per 100,000 employed persons	163.5	160.3	149.1	132.2	113.4	100.9	89.1	86.8	76.2	67.3	57.5	48.4	37.3



Indicator 3. Work-related Fatal Injuries

3.1 Annual number of work-related traumatic fatalities	104	60	67	56	88	70	78	84	86	84	83	73	104
3.2.1 Annual fatality rate per 100,000 employed persons	3.6	1.9	2.1	1.7	2.7	2.1	2.3	2.4	2.4	2.2	2.3	2.0	2.7
3.2.2 Annual fatality rate per 100,000 FTE	3.6	2.1	2.3	1.9	2.9	2.2	2.4	2.5	2.5	2.5	2.5	2.1	3.0



Indicator 4. Work-related amputations with days away from work reported by employers^{1,2}

4.1 Estimated annual number of work-related amputations involving days away from work	70	320	70	70	90	120	160	90	250	130	80	240	
4.2 Estimated rate of amputations involving days away from work per 100,000 FTE	4.0	17.0	4.0	4.0	5.0	6.0	8.0	4.0	11.0	6.0	4.0	5.0	



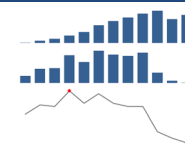
¹Beginning in 2021, indicators 1.5, 4.1, and 4.2 are presented as biennial estimates, following the change in the BLS data release schedule.

²Series break between 2010 and 2011 reflect change in OIICS codes from version 1 to version 2.

	2010	2011	2012	2013	2014	2015	2016	2017	2018	2019	2020	2021	2022
Number of employed persons age ≥ 16 years	3,180,000	3,127,000	3,184,000	3,221,000	3,269,000	3,354,000	3,449,000	3,551,000	3,613,000	3,779,000	3,595,000	3,693,000	3,828,000

Indicator 5. State workers' compensation claims for amputations with lost work-time

<i>Number of WA workers covered by state workers' comp system</i>	2,667,000	2,707,000	2,751,000	2,820,000	2,899,000	3,049,000	3,141,000	3,215,000	3,298,000	3,363,000	3,180,000	3,274,000
5.1 Number of workers' comp claims for amputations with lost work-time	175	194	195	228	211	240	230	227	235	184	163	158
5.2 Rate workers' comp claims for amputations with lost work-time per 100,000 workers covered by state workers' comp system	6.6	7.2	7.1	8.1	7.3	7.9	7.3	7.1	7.1	5.5	5.1	4.8



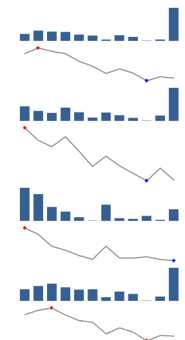
Indicator 6. Hospitalization for work-related burns¹

6.1 Number of hospitalizations for work-related burns	70	67	55	58	37	51	45	33	32	39	19	24	20
6.2 Rate of hospitalizations for work-related burns per 100,000 employed persons	4.0	2.1	1.7	1.8	1.1	1.5	1.3	0.9	0.9	1.0	0.5	0.6	0.5



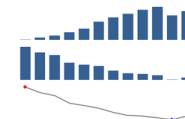
Indicator 7. Work-related musculoskeletal disorders (MSD) with days away from work reported by employers^{2,3}

7.1 Estimated number of all MSD cases involving days away from work	11,410	12,430	12,100	12,020	11,230	10,900	9,660	10,970	10,470	9,400	9,730	19,310
7.2 Estimated incidence rate of all MSD involving days away from work per 100,000 FTE	631	679	649	630	568	527	467	504	469	408	440	428
7.3 Estimated number of MSD of the neck, shoulder, and upper extremity involving days away from work	4,000	3,620	3,470	3,910	3,510	3,060	3,490	3,270	3,030	2,820	3,240	5,560
7.4 Estimated incidence rate of MSDs of neck, shoulder & upper extremity involving days away from work per 100,000 FTE	222	198	186	205	178	149	169	150	136	122	146	123
7.5 Estimated number of carpal tunnel syndrome (CTS) cases involving days away from work	560	480	320	260	190	150	350	180	170	210	160	290
7.6 Estimated incidence rate of CTS cases involving days away from work per 100,000 FTE	31	26	17	14	10	7	17	8	8	9	7	6
7.7 Estimated number of MSD of the back involving days away from work	4,880	5,320	5,620	5,140	4,810	4,870	3,820	4,580	4,250	3,350	3,900	7,780
7.8 Estimated incidence rate of MSD of the back involving days away from work per 100,000 FTE	270	290	301	269	244	236	184	210	191	153	176	173



Indicator 8. State workers' compensation claims for carpal tunnel syndrome (CTS) with lost work-time

<i>Number of WA workers covered by state workers' comp system</i>	2,667,000	2,707,000	2,751,000	2,820,000	2,899,000	3,049,000	3,141,000	3,215,000	3,298,000	3,363,000	3,180,000	3,274,000
8.1 Number of workers' comp claims for carpal tunnel syndrome (CTS) with lost work-time	919	829	787	663	631	611	536	489	481	458	390	480 (R)
8.2 Rate of workers' comp claims for CTS per 100,000 workers covered by state workers' comp system	34.5	30.6	28.6	23.5	21.8	20.0	17.1	15.2	14.6	13.6	12.3	14.7 (R)



¹Series breaks around 2015 reflect the nation's transition from version ICD-9 to ICD-10 in October 2015.

²Series break between 2010 and 2011 reflect change in OIICS codes from version 1 version 2.

³Beginning in 2021, indicators 1.5, 4.1, and 4.2 are presented as biennial estimates, following the change in the BLS data release schedule.

	2010	2011	2012	2013	2014	2015	2016	2017	2018	2019	2020	2021	2022	
Number of employed persons age ≥ 16 years	3,180,000	3,127,000	3,184,000	3,221,000	3,269,000	3,354,000	3,449,000	3,551,000	3,613,000	3,779,000	3,595,000	3,693,000	3,828,000	
Indicator 9. Hospitalizations from or with pneumoconiosis^{1,2}														
9.1 Hospital discharges with a primary or contributing diagnosis of total pneumoconiosis														
9.1.1 Number of hospital discharges	470	404	390	341	287	220	179	200	159	157	110	110	89	
9.1.2 Rate of hospitalizations per million residents	86.8	73.2	69.9	60.4	50.1	41.6	30.2	33.2	25.9	25.2	17.9	17.3	13.8	
9.1.3 Rate of hospitalizations, age-standardized	91.3	76.2	70.2	59.2	48.2	36.8	28.5	31.5	24.4	24.8	16.8	15.9	12.3	
9.2 Hospital discharge with a primary, contributing diag of coal workers' pneumoconiosis														
9.2.1 Number of hospital discharges	10	10	14	10	7	<10	<10	<10	14	10	<10	<10	<10	
9.2.2 Rate of hospitalizations per mil residents	1.8	1.8	2.5	1.8	1.2	NR	NR	NR	2.4	1.6	NR	NR	NR	
9.2.3 Rate of hospitalizations, age-standardized	2.0	1.7	2.2	1.6	1.0	NR	NR	NR	2.2	1.4	NR	NR	NR	
9.3 Hospital discharges with a primary or contributing diagnosis of asbestosis														
9.3.1 Number of hospital discharges	441	373	361	312	266	200	154	176	131	131	86	92	68	
9.3.2 Rate of hospitalizations per million residents	81.4	67.6	64.7	55.3	46.4	37.8	26.0	29.7	22.1	21	14.5	15.5	11.5	
9.3.3 Rate of hospitalizations, age-standardized	86.1	70.9	65.6	53.9	44.5	33.3	24.4	27.7	20.3	19.6	13.5	13.5	9.4	
9.4 Hospital discharges with a primary or contributing diagnosis of silicosis														
9.4.1 Number of hospital discharges	12	11	10	9	9	<10	<10	10	<10	<10	<10	<10	<10	
9.4.2 Rate of hospitalizations per million residents	2.2	2.0	1.7	1.6	1.6	NR	NR	1.7	NR	NR	NR	NR	NR	
9.4.3 Rate of hospitalizations, age-standardized	2.1	2.0	1.6	1.6	1.6	NR	NR	1.5	NR	NR	NR	NR	NR	
9.5 Hospital discharges with a primary or contributing diag of other pneumoconiosis														
9.5.1 Number of hospital discharges	8	11	5	10	6	<10	12	<10	<10	12	11	10	<10	
9.5.2 Rate of hospitalizations per million residents	1.5	2	0.9	1.8	1.0	NR	2.0	NR	NR	1.9	1.9	1.7	NR	
9.5.3 Rate of hospitalizations, age-standardized	1.4	1.7	0.7	2.0	1.0	NR	1.7	NR	NR	1.9	1.4	1.4	NR	
Indicator 10. Mortality from or with pneumoconiosis²														
10.1 Deaths with pneumoconiosis as underlying or contributing cause														
10.1.1 Number of deaths	81	71	64	85	68	64	60	54	66	45	57	47	44	
10.1.2 Death rate per million residents	14.9	12.9	11.5	15.1	11.9	10.9	10.1	9.1	10.7	7.2	9.3	7.4	6.8	
10.1.3 Death rate, age standardized	15.1	13.6	11.5	14.7	11.4	10.5	9.7	8.8	10.0	6.8	9.1	6.9	6.3	
10.2 Deaths with coal workers pneumoconiosis as underlying or contributing cause														
10.2.1 Number of deaths	2	1	0	0	1	0	1	1	2	2	0	1	0	
10.2.2 Death rate per million residents	NR	NR	NR	NR	NR	NR	NR	NR	NR	NR	NR	NR	NR	
10.2.3 Death rate, age standardized	NR	NR	NR	NR	NR	NR	NR	NR	NR	NR	NR	NR	NR	
10.3 Deaths with asbestosis as underlying or contributing cause														
10.3.1 Number of deaths	76	68	62	82	65	62	57	48	60	43	54	42	40	
10.3.2 Death rate per million residents	14.0	12.3	11.2	14.5	11.3	10.6	9.6	8.1	9.8	6.9	8.8	6.6	6.2	
10.3.3 Death rate, age standardized	14.3	13.1	11.2	14.3	10.9	10.1	9.2	8.0	9.1	6.6	8.6	6.2	5.7	
10.4 Deaths with silicosis as underlying or contributing cause														
10.4.1 Number of deaths	2	2	2	1	0	3	2	3	1	0	3	2	1	
10.4.2 Death rate per million residents	NR	NR	NR	NR	NR	NR	NR	NR	NR	NR	NR	NR	NR	
10.4.3 Death rate, age standardized	NR	NR	NR	NR	NR	NR	NR	NR	NR	NR	NR	NR	NR	
10.5 Deaths with other pneumoconiosis as underlying or contributing cause														
10.5.1 Number of deaths	1	0	0	3	2	0	2	2	3	0	0	2	3	
10.5.2 Death rate per million residents	NR	NR	NR	NR	NR	NR	NR	NR	NR	NR	NR	NR	NR	
10.5.3 Death rate, age standardized	NR	NR	NR	NR	NR	NR	NR	NR	NR	NR	NR	NR	NR	

¹Series breaks around 2015 reflect the nation's transition from version ICD-9 to ICD-10 in October 2015.

²Not reportable (NR) due to small numbers.

	2010	2011	2012	2013	2014	2015	2016	2017	2018	2019	2020	2021	2022
Number of employed persons age ≥ 16 years	3,180,000	3,127,000	3,184,000	3,221,000	3,269,000	3,354,000	3,449,000	3,551,000	3,613,000	3,779,000	3,595,000	3,693,000	3,828,000
Indicator 11. Acute work-related pesticide-associated illness and injury reported to poison control centers													
11.1 Number of case of work-related pesticide poisoning	101	91	85	81	77	91	93	84	NA	NA	NA		
11.2 Rate of work-related pesticide poisoning cases per 100,000 employed persons	3.2	2.91	2.7	2.5	2.4	2.7	2.7	2.4	NA	NA	NA		
Indicator 12. Incidence of malignant mesothelioma													
12.1 Number of incident mesothelioma cases	103	95	94	81	96	92	86	98	81	76	74	76	
12.2 Rate of incident mesothelioma cases per million residents	19	17.2	16.9	14.4	16.8	15.8	14.5	16.3	13.2	12.2	12.1	12.0	
12.3 Rate of incident mesothelioma cases per million residents, age standardized	19.7	17.3	16.6	13.4	15.8	15.1	13.7	15.4	10.6	11.0	10.9	11.1	
Indicator 13. Elevated blood lead levels among persons age 16 years or older ("Adults")													
13.1 Adults with a blood lead level (BLL) ≥5 ug/dL													
13.1.1 Number of adults with BLL ≥5 ug/dL	NA	NA	NA	NA	NA	NA	NA	NA	NA	440	220	607	
13.1.2 Prevalence rate per 100,000 employed prsns	NA	NA	NA	NA	NA	NA	NA	NA	NA	11.6	6.1	16.4	
13.1.3 Number of incident cases	NA	NA	NA	NA	NA	NA	NA	NA	NA	337	132	510	
13.1.4 Incidence rate per 100,000 employed persons	NA	NA	NA	NA	NA	NA	NA	NA	NA	8.9	3.7	13.8	
13.2 Adults with a blood lead level (BLL) ≥10 ug/dL													
13.2.1 Number of adults with BLL ≥10 ug/dL	NA	227	191	212	212	147	185	217	375	250	187	314	
13.2.2 Prevalence rate per 100,000 employed prsns	NA	7.3	6	6.6	6.5	4.4	5.4	6.1	10.4	6.6	5.2	8.5	
13.2.3 Number of incident cases	NA	103	109	120	106	74	98	106	237	155	121	244	
13.2.4 Incidence rate per 100,000 employed persons	NA	3.3	3.4	3.7	3.2	2.2	2.8	3.0	6.6	4.1	3.4	6.6	
13.3 Adults with a blood lead level (BLL) ≥25 ug/dL													
13.3.1 Number of adults with BLL ≥ 25 ug/dL	84	67	65	53	42	30	25	35	67	24	29	68	
13.3.2 Prevalence rate per 100,000 employed prsns	2.6	2.1	2.1	1.7	1.3	0.9	0.7	1.0	1.9	0.6	0.8	1.8	
13.3.3 Number of incident cases	50	21	29	23	23	17	11	17	50	14	18	60	
13.3.4 Incidence rate per 100,000 employed persons	1.5	0.7	0.9	0.7	0.7	0.5	0.3	0.5	1.4	0.4	0.5	1.6	
13.4 Adults with a blood lead level (BLL) ≥ 40 ug/dL													
13.4.1 Number of adults with BLL ≥40 ug/dL	13	10	24	10	13	7	5	7	7	5	4	10	
13.4.2 Prevalence rate per 100,000 employed prsns	0.4	0.3	0.8	0.3	0.4	0.2	0.1	0.2	0.2	0.1	0.1	0.3	
13.4.3 Number of incident cases	11	3	16	5	7	4	2	6	3	3	2	8	
13.4.4 Incidence rate per 100,000 employed persons	0.3	0.1	0.5	0.2	0.2	0.1	0.1	0.2	0.1	0.1	0.1	0.2	
Indicator 14. Workers employed in industries at high risk for occupational morbidity													
14.1 Number of persons employed in industries at high risk of occupational morbidity	155,685	165,375	159,659	127,571	131,945	134,409	138,641	141,923	149,982	152,750	150,937	147,134	
14.2 Percentage of persons employed in industries at high risk of occupational morbidity	6.7	7.0	6.8	5.2	5.2	5.2	5.2	5.1	5.3	5.3	5.0	5.2	
Indicator 15. Workers employed in occupations at high risk for occupational morbidity (discontinued after 2021, no longer collected)													
15.1 Number of persons employed in occupations at high risk of occupational morbidity	329,537	303,145	325,470	334,186	371,903	382,969	379,300	415,000	395,000	414,041	344,240		
15.2 Percentage of persons employed in occupations at high risk of occupational morbidity	14.5	13.6	14.3	13.7	15.0	15.4	14.8	15.8	14.6	14.7	13.1		

	2010	2011	2012	2013	2014	2015	2016	2017	2018	2019	2020	2021	2022
Number of employed persons age ≥ 16 years	3,180,000	3,127,000	3,184,000	3,221,000	3,269,000	3,354,000	3,449,000	3,551,000	3,613,000	3,779,000	3,595,000	3,693,000	3,828,000
Indicator 16. Workers employed in industries and occupations at high risk for occupational mortality (discontinued after 2021, no longer collected)													
16.1 Number of persons employed in industries at high risk of occupational mortality	316,303	376,458	384,315	419,771	428,700	485,126	481,118	536,000	555,000	565,292	559,258		
16.2 Percentage of persons employed in industries at high risk of occupational mortality	13.9	14.6	14.5	15.2	15.4	17.1	16.4	17.8	18.2	17.6	18.5		
16.3 Number of persons employed in occupations at high risk of occupational mortality	267,744	314,865	311,770	330,103	316,801	385,433	368,318	408,000	409,000	410,642	376,276		
16.4 Percentage of persons employed in occupations at high risk of occupational mortality	11.8	12.2	11.7	11.9	11.4	13.6	12.6	13.5	13.4	12.8	12.5		
Indicator 17. Occupational safety and health professionals (discontinued after 2015, no longer collected)													
Indicator 18. OSHA enforcement activities													
18.1 Annual number of establishments inspected by OSHA in all OSHA-covered sectors	6,946	5,641	5,120	5,125	5,045	4,341	4,335	4,099	4,554	4,936	4,507	4,547	
18.2 Total number of establishments in the state	226,052	223,340	236,095	241,210	236,829	232,984	235,511	235,987	236,609	241,312	261,218	260,506	
18.3 Estimated percentage of eligible establishments inspected by OSHA	3.1	2.5	2.3	2.1	2.1	1.9	1.8	1.7	1.9	2.0	1.7	1.7	
18.4 Annual number of employees whose work areas were inspected by OSHA	188,904	153,303	158,802	132,940	182,668	233,942	338,664	188,907	365,739	276,251	317,587	197,689	
18.5 Estimated percentage of employees in eligible establishments inspected by OSHA	6.9	5.5	5.6	4.6	6.2	7.7	10.8	5.9	11.1	8.2	10.0	6.0	
Indicator 19. Workers' Compensation Awards													
19.1 Total amount of workers' compensation benefits paid	\$2,308,748,000	\$2,316,713,000	\$2,311,697,000	\$2,331,783,000	\$2,392,919,000	\$2,404,364,000	\$2,430,746,000	\$2,464,784,000	\$2,537,805,000	\$2,614,341,000	\$2,621,657,000	\$2,782,068,000	
19.2 Average amount of workers' compensation paid per covered worker	\$866	\$856	\$840	\$827	\$825	\$789	\$774	\$767	\$770	\$777	\$824	\$850	
Indicator 20. Low Back Disorder¹													
20.1 Number of hospitalizations involving surgery for work-related low back disorders	991	941	518	677	548								
20.2 Rate of hospitalizations involving surgery for work-related low back disorder, per 100,000 employed persons	31.2	30.1	16.3	21	16.8								
20.3 Number of hospitalizations for work-related low back disorders	1,128	1,069	775	794	653								
20.4 Rate of hospitalizations for work-related low back disorders, per 100,000 employed persons	35.5	34.2	24.3	24.7	20								
Indicator 21. Asthma among Adults Caused or Made Worse by Work (Not available for WA)²													
Indicator 22. Work-Related Severe Traumatic Injury Hospitalizations³													
22.1 Number of hospitalizations for work-related severe traumatic injury	460	443	434	428	408	NA	210	224	218	215	189	194	192
22.2 Rate of hospitalizations for work-related severe traumatic injury, per 100,000 employed persons	14.5	14.2	13.6	13.3	12.5	NA	6.1	6.3	6.0	5.7	5.3	5.3	5.0
Indicator 23. Influenza Vaccination Coverage Among Healthcare Personnel (adopted in 2014)													
23.1 Percentage of Healthcare Personnel (HCP) who have Received an Influenza Vaccination					87.6%	87.1%	88.9%	89.8%	90.9%	91.1%	84.3%	80.9%	
Indicator 24. Occupational Heat-Related ED Visits (adopted in 2014 as an optional indicator, not available for WA)²													

¹This indicator, based on International Statistical Classification of Disease (ICD) codes, is undergoing revisions to accommodate the transition to ICD-10. Data will be updated once revision is complete.

²The data for this indicator are not available (NA) for WA. See CSTE indicator website for data from other states: <https://www.cste.org/page/OHIndicators>

³Series breaks around 2015 reflect the nation's transition from version ICD-9 to ICD-10 in October 2015. Estimates from 2016 on should not be compared to earlier years because of the change in case definition.