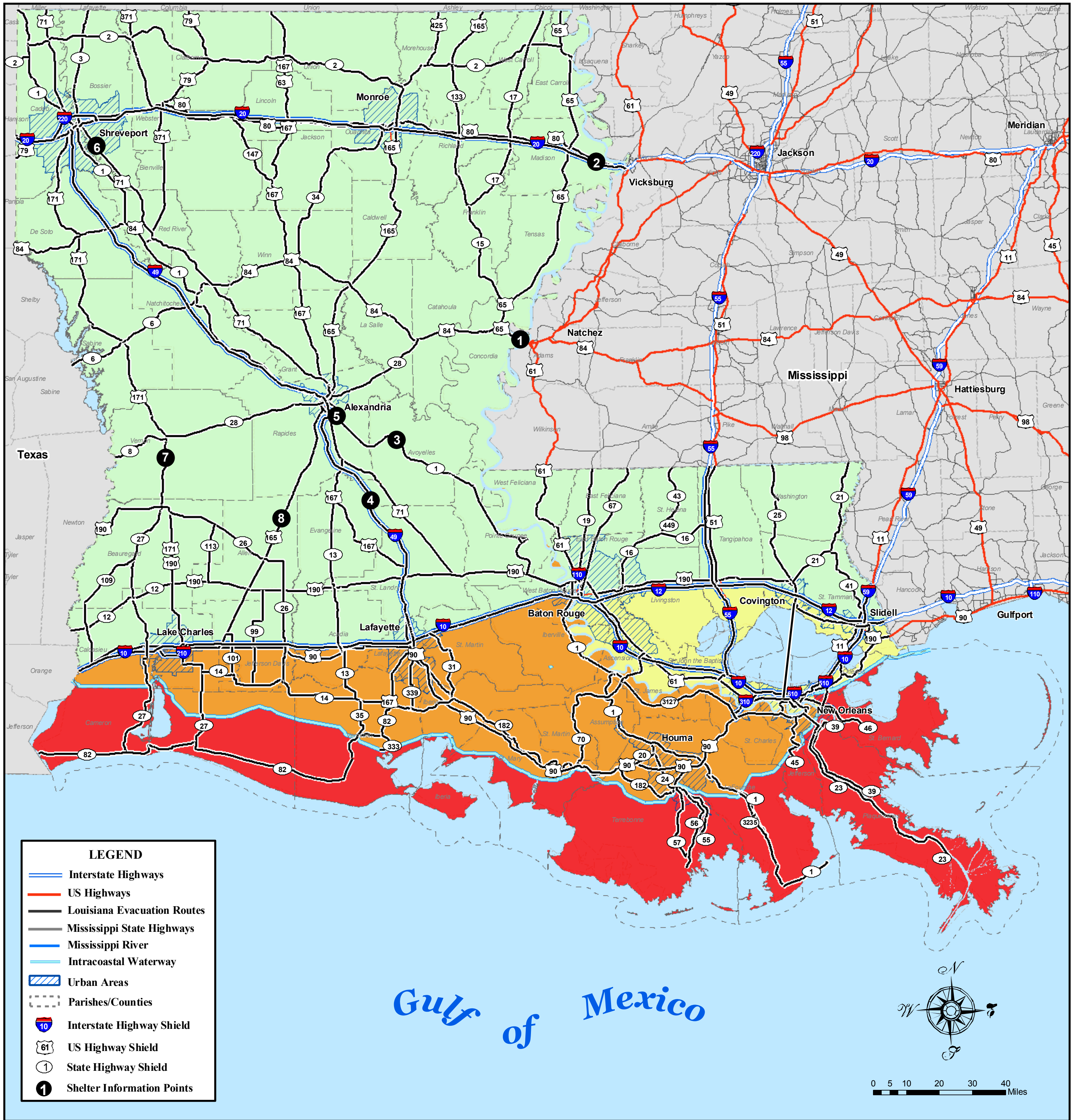


# LOUISIANA EMERGENCY EVACUATION MAP




**Phased Evacuation**

During a threat of a hurricane, a phased evacuation will be based on geographic location and time in which tropical storm winds are forecasted to reach the affected areas.

- Phase I - 50 Hours before onset of tropical storm winds.** Includes areas south of the Intracoastal Waterway. These areas are outside any levee protection system and are vulnerable to Category 1 and 2 storms. These areas are depicted in **RED** on the Evacuation Map. During Phase I there are no route restrictions.
- Phase II - 40 Hours before onset of tropical storm winds.** Includes areas south of the Mississippi River which are levee protected but remain vulnerable to Category 2 or higher storms. These areas are depicted in **ORANGE** on the Evacuation Map. During Phase II there are no route restrictions.
- Phase III - 30 Hours before onset of tropical storm winds.** Includes areas on the East Bank of the Mississippi River in the New Orleans Metropolitan Area which are within the levee protection system but remain vulnerable to a slow-moving Category 3 or any Category 4 or 5 storm. These areas are depicted in **YELLOW** on the Evacuation Map. During Phase III, certain routes will be directed and the Contraflow Plan implemented.

Phased evacuation procedures are for traffic management purposes only. Consult your local Office of Emergency Preparedness Director for further evacuation information.



*Louisiana is blessed with some of the Nation's greatest resources. When a crisis threatens, we must take steps to protect the most precious of those resources – our people. State and local agencies have worked together on a plan to evacuate Louisiana citizens from harm's way. Regardless of the location or nature of the threat, this evacuation plan is your guide to a safe and efficient evacuation. Please take the time to familiarize yourself with the contents of this guide, and discuss evacuation preparedness with your family. Working together, we can assure the safety of all our citizens during times of crisis. For more information, please visit my web site at: [www.gov.la.gov](http://www.gov.la.gov).*

Sincerely,  
**Kathleen Babineaux Blanco**  
 Governor



# EMERGENCY EVACUATION GUIDE

## I. Information points

### LOUISIANA SHELTER TASK FORCE EMERGENCY SHELTER INFORMATION POINTS FOR HURRICANE EVACUATIONS:

EVACUATION AREA OF THE STATE	INFORMATION POINT LOCATION	ADDRESS
Re-entry from Mississippi on US 65 & US 84	❶ Tourist Welcome Center	US 65 & 84 1401 Carter St. (US 84) Vidalia, LA
Re-entry from Mississippi on I-20	❷ Tourist Welcome Center	836 I-20 West Tallulah, LA
From the Southeast area on LA 1	❸ Paragon Casino	711 Paragon Place Marksville, LA
From the Southeast/Central areas on I-49	❹ Sammy's Truck Stop	I-49, Exit 53 3601 LA 115 W Bunkie, LA
From the Southeast/Central areas on US 71	❺ Med Express Office	7525 US 71 Alexandria, LA
From the Southeast/Southwest/Central areas on US 171 and I-49	❻ P.E. Gym LSU-Shreveport	One University Place Shreveport, LA
From the Southwest area on US 171	❼ Pickering High School	180 Lebleu Rd. Leesville, LA
From the Southwest/Central areas on US 165	❽ Mowad Civic Center	5 <sup>th</sup> Ave. and 10 <sup>th</sup> St. 1 blk. off US 165 Oakdale, LA

## II. Agency Contact Information

- A. **American Red Cross** (866) GET-INFO or (866) 438-4636  
[www.preparelouisiana.redcross.org](http://www.preparelouisiana.redcross.org)
1. Acadiana Chapter (Lafayette) (337) 234-7371
  2. Central Louisiana Chapter (Alexandria) (318) 442-6621
  3. Louisiana Capital Area Chapter (Baton Rouge) (225) 291-4533
  4. Northeast Louisiana Chapter (Monroe) (318) 323-5141
  5. Northwest Louisiana Chapter (Shreveport) (318) 865-9545
  6. Southeast Louisiana Chapter (Greater New Orleans) (800) 229-8191
  7. Southwest Louisiana Chapter (Lake Charles) (337) 478-5122
  8. St. Bernard Parish Chapter (Chalmette) (504) 277-8163
- B. **Louisiana Department of Transportation and Development** (225) 379-1232  
[www.dotd.state.la.us](http://www.dotd.state.la.us)
- C. **Louisiana Office of Homeland Security and Emergency Preparedness** (800) 256-7036  
[www.ohsep.louisiana.gov](http://www.ohsep.louisiana.gov)

- D. **Louisiana State Police** Road Closure Information (800) 469-4828  
[www.lsp.org](http://www.lsp.org)
1. Troop A (Baton Rouge) (800) 969-2059
  2. Troop B (Kenner) (800) 964-8076
  3. Troop C (Gray) (800) 659-5907
  4. Troop D (Lake Charles) (888) 225-5577
  5. Troop E (Alexandria) (800) 256-4160
  6. Troop F (Monroe) (866) 292-8320
  7. Troop G (Bossier City) (866) 853-6580
  8. Troop I (Lafayette) (888) 768-8746
  9. Troop L (Covington) (888) 339-8659
- or dial \*LSP (\*577) from a cellular phone
- E. **Federal Emergency Management Agency**  
[www.ready.gov](http://www.ready.gov)
- F. **National Weather Service**  
[www.srh.noaa.gov](http://www.srh.noaa.gov)
- G. **Louisiana Department of Social Services**  
[www.dss.state.la.us](http://www.dss.state.la.us)
- H. **Louisiana Department of Health and Hospitals**  
[www.dhh.state.la.us](http://www.dhh.state.la.us)

### III. Public Shelter information

Shelters are operated by trained individuals and ensure that the safety, security, and basic needs of its residents are met.

- A. **What to bring to a shelter**
- Change of clothing, blanket and pillow for each family member
  - Your disaster supply kit, including food, medications, comfort items and special items for infant or elderly family members.
- B. **What NOT to bring**  
 There are no weapons, drugs, alcohol or pets (service animals excluded) allowed in shelters.

### IV. Shelter-in-place information

“Sheltering-in-place” is a precaution aimed at keeping citizens safe while remaining indoors. **This is not the same thing as evacuating to a shelter and not recommended for hurricanes.** When a “shelter-in-place” order is given by either local or state government, citizens within the affected area should take the following protective measures:

- Go indoors and close all windows and doors.
- Turn off all sources of outside air (i.e. air conditioners and ventilation fans/ducts).
- Remain indoors until notified that it is safe to move outdoors.
- Stay tuned to your local radio/television station to receive official notices.
- Limit telephone usage for emergency calls only. This is to prevent the telephone lines from being overloaded with non-emergency calls.

### IF YOU MUST BE OUTDOORS

Protect your breathing by covering your mouth and nose with a cloth or handkerchief.

### IF YOU ARE IN YOUR VEHICLE AND CANNOT GET TO A SAFE BUILDING:

- Pull over to the side of the road.
- Turn off the engine and close windows and vents.
- Listen to the radio regularly for updated advice, instructions and conditions.

## **V. Family Communications Plan**

Setting up a communication plan ahead of time will help make sure you and your family can connect as easily and quickly as possible.

- Designate an individual outside of the state to serve as a family point of contact.  
(After a disaster, it's often easier to call out-of-state than within the affected area.)
- Make sure that all family members know who this person is and how to contact him/her.
- After a disaster or evacuation, all family members should make contact with the designated individual. Try choosing a certain time for everyone to check in.

## **VI. Family Disaster Supply Kit**

There are six basics that you should stock for your disaster supply kit: water, food, clothing and bedding, first aid supplies, tools and emergency supplies and special items. Keep these items in a waterproof container that can be easily transported from your home to your car and your safe place. Assemble your kit now to allow for immediate action during an emergency. Your family's disaster supply kit should include at least a three-day supply of:

- Water - One gallon of water per person per day
- Non-perishable food - Select food items that are compact and lightweight. Include:
  - Ready-to-eat canned meats, fruits and vegetables
  - Canned juices
  - High energy foods
  - Vitamins
  - Comfort goods
  - Condiments
  - Food for infant
- Clothing and bedding  
Include at least one complete change of clothing and footwear per person and the following weather-appropriate items:
  - Sturdy shoes or work boots
  - Rain gear
  - Blankets or sleeping bags
  - Hat and gloves
  - Thermal underwear
  - Sunglasses
- First aid supplies - Assemble a first aid kit for your home and one for each car
- Tools and emergency supplies
  - Mess kits, paper cups, plates and plastic utensils
  - Emergency preparedness manual
  - Battery-operated radio and extra batteries
  - Flashlight and extra batteries
  - Cash or traveler's checks, change
  - Non-electric can opener, utility knife
  - Fire extinguisher: small canister ABC-type
  - Tube tent
  - Pliers
  - Tape
  - Compass
  - Matches in a waterproof container
  - Aluminum foil
  - Plastic storage containers
  - Signal flare
  - Paper, pencil
  - Needles, thread
  - Medicine dropper
  - Shut-off wrench to turn off household gas and water
  - Whistle
  - Plastic sheeting

- Sanitation supplies
- Official DOTD Travel Map
- Louisiana Citizen Awareness and Disaster Evacuation Guide

■ **Special items**

- Infant and medical supplies: Remember supplies for family members with special requirements, such as infants, elderly or disabled persons and persons taking medications.
- Entertainment - Games and books
- Important family documents
  - ❖ Wills, insurance policies, contracts, deeds, stocks and bonds
  - ❖ Passports, social security cards and immunization records
  - ❖ Bank account numbers
  - ❖ Credit card account numbers and company addresses
  - ❖ Inventory of valuable household goods and important telephone numbers
  - ❖ Family records (birth, marriage, death certificates)

*Store your kit in a convenient place known to all family members. Keep a smaller version of the supply kit in the trunk of your car. Change your stored water supply every six months so it stays fresh. Replace your stored food every six months. Re-think your kit and family needs at least once a year. Replace batteries, update clothes, etc.*

**VII. Preparing your pets**

If you are a pet owner, your family’s disaster plan must include your pets. In the event of a disaster, if you must evacuate, the best thing you can do to protect your pets is to evacuate them too.

- Identify boarding facilities, veterinarians or hotels outside of the affected areas that can accept your pets. If you have notice of an impending disaster, call ahead for reservations.
- Pet-friendly shelters may be opened during an evacuation. This information will be available at shelter information points.
- Create a disaster readiness kit for your pet including food, water, first aid supplies, feeding dishes, leashes, carrier, blanket, etc.
- Make sure all family members are aware of these preparations.

**VIII. Homeland Security Advisory System**

The Homeland Security Advisory System, established in March of 2002, is a tool used to describe threat conditions for a possible terrorist attack. A color-coded threat level system is used to communicate the five threat levels to the American public. Prepare your family for these types of emergencies by following the recommendations in this guide or visit [www.ready.gov](http://www.ready.gov). For more information on Homeland Security advisories, visit the Louisiana Office of Homeland Security and Emergency Preparedness link: [www.ohsep.louisiana.gov/homeland/HSThreatAdvisory.htm](http://www.ohsep.louisiana.gov/homeland/HSThreatAdvisory.htm).



## IX. Radio Frequency System

### A. Louisiana Emergency Alert System

The following radio stations are key participants in the Louisiana Emergency Alert System. In the event of an emergency, these stations will broadcast emergency information.

Alexandria  
AM 970 (KSYL)  
AM 580/FM 96.9 (KZMZ)  
FM 93.1(KQID)

Baton Rouge  
AM 1150 (WJBO)  
FM 102.5 (WFMF)

Crowley  
FM 102.9 (KAJN)

Lafayette  
AM 1330 (KVOL)  
FM 99.9 (KTDY)

Lake Charles  
AM 1470 (KLCL)  
FM 99.5 (KHLA)

New Orleans  
AM 870 (WWL)  
FM 101.9 (WLMG)

Northeast  
AM 540/FM 101.9 (KNOE)

Ruston  
AM 1490 (KRUS)  
FM 107.5 (KXKZ)

Shreveport  
AM 1130/FM 94.5 (KWKH)

### B. NOAA Weather Radio

NOAA Weather Radio is a nationwide network of radio stations broadcasting continuous weather information direct from a nearby National Weather Service office. NWR broadcasts National Weather Service warnings, watches, forecasts and other hazard information 24 hours a day.

## X. Severe Weather Terms to know:

Natural disasters most likely to occur in Louisiana, particularly in low-lying areas bordering the Gulf of Mexico, include hurricanes and flooding due to heavy rains. Residents should be familiar with several terms that describe severe weather conditions:

- A. **Storm Surge:** An abnormal rise of the sea along a shore as the result, primarily, of the winds from a storm.
- B. **Watch:** Adverse conditions are **possible** in the specified area of the WATCH, usually within 36 hours. May be applied to thunderstorms, tornadoes, floods, or hurricanes.
- C. **Warning:** Adverse conditions are **expected** in the specified area of the WARNING, usually within 24 hours. May be applied to thunderstorms, tornadoes, floods, or hurricanes.

## XI. Measuring Hurricane Strength – The Saffir-Simpson Hurricane Scale

**Category 1:** Minimal Damage. Winds 74-95 mph. Storm surge generally 4-5 ft. above normal.

**Category 2:** Moderate Damage. Winds 96-110 mph. Storm surge generally 6-8 ft. above normal

**Category 3:** Extensive Damage. Winds 111-130 mph. Storm surge generally 9-12 ft. above normal.

**Category 4:** Extreme Damage. Winds 131-155 mph. Storm surge generally 13-18 ft. above normal.

**Category 5:** Catastrophic Damage. Winds greater than 155 mph. Storm surge generally greater than 18 ft above normal.



Citizen Corps is a nationwide grass roots movement to actively involve all Americans in making our communities and our nation safer, stronger and better prepared for all hazards and threats. We all have a role in hometown security and Citizen Corps provides local opportunities for everyone to prepare, train and volunteer. At the community level, Citizen Corps activities are coordinated by a Citizen Corps Council. These Councils bring together local leaders, citizen volunteers and the network of first responder organizations, such as fire departments, police departments and emergency medical personnel. Local Citizen Corps Councils:

- Promote and strengthen the Citizen Corps programs at the community level;
- Provide opportunities for special skills and interests;
- Develop targeted outreach for the community, including special needs groups;
- Provide training for citizens in first aid and emergency preparedness;
- Organize special projects and community events;
- Encourage cooperation and collaboration among community leaders;
- Capture smart practices and report accomplishments; and
- Create opportunities for all residents to participate.



The [Community Emergency Response Team \(CERT\) Program](#) educates people about disaster preparedness and trains them in basic disaster response skills, such as fire safety, light search and rescue, and disaster medical operations. Using their training, CERT members can assist others in their neighborhood or workplace following an event and can take a more active role in preparing their community. The program is administered by the Department of Homeland Security (DHS).



[The Fire Corps](#) promotes the use of citizen advocates to enhance the capacity of resource-constrained fire and rescue departments at all levels: volunteer, combination, and career. Citizen advocates can assist local fire departments in a range of activities including fire safety outreach, youth programs, and administrative support. Fire Corps provides resources to assist fire and rescue departments in creating opportunities for citizen advocates and promotes citizen participation. Fire Corps is funded through DHS and is managed and implemented through a partnership between the National Volunteer Fire Council, the International Association of Fire Fighters, and the International Association of Fire Chiefs.



An expanded [Neighborhood Watch Program \(NWP\)](#) incorporates terrorism awareness education into its existing crime prevention mission, while also serving as a way to bring residents together to focus on emergency preparedness and emergency response training. Funded by Department of Justice (DOJ), Neighborhood Watch is administered by the National Sheriffs' Association.



The [Medical Reserve Corps \(MRC\) Program](#) strengthens communities by helping medical, public health and other volunteers offer their expertise throughout the year as well as during local emergencies and other times of community need. MRC volunteers work in coordination with existing local emergency response programs and also supplement existing community public health initiatives, such as outreach and prevention, immunization programs, blood drives, case management, care planning, and other efforts. The MRC program is administered by Health and Human Services (HHS).



[Volunteers in Police Service \(VIPS\)](#) works to enhance the capacity of state and local law enforcement to utilize volunteers. VIPS serves as a gateway to resources and information for and about law enforcement volunteer programs. Funded by DOJ, VIPS is managed and implemented by International Association of Chiefs of Police.

**To Join Citizen Corps contact the Citizen Corps Coordinator  
at (225) 925-7500**