



# *The Newspaper*

**University of Kentucky  
Department of Neurology  
January 2023**

## **Table of Contents**

1. Table of Contents
2. [Publications/Faculty Achievements](#)
3. [Faculty Seen and Heard](#)
4. [Residents Seen and Heard/Resident Kudos/Staff Awards](#)
5. [Staff Awards Cont.](#)
6. [UK HealthCare APP of the Month - January](#)
7. [Trainee of the Month - January](#)
8. [Welcome/Events](#)
9. [Philanthropy](#)
10. [Wellness and Support Resources](#)
11. [Save the Dates](#)

## Publications



Sharoon Qaiser, MBBS, published 2 chapters in Current Diagnosis and Treatment Pediatric Neurology. Chapter 13 is entitled, "Migraine Equivalent or Episodic Syndromes in Children;" Chapter 14 is entitled, "Primary Headache Disorders: Types and Management."

## Faculty Achievements



Zain Guduru, MD, was selected as a Mentor for the American Academy of Neurology Director Mentorship Program.



Jordan Clay, MD, Julie Youssefi, MD, and Mahsa Haghighat, MD, all passed their Epilepsy boards, Congratulations!

## Faculty Seen and Heard



Julie A. Gurwell, PhD, PA-C, was interviewed for *Neurology Today*. The blog was entitled, "The 2022 best advances in Advanced Practice Practitioners: A meet and greet with Dr. Julie A. Gurwell." [Click here](#) to read the blog.



Gregory A. Jicha, MD, PhD, was featured in UKNow in an article entitled, "Promising Alzheimer's drug being studied at UK's Sanders-Brown Center on Aging receives FDA approval." [Click here](#) to read the story.

## Residents Seen and Heard



Rani Priyanka Vasireddy, MBBS, PGY 3, was featured in a story on UKNow entitled, "UK patient reflects on the stroke that saved his life." [Click here](#) to read the story.



Saniya Pervin, MBBS, PGY 2, appeared on WLEX18 News at the LEF Climbing gym. To read the news story, [click here](#).

## Residents Kudos



Andrew Welleford, MD, PhD, PGY 2, received a WOW award from a patient he evaluated in the Lexington VA ED. This award is given to someone that goes above and beyond.

Below is the comment:

"Dr. Welleford saved my life. The ED doctor said my labs were normal, so he was discharging me. At the patients request, Dr. Welleford was called for a consult." He performed a thorough neurological exam, and was spot on with the diagnosis, explaining it well."

## Staff Awards

The Specialty Care Good Sam Patient Access Center serving Neurology received a Patient Experience Award for FY23. This is a national ranking of patient satisfaction surveys.



## Staff Awards Cont.



Kim Osborne, Child Neurology Regional Clinic Coordinator, was nominated for the 2022 Amy Wilson Award.

Below are some of the comments that our child neurology faculty had to say about Kim:

"Kim is the go to person, She goes out of her way to help and has such a compassion for our department and patients, she is always there to lend an ear."

"Kim shows kindness and compassion towards all trainees. Kim is responsible for our commission clinic logistics and is instrumental in managing these clinics."

"Dr. Baumann received a 50 year Lifetime Achievement Award at CNS and dedicated to his patients and Ms. Osborne."

"Kim bends over backwards to schedule patient and better streamline patient care, she is efficient in her work and has an excellent character."

"Kim is an invaluable advocate for children in rural Appalachia who have complicated medical conditions. She is the center of team coordination between Appalachian outreach clinics, UKHC child neurology, EEG, MRI, and KCH, and does a wonderful job. Our commission clinic workflow is flawless, thanks to Kim and constant effort."

"Kim has personally helped out trainees from other countries understand how a medical center is operated."

"Kim has been instrumental in establishing and conducting the new NF1 support group."

"During Covid19, she helped all of us navigate a very rigid and frequently evolving requirements, to make sure the regional clinics were operational throughout the pandemic."

"Kim O, as everyone affectionately calls her, is the mama bear of child neurology, she is a beautiful thoughtful friend and goes way beyond what her job requires."

## UK HealthCare APP of the Month - January



Brittany Young, MSN, AGACNP-BC, APRN, is the January APP of the Month. Congratulations! Below are some comments she received:

"I have worked with Brittany for nearly 5 years. I have witnessed her not only an excellent healthcare provider but also as a mentor, colleague, and leader. She has been faced with some difficult tasks of which she has dealt with an open mind and common sense. Her no nonsense way of communicating is clear and demands respect."

"She has been outstanding helping organizing APP coverage for stroke, emu, good Sam coverage due to shortage of APP on FMLA and interns."

"Teamwork. Brittany Young has demonstrated amazing leadership and commitment to our patients as the senior inpatient APP. She organized APP coverage when a colleague went on FML and our intern complement was reduced."

"Brittany's contributions to the APP program and to the Neurology department are remarkable. She is resourceful and found creative ways to re-organize the service schedule with APP coverage while the stroke, general neurology, and epilepsy services were short with residents' coverage. She did all this several times over the past couple of months and on a very short notice. She always demonstrates professionalism and grace. She is an effective and great communicator."

## Trainee of the Month - January



Allahshukur Ilgarli, MD, PGY 4,  
Below are some comments Dr. Ilgarli received:

### **Innovation:**

"As chief resident, he introduced a novel way to make entire year schedule well in advance. This schedule incorporates variables from off service residents/interns, jeopardy system, over flows, buddy call system etc. This has brought equity among different level trainees along with safe patient coverage."

### **Teamwork & Compassion:**

"Recently KCH is experiencing high volume of patients and covering teams may feel overwhelmed. During month of January (and other months when he is covering inpatient service), there were 4 different times when he volunteered himself to cover for admitting team to help admitting patients after his duty hours. He stayed late over weekends to be extra help for procedures. In addition, he has always stepped in to fill the gap if one of his colleague needs help."

"Dr Ilgarli is our Child Neurology Chief Resident. As a chief resident, he has introduced novel approach to our scheduling with entire year schedule readily available all the time. He performs his chief resident duties with responsibility and professionalism. His peers have praised him for always ready to help and step in when needed. His excellent academics are evident by his exceptional performance in RITE exam. He is humble, passionate, professional and hard working physician. His teamwork, resilience and hard work help him to practice UK DIRECT values."

"I have worked with Dr. Ilgarli for years now. Dr. Ilgarli has shown impressive growth over the years. He is one of the brightest residents we have ever had, scoring top in the country on his in-training exam. However, I can attest how he will come to work at 2 or 3 am when on our inpatient service. He will admit for float. He takes time to counsel families and actually cares about our patients. When Dr. Ilgarli says he has done something or will do something, one knows they can take him for his word. I know I can trust him."

"Dr. Ilgarli is an amazing teacher and role model. He is excited to teach and its great to see him interacting with the peds patients because it is obvious that he cares so much!"

## Welcome New Education Staff



Caitlin Moran joined our Neurology Education office in January. Her title is Program Coordinator supporting adult neurology programs and ACGME Fellowships. Caitlin is a native of Lexington, has a background in customer service and administrative assistance. In her free time she enjoys attending her nephews sporting events, taking her dog anywhere she possibly can with her, concerts, trying locally owned restaurants, watching movies, and reading. Caitlin tells me that she also loves baking and trying new recipes – (per her words, “even if they turn out terrible.”) She also loves spending time with her family who all live in Lexington as well.

## Events

### Dr. Stephen Ryan's Retirement Festivities at the VA





## Philanthropy

### Robert J. Baumann, MD Resident Endowment Fund

The endowment was established in honor of Dr. Baumann's skills as a clinician and educator. It provides much needed funding for resident learning opportunities and research-related needs that are not otherwise supported.



Education is one of the core missions of our department - we are always looking for ways to improve the curriculum and educational opportunities we provide. Our goal is to continue to attract the highest caliber trainees to our programs, provide comprehensive neurological education, and increase the number of neurologists available in the commonwealth capable of providing cutting edge patient care and who are dedicated to life-long learning. In 2015, the Robert J. Baumann, MD Fund for Neurology Residents was established to help us support our goals for the neurology resident program. Dr. Baumann has been a familiar face among neurology residents at the University of Kentucky for four decades. Dr. Baumann truly embodies the

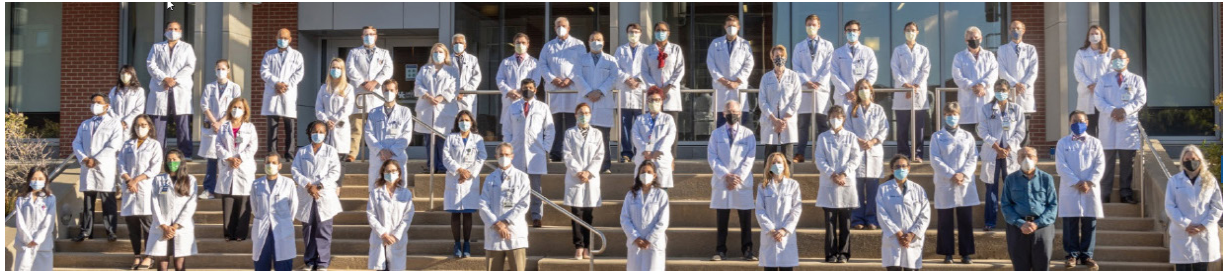
teaching mission of our department. His devotion to the field of medicine and training the next generation of providers is truly second to none.

In keeping with Dr. Baumann's passion for providing a strong medical education, the endowment will bolster the continued expansion of the Residency Program and ensure that our trainees have a well-rounded experience, positioning us to be among the best, and most sought out programs in the United States. Please consider contributing to the continued growth of our program and making an impact on future neurology residents by making a gift to the Robert J. Baumann MD Fund for Neurology Residents. All donations will be acknowledged and are tax deductible.



Donations can be made by contacting our Director of Philanthropy, Lisa Deaton Greer. (859-323-5374 or [lisa.greer@uky.edu](mailto:lisa.greer@uky.edu)) or by clicking here <https://neurology.med.uky.edu/neurology-alumni>.

# Wellness and Support Resources



[Click here](#) to find more helpful information on our Department of Neurology website.

## UK Wellness Resources

Academic Resources offer a wide variety of online and in-person tips, tools, and suggestions.

## Workplace Safety

UK HealthCare is committed to safety and well-being of patients, visitors, and staff in our enterprise. We take all forms of aggression, violence, and threats seriously. Sometimes frontline staff don't report these incidents, because they feel disruptive behavior is "part of the job". There is uncertainty about how and where to report.

## Childcare

Several childcare facilities are located on or adjacent to the UK campus. Please note that some of these programs have a 9-10 month waiting list, so if you are interested, please talk to the directors as early as possible.

## Financial Health

You and your family have access to live financial experts for guidance on financial questions, big or small.

## Diversity and Inclusion

As healthcare providers, we have an obligation to do no harm. But our obligations go further to prevent harm from befalling others because of our inaction or silence.

## Spiritual

Various resources are available for spiritual support through the GME program.

## Abuse Response and Reporting

For procedures to report abuse, and for details of patient rights, click the title.

## The Vicarious Trauma Toolkit

The *Vicarious Trauma Toolkit* (VTT) was developed on the premise that exposure to the traumatic experiences of other people—known as vicarious trauma—is an inevitable occupational challenge for the fields of victim services, emergency medical services, fire services, law enforcement, and other allied professionals; however, organizations can mitigate the potentially negative effects of trauma exposure by becoming vicarious trauma-informed.

## Well-Being

The University of Kentucky GME Wellness In Training Committee is devoted to helping GME learners achieve their highest potential through the integration of the physical, social, emotional, environmental and economic aspects of wellness.

## Physician Support Line

This is a peer-to-peer support line for physicians by physicians that is available to US based DO / MD / International equivalents at the attending, fellow, resident, intern, medical student, or research level. Any discussions are confidential and protected.

## Lexington Medical Society Physician Wellness Program

Services include individual counseling, couples/family sessions, and sessions with spouse/partners alone. These confidential and free counseling services are available to anyone.

## UK Work-Life Counseling

Free and confidential counseling for life stress, work performance, substance abuse concerns, and mental health.

## UK REFER Program

A Family Center Counseling service provided as a benefit to UK employees that focuses on personal, couple, and/or family concerns.

## Emergent Psychiatry Services

UK Department of Psychiatry Outpatient Clinic Access to confidential consultation is available through the UK Outpatient Clinic during business hours, five days per week. Call 859-323-6021 and follow the prompts for the Outpatient Clinic.

## The Ridge Behavioral System

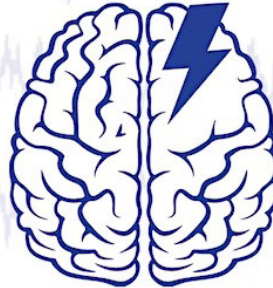
Access to confidential consultation regarding the need for emergency psychiatric services is available to 24 hours per day, seven days a week. The house staff officer is to call 859-268-6400 and ask for the Assessment Office and identify oneself as a UK resident/fellow needing immediate evaluation.



## Save the Dates

### **STRAW 4:** Basic & Clinical Principles of Cerebrovascular Disease

April 19-20, 2023



Lexington, KY

Stroke Translational Research Advancement Workshop  
Hosted by UK Center for Advanced Translational Stroke Science (CATSS)

## **AAN Annual Meeting Registration is open now Boston, MA April 22-27**



Rachel Ward-Mitchell, RN, BSN, would like to invite you to the virtual epilepsy support group meeting every other week via Zoom. This meeting will replace the in-person monthly meeting for now. If you would like to join the meetings please contact Rachel at 859.218.5053 or through Central Kentucky Epilepsy Network <https://www.facebook.com/CentralKentuckyEpilepsySupportNetwork>.

Please submit contributions for the February  
Newspaper to Lee Anne Rudd, ([lee.rudd@uky.edu](mailto:lee.rudd@uky.edu)).