

The background of the top half of the page is a complex, glowing blue neural network. It features several large, multi-lobed cell bodies (soma) with numerous thin, branching processes (dendrites and axons) extending outwards. Interspersed among these structures are small, bright orange and yellow light points, some of which appear to be at the junctions of the neural fibers. The overall effect is a dynamic and interconnected web of light against a dark blue background.

# *The Newspaper*

**University of Kentucky  
Department of Neurology  
September 2022**

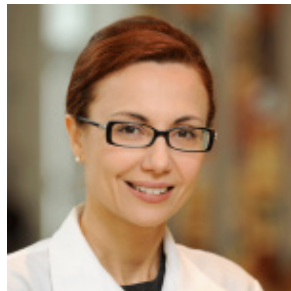
## **Table of Contents**

1. Table of Contents
2. [Publications/Presentations](#)
3. [Presentations Cont./Departmental Trainee of the Month](#)
4. [Departmental Trainee of the Month Cont.](#)
5. [Alumni News/Seen & Heard](#)
6. [Faculty Kudos/Faculty & Staff Kudos](#)
7. [Welcome](#)
8. [Philanthropy](#)
9. [Wellness and Support Resources](#)
10. [Events](#)
11. [Save the Dates](#)

## Publications

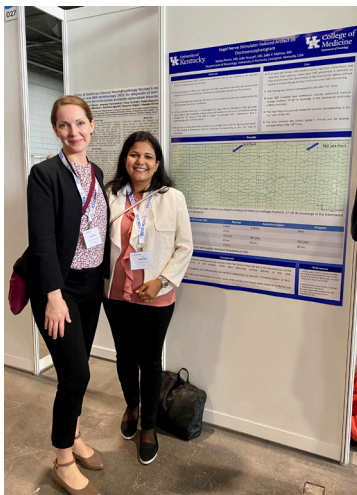


Abusamra K, Kini A, Sudhakar P, Ryan S. Bilateral optic neuritis and myocarditis after the first dose of COVID-19 vaccine. *ScienceDirect*. 2022 Vol 2, 100139.



Clay JL, Villamar MF, Bensalem-Owen MK. Comments on "Pharmacist involvement with antiepileptic therapy for status epilepticus in the emergency department". *Am J Emerg Med*. 2022 Sep 28:S0735-6757(22)00601-5. Epub ahead of print.

## Presentations



Julie Youssefi, MD, Sally Mathias, MD, and Saniya Pervin, MD, PGY 3, presented a poster on "Vagal nerve stimulator induced artifact on electroencephalogram," at the International Clinical Neurophysiology Conference in Geneva, Switzerland.

## Presentations Cont.



Suhas Gangadhara, MD, gave a talk to 50 Anderson Co. EMS personnel regarding, "strokes and other acute neurological topics."

## Departmental Trainee of the Month - September



Lauren Bojarski, MD, PGY 3.

### **Collective Responsibility**

"Dr. Bojarski has been a strong advocate for our residency program and has been instrumental in implementing the virtual residency handbook, being a mentor to medical students and attracting them to neurology, implementing numerous wellness activities. Pre-interview meet and greet sessions were a huge success last year and she has played a significant role in them and continues to do so for this academic year. Special

thanks to her and her husband for making our program's video."

"I want to send an appreciation message for Lauren Bojarski. She is doing a commendable job for our wellness group. She has even managed to work on wellness activities during her vacation. Needs to be truly recognized."

"Dr. Bojarski has put in tremendous efforts on various fronts to build and grow our residency program. She has taken ownership and leadership of the resident handbook right from her intern year. She happily volunteers on various committees and provides valuable input. She is very active in the resident wellness committee and helps organize various events for the residents."

## Departmental Trainee of the Month - September Cont.

### **Caring and Excellence**

“A big shout out to her for everything she does for the program, for her co-residents and above all for her patients. Clinically, she is performing above her PGY level and even when service was extremely busy, she was on top of every case. In addition, she took every opportunity to teach medical students for which they were so appreciative. She helped make the week fly by.”

“I have witnessed an exponential clinical growth and maturity in the last year or so. She is proactive during rounds, takes the entire team including her junior residents and students under her wing and leads the service. I have seen her blossom into a wonderful senior, who encourages her juniors to excel and at the same time she is an amazing co-resident who cheers loudly for her classmates and seniors. She is very respectful in her interactions with everyone.”

"Dr. Bojarski was a pleasure to work with, she led the team with confidence and was highly knowledgeable. She was patient and kindly took time out of her day to help me improve my note writing skills, and instilled multiple teaching points throughout the day directed towards medical students. She is a wonderful physician who is passionate about her field and her patients' care. She was great at handling tough conversations, and allowing the patient time and space to ask questions."

“She is very empathetic to the patients and families. Communication skills are excellent. We had a complicated patient with active neurological and psychiatric symptoms, and she has done an excellent job communicating the plan with the nurse, patient/family, and referring physician. This was one of the toughest conversations, but she handled it extremely well.”



## Alumni News



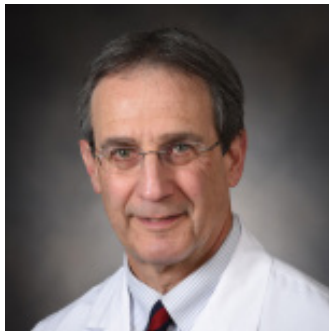
Wali Qayoumi, MD, (2016-2020)

Dr. Qayoumi and his wife, Jasmine, were blessed with a baby girl, Camila. She was born September 26, and weighed 6lbs and 11oz. Congratulations to the family.

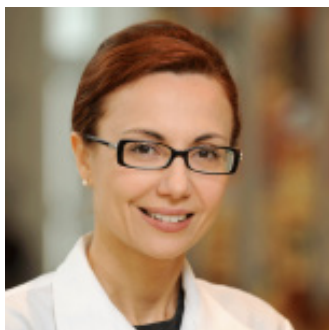
## Seen and Heard



Sally Mathias, MD, was asked to give a blurb on mentorship for National Mentoring Month. [Click here](#) to read the story.



Larry B. Goldstein, MD, recorded a segment for the AUPN Leadership Minute. [Click here](#) to listen.



Meriem Bensalem-Owen, MD, did a career development series of the Sharp Waves podcast for the International League Against Epilepsy. Dr. Bensalem-Owen answers questions about her career as a medical doctor. [Click here](#) to listen or read the podcast.

## Faculty Kudos



Ima Ebong, MD, received the following note from a grateful patient:

"Thank you very much for all the advice and help you have given me. I'm very grateful to have you as my Neurologist. I appreciate your compassion and empathy, not many show those qualities to a newer patient but you made me feel at ease. Gabapentin helps me tremendously, it eases the burning, the pin prick sensations and feelings of mild electrical shock sensations subside and nearly go away while on this medication. Thank you for calling in a refill for me, to me it provides the relief I need to function and finish my daily activities without being interrupted by the terrible symptoms that accompany my Neuropathy. You're not only a great Neurologist, you are also a beautiful and genuine healer."



Tarek Ali, MBBS, MEd, received positive feedback from one of his patients at Good Sam, "My experience at UKHC with Dr. Ali have been excellent."



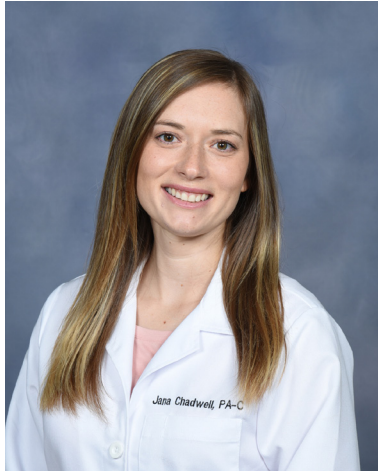
Ruta Yardi-Andress, MD, received positive feedback from a patients parents, she said Dr. Yardi is number 1 in their book, and they recommend her to everyone they meet with children having seizure problems.

## Staff & Faculty Kudos



Lindsey Noll, PA-C, Susan Sergent, PA-C and Julie Gurwell, PA-C, PhD, (faculty) were all nominated for APP of the month for September.

## Welcome New PA Residents



Jana Chadwell MSPAS, PA-C

Jana was born in Port Charlotte, Florida but spent her childhood in the rural areas of Russia with her missionary parents before coming back to the United States for high school and college. She graduated from the University of South Florida with her BA in Humanities and Cultural Studies in 2015. Because of her passion for medicine, Jana was accepted into the University of Kentucky and this past July obtained her master's degree in physician assistant studies. She is excited to begin her career as a PA resident in Neurology.



Kelly McCormick, MSPAS, PA-C

Kelly graduated from UKPA 2022, accepted to the second PA Neurology Residency cohort with a focus on Outpatient care. He originally hails from Ontario, Canada, but has spent his entire adult life in the State of Kentucky. He originally graduated with a degree in Business Marketing from the University of Kentucky. After years in the workforce, returned to school as a Non-traditional student, realized his love of medicine, eventually getting accepted and graduating from UKPA.

## Philanthropy

### Robert J. Baumann, MD Resident Endowment Fund

The endowment was established in honor of Dr. Baumann's skills as a clinician and educator. It provides much needed funding for resident learning opportunities and research-related needs that are not otherwise supported.



Education is one of the core missions of our department - we are always looking for ways to improve the curriculum and educational opportunities we provide. Our goal is to continue to attract the highest caliber trainees to our programs, provide comprehensive neurological education, and increase the number of neurologists available in the commonwealth capable of providing cutting edge patient care and who are dedicated to life-long learning. In 2015, the Robert J. Baumann, MD Fund for Neurology Residents was established to help us support our goals for the neurology resident program. Dr. Baumann has been a familiar face among neurology residents at the University of Kentucky for four decades. Dr. Baumann truly embodies the

teaching mission of our department. His devotion to the field of medicine and training the next generation of providers is truly second to none.

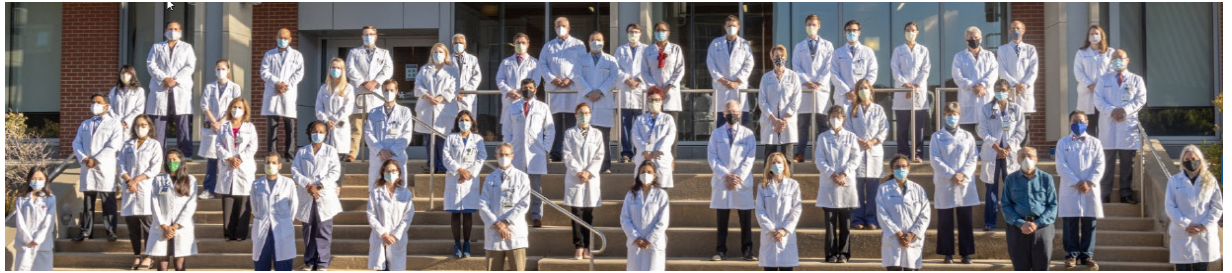
In keeping with Dr. Baumann's passion for providing a strong medical education, the endowment will bolster the continued expansion of the Residency Program and ensure that our trainees have a well-rounded experience, positioning us to be among the best, and most sought out programs in the United States. Please consider contributing to the continued growth of our program and making an impact on future neurology residents by making a gift to the Robert J. Baumann MD Fund for Neurology Residents. All donations will be acknowledged and are tax deductible.



Donations can be made by contacting our Director of Philanthropy, Lisa Deaton Greer. (859-323-5374 or [lisa.greer@uky.edu](mailto:lisa.greer@uky.edu)) or by clicking here <https://neurology.med.uky.edu/neurology-alumni>.



# Wellness and Support Resources



[Click here](#) to find more helpful information on our Department of Neurology website.

## UK Wellness Resources

Academic Resources offer a wide variety of online and in-person tips, tools, and suggestions.

## Workplace Safety

UK HealthCare is committed to safety and well-being of patients, visitors, and staff in our enterprise. We take all forms of aggression, violence, and threats seriously. Sometimes frontline staff don't report these incidents, because they feel disruptive behavior is "part of the job". There is uncertainty about how and where to report.

## Childcare

Several childcare facilities are located on or adjacent to the UK campus. Please note that some of these programs have a 9-10 month waiting list, so if you are interested, please talk to the directors as early as possible.

## Financial Health

You and your family have access to live financial experts for guidance on financial questions, big or small.

## Diversity and Inclusion

As healthcare providers, we have an obligation to do no harm. But our obligations go further to prevent harm from befalling others because of our inaction or silence.

## Spiritual

Various resources are available for spiritual support through the GME program.

## Abuse Response and Reporting

For procedures to report abuse, and for details of patient rights, click the title.

## The Vicarious Trauma Toolkit

The *Vicarious Trauma Toolkit* (VTT) was developed on the premise that exposure to the traumatic experiences of other people—known as vicarious trauma—is an inevitable occupational challenge for the fields of victim services, emergency medical services, fire services, law enforcement, and other allied professionals; however, organizations can mitigate the potentially negative effects of trauma exposure by becoming vicarious trauma-informed.

## Well-Being

The University of Kentucky GME Wellness In Training Committee is devoted to helping GME learners achieve their highest potential through the integration of the physical, social, emotional, environmental and economic aspects of wellness.

## Physician Support Line

This is a peer-to-peer support line for physicians by physicians that is available to US based DO / MD / International equivalents at the attending, fellow, resident, intern, medical student, or research level. Any discussions are confidential and protected.

## Lexington Medical Society Physician Wellness Program

Services include individual counseling, couples/family sessions, and sessions with spouse/partners alone. These confidential and free counseling services are available to anyone.

## UK Work-Life Counseling

Free and confidential counseling for life stress, work performance, substance abuse concerns, and mental health.

## UK REFER Program

A Family Center Counseling service provided as a benefit to UK employees that focuses on personal, couple, and/or family concerns.

## Emergent Psychiatry Services

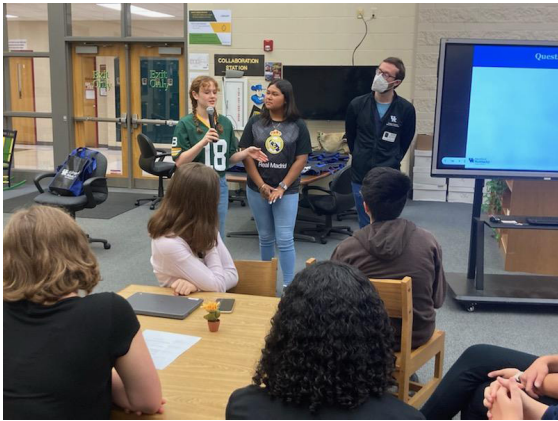
UK Department of Psychiatry Outpatient Clinic Access to confidential consultation is available through the UK Outpatient Clinic during business hours, five days per week. Call 859-323-6021 and follow the prompts for the Outpatient Clinic.

## The Ridge Behavioral System

Access to confidential consultation regarding the need for emergency psychiatric services is available to 24 hours per day, seven days a week. The house staff officer is to call 859-268-6400 and ask for the Assessment Office and identify oneself as a UK resident/fellow needing immediate evaluation.

# Events

## Frederick Douglass High School Sophomore Scholars



## Hiking at Raven's Run



**Save the Dates**

**Annual Markesbery  
Scientific Symposium  
Lee T. Todd Auditorium 152  
November 18, 11AM-4:15 PM**

**International Stroke Conference  
February 8-10, 2023  
Dallas, TX + Virtual**

Rachel Ward-Mitchell, RN, BSN, would like to invite you to the virtual epilepsy support group meeting every other week via Zoom. This meeting will replace the in-person monthly meeting for now. If you would like to join the meetings please contact Rachel at 859.218.5053 or through Central Kentucky Epilepsy Network <https://www.facebook.com/CentralKentuckyEpilepsySupportNetwork>.

Please submit contributions for the October  
Newspaper to Lee Anne Rudd, ([lee.rudd@uky.edu](mailto:lee.rudd@uky.edu)).