

# Integrated Safety Management Program:

## 7 Guiding Principles of ISM

- BALANCED PRIORITIES
- OPERATIONS
- AUTHORIZATION  
CLEAR ROLES AND RESPONSIBILITIES
- LINE MANAGEMENT RESPONSIBILITY
- COMPETENCE COMMENSURATE WITH
- HAZARD CONTROLS TAILORED TO WORK BEING PERFORMED
- IDENTIFICATION OF SAFETY STANDARDS AND



## 5 Core Functions

- DEFINE SCOPE OF WORK
- ANALYZE THE HAZARDS
- DEVELOP AND IMPLEMENT HAZARD CONTROLS
- PERFORM WORK WITHIN CONTROLS
- PROVIDE FEEDBACK AND IMPROVEMENT



# A strong resilient safety culture is the foundation of a sustainable ISM Program.

## This foundation must include:

- Commitment at all levels
- Safety should be treated as an investment, not an expense
- Safety development through effective training and education
- An integrated system for risk assessment, prevention and control
- Addressing every reported safety concern and deficiency
- A blame-free work environment



# Every Job, Project or Task Has Some Residual Risk

## Low

- Safety Controls can be planned by the worker.
- Proceed with supervisor authorization.

## Low-Medium

- Safety controls are planned by both the worker and supervisor.
- A second worker knowledgeable of the task and hazards is in the vicinity.
- Proceed with supervisor authorization.

## Medium

- Have the Safety Department review and approve the completed THA.
- A written and approved procedure may be required by the Safety Department.
- Two qualified workers must be in place before work can proceed.
- Limit the number of authorized workers in the hazard area.

## Medium-High

- Have the Safety Department review and approve the completed THA.
- A written and approved procedure is required and must be authorized by the Safety Department and the MagLab Director or his designee.

## High

- The activity will not be performed.

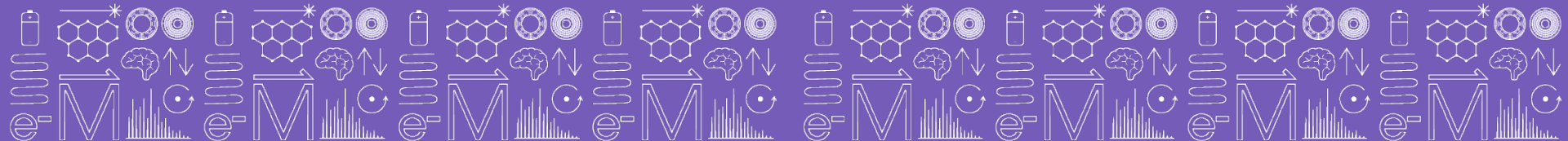


Asses the Hazard Level for the job, project or task

Hazard Assessment Matrix		Complexity		
		Simple	Moderate	Difficult
Familiarity Level	Very Familiar	1	2	3
	Somewhat Familiar	2	3	4
	Unfamiliar	3	4	5

Define Residual Risk using assessed hazard level and (worst case scenario) consequences

Integrated Safety Management Risk Assessment Matrix					
Assessed Hazard Level	Consequences				
	Negligible	Minor	Moderate	Significant	Severe
5	Low Med	Medium	Med High	High	High
4	Low	Low Med	Medium	Med High	High
3	Low	Low Med	Medium	Med High	Med High
2	Low	Low Med	Low Med	Medium	Medium
1	Low	Low	Low Med	Low Med	Medium



Tasks	Potential Hazards	Controls	Residual Risk	Authorizations
			HAZARD CONSEQ	
			RESIDUAL	
			HAZARD CONSEQ	
			RESIDUAL	
			HAZARD CONSEQ	
			RESIDUAL	

Hazard Assessment Matrix		Complexity		
		Simple	Moderate	Difficult
Familiarity Level	Very Familiar	1	2	3
	Somewhat Familiar	2	3	4
	Unfamiliar	3	4	5

**Low**

- Safety Controls can be planned by the worker.
- Proceed with supervisor authorization.

**Low-Medium**

- Safety controls are planned by both the worker and supervisor.
- A second worker knowledgeable of the task and hazards is in the vicinity.
- Proceed with supervisor authorization.

**Medium**

- Have the Safety Department review and approve the completed THA.
- A written and approved procedure may be required by the Safety Department.
- Two qualified workers must be in place before work can proceed.
- Limit the number of authorized workers in the hazard area.

**Medium-High**

- Have the Safety Department review and approve the completed THA.
- A written and approved procedure is required and must be authorized by the Safety Department and the MagLab Director or his designee.

**High**

- The activity will not be performed.

Integrated Safety Management Risk Assessment Matrix					
Assessed Hazard	Consequences				
	Negligible	Minor	Moderate	Significant	Severe
5	Low Med	Medium	Med High	High	High
4	Low	Low Med	Medium	Med High	High
3	Low	Low Med	Medium	Med High	Med High
2	Low	Low Med	Low Med	Medium	Medium
1	Low	Low	Low Med	Low Med	Medium