

SLDS Grant Program Overview



Contents

1

SLDS
Program
Overview



2

SLDS
Program
Staff



3

State
Support
Team





Statewide Longitudinal Data Systems Grant Program Overview

SLDS Grant Awards to Date

51 GRANTEES
(STATES & TERRITORIES)

\$721 MILLION
(AWARDED TOTAL)

Number of SLDS Grants Received:

3+ 2 1 0

Program Goals

Enable grantees to design, develop, and implement SLDSs to efficiently and accurately manage, analyze, disaggregate, report, and use individual student P-20W+ (early childhood through workforce) data.



**PROVIDE
CLASSROOM
INSIGHTS**



**IMPROVE
ADMINISTRATIVE
EFFICIENCY**

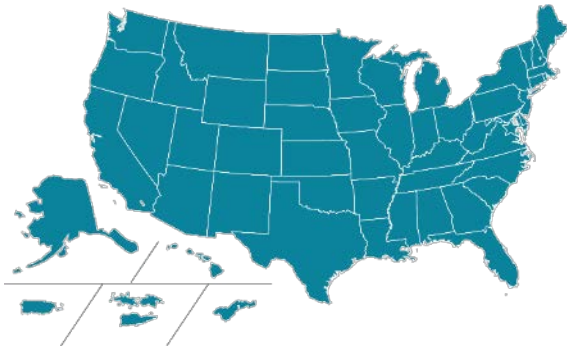


**ENABLE
ACTIONABLE
RESEARCH**



**PROMOTE
WORKFORCE
DEVELOPMENT**

Program Details



ELIGIBLE APPLICANTS:

State education agencies of

- 50 States
- District of Columbia
- Puerto Rico
- U.S. Virgin Islands
- American Samoa
- Guam
- Northern Mariana Islands



GRANT TYPE:

Cooperative agreements
(more active federal government involvement than in typical grants)

ADMINISTERED BY:



Origin & Purpose

2002



LEGISLATIVE ORIGIN:

Education Sciences Reform Act &
Educational Technical Assistance Act

2002

History & Evolving Focus

2005



FOCUS AREA:
K12 Data

OF GRANTS:
14

AVERAGE AWARD:
\$3.7M

2002

2005

History & Evolving Focus

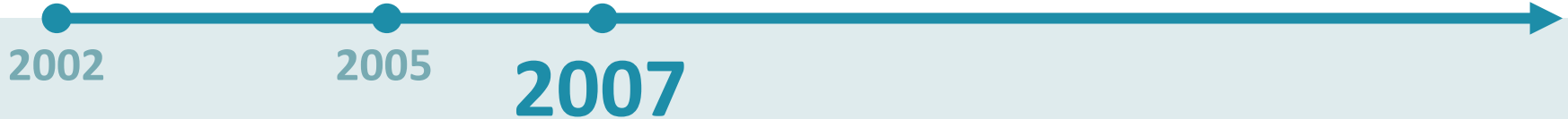
2007



FOCUS AREA:
K12 Data

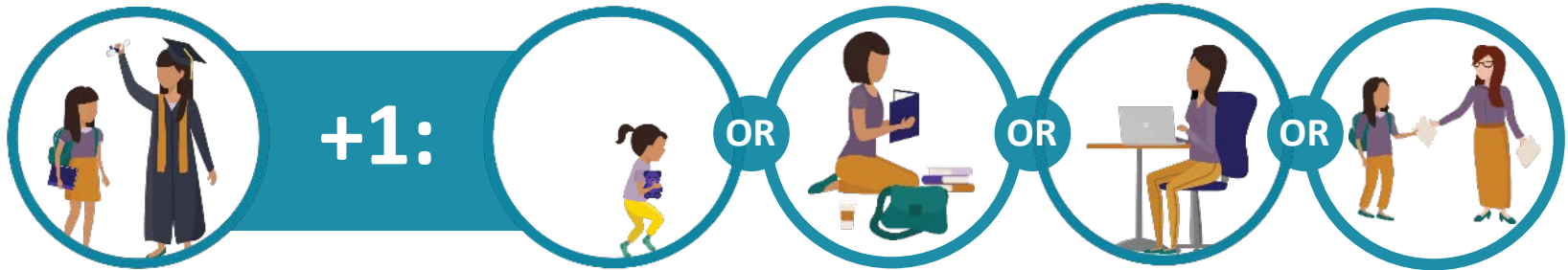
OF GRANTS:
13

AVERAGE AWARD:
\$4.8M



History & Evolving Focus

2009



FOCUS AREAS:

K12 + 1 of the following: PreK, Postsecondary, or Workforce Data; or Teacher–Student Data Link

OF GRANTS:

27 Grants

AVERAGE AWARD:

\$5.6M



History & Evolving Focus

2009



FOCUS AREAS:

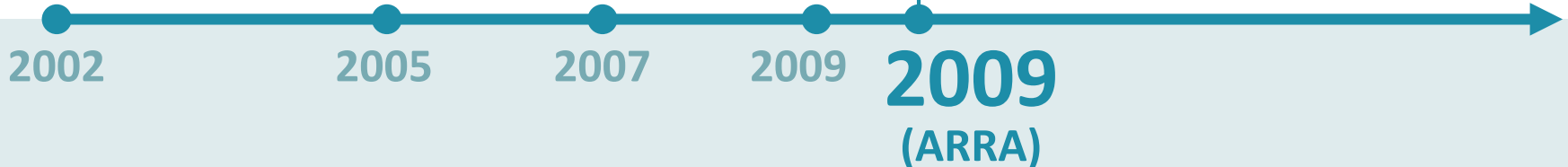
K12, PreK, Postsecondary, or Workforce Data;
and Teacher-Student Data Link

OF GRANTS:

20 Grants

AVERAGE AWARD:

\$12.5M



History & Evolving Focus

2012



FOCUS AREAS:

K12, PreK, Postsecondary, *or*
Workforce Data

OF GRANTS:

24 Grants

AVERAGE AWARD:

\$4.1M



Summary: Awards & Evolving Focus

| | 2005 | 2007 | 2009 | 2009 ARRA | 2012 | 2015 |
|-------------------------|--------|--------|--------|-----------|--------|--------|
| Number of Grants | 14 | 13 | 27 | 20 | 24 | 16 |
| Average Award | \$3.7M | \$4.8M | \$5.6M | \$12.5M | \$4.1M | \$6.5M |
| Focus of Grant | | | | | | |
| K12 Data | ● | ● | ● | ● | + | |
| PreK Data | | | + | ● | + | |
| Postsecondary Data | | | + | ● | + | |
| Workforce Data | | | + | ● | + | |
| Student-Teacher Link | | | + | ● | | |
| Data Use* | | | | | | ● |

● Required focus of grant.

+ Plus one **OR** only one of these

* ONE or TWO of the following: Fiscal Equity & Return on Investment, Educator Talent Management, Early Learning, College & Career, Evaluation & Research, **OR** Instructional Support

Collaboration

The SLDS Grant Program **collaborates with related TA providers and organizations** to support state work on longitudinal data systems.

These activities are content relevant and SLDS related, and they have included

- joint TA visits
- joint meetings and events
- communities of practice
- joint presentations and webinars
- review of documents





SLDS Program Staff

<https://slds.grads360.org/#communities/pdc/documents/15586>

Meet the SLDS Program Officers (**POs**)



NANCY SHARKEY

Nancy.Sharkey@ed.gov

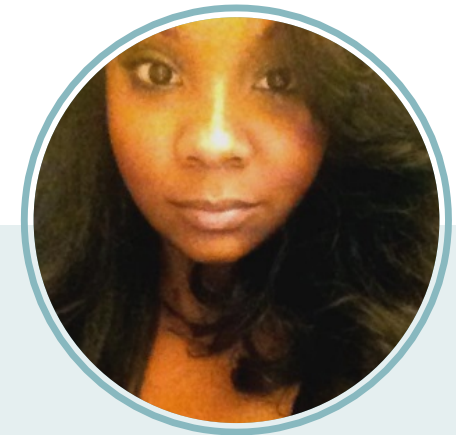
(202) 245-7689



CHARLES MCGREW

Charles.McGrew@ed.gov

(859) 421-0606



KRISTEN KING

Kristen.King@ed.gov

(202) 245-8192

PO: Roles & Responsibilities

Monitor grantees' progress toward meeting the goals of their projects and of the SLDS Grant Program overall.

They do this by monitoring cooperative agreements to track grantee progress, financial drawdowns, and technical assistance needs.



PO: Roles & Responsibilities

- Review progress with grantee personnel at least monthly
- Initiate responses to TA requests and coordinate with Department staff, TA providers, other states, and other sources of assistance to address those requests
- Record solutions and outcomes of TA requests and integrate them into a broader training or assistance agenda
- Conduct site visits to review progress and identify grantees' strengths and areas in need of support regarding grant deliverables



PO: Roles & Responsibilities

New in grant monitoring: **Data Security Monitoring**

“Use of data supported by these grants must be in accordance with the Family Educational Rights and Privacy Act, as well as any other applicable Federal and State laws or regulations concerning the confidentiality of individual records.”

How will this be implemented?

- Updating questions on the Annual Performance Report (APR)
- Adding protocols to the monitoring visits



PO: Roles & Responsibilities

New in grant monitoring: **Data Security Monitoring**
Documentation needed in advance for PTAC review

- Data security policies
- Appropriate use / acceptable use
- Non-disclosure agreements
- Role-based access
- MOUs
- Vendor agreements
- Public reporting/methodology

Be able to describe and show the alignment of these policies and practices to your **state** laws and regulations



PO: Roles & Responsibilities

What's new in grant monitoring:

Data security monitoring changes—what we do NOT need

- Algorithms
- Technology brands/types

Redaction is an option for items such as server locations and IP addresses.



Meet the SLDS Program Analysts (**PAs**)



AMANDA MUSICK

Amanda.Musick@ed.gov

(703) 955-4682



LEANNE TAYLOR

Leanne.Taylor@aemcorp.com

(571) 353-1495

PA: Roles & Responsibilities

- Support POs to ensure that grantees successfully fulfill SLDS grant requirements
- Serve as **liaison** among grantees, POs, and State Support Team
- Assist with grantee monitoring and support through regular update calls and documentation of grantees' progress and issues



PA: Roles & Responsibilities

- Assist with submission and review of annual and final grant reports and other required grantee documentation
- Plan, participate in, and draft reports from site visits
- Assist SST with TA activities including workgroups, webinars, and meetings
- Analyze data to identify project risks and TA needs



Learn More About the SLDS Grant Program

The screenshot displays the IES NCES National Center for Education Statistics website. The main header includes the IES NCES logo and a search bar. Below the header, the page title is "STATEWIDE LONGITUDINAL DATA SYSTEMS GRANT PROGRAM" with a search bar. A navigation menu lists: OVERVIEW, GRANT INFORMATION, GRANTEE STATES, RESOURCES, EFFECTIVE PRACTICES CONFERENCES, RELATED INITIATIVES, and CONTACT. The main content area features four columns: 1. GRANTEE INFORMATION: A map of the United States with several states highlighted in blue. Text below reads: "View information about our grant awards or get information about grantee states on our map." 2. PUBLICATIONS: An image of a document cover. Text below reads: "View Best Practices, Guides, Issue Briefs, State Reports, and Targeted Publications." 3. WEBINARS: An image of a video player interface. Text below reads: "Webinars for states to demonstrate products they have developed, share best practices, and discuss issues of interest." 4. STATE SUPPORT TEAM TECHNICAL ASSISTANCE: An image of three people standing next to a bar chart. Text below reads: "The SLDS State Support Team (SST) is a group of data system experts whose primary objective is the direct support of states around developing, managing, using, and sustaining statewide longitudinal data systems (SLDS)." Below these columns is a blue box with the text: "Better decisions require better information. This principle lies at the heart of the Statewide Longitudinal Data Systems (SLDS) Grant Program. Through grants and a growing range of services and resources, the program has helped propel the successful design, development, implementation, and expansion of K12 and P-20W (early learning through the workforce) longitudinal data systems. Click here to learn more about our program." At the bottom left, there is a section titled "WHAT'S NEW AT SLDS" with two entries: "NEW RELEASE: SLDS Issue Brief: Using ECIDS Data to Support Continuous Quality Improvement" and "NEW RELEASE: SLDS Webinar Summary: Fostering a Culture of Data". At the bottom right, there is a box titled "LEARN MORE ABOUT SLDS GRANT PROGRAM" with the SLDS logo.



Visit the SLDS website at <https://nces.ed.gov/programs/slds/>



SLDS State Support Team & Other Technical Assistance

State Support Team (**SST**) – Who Are They?

State Support Team: A group of data systems experts whose primary objective is the direct support of states and territories around *developing, managing, using, and sustaining* SLDSs.



State Support Team

Some common areas of SST assistance include

- data governance
- stakeholder engagement
- project management
- sustainability
- data use
- transparency
- collaboration and linkage of data
- vendor management
- system design
- strategic planning
- implementation of research agendas



Types of SST Assistance

INDIVIDUAL ASSISTANCE

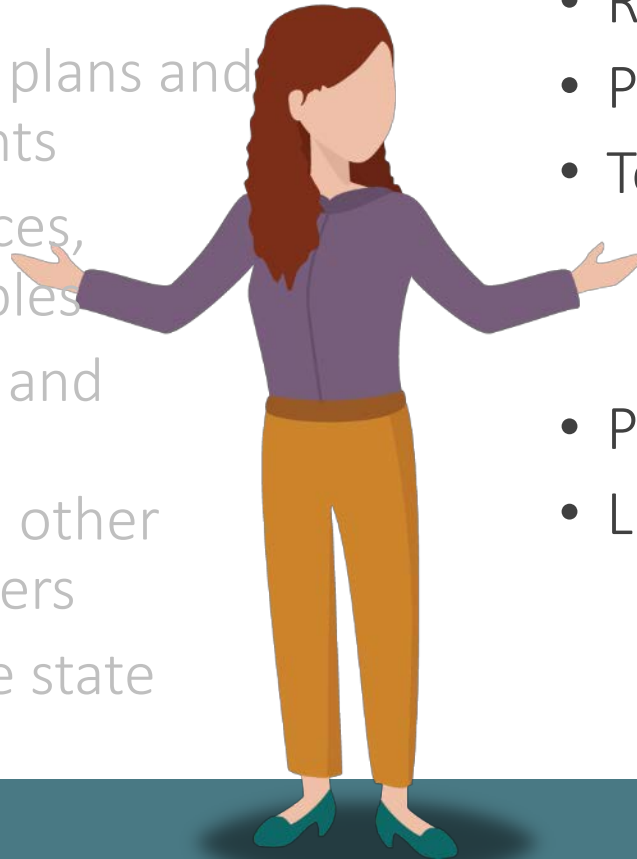
- Hold check-in calls and on-site visits
- Review project plans and other documents
- Provide resources, training, examples
- Connect states and territories with their peers and other related TA centers
- Help determine state needs



Types of SST Assistance

INDIVIDUAL ASSISTANCE

- Hold check-in calls and on-site visits
- Review project plans and other documents
- Provide resources, training, examples
- Connect states and territories with their peers and other related TA centers
- Help determine state needs



MULTI-STATE ASSISTANCE

- Best Practices Conference
- Resource-sharing repository
- Publications
- Topical workgroups
 - Webinars
 - Communities of practice
- Personnel Exchange Network
- Listserv



Personnel Exchange Network (PEN)

The Personnel Exchange Network provides grantees and non-grantees the opportunity to visit another state to learn effective strategies on a variety of SLDS-related topics including data use, data governance, stakeholder engagement, systems architecture, and sustainability.

Host states have the opportunity to share their expertise and lessons learned.

For more information, please contact your state's State Support Team member.



SST Points of Contact



Bill Hurwitch



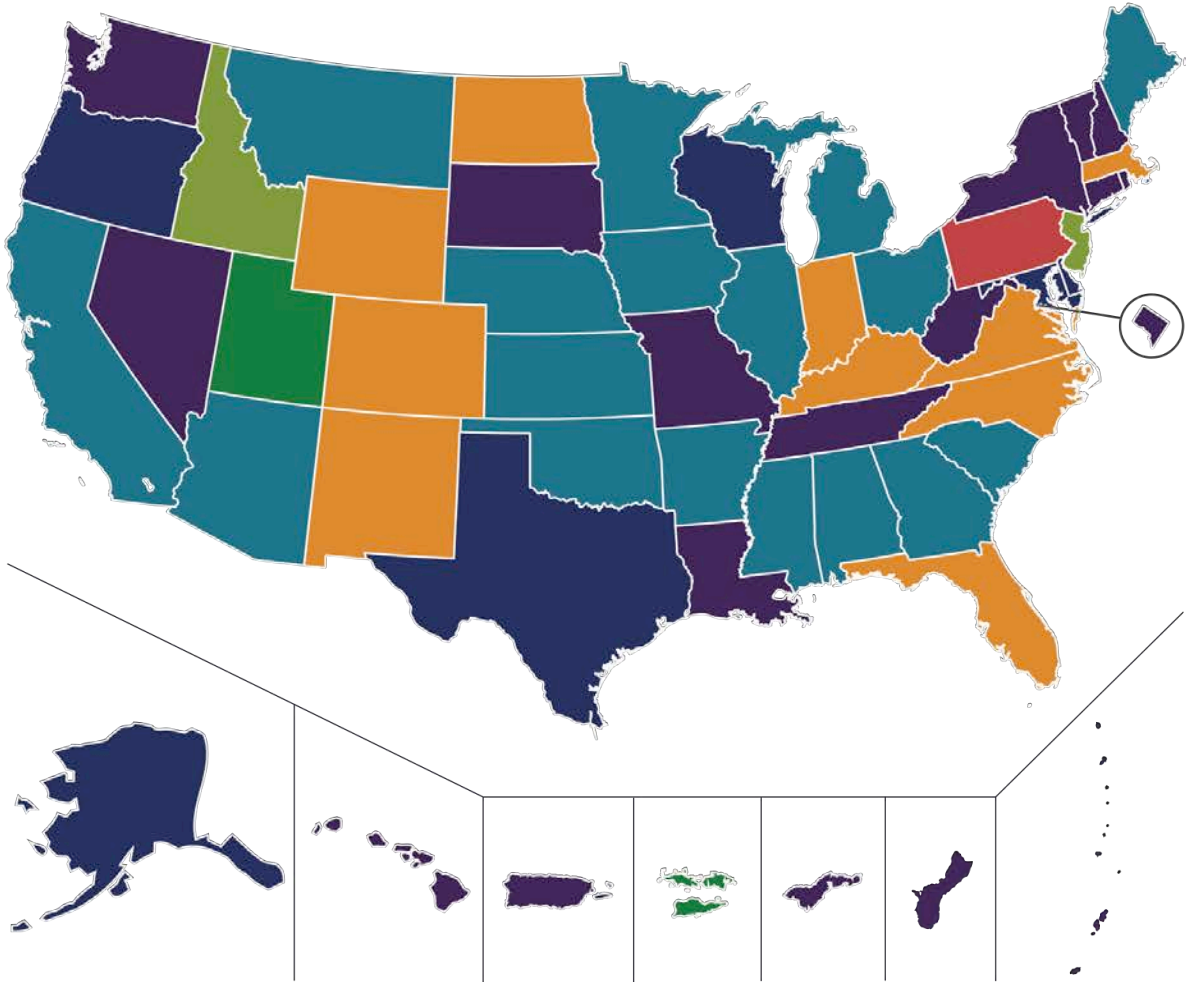
Carla Howe



Corey Chatis



Jeff Sellers



Kathi Gillaspay



Kathy Gosa



Sean Cottrell

Collaboration

Coordination and collaboration with other TA centers and SLDS-related organizations is an expectation of SLDS TA.

Several SST members serve as **points of contact** for our partners:



Publications & Resources

The SLDS team produces various types of products to capture best practices from the field and meet the evolving needs of the community

- Best Practices Briefs
- Issue Briefs
- Guides
- Spotlights

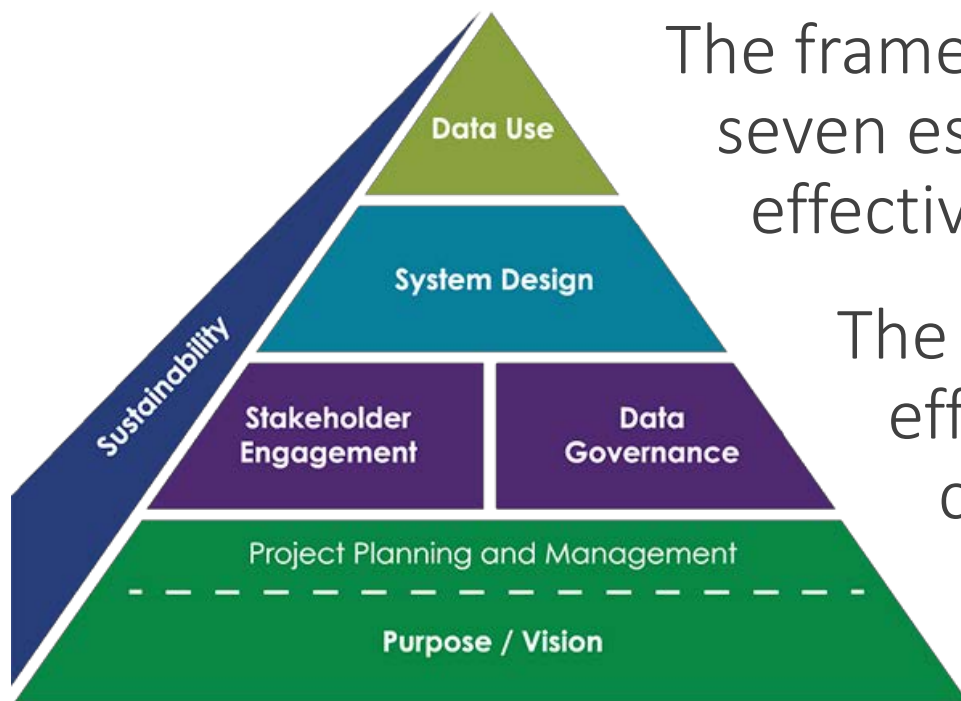


Search or browse resources at <https://slds.grads360.org/#p=19>



Communities of Practice

SLDS Communities of Practice are based on the [Framework for Data Systems](#).



The framework is composed of seven essential components of an effective SLDS.

The SST organizes its TA efforts based on these components.



Webinars

Webinars provide venues for states and territories to

- demonstrate products they have developed
- share best practices
- discuss issues of interest
- share valuable knowledge in a timely fashion

All webinars are recorded, and many have webinar summaries available on GRADS. Webinars are open to staff from **all** state and local education agencies.

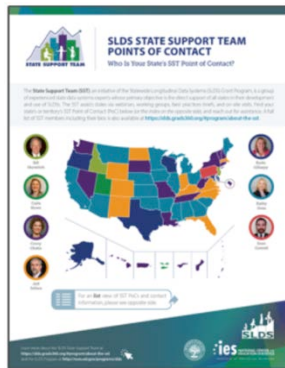


For More Information on SLDS TA



Visit GRADS360° at <https://slds.grads360.org>

Email your SST Point of Contact.



Find your Point of Contact at
[https://slds.grads360.org/
#communities/
pdc/documents/14522](https://slds.grads360.org/#communities/pdc/documents/14522)



Questions?

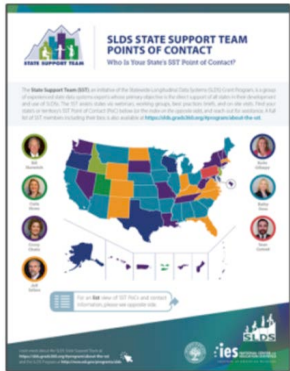


Visit the SLDS website at <https://nces.ed.gov/programs/slds/>

Contacts & Additional Resources

For more info about the SST and to request support:

- SLDS GRADS360° website: <http://slds.grads360.org>



The graphic titled "SLDS STATE SUPPORT TEAM POINTS OF CONTACT" features a map of the United States with colored regions. Surrounding the map are circular icons representing various support team members. Text on the graphic includes "Who is Your State's SST Point of Contact?" and "The State Support Team (SST) is an integral part of the SLDS program...".

Find your SST Point of Contact at
<https://slds.grads360.org/#communities/pdc/documents/14522>



Learn More About the SLDS Grant Program

The screenshot displays the website for the IES/NCES National Center for Education Statistics, specifically the Statewide Longitudinal Data Systems (SLDS) Grant Program. The header includes the IES/NCES logo and a search bar. The main navigation bar lists categories: OVERVIEW, GRANT INFORMATION, GRANTEE STATES, RESOURCES, EFFECTIVE PRACTICES CONFERENCES, RELATED INITIATIVES, and CONTACT. Below this, there are four main content areas: 1. GRANTEE INFORMATION: A map of the United States with several states highlighted in blue. Text below reads: "View information about our grant awards or get information about grantee states on our map." 2. PUBLICATIONS: An image of a document cover. Text below reads: "View Best Practices, Guides, Issue Briefs, State Reports, and Targeted Publications." 3. WEBINARS: An icon of a video player. Text below reads: "Webinars for states to demonstrate products they have developed, share best practices, and discuss issues of interest." 4. STATE SUPPORT TEAM TECHNICAL ASSISTANCE: An icon of people working together. Text below reads: "The SLDS State Support Team (SST) is a group of data system experts whose primary objective is the direct support of states around developing, managing, using, and sustaining statewide longitudinal data systems (SLDS)." Below these sections is a blue box with the text: "Better decisions require better information. This principle lies at the heart of the Statewide Longitudinal Data Systems (SLDS) Grant Program. Through grants and a growing range of services and resources, the program has helped propel the successful design, development, implementation, and expansion of K12 and P-20W (early learning through the workforce) longitudinal data systems. Click here to learn more about our program." At the bottom, there are two sections: "WHAT'S NEW AT SLDS" with two news items: "NEW RELEASE: SLDS Issue Brief: Using ECIDS Data to Support Continuous Quality Improvement" and "NEW RELEASE: SLDS Webinar Summary: Fostering a Culture of Data"; and "LEARN MORE ABOUT SLDS GRANT PROGRAM" with a small SLDS logo icon.



Visit the SLDS website at <https://nces.ed.gov/programs/slds/>