

Follow label instructions  
to help apply  
pesticides safely!



## We'll help you find assistance with:

- emergency treatment for humans and animals
- pesticide clean-up and disposal
- laboratory analyses
- pesticide incident investigation

## NPIC provides pesticide information to:

- general public
- health care providers, physicians, veterinarians
- local, state, and federal agencies, including school districts

visit us online:  
**npic.orst.edu**

## You've Got Questions? We've Got Answers!

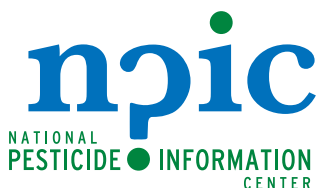


call toll-free

# 1.800.858.7378

8:00 am to 12:00 pm PT  
Monday - Friday

Or visit us anytime on the web at  
[npic.orst.edu](http://npic.orst.edu)



**OREGON STATE UNIVERSITY**

310 Weniger Hall  
Corvallis, OR 97331-6502

1.800.858.7378  
[npic.orst.edu](http://npic.orst.edu)  
[npic@ace.orst.edu](mailto:npic@ace.orst.edu)



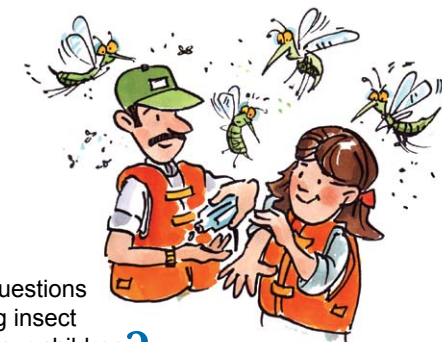
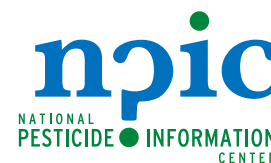
NPIC is a cooperative agreement (#X8-83458501) between Oregon State University and the United States Environmental Protection Agency.

## Pesticide Questions? We've Got Answers!

Bug Sprays...  
Weed Killers...  
Disinfectants...  
and more!



Are you pregnant and  
wondering about using  
a pesticide inside your home?



Do you have questions  
about using insect  
repellents on your children?



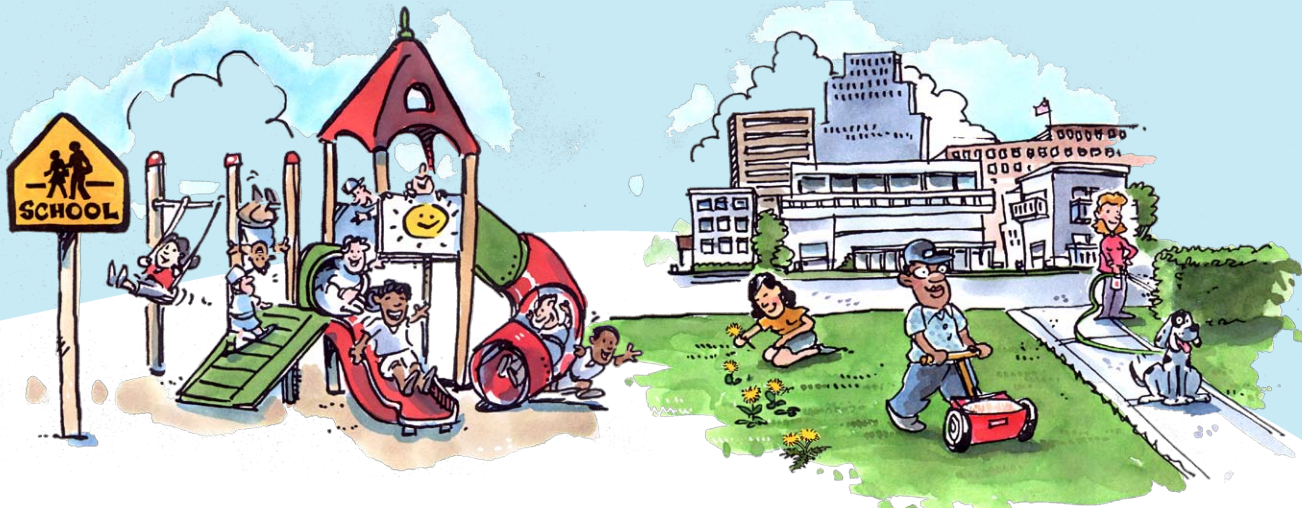
call toll-free  
**1.800.858.7378**



## Friendly Pesticide Specialists can help you:

- understand the technical/chemical information on the labels
- evaluate toxicity and risks
- explore possible alternatives
- get some tips on reducing risk
- identify the signs of pesticide poisoning
- obtain general information on pesticide regulations

## Read the label first!



# Be smart about pesticides!

## Got Questions?

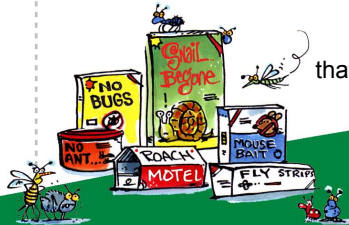
Is your neighbor using pesticides, and you're wondering about your risk?



Do you have questions about the pesticides used to control mosquitoes and ticks in your community?

After a termite control treatment, do you wonder when to return?

Did you know that baits are pesticides?



Call the National Pesticide Information Center at: **1.800.858.7378**

## Get Answers!

Whether you're in the city or the countryside...

Whether you're combating weeds or bed bugs...

Whether you're a homeowner, a renter, or a pesticide applicator...

Get objective, science-based chemical, health, and environmental information about pesticides.

How long should you keep pets off a treated lawn?

