

A man in a dark suit and glasses is lying on his back on a paved road, positioned over a yellow double line. The background shows a clear blue sky, streetlights, and some commercial buildings in the distance. The overall scene is surreal and evocative.

Confessions of a Recovering Engineer

TRANSPORTATION FOR A STRONG TOWN

Charles L. Marohn, Jr. | Civil Engineer, Urban Planner, Author
@clmarohn | @strongtowns | www.strongtowns.org



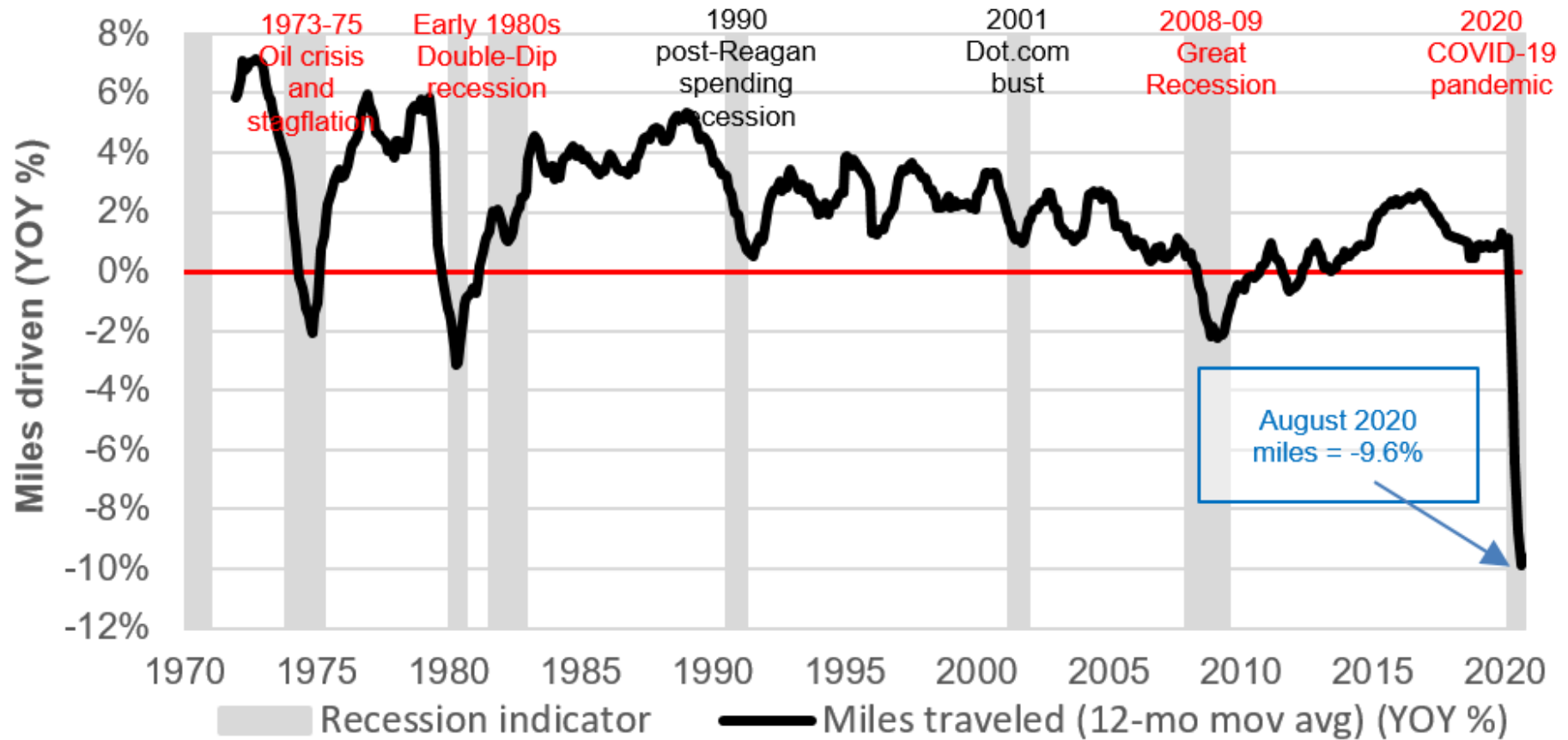
Civic Center Hill Street
Downtown
101 SOUTH
Stadium Way Dodge Stadium
1/2 mile

15

EXIT 25

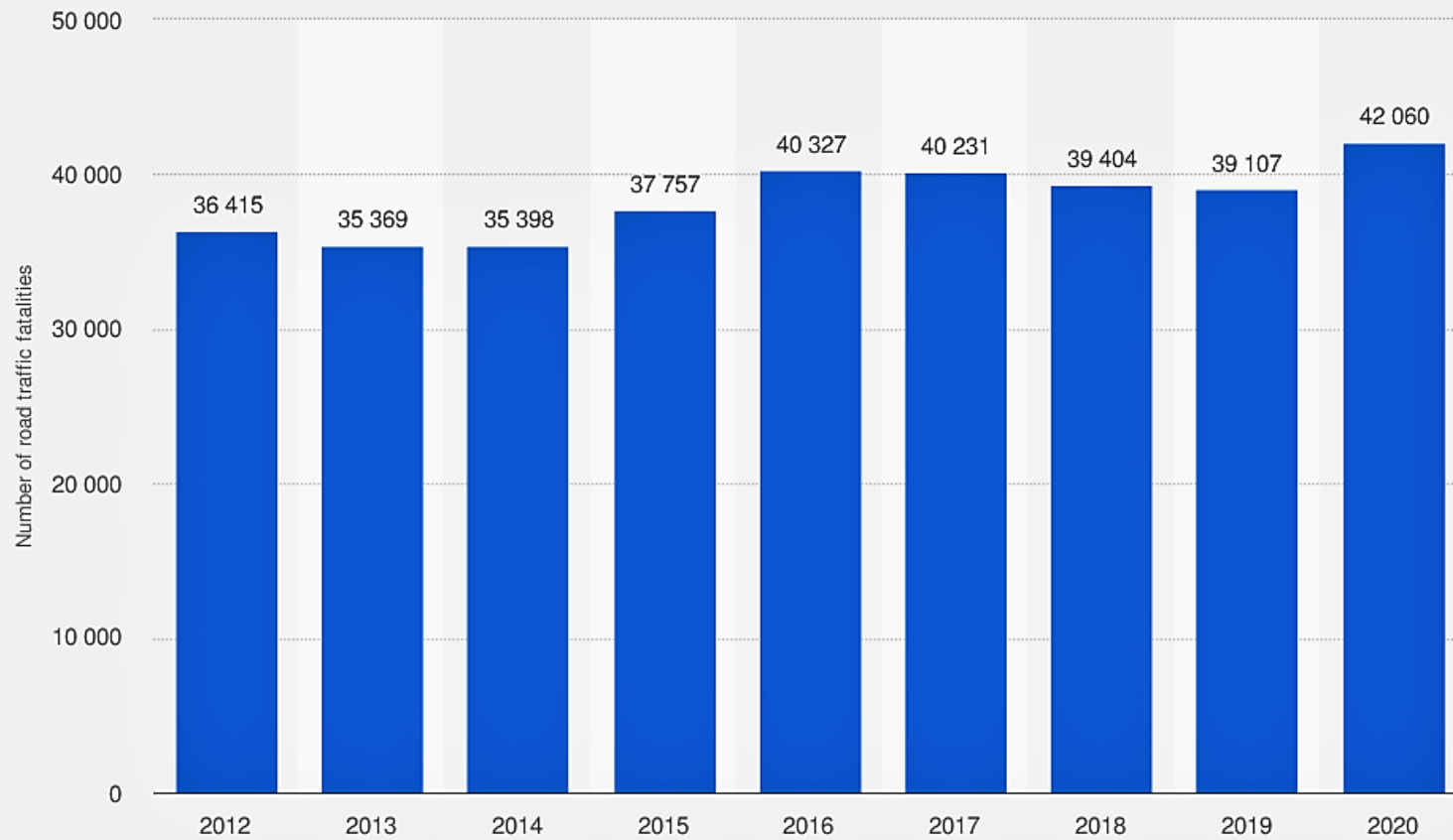
Vehicle miles traveled before and after recessions

(Year-over-year % change in 12-month moving average of miles)



Source: FHA; NBER; RSM US

Number of road traffic fatalities in the United States from 2012 to 2020



Sources
National Safety Council; NCHS
© Statista 2021

Additional Information:
United States; National Safety Council; NCHS; 2012 to 2020



How do we explain this?



The
Reckless
Driver™

← NEWS

2020 Fatality Data Show Increased Traffic Fatalities During Pandemic

Risky Driving Behaviors Including Failure to Wear a Seatbelt, Speeding, and Drinking While Driving Identified as Contributing Factors

Pedestrian Deaths Spike in U.S. as Reckless Driving Surges

Fatalities are climbing to record levels two years into the pandemic. Authorities cite drivers' anxiety levels, larger vehicles and fraying social norms.



It's not just your imagination. Drivers in the pandemic have gotten more reckless

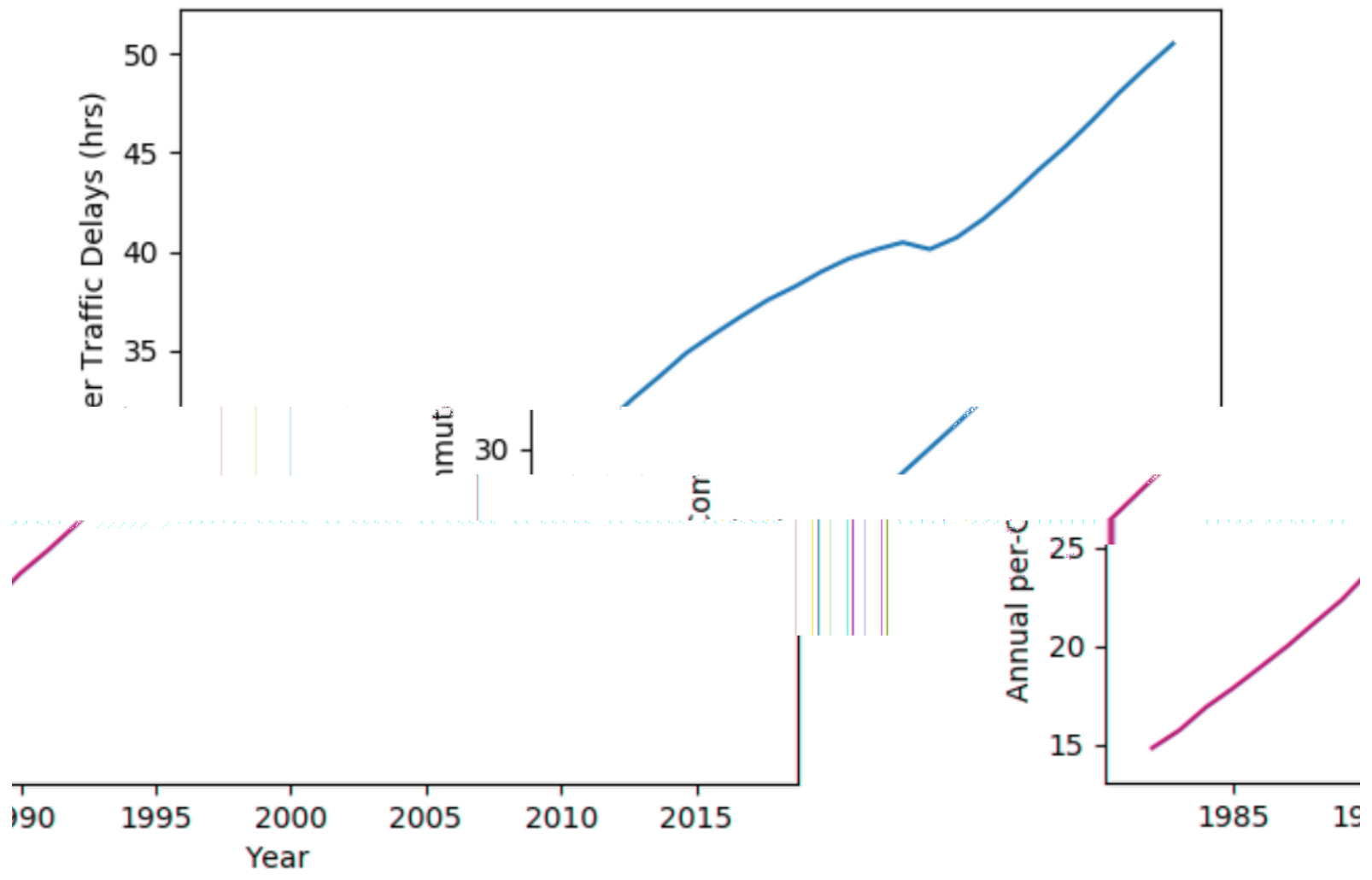


Car crash deaths have surged during COVID-19 pandemic. Here's why

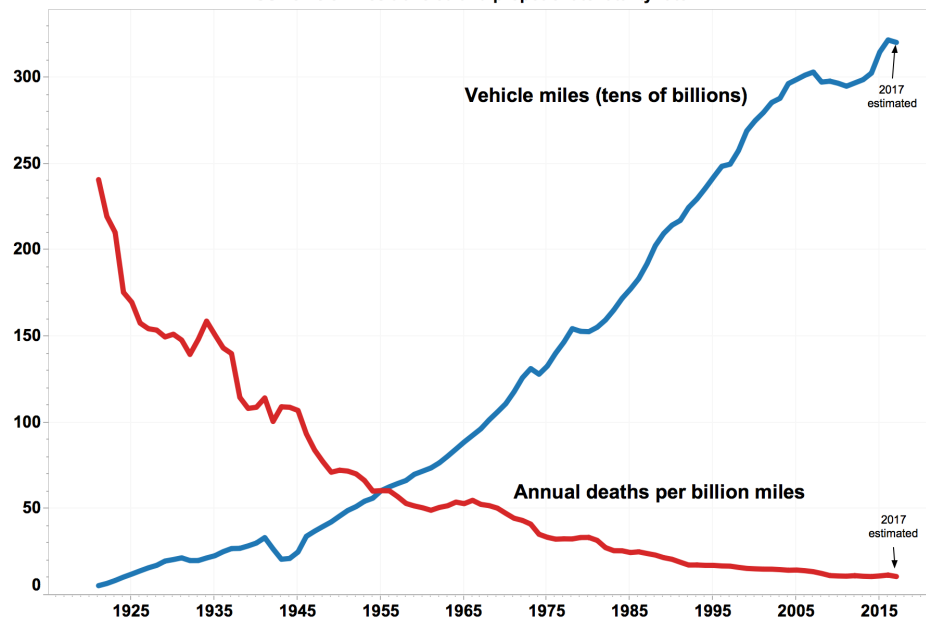
[Reckless driving is] “a sign of the overall lack of consideration we’re showing for other citizens, whether it be wearing masks, or not getting vaccinated, or how we drive.

It’s very aggressive. It’s very selfish.”

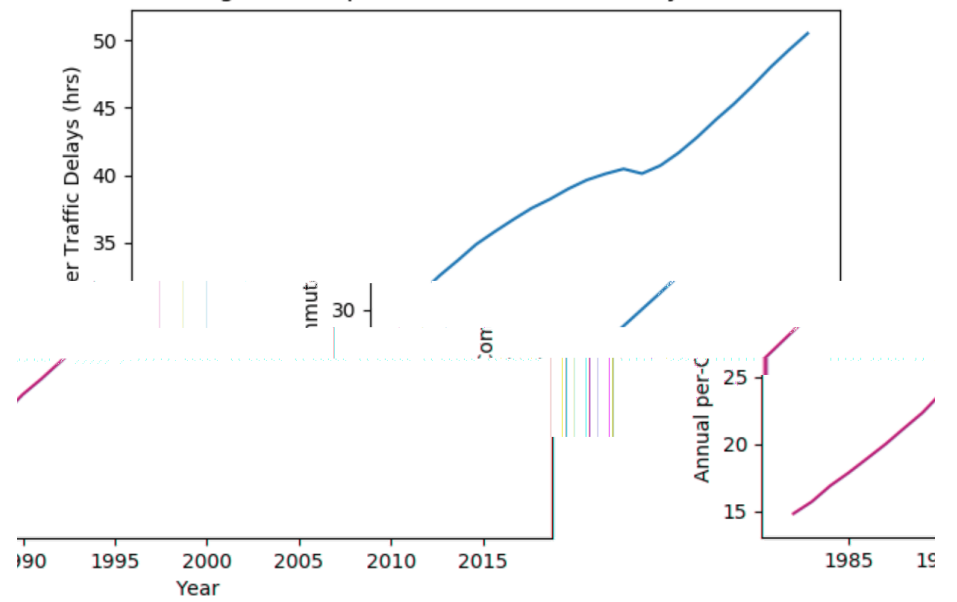
Average Annual per-Commuter Traffic Delays over Time



US vehicle miles traveled and proportionate fatality rate



Average Annual per-Commuter Traffic Delays over Time



FORGIVING DESIGN



FORGIVE

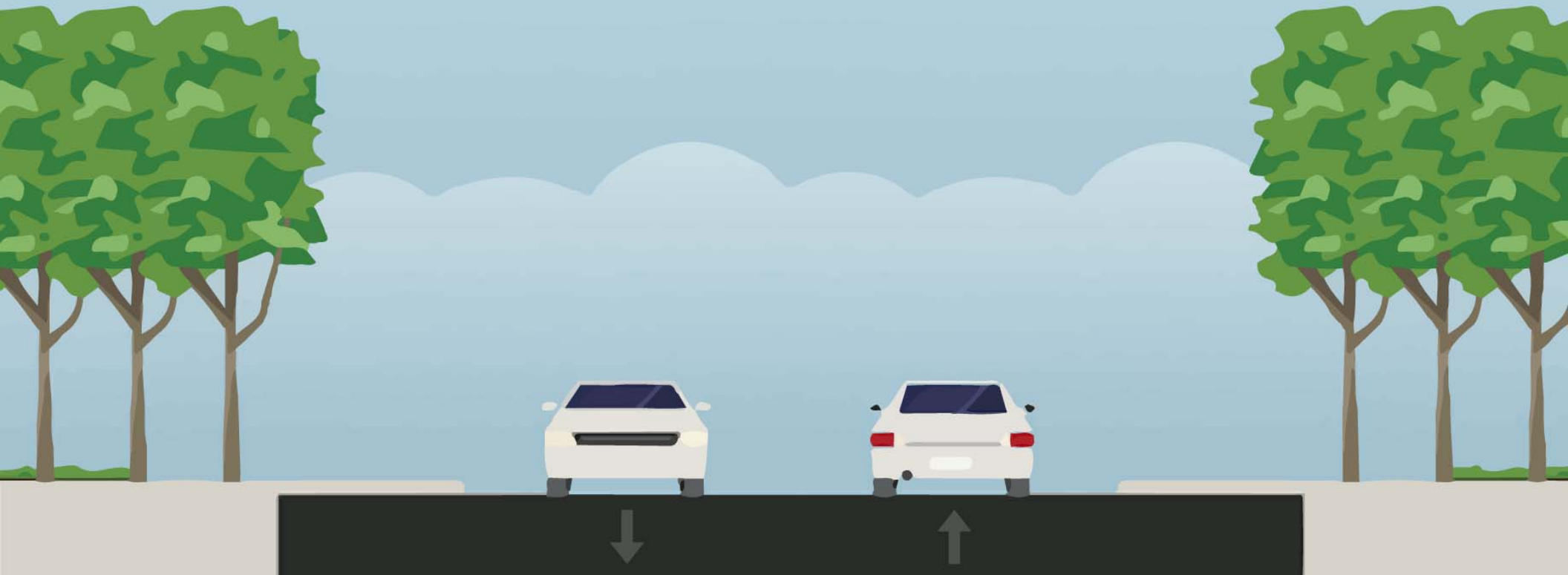
FORGIVING DESIGN



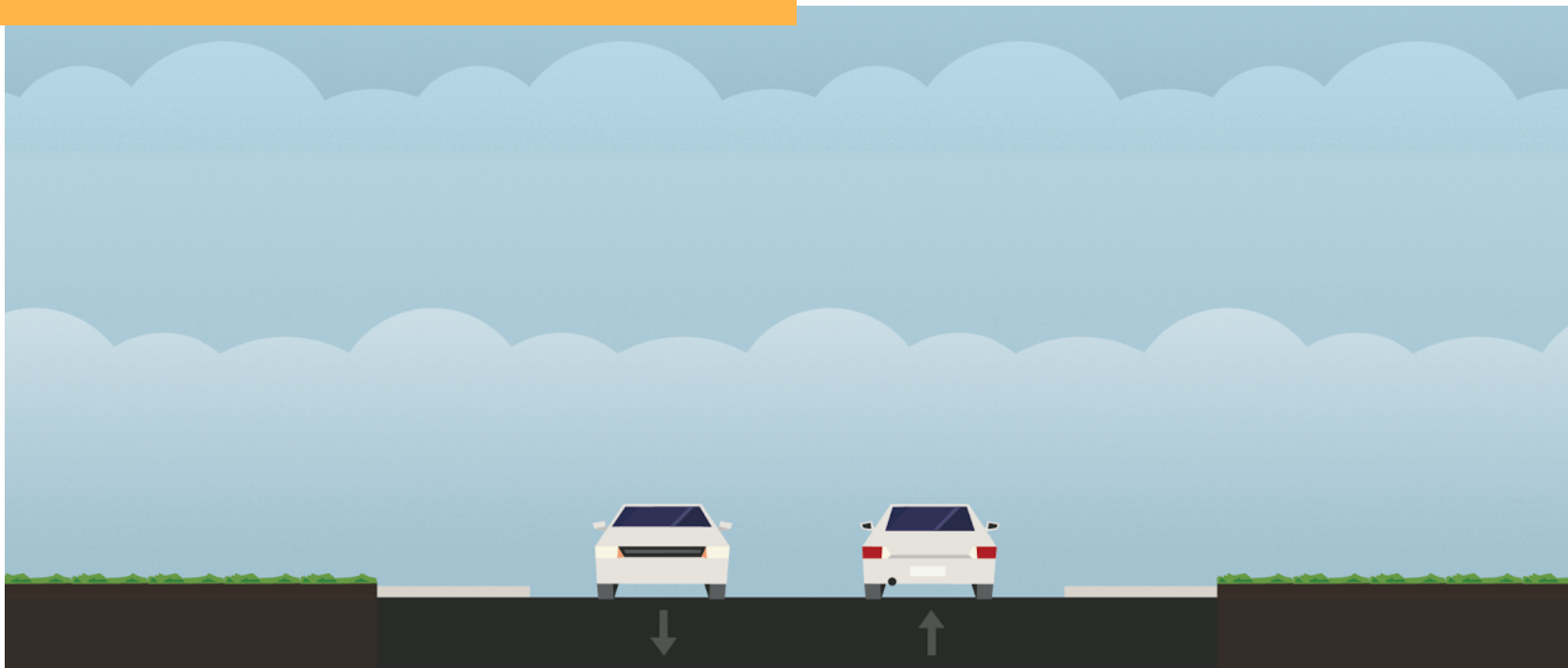
FORGIVING DESIGN



FORGIVING DESIGN



FORGIVING DESIGN



FORGIVING DESIGN

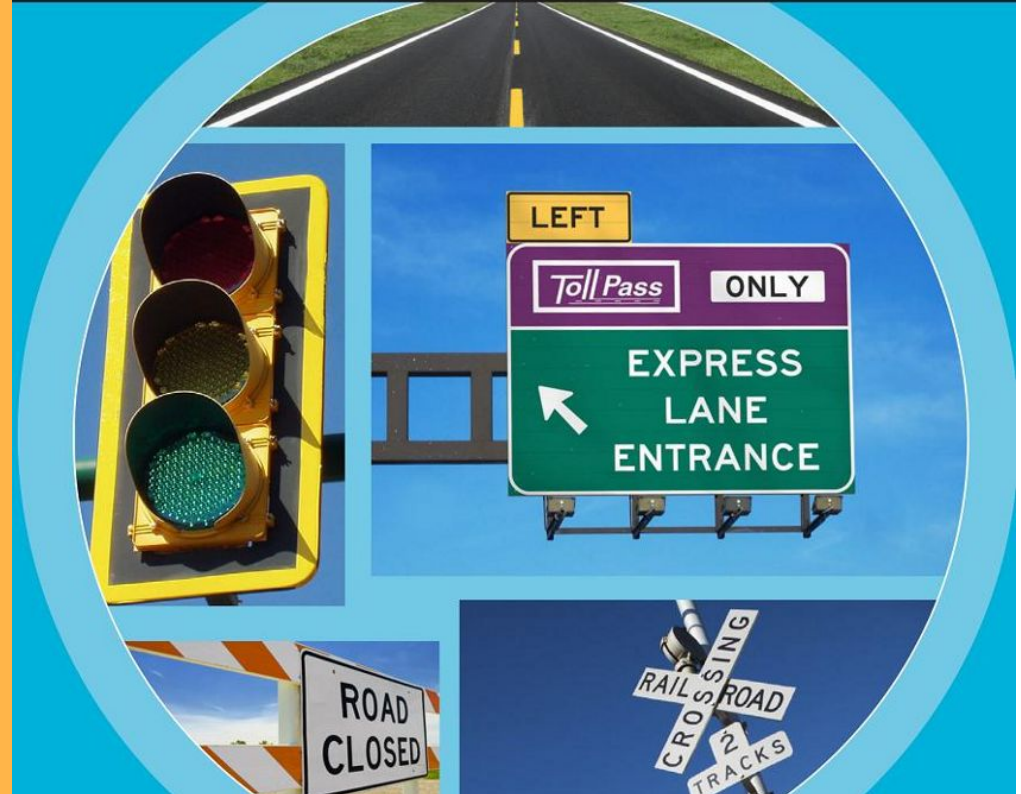


Manual on Uniform Traffic Control Devices

for Streets and Highways

2009 Edition

225. Street –
see Highway



SPEED
LIMIT
25

SHERIFF

45

YOUR SPEED



SYSTEM 1

Intuition & instinct



Unconscious
Fast
Associative
Automatic pilot



SYSTEM 2

Rational thinking



Takes effort
Slow
Logical
Lazy
Indecisive

Uncomfortable Truth

People will tend to drive the speed they feel comfortable driving, regardless of any other factor.

**BE SAFE.
DRIVE SMART.**



**Some
mistakes you
can't take back.**

Stop for pedestrians
at crosswalks.

BE SAFE. DRIVE SMART. 
#EndTheStreakTX



**Pedestrians
don't come
with airbags.**

Yield the right of way
to pedestrians.

BE SAFE. DRIVE SMART. 
#EndTheStreakTX

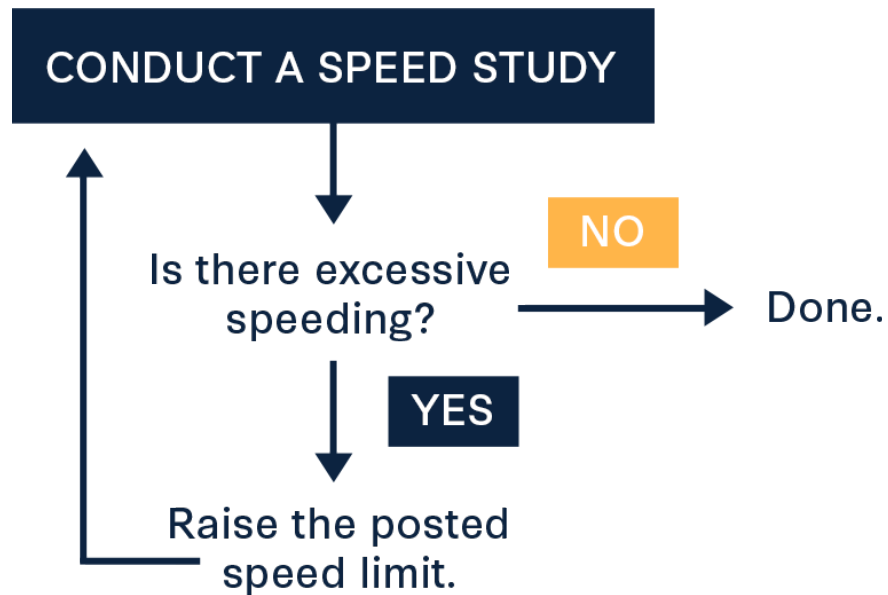


**You can't fix a
pedestrian at
a body shop.**

Slow down and
watch for pedestrians.

BE SAFE. DRIVE SMART. 
#EndTheStreakTX

Standard Engineering Approach



If you need a sign to tell people to slow down...



...you designed your street wrong.



www.strongtowns.org



A BOTTOM-UP REVOLUTION TO REBUILD
AMERICAN PROSPERITY