



Kalamazoo's Transportation Journey

Rebekah Kik, Asst. City Mgr.

City of Kalamazoo

(architect, planner, invisible disability advocate
& avid bike rider)

Dustin Black, Advocate for Local Change

(also happens to work as a transportation
engineer at the Michigan DOT)

Where it all started... architecture school.

- **2013 Come back to Kalamazoo to be with family;** No car for over 6 years.
- **I was away...** working with transportation engineers and planners for 6 years... I drew the pretty pictures.
- **City Planner for Kalamazoo, MI in 2014** – after working as a consultant on a 4-lane to 3 lane road diet project.
- **Desire to reach out to people who did not have transportation choices;** Met an incredible group of change agents.



The picture shows Rebekah on Portage St. in Kalamazoo with walkability guru Dan Burden, a dear colleague who mentored Rebekah early in her career.

Dustin Black

blackd@michigan.gov

@EngineerDustin



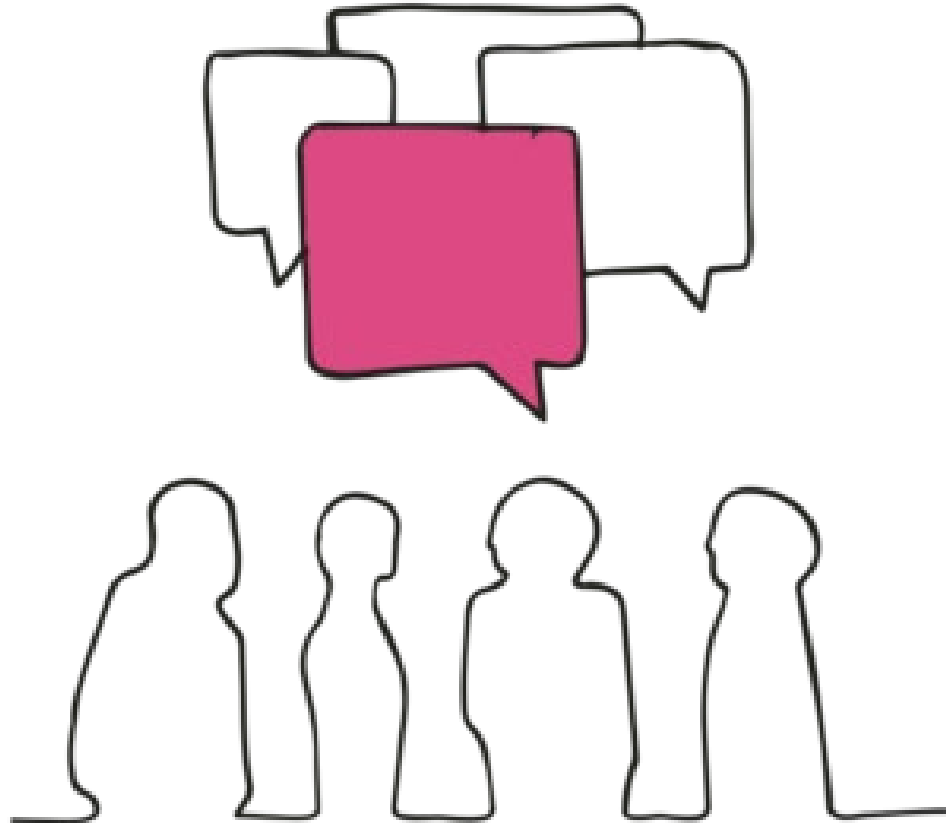
Dustin Black with his electric cargo bike. Dustin is not a 'cyclist' but has rather made the intentional decision to pursue active transportation as a viable outcome of the road design process.





« A small community collective that exists to make walking, biking, and transit the easy choice for everyday transportation. »

A New Vision IK 2025



sign It - each time confirming what was heard and asking for more detail.

Vision Alignment

Focused group discussions confirmed major themes and helped to plan alignment with the Strategic Vision.

Strategic Vision Goals fall into the following categories:

- Shared Prosperity
- Connected City
- Inviting Public Places
- Environmental Responsibility
- Safe Community
- Youth Development
- Complete Neighborhoods
- Strength through Diversity
- Economic Vitality
- Governance

Work is underway to achieve the
IK 2025 vision.

By the Numbers



520 Meeting
on the Go
participants



1056 survey
respondents



163 online
engagements



1056 living and
graffiti wall
comments



1263 meeting
participants

4058 points of contact

Foundation for Excellence

Aspirational Projects

Investing in Kalamazoo's neighborhoods

2017

2018

2019

2020

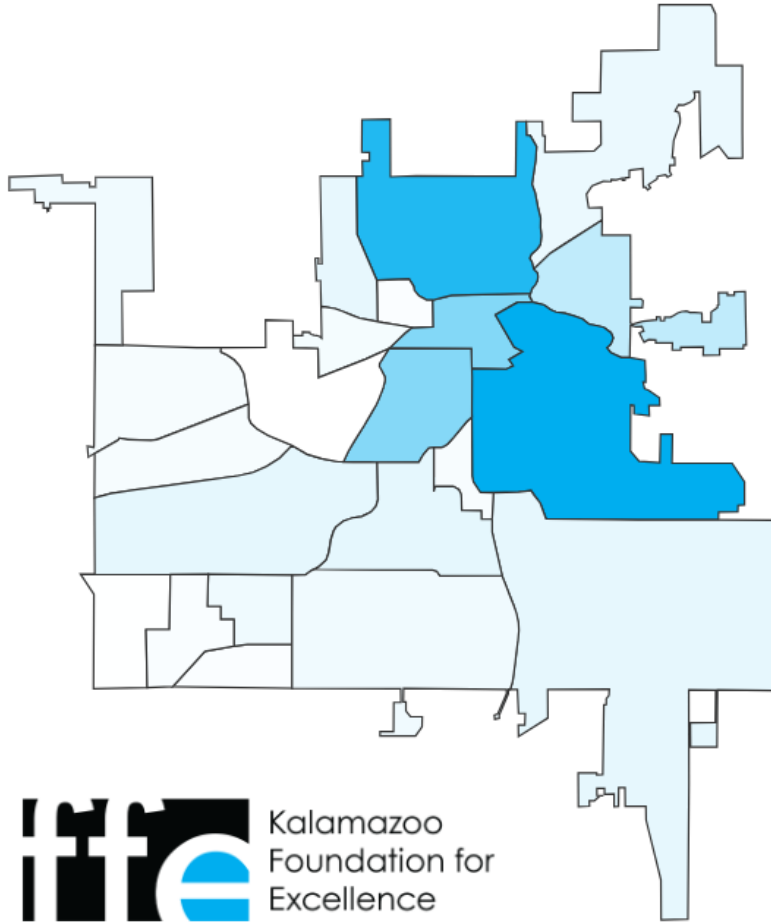
2021

2022

2023

RESET FILTERS

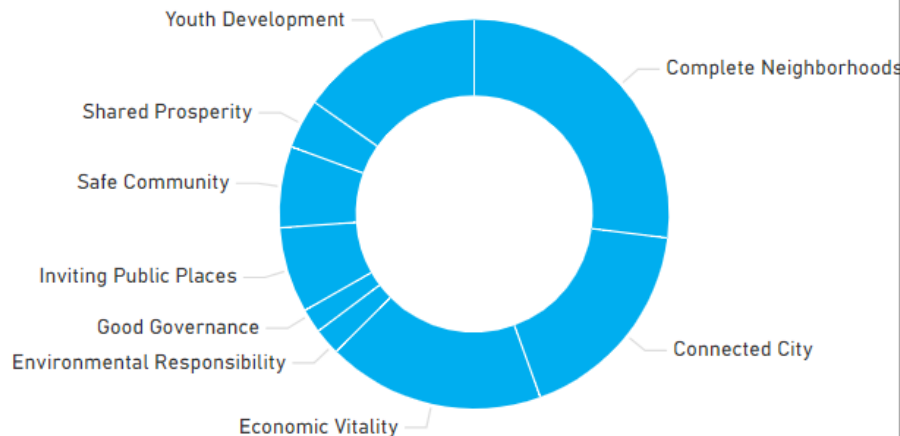
BACK



TOTAL

\$50.27M

Since 2017, the Foundation for Excellence has invested nearly \$24 million in aspirational projects to realize the vision of Imagine Kalamazoo 2025. Click the neighborhood map to see what investments have been made in each neighborhood and how they align with the goals of Imagine Kalamazoo.



Affordable Housing

\$9,353,899

Complete Neighborhoods

\$3,181,331

Economic Development

\$8,245,688

Environmental Responsibility

\$212,003

Good Governance

\$5,200

Infrastructure

\$14,273,135

Inviting Downtown

\$265,000

Neighborhood Activation

\$764,269

Park Enhancements

Plans can come true...

Kalamazoo is ditching most of its one-way streets – back to the way they used to be

Updated: Feb. 14, 2023, 9:16 a.m. | Published: Feb. 14, 2023, 7:30 a.m.

KALAMAZOO

Downtown Kalamazoo street conversion begins with \$1.9M Michikal project

Updated: May. 1, 2023, 10:00 a.m.



Kalamazoo



Preliminary

\$5.9M grant will help transform Kalamazoo's downtown street network

Updated: Aug. 09, 2022, 10:00 a.m.



\$12M grant bolsters Kalamazoo's street redesign as two-way conversion begins

Updated: Jun. 04, 2024, 8:18 a.m. | Published: Jun. 04, 2024, 8:16 a.m.



Advertisement





A pink hexagonal graphic with a white border. Inside the hexagon is a photograph of a bus stop shelter on a sidewalk. To the right of the hexagon, the number "5" is written in large white font, followed by the text "Improved Bus Stops" in white font.



Consistent Annual Investments in infrastructure improvements:

- Sidewalks
- Bike Lanes
- Bus Stops
- Traffic Calming interventions
- Pilot projects to improve bike/pedestrian connections

ACTION

TIMELINE COSTS

Improve the Neighborhood Connectivity

Implement Buffered Bike Lanes Along Westnedge and Park

Install all buffered bike lanes Mid \$\$

Install Bike Lanes on Vine and Lovell

Install 2 buffered bike lanes Short \$

Install a Protected Bike Lane or Shared Use Path on Howard

Install all the best option for safe cycling on Howard Long \$\$

Install Branded Wayfinding Dignage Directing to Downtown, the Farmer's Market, Vine Corners, and Campus. Install Bike route signs on Forest, Merrill, Davis, and Wheaton

Provide technical assistance and right of acquisition Mid \$

Improve Bus Stops to Include Seating, Lighting, Shelters Where Possible, and Signage With Route Information

Support ADA bus stop improvement Mid \$\$

Research Route, Transfer, and Frequency Improvements to the Bus System

Support research and planning Long \$\$

Install Bike Racks in Commercial Areas

Support research and siting and right of acquisition Short \$

Incorporate Bicycle Education into Projects, Do More Bicycle Education for Cyclists and Motorists

Support event Short \$



Imagine Vine

Neighborhood Plan



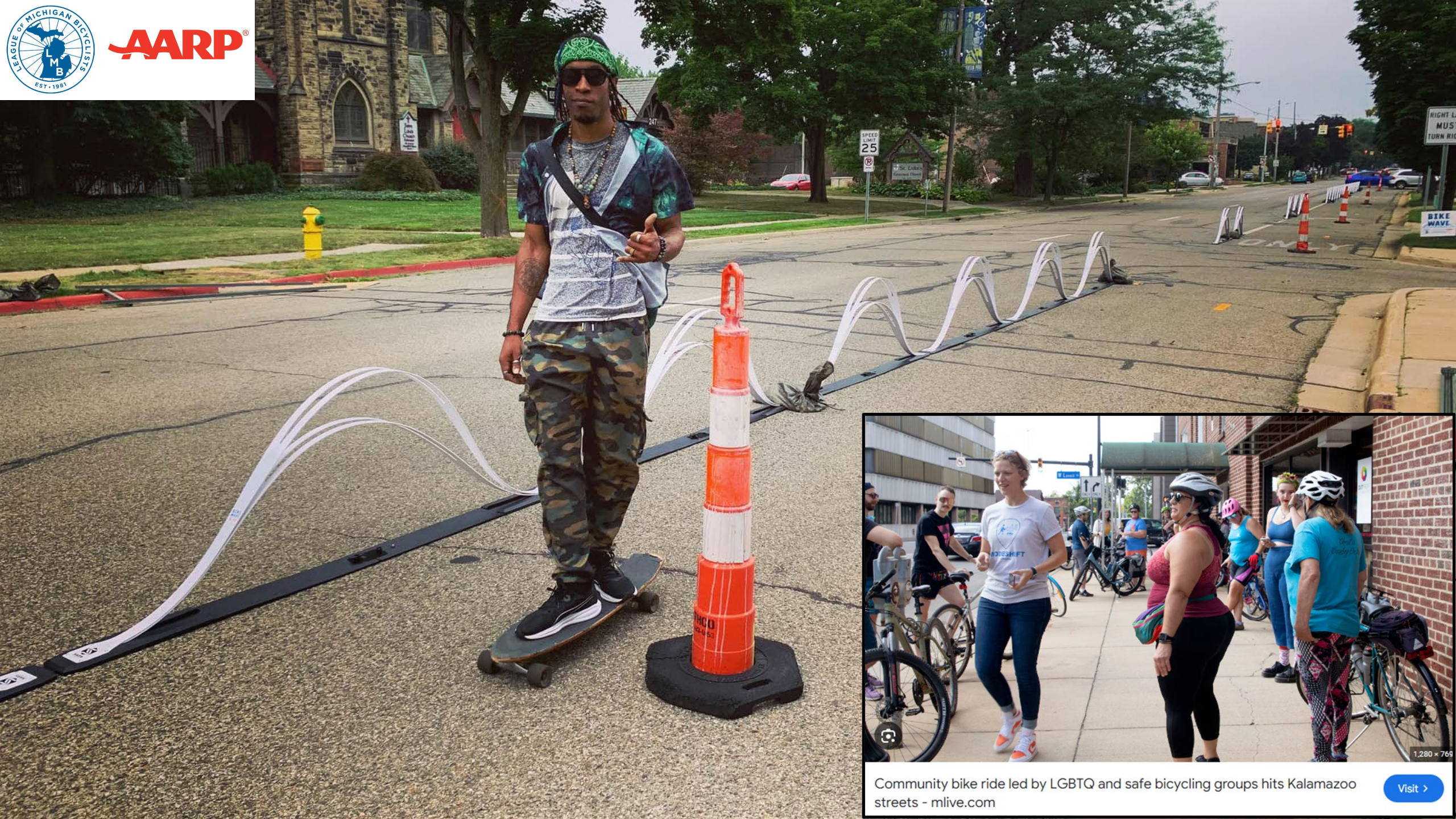
VINE NEIGHBORHOOD ASSOCIATION



THE CITY OF KALAMAZOO



AARP[®]



Community bike ride led by LGBTQ and safe bicycling groups hits Kalamazoo streets - mlive.com

Visit >

This project is supported by the Imagine Vine Neighborhood Plan, which prioritized neighborhood connectivity and specifically called for adding bike facilities on Lovell Street.

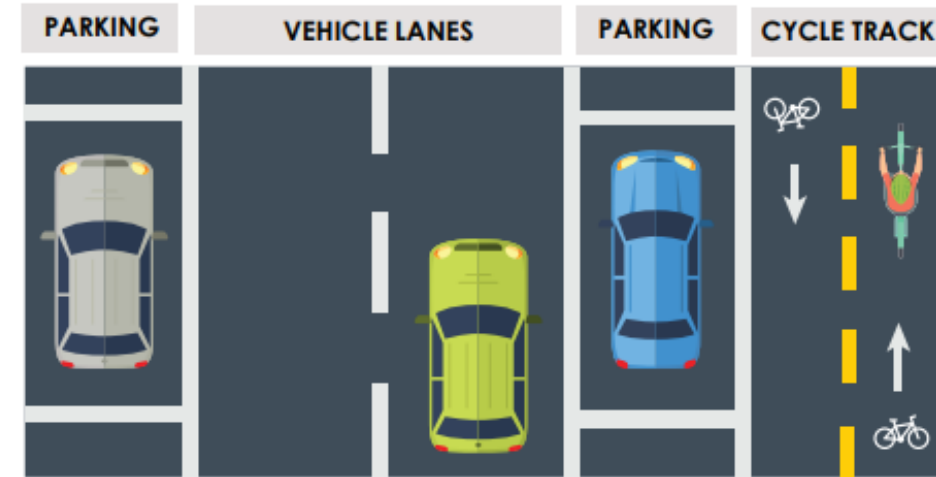
The cycle track will be marked with paint and sections of a Qwick Kurb product consisting of a hard plastic curb with reflective posts. The cycle track will be marked in bright green through intersections.

The Cycle Track will be marked with plastic curb, reflective posts, and paint.

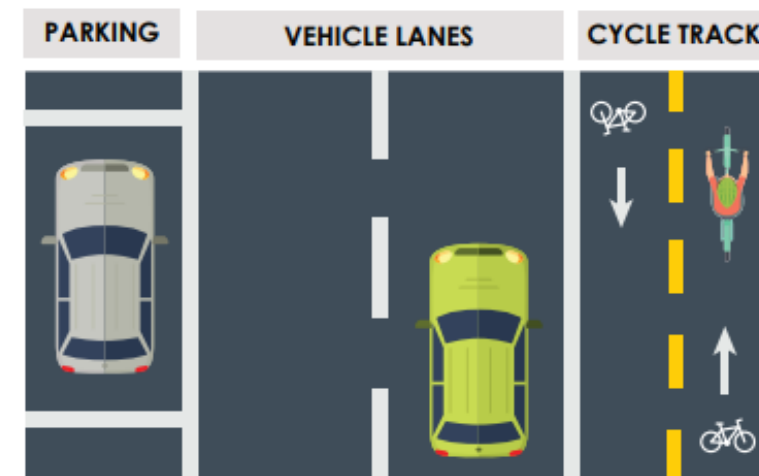


Source: Qwick Kurb

Pitcher St to Westnedge Ave



Westnedge Ave to Oakland Dr



Increasing A Variety Of Housing Types Near The Neighborhood Core



- Senior housing
- Accessible housing partnerships
- Multi-family
 - Smaller and urban centered – 4 to 12 unit
- Single family (attached and detached)
 - Duplex, triplex, row houses

What's Next... into 2035...

Welcoming and Accessible partner engagement projects:

- **Discover Kalamazoo**
 - **Accessible Traveler Grant**
- **Disability Network**
 - **Advisory Staff**
- **Metro Transit**
 - **Accessible Bus Stop Investments**
 - **Over 8 years of investments and improvements**
- **Outfront & NAACP organizations**
 - **Welcoming and belonging in Kalamazoo**