

# Channel Islands National Marine Sanctuary



Photo: Robert Schwemmer, NOAA

The sanctuary contains remarkable biodiversity, productive ecosystems and sensitive species and habitats.



Photo: Robert Schwemmer, NOAA

Historically, the Chumash, a Native American people, traveled to the islands in plank canoes called tomols.

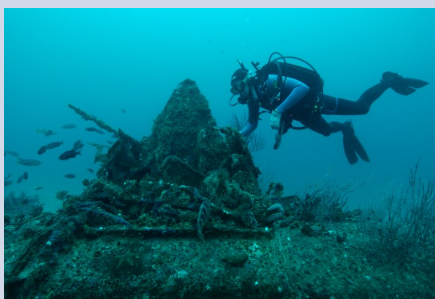


Photo: Robert Schwemmer, NOAA

The sanctuary is home to numerous shipwrecks that hold the secrets of California's maritime past.

## Channel Islands National Marine Sanctuary

(CINMS), located off the coast of Santa Barbara and Ventura counties in California, encompasses 1,470 square miles of water offshore of Anacapa, Santa Barbara, Santa Cruz, San Miguel and Santa Rosa. The sanctuary contains remarkable biodiversity, productive ecosystems, sensitive species and habitats, and shipwrecks and other maritime heritage artifacts. Many valuable commercial and recreational activities, such as fishing, shipping and tourism, occur in the sanctuary. A comprehensive ecosystem-based management approach is used to promote long term conservation of sanctuary waters, wildlife, habitats and cultural resources, while allowing compatible human uses.

## Research and Monitoring

Channel Islands National Marine Sanctuary has tremendous biodiversity. Consequently, the research and monitoring needs in and around the sanctuary are diverse and challenging. Sanctuary staff work in partnership and independently on a broad spectrum of research projects, from exploring the sanctuary's deep sea floor and corals to documenting whale sightings. Partnerships have been developed with other government agencies, and regional and international

academic institutions. These partnerships are facilitated by staff research expertise, as well as operational support provided by the R/V *Shearwater* and R/V *Shark Cat*. Additionally, comprehensive, long term monitoring is a fundamental element of resource management and protection. CINMS monitors ecosystem resources through SIMoN, the Sanctuary Integrated Monitoring Network.

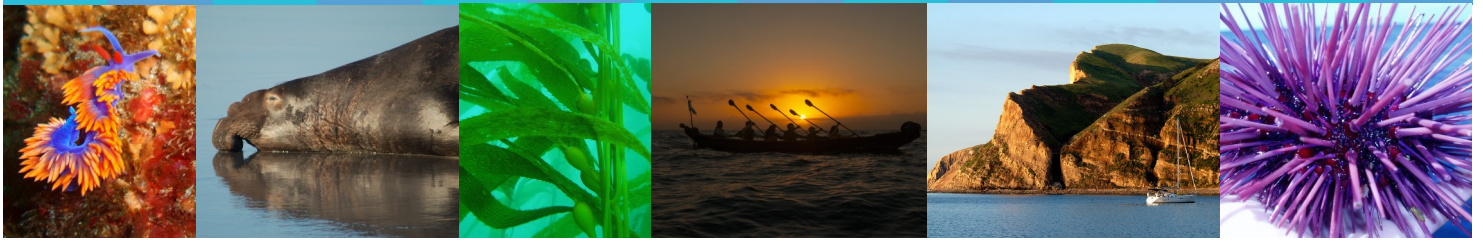
## Education and Outreach

CINMS's education and outreach programs promote understanding, support and participation in the protection and conservation of marine resources. The Channel Islands Naturalist Corps volunteers and represents the sanctuary and Channel Islands National Park on board local whale watch vessels and educational cruises. Our visitor centers and exhibits display, encourage and interpret the importance of the sanctuary and its resources. For instance, the Channel Islands Boating Center provides educational and recreational opportunities for students of California State University and the Channel Islands and Ventura County. In Santa Barbara, people can engage with the sanctuary at the Outdoors Santa Barbara Visitor Center or learn about the sanctuary's shipwrecks at the Santa Barbara Maritime Museum.



Photo: Robert Schwemmer, NOAA

The sanctuary surrounds five of the Channel Islands: Santa Barbara, Santa Cruz, San Miguel, Santa Rosa and Anacapa, pictured here.



# Channel Islands National Marine Sanctuary

## Location

In California, about 23 miles from Santa Barbara and 13 miles from Ventura

## Protected Area

1,470 square miles

## Designation

September 1980

## Habitats

Kelp forests  
Open ocean  
Rocky reefs  
Seagrass meadows  
Shallow sand bottoms

## Key Species

Ashy storm-petrel  
Blue whale  
California brown pelican  
California spiny lobster  
Giant sea bass  
Humpback whale  
Northern elephant seal  
Pink-footed shearwater  
Red abalone  
Xantus's murrelet

## NATIONAL MARINE SANCTUARY SYSTEM



## Find Us

University of California, Santa Barbara  
Ocean Science Education Building 514,  
MC 6155  
Santa Barbara, CA 93106-6155  
805-966-7107

## On the Web

Email: [channelislands@noaa.gov](mailto:channelislands@noaa.gov)  
<https://www.facebook.com/ChannelIslandsNMS>  
 Twitter: @NOAA\_CINMS

## Office of National Marine Sanctuaries

Network of marine protected areas  
Encompasses more than 600,000 square miles  
Established October 1972

## On the Web

[sanctuaries.noaa.gov](http://sanctuaries.noaa.gov)  
[www.facebook.com/NOAAOfficeofNationalMarineSanctuaries](https://www.facebook.com/NOAAOfficeofNationalMarineSanctuaries)  
 Instagram: @noaasanctuaries  
 Twitter: @sanctuaries  
 Tumblr: @noaasanctuaries



Photo: Claire Fackler, NOAA

A kayaker observes a sea lion in Channel Islands National Marine Sanctuary.



Photo: Laura Francis, NOAA

Many species of whales and dolphins visit or call the sanctuary home, like this gray whale.



Photo: Claire Fackler, NOAA

The sanctuary is a great place to view many types of wildlife.

<http://channelislands.noaa.gov/>