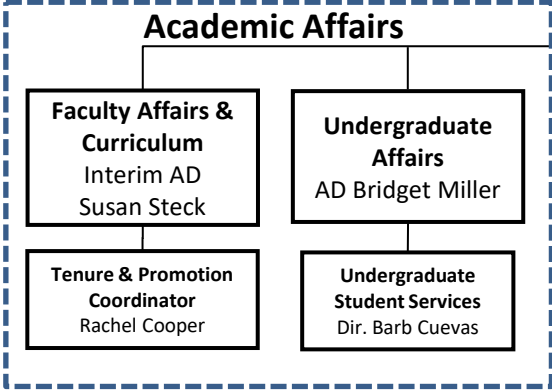


**Norman J. Arnold**  
**School of Public Health**  
**Dean Tara Sabo-Attwood**

**Executive Assistant**  
Patsy Yarborough



**Access and Collective Engagement**  
AD Toni Torres-McGehee

**Research**  
Interim AD  
Daniela Friedman

**Public Health Practice**  
Assistant Dean  
Myriam Torres

**Operations & Accreditation**  
ED Lee Pearson

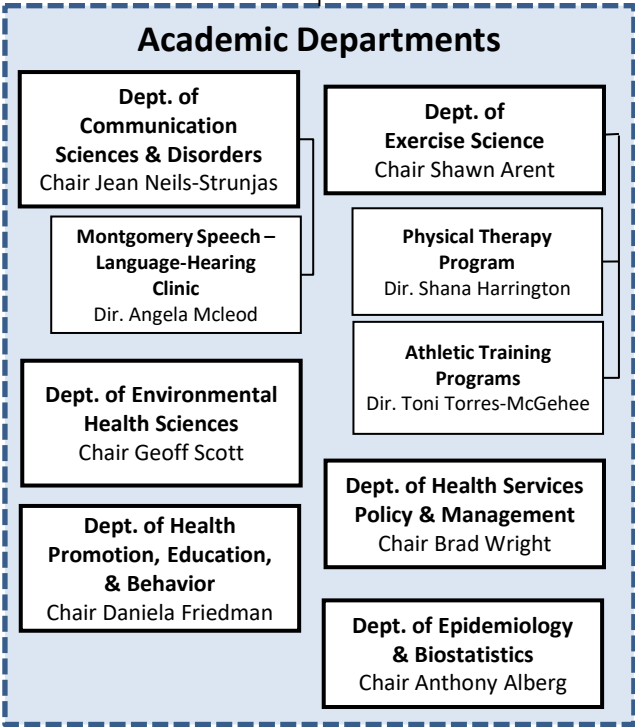
**Office of Research**  
Dir. Charlotte Stalvey

**Applied Practice**  
Dir. Zach Jenkins

**Workforce Development**  
Dir. Mary Jones

**Evaluation & Academic Assessment**  
Dir. Kollette Clark

**Data Analytics**  
Dir. Adam Sokol



**Business & Finance**  
ED Sandy Besley

**Human Resources**  
Dir. April Davis

**Development**  
Vacant

**Population Health - PRISMA Greenville**  
Dir. Caroline Rudisill

**School Centers**

**SmartState Center for Effectiveness Research in Orthopaedics**  
Dir. John Brooks

**SmartState Center for Environmental Contaminants & Risk**  
Dir. (Vacant)

**SmartState Center for Healthcare Quality**  
Dir. Xiaoming Li

**SmartState SeniorSMART SMARTBrain Center**  
Dir. Julius Fridriksson

**SmartState Technology Center to Promote Healthy Lifestyles**  
Dir. Delia West

**Rural Health & Minority Health Research Center**  
Dir. Elizabeth Crouch

**Nutrition Consortium**  
Dir. Christine Blake

**Oceans & Human Health Center on Climate Change Interactions**  
Dir. Geoff Scott

**Prevention Research Center**  
Dir. Sara Wilcox

**Office for the Study of Aging**  
Co-Dir. Megan Byers and Maggi Miller

**Center for the Study of Aphasia Recovery**  
Dir. Julius Fridriksson

**Cancer Prevention and Control Program**  
Dir. James Hébert

**Consortium for Latino Health Studies**  
Dir. Myriam Torres

**Health Disparities and Health Equity Research Consortium**  
Dir. Myriam Torres

**Center for Applied Research & Evaluation**  
Dir. Pam Gillam

**Center for Community Health Alignment**  
ED Julie Smithwick

**Community Health Worker Institute**  
Dir. Andrea Heyward

**PASOs**  
ED Maria Martin