

FECN19 CWIS 151800

THIRTY-DAY ICE OUTLOOK FOR THE GREAT LAKES ISSUED BY ENVIRONMENT CANADA ON 15 DECEMBER 2024 FOR MID-DECEMBER TO MID-JANUARY. THE NEXT SCHEDULED BULLETIN WILL BE ISSUED ON 31 DECEMBER 2024.

Lake Superior

Near normal air temperatures were experienced from mid-November to mid-December over Lake Superior. Temperatures are forecast to be near normal from mid-December to mid-January.

Thunder Bay.

December 15-25:

- Open water except 4-6 tenths new and thin lake ice along parts of the shore.

December 26-31:

- 1-3 new lake ice except 7-8 tenths thin lake ice along parts of the shore.

January 1-15:

- 4-6 tenths new and thin lake ice except 9+ tenths thin lake ice along parts of the shore.

Nipigon and Black Bays.

December 15-22:

- Open water except 9-9+ tenths thin lake ice in northeastern Nipigon Bay and southern Black Bay. Consolidated thin and medium lake ice in northern Black Bay.

December 23-28:

- 4-6 tenths thin lake ice except consolidated thin and medium lake ice in northeastern Nipigon Bay. Consolidated thin and medium lake ice in Black Bay.

December 29-31:

- 7-8 tenths thin lake ice except consolidated medium lake ice in northeastern Nipigon Bay and in Black Bay.

January 1-7:

- 7-8 tenths thin lake ice except consolidated medium lake ice in northeastern Nipigon Bay and in Black Bay.

January 8-15:

- Consolidated medium lake ice except consolidated thick lake ice in northeastern Black Bay.

From Grand Marais Minnesota to the entrance to Nipigon Bay.

December 15-31:

- Open water.

January 1-15:

- Open water except 4-6 tenths new and thin lake ice along parts of the shore.

From Grand Marais to Duluth.

December 15-31:

- Open water

January 1-15:

- Open water.

Southern Lake Superior west of Keweenaw Peninsula.

December 15-23:

- Open water except 1-3 tenths new ice along parts of the shore west of the Apostle islands. 9-9+ tenths new and thin ice in Chequamegon Bay.

December 24-31:

- 7-8 tenths new and thin lake ice along the shore west of the Apostle islands and 1-3 tenths new lake ice from the Apostle islands and eastwards along the shore. 9-9+ tenths thin lake ice in Chequamegon Bay. Consolidated thin lake ice along the shores in Chequamegon Bay.

January 1-15:

- 7-8 tenths thin lake ice along the shore and amongst the Apostle islands. Consolidated thin and medium lake ice in Chequamegon Bay.

Southern Lake Superior east of the Keweenaw Peninsula.

December 15-31:

- Open water except 1-3 tenths new lake ice along the shore.

January 1-9:

- Open water except 7-8 tenths thin lake ice in sheltered bays.

January 10-15:

- Open water except 7-8 tenths thin lake ice in sheltered bays. Consolidated thin lake ice in a few sheltered bays.

Whitefish Bay.

December 15-22:

- Open water except 7-8 tenths new and thin lake ice in sheltered bays.

December 23-31:

- Open water except 7-8 tenths new and thin lake ice along parts of the shore.

January 1-15:

- Open water except 9-9+ tenths new and thin lake ice in Batchawana Bay. 9-9+ tenths thin lake ice along parts of the shore.

From Whitefish Bay northwards to Michipicoten Bay.

December 15-January 15:

- Open water.

From Michipicoten Bay to the entrance to Nipigon Bay.

December 15-January 15:

- Open water.

Elsewhere in Lake Superior.

December 15-January 15:

- Ice free to open water.

Lake Michigan

Near normal air temperatures were experienced from mid-November to mid-December over Lake Michigan. Temperatures are forecast to be near normal from mid-December to mid-January.

Green Bay.

December 15-22:

- Open water except 7-8 tenths new and thin lake ice along the shore in northern Bays de Noc and in the extreme southwestern section.

December 23-26:

- Open water except 7-8 tenths new and thin lake ice in the Bays de Noc and along the shore in the extreme southwestern section.

December 27-31:

- Open water except 9-9+ tenths thin lake ice in the Bays de Noc and in the extreme southern section.

January 1-15:

- Open water except 9-9+ tenths thin lake ice in the extreme northern section and south of Marinette. Consolidated thin lake ice along the shore in the Bays de Noc and in the extreme southern section.

Northeastern Lake Michigan.

December 15-26:

- Open water.

December 27-31:

- Open water except 4-6 tenths new lake ice along parts of the northern shore.

January 1-15:

- Open water except 4-6 tenths new and thin lake ice along parts of the northern shore and near the Straits of Mackinac.

Elsewhere in Lake Michigan.

December 15-31:

- Ice free except open water in the northern section.

January 1-15:

- Open water.

Lake Huron and Georgian Bay

Near normal air temperatures were experienced from mid-November to mid-December over Lake Huron and Georgian Bay. Air temperatures are forecast to be near normal for mid-December to mid-January.

North Channel.

December 15-19:

- Open water except 4-6 tenths new lake ice along parts of the shore. 9-9+ tenths thin lake ice in a few bays in the western section.

December 20-31:

- Open water except 7-8 tenths thin lake ice in the extreme western section. 9-9+ tenths thin lake ice along parts of the shore.

January 1-9:

- Open water except 7-8 tenths thin lake ice in the extreme western section.
Consolidated thin lake ice along parts of the shore.

January 10-15:

- 7-8 tenths thin lake ice except 9-9+ tenths thin lake ice along the shore.
Consolidated thin lake ice in sheltered bays.

St Mary's River.

December 15-23:

- 1-3 tenths new and thin lake ice except 9-9+ tenths thin lake ice along parts of the shore.

December 24-31:

- 4-6 tenths thin lake ice except consolidated thin lake ice along parts of the shore.

January 1-7:

- 7-8 tenths thin lake ice except consolidated thin and medium lake ice along the shore.

January 8-15:

- 9-9+ tenths thin lake ice except consolidated thin and medium lake ice along the shore

South of Manitoulin Island westward to north-western Lake Huron.

December 15-23:

- Open water.

December 24-31:

- Open water except 4-6 tenths new and thin lake ice in sheltered bays.

January 1-15:

- Open water except 1-3 tenths new and thin lake ice along parts of the shore. 4-6 tenths thin lake ice in sheltered bays.

North-western Lake Huron near the Straits of Mackinac.

December 15-22:

- Open water except 7-8 tenths new and thin lake ice in sheltered bays along the northern shore.

December 23-31:

- Open water except 7-8 tenths thin lake ice along parts of the northern shore.

January 1-6:

- Open water except 9-9+ tenths thin lake ice along parts of the northern shore and 1-3 tenths new ice along parts of the southern shore.

January 7-15:

- Open water except 4-6 tenths new and thin lake ice in the northwestern section. 1-3 tenths new and thin lake ice along the southern shore. Consolidated thin lake ice along parts of the northern shore.

From north-western Lake Huron to Saginaw Bay.

December 15-22:

- Open water.

December 23-31:

- Open water except 1-3 tenths new lake ice along parts of the shore.

January 1-15:

- Open water except 4-6 tenths new and thin lake ice along parts of the shore.

Saginaw Bay.

December 15-25:

- 4-6 tenths new and thin lake ice except consolidated thin lake ice along the southeastern shore.

December 26-31:

- 7-8 tenths new and thin lake ice except 9-9+ tenths thin lake ice in the southeastern section. Consolidated thin lake ice along parts of the eastern shore.

January 1-15:

- 9-9+ tenths thin lake ice except consolidated thin lake ice along the southern and eastern shores.

The southern and eastern shore of Lake Huron.

December 15-24:

- Open water.

December 25-January 15:

- Open water except 1-3 tenths thin ice along parts of the eastern shore.

Georgian Bay.

December 15-24:

- Open water except 4-6 tenths new and thin lake ice along parts of the northern and eastern shores.

December 25-31:

- Open water except 7-8 tenths thin lake ice along parts of the northern and eastern shores.

January 1-8:

- Open water except 7-8 tenths thin lake ice along the northern and eastern shores. Consolidated thin lake ice along parts of the northern and eastern shores.

Elsewhere in Lake Huron.

December 15-31:

- Ice free.

January 1-15:

- Open water to ice free.

Lake Erie and Lake St. Clair

Below normal air temperatures were experienced from mid-November to mid-December over Lake Erie and Lake St. Clair. Air temperatures are forecast to be near normal for mid-December to mid-January.

Lake St Clair and the Western Basin.

December 15-31:

- Open water except 4-6 tenths new and thin lake ice along the eastern shore of Lake St Clair and southern and western shore of Lake Erie. 7-8 tenths thin lake ice in Sandusky Bay.

January 1-15:

- Open water except 7-8 tenths new and thin lake ice along the eastern shore of Lake St Clair and southern and western shores of Lake Erie.

The rest of Lake Erie.

December 15-31:

- Open water except 1-3 tenths new lake ice along the eastern shore of Long Point.

January 1-15:

- Open water except 1-3 tenths new lake along parts of the northern shore.

Lake Ontario

Below normal air temperatures were experienced from mid-November to mid-December over Lake Ontario. Air temperatures are forecast to be near normal for mid-December to mid-January.

Northeastern Lake Ontario.

December 15-24:

- Open water except 7-8 tenths new lake ice along parts of the shore.

December 25-31:

- Open water except 9-9+ tenths thin lake ice along parts of the shore.

January 1-15:

- Open water except 9-9+ tenths thin lake ice along parts of the shore.

Bay of Quinte.

December 15-31:

- 7-8 tenths thin lake ice.

January 1-15:

- 9-9+ tenths thin lake ice.

St Lawrence River.

December 15-31:

- Open water except occasional patches of 4-6 tenths new and thin lake ice in isolated bays along shore.

January 1-9:

- 4-6 tenths new and thin lake ice except 9-9+ tenths thin lake ice in sheltered bays along the shore.

January 10-15:

- 7-8 tenths new and thin lake ice except consolidated thin lake ice in sheltered bays.

Elsewhere in Lake Ontario.

December 15-31:

- Open water except 7-8 tenths new and thin lake ice in sheltered bays east of Cobourg.

January 1-15:

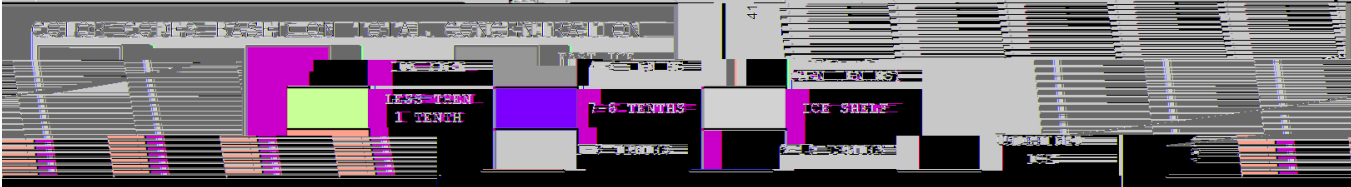
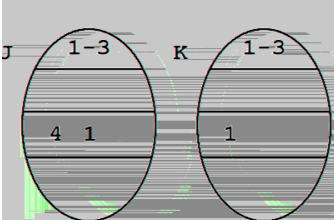
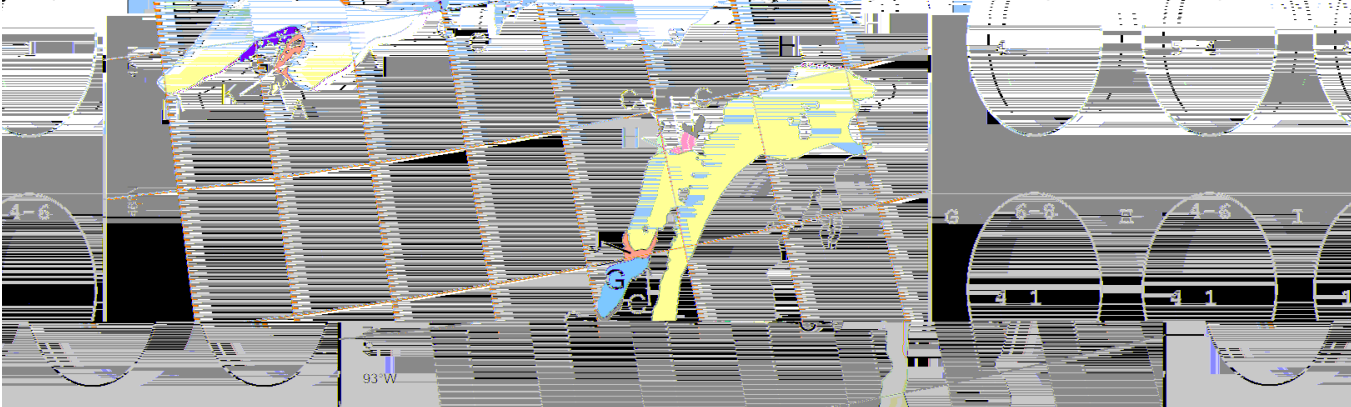
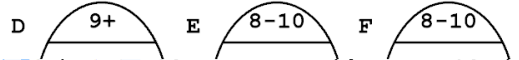
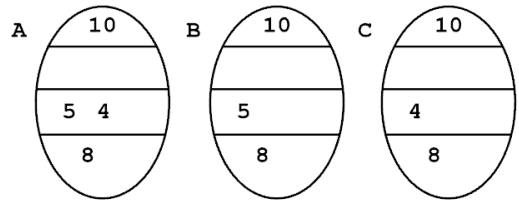
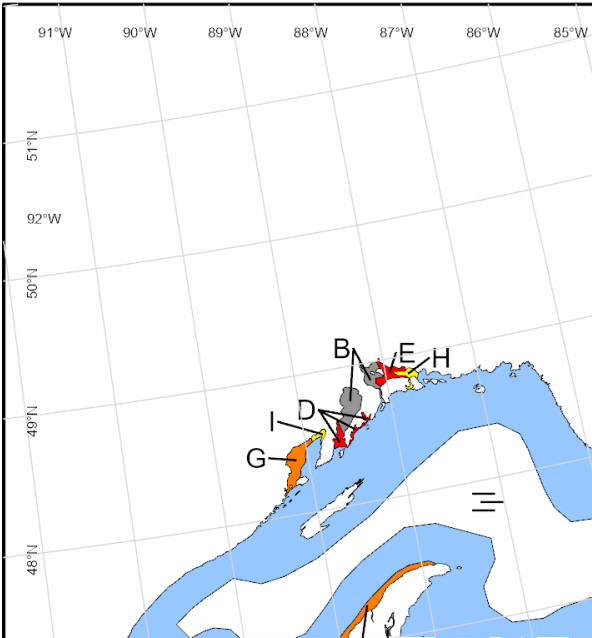
- Open water except 7-8 tenths thin lake ice along parts of the shore east of Cobourg.

END

**ICE FORECAST - 15 DAY
PREVISIONS DES GLACES - 15 JOURS**

**North American Ice Service /
Service des glaces de l'Amerique du Nord**

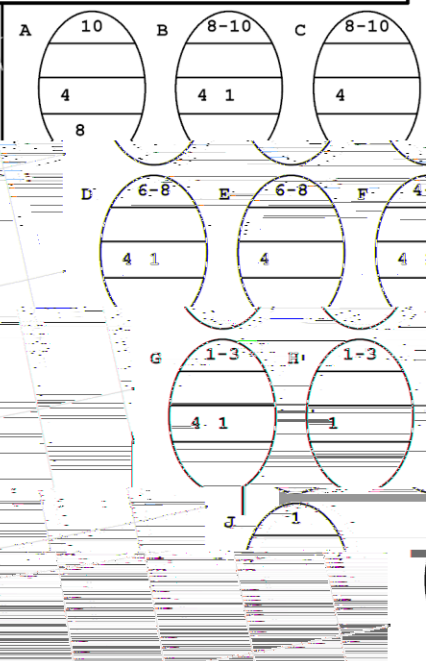
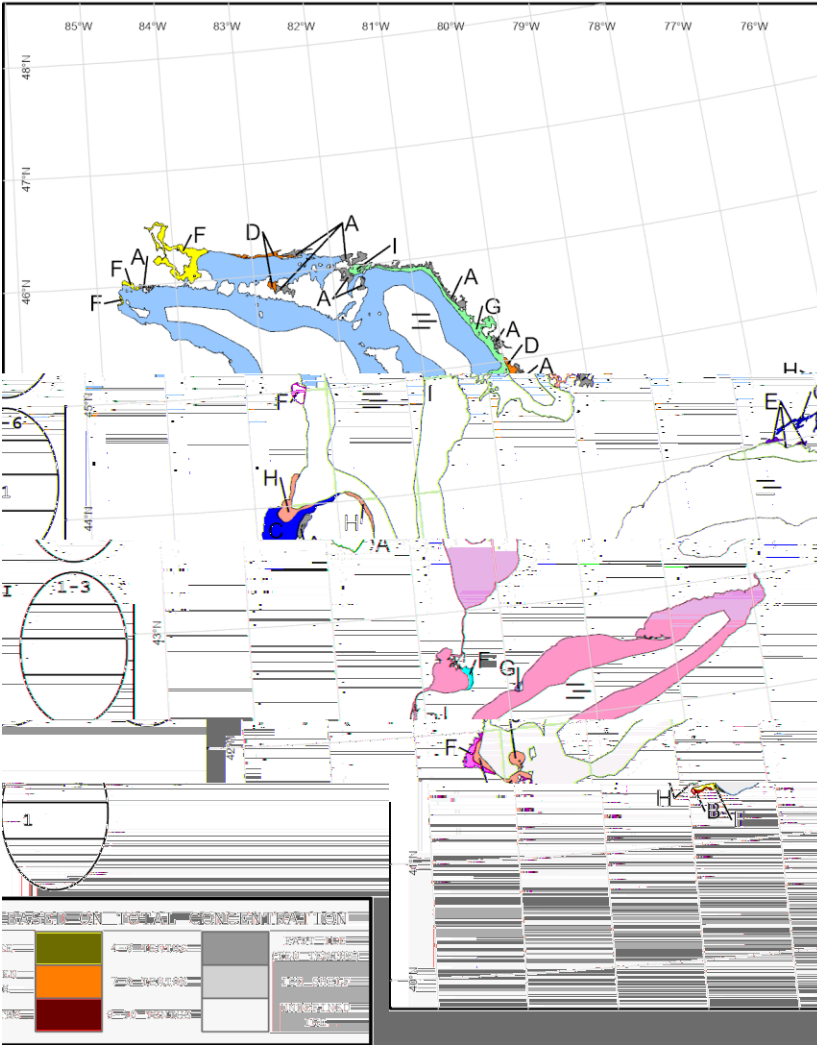
VALID/VALIDE: 01 JAN/JANV. 2025



ICE FORECAST - 15 DAY
PREVISIONS DES GLACES - 15 JOURS

North American Ice Service /
 Service des glaces de l'Amérique du Nord

VALID/VALIDE: 01 JAN/JANV. 2025



ICE FORECAST - 30 DAY

30 JOURS

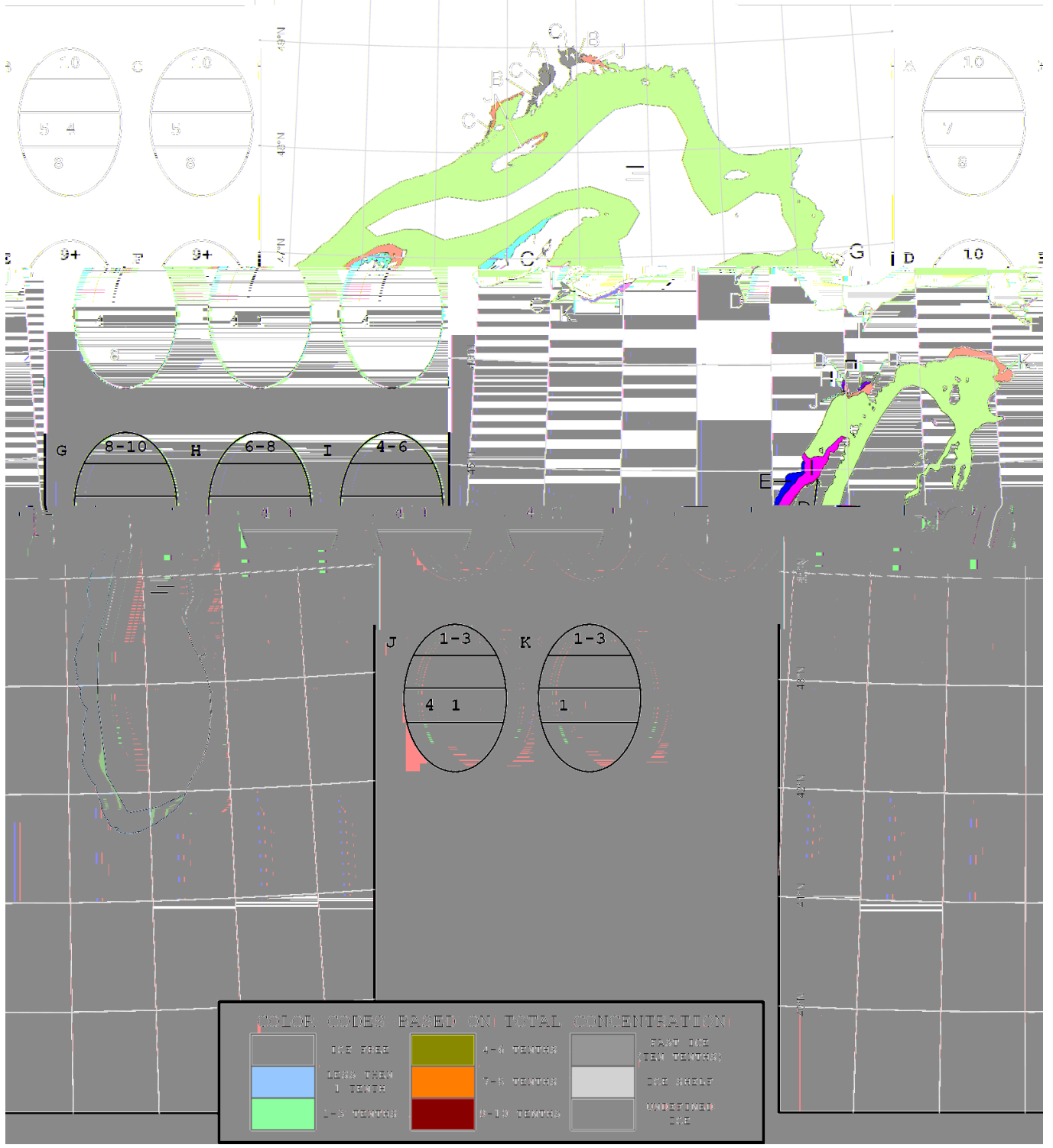
30 TÄG

Service /
Amérique du Nord

North American
Service des glaces de l'

15 JANV. 2025

15 JANUARI 2025



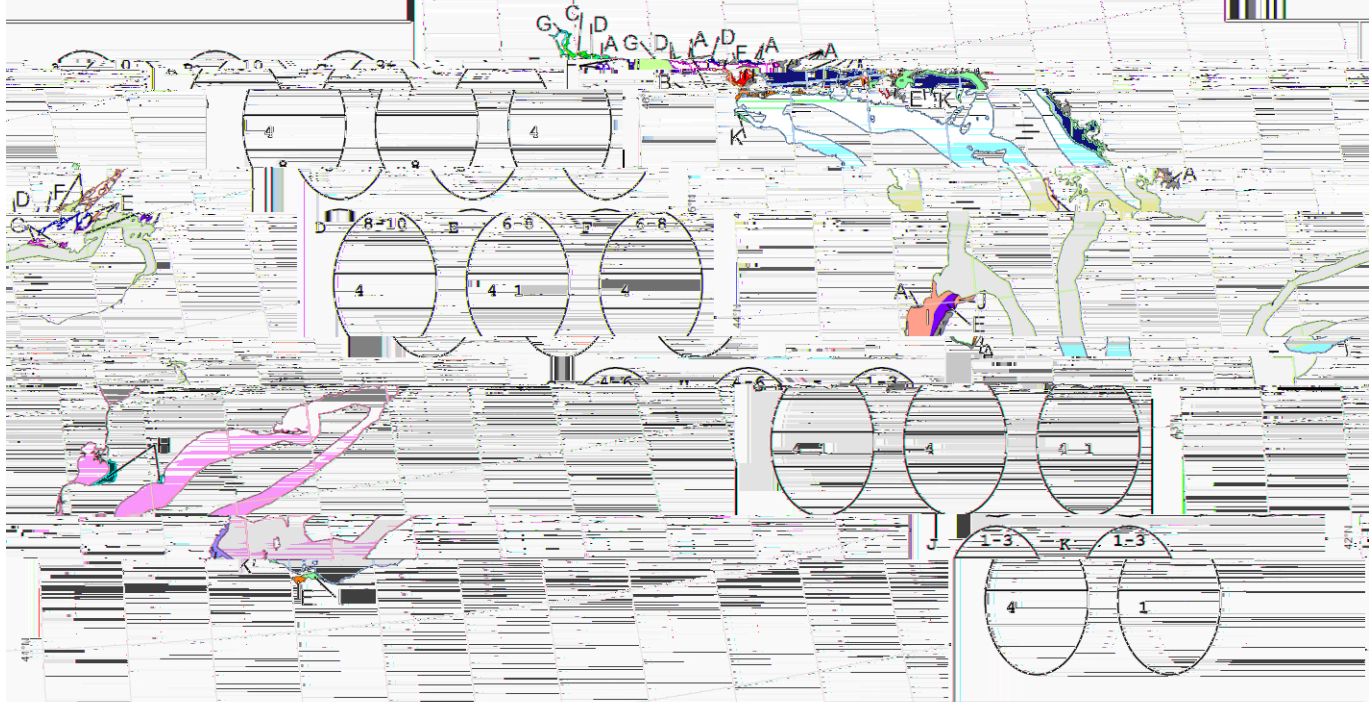
ICF FORECAST - 30 DAY

North American Ice Service
des glaces de l'Amérique du Nord

Service

D/VALIDE: 15 JAN/JANV. 2025

VA



COLOR CODES BASED ON TOTAL CONCENTRATION

Light Blue	0-10%	Yellow	10-20%	Orange	20-30%	Red	30-40%	Grey	40-50%
Light Blue	50-60%	Light Blue	60-70%	Light Blue	70-80%	Light Blue	80-90%	Light Blue	90-100%