

# Seasonal Outlook Great Lakes

Winter 2024-2025



Issued by the North American Ice Service

2<sup>nd</sup> December 2024

## **Lake Superior**

### **Winter temperature and ice forecasts.**

Slightly below normal temperatures are forecast for December. Near to slightly above normal temperatures forecast for January and February. Slightly below normal ice conditions are forecast for Lake Superior.

### **Thunder Bay.**

Outlook for December...

December 1-25: Open water.

December 26-31: Open water except 7-8 tenths thin lake ice along parts of the shore.

Outlook for January...

January 1-14: 4-6 tenths new and thin lake ice except 7-8 tenths thin lake ice along parts of the shore.

January 15-24: 7-8 tenths new and thin lake ice except 7-8 tenths medium lake ice along parts of the shore.

January 25-31: 9-9+ tenths thin lake ice. Consolidated thin and medium lake ice along parts of the shore.

Outlook for February...

February 1-7: 9-9+ tenths thin lake ice. Consolidated medium lake ice in the northwestern section and along parts of the shore.

February 8-17: 9-9+ tenths thin and medium lake ice. Consolidated medium lake ice in the northern section. Consolidated thick lake ice along parts the shore in the northeastern section.

February 18-28: Consolidated medium lake ice except consolidated thick lake ice along the shore in the northeastern section.

### **Nipigon and Black Bays.**

Outlook for December...

December 1-7: Open water except 7-8 tenths new and thin lake ice in the northern section in Black Bay.

December 8-14: Open water except 1-3 tenths new lake ice along the eastern shore in Nipigon Bay. 9-9+ tenths thin lake ice in northern Black Bay except 1-3 tenths medium lake ice along the shores in northern Black Bay.

December 15-21: Open water except 9-9+ tenths thin lake ice in northeastern Nipigon Bay. 9-9+ tenths thin lake ice in Black Bay except 1-3 tenths consolidated medium lake ice along the northern shores in Black Bay.

December 22-27: 4-6 tenths thin lake ice except consolidated thin and medium lake ice in northeastern Nipigon Bay. Consolidated thin and medium lake ice in Black Bay.

December 28-31: 7-8 tenths thin lake ice except consolidated medium lake ice in northeastern Nipigon Bay and in Black Bay.

Outlook for January...

January 1-10: 7-8 tenths thin lake ice except consolidated medium lake ice in northeastern Nipigon Bay and in Black Bay.

January 11-19: Consolidated medium lake ice except consolidated thick lake ice in northeastern Black Bay.

January 20-27: Consolidated medium and thick lake ice except consolidated thick lake ice in Black Bay.

January 27-31: Consolidated thick lake ice.

Outlook for February...

February 1-28: Consolidated thick lake ice.

**From Grand Marais Minnesota to the entrance to Nipigon Bay.**

Outlook for December...

December 1-31: Open water.

Outlook for January...

January 1-17: Open water.

January 18-31: Open water except 1-3 tenths thin lake ice along parts of the shore.

Outlook for February...

February 1-4: Open water except 1-3 tenths thin lake ice along parts of the shore. Consolidated thin lake ice in sheltered bays west of Thunder Bay.

February 5-10: Open water except 4-6 tenths thin lake ice along parts of the shore. Consolidated medium lake ice in sheltered bays west of Thunder Bay. 1-3 tenths new and thin lake ice between the shore and Isle Royal.

February 11-16: 1-3 tenths new and thin lake ice except 7-8 tenths thin lake ice along parts of the shore and between the shore and Isle Royal. Consolidated medium lake ice in sheltered bays west of Thunder Bay.

February 17-22: 7-8 tenths thin and medium lake ice except 7-8 tenths thin and medium lake ice. Consolidated medium lake ice in sheltered bays on Isle Royal and west of Thunder Bay.

February 23-28: 9-9+ tenths thin and medium lake ice except 9-9+ tenths medium lake ice between the shore and Isle Royal. Consolidated medium lake ice in sheltered bays and along the shore east of Black Bay.

**From Grand Marais to Duluth.**

Outlook for December...

December 1-13: Ice free.

December 14-31: Open water.

Outlook for January...

January 1-24: Open water.

January 25-31: 1-3 new lake ice except 7-8 tenths new and thin lake ice near Duluth.

Outlook for February...

February 1-5: 1-3 new lake ice except 9-9+ tenths thin lake ice near Duluth.

February 6-15: 7-8 tenths new and thin lake ice except 9-9+ tenths thin lake ice near Duluth.

February 16-22: 9-9+ tenths thin lake ice except consolidated thin and medium lake ice near Duluth.

February 23-28: 7-8 tenths thin and medium lake ice except consolidated medium lake ice near Duluth.

### **Southern Lake Superior west of Keweenaw Peninsula.**

#### Outlook for December...

December 1-15: Open water except 1-3 tenths new ice in Chequamegon Bay.

December 16-24: Open water except 1-3 tenths new ice along parts of the shore west of the Apostle islands. 9-9+ tenths new and thin ice in Chequamegon Bay.

December 25-31: 7-8 tenths new and thin lake ice along the shore west of the Apostle islands and 1-3 tenths new lake ice from the Apostle islands and eastwards along the shore. 9-9+ tenths thin lake ice in Chequamegon Bay. Consolidated thin lake ice along the shores in Chequamegon Bay.

#### Outlook for January...

January 1-24: 7-8 tenths thin lake ice along the shore and amongst the Apostle islands. Consolidated thin and medium lake ice in Chequamegon Bay.

January 25-31: 9-9+ tenths thin lake ice along the shore and amongst the Apostle islands. Consolidated medium lake ice in Chequamegon Bay.

#### Outlook for February...

February 1-12: 9-9+ tenths thin lake ice along the shore and amongst the Apostle islands. Consolidated thick lake ice in Chequamegon Bay.

February 13-28: 9-9+ tenths thin and medium lake ice along the shore and amongst the Apostle islands. Consolidated thick lake ice in Chequamegon Bay.

### **Southern Lake Superior east of the Keweenaw Peninsula.**

#### Outlook for December...

December 1-12: Ice free except open water near Keweenaw Bay.

December 13-31: Open water except 1-3 tenths new lake ice in sheltered bays.

#### Outlook for January...

January 1-11: Open water except 7-8 tenths thin lake ice in sheltered bays.

January 12-24: Open water except consolidated thin lake ice in sheltered bays.

January 25-31: Open water except 7-8 tenths new and thin lake ice along parts of the shore. Consolidated thin and medium lake ice in sheltered bays.

#### Outlook for February...

February 1-9: Open water except 7-8 tenths thin lake ice along parts of the shore. Consolidated thin and medium lake ice in sheltered bays.

February 10-19: 9-9+ tenths thin lake ice except consolidated medium lake ice in sheltered bays.

February 20-28: 9-9+ tenths thin and medium lake ice except consolidated medium and thick lake ice in sheltered bays.

### **Whitefish Bay.**

#### Outlook for December...

December 1-15: Open water.

December 16-22: Open water except 7-8 tenths new lake ice along parts of the shore.

December 23-31: Open water except 7-8 tenths new and thin lake ice along parts of the shore.

#### Outlook for January...

January 1-16: Open water except 9-9+ tenths new and thin lake ice in Batchawana Bay. 9-9+ tenths thin lake ice along parts of the shore.

January 17-22: 1-3 tenths new lake ice except 9-9+ tenths thin lake ice in Batchawana Bay and along parts of the shores.

January 23-31: 4-6 tenths thin lake ice except 9-9+ tenths thin lake ice along the shores and in Batchawana Bay. Consolidated thin lake ice along the shore in Batchawana Bay.

Outlook for February...

February 1-10: 7-8 tenths thin lake ice except 9-9+ tenths thin and medium lake ice along parts of the shores. Consolidated medium lake ice along the shores in Batchawana Bay and in the southeastern section.

February 11-21: 9-9+ tenths thin and medium lake ice except consolidated medium lake ice along parts of the shore.

February 22-28: 9-9+ tenths medium lake ice except consolidated medium and thick lake ice along parts of the shore.

### **From Whitefish Bay northwards to Michipicoten Bay.**

Outlook for December...

December 1-10: Ice free.

December 11-31: Open water.

Outlook for January...

January 1-25: Open water.

January 26-31: Open water except 1-3 tenths new and thin lake ice along the shore.

Outlook for February...

February 1-9: Open water except 1-3 tenths thin lake ice along the shore.

February 10-16: 1-3 tenths new and thin lake ice except 9-9+ tenths thin lake ice south of Michipicoten Bay.

February 17-22: 9-9+ tenths thin lake ice.

February 13-28: 7-8 tenths thin lake ice except 9-9+ tenths thin and medium lake ice near the shores.

### **From Michipicoten Bay to the entrance to Nipigon Bay.**

Outlook for December...

December 1-31: Open water.

Outlook for January...

January 1-24: Open water.

January 25-31: Open water except 1-3 tenths new lake ice along parts of the shore west of Marathon.

Outlook for February...

February 1-14: Open water except 1-3 tenths new and thin lake ice along the shore west of Marathon.

February 15-28: Open water except 4-6 tenths new and thin lake ice along parts of the shore west of Marathon.

### **Elsewhere in Lake Superior.**

Outlook for December...

December 1-31: Ice free.

Outlook for January...

January 1-31: Ice free to open water.

Outlook for February...

February 1-17: Ice free to open water.

February 18-28: Open water except 7-8 tenths thin and medium lake ice south and west of Isle Royale.

**Lake Michigan.**

**Winter temperature and ice forecasts.**

Below normal temperatures are forecast for December. Near to slightly above normal temperatures forecast for January and February. Slightly below normal ice conditions are forecast for Lake Michigan.

**Green Bay.**

Outlook for December...

December 1-19: Open water except 4-6 tenths new lake ice in the Bays de Noc and along the shore near Green Bay.

December 20-27: Open water except 7-8 tenths new and thin lake ice in the Bays de Noc and along the shore in the extreme southwestern section.

December 28-31: Open water except 9-9+ tenths thin lake ice in the Bays de Noc and in the extreme southern section.

Outlook for January...

January 1-15: Open water except 9-9+ tenths thin lake ice in the extreme northern section and south of Marinette. Consolidated thin lake ice along the shore in the Bays de Noc and in the extreme southern section.

January 16-21: Open water except 7-8 tenths new and thin lake ice in the extreme northern section and south of Chambers Island. Consolidated thin lake ice in the Bays de Noc and along the shore in the extreme southern section.

January 22-27: 4-6 tenths new and thin lake ice except 9-9+ tenths thin lake ice in the extreme northern section and south of Chambers Island. Consolidated thin and medium lake ice in the Bays de Noc and along the shore in the southeastern section.

January 28-31: 7-8 tenths new and thin lake ice except 9-9+ tenths thin lake ice in the northeastern section and south of Chambers Island. Consolidated medium lake ice in the Bays de Noc and along the shore in the southeastern section.

Outlook for February...

February 1-12: 9-9+ tenths thin lake ice except 9-9+ thin and medium lake ice south of Chambers Island. Consolidated medium lake ice in the Bays de Noc and along the shore in the southeastern section.

February 13-18: 9-9+ tenths thin and medium lake ice except 9-9+ medium medium lake ice south and east of Chambers Island. Consolidated medium and thick lake ice in the Bays de Noc and along the shore in the southeastern section.

February 19-23: Consolidated thin and medium lake ice except consolidated medium and thick lake ice in the Bays de Noc and along the shore in the southeastern section.

February 24-28: Consolidated medium lake ice except consolidated thick lake ice in the Bays de Noc and south and east of Chambers Island.

### **Northeastern Lake Michigan.**

#### Outlook for December...

December 1-11: Ice free.

December 12-25: Open water.

December 12-25: Open water except 4-6 tenths new lake ice along parts of the northern shore.

#### Outlook for January...

January 1-20: Open water except 4-6 tenths new lake ice along parts of the northern shore and near the Straits of Mackinac.

January 21-27: Open water except 7-8 tenths thin lake ice along the northern shore and near the Straits of Mackinac.

January 28-31: Open water except 4-6 tenths new and thin lake ice northeast of Beaver Island. 9-9+ tenths thin lake ice along the northern shore and near the Straits of Mackinac.

#### Outlook for February...

February 1-10: Open water except 7-8 tenths thin lake ice northeast of Beaver Island. 9-9+ tenths thin lake ice along the northern shore and near the Straits of Mackinac.

February 11-18: 7-8 tenths new and thin lake ice except 9-9+ tenths thin and medium lake ice north and east of Beaver Island.

February 19-28: 9-9+ tenths thin and medium lake ice except consolidated medium lake ice along parts of the northern shore and near the Straits of Mackinac.

### **Elsewhere in Lake Michigan.**

#### Outlook for December...

December 1-20: Ice free except open water along parts of the shore.

December 21-31: Ice free except open water along the shore.

#### Outlook for January...

January 1-19: Ice free except open water along the shore.

January 20-27: Open water except 7-8 tenths new lake ice along parts of the southern and western shores.

January 28-31: Open water except 7-8 tenths new and thin lake ice along parts of the shores.

#### Outlook for February...

February 1-8: Open water except 7-8 tenths new and thin lake ice along parts of the shore.

February 9-14: Open water except 4-6 tenths new and thin lake ice along parts of the shore. 9-9+ tenths thin lake ice along shore in the southern section.

February 15-21: Open water except 7-8 tenths new and thin lake ice along parts of the shore. 7-8 tenths thin and medium lake ice along the shore in the extreme southeastern section.

February 22-28: Open water except 7-8 tenths new and thin lake ice along parts of the shore. 9-9+ tenths medium lake ice along the shore in the extreme southeastern section.

## **Lake Huron and Georgian Bay.**

### **Winter temperature and ice forecasts.**

Below normal temperatures are forecast over Lake Huron and Georgian Bay this December. Above normal temperatures are forecast for January and February. Slightly below normal ice conditions are forecast.

### **North Channel.**

Outlook for December...

December 1-12: Open water except 1-3 tenths new lake ice in a few bays in the western section.

December 13-20: Open water except 4-6 tenths new lake ice along parts of the shore. 9-9+ tenths thin lake ice in a few bays in the western section.

December 21-31: Open water except 7-8 tenths thin lake ice in the extreme western section. 9-9+ tenths thin lake ice along parts of the shore.

Outlook for January...

January 1-9: Open water except 7-8 tenths thin lake ice in the extreme western section. Consolidated thin lake ice along parts of the shore.

January 10-18: 7-8 tenths thin lake ice except 9-9+ tenths thin lake ice along the shore. Consolidated thin lake ice in sheltered bays.

January 19-26: 7-8 tenths thin lake ice except consolidated medium lake ice along the shore.

January 27-31: 9-9+ tenths thin lake ice except consolidated medium lake ice in the western section and along parts of the shore.

Outlook for February...

February 1-9: 9-9+ tenths thin lake ice except consolidated medium lake ice in the extreme western section and consolidated medium lake ice in the eastern section.

February 10-18: 9-9+ tenths thin and medium lake ice except consolidated medium lake ice in the extreme western section and consolidated medium lake ice in the eastern section and along parts of the shore.

February 19-24: 9-9+ tenths medium lake ice except consolidated medium and thick lake ice in the extreme western section and consolidated medium lake ice in the eastern section and along parts of the shore.

February 25-28: Consolidated medium lake ice except consolidated medium and thick lake ice in the extreme western section.

### **St Mary's River.**

Outlook for December...

December 1-8: Open water except 1-3 new lake ice along parts of the shore.

December 9-18: Open water except 7-8 tenths new lake ice along parts of the shore.

December 19-31: 4-6 tenths new and thin lake ice except consolidated thin lake ice along the shore.

Outlook for January...

January 1-7: 4-6 tenths new and thin lake ice except 9-9+ tenths thin lake ice along the shore.



January 8-25: 9-9+ tenths thin lake ice except consolidated thin and medium lake ice along the shore.

January 26-31: Consolidated medium lake ice.

Outlook for February...

February 1-12: Consolidated medium lake ice.

February 13-28: Consolidated medium and thick lake ice.

### **South of Manitoulin Island westward to North-western Lake Huron.**

Outlook for December...

December 1-9: Ice free.

December 10-20: Open water.

December 21-31: Open water except 4-6 tenths new lake ice in sheltered bays.

Outlook for January...

January 1-22: Open water except 1-3 tenths new and thin lake ice along parts of the shore. 4-6 tenths new and thin lake ice in sheltered bays.

January 23-31: Open water except 1-3 tenths new and thin lake ice along the shore. 9-9+ tenths thin lake ice in sheltered bays.

Outlook for February...

February 1-7: Open water except 1-3 tenths new and thin lake ice along the shore. Consolidated thin lake ice in sheltered bays.

February 8-16: 4-6 tenths new and thin lake ice. Consolidated thin and medium lake ice in sheltered bays.

February 17-28: 4-6 tenths thin and medium lake ice. Consolidated thin and medium lake ice in sheltered bays.

### **North-western Lake Huron near the Straits of Mackinac.**

Outlook for December...

December 1-5: Ice free.

December 6-20: Open water except 1-3 tenths new lake ice in bays along the northern shore.

December 21-31: Open water except 4-6 tenths thin lake ice along parts of the northern shore.

Outlook for January...

January 1-8: Open water except 9-9+ tenths thin lake ice along parts of the northern shore and 1-3 tenths new ice along parts of the southern shore.

January 9-21: Open water except 4-6 tenths new and thin lake ice in the northwestern section. 1-3 tenths new and thin lake ice along the southern shore.

Consolidated thin lake ice along parts of the northern shore.

January 22-31: 7-8 tenths new and thin lake ice except consolidated thin lake ice along parts of the north shore.

Outlook for February...

February 1-6: 7-8 tenths thin lake ice. Consolidated thin and medium lake ice along parts of the north shore.

February 7-13: 7-8 tenths thin lake ice except 9-9+ tenths thin and medium lake ice near the Straits of Mackinac. Consolidated medium lake ice along parts of the north shore.

February 14-18: 9-9+ tenths thin and medium lake ice except consolidated medium lake ice along the northern shore.

February 19-28: 7-8 tenths medium lake ice except consolidated medium lake ice along the northern shore and in the western section.

### **From north-western Lake Huron to Saginaw Bay.**

Outlook for December...

December 1-12: Ice free.

December 13-23: Open water

December 23-31: Open water except 1-3 tenths new lake ice along parts of the shore.

Outlook for January...

January 1-19: Open water except 4-6 tenths new and thin lake ice along parts of the shore.

January 20-31: Open water except 7-8 tenths new and thin lake ice along the shore.

Outlook for February...

February 1-12: Open water except 7-8 tenths thin lake ice along the shore.

February 13-20: Open water except 7-8 tenths thin lake ice along the shore. 9-9+ tenths thin and medium lake ice in sheltered bays.

February 21-28: Open water except 7-8 tenths thin and medium lake ice along the shore. 9-9+ tenths thin and medium lake ice along parts of the shore.

### **Saginaw Bay.**

Outlook for December...

December 1-10: Ice free.

December 11-18: Open water except 1-3 tenths new lake ice along parts of the shore.

December 19-25: Open water except 4-6 tenths new and thin lake ice in along the shore.

December 26-31: 7-8 tenths new and thin lake ice except 9-9+ tenths thin lake ice along the shore in the eastern section.

Outlook for January...

January 1-18: 7-8 tenths new and thin lake ice except consolidated thin lake ice along the shore in the eastern and southern section.

January 19-31: 9-9+ tenths thin lake ice except consolidated thin lake ice along the southern and eastern shore.

Outlook for February...

February 1-15: 9-9+ tenths thin lake ice except 9-9+ tenths thin and medium lake ice in the southern section. Consolidated thin and medium lake ice along the shore in the southern section.

February 16-28: 9-9+ tenths thin and medium lake ice except consolidated medium lake ice in the southern section.

### **The southern and eastern shore of Lake Huron.**

Outlook for December...

December 1-14: Ice free.

December 15-23: Open water.

December 24-31: Open water except 1-3 tenths thin ice along parts of the eastern shore.

Outlook for January...

January 1-14: Open water except 1-3 tenths thin ice along parts of the eastern shore.

January 15-31: 4-6 tenths new lake ice except 9-9+ tenths thin lake ice along the Bruce Peninsula.

Outlook for February...

February 1-9: 7-8 tenths new and thin lake ice except 9-9+ tenths thin lake ice along the Bruce Peninsula. Consolidated thin lake ice in sheltered bays along the Bruce Peninsula.

February 10-16: 9-9+ tenths thin lake ice. Consolidated medium lake ice along the Bruce Peninsula.

February 17-22: 9-9+ tenths thin and medium lake ice. Consolidated medium lake ice along the Bruce Peninsula.

February 23-28: 9-9+ tenths thin and medium lake ice. Consolidated medium lake ice along the Bruce Peninsula and along the southern shore.

**Georgian Bay.**

Outlook for December...

December 1-10: Ice free except open water along the northern and eastern shores.

December 11-17: Open water except 1-3 tenths new lake ice along the northern shore.

December 18-23: Open water except 4-6 tenths new and thin lake ice along the northern and eastern shores.

December 24-31: Open water except 9-9+ tenths thin lake ice along parts of the northern and eastern shores.

Outlook for January...

January 1-23: Open water except 7-8 tenths thin lake ice along the northern and eastern shores. Consolidated thin lake ice along parts of the northern and eastern shores.

January 24-31: Open water except 9-9+ tenths thin lake ice along the northern and eastern shores. 7-8 tenths new and thin lake ice in the northeastern section. Consolidated medium lake ice along parts of the northern and eastern shores.

Outlook for February...

February 1-13: Open water except 9-9+ tenths new and thin lake ice in the northeastern section. 4-6 tenths new and thin lake ice in the southeastern section. Consolidated medium lake ice along parts of the northern and eastern shores.

February 14-20: Open water except 9-9+ tenths thin lake ice in the northern and eastern sections. Consolidated medium lake ice along the northern and eastern shores. Consolidated thick lake ice along the shore near Midland.

February 21-28: 1-3 tenths new lake ice except 9-9+ tenths thin and medium lake ice in the northern section. 4-6 tenths thin lake ice in the southeastern section.

Consolidated medium lake ice along the northern and eastern shores.

Consolidated thick lake ice along the shore near Midland.

### **Elsewhere in Lake Huron.**

Outlook for December...

December 1-31: Ice free.

Outlook for January...

January 1-17: Ice free.

January 18-31: Open water except ice free in central Lake Huron.

Outlook for February...

February 1-28: Open water except ice free in central Lake Huron.

### **Lake Erie and Lake St. Clair**

#### **Winter temperature and ice forecasts.**

Below normal temperatures are forecast over Lake Erie this December. Slightly above normal temperatures are forecast for January and February. Slightly below normal ice conditions are forecast.

#### **Lake St Clair and the Western Basin.**

Outlook for December...

December 1-12: Ice free.

December 13-22: Open water.

December 23-31: Open water except 4-6 tenths new lake ice along the eastern shore of Lake St Clair and southern and western shore of Lake Erie. 7-8 tenths new and thin lake ice in Sandusky Bay.

Outlook for January...

January 1-15: Open water except 4-6 tenths new lake ice along the eastern shore of Lake St Clair and southern and western shore of Lake Erie. 7-8 tenths thin lake ice in Sandusky Bay.

January 16-21: Open water except 4-6 tenths new and thin lake ice along parts of the shore. 7-8 tenths new and thin lake ice in Lake St. Clair and Sandusky Bay.

January 22-27: 4-6 tenths new and thin lake ice except 9-9+ tenths thin lake ice in southwestern Lake Erie.

January 28-31: 7-8 tenths new and thin lake ice except 9-9+ tenths thin lake ice in southwestern Lake Erie along the eastern and southern shores of Lake St Clair.

Outlook for February...

February 1-6: 9-9+ tenths thin lake ice. Consolidated thin lake ice along the shore in eastern Lake Erie and southern Lake St Clair.

February 7-13: 9-9+ tenths thin lake ice except 9-9+ thin and medium lake ice in Lake St Clair. Consolidated thin lake ice along the shore in eastern Lake Erie and consolidated thin and medium lake ice in southern Lake St Clair

February 14-21: 9-9+ tenths medium lake ice. Consolidated medium lake ice along the shore in western Lake Erie, in Sandusky Bay and southern Lake St. Clair.

February 22-28: 9-9+ tenths medium lake ice except consolidated medium lake ice in southwestern Lake Erie and in Lake St. Clair.

### **The rest of Lake Erie.**

#### Outlook for December...

December 1-14: Ice free.

December 15-31: Open water except 1-3 tenths new lake ice along the eastern shore of Long Point.

#### Outlook for January...

January 1-20: Open water except 1-3 tenths new lake along parts of the northern shore.

January 21-31: Open water except 4-6 tenths thin lake ice near the western basin and along the eastern shore of Long Point. 1-3 tenths thin ice along parts of the shores.

#### Outlook for February...

February 1-28: Open water except 7-8 tenths thin lake ice near the western basin. 4-6 tenths new and thin lake ice along parts of the shore. 9-9+ tenths thin lake ice along the eastern shore of Long Point.

## **Lake Ontario.**

### **Winter temperature and ice forecasts.**

Below normal temperatures are forecast over Lake Ontario this December. Slightly above normal temperatures are forecast for January and February. Near normal ice conditions are forecast.

### **Northeastern Lake Ontario.**

#### Outlook for December...

December 1-9: Ice free.

December 10-16: Open water except 4-6 tenths new lake ice in sheltered bays.

December 17-24: Open water except 7-8 tenths new lake ice along parts of the shore.

December 25-31: Open water except 9-9+ tenths thin lake ice along parts of the shore.

#### Outlook for January...

January 1-9: Open water except 9-9+ tenths thin lake ice along parts of the shore.

January 10-22: Open water except 4-6 new lake ice east of Kingston. 9-9+ thin lake ice along parts of the shore.

January 23-31: 1-3 tenths new lake ice except 7-8 new and thin lake ice east of Kingston. 9-9+ thin lake ice along parts of the shore.

#### Outlook for February...

February 1-9: 1-3 tenths new lake ice except 7-8 thin lake ice east of Kingston. Consolidated thin and medium lake ice along parts of the shore.

February 10-18: 4-6 tenths new and thin lake ice except 7-8 tenths thin lake ice in the extreme northeastern section. Consolidated thin and medium lake ice along parts of the shore except consolidated medium lake ice along the shore from near Kingston and eastwards.

February 19-28: 7-8 tenths thin and medium lake ice except 9-9+ tenths thin and medium lake ice in the extreme northeastern section. Consolidated medium lake ice along the northern shore and along parts of the eastern shore.

### **Bay of Quinte.**

Outlook for December...

December 1-5: Ice free.

December 6-12: Open water except 1-3 tenths new lake ice along parts of the shore.

December 13-21: 7-8 tenths new lake ice.

December 22-31: 7-8 tenths thin lake ice.

Outlook for January...

January 1-24: 9-9+ tenths thin lake ice.

January 25-31: Consolidated thin lake ice.

Outlook for February...

February 1-6: Consolidated thin and medium lake ice.

February 7-24: Consolidated medium lake ice.

February 7-24: Consolidated medium and thick lake ice.

### **Elsewhere in Lake Ontario.**

Outlook for December...

December 1-10: Ice free.

December 11-20: Ice free except 7-8 tenths new lake ice along parts of the shore east of Cobourg.

December 21-31: Ice free except 7-8 tenths thin lake ice along parts of the shore east of Cobourg.

Outlook for January...

January 1-19: Ice free except open water along the shore. 7-8 tenths thin lake ice along parts of the shore east of Cobourg.

January 20-31: Ice free except open water along the shore. 4-6 tenths thin lake ice along the shore east of Cobourg and along parts of the southern shore.

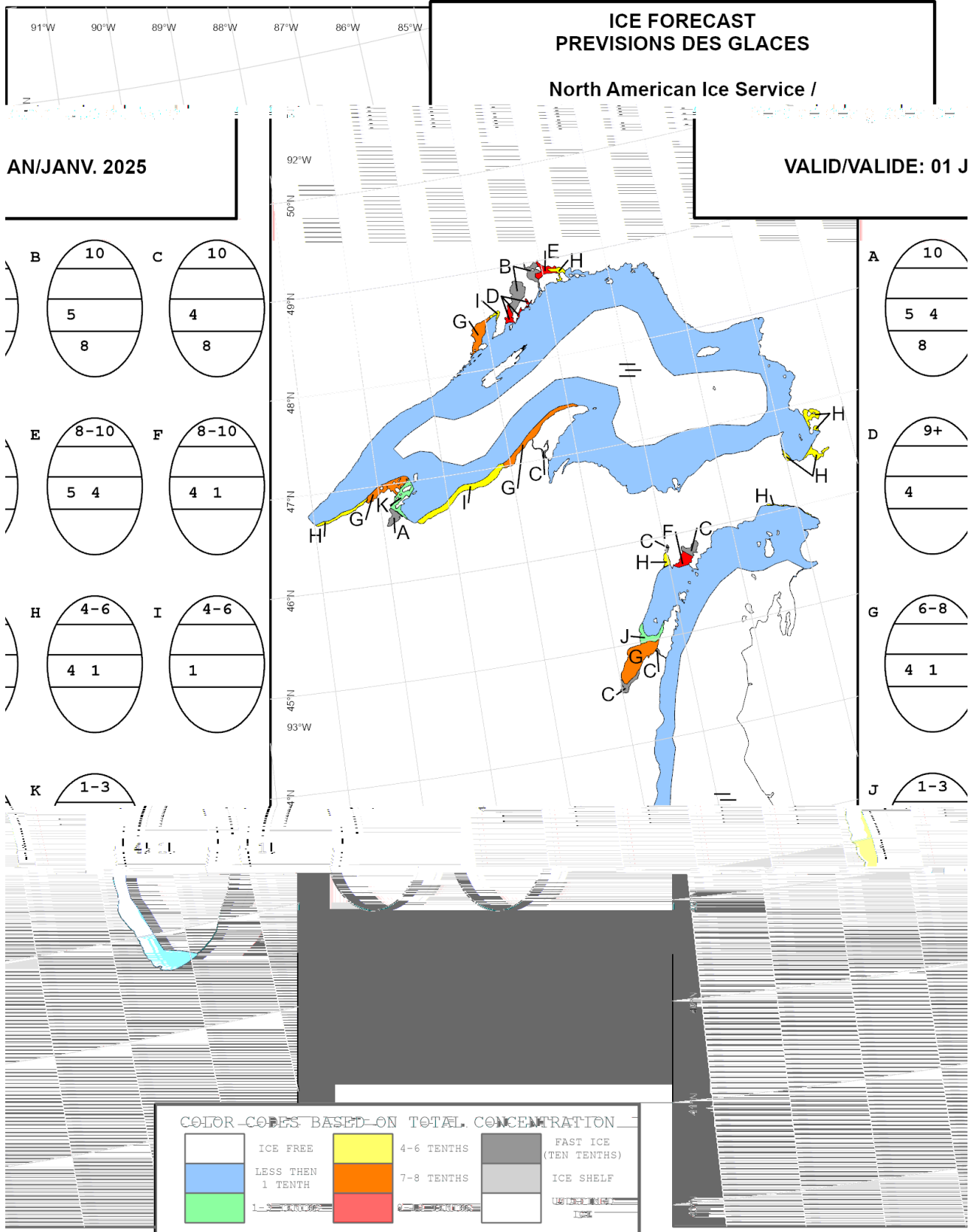
Consolidated thin lake ice along parts of the shore east of Cobourg.

Outlook for February...

February 1-14: Open water except 4-6 tenths thin lake ice along the shore east of Cobourg and along parts of the southern shore. Consolidated medium lake ice along parts of the shore east of Cobourg.

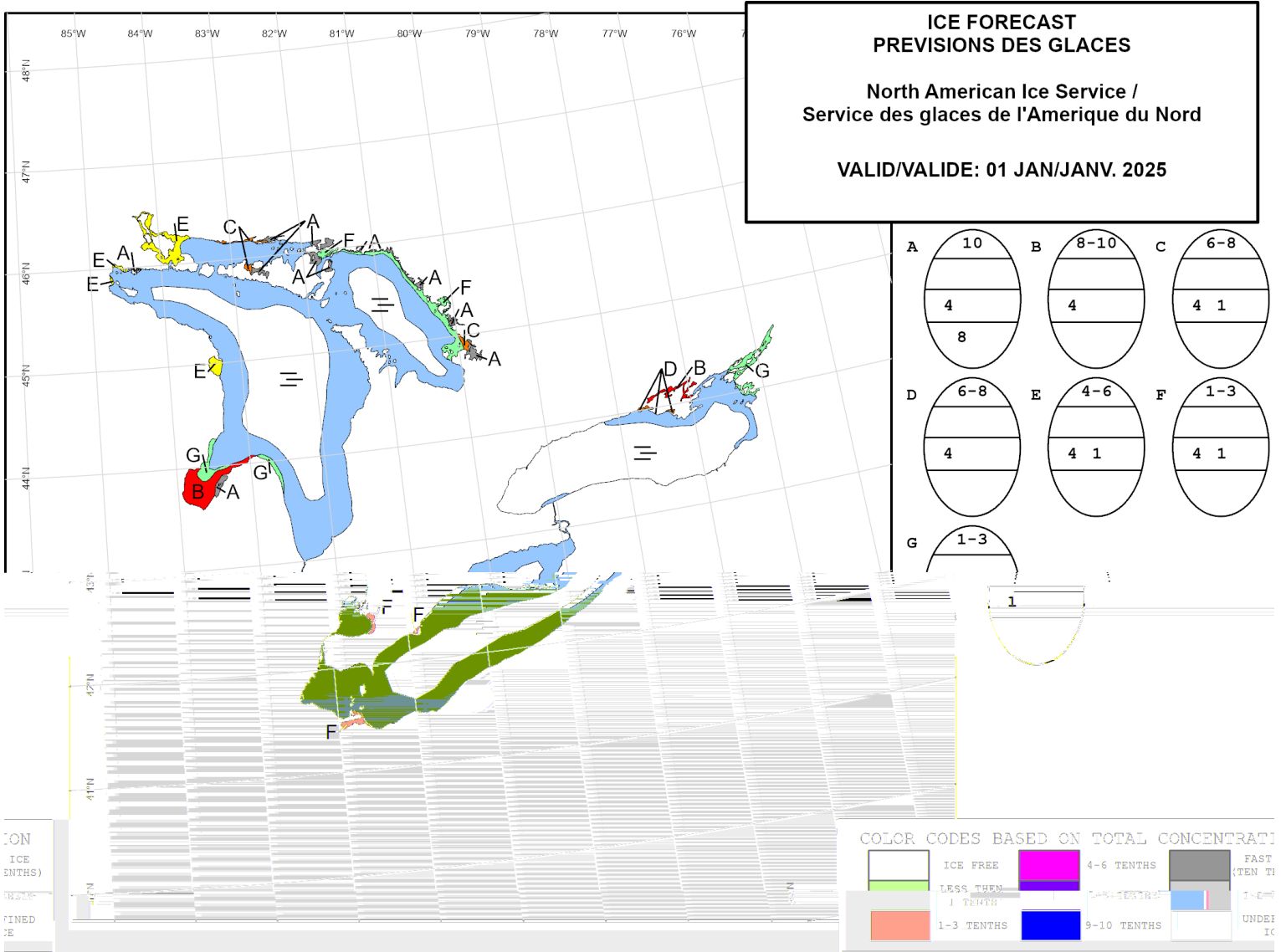
February 15-28: Open water except 9-9+ tenths thin lake ice along the shore east of Cobourg and 7-8 tenths new and thin lake ice along parts of the southern shore. Consolidated medium lake ice along parts of the shore east of Cobourg.

North American Ice Service



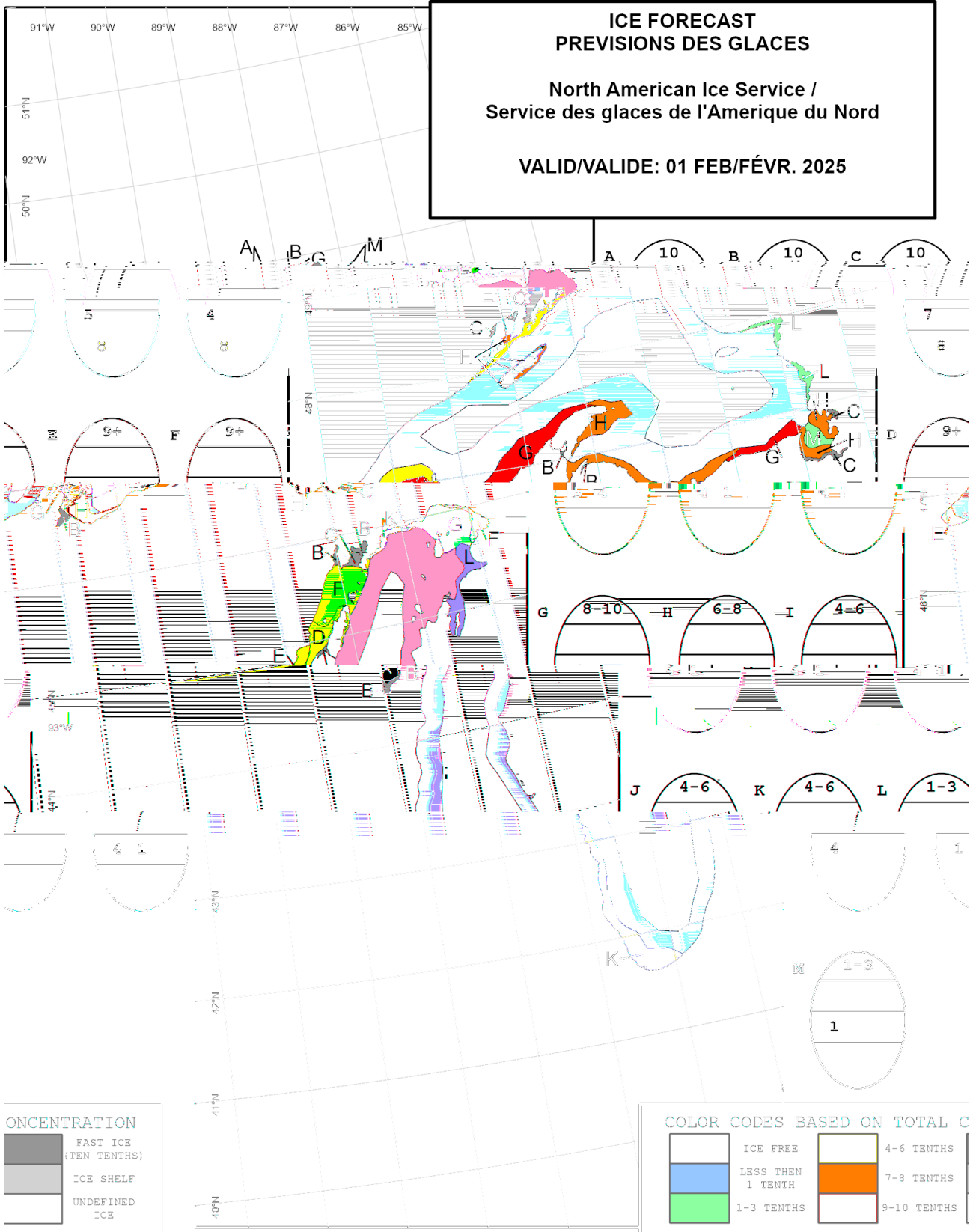
Seasonal Outlook - Great Lakes - Winter 2024-2025

North American Ice Service

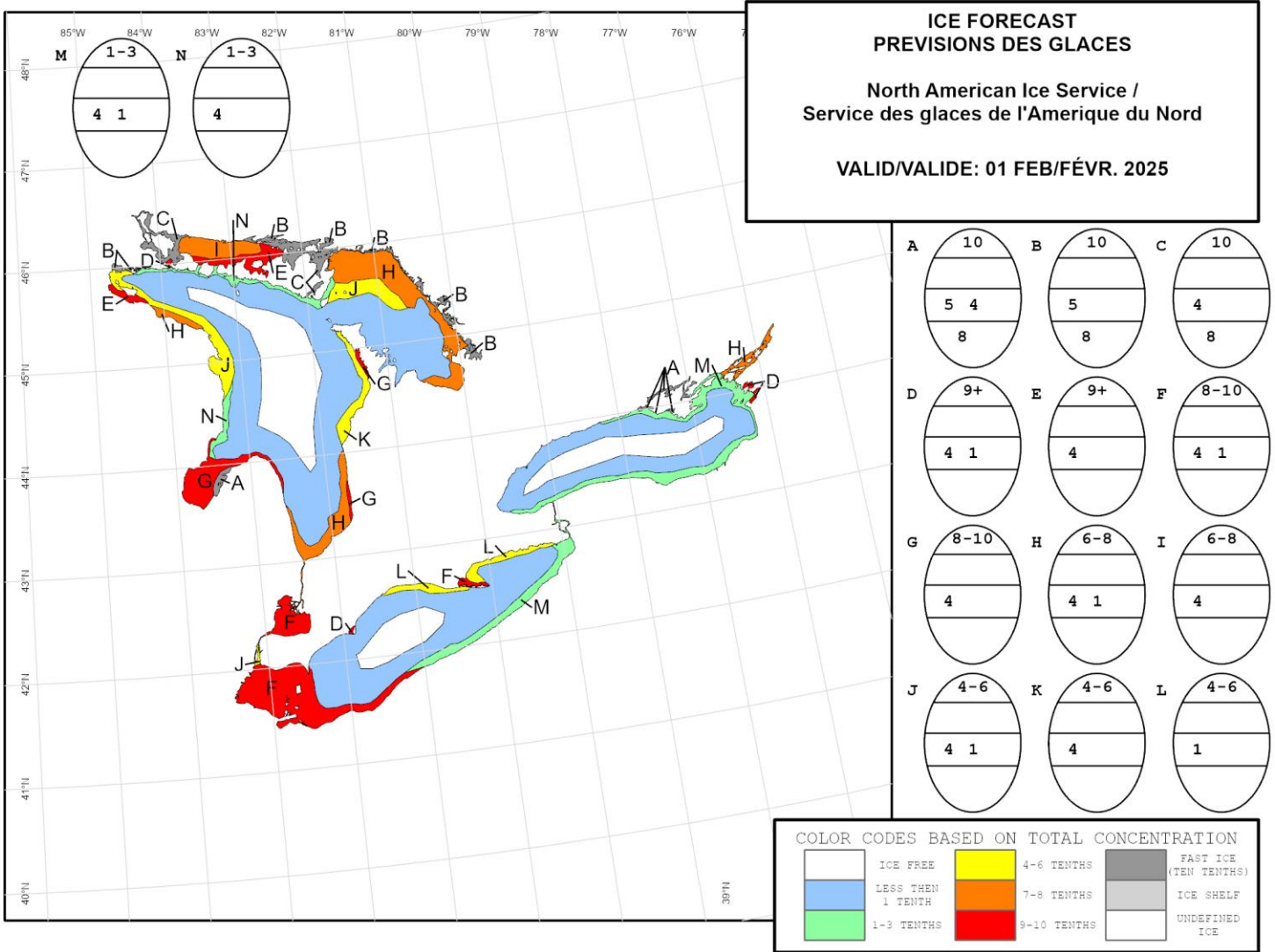


Seasonal Outlook - Great Lakes - Winter 2024-2025



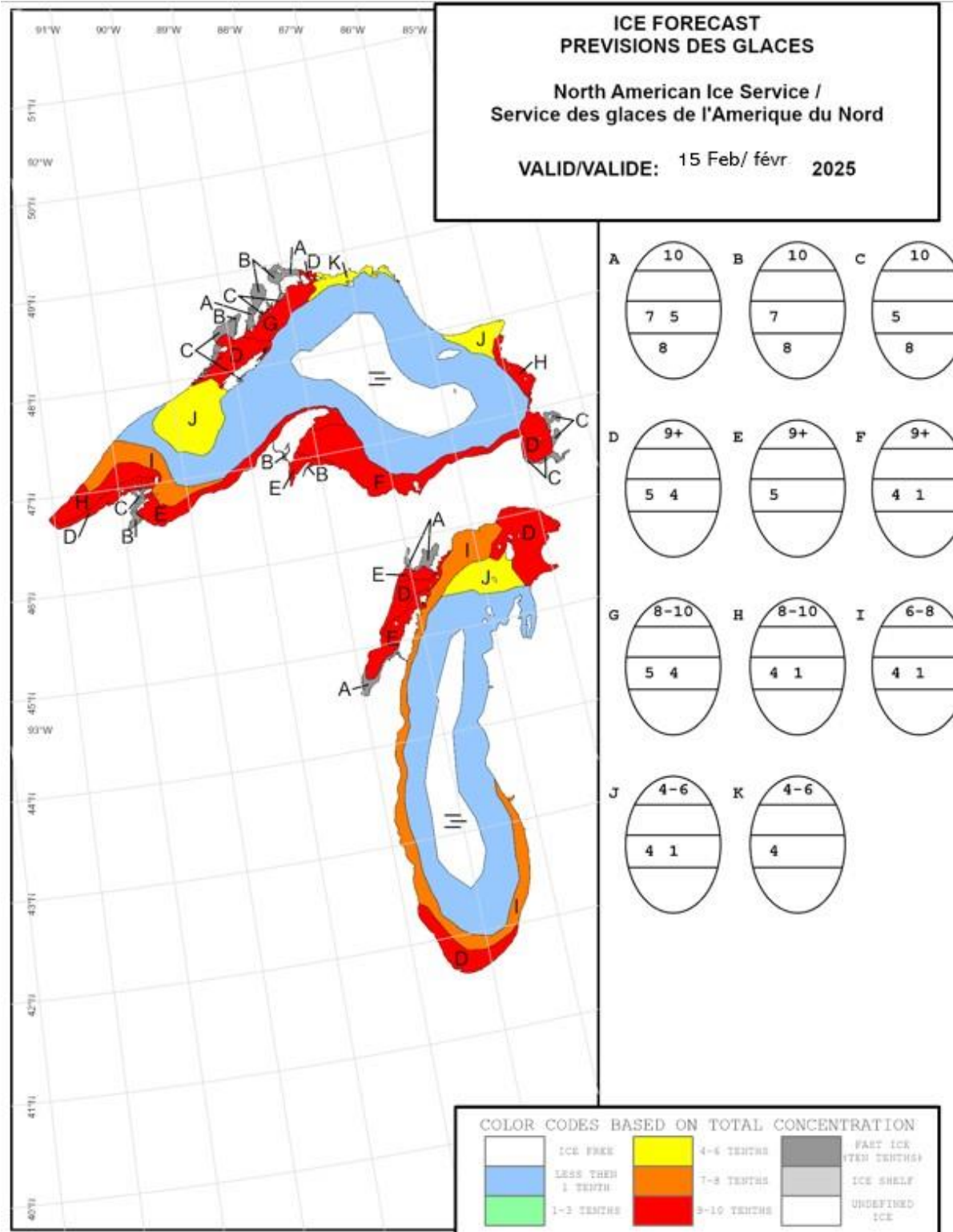


Seasonal Outlook - Great Lakes - Winter 2024-2025

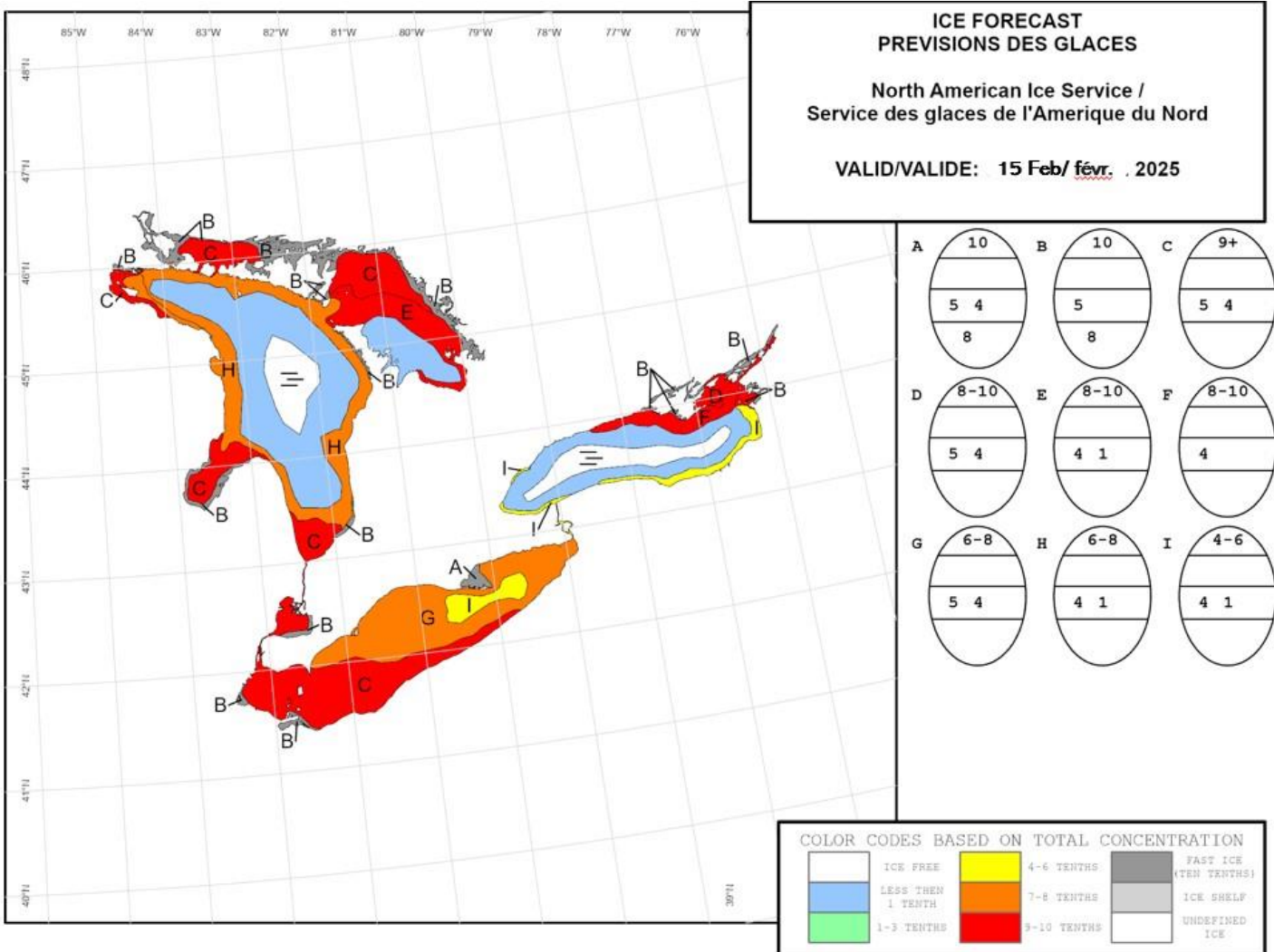


Seasonal Outlook - Great Lakes - Winter 2024-2025

North American Ice Service



Seasonal Outlook - Great Lakes - Winter 2024-2025



Seasonal Outlook - Great Lakes - Winter 2024-2025