



Southeast Michigan Climate Summary

Monthly Temperature, Precipitation, Snowfall, and Severe Weather Summaries

Michigan, Average Temperature, September
1901-2000
Avg. 58.5°F



November 2017

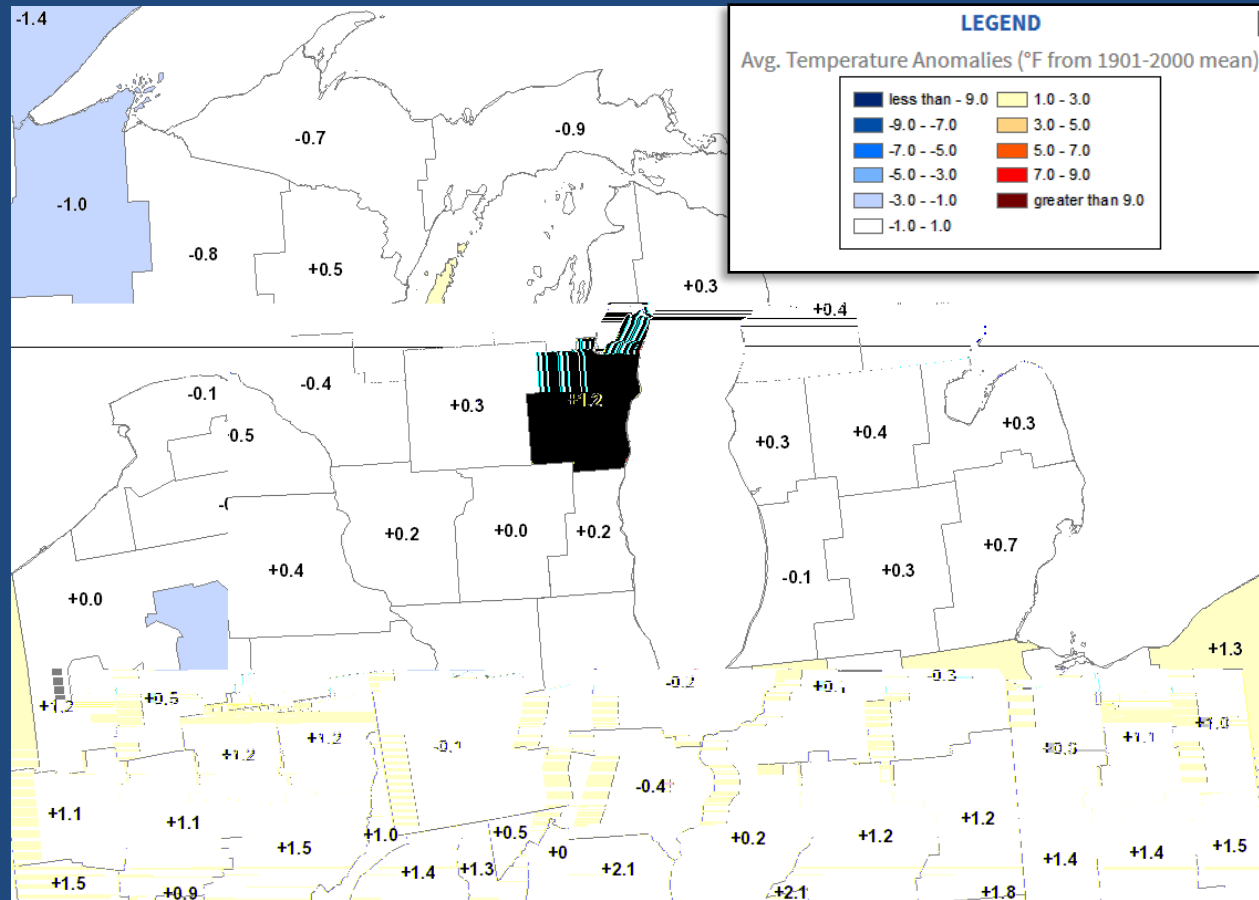




Southeast Michigan Climate Summary

Temperature Anomalies by NCEI Climate Division (page 1 of 2)

Location	Type	Average Temperature
ADRIAN 2 NNE	COOP	38.5
ADRIAN LENAWEЕ COUNTY AP	WBAN	38.0
ALGONAC WWTP	COOP	38.6
ANN ARBOR MUNICIPAL AP	WBAN	37.5
ANN ARBOR SE	COOP	37.9
ANN ARBOR U OF MICH	COOP	38.7
BAD AXE	COOP	36.1
BURTON 4N	COOP	36.5
CARO WWTP	COOP	36.6
CASS CITY 1 SSW	COOP	35.5
CHELSEA	COOP	37.8
CORUNNA 2 NE	COOP	38.2
DEARBORN	COOP	39.7
DETROIT CITY AP	WBAN	40.8
DETROIT METROPOLITAN AP	WBAN	40.4
DETROIT WILLOW RUN AP	WBAN	40.4
DUNDEE	COOP	39.4
DURAND WWTP	COOP	37.1
FARMINGTON	COOP	37.1
FILION 5NNW	COOP	35.2
FLINT 7 W	COOP	36.9
FLINT BISHOP INTL AP	WBAN	37.6
GOODRICH	COOP	37.2
GROSSE POINTE FARMS	COOP	40.2
HARBOR BEACH 1 SSE	COOP	36.8
LAPEER 2W	COOP	38.8
LAPEER WWTP	COOP	36.9
LEXINGTON WATER PLANT	COOP	37.2
LINDEN WWTP	COOP	37.1
MANCHESTER	COOP	38.6
MIDLAND	COOP	37.2
MILFORD GM PROVING GROUND	COOP	37.5

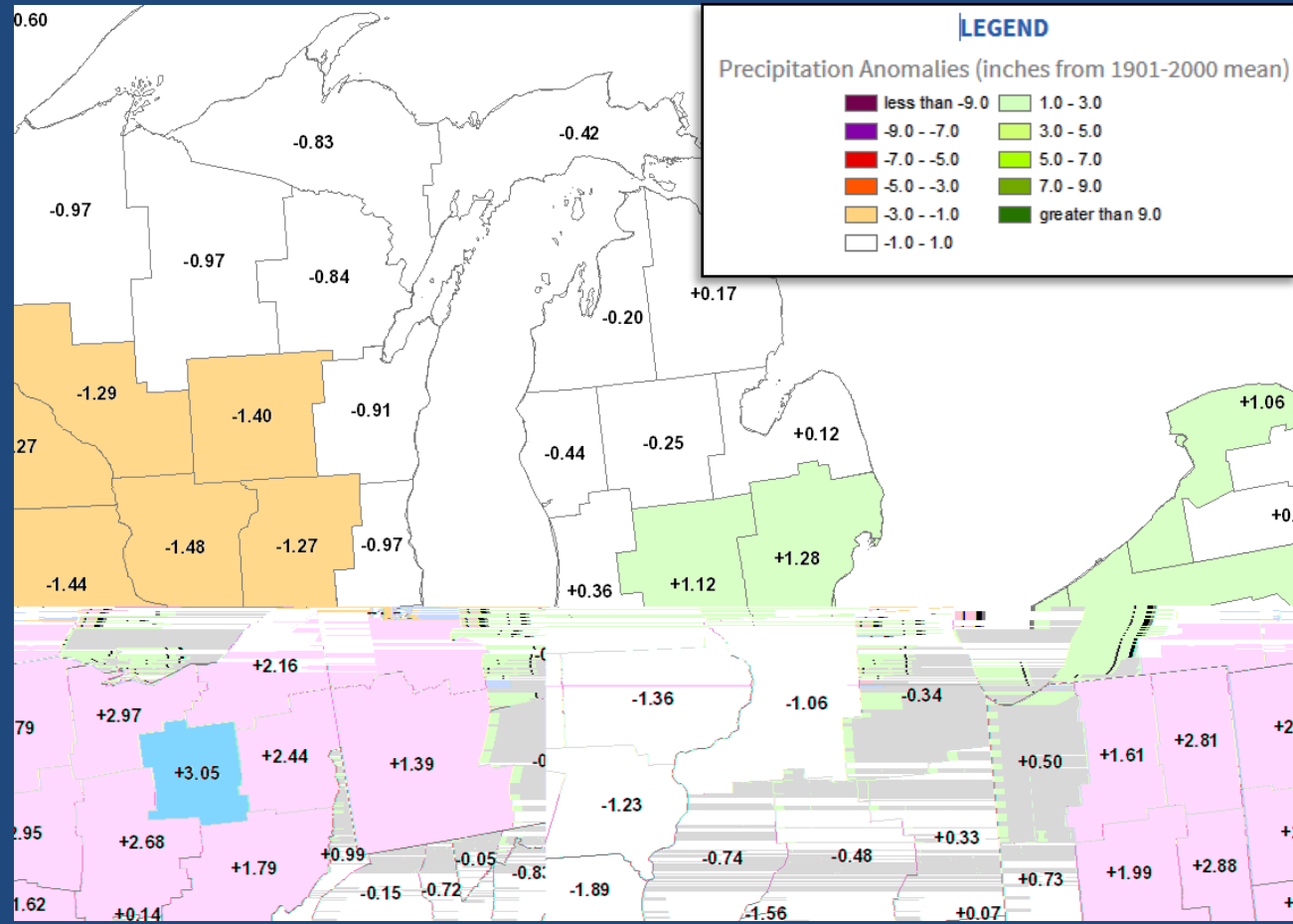




Southeast Michigan Climate Summary

Precipitation Anomalies by NCEI Climate Division (page 1 of 3)

Location	Type	Precipitation
ADRIAN 5.2 NE	CoCoRaHS	4.79
ALGONAC WWTP	COOP	3.39
ANN ARBOR 2.1 WNW	CoCoRaHS	4.06
ANN ARBOR 3.1 SE	CoCoRaHS	3.29
ANN ARBOR 4.5 W	CoCoRaHS	3.67
ANN ARBOR MUNICIPAL AP	WBAN	3.90
ANN ARBOR SE	COOP	4.13
ANN ARBOR U OF MICH	COOP	4.46
BAD AXE	COOP	2.85
BAY CITY 2.2 WNW	CoCoRaHS	3.65
BLISSFIELD 1NNE	COOP	6.35
BLOOMFIELD TOWNSHIP 3.1 SW	CoCoRaHS	3.53
BROOKLYN 4.4 SSW	CoCoRaHS	4.03
BURTON 4N	COOP	3.26
CANTON 0.7 NW	CoCoRaHS	4.82
CARLETON 2.5 S	CoCoRaHS	6.48
CASS CITY 1 SSW	COOP	2.64
CHELSEA	COOP	3.38
CORUNNA 2 NE	COOP	2.09
DEARBORN	COOP	4.45
DEARBORN HEIGHTS 1.8 NW	CoCoRaHS	4.17
DETROIT CITY AP	WBAN	3.05
DETROIT METROPOLITAN AP	WBAN	4.93
DETROIT WILLOW RUN AP	WBAN	3.18
DEXTER 0.9 NW	CoCoRaHS	3.56
DEXTER 2.2 SE	CoCoRaHS	3.76
DUNDEE	COOP	5.28
DURAND 6.2 WNW	CoCoRaHS	3.00
FARMINGTON	COOP	3.69
FARMINGTON HILLS 1.4 N	CoCoRaHS	3.30
FENTON 2.7 SSE	CoCoRaHS	3.25
FENTON 5.6 WSW	CoCoRaHS	3.53

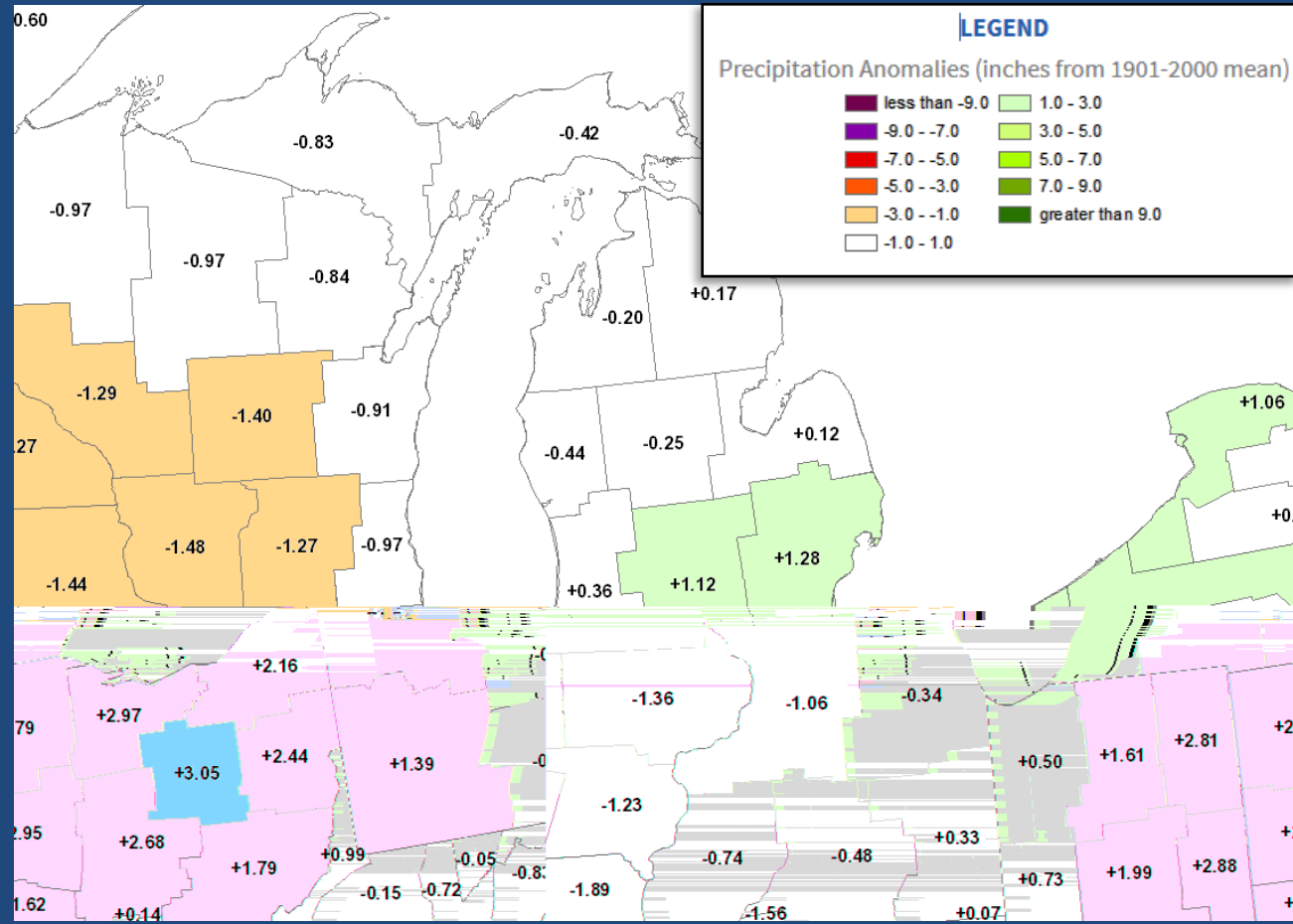




Southeast Michigan Climate Summary

Precipitation Anomalies by NCEI Climate Division (page 2 of 3)

Location	Type	Precipitation
FLINT 7 W	COOP	2.78
FLINT BISHOP INTL AP	WBAN	3.11
FRASER 1.2 N	CoCoRaHS	3.51
GOODRICH	COOP	2.86
GROSSE ILE 1.6 N	CoCoRaHS	5.36
HARBOR BEACH 1 SSE	COOP	2.89
LAPEER 2W	COOP	3.18
LAPEER WWTP	COOP	3.22
LINDEN WWTP	COOP	3.44
MANCHESTER	COOP	3.74
MIDLAND	COOP	2.31
MIDLAND 1.8 ENE	CoCoRaHS	2.03
MIDLAND 2.9 SW	CoCoRaHS	2.27
MILAN WWTP	COOP	5.00
MILFORD GM PROVING GROUND	COOP	2.52
MILLINGTON 3 SE	COOP	2.85
MONROE 3.1 SW	CoCoRaHS	5.86
MORENCI	COOP	5.62
MOUNT CLEMENS 2 WNW	COOP	3.79
NEW BALTIMORE 0.4 SSE	CoCoRaHS	3.50
NEWPORT 4SSE	COOP	6.00
OIL CITY 2S	COOP	2.34
OWOSSO WWTP	COOP	2.72
PONTIAC OAKLAND COUNTY INTL AP	WBAN	2.73
PONTIAC WWTP	COOP	3.37
PORT HOPE	WBAN	2.25
PORT HURON	COOP	2.63
PORT HURON 1.6 W	CoCoRaHS	2.72
RICHMOND 4 NNW	COOP	2.24
ROSEVILLE 1.7 ENE	CoCoRaHS	3.45
SAGINAW 3.0 NW	CoCoRaHS	2.30
SAGINAW 5W	COOP	1.78

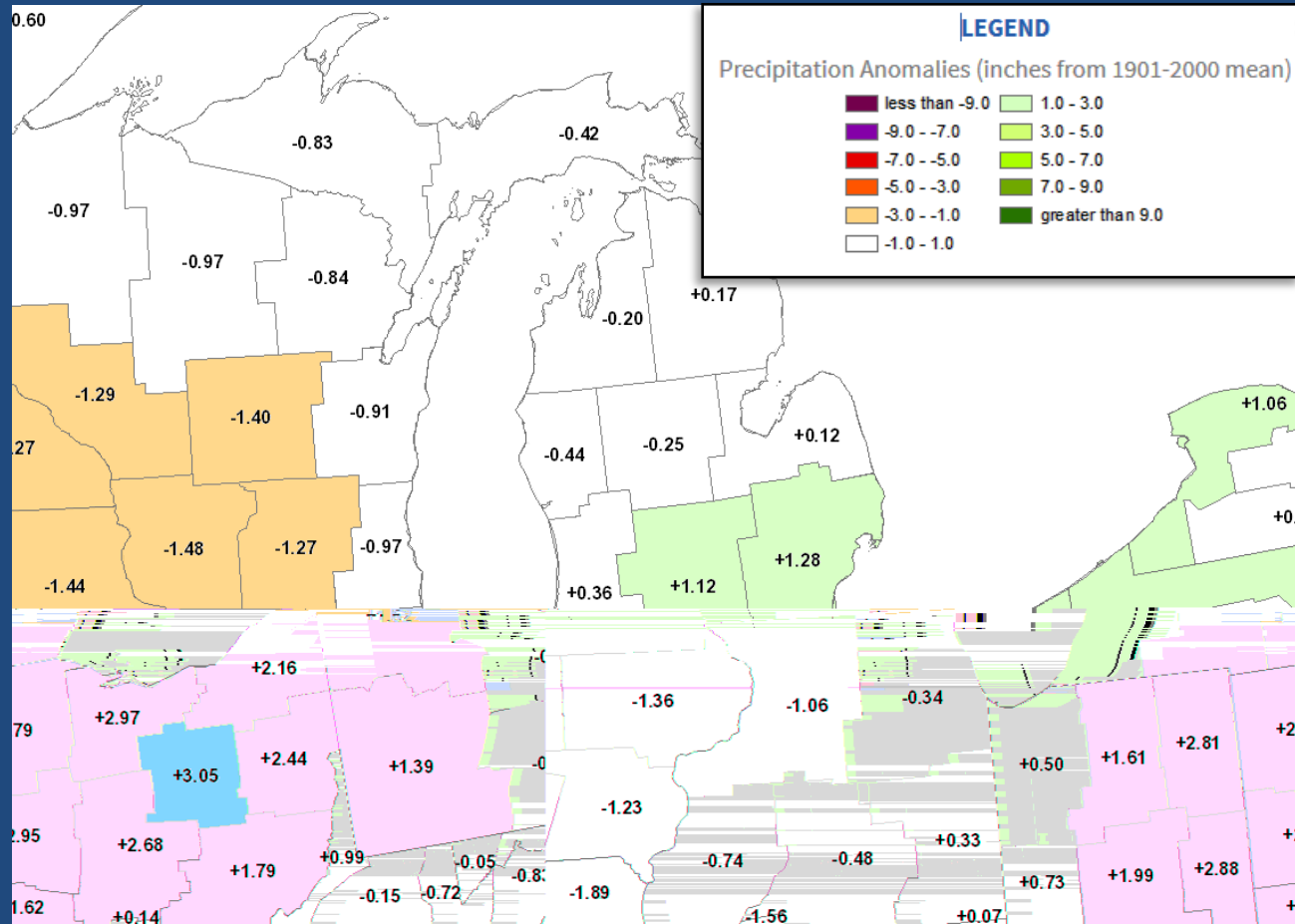




Southeast Michigan Climate Summary

Precipitation Anomalies by NCEI Climate Division (page 3 of 3)

Location	Type	Precipitation
SAGINAW #3	COOP	2.36
SAGINAW MBS INTL AP	WBAN	2.05
SALINE 3.8 SSW	CoCoRaHS	3.75
SHELBY 0.4 SSE	CoCoRaHS	2.73
SOUTHFIELD 2.8 NNE	CoCoRaHS	3.33
TROY 1.8 S	CoCoRaHS	2.91
UTICA 2.9 E	CoCoRaHS	3.04
WATERFORD 2.1 NW	CoCoRaHS	2.62
WEST BLOOMFIELD	COOP	3.55
WHITMORE LAKE 1NW	COOP	2.51
WYANDOTTE	COOP	4.49
YALE 1 NNW	COOP	2.98

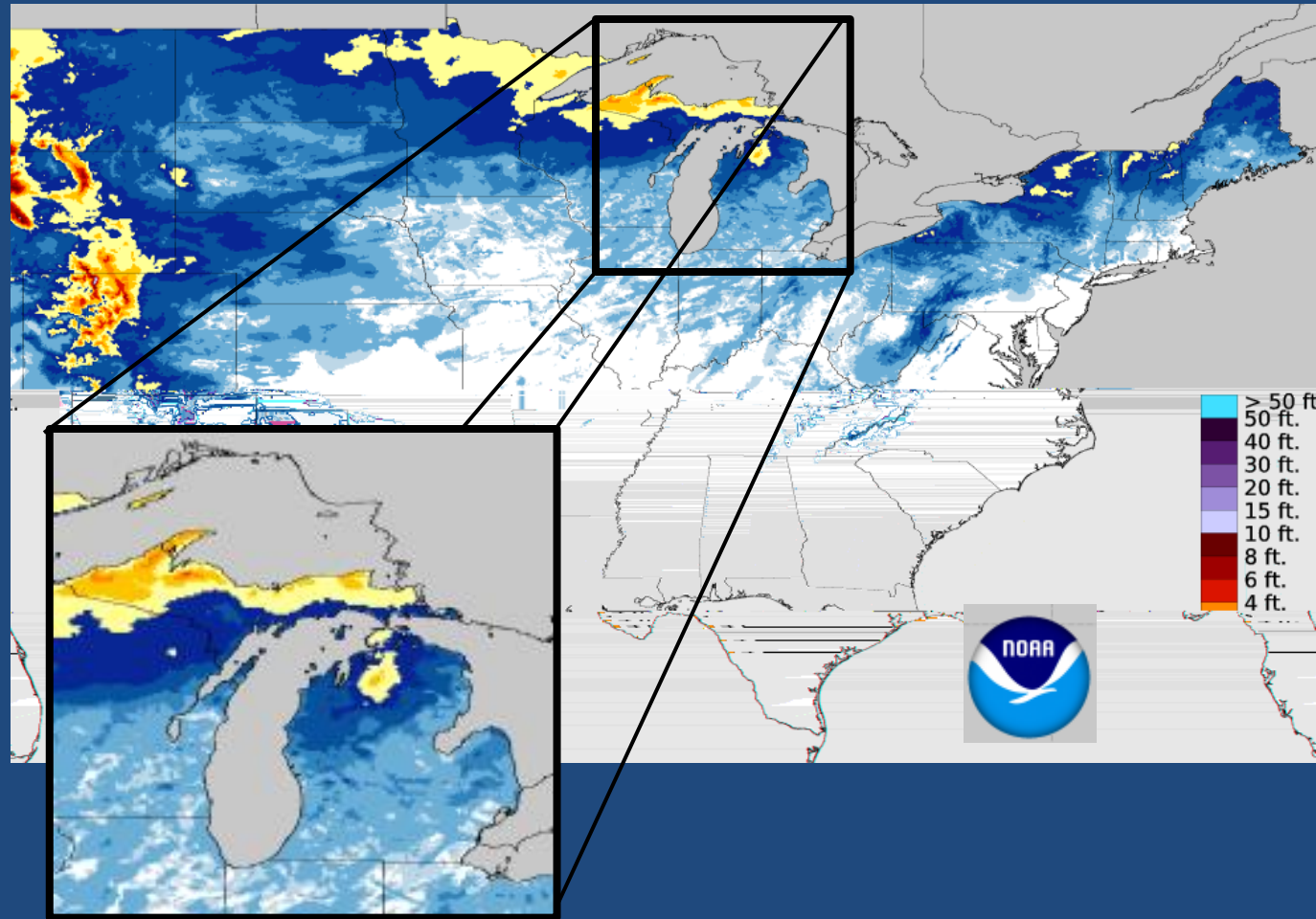




Southeast Michigan Climate Summary

NOHRSC Season Snow Accumulation as of November 31, 2017

Location	Type	November Snowfall
ALGONAC WWTP	COOP	0
ANN ARBOR SE	COOP	1.2
ANN ARBOR U OF MICH	COOP	1.4
BAD AXE	COOP	0.4
BLISSFIELD 1NNE	COOP	0
CASS CITY 1 SSW	COOP	0
CORUNNA 2 NE	COOP	0.6
DURAND WWTP	COOP	0.1
FARMINGTON	COOP	0.2
FLINT 7 W	COOP	0.3
FLINT BISHOP INTL AP	WBAN	0.3
GROSSE POINTE FARMS	COOP	0.1
HARBOR BEACH 1 SSE	COOP	0.2
LAPEER 2W	COOP	2.3
LAPEER WWTP	COOP	0
MILLINGTON 3 SE	COOP	1.5
NORTHVILLE 3.2 ENE	CoCoRaHS	0
OIL CITY 2S	COOP	0.7
PONTIAC WWTP	COOP	0
PORT HURON 1.6 W	CoCoRaHS	0.9
RICHMOND 4 NNW	COOP	0.5
WHITMORE LAKE 1NW	COOP	0
YALE 1 NNW	COOP	0.5





Southeast Michigan Climate Summary

Significant Weather – click image for web story

No significant events in November 2017



Southeast Michigan Climate Summary

Additional Climate Information

Observed Weather | Climate Locations | Climate Prediction

Observed

1. Product »

- Daily Climate Report (CLI)
- Preliminary Monthly Climate Data (CF6)
- Record Event Report (RER)
- Monthly Weather Summary (CLM)
- Regional Summary (RTP)
- State Summary (Temp/Precip)

2. Location »

- Detroit
- Flint
- Saginaw

Southeast Michigan Climate

<http://w2.weather.gov/climate/index.php?wfo=dtx>

NOAA NATIONAL CENTERS FOR ENVIRONMENTAL INFORMATION

Home | Climate Information | Data Access | Customer Support | Contact | About

Climate at a Glance

Climate Monitoring | State of the Climate | Temp, Precip, and Drought | Climate at a Glance | Extremes | Social Impacts | Snow and Ice | Teleconnections | GHCN Monthly | Monitoring References

Time Series | Mapping | Data Information | Background

U.S. | Globe

Choose from the options below and click "Plot" to create a time series graph.

Parameters: Average Temperature | Options

Time Scale: 1-Month | # Display Base Period

Month: September | Start: 1991 | End: 2009

Start Year: 1895 | # per Decade: 0 per Century

End Year: 2016 | Start: 1895 | End: 2016

State/Region: Michigan | # Smoothed Time Series

Climate Division/City: Statewide | # Seasonal Filter: LOCKS

Plot

NCEI Climate at a Glance

<http://www.ncdc.noaa.gov/cag/>

NOAA NATIONAL CENTERS FOR ENVIRONMENTAL INFORMATION

Home | Contact Us | About NCEI | Help

CEI > Storm Events Database (Select State)

Storm Events Database

Data available from 01/1950 to 06/2016

Data Access

- Search
- Bulk Data Download (CSV)
- Storm Data Publication

Documentation

- Database Details
- Version History
- Storm Data FAQ
- NOAA's NWS Documentation
- Tornado EF Scale

External Resources

- NOAA's SPC Reports
- NOAA's SPC WCM Page
- NOAA's NWS Damage Assessment Toolkit
- ESRUFEMA Civil Air Patrol Images
- SHELDUS
- USDA Cause of Loss Data

State/Area: Michigan

Begin Date: 06 / 01 / 2015

End Date: 06 / 30 / 2016

County:

- Alcona
- Alger
- Allegan
- Alpena
- Antrim
- Arenac
- Baraga
- Berry
- Bay

Storm Event Database

<http://www.ncdc.noaa.gov/stormevents/>



NWS Detroit/Pontiac, MI

<http://www.weather.gov/dtx>