

Southeast Michigan Climate Summary

Monthly Temperature, Precipitation, and Severe Weather Summaries

Weather Forecast Office
Detroit, MI

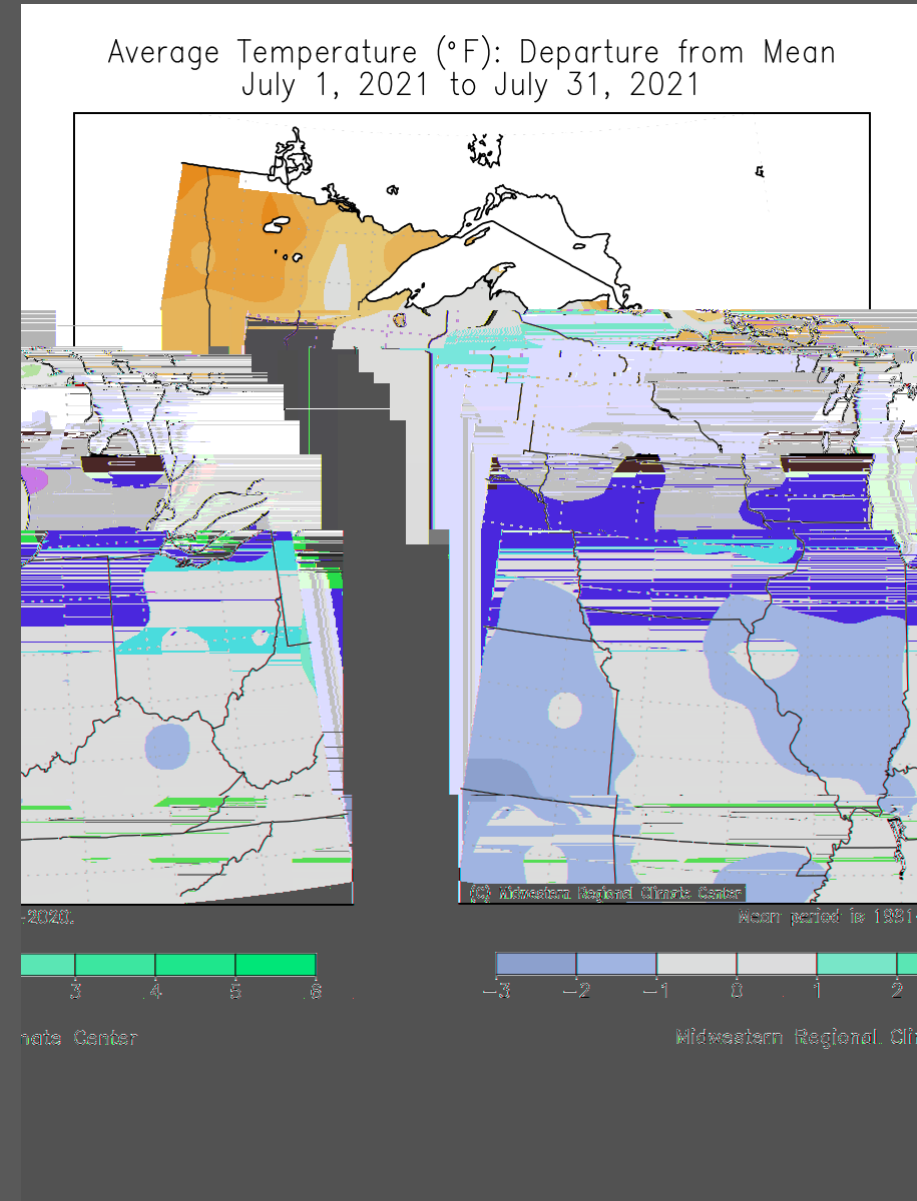
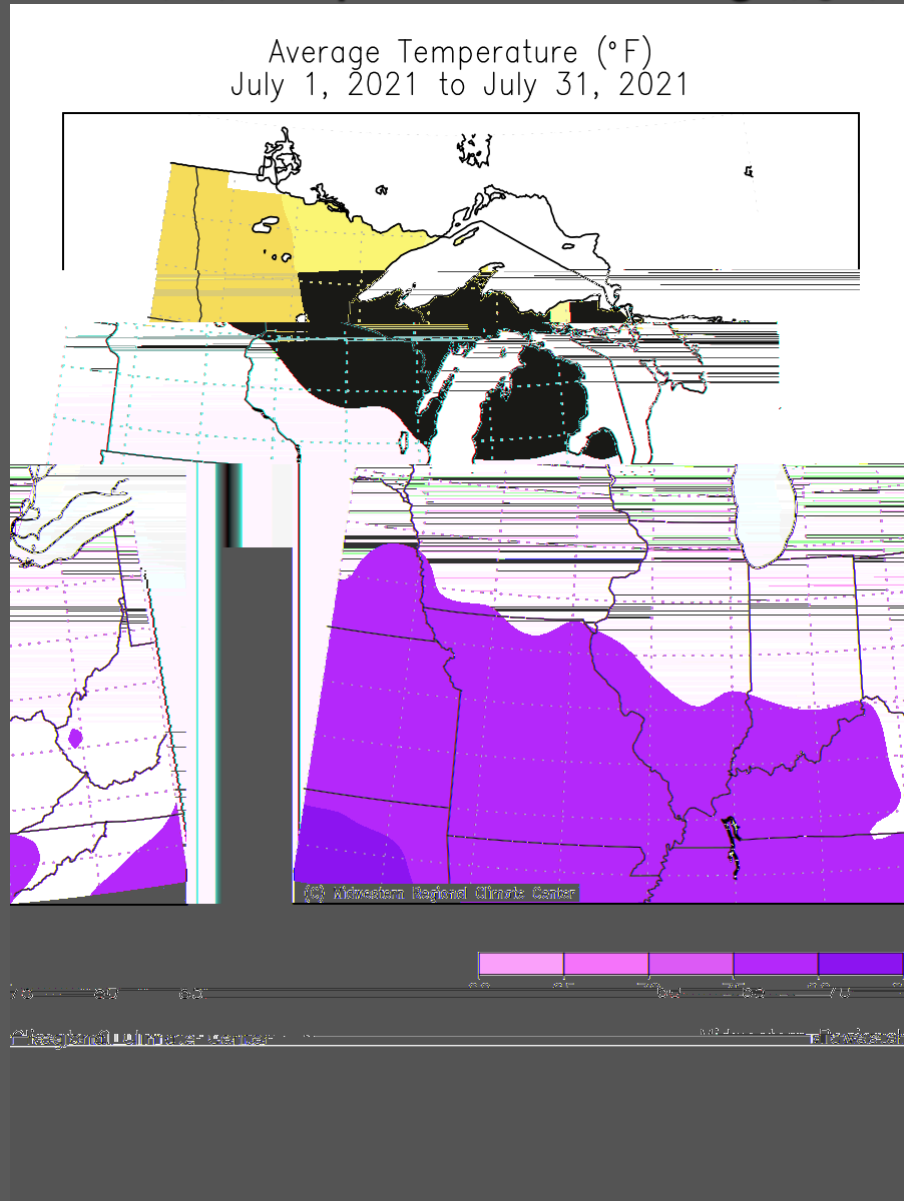


July 2021 – Regional Temperature Summary

Weather Forecast Office
Detroit, MI



Average Temperature (left) & Departure from Average (right)



July 2021 – SE Michigan Temperature Summary

Weather Forecast Office
Detroit, MI



Warmest, Coldest, and Averages (°F)

Location	Highest Temp	Lowest Temp	Avg High	Avg Low	Monthly Avg	Location	Highest Temp	Lowest Temp	Avg High	Avg Low	Monthly Avg
ADRIAN LENAWEE COUNTY AP	89	54	80.7	63.0	71.9	LAPEER 2W	90	51	80.0	61.5	70.8
ALGONAC WWTP	93	50	82.9	61.2	72.0	LAPEER WWTP	90	52	81.1	61.5	71.3
ANN ARBOR MUNICIPAL AP	90	47	81.5	59.1	70.3	LEXINGTON WATER PLANT	89	50	78.0	61.0	69.7
ANN ARBOR SE	91	51	81.9	61.1	71.5	LINDEN WWTP	88	52	79.0	60.2	69.6
ANN ARBOR U OF MICH	90	49	82.2	61.2	71.7	MANCHESTER	91	51	82.0	62.0	72.0
BAD AXE	90	50	78.8	60.2	69.5	MORENCI	89	52	80.6	61.2	70.9
BURTON 4N	91	51	81.1	59.6	70.4	NEWPORT 4SSE	91	54	82.8	63.6	73.2
CARO WWTP	92	49	81.3	60.5	70.9	OWOSSO WWTP	90	53	81.4	61.1	71.2
CASS CITY 1 SSW	90	48	79.1	58.4	68.7	PONTIAC INTL AP	90	55	79.9	63.1	71.5
CHELSEA	90	52	81.4	62.4	72.1	PONTIAC WWTP	90	51	80.9	62.2	71.5
DEARBORN NO. 2	93	57	83.9	65.1	74.5	PORT HOPE	91	51	76.5	62.5	69.5
DETROIT CITY AP	93	58	84.0	66.7	75.4	PORT HURON	93	58	80.1	65.6	72.8
DETROIT METRO AIRPORT	92	56	82.8	65.2	74.0	RICHMOND 4 NNW	90	51	80.2	62.4	71.3
DETROIT WILLOW RUN AP	93	55	84.3	65.0	74.6	SAGINAW #3	92	53	81.5	62.2	71.8
FARMINGTON	90	53	80.9	61.2	71.1	SAGINAW MBS INTL AP	91	52	80.8	62.3	71.5
FILION 5NNW	90	51	78.6	60.1	69.4	SALINE 4SW	92	52	83.2	61.0	72.2
FLINT 7W	88	52	80.1	61.0	70.5	TECUMSEH	92	48	83.1	56.3	69.6
FLINT FCWOS	91	52	81.2	61.7	71.5	TIPTON 2WNW	90	51	81.6	59.6	70.6
GOODRICH	89	53	79.9	61.0	70.5	VASSAR	91	48	80.7	58.3	69.5
GROSSE POINTE FARMS	97	56	83.6	64.9	74.3	WHITE LAKE 4E	87	46	79.2	58.2	68.7
HARBOR BEACH 1 SSE	91	51	75.4	61.5	68.5	WHITMORE LAKE 1NW	89	52	80.6	60.9	70.7



Top 20 Coldest/Warmest Julys in Southeast Lower Michigan (°F)

Rank	Detroit Area*				Flint Bishop**				Saginaw Area***			
	Coldest		Warmest		Coldest		Warmest		Coldest		Warmest	
	Temp	Year	Temp	Year	Temp	Year	Temp	Year	Temp	Year	Temp	Year
1	67.1	1891	79.3	2011	65.6	2009	78.0	1921	66.0	2009	77.5	1921
2	68.8	1992	79.0	2012	66.9	1992	77.7	1935	66.2	1992	76.8	1916
3	68.9	2009	79.0	1955	67.3	1967	76.8	2011	67.1	1924	76.4	2012
4	68.9	1967	79.0	1921	67.3	1962	76.7	1934	67.2	1920	76.2	1935
5	69.6	1971	77.9	1916	67.4	1971	76.5	1955	67.3	1945	76.1	2011
6	69.6	1875	77.7	1931	67.4	1960	76.1	2012	67.5	1962	76.0	1931
7	69.7	1920	77.5	2020	67.5	2000	76.1	1931	67.5	1956	75.9	2020
8	69.9	2014	77.1	1988	67.6	1996	76.0	2016	67.8	1950	75.9	1955
9	69.9	1924	76.8	2016	68.3	2014	75.9	1936	67.9	2000	75.9	1936
10	69.9	1884	76.8	2019	68.3	1950	75.8	1933	68.2	1965	75.8	1988
11	70.2	2000	76.8	1999	68.4	2004	75.5	1987	68.4	2014	75.5	1934
12	70.3	1882	76.8	1901	68.4	1965	75.2	1988	68.4	1985	75.3	1933
13	70.4	1979	76.6	2010	68.6	1968	75.0	2019	68.5	2004	74.4	2019
14	70.4	1965	76.5	2002	68.6	1956	74.9	2002	68.6	1981	74.3	2010
15	70.4	1915	76.5	1952	68.6	1945	74.7	2020	68.6	1925	74.2	1930
16	70.4	1895	76.2	1949	69.0	1969	74.5	1949	68.7	1947	74.1	1983
17	70.6	1996	76.2	1935	69.1	1947	74.5	1939	68.8	1979	74.1	1937
18	70.6	1978	76.1	2006	69.2	1924	74.2	2010	68.8	1915	73.9	1987
19	70.7	1984	76.0	1987	69.4	1997	74.0	1983	69.1	1978	73.5	2006
20	70.7	1945	75.9	1964	69.4	1954	73.8	1977	69.1	1951	73.5	2002

* Detroit Area temperature records date back to January 1874.

** Flint Bishop temperature records date back to January 1921.

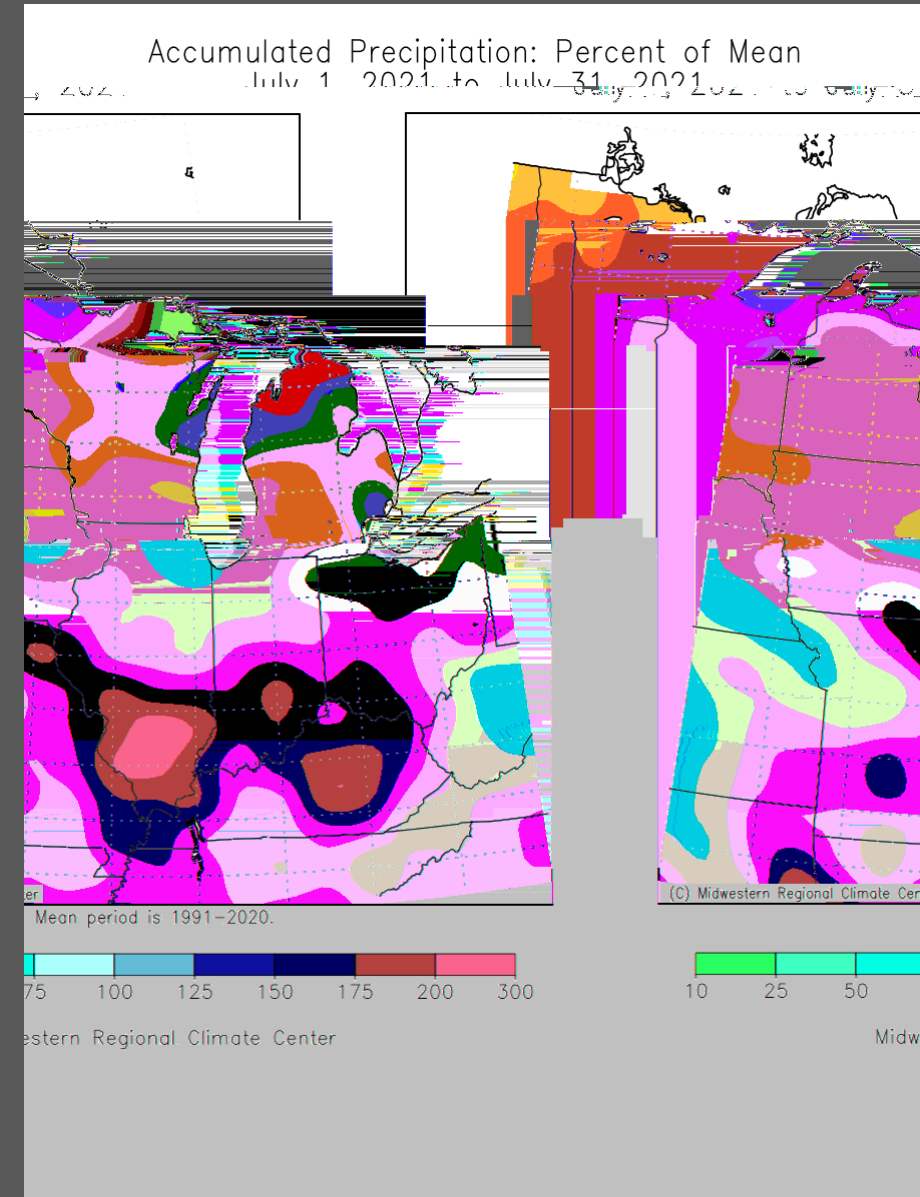
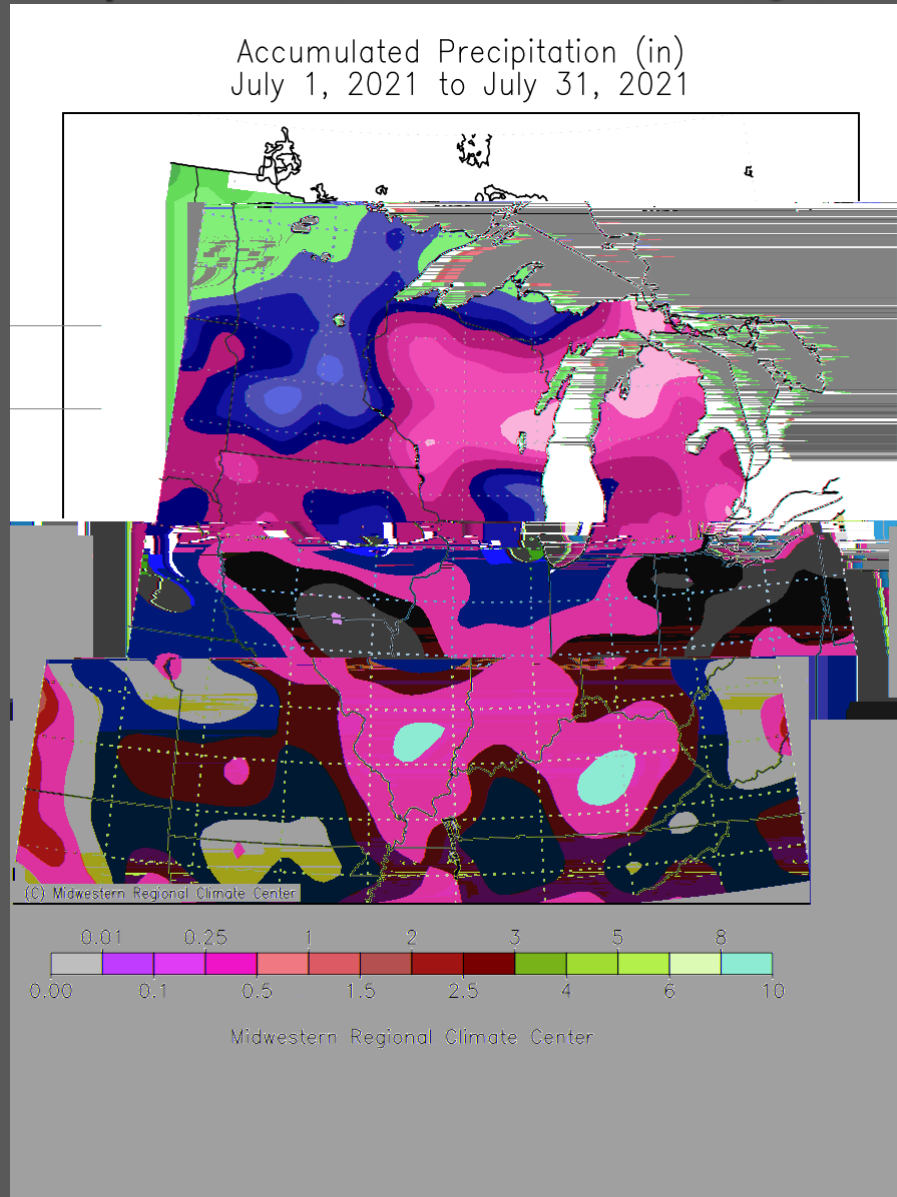
*** Saginaw Area temperature records date back to January 1912.

July 2021 – Regional Precipitation Summary

Weather Forecast Office
Detroit, MI



Total Monthly Precipitation (*left*) & Percent of Mean (*right*)



July 2021 – SE Michigan Precipitation Summary

Weather Forecast Office
Detroit, MI



Highest daily total, monthly total, and total number of days of measureable precip (in.)

Location	Highest Daily Total	Monthly Total	# of Days with Precip	Location	Highest Daily Total	Monthly Total	# of Days with Precip	Location	Highest Daily Total	Monthly Total	# of Days with Precip
ADRIAN LENAWEE CO AP	1.79	5.48	11	DEARBORN NO. 2	2.42	5.29	12	MORENCI	1.78	6.31	12
ALGONAC WWTP	2.50	6.54	12	DETROIT CITY AP	2.52	5.00	11	NEW BALTIMORE 0.4 SSE	1.06	3.78	13
ANN ARBOR 3.0 SE	1.77	3.70	13	DETROIT METRO AIRPORT	2.20	4.95	13	NEWPORT 4SSE	3.33	9.61	13
ANN ARBOR 4.5 W	3.36	4.32	11	DETROIT WILLOW RUN AP	2.34	3.83	13	ORCHARD LK VLG 0.9 WSW	2.43	7.11	15
ANN ARBOR MUNICIPAL AP	1.81	3.98	11	DEXTER 2.2 SE	3.76	5.50	14	ORTONVILLE 2.3 S	1.88	5.21	16
ANN ARBOR SE	1.89	3.52	15	FARMINGTON	2.72	7.65	14	OWOSSO WWTP	1.39	1.98	6
ANN ARBOR U OF MICH	2.65	4.94	13	FARMINGTON HILLS 1.4 N	2.41	6.43	12	PLEASANT RIDGE 0.5 WNW	1.94	5.28	14
BAD AXE	1.22	4.14	14	FENTON 2.7 SSE	2.66	7.42	16	PLYMOUTH 5.4 W	3.07	6.48	13
BAD AXE 0.5 SSW	1.13	4.29	11	FENTON 6.2 WSW	1.35	4.98	14	PONTIAC INTL AP	2.00	4.89	13
BAY CITY 2.4 W	1.04	3.65	12	FILION 5NNW	0.68	3.90	12	PONTIAC WWTP	1.75	6.33	15
BAY PORT 3.2 SSW	1.29	4.22	11	FLINT 7W	1.64	3.74	11	PORT HOPE	1.46	5.08	9
BLOOMFIELD TWP 3.1 SW	2.44	8.30	11	FLINT FCWOS	2.24	4.29	11	PORT HURON	0.45	2.13	9
BURTON 4N	1.24	3.07	11	GOODRICH	2.02	4.16	10	PORT HURON 1.6 W	0.70	3.37	15
CARLETON 2.5 S	1.43	4.29	14	GROSSE POINTE FARMS	3.94	8.14	11	PORT HURON 2.8 WSW	0.74	3.13	13
CARLETON 2W	2.03	4.28	10	HARBOR BEACH 1 SSE	1.27	5.36	10	RICHMOND 4 NNW	2.81	6.63	10
CARO WWTP	1.48	3.26	8	HIGHLAND 1.3 NE	3.53	7.35	16	ROSEVILLE 1.7 ENE	1.89	6.55	16
CASS CITY 1 SSW	1.71	3.46	7	HOWELL 4.9 ESE	1.22	3.66	16	SAGINAW 6.4 W	1.10	3.69	10
CHELSEA	1.51	3.70	13	LAPEER 2W	1.32	3.28	12	SAGINAW 8NW	1.96	3.98	12
CHELSEA 3.7 NNE	1.92	3.53	15	LINDEN WWTP	2.73	5.51	12	SAGINAW #3	1.73	4.24	10
CHESANING	1.70	3.62	7	LIVONIA 2.0 NE	2.50	6.04	14	SAGINAW MBS INTL AP	1.66	4.34	10
CHESTERFIELD 2.4 E	1.08	3.87	11	LIVONIA 2.3 NNW	2.71	6.28	16	SHELBY 0.4 SSE	1.58	5.28	14
CLARKSTON 1.4 NE	2.53	5.34	17	MANCHESTER	1.41	3.93	14	SOUTH LYON 2.6 SW	2.20	4.78	15
CLINTON 0.5 NE	1.01	3.64	15	MIDLAND 1.5 NNE	1.49	4.46	10	WATERFORD 2.1 NW	1.59	5.26	19
DAVISON 5.2 N	0.76	2.30	9	MIDLAND 2.9 SW	1.58	4.94	9	WATERFORD 2.6 N	1.45	5.22	16
DEARBORN HGHTS 1.8 NW	2.44	6.26	18	MONROE 3.0 S	2.25	6.36	15	WHITE LAKE 4E	1.85	4.88	13
								WYANDOTTE	1.87	6.28	16

July – Top 20 Wettest/Driest on Record

Weather Forecast Office
Detroit, MI



Top 20 Wettest/Driest Julys in Southeast Lower Michigan (in.)

Rank	Detroit Area*				Flint Bishop**				Saginaw Area***			
	Wettest		Driest		Wettest		Driest		Wettest		Driest	
	Total	Year	Total	Year	Total	Year	Total	Year	Total	Year	Total	Year
1	8.76	1878	0.50	1930	9.35	1992	0.16	1939	6.83	1950	0.38	1930
2	7.66	2011	0.59	1974	8.55	2000	0.39	1930	6.42	1912	0.44	1939
3	7.55	1902	0.74	1918	7.92	1957	0.67	1931	6.38	1952	0.45	1989
4	7.03	1937	0.78	1924	7.73	1932	0.73	1978	5.63	1928	0.65	1968
5	6.99	1915	0.79	1911	6.43	2011	0.83	1944	5.33	1964	0.74	1948
6	6.94	1925	0.81	1936	6.03	1945	0.87	1954	5.31	1980	0.78	1987
7	6.22	1879	0.95	1984	5.92	1969	0.88	1946	5.19	1924	0.82	1916
8	6.02	1969	0.99	1916	5.76	2014	1.05	1933	5.09	1996	0.92	1984
9	6.01	1943	1.10	1955	5.61	1980	1.08	1934	4.83	1957	0.93	1978
10	5.98	1957	1.10	1946	5.55	1959	1.11	1940	4.75	1913	0.98	1941
11	5.96	2010	1.16	2001	5.43	2005	1.13	1998	4.70	1999	1.01	1965
12	5.94	1909	1.17	1940	5.13	1950	1.19	1960	4.47	1947	1.08	2013
13	5.94	1876	1.20	1956	4.77	1923	1.37	2018	4.45	2012	1.10	1921
14	5.91	1992	1.20	1944	4.56	1947	1.38	1963	4.43	1994	1.11	1954
15	5.74	1880	1.23	1991	4.55	1922	1.43	1943	4.34	2021	1.11	1935
16	5.72	1998	1.24	1926	4.53	1952	1.47	1926	4.25	1992	1.13	1933
17	5.50	1901	1.27	1959	4.44	1937	1.51	1966	4.25	1923	1.14	2004
18	5.40	2000	1.31	1887	4.29	2021	1.53	1955	4.19	1997	1.22	1918
19	5.39	1896	1.44	1960	4.26	2006	1.57	1929	4.19	1991	1.23	1931
20	5.38	2005	1.47	1990	4.22	1949	1.61	2001	4.03	2005	1.23	1929

* Detroit Area precipitation records date back to November 1874.

** Flint Bishop precipitation records date back to January 1921.

*** Saginaw Area precipitation records date back to January 1912.



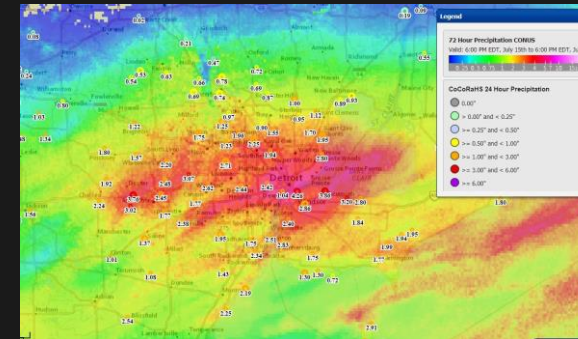
Follow links for web summaries

July 7 Severe Weather
weather.gov/dtx/SevereThunderstorms-07-07-2021

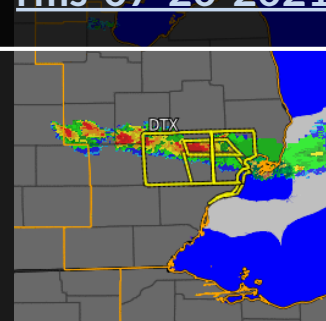


Farmington – Courtesy Spencer Geyman

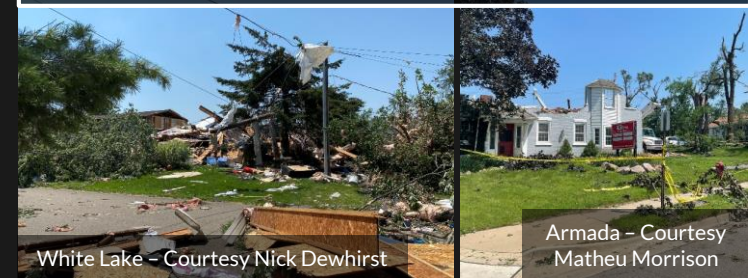
July 16 Metro Detroit Flooding
weather.gov/dtx/Rainfall_07162021



July 20 Severe Weather
weather.gov/dtx/SevereThunderstorms-07-20-2021



July 24 Tornadoes
weather.gov/dtx/SevereThunderstorms-and-Tornadoes-July-24-2021



White Lake – Courtesy Nick Dewhirst

Armada – Courtesy Matheu Morrison



Observed Weather | Climate Locations | Climate Prediction | Climate Resources | Local Data/Records | Astronomical | NOWData

Observed Weather Reports

1. Product »
 Daily Climate Report (CLI)
 Preliminary Monthly Climate Data (CF6)
 Record Event Report (RER)
 Monthly Weather Summary (CLM)
 Regional Summary (RTP)
 State Summary (Temp/Precip)

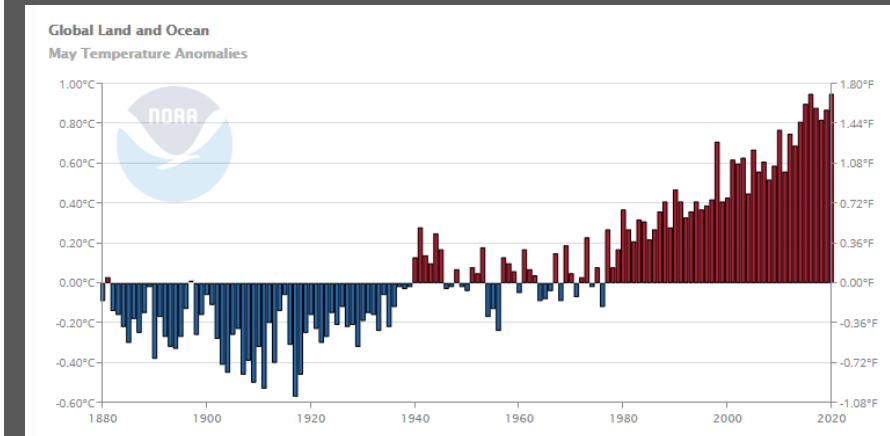
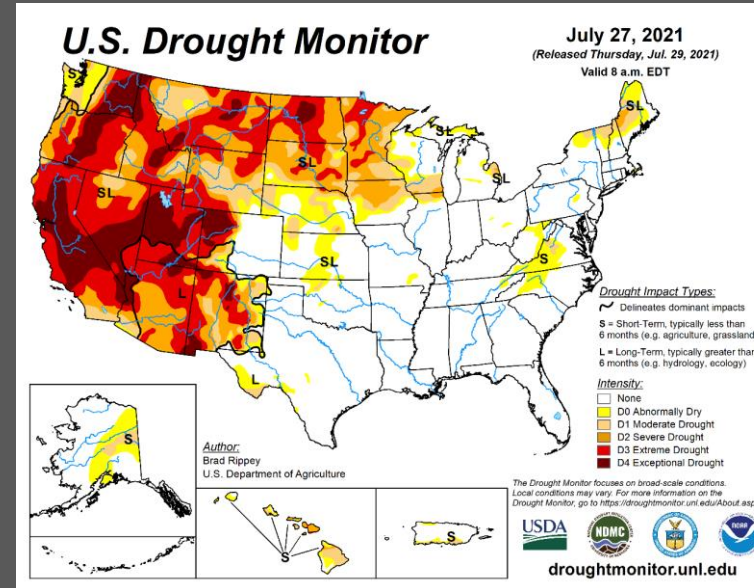
2. Location »
Detroit
Flint
Saginaw

3. Timeframe »
 Most Recent
 Archived Data:
July 3rd, 2020
July 2nd, 2020
July 1st, 2020
June 30th, 2020
June 29th, 2020
June 28th, 2020

4. View »
Go

[Storm Event Database \(NCDC\)](#)

Product Description:
DAILY CLIMATE REPORT - issued daily:
Detailed daily weather statistics (usually for yesterday), including temperature, precipitation, degree days, wind, humidity, sunrise/sunset, and record temperature data for the following day. Precipitation data includes both calendar year and water year totals, percent of normal values, and comparisons to normal. This product is



SE Michigan Climate Products

weather.gov/climate/index.php?wfo=dtx

U.S. Drought Monitor

drought.gov/drought/data-maps-tools/current-conditions

NOAA NCEI Climate at a Glance

ncdc.noaa.gov/cag/

Thank you to our COOP and CoCoRaHS volunteer weather observers!