

Southeast Michigan Climate Summary

Monthly Temperature, Precipitation, and Severe Weather Summaries

Weather Forecast Office
Detroit, MI

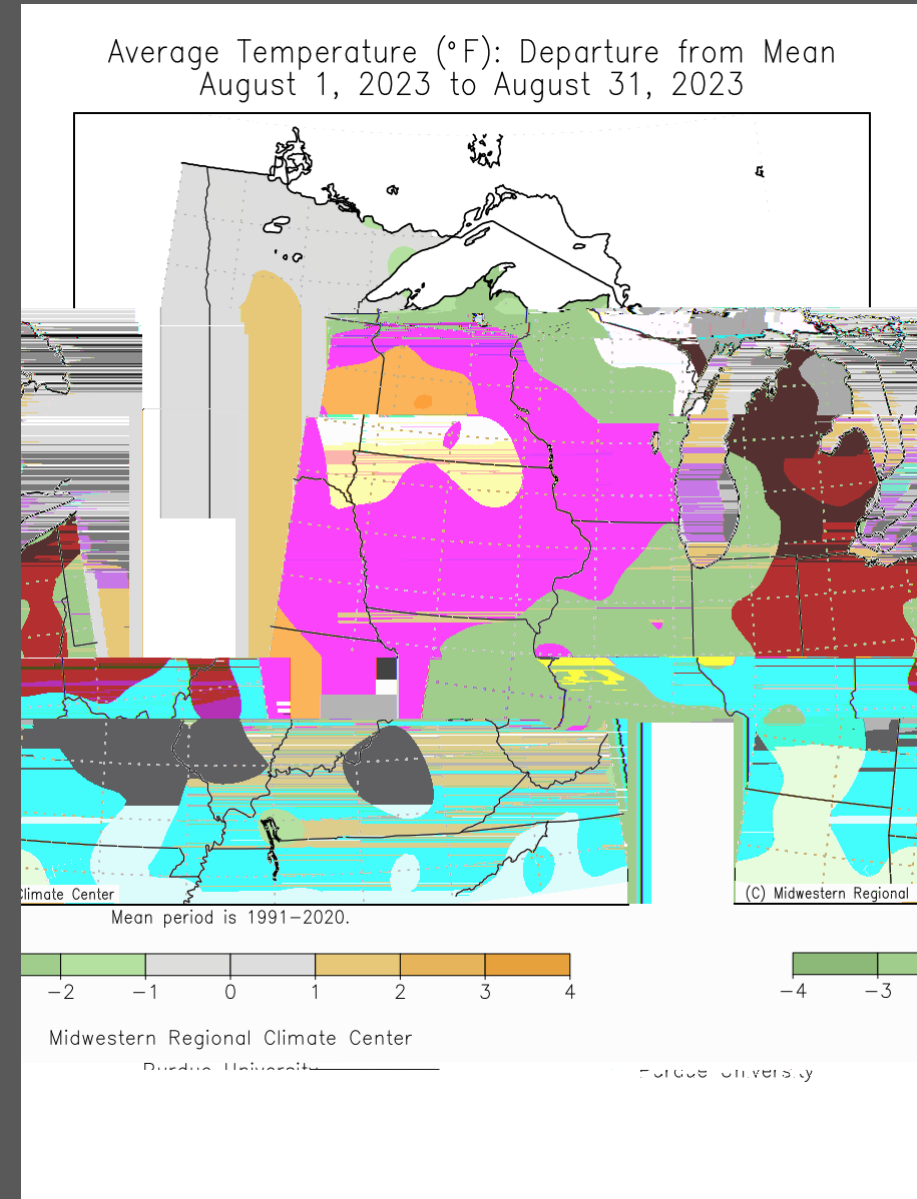
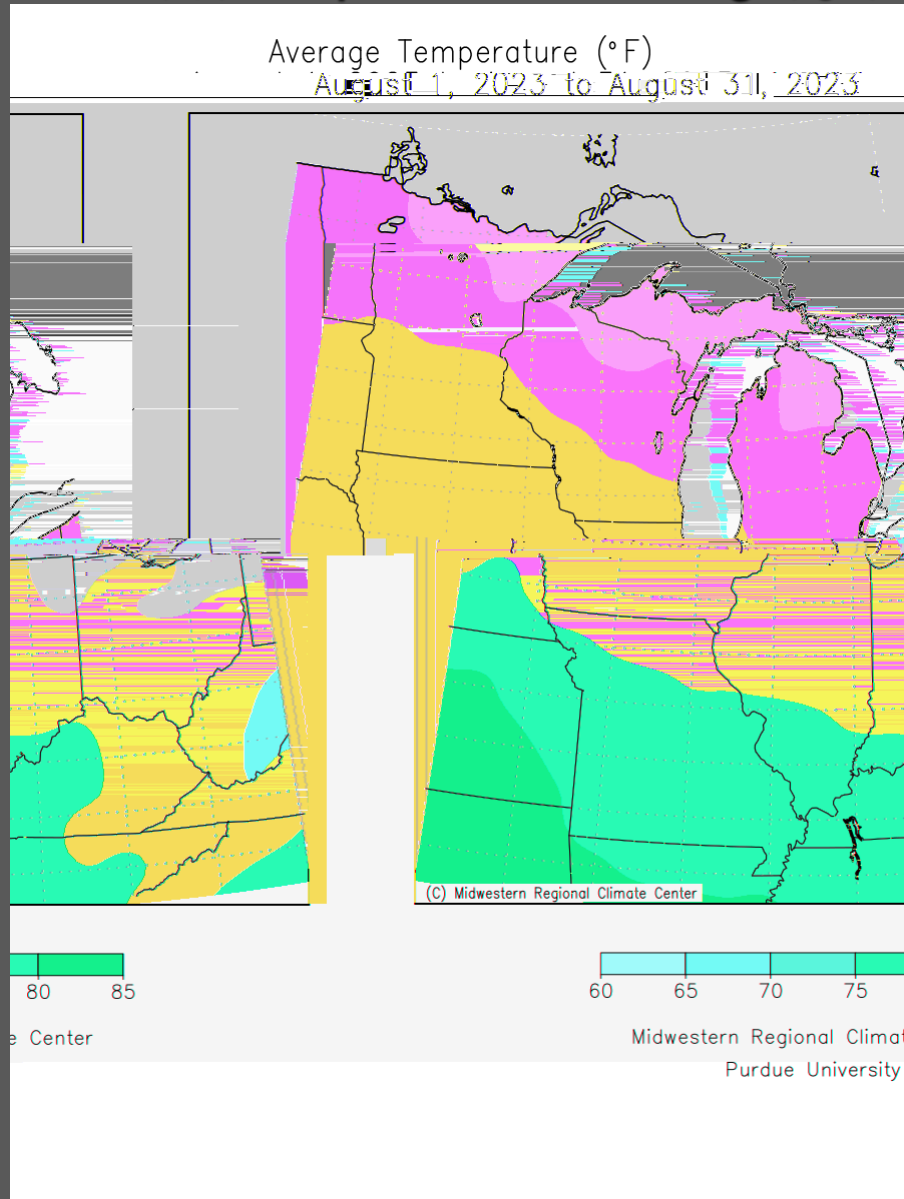



August 2023 – Regional Temperature Summary

Weather Forecast Office
Detroit, MI



Average Temperature (left) & Departure from Average (right)



August 2023 – SE Michigan Temperature Summary						Weather Forecast Office Detroit, MI					
Warmest, Coldest, and Averages (°F)											
Location	Highest Temp	Lowest Temp	Avg High	Avg Low	Monthly Avg	Location	Highest Temp	Lowest Temp	Avg High	Avg Low	Monthly Avg
ADRIAN 2 NNE	91	46	79.5	59.0	69.2	GOODRICH	86	44	75.7	56.9	66.3
ADRIAN LENAWEE CO AP	91	46	79.4	59.5	69.4	GROSSE POINTE FARMS	91	49	79.2	61.1	70.2
ALGONAC WWTP	89	44	79.9	57.7	68.8	HARBOR BEACH 1 SSE	85	46	73.3	57.7	65.5
ANN ARBOR MUNICIPAL AP	87	41	78.6	54.9	66.7	LAPEER 2W	88	44	76.9	56.5	66.7
ANN ARBOR SE	86	45	78.3	56.9	67.6	LAPEER WWTP	88	45	78.0	56.7	67.4
ANN ARBOR U OF MICH	87	42	79.0	57.0	68.0	LEXINGTON WATER PLANT	87	47	75.1	58.4	66.7
BAD AXE	86	44	75.0	55.7	65.4	MANCHESTER	87	46	79.2	56.8	68.0
BURTON 4N	87	43	77.1	54.8	65.9	MIDLAND	84	42	73.5	56.0	64.8
CARO WWTP	87	42	76.8	55.8	66.3	OWOSSO WWTP	87	46	76.8	56.8	66.7
CASS CITY 1 SSW	86	43	75.8	54.2	65.0	PONTIAC INTL AP	86	48	77.0	59.0	68.0
CHELSEA	89	44	78.7	57.5	68.1	PONTIAC WWTP	88	48	78.1	59.5	68.8
DEARBORN	87	47	78.7	60.3	69.5	PORT AUSTIN WWTP	85	46	73.4	56.8	65.1
DEARBORN NO. 2	91	50	79.7	62.1	70.8	PORT HOPE	87	50	74.3	61.2	67.8
DETROIT CITY AP	90	52	80.6	63.9	72.3	PORT HURON	86	51	76.6	62.4	69.5
DETROIT METRO AIRPORT	86	50	79.2	61.5	70.3	RICHMOND 4 NNW	89	44	77.1	57.0	67.0
DETROIT WILLOW RUN AP	87	47	78.6	58.9	68.7	SAGINAW #3	88	49	76.5	57.2	66.9
DURAND WWTP	87	46	77.2	56.5	66.7	SAGINAW MBS INTL AP	89	48	76.8	58.4	67.6
FARMINGTON	88	46	78.3	57.4	67.8	SALINE 4SW	90	42	81.0	57.8	69.4
FILION 5NNW	87	49	75.7	57.9	66.8	TECUMSEH	89	49	79.2	58.1	68.7
FLINT 7W	85	45	75.2	56.3	65.8	WHITE LAKE 4E	87	40	77.6	54.4	66.0
FLINT FCWOS	87	42	77.8	57.0	67.4	WHITMORE LAKE 1NW	87	47	77.7	57.1	67.4



Top 20 Coldest/Warmest Augusts in Southeast Lower Michigan (°F)

Rank	Detroit Area*				Flint Bishop**				Saginaw Area***			
	Coldest		Warmest		Coldest		Warmest		Coldest		Warmest	
	Temp	Year	Temp	Year	Temp	Year	Temp	Year	Temp	Year	Temp	Year
1	65.9	1915	77.1	1995	64.7	1967	76.0	1947	64.0	1915	75.1	1937
2	66.6	1992	76.7	2016	65.0	1997	75.5	2016	64.6	1992	74.8	1947
3	66.6	1927	76.5	1947	65.2	1992	74.8	1938	65.0	1982	74.1	1959
4	66.8	1885	76.3	1959	65.2	1964	74.2	1995	65.0	1977	74.1	1955
5	66.8	1875	75.8	2018	65.3	1963	74.2	1936	65.0	1950	73.8	2021
6	67.0	1890	75.7	2021	65.5	1927	73.7	2010	65.3	1979	73.7	1995
7	67.0	1883	75.7	1955	65.6	2004	73.7	1955	65.4	1946	73.7	1969
8	67.3	1967	75.5	1900	65.9	1994	73.5	2021	65.5	1997	73.4	2016
9	67.3	1912	75.2	2010	66.0	1957	73.3	1983	65.6	2004	73.3	2010
10	67.4	1903	75.0	1988	66.3	1986	73.3	1959	65.6	1986	73.1	1936
11	67.7	1982	74.9	1938	66.3	1966	73.0	1939	65.7	1964	72.9	1938
12	67.8	1897	74.8	2005	66.4	1999	72.6	1937	65.8	1963	72.6	2018
13	67.9	1979	74.8	1918	66.4	1946	72.6	1988	66.0	1951	72.5	1932
14	68.0	1907	74.6	1916	66.5	1924	72.6	1935	66.0	1912	72.4	1931
15	68.0	1902	74.5	1906	66.6	1982	72.2	1944	66.3	1999	72.3	1998
16	68.1	1997	74.4	2022	66.6	1951	71.9	2018	66.3	1923	72.3	1918
17	68.1	1904	74.4	1993	66.8	1979	71.9	1931	66.4	1924	72.1	1930
18	68.3	1946	74.3	1944	66.8	1950	71.8	1984	66.5	1972	72.0	1973
19	68.5	2004	74.2	1953	66.9	2017	71.7	1933	66.5	1927	71.9	1988
20	68.5	1887	74.2	1881	67.2	1985	71.6	1926	66.8	1994	71.9	2020

* Detroit Area temperature records date back to January 1874.

** Flint Bishop temperature records date back to January 1921.

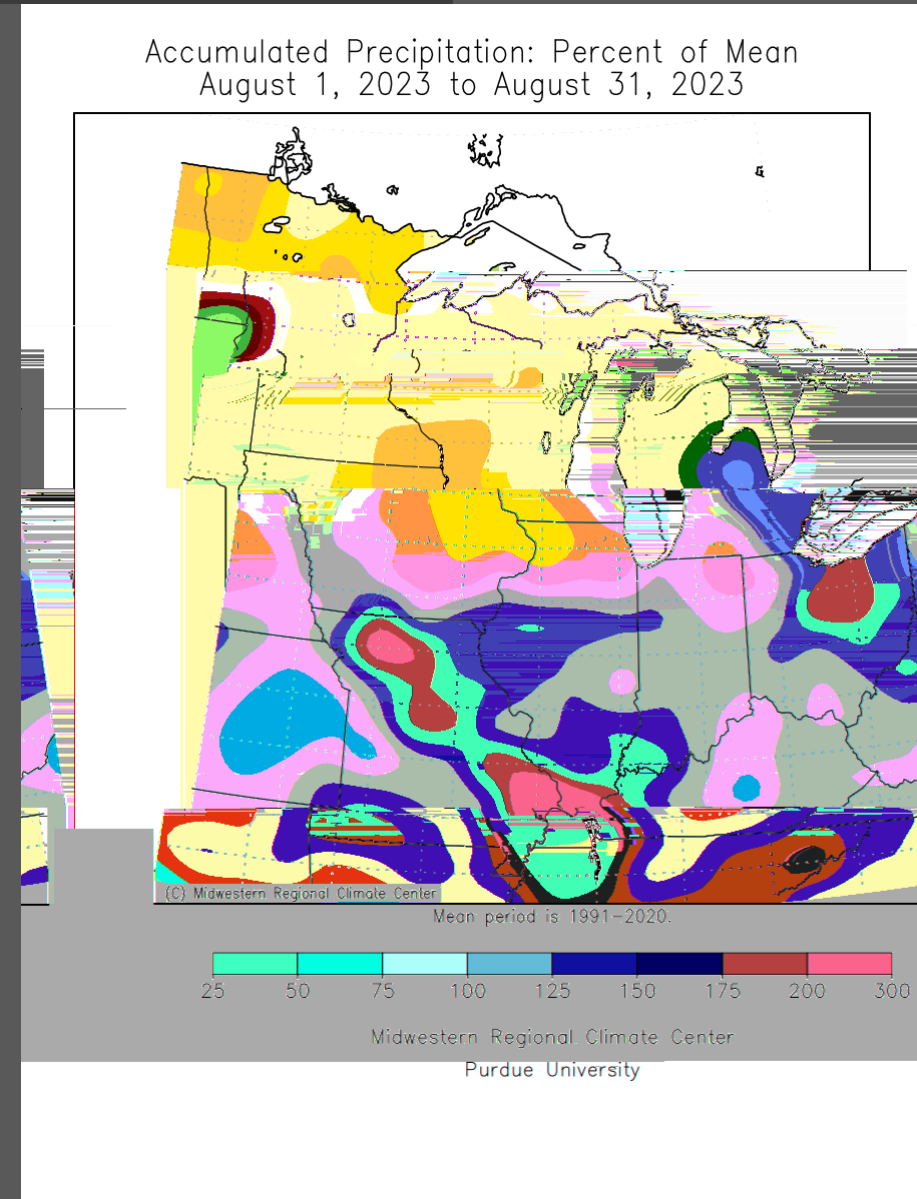
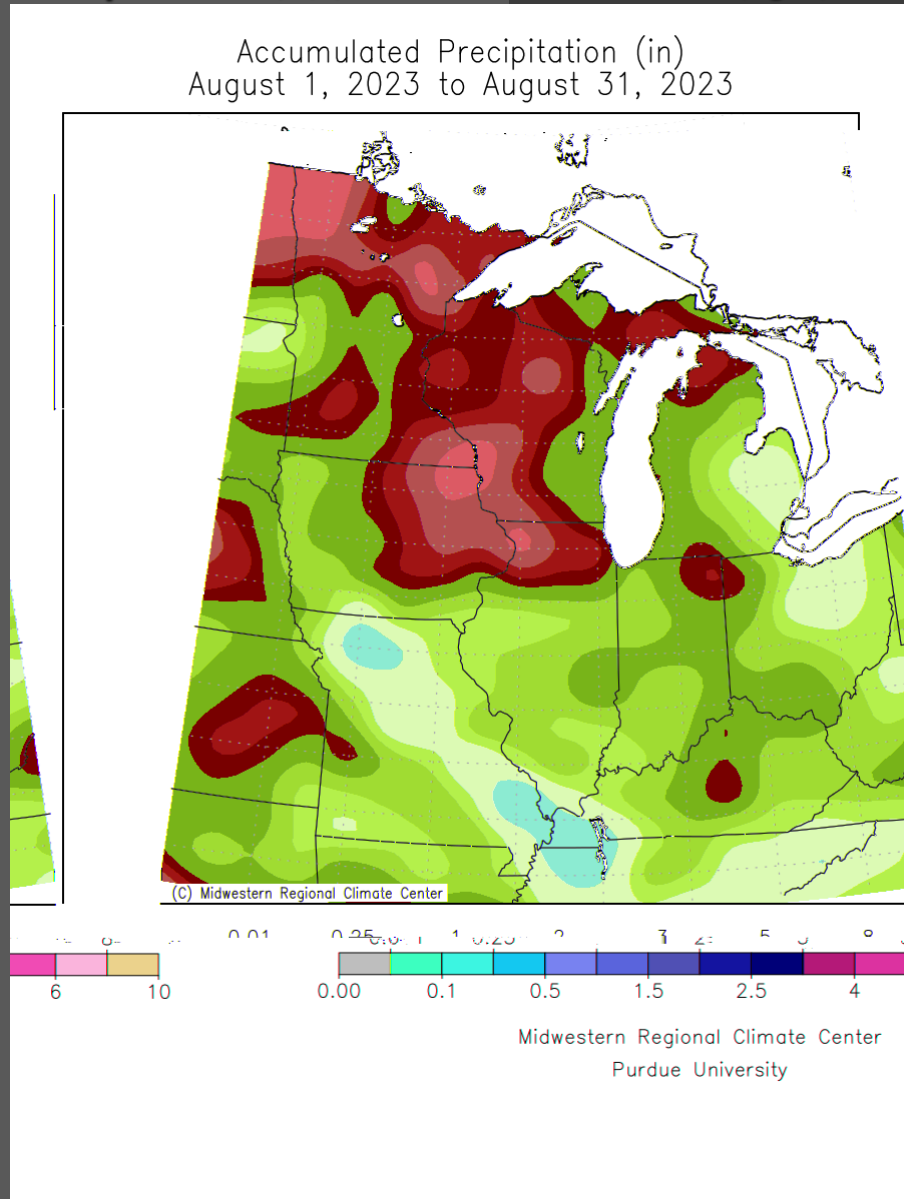
*** Saginaw Area temperature records date back to January 1912.

August 2023 – Regional Precipitation Summary

Weather Forecast Office
Detroit, MI



Total Monthly Precipitation (*left*) & Percent of Mean (*right*)



August 2023 – SE Michigan Precipitation Summary

Weather Forecast Office
Detroit, MI



Highest daily total, monthly total, and total number of days of measureable precip (in.)

Location	Highest Daily Total	Monthly Total	# of Days with Precip	Location	Highest Daily Total	Monthly Total	# of Days with Precip	Location	Highest Daily Total	Monthly Total	# of Days with Precip
ADRIAN 2 NNE	1.23	3.74	9	DETROIT METRO AIRPORT	3.50	6.50	12	MONROE 3.0 S	3.26	6.97	14
ADRIAN LENAWEE CO AP	1.03	3.02	8	DETROIT WILLOW RUN AP	5.81	8.66	9	MONROE 5.9 NW	4.65	9.03	11
ALGONAC WWTP	2.45	7.08	10	DEXTER 0.3 ENE	0.83	3.49	11	NEW BALTIMORE 0.4 SSE	3.04	10.44	11
ANN ARBOR 3.8 WNW	0.77	4.66	11	DEXTER 2.2 SE	1.17	5.05	11	OTTAWA LAKE 1.4 SSW	2.46	5.55	10
ANN ARBOR 4.5 W	1.13	5.53	11	DURAND 6.2 WNW	2.08	7.24	13	OWOSSO WWTP	2.09	6.82	17
ANN ARBOR 6.4 NNE	3.45	6.38	15	DURAND WWTP	1.82	6.26	13	PLYMOUTH 5.4 W	4.89	8.77	12
ANN ARBOR SE	2.94	6.84	12	FARMINGTON	2.21	5.94	11	PONTIAC INTL AP	3.49	7.36	11
ANN ARBOR U OF MICH	2.87	6.75	13	FARMINGTON HLS 2.4 SSW	1.16	5.38	12	PONTIAC WWTP	2.20	7.84	12
BAD AXE	2.15	5.81	12	FENTON 2.7 SSE	1.92	8.12	12	PORT HOPE	1.25	4.36	12
BAY PORT 3.2 SSW	2.11	7.81	13	FENTON 5.6 WSW	1.77	6.47	13	PORT HURON	1.36	4.67	12
BERKLEY 0.6 N	1.94	6.08	12	FENTON 6.2 WSW	1.68	5.93	12	PORT HURON 1.6 W	1.32	4.31	13
BLOOMFIELD TWP 3.1 SW	1.99	7.13	11	FILION 5NNW	2.62	5.90	11	RICHMOND 4 NNW	1.49	6.42	9
BURTON 4N	1.21	5.14	10	FLINT 7W	1.68	6.96	10	ROSEVILLE 1.7 ENE	2.49	6.06	12
CARLETON 2.5 S	6.80	10.36	12	FLINT FCWOS	1.69	5.70	10	SAGINAW 6.4 W	1.71	6.43	11
CARO WWTP	1.30	7.73	13	GOODRICH	1.66	5.81	11	SAGINAW #3	1.71	6.81	12
CASS CITY 1 SSW	2.30	7.62	10	GRAND BLANC 2.9 SE	2.25	7.73	12	SAGINAW MBS INTL AP	1.39	6.18	11
CHELSEA	0.77	3.88	11	HARBOR BEACH 1 SSE	1.30	3.70	11	SALINE 3.8 SSW	1.12	4.22	10
CHELSEA 2.4 S	0.86	4.04	11	HIGHLAND 1.3 NE	2.45	9.58	12	SALINE 4SW	1.02	5.02	11
CHELSEA 3.7 NNE	0.74	3.55	12	HOWELL 4.9 ESE	2.30	6.38	11	SHELBY 0.4 SSE	2.21	6.39	12
CHESANING	1.89	7.56	11	LAPEER 2W	0.79	5.26	18	SHELBY 2.6 SW	1.86	5.99	19
CHESTERFIELD 2.4 E	3.61	10.45	12	LAPEER WWTP	1.21	4.99	13	SOUTH LYON 2.6 SW	3.65	7.09	11
CLAWSON 0.5 S	1.92	6.83	12	LEXINGTON WATER PLANT	1.55	5.18	12	ST CHARLES 5.0 W	1.79	6.33	13
DAVISON 5.2 N	0.68	3.67	11	MANCHESTER	1.21	4.66	12	STERLING HGHTS 2.2 NNE	2.01	6.53	11
DEARBORN	1.10	4.95	9	MIDLAND	1.14	6.66	9	WATERFORD 2.1 NW	2.20	7.28	12
DEARBORN HGHTS 1.8 NW	1.24	4.80	12	MIDLAND 1.5 NNE	1.31	6.39	12	WHITE LAKE 0.5 E	2.58	10.12	11
DEARBORN NO. 2	2.47	5.65	8	MIDLAND 4.7 SSE	1.46	6.90	13	WHITE LAKE 4E	3.85	8.90	11
DETROIT CITY AP	2.12	5.15	10	MILLINGTON 3 SE	2.13	6.80	14	WYANDOTTE	1.64	5.05	12

August – Top 20 Wettest/Driest on Record

Weather Forecast Office
Detroit, MI



Top 20 Wettest/Driest Augusts in Southeast Lower Michigan (in.)

Rank	Detroit Area*				Flint Bishop**				Saginaw Area***			
	Wettest		Driest		Wettest		Driest		Wettest		Driest	
	Total	Year	Total	Year	Total	Year	Total	Year	Total	Year	Total	Year
1	8.33	1926	0.16	1894	11.18	1937	0.32	2010	9.43	2012	0.27	1927
2	7.83	1975	0.19	1889	11.04	1975	0.41	1927	9.04	1995	0.63	1969
3	7.51	1940	0.27	2008	8.68	1956	0.45	1969	9.01	1975	0.68	1957
4	7.29	1877	0.43	1996	7.69	2018	0.54	1930	8.02	2018	0.68	1930
5	7.07	1959	0.52	1929	6.93	1961	0.65	1929	7.15	1914	0.81	1954
6	6.87	1987	0.59	2010	5.86	1921	0.68	1996	6.73	2007	0.93	1982
7	6.61	2007	0.60	1902	5.70	2023	0.81	1976	6.72	1987	1.00	2003
8	6.53	1956	0.62	1907	5.56	1989	0.93	2005	6.25	1940	1.00	1929
9	6.50	2023	0.62	1899	5.47	2009	1.08	1931	6.18	2023	1.04	1935
10	6.32	2014	0.72	1982	5.35	1968	1.19	1957	5.95	1913	1.13	1933
11	6.09	1980	0.84	1931	5.29	1986	1.26	1948	5.88	2016	1.15	1984
12	6.04	1875	0.90	1930	5.28	1942	1.38	1962	5.66	1955	1.25	1916
13	5.99	2020	0.90	1883	5.26	1959	1.51	2002	5.51	1938	1.29	1996
14	5.98	2013	1.06	1969	5.15	2021	1.54	2001	5.50	2015	1.30	1971
15	5.87	1964	1.06	1927	5.09	2007	1.62	1971	5.46	1981	1.37	2005
16	5.62	2016	1.07	1936	5.03	1987	1.64	1938	5.34	1926	1.37	1980
17	5.51	1880	1.11	1910	4.94	1926	1.65	1936	5.28	1915	1.41	1948
18	5.27	1888	1.12	1943	4.90	2016	1.76	1973	5.19	1977	1.43	1934
19	5.17	2021	1.20	2018	4.83	1995	1.76	1928	5.18	1972	1.46	1970
20	5.12	1961	1.29	1918	4.57	1972	1.81	1923	5.05	1956	1.51	1998

* Detroit Area precipitation records date back to November 1874.

** Flint Bishop precipitation records date back to January 1921.

*** Saginaw Area precipitation records date back to January 1912.

August 2023 – Significant Weather Events

Weather Forecast Office
Detroit, MI



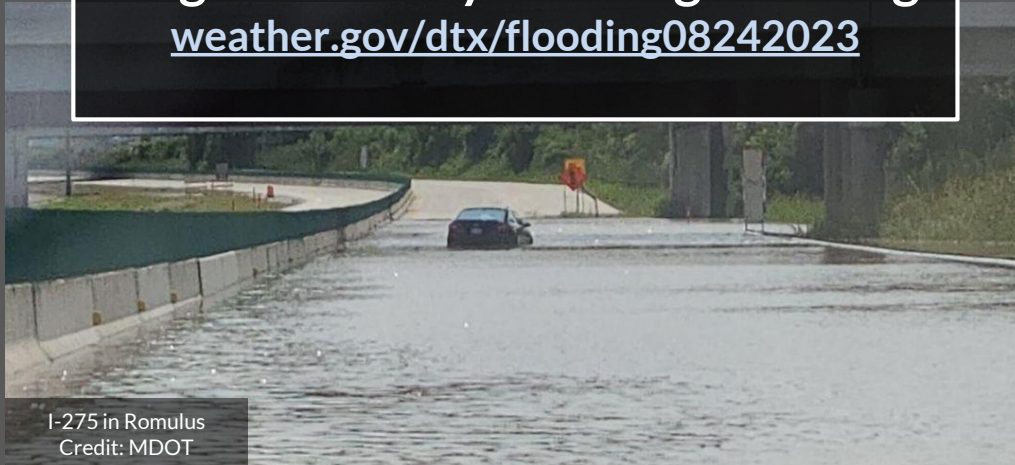
Follow links for web summaries

August 11 Perry Tornado [weather.gov/dtx/Perry tornado 2023](https://weather.gov/dtx/Perry_tornado_2023)



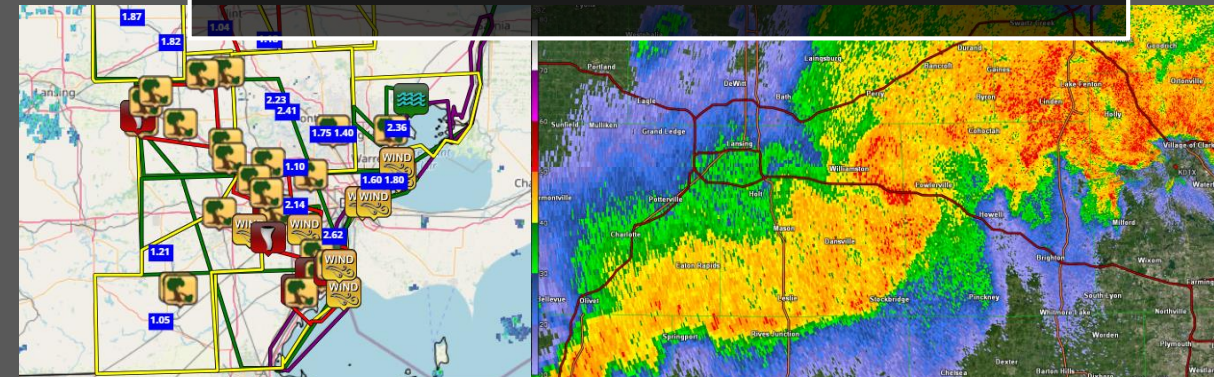
Perry
Credit: Bill Bouwman

August 24 Early Morning Flooding weather.gov/dtx/flooding08242023



I-275 in Romulus
Credit: MDOT

August 24 Evening Tornado Outbreak weather.gov/dtx/tornadoes08242023





NOWData Observed Weather Climate Prediction and Variability Local Data/Records Climate Resources

NOWData - NOAA Online Weather Data

1. Location » 2. Product » 3. Options » 4. View »

View map

Detroit Area
Flint Area
Saginaw Area
Adrian 2 Nne, MI
Ann Arbor Univ O, MI
Bad Axe, MI
Caro Wwtp, MI
Chelsea, MI
Detroit City Ap, MI
Detroit Metropol, MI

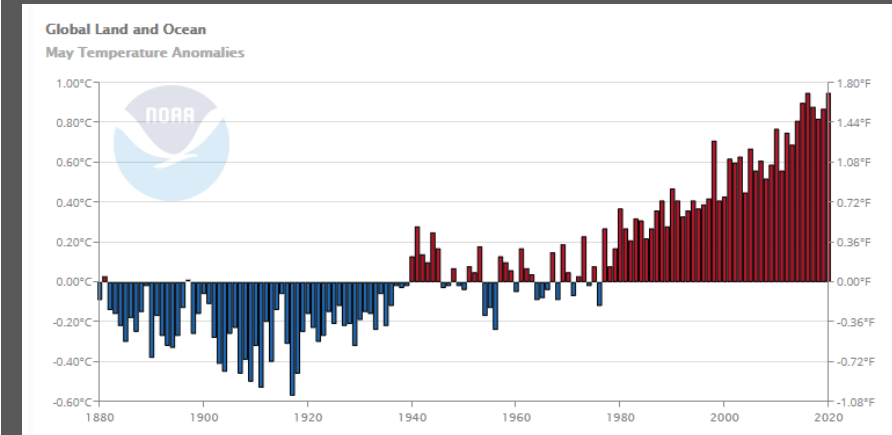
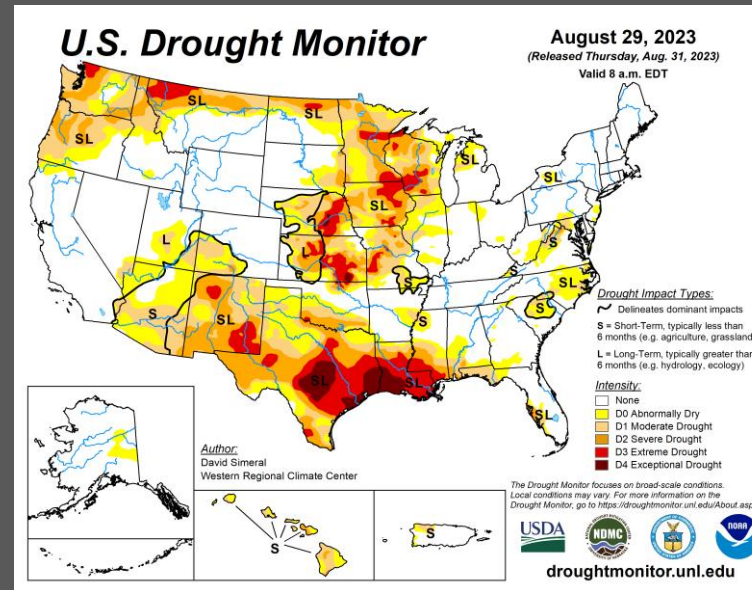
Daily data for a month
Date: 2021-08

Daily almanac
 Monthly summarized data
 Calendar day summaries
 Daily/monthly normals
 Climatology for a day
 First/last dates
 Temperature graphs
 Accumulation graphs

Product Description:
DAILY DATA FOR A MONTH - daily maximum, minimum and average temperature (degrees F), average temperature departure from normal (degrees F), heating and cooling degree days (base 65), precipitation, snowfall and snow depth (inches) for all days of the selected month. Basic monthly summary statistics are also provided.

Powered by **CACIS**
10/22 Regional Climate Centers

The Applied Climate Information System (ACIS) is a joint project of the Regional Climate Centers, the National Centers for Environmental Information (NCEI) and the National Weather Service. Official data and data for additional locations are available from the Regional Climate Centers and NCEI.



SE Michigan Climate Products

weather.gov/wrh/climate?wfo=dtx

U.S. Drought Monitor

drought.gov/drought/data-maps-tools/current-conditions

NOAA NCEI Climate at a Glance

ncdc.noaa.gov/cag/

Thank you to our COOP and CoCoRaHS volunteer weather observers!