

# Southeast Michigan Climate Summary

## Monthly Temperature, Precipitation, and Severe Weather Summaries

Weather Forecast Office  
Detroit, MI

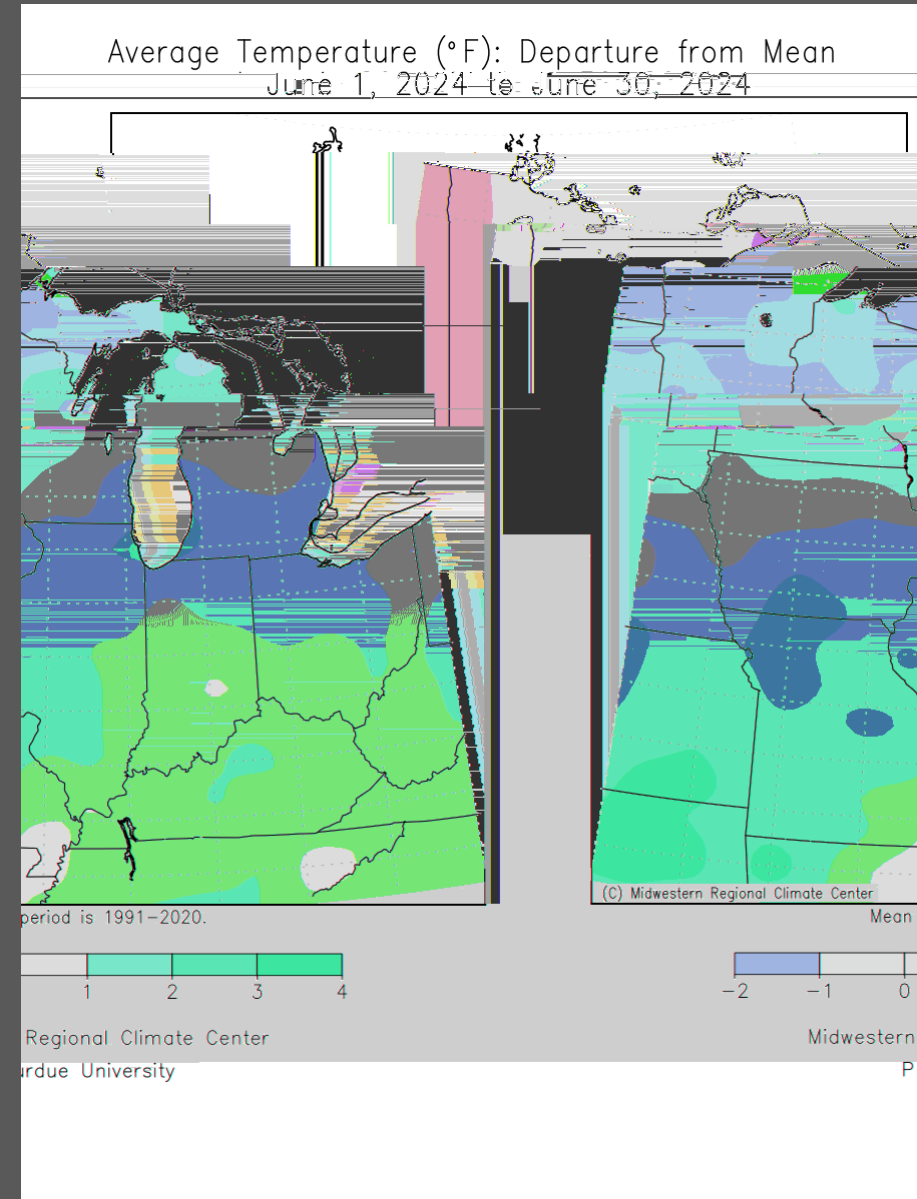
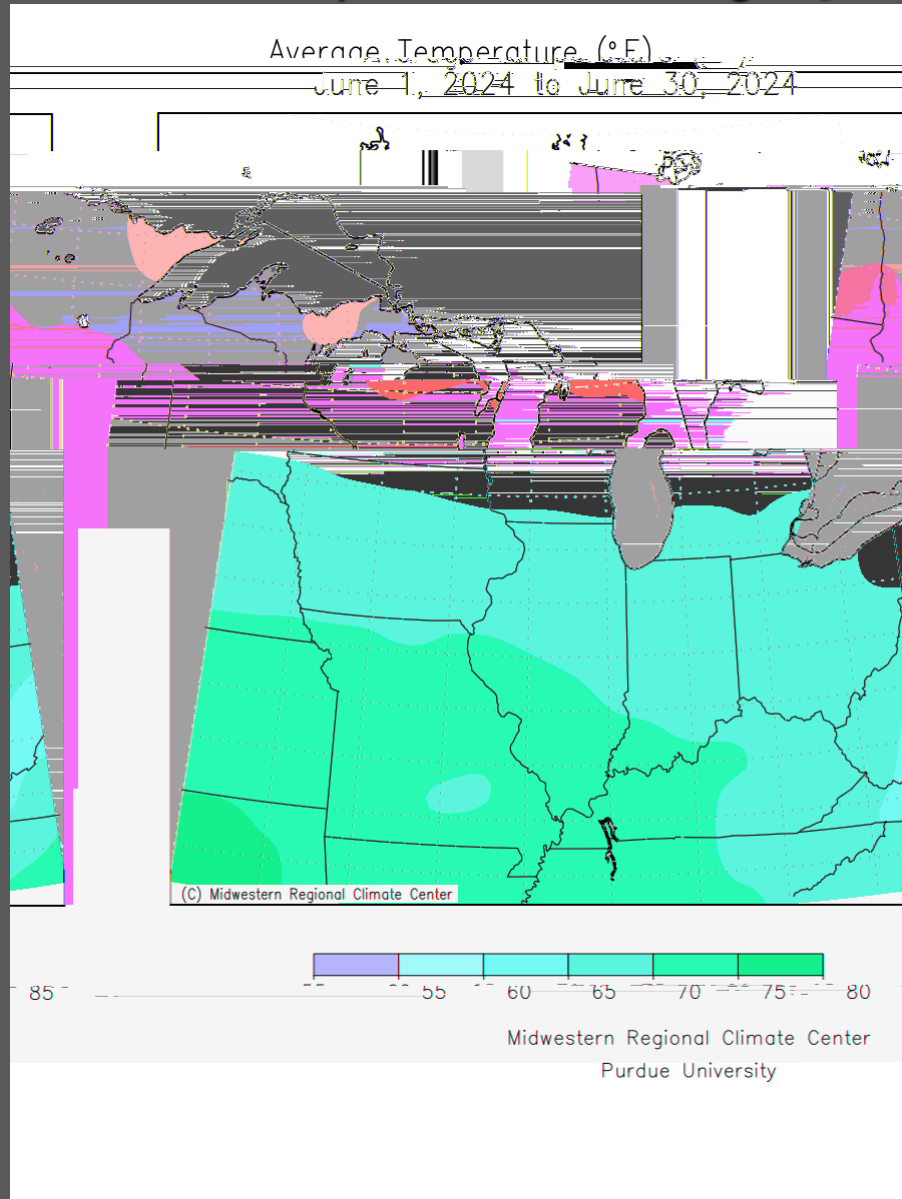


# June 2024 – Regional Temperature Summary

Weather Forecast Office  
Detroit, MI



Average Temperature (left) & Departure from Average (right)



# June 2024 – SE Michigan Temperature Summary

Weather Forecast Office  
Detroit, MI

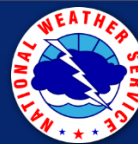


## Warmest, Coldest, and Averages (°F)

Location	Highest Temp	Lowest Temp	Avg High	Avg Low	Monthly Avg	Location	Highest Temp	Lowest Temp	Avg High	Avg Low	Monthly Avg
ADRIAN 2 NNE	94	45	82.1	59.4	70.8	<b>FLINT FCWOS</b>	<b>92</b>	<b>42</b>	<b>80.4</b>	<b>59.0</b>	<b>69.7</b>
ADRIAN LENAWEE CO AP	96	50	82.9	62.2	72.6	GOODRICH	89	43	78.1	57.5	67.8
ALGONAC WWTP	95	42	82.4	58.0	70.2	GROSSE POINTE FARMS	99	46	81.9	62.1	72.0
ANN ARBOR MUNICIPAL AP	92	38	80.8	56.0	68.4	HARBOR BEACH 1 SSE	92	44	73.3	56.9	65.1
ANN ARBOR SE	92	42	81.4	57.1	69.3	LAPEER 2W	92	41	80.1	57.7	68.9
ANN ARBOR U OF MICH	93	39	82.2	57.4	69.8	LAPEER WWTP	92	43	80.5	58.0	69.2
BAD AXE	92	42	77.3	56.6	67.0	LEXINGTON WATER PLANT	91	40	76.9	57.0	66.9
BURTON 4N	92	41	79.7	56.2	67.9	MANCHESTER	94	44	82.1	57.0	69.6
CARO WWTP	92	42	79.9	57.3	68.6	MIDLAND	88	40	75.0	57.3	66.2
CASS CITY 1 SSW	90	41	78.3	55.8	67.1	MORENCI	96	49	82.5	59.8	71.1
CHELSEA	93	43	81.0	59.4	70.2	OWOSSO WWTP	92	44	79.7	58.0	68.8
DEARBORN	92	44	81.1	61.0	71.1	PONTIAC INTL AP	91	44	79.9	59.3	69.6
DEARBORN NO. 2	95	48	82.3	63.6	72.9	PONTIAC WWTP	93	44	80.7	59.8	70.2
DETROIT CITY AP	96	48	83.3	64.2	73.8	PORT HOPE	93	45	75.0	59.7	67.3
<b>DETROIT METRO AIRPORT</b>	<b>95</b>	<b>48</b>	<b>81.7</b>	<b>62.5</b>	<b>72.1</b>	PORT HURON	91	46	78.9	61.1	70.0
DETROIT WILLOW RUN AP	94	45	82.0	60.3	71.2	RICHMOND 4 NNW	94	42	80.1	58.4	69.2
DUNDEE	96	46	82.1	60.4	71.2	SAGINAW #3	93	45	80.7	59.1	69.9
DURAND WWTP	91	42	79.8	57.6	68.4	<b>SAGINAW MBS INTL AP</b>	<b>94</b>	<b>44</b>	<b>80.3</b>	<b>60.0</b>	<b>70.2</b>
ECN DETROIT	97	46	82.7	62.1	72.4	SALINE 4SW	96	43	82.7	57.9	70.3
FARMINGTON	94	42	81.0	57.6	69.3	WHITE LAKE 4E	91	39	79.5	56.3	67.9
FILION 5NNW	92	45	77.4	58.2	67.8	WHITMORE LAKE 1NW	91	43	80.3	58.1	69.2
FLINT 7W	89	43	78.1	58.3	68.2						

# June – Top 20 Coldest/Warmest on Record

Weather Forecast Office  
Detroit, MI



## Top 20 Coldest/Warmest Junes in Southeast Lower Michigan (°F)

Rank	Detroit Area*				Flint Bishop**				Saginaw Area***			
	Coldest		Warmest		Coldest		Warmest		Coldest		Warmest	
	Temp	Year	Temp	Year	Temp	Year	Temp	Year	Temp	Year	Temp	Year
1	62.8	1985	74.6	1933	60.1	1969	75.0	1933	60.6	1982	73.8	1933
2	62.8	1903	74.1	2005	60.9	1958	74.9	1934	61.0	1926	73.5	1919
3	63.1	1915	74.0	1919	61.5	1980	72.1	1949	61.5	1915	72.3	1971
4	63.4	1928	73.3	1949	62.5	1985	71.7	1925	61.8	1958	72.3	1934
5	63.4	1926	73.2	1934	62.5	1972	71.5	1921	61.9	1917	71.7	2005
6	63.4	1916	72.8	2021	62.9	1982	71.4	2020	62.1	1980	71.1	2021
7	63.6	1927	72.8	1943	63.1	1977	71.3	1943	62.1	1916	70.5	1976
8	63.7	1980	72.7	1952	63.3	1960	71.2	2005	62.3	1945	70.5	1931
9	63.7	1889	72.4	1991	63.4	1928	70.3	1952	62.6	1928	70.4	1949
10	63.8	1878	72.3	2012	63.6	1945	70.3	1987	62.7	1977	70.3	1967
11	63.9	1958	72.2	1994	63.8	1927	70.3	1939	62.8	1985	70.2	2024
12	63.9	1902	72.1	2024	64.2	1992	70.1	2021	63.2	1947	70.2	1932
13	64.1	1917	71.6	1995	64.5	1947	69.8	1931	63.5	1969	70.0	1995
14	64.2	1982	71.6	1890	64.6	2003	69.8	1923	63.7	1972	69.9	2007
15	64.2	1972	71.5	2018	64.7	1961	69.7	2016	63.8	1927	69.9	1923
16	64.4	1881	71.5	1944	64.9	1986	69.7	2024	64.2	1940	69.9	1930
17	64.6	1935	71.4	2010	64.9	2009	69.7	1991	64.2	1978	69.9	1921
18	64.6	1897	71.4	1921	64.9	1974	69.6	1954	64.2	1924	69.8	2012
19	64.7	1969	71.3	2007	65.1	1978	69.6	1932	64.3	1918	69.8	1987
20	64.8	1907	71.3	1954	65.1	1948	69.5	1971	64.4	1986	69.7	2014

\* Detroit Area temperature records date back to January 1874.

\*\* Flint Bishop temperature records date back to January 1921.

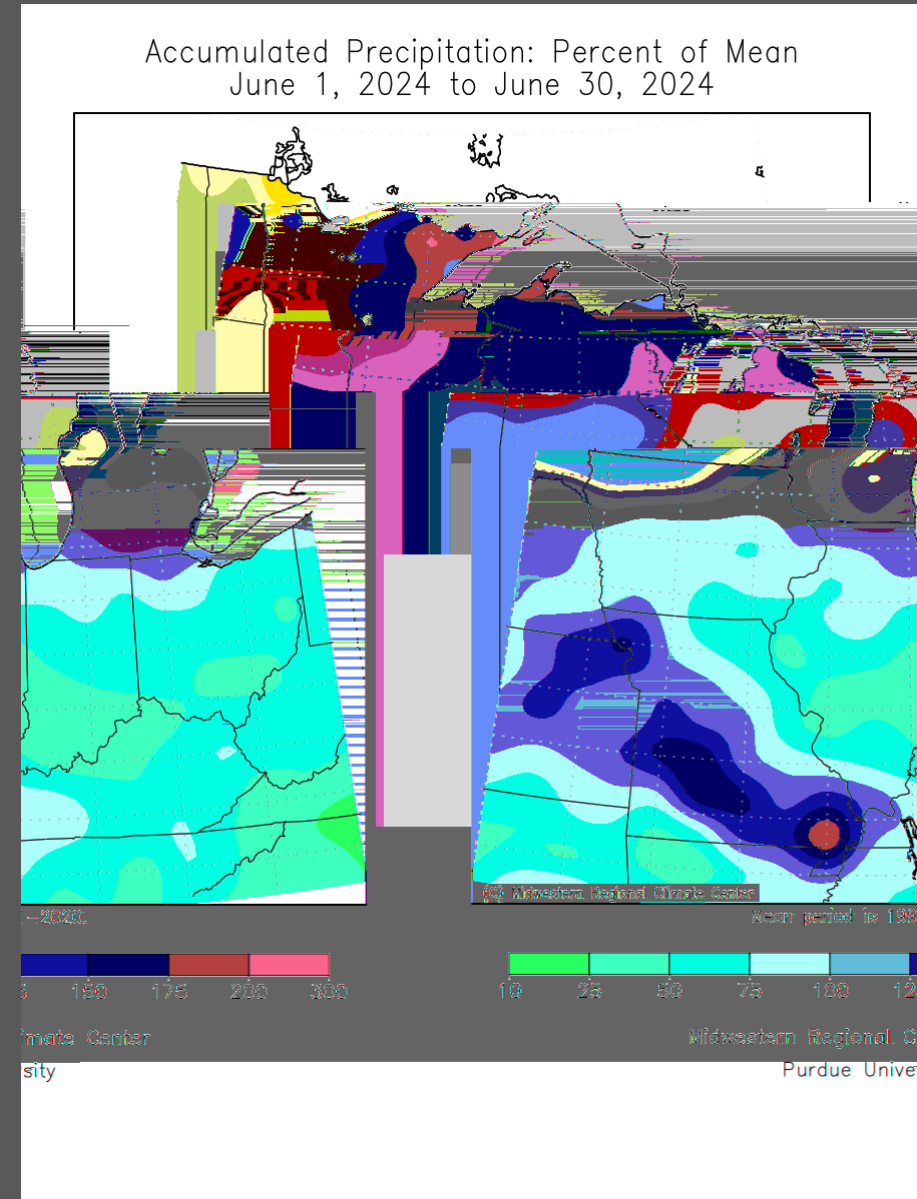
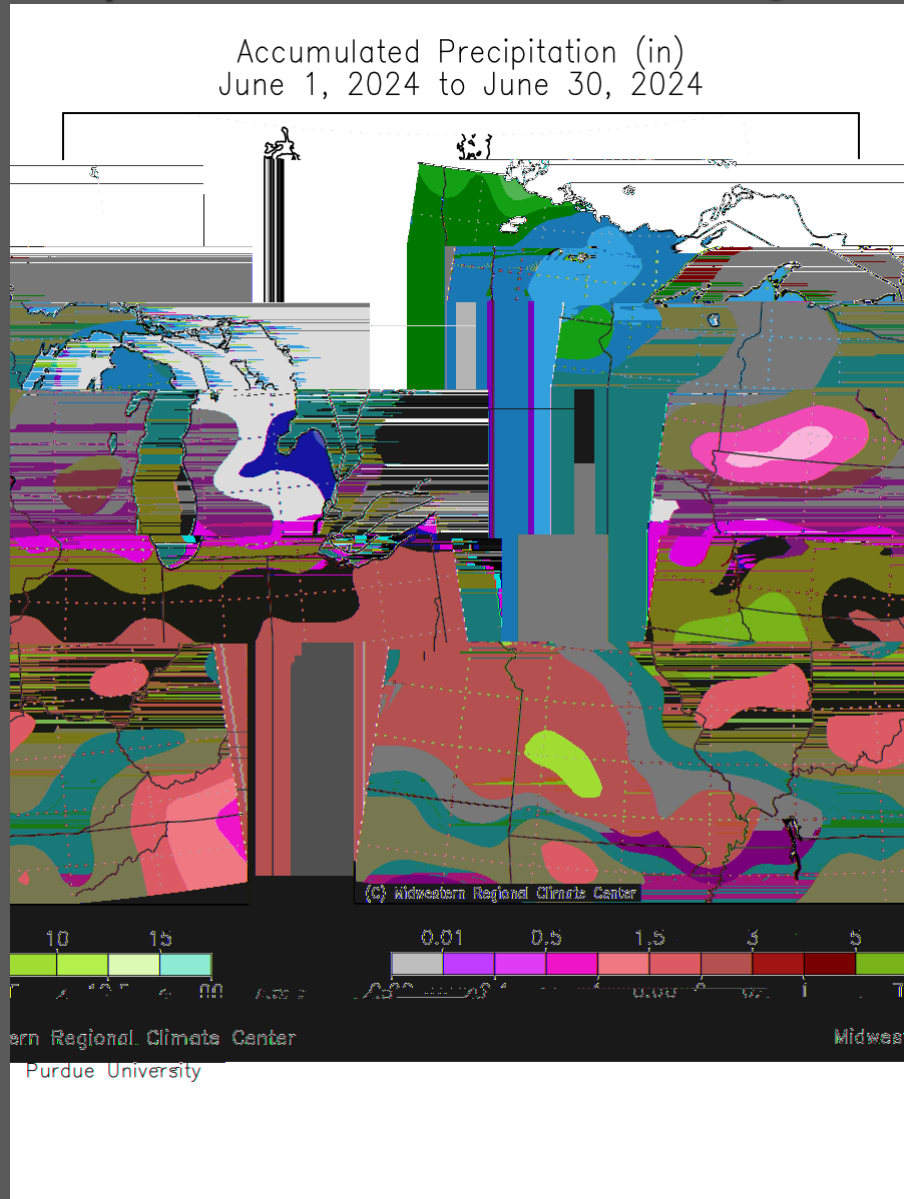
\*\*\* Saginaw Area temperature records date back to January 1912.

# June 2024 – Regional Precipitation Summary

Weather Forecast Office  
Detroit, MI



Total Monthly Precipitation (*left*) & Percent of Mean (*right*)



# June 2024 – SE Michigan Precipitation Summary

Weather Forecast Office  
Detroit, MI



Highest daily total, monthly total, and total number of days of measureable precip (in.)

Location	Highest Daily Total	Monthly Total	# of Days with Precip	Location	Highest Daily Total	Monthly Total	# of Days with Precip	Location	Highest Daily Total	Monthly Total	# of Days with Precip
ADRIAN 2 NNE	0.71	3.90	15	DETROIT CITY AP	1.06	3.70	12	LIVONIA 2.3 NNW	1.11	5.72	15
ADRIAN LENAWEE CO AP	0.58	3.04	9	<b>DETROIT METRO AIRPORT</b>	<b>1.02</b>	<b>3.83</b>	<b>12</b>	MANCHESTER	1.40	4.76	11
ALGONAC WWTP	1.50	7.37	15	DETROIT WILLOW RUN AP	1.20	4.21	10	MIDLAND	0.75	2.98	11
ANN ARBOR 3.0 SE	1.50	5.29	12	DEXTER 0.3 ENE	1.60	4.62	13	MIDLAND 4.4 SW	0.57	2.63	13
ANN ARBOR 3.8 WNW	1.35	4.37	11	DEXTER 2.2 SE	1.16	5.29	14	MONROE 3.0 S	0.45	2.51	13
ANN ARBOR 4.5 W	0.91	4.47	16	DUNDEE	0.73	3.71	14	MORENCI	0.68	2.56	10
ANN ARBOR 7.1 W	1.36	5.28	15	DURAND 6.2 WNW	0.90	3.90	13	NEW BALTIMORE 0.4 SSE	1.41	6.63	16
ANN ARBOR MNCPL AP	1.20	4.45	12	DURAND WWTP	0.85	3.58	13	ORTONVILLE 2.3 S	0.99	3.83	12
ANN ARBOR SE	0.95	5.56	13	EASTPOINTE 1.2 SSW	0.80	4.91	14	OTTAWA LAKE 1.4 SSW	0.57	2.95	11
ANN ARBOR U OF MICH	1.76	6.60	13	ECN DETROIT	1.10	4.16	13	OWOSSO WWTP	1.17	4.74	13
BAD AXE	0.49	2.48	16	FARMINGTON	1.98	5.67	13	PLYMOUTH 5.4 W	1.13	5.81	15
BAY PORT 3.2 SSW	0.67	2.52	15	FENTON 2.7 SSE	1.08	4.10	13	PONTIAC INTL AP	1.13	4.42	12
BERKLEY 0.6 N	1.35	7.13	14	FENTON 5.6 WSW	1.52	4.48	11	PONTIAC WWTP	1.32	4.35	12
BLOOMFIELD TWP 3.1 SW	1.20	5.40	14	FENTON 6.2 WSW	1.43	4.16	11	PORT HOPE	1.10	3.12	16
BRIGHTON 1.1 E	1.80	4.95	10	FLINT 7W	0.74	4.26	14	PORT HURON	0.62	2.35	10
BURTON 4N	1.05	4.35	13	<b>FLINT FCWOS</b>	<b>0.50</b>	<b>2.70</b>	<b>13</b>	PORT HURON 2.8 WSW	0.58	2.82	10
CANTON 2.7 N	0.90	5.60	16	GOODRICH	0.81	3.69	13	RICHMOND 4 NNW	0.94	3.88	13
CARLETON 2.5 S	1.80	4.40	14	GROSSE POINTE FARMS	0.70	4.29	16	ROSEVILLE 1.7 ENE	1.86	5.88	13
CARO WWTP	0.65	4.18	17	HARBOR BEACH 1 SSE	0.49	2.40	14	SAGINAW 6.4 W	1.83	5.76	13
CASS CITY 1 SSW	0.46	2.73	14	HIGHLAND 1.3 NE	0.64	3.03	10	<b>SAGINAW MBS INTL AP</b>	<b>0.74</b>	<b>2.38</b>	<b>12</b>
CHELSEA	1.84	6.30	11	HOWELL 3.7 WSW	1.15	3.99	11	SALINE 4SW	1.07	4.79	14
CHELSEA 2.4 S	1.35	5.51	11	HOWELL 4.9 ESE	1.10	3.64	10	SHELBY 0.4 SSE	1.25	5.70	14
CHELSEA 3.7 NNE	1.80	5.22	10	LAPEER 2W	0.76	3.56	15	SHELBY 2.6 SW	1.52	5.67	15
CHESANING	1.59	5.16	11	LAPEER WWTP	1.06	3.84	14	SOUTH LYON 2.6 SW	2.04	5.24	11
CHESTERFIELD 2.4 E	1.61	6.80	16	LEXINGTON WATER PLANT	0.78	3.31	13	ST CHARLES 5.0 W	1.09	4.25	16
CLINTON 0.5 NE	0.67	3.73	12	LINDEN 6.5 SW	1.48	4.75	14	WHITE LAKE 0.5 E	0.67	3.01	11
DAVISON 5.2 N	0.39	2.44	12	LINDEN WWTP	0.97	3.85	18	WHITE LAKE 4E	0.86	3.81	12
DEARBORN HGHTS 1.8 NW	0.69	4.84	17	LIVONIA 2.0 NE	1.50	5.36	11	WYANDOTTE	0.68	3.48	12
DEARBORN NO. 2	0.59	3.41	11								

# June – Top 20 Wettest/Driest on Record

Weather Forecast Office  
Detroit, MI



## Top 20 Wettest/Driest Junes in Southeast Lower Michigan (in.)

Rank	Detroit Area*				Flint Bishop**				Saginaw Area***			
	Wettest		Driest		Wettest		Driest		Wettest		Driest	
	Total	Year	Total	Year	Total	Year	Total	Year	Total	Year	Total	Year
1	8.31	1892	0.55	1895	6.57	2009	0.63	1988	10.76	2017	0.61	1988
2	7.04	1987	0.94	2011	6.52	1994	0.67	2016	6.92	1996	0.64	1952
3	6.97	1902	0.97	1988	6.40	2021	0.72	1995	5.82	1928	0.76	1912
4	6.97	1896	1.01	1959	5.87	1949	0.79	1933	5.65	2008	1.03	1927
5	6.58	1960	1.04	1984	5.58	1943	0.83	2012	5.15	1967	1.19	1956
6	6.42	1980	1.06	1952	5.48	2019	0.90	1952	5.09	1935	1.23	1925
7	6.32	1903	1.07	2002	5.46	2015	0.92	1984	5.05	2021	1.38	1918
8	6.05	1993	1.08	1904	5.40	1968	1.14	1959	4.93	1917	1.39	1964
9	6.01	2013	1.19	1933	5.37	1928	1.19	1932	4.92	1994	1.48	1959
10	5.90	1881	1.30	2016	5.36	1967	1.25	1998	4.83	1987	1.50	1991
11	5.75	1986	1.31	2012	5.31	1962	1.37	1925	4.75	1915	1.53	1990
12	5.49	1920	1.35	1932	5.23	1993	1.48	2002	4.71	1976	1.53	1923
13	5.46	1999	1.39	1934	5.13	1986	1.54	1985	4.67	1954	1.55	1997
14	5.42	2010	1.42	1913	4.90	1989	1.57	1997	4.62	1948	1.57	1929
15	5.32	2015	1.46	1922	4.82	1948	1.57	1934	4.56	2011	1.62	1941
16	5.27	2009	1.47	1910	4.70	1977	1.60	1987	4.49	2010	1.65	2006
17	5.24	1906	1.48	1911	4.68	1975	1.62	1923	4.44	2019	1.70	1934
18	5.16	2021	1.51	1876	4.56	1940	1.66	1978	4.41	1943	1.73	1966
19	5.15	1898	1.55	1995	4.51	2013	1.66	1922	4.37	1945	1.75	1963
20	4.99	1968	1.61	1956	4.44	1945	1.77	1927	4.22	1939	1.77	2016

\* Detroit Area precipitation records date back to November 1874.

\*\* Flint Bishop precipitation records date back to January 1921.

\*\*\* Saginaw Area precipitation records date back to January 1912.

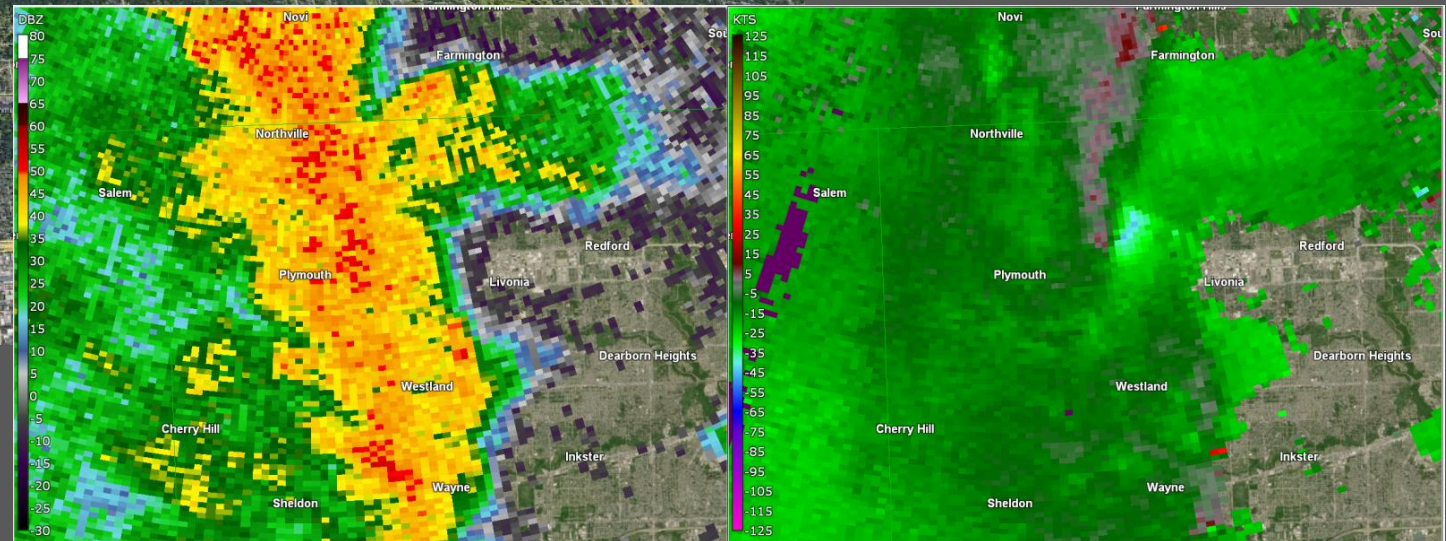
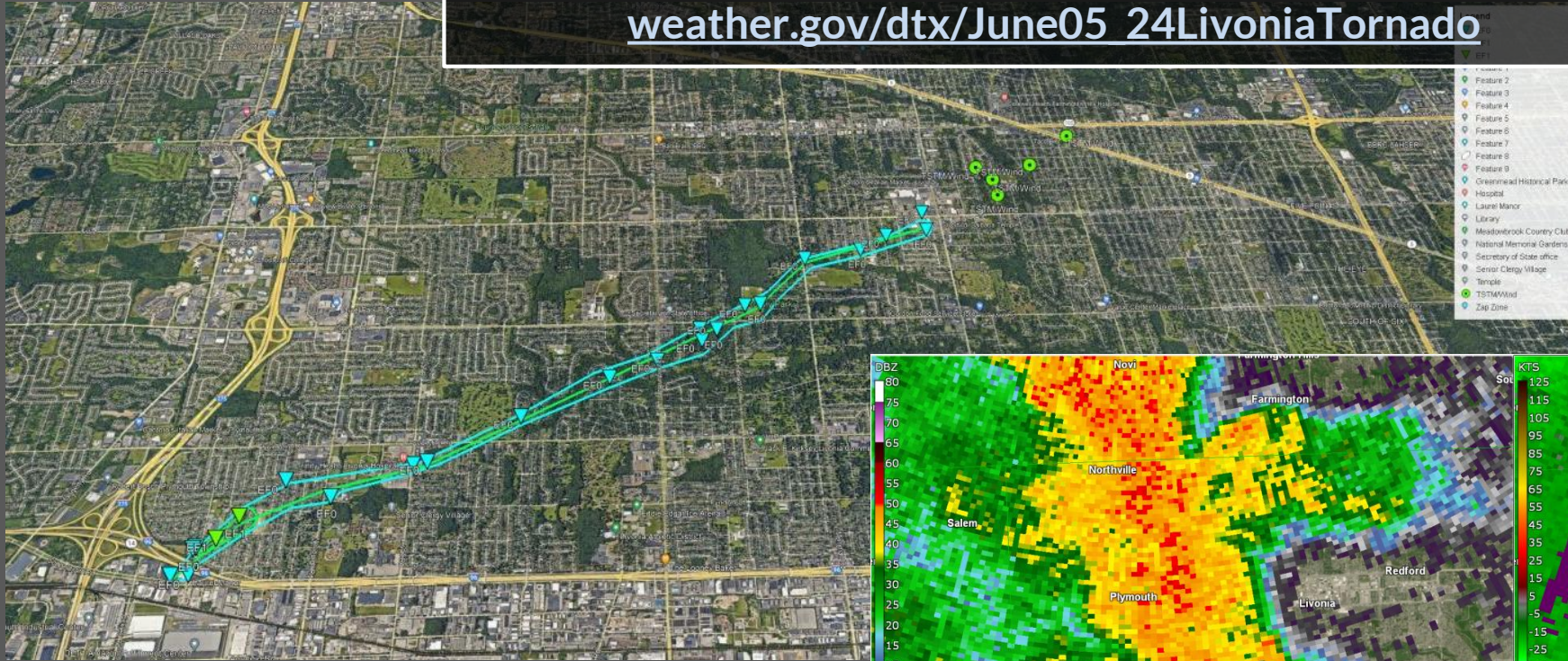
# June 2024 – Significant Weather Events

Follow links for web summaries



## June 5 Livonia Tornado

[weather.gov/dtx/June05\\_24LivoniaTornado](https://weather.gov/dtx/June05_24LivoniaTornado)







NOWData | Observed Weather | Climate Prediction and Variability | Local Data/Records | Climate Resources

### NOWData - NOAA Online Weather Data

1. Location » 2. Product » 3. Options » 4. View »

**View map**

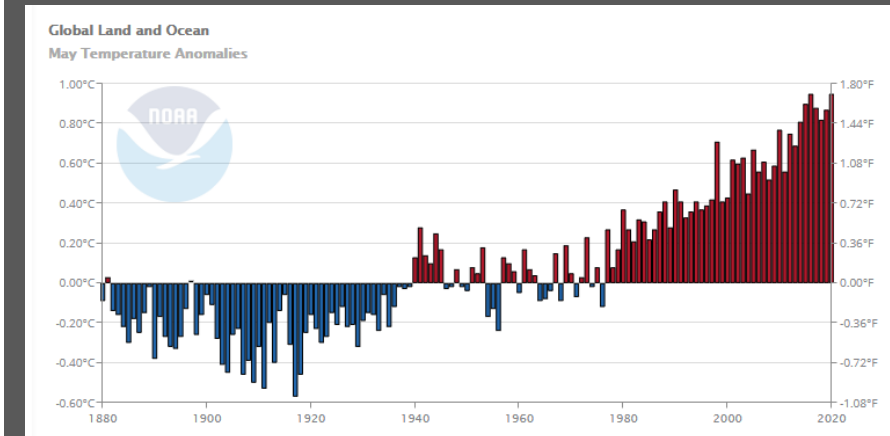
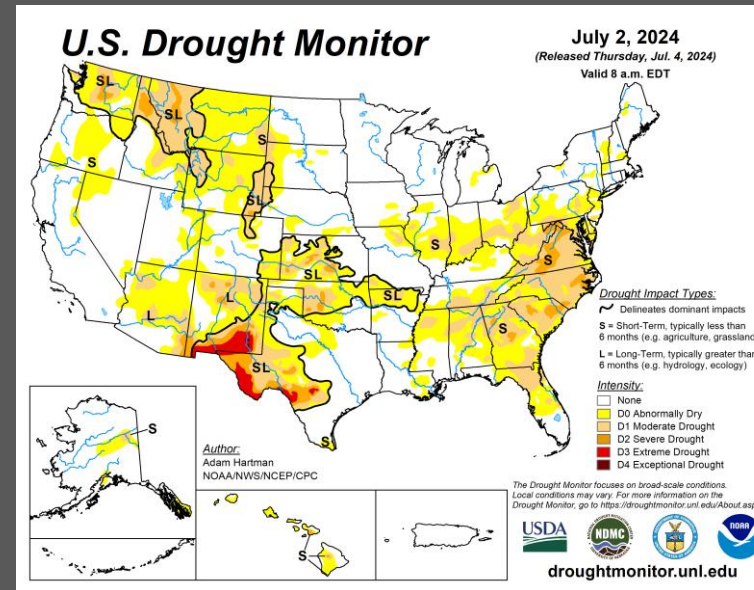
- ☑ Daily data for a month
- ☐ Daily almanac
- ☐ Monthly summarized data
- ☐ Calendar day summaries
- ☐ Daily/monthly normals
- ☐ Climatology for a day
- ☐ First/last dates
- ☐ Temperature graphs
- ☐ Accumulation graphs

Date: 2021-08

**Product Description:**  
DAILY DATA FOR A MONTH - daily maximum, minimum and average temperature (degrees F), average temperature departure from normal (degrees F), heating and cooling degree days (base 65), precipitation, snowfall and snow depth (inches) for all days of the selected month. Basic monthly summary statistics are also provided.

Powered by **CACIS**  
10/22 Regional Climate Centers

The Applied Climate Information System (ACIS) is a joint project of the Regional Climate Centers, the National Centers for Environmental Information (NCEI) and the National Weather Service. Official data and data for additional locations are available from the Regional Climate Centers and NCEI.



**SE Michigan Climate Products**

[weather.gov/wrh/climate?wfo=dtx](https://weather.gov/wrh/climate?wfo=dtx)

**U.S. Drought Monitor**

[drought.gov/current-conditions](https://drought.gov/current-conditions)

**NOAA NCEI Climate at a Glance**

[ncei.noaa.gov/access/monitoring/climate-at-a-glance/](https://ncei.noaa.gov/access/monitoring/climate-at-a-glance/)

Thank you to our [COOP](#) and [CoCoRaHS](#) volunteer weather observers!