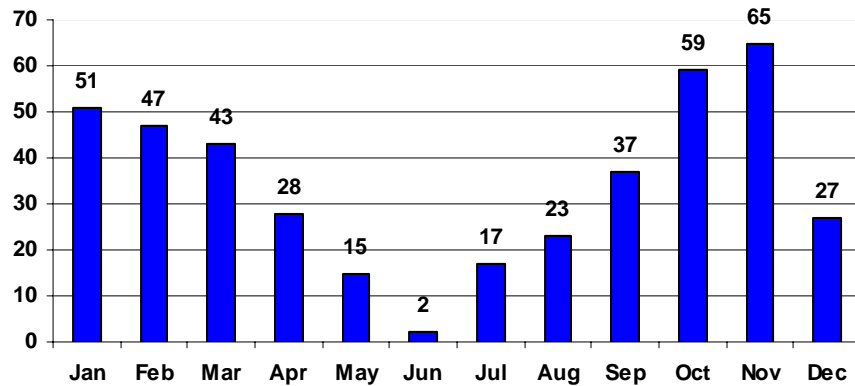


Flash Floods in Hawaii

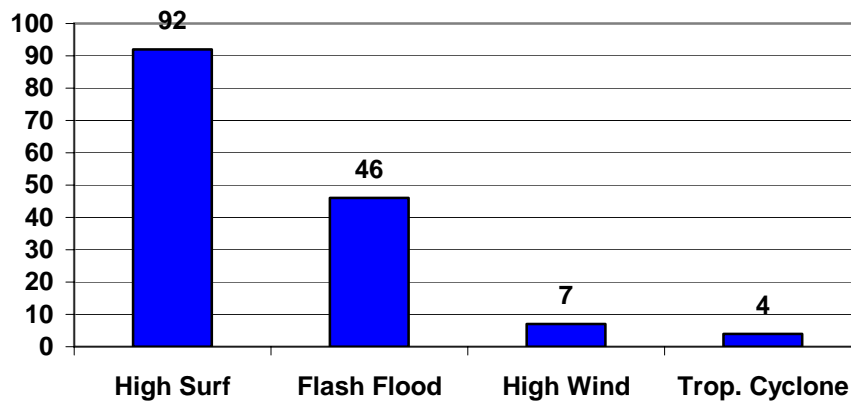
Event Statistics

Flash Flood Events
1960 through 2005

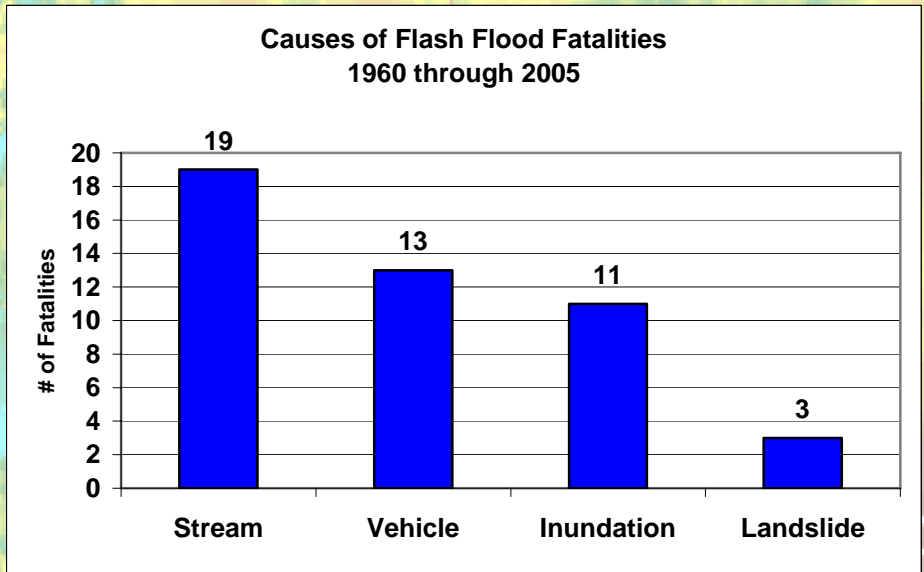


Flash floods in Hawaii can occur during any month of the year. Since 1960, flash flood events have been recorded an average of eight times per year. However, these events are most frequent during the Hawaiian wet season, which runs from October through April. The graph at left shows the months of October and November containing the highest flash flood event frequency.

Weather Fatalities
1960 through 2005

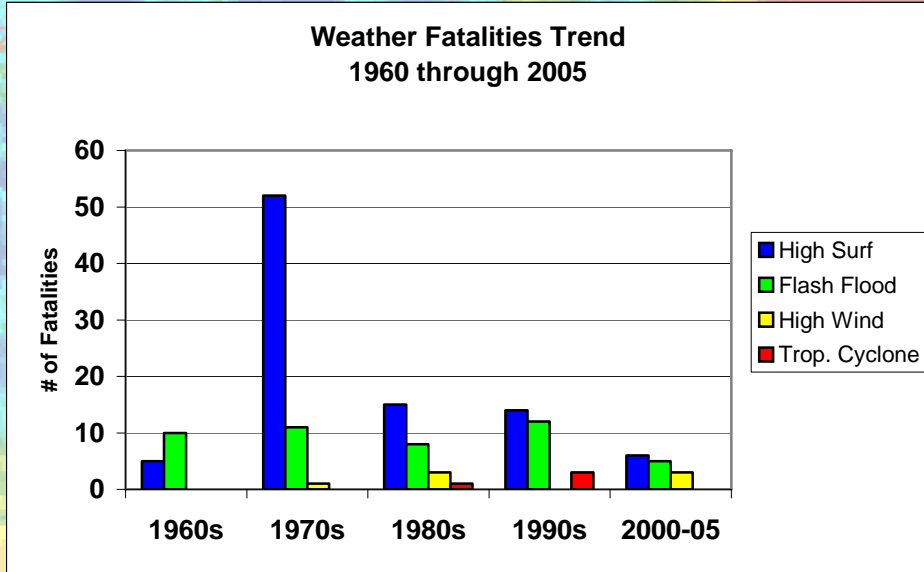


Flash floods are the leading cause of *direct* weather-related deaths in the State of Hawaii, far exceeding the toll caused by high wind events and tropical cyclones. Although high surf causes the most weather-related deaths in the Hawaiian Islands, these events are considered to be indirect weather impacts since the waves are often formed far from the island chain.



In the graph at left, the “stream” category encompasses flash flood deaths involving people who cross or fall into flooded streams. The “vehicle” category covers deaths which involve vehicles in flooded streams or roadways. The “Inundation” category covers situations where a death is caused by the flooding of homes or other structures. The “Landslide” category is self-explanatory.

These statistics convey an important message. Whether on foot or in a vehicle, avoid streams and flooded roadways during flash flood situations.



The statistics at left indicate a troubling rising trend with respect to vehicle-related flash flood deaths, which are avoidable in the majority of cases. At the present rate, the decade of the 2000s will end up with 10 vehicle-related flash flood deaths in Hawaii.

The National Weather Service’s message is simple. “Turn Around, Don’t Drown”. Stay out of flooded roadways!

For more information on flash floods and flash flood safety, please contact the Honolulu Forecast Office at (808)973-5270.

