

NOAA Technical Memorandum NWS WR-123

STUDY OF A HEAVY PRECIPITATION OCCURRENCE IN
REDDING, CALIFORNIA

Christopher E. Fontana

National Weather Service Office (Fire Weather)
Redding, California
June 1977

UNITED STATES
DEPARTMENT OF COMMERCE
Nancy M. Kreps, Secretary

NATIONAL OCEANIC AND
ATMOSPHERIC ADMINISTRATION
Robert M. White, Administrator

NATIONAL WEATHER
SERVICE
George P. Cressman, Director



CONTENTS

	<u>Page</u>
Figures.	iii
I. Introduction	1
II. Synoptic Discussion.	1
III. Precipitation Pattern.	2
IV. Conclusion.	3
V. Acknowledgements.	3
VI. Addendum.	3
VII. References.	4

FIGURES

	<u>Page</u>
Table 1. Rainfall reports from local Redding residents.	5
Figure 1. 50 kPa (500 mb) analysis 12Z August 13, 1976	6
Figure 2. 50 kPa (500 mb) analysis 12Z August 14, 1976	6
Figure 3. 24-hour height fall chart (50 kPa) 12Z August 12, 1976. 7	7
Figure 4. 24-hour height fall chart (50 kPa) 12Z August 13, 1976. 7	7
Figure 5. 24-hour height fall chart (50 kPa) 12Z August 14, 1976. 7	7
Figure 6. 30 kPa (300 mb) analysis 12Z August 14, 1976.	8
Figure 7. Surface analysis 15Z August 14, 1976.	9
Figure 8. Surface analysis 18Z August 14, 1976.	10
Figure 9. Surface analysis 00Z August 15, 1976.	11
Figure 10. 3-hourly isallobaric analysis for period ending at 00Z August 15, 1976.	12
Figure 11. 1630Z August 14 1976 Medford radar overlay.	13
Figure 12. 1730Z August 14, 1976 Medford radar overlay.	13
Figure 13. 1830Z August 14, 1976 Medford radar overlay.	13
Figure 14. 1930Z August 14, 1976 Medford radar overlay.	13
Figure 15. 2330Z August 14, 1976 Sacramento radar overlay	14
Figure 16. 0030Z August 15, 1976 Sacramento radar overlay	14
Figure 17. 0130Z August 15, 1976 Sacramento radar overlay	14
Figure 18. 0230Z August 15, 1976 Sacramento radar overlay	14
Figure 19. 0330Z August 15, 1976 Sacramento radar overlay	14
Figure 20. 0530Z August 15, 1976 Sacramento radar overlay	14
Figure 21. Precipitation Depth-Duration-Frequency Table for Redding Station 1SE (5 minutes through 24 hours)	15
Figure 22. Precipitation Depth-Duration-Frequency Table for Redding Fire Station, (1 day through 365 days).	16
Figure 23. LFM 24-hr. Forecast Panels valid 0000Z Aug. 15, 1976 . 17	17
Figure 24. LFM 24-hr. Forecast Panels valid 1200Z August 1976. Based on 12 hours later data than Figure 23.	18
Figure 25. Verifying Analysis and 24-hr. LFM 50-kPa Prognosis valid 12Z August 15, 1977.	19

STUDY OF A HEAVY PRECIPITATION OCCURRENCE IN REDDING, CALIFORNIA

Chris Fontana
Weather Service Office (Fire Weather)
National Weather Service Western Region, NOAA
Redding, California

I. INTRODUCTION

On August 14 and 15, 1976, heavy thunderstorms moved through northern California. The heaviest area of precipitation was in the area west and north of Redding, California. The rain fell at such a rapid rate that normal drains could not handle the water, and several areas of the city received water and mud damage from the overflow. The Army Corps of Engineers dispatched personnel to the Redding area to compile and verify rainfall amounts measured by the local residents. Their findings showed rain amounts in excess of 8 inches, with rainfall rates of 2-1/2 inches per hour. This paper discusses the synoptic pattern preceding and during the thunderstorms. The precipitation pattern is discussed, using the radar displays from the WSR-57 radars at Medford, Oregon and Sacramento, California.

II. SYNOPTIC DISCUSSION

Saucier (5) states that short waves are those progressive waves in the atmosphere that "have associated divergence and vertical motion patterns which produce the important daily weather phenomena". It was one of these short waves that triggered the Redding deluge. The upper air pattern during the time in question consisted of a large high near longitude 160°W and a trough along the west coast (Figure 1). A dramatic deepening of the west coast trough took place during the 24 hours ending at 12Z August 14 (Figures 1 and 2). This deepening is the result of the short wave trough phasing with the long wave trough.

This can be shown using the method described by Riehl and others (4). This method uses the 24-hour height fall areas at 50 kPa (500 mb). If these fall areas are followed for several periods, they trace out the long wave pattern and seem to intensify as they move into the long wave trough position. Figures 3, 4 and 5 are successive 24-hour height-change charts for the period from 12Z August 11 to 12Z on August 14, 1976. Figure 3 shows the short wave to be located off the coast just west of Redding. The 30 kPa (300 mb) analysis for 12Z August 14 (Figure 6) shows a wind maximum associated with this short wave in the west side of the trough which is another indication of the intensification this system is undergoing.

In response to these dynamic changes in the upper levels, several significant things were occurring on the surface. Figures 7, 8 and 9 are surface maps for 15Z and 18Z on the 14th and 00Z on the 15th of August. During the early morning of the 14th, a frontal system passed through northern California. In response to the short wave aloft, a trough line is shown entering the California and Oregon coasts at 15Z. As this trough lowers pressures in northern California and southern Oregon, the weak front in central California begins to move northward toward the trough. This process continues and as the short-wave aloft moves over the front, an "instant occlusion" is formed with a triple point or flat wave just west of Redding. While the 24-hour 500 mb height-change was very useful in locating the short wave, the best indication of what was about to happen was the surface isallobaric field. A simple explanation of the pressure tendency or change is that it is the change in the weight of the column of air over a given point. Therefore, negative pressure tendencies indicate upper level divergence, which would be expected ahead of a short-wave trough. Figure 10 is the 3-hourly isallobaric analysis for the period ending 00Z August 15, 1976. The large fall area in northern California is where the frontal wave was developing. In 1975, Mogil (2) did a similar study of an unforecast snowstorm in the eastern U.S. In that case, as well as this one, when the pressure fall area merged with a quasi-stationary front, vigorous development occurred.

III PRECIPITATION PATTERN

As mentioned in the introduction, the Army Corps of Engineers collected data from people in the Redding area. The rainfall reports they consider accurate are shown in Table I. I deleted individual names and addresses, but all reports are from the areas west and north of Redding. The precipitation originated from mostly shower-type clouds (cumulonimbus) and, therefore, was displayed well on radar. The wave formed between the Medford, Oregon and Sacramento, California radars, and an integration of the two scopes gives a good picture of the precipitation pattern as it moved through northern California. Figures 11 through 14 are the Medford radar overlays from 1630Z to 1930Z on August 14. These show the progression of echoes associated with the trough line as the trough moved into the Oregon and California coasts. Figures 15 through 20 are the Sacramento overlays from 2130Z August 14 to 0530Z August 15. Considerable shower activity is shown over all of central and northern California, but the strongest returns are in the north end of the valley, closer to where the wave formed on the front. The strongest echoes are shown from 0030Z through 0330Z on August 15 (Figures 16-19). At this time, the radar shows an echo with an intensity of 5 just west of Redding. Reporting station number 13 in Table I is 5 miles west of Redding. This report shows that 2-1/2 inches of rain were measured in one hour during the evening of the 14th. This correlates very well with the theoretical rates shown in the lower left hand corner of the Sacramento overlays. An echo with an intensity of 5 is highly correlated with rainfall rates of 2-5 inches per hour.

A good illustration of how intense this storm was can be shown by checking the depth duration tables in Figures 21 and 22. These show that an hourly rate of 2-1/2 inches will have a return period of 10,000 years and a 24-hour rain of 6-8 inches will return every 50 to over 200 years.

Two other things can be credited with increasing the rainfall from this system. First, the showers occurred in the late afternoon and early evening when convection was at its peak. Secondly, Oertel (3) has shown that under southerly surface flow, the area west and north of Redding will receive heavier rains than other portions of the local area. This is because during southerly flow periods, the air is being forced up and through the Sacramento River canyon.

IV. CONCLUSION

During occurrences like the one just described, good mesoscale forecasts are required. Just using the Numerical Weather Prognoses (NWP) will not achieve this. (Editor's Note: See Addendum). The forecaster must use other charts and aids beside those transmitted on the facsimile circuits. Two of these aids are the 24-hour height-change chart and the isallobaric analysis. The height-change chart, if done for several days, will trace out the long wave pattern and locate the short wave features. As shown by Hess (1), the pressure-tendency field defines the integrated mass divergence in the vertical column. It is this field that really tells the forecaster what to expect over the next several hours. While the height-change chart can be checked daily, the pressure tendency can be followed hourly. In the case described here, following the pressure tendency would have given the forecasters a good clue of what was about to happen in northern California. Use of this information would have aided in refining the required forecasts and warnings.

V. ACKNOWLEDGEMENTS

I would like to thank Mr. Leonard Snellman and all those in the Scientific Services Division who reviewed this paper. I would also like to thank Perry Fontana, hydro-meteorologist with the Army Corps of Engineers for helping with the data collection and analysis.

VI. ADDENDUM

Editor's Note: We thought that it would be of interest to include the 24-hour LFM forecasts valid during the heavy rain incident. The overall LFM guidance was good, but as the author stated, you can't expect the details to be indicated. The 12- to 24-hour precipitation forecast covering the period 1200Z August 14 to 0000Z August 15 indicated rather heavy rainfall for northern California (see Figure 23). The next 24-hour LFM precipitation forecast based on 12-hour later data for the period 0000Z to 1200Z August 15 (Figure 24), was for less than one half inch of rain

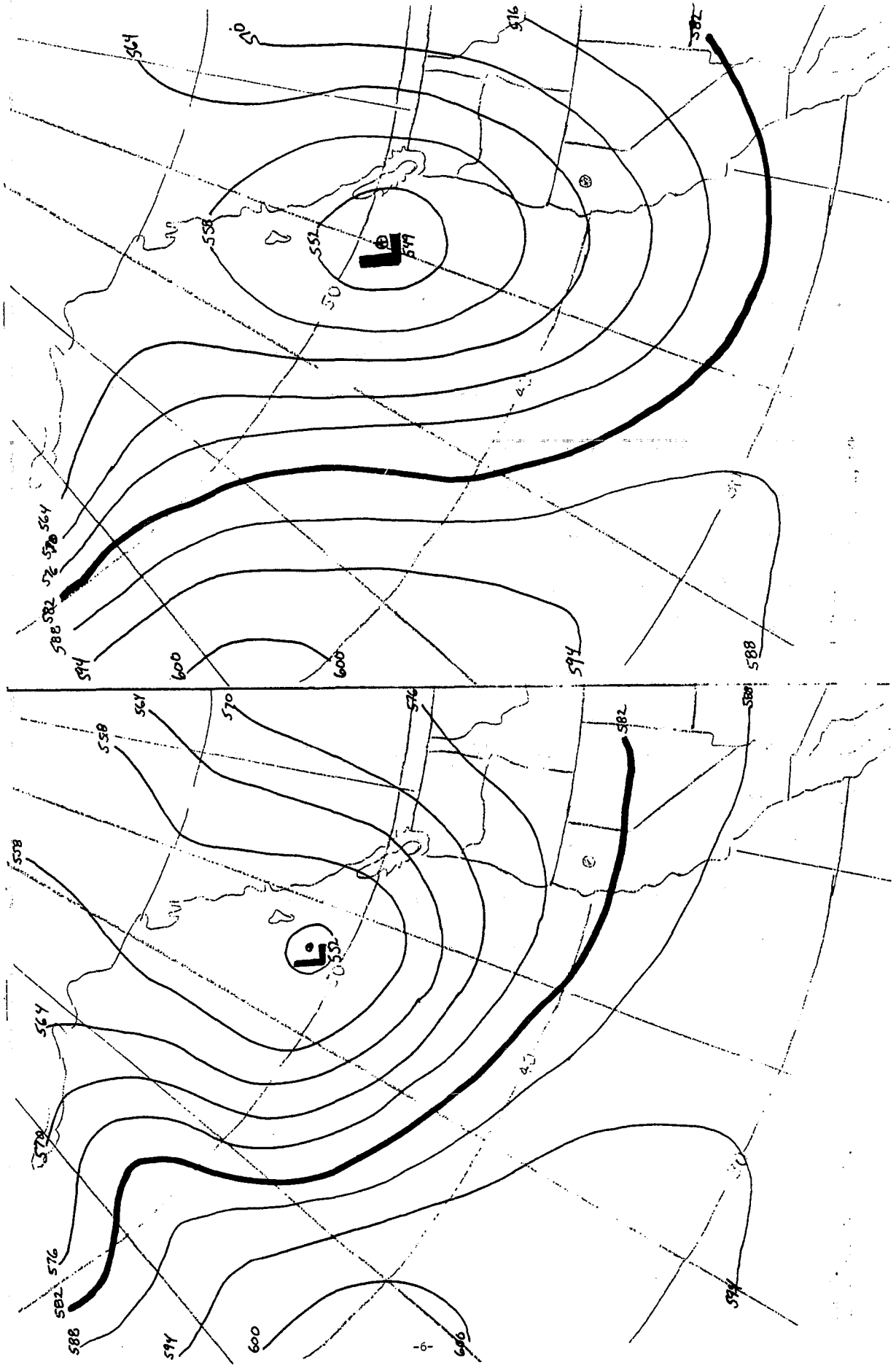
in the Redding area. Considering the strong LFM bias of over-forecasting precipitation amounts, this guidance was not interpreted as indicating abnormally heavy rains. However, the LFM guidance certainly gave the proper indication of expecting precipitation with the front. Also, the LFM 50-kPa prognosis valid Sunday morning verified very well (see Figure 25). The triple-point wave development was not indicated in either LFM forecast.

VII. REFERENCES

1. Hess, S. L., Introduction to Theoretical Meteorology, New York, Holt, Rinehart and Winston, 362 pp., 1959.
2. Mogil, H. M., Pressure Tendency - An Overlooked Diagnostic Tool, Washington, D.C., NOAA, NWS, NMC Technical Attachment 75-1, 4 pp., 1975.
3. Oertel, A. G.; Rainfall Patterns with the Redding Area, 1975 unpublished.
4. Riehl, Herbert, et al., Forecasting in Middle Latitudes, Meteorological Monographs Vol. 1 No. 5, Published by the American Meteorological Society, June 1952.
5. Saucier, Walter J., Principles of Meteorological Analysis, University of Chicago Press, 1965.

TABLE I

<u>Number</u>	<u>Report</u>
1	6.83 inches 8 am 8/14/76 to 8 am 8/15/76
2	8.4 inches storm total measured in a 12-inch wedge gauge
3	6.5 inches in a coffee can 24 hour total ending at 8 am 8/15/76
4	6.0 inches in number 10 tin can
5	6.5 inches in a 5-gallon paint can
6	6.0 inches in a 33-gallon garbage can
7	8.8 inches for 24 hours ending morning of 8/15/76
8	8.0 inches in a 5-gallon paint can
9	5.5 inches after 1 pm 8/14/76
10	6.25 inches total. 3.75 between 8 am and 5 pm 8/14/76 and 2.00 inches between 5 pm 8/14/76 and 8 am 8/15/76
11	2.60 inches 4 pm to 9 pm 8/14/76
12	3.15 inches 5:30 pm to 9:30 pm 8/14/76
13	In one hour's time on evening of 14th, measured 2-1/2 inches
14	7.75 inches in 33-gallon garbage can



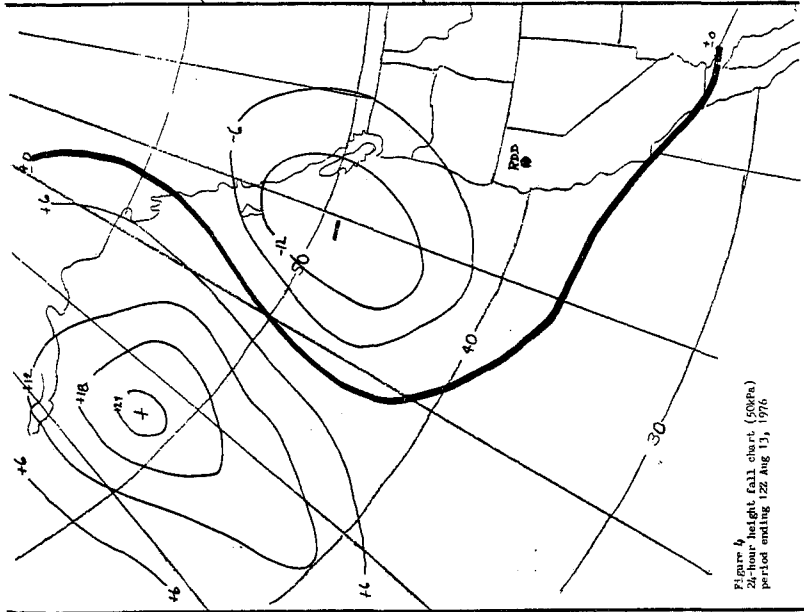


Figure 3
24-hour height fall chart (500pa)
period ending 122 Aug 12, 1976

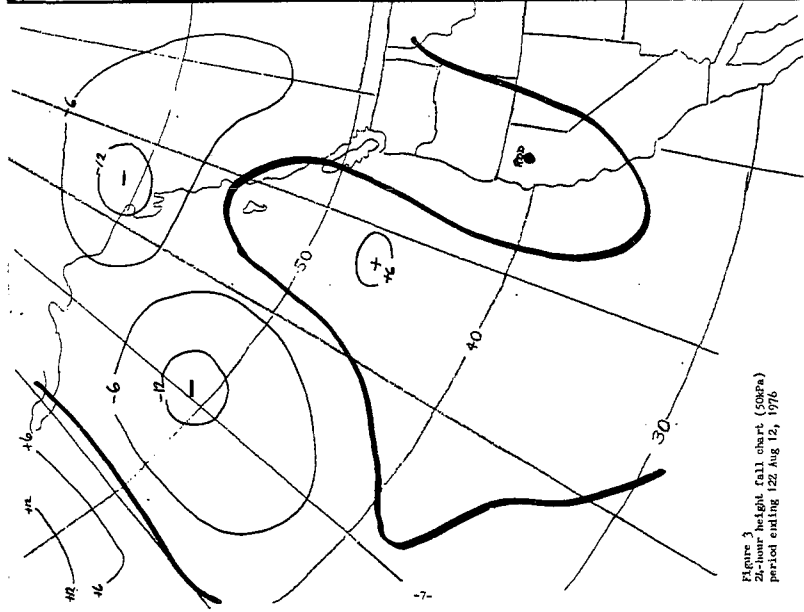


Figure 4
24-hour height fall chart (500pa)
period ending 122 Aug 13, 1976

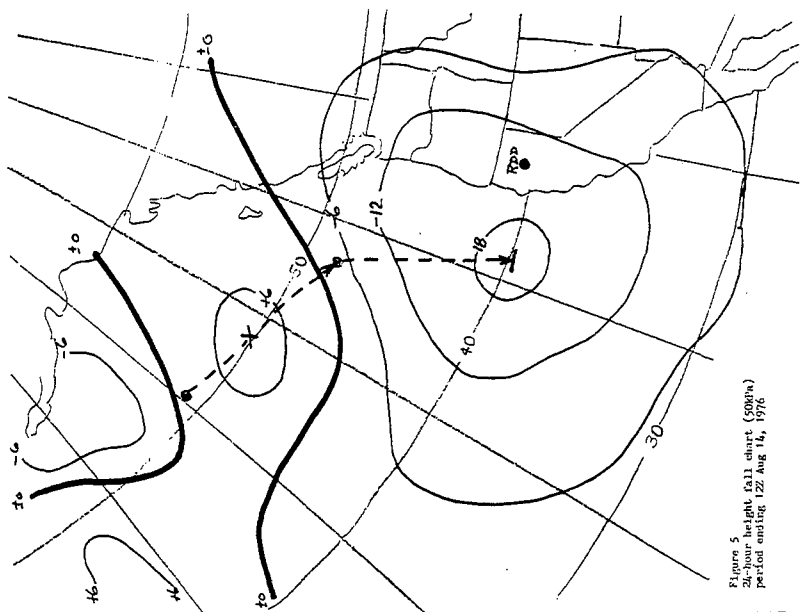


Figure 5
24-hour height fall chart (500pa)
period ending 122 Aug 14, 1976

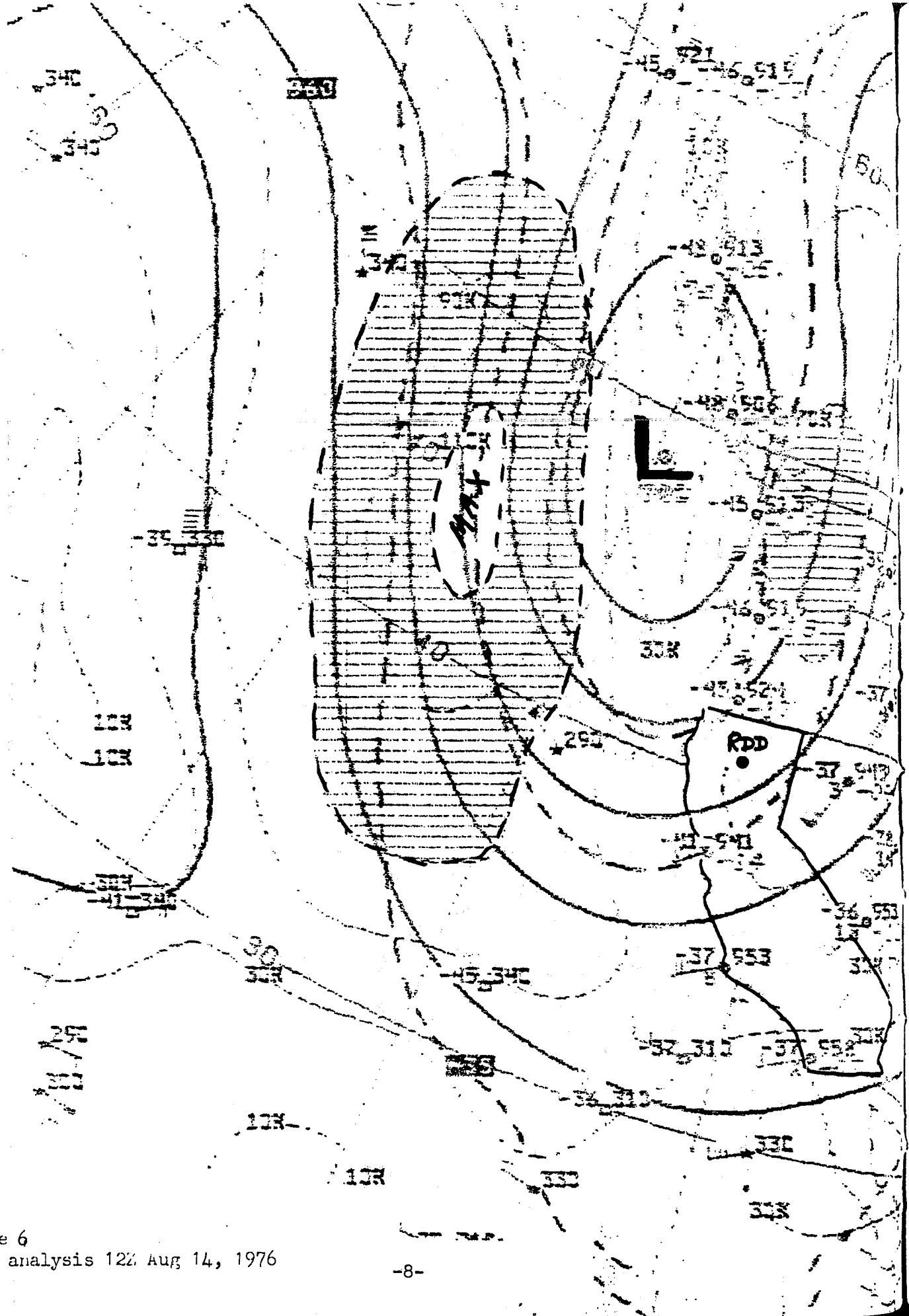
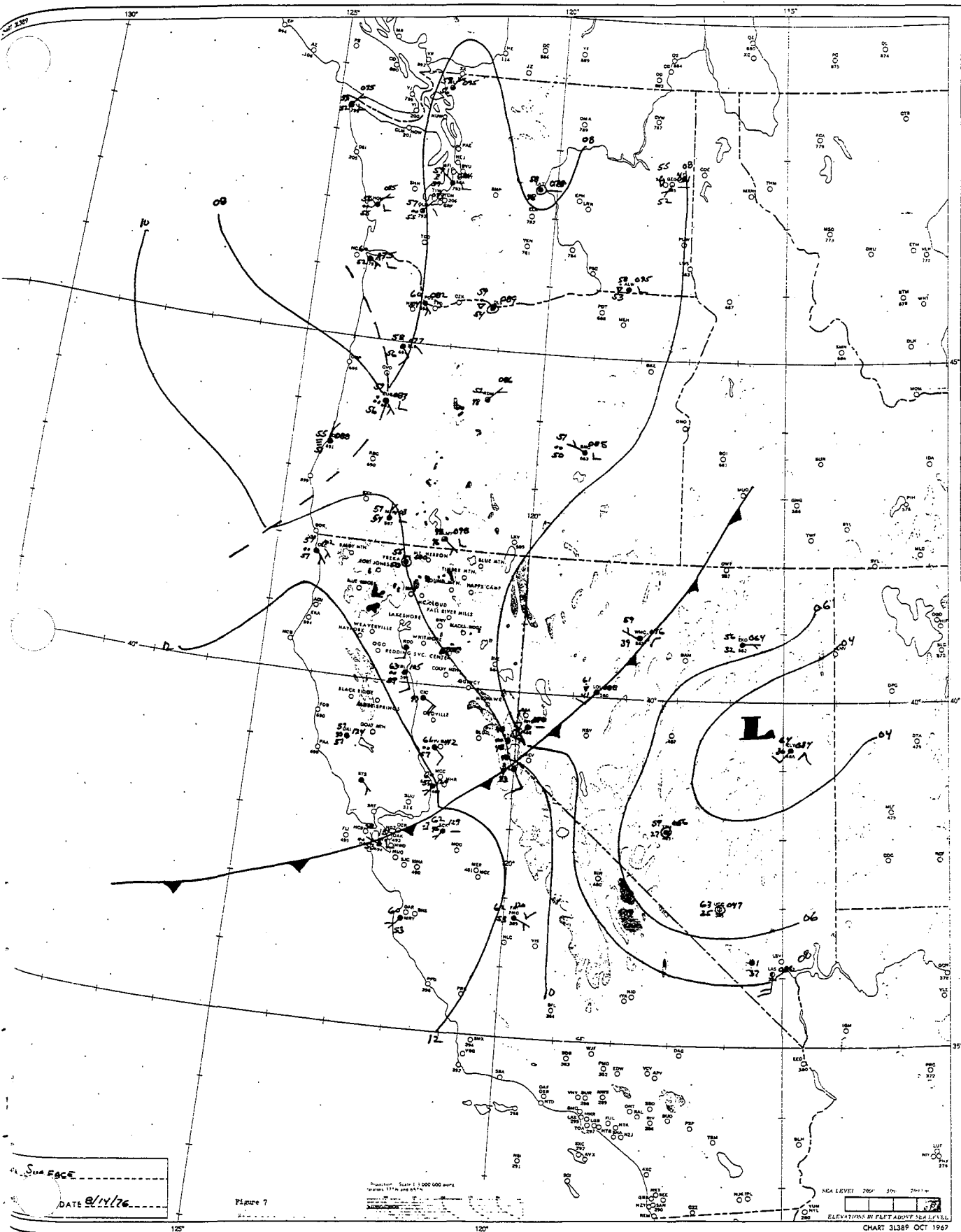


Figure 6
30kPa analysis 12% Aug 14, 1976

CHART 313
DATA
1E.



Sea Face
 DATE 8/14/76

Figure 7

Projection: Scale 1:50,000
 Datum: 1929
 Contour Interval: 10 fms

MSL LEVEL 200' 10' 200'
 ELEVATIONS IN FEET ABOVE SEA LEVEL
 CHART 3138P OCT 1947

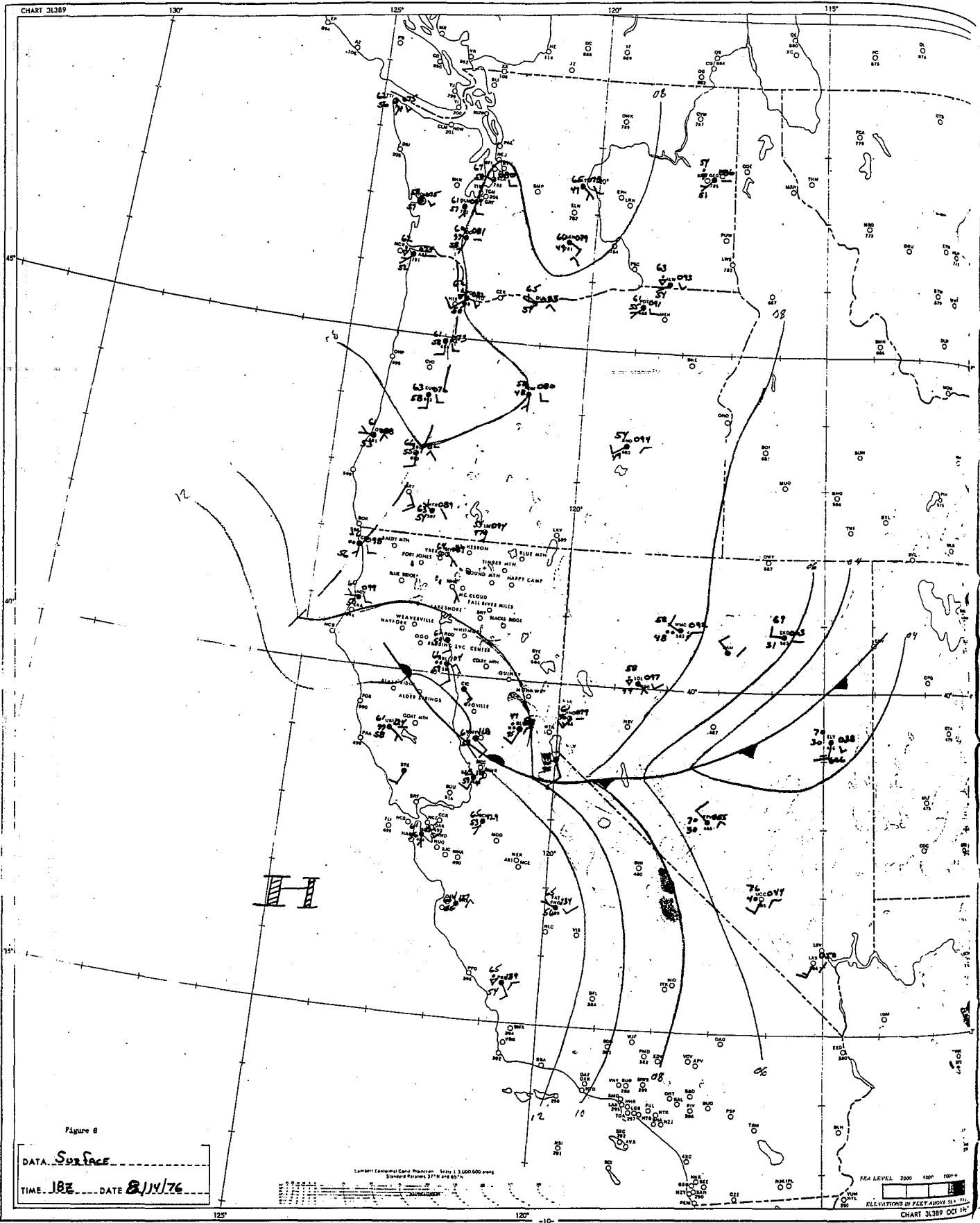


Figure 8

DATA SURFACE
 TIME 18Z DATE 2/14/76

Lambert Conformal Conic Projection Scale 1:3,000,000
 Standard Parallels 37°N and 63°N

SEA LEVEL 2000 1000 500
 ELEVATIONS IN FEET ABOVE SEA LEVEL
 CHART 31389 OCT 1975

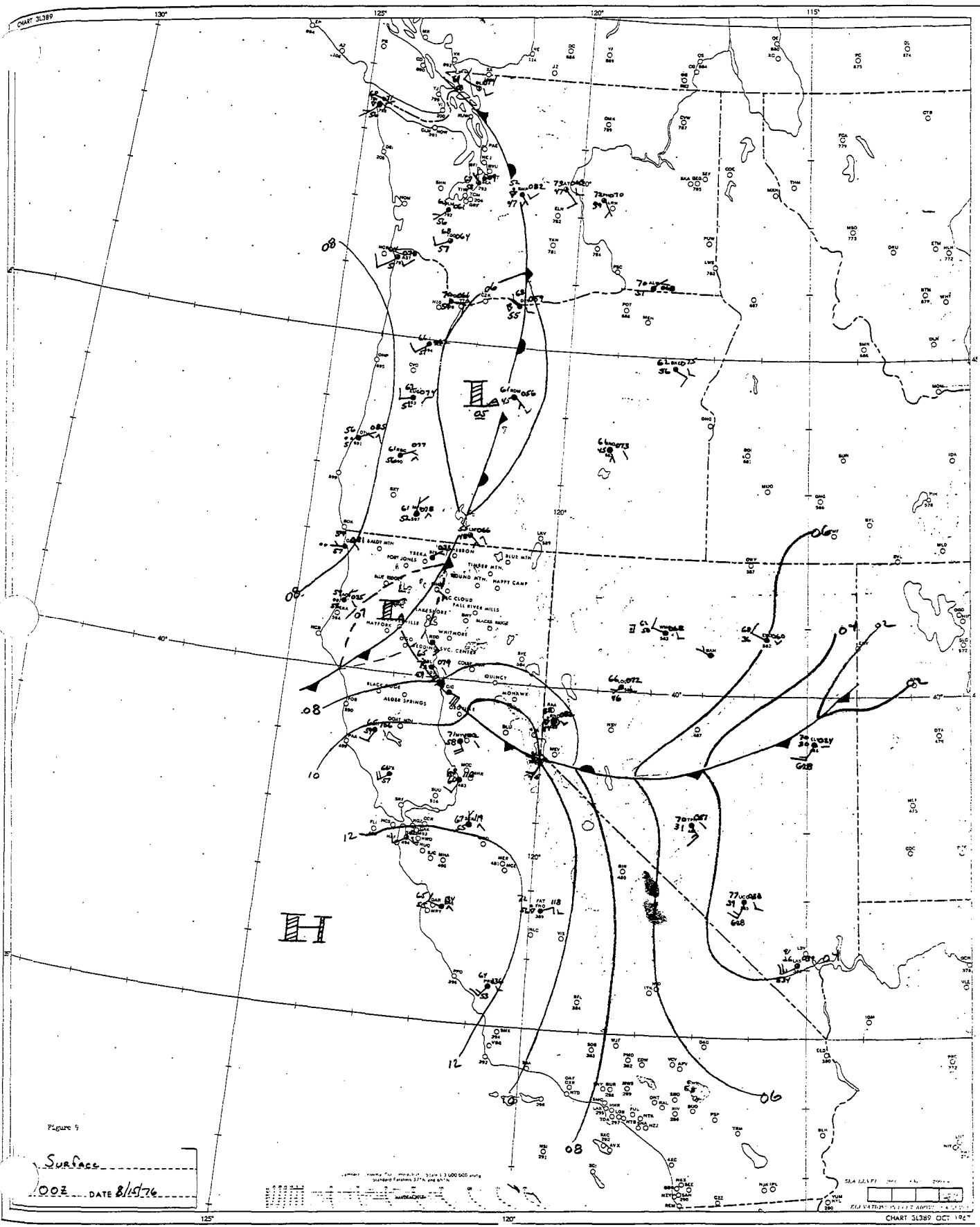


Figure 9

Surface

00Z DATE 8/15/76

Scale: 1:100,000
 Vertical Datum: Mean High Water
 Horizontal Datum: WGS 84
 Chart No. 31389

Scale: 1:100,000
 Vertical Datum: Mean High Water
 Horizontal Datum: WGS 84
 Chart No. 31389 OCT 1967

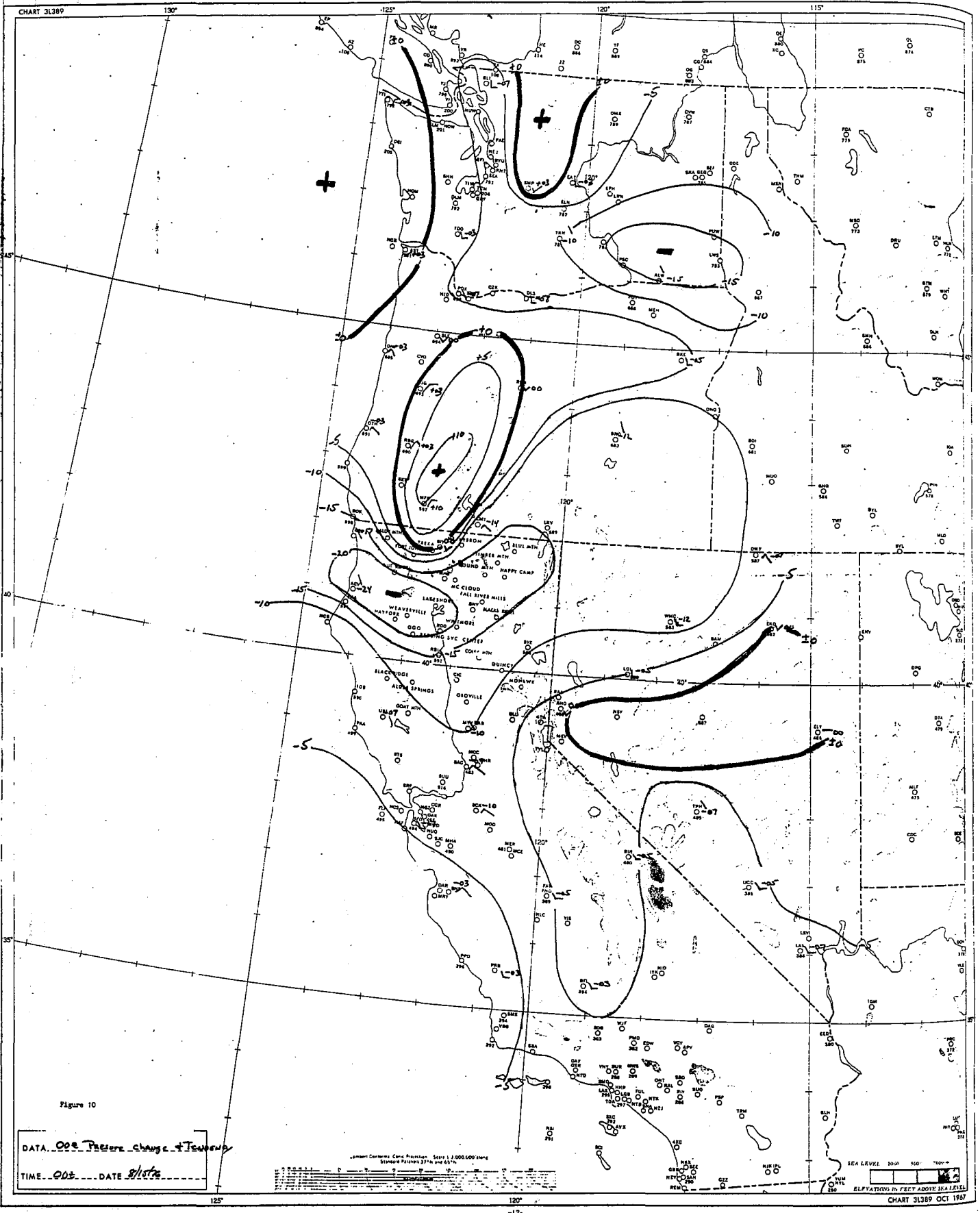


Figure 10

DATA... *005 Pressure change + Temperature*

TIME... *005* ... DATE *8/1/52*

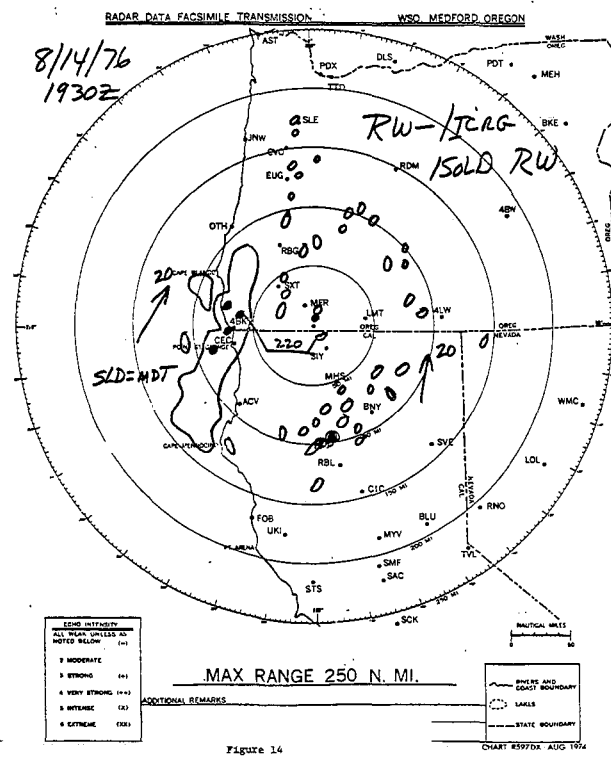
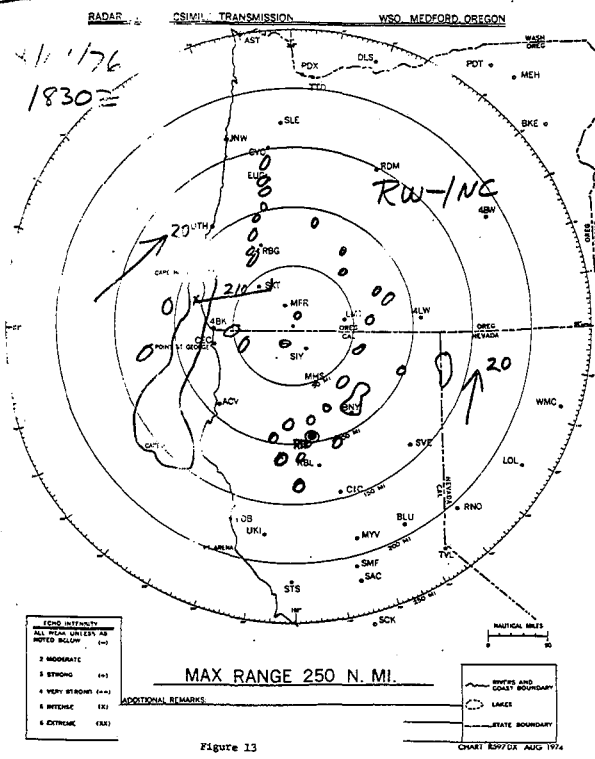
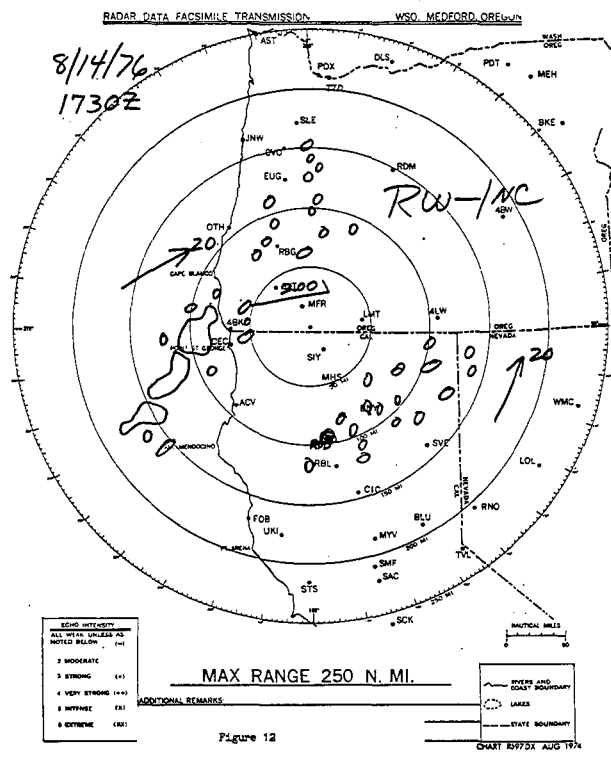
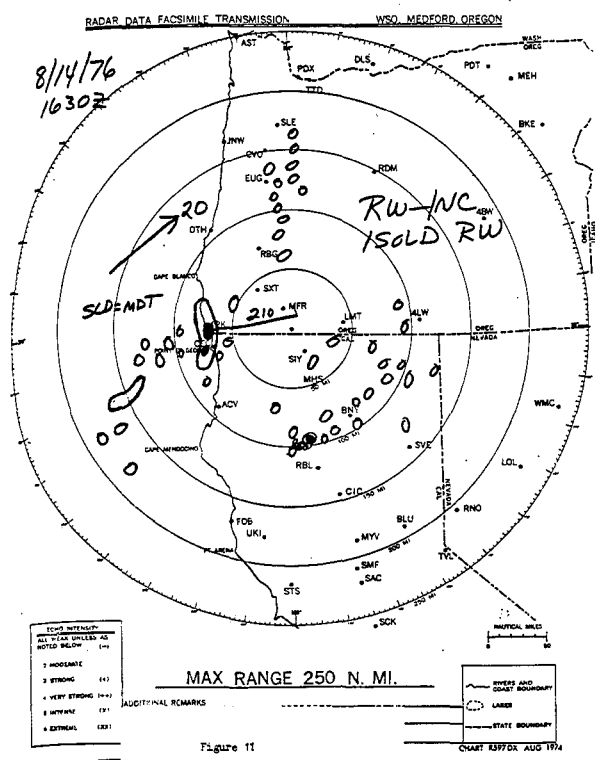
United States Coast and Geodetic Survey, Office of Hydrography, Washington, D.C. 20540
 Sounding Datum: Mean Low Water
 Chart Datum: Mean Low Water
 Vertical Datum: Mean Sea Level
 Horizontal Datum: North American Datum of 1983
 Scale: 1:50,000
 Projection: Mercator
 Contour Interval: 10 fathoms
 Soundings: 10, 20, 30, 40, 50, 60, 70, 80, 90, 100, 110, 120, 130, 140, 150, 160, 170, 180, 190, 200, 210, 220, 230, 240, 250, 260, 270, 280, 290, 300, 310, 320, 330, 340, 350, 360, 370, 380, 390, 400, 410, 420, 430, 440, 450, 460, 470, 480, 490, 500, 510, 520, 530, 540, 550, 560, 570, 580, 590, 600, 610, 620, 630, 640, 650, 660, 670, 680, 690, 700, 710, 720, 730, 740, 750, 760, 770, 780, 790, 800, 810, 820, 830, 840, 850, 860, 870, 880, 890, 900, 910, 920, 930, 940, 950, 960, 970, 980, 990, 1000

SEA LEVEL 1000 500 0 500 1000
 ELEVATIONS IN FEET ABOVE SEA LEVEL

8/1/52

31

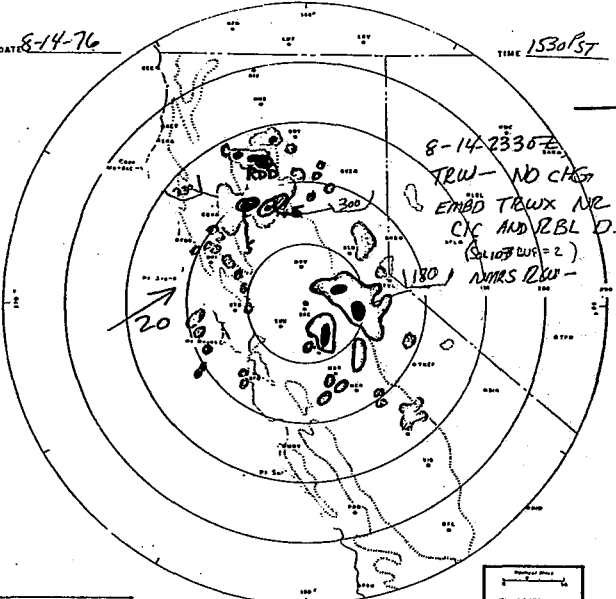
1000
500
0
500
1000



80Z
90Z
100Z
110Z
120Z
130Z
140Z
150Z
160Z
170Z
180Z
190Z
200Z
210Z
220Z
230Z
240Z
250Z
260Z
270Z
280Z
290Z
300Z
310Z
320Z
330Z
340Z
350Z
360Z

DATE 8-14-76

TIME 1530 PST



MAX RANGE 250 N. MI.

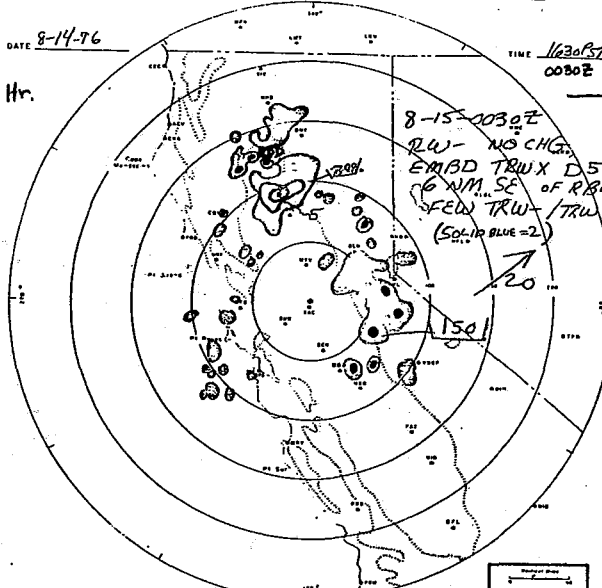
ADDITIONAL REMARKS:

Figure 15

DATE 8-14-76

TIME 1630 PST

DATE 8-14-76

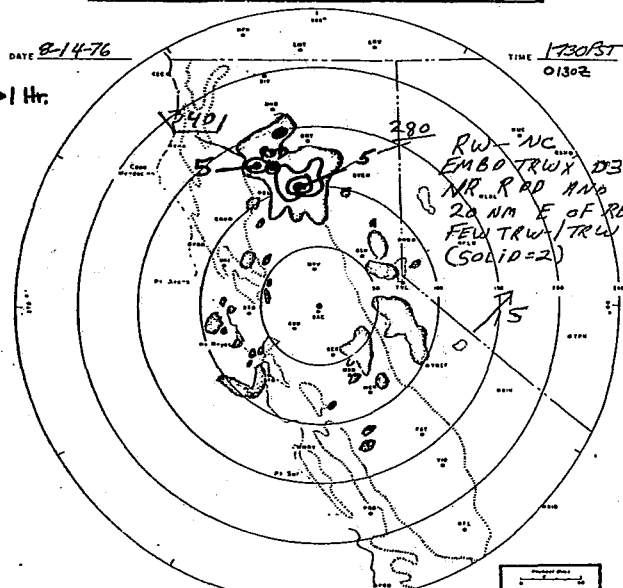


MAX RANGE 250 N. MI.

ADDITIONAL REMARKS:

Figure 16

TIME 1730 PST



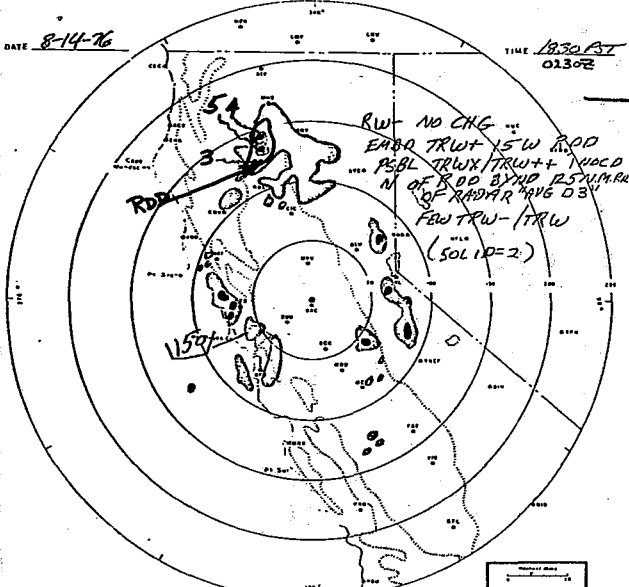
MAX RANGE 250 N. MI.

ADDITIONAL REMARKS:

Figure 17

DATE 8-14-76

TIME 1830 PST

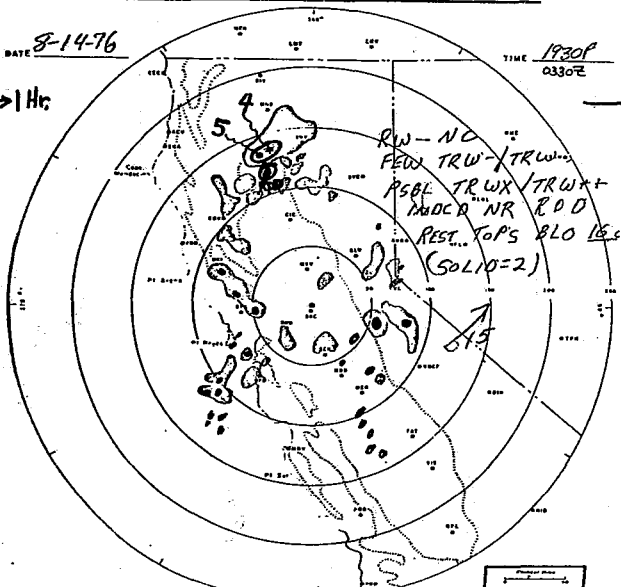


MAX RANGE 250 N. MI.

ADDITIONAL REMARKS:

DATE 8-14-76

TIME 1930 PST

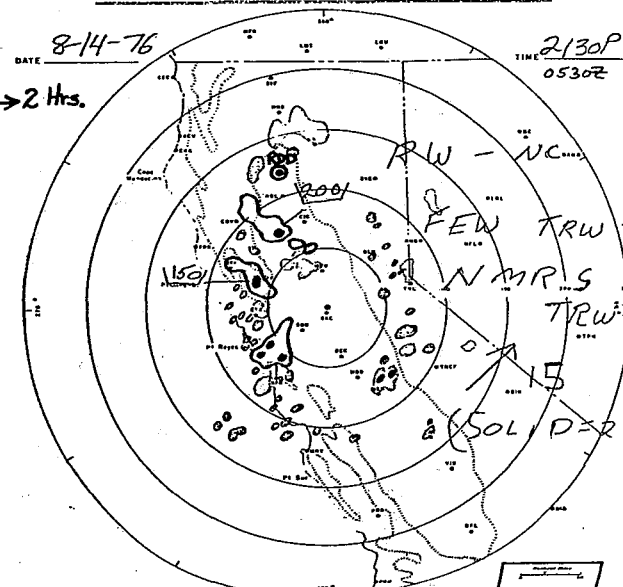


MAX RANGE 250 N. MI.

ADDITIONAL REMARKS:

DATE 8-14-76

TIME 2130 PST



MAX RANGE 250 N. MI.

ADDITIONAL REMARKS:

PRECIPITATION DEPTH-DURATION-FREQUENCY TABLE

STATION NO. BSN ORDER SUB	STATION NAME	ELEV	SEC	TWP	RNG	LOT	BWM	LATITUDE	LONGITUDE	COUNTY CODE
A00 7295 0	REDDING ISE	470						40.567	122.383	45

MAXIMUM PRECIPITATION FOR INDICATED DURATION D-DAYS H-HOURS

RETURN PERIOD IN YEARS	5M	10M	15M	30M	1H	2H	3H	6H	12H	24H	C-YR
2	.21	.31	.40	.53	.75	1.00	1.20	1.62	2.27	3.18	37.12
5	.28	.42	.54	.71	1.01	1.34	1.61	2.18	3.05	4.27	47.98
10	.33	.49	.63	.83	1.17	1.56	1.87	2.54	3.55	4.97	54.13
20	.37	.56	.71	.94	1.32	1.77	2.12	2.87	4.02	5.62	59.46
25	.39	.58	.73	.97	1.37	1.83	2.19	2.97	4.16	5.83	61.06
40	.39	.59	.75	.99	1.40	1.86	2.23	3.02	4.23	5.93	64.27
50	.43	.64	.81	1.07	1.52	2.02	2.42	3.28	4.60	6.44	65.74
100	.47	.70	.89	1.17	1.66	2.21	2.64	3.59	5.02	7.03	70.09
200	.51	.75	.96	1.26	1.79	2.39	2.86	3.88	5.43	7.61	74.19
1000	.59	.88	1.12	1.48	2.10	2.80	3.35	4.54	6.36	8.90	83.01
10000	.71	1.06	1.35	1.78	2.52	3.36	4.02	5.45	7.63	10.69	94.45
PMP	1.40	2.09	2.66	3.51	4.96	6.63	7.93	10.75	15.05	21.08	222.33
MEAN	.226	.335	.427	.564	.798	1.065	1.275	1.729	2.420	3.390	37.941
CLOCK HR. COR.	1.000	1.000	1.000	1.000	1.000	1.000	1.000	1.000	1.000	1.000	1.000
CALCULATED SKEW	.964	1.066	1.516	1.087	1.923	2.295	1.928	1.286	1.036	.637	.865
REGIONAL SKEW	1.100	1.100	1.100	1.100	1.100	1.100	1.100	1.100	1.100	1.100	.400
SDEW USED	1.100	1.100	1.100	1.100	1.100	1.100	1.100	1.100	1.100	1.100	.400
KURTOSIS	4.109	4.891	7.098	4.622	7.766	10.638	7.700	4.418	4.738	4.093	4.177
N	36	36	36	36	42	42	41	41	41	41	42
RECORD YEAR	1966	1942	1942	1966	1966	1966	1966	1966	1964	1964	1941
RECORD MAXIMUM	.500	.820	1.200	1.300	2.460	3.450	3.480	3.510	5.080	6.350	64.370
NORMALIZED MAX	2.589	3.059	3.592	2.818	3.869	4.338	3.683	2.784	3.155	2.950	2.757
CALC. COEF. VAR	.469	.473	.503	.464	.538	.516	.470	.370	.348	.296	.253
REGN. COEF. VAR	.348	.348	.348	.348	.348	.348	.348	.348	.348	.348	.324
USED COEF. VAR	.348	.348	.348	.348	.348	.348	.348	.348	.348	.348	.324
MEAN/A	.0060	.0088	.0113	.0149	.0210	.0281	.0336	.0456	.0638	.0893	1.0000
RP10/A	.0087	.0130	.0165	.0218	.0309	.0412	.0493	.0668	.0935	.1310	1.4266
RP25/A	.0102	.0152	.0194	.0255	.0362	.0483	.0578	.0783	.1096	.1536	1.6092
RP50/A	.0113	.0168	.0214	.0282	.0400	.0533	.0638	.0865	.1212	.1697	1.7327
RP100/A	.0123	.0183	.0234	.0308	.0436	.0582	.0697	.0945	.1323	.1853	1.8474
RP1000/A	.0156	.0232	.0296	.0390	.0552	.0738	.0883	.1197	.1675	.2346	2.1878
RP10000/A	.0188	.0279	.0355	.0468	.0663	.0885	.1059	.1436	.2011	.2816	2.4894
PMP/A	.0370	.0550	.0701	.0924	.1308	.1747	.2090	.2834	.3967	.5557	5.8600

PEARSON TYPE III DISTRIBUTION USED
 PROBABLE MAXIMUM PRECIPITATION ESTIMATE BASED ON 15 STANDARD DEVIATIONS
 WHERE N IS SMALL RESULTS ARE NOT DEPENDABLE

FIGURE 21

-15-

PRECIPITATION DEPTH-DURATION-FREQUENCY TABLE

STATION NO. HSN ORDER SUB A00 7296 0	STATION NAME REDDING FS 2	ELEV 119	SEC 577	TWP 35	RNG 32N	LOT 05W	RMM M	LATITUDE 40.583	LONGITUDE 122.400	COUNTY CODE 45
--	------------------------------	-------------	------------	-----------	------------	------------	----------	--------------------	----------------------	----------------------

MAXIMUM PRECIPITATION FOR INDICATED DURATION D-DAYS H-HOURS

RETURN PERIOD IN YEARS	10	20	30	40	50	60	80	100	150	200	300	600	3650
2	3.14	4.26	4.94	5.37	5.81	6.24	6.95	7.73	8.88	9.96	12.15	17.85	35.48
5	4.12	5.61	6.52	7.10	7.63	8.23	9.15	10.39	12.32	13.99	16.89	24.97	47.39
10	4.78	6.52	7.56	8.25	8.84	9.56	10.62	12.16	14.61	16.67	20.05	29.71	54.30
20	5.41	7.37	8.55	9.34	9.98	10.82	12.01	13.84	16.77	19.21	23.03	34.20	60.65
25	5.60	7.64	8.86	9.68	10.34	11.21	12.45	14.36	17.45	20.00	23.97	35.60	62.61
40	6.00	8.20	9.50	10.38	11.09	12.02	13.35	15.45	18.86	21.65	25.91	38.51	66.65
50	6.19	8.46	9.80	10.71	11.43	12.41	13.77	15.96	19.52	22.42	26.81	39.88	68.53
100	6.77	9.25	10.72	11.72	12.50	13.57	15.06	17.52	21.53	24.78	29.59	44.05	74.22
200	7.34	10.03	11.63	12.71	13.54	14.72	16.33	19.04	23.50	27.09	32.31	48.13	79.74
1000	8.53	11.80	13.67	14.96	15.91	17.31	19.20	22.51	27.98	32.33	38.48	57.40	92.09
10000	10.42	14.26	16.52	18.08	19.20	20.92	23.20	27.32	34.21	39.62	47.06	70.30	108.97
PMP	19.30	26.47	30.64	33.59	35.55	38.82	43.04	51.24	65.13	75.83	89.66	134.31	216.08
MEAN	3.360	4.564	5.300	5.765	6.219	6.694	7.445	8.331	9.656	10.871	13.226	19.460	38.421
STANDARD DEV.	1.063	1.460	1.689	1.855	1.956	2.142	2.373	2.860	3.698	4.330	5.096	7.657	11.844
CLOCK HR. COR.	1.140	1.070	1.040	1.020	1.010	1.010	1.000	1.000	1.000	1.000	1.000	1.000	1.000
CALCULATED SKEW	1.686	1.130	1.135	1.053	.895	.942	.625	.873	1.066	1.194	.766	.791	.379
REGIONAL SKEW	1.300	1.300	1.300	1.300	1.300	1.300	1.300	1.300	1.300	1.300	1.300	1.300	1.000
SKEW USED	1.300	1.300	1.300	1.300	1.300	1.300	1.300	1.300	1.300	1.300	1.300	1.300	1.000
KURTOSIS	7.963	4.556	4.494	4.219	3.783	3.985	3.402	4.273	4.741	5.404	3.274	3.582	2.463
N	74	74	73	75	75	74	75	75	75	75	75	75	76
RECORD YEAR	1965	1965	1965	1965	1965	1970	1970	1970	1970	1970	1970	1970	1941
RECORD MAXIMUM	7.300	9.460	11.120	11.820	12.270	13.500	14.130	18.180	24.060	28.840	28.840	43.930	68.870
NORMALIZED MAX	3.707	3.353	3.445	3.254	3.094	3.178	2.817	3.443	3.895	4.150	3.064	3.196	2.571
COEFF. OF VAR.	.316	.320	.319	.322	.314	.320	.319	.343	.383	.398	.385	.393	.308
MEAN/A	.0874	.1188	.1380	.1500	.1619	.1742	.1938	.2168	.2513	.2829	.3442	.5065	1.0000
S.D/A	.0277	.0380	.0440	.0483	.0509	.0557	.0618	.0744	.0962	.1127	.1326	.1993	.3083
RP10/A	.1245	.1697	.1968	.2147	.2300	.2489	.2765	.3165	.3802	.4339	.5218	.7733	1.4132
RP25/A	.1458	.1989	.2306	.2518	.2692	.2918	.3240	.3738	.4542	.5205	.6239	.9266	1.6297
RP50/A	.1612	.2201	.2552	.2788	.2976	.3229	.3584	.4153	.5080	.5835	.6979	1.0379	1.7836
RP100/A	.1763	.2408	.2791	.3051	.3253	.3532	.3921	.4559	.5604	.6448	.7701	1.1464	1.9317
RP1000/A	.2245	.3071	.3558	.3893	.4141	.4505	.4998	.5858	.7283	.8415	1.0015	1.4940	2.3967
RP10000/A	.2711	.3711	.4299	.4706	.4998	.5444	.6038	.7111	.8904	1.0313	1.2249	1.8297	2.8363
PMP/A	.5024	.6889	.7974	.8742	.9254	1.0104	1.1201	1.3336	1.6950	1.9735	2.3336	3.4958	5.6238

FIGURE 22

PEARSON TYPE III DISTRIBUTION USED
 PROBABLE MAXIMUM PRECIPITATION ESTIMATE BASED ON 15 STANDARD DEVIATIONS
 WHERE N IS SMALL RESULTS ARE NOT DEPENDABLE

FIGURE 22

PEARSON LIFE AND
PROBABLE MAXIMUM PRECIPITATION ESTIMATE BASED ON 15
WHERE N IS SMALL RESULTS NOT DEPENDABLE

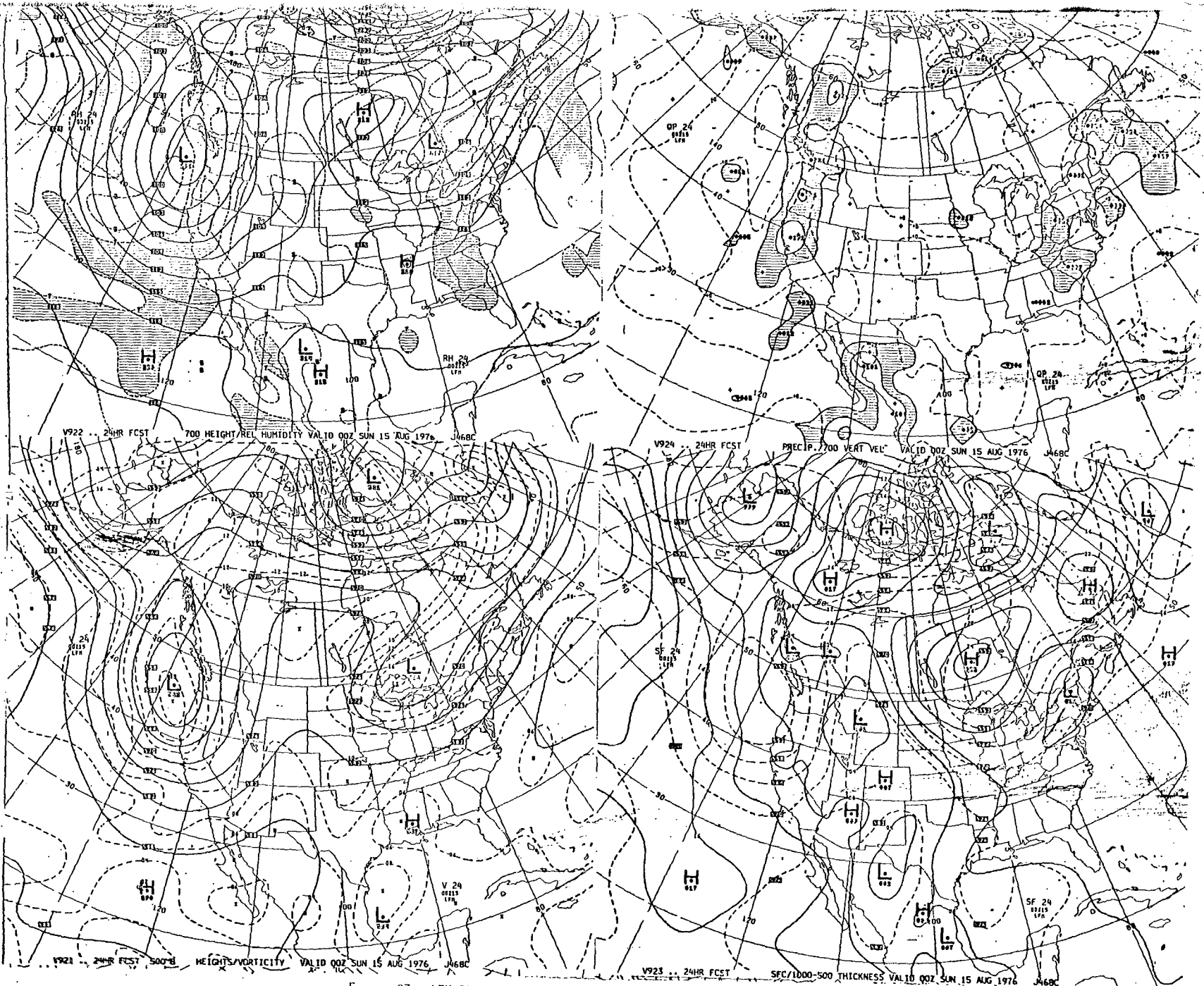


FIGURE 23. LFM 24-HR. FORECAST PANELS VALID 0000Z AUGUST 15, 1976.

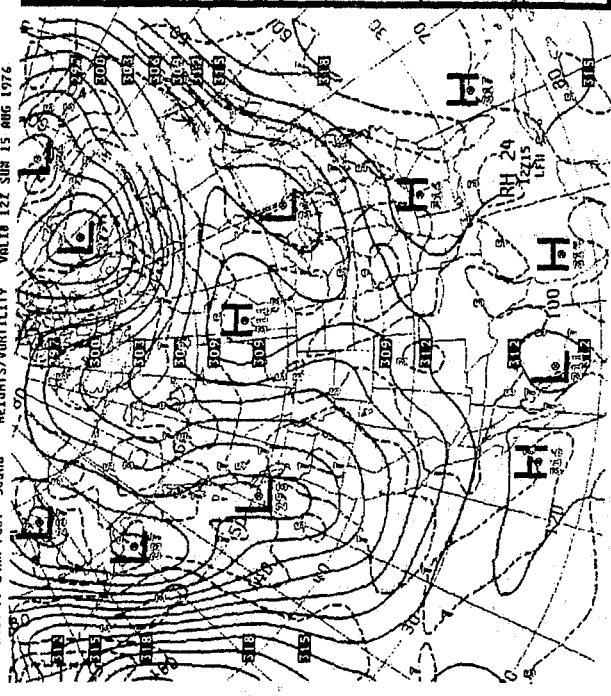
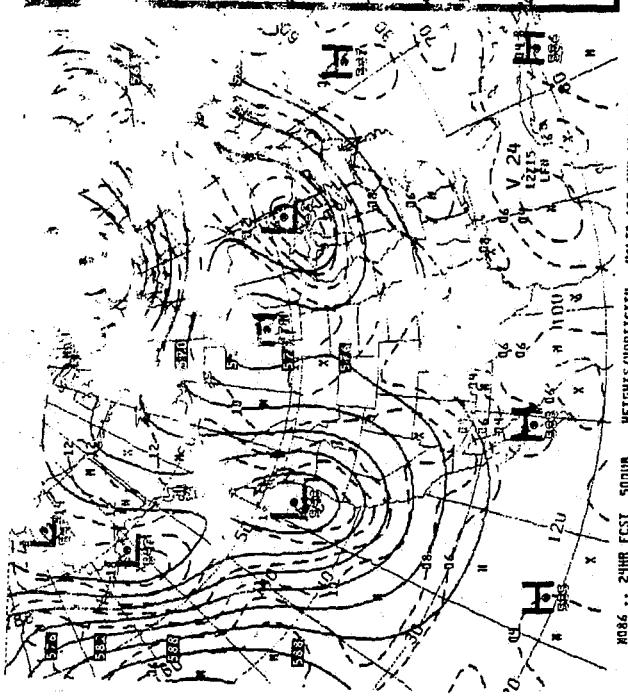


Figure 29. LFM 24-HR. FORECAST PANELS VALID 1200Z AUGUST 1976. BASED ON 12 HOURS LATER DATA THAN FIGURE 28.

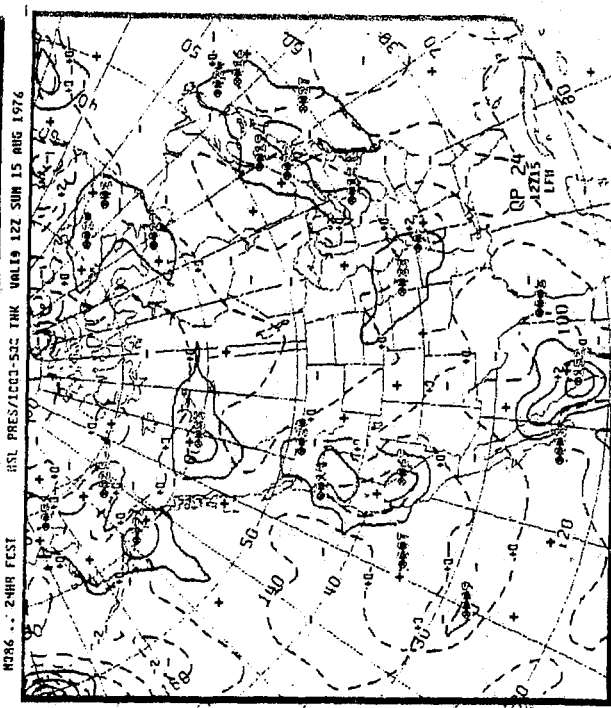
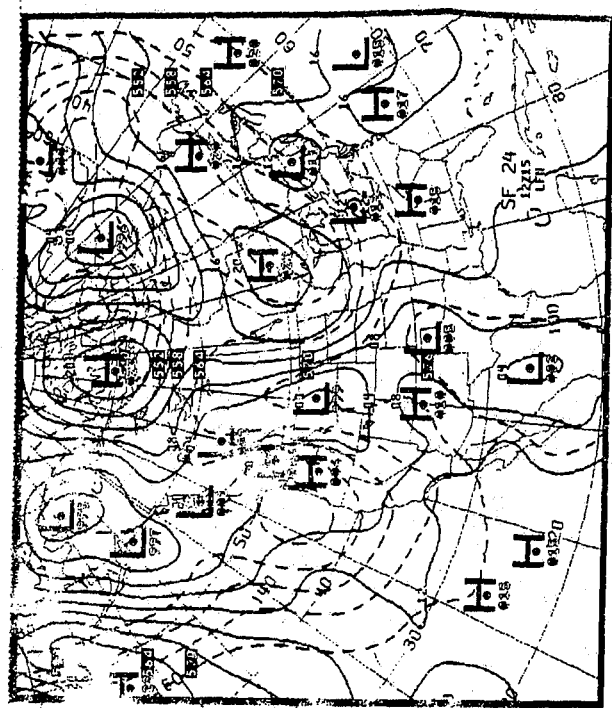


Figure 28. LFM 24-HR. FORECAST PANELS VALID 1200Z AUGUST 1976. BASED ON 12 HOURS LATER DATA THAN FIGURE 27.

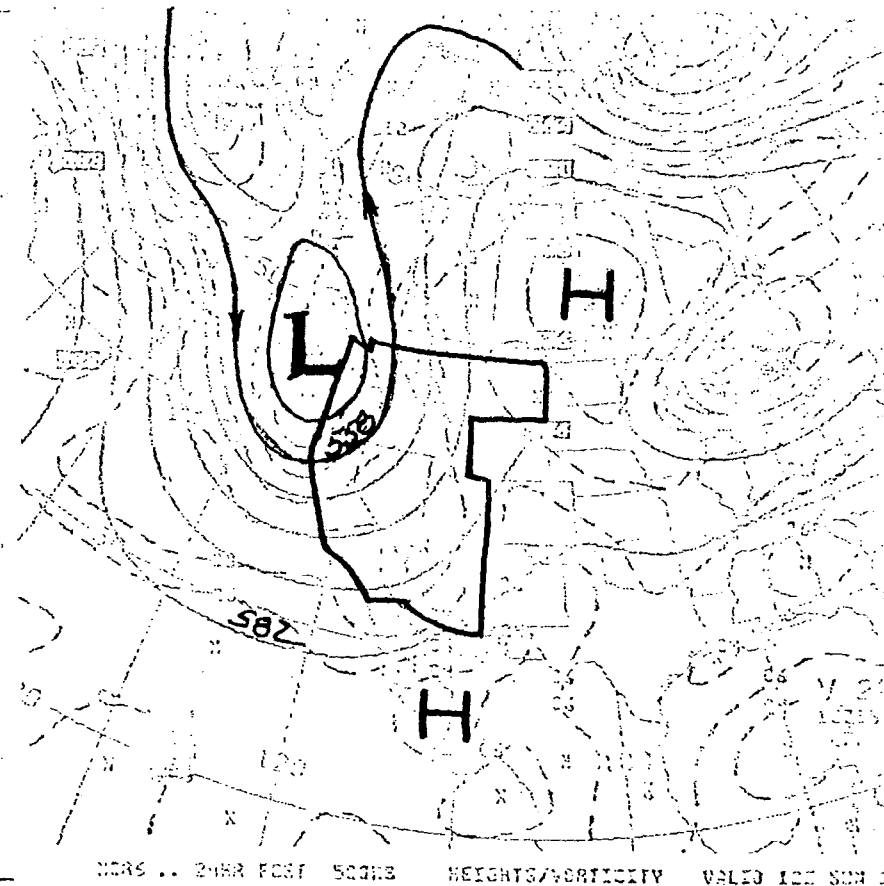
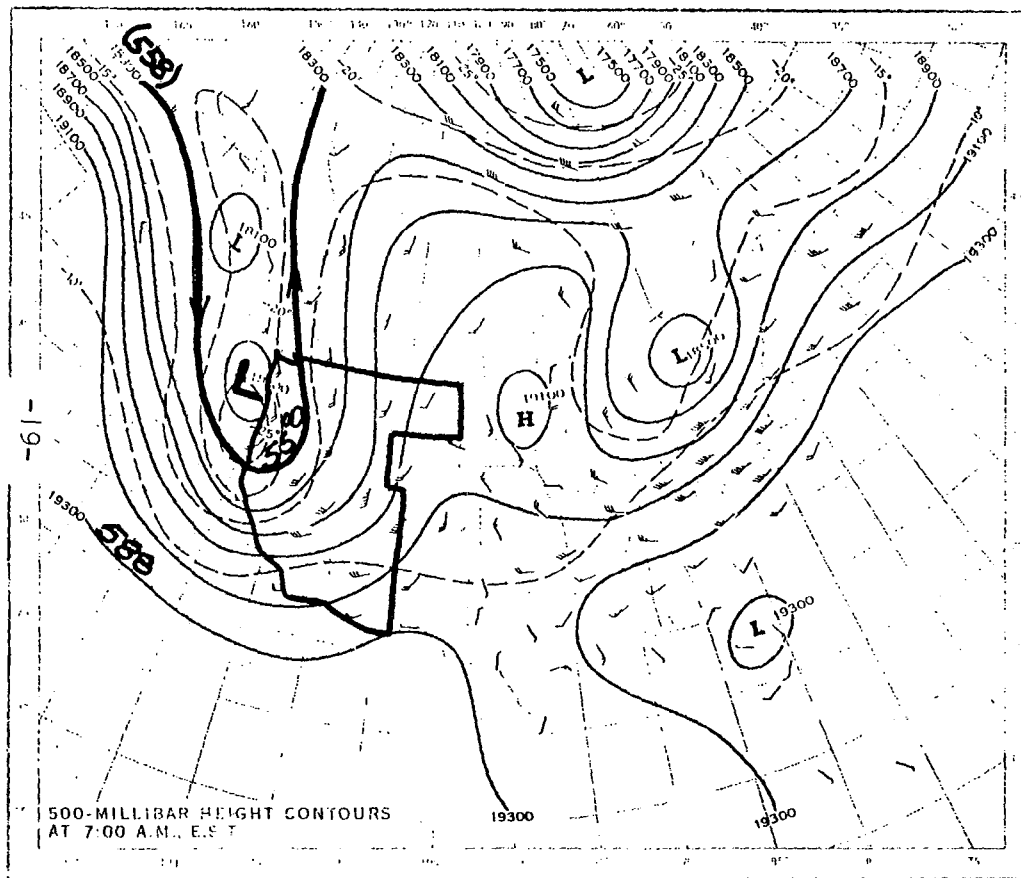
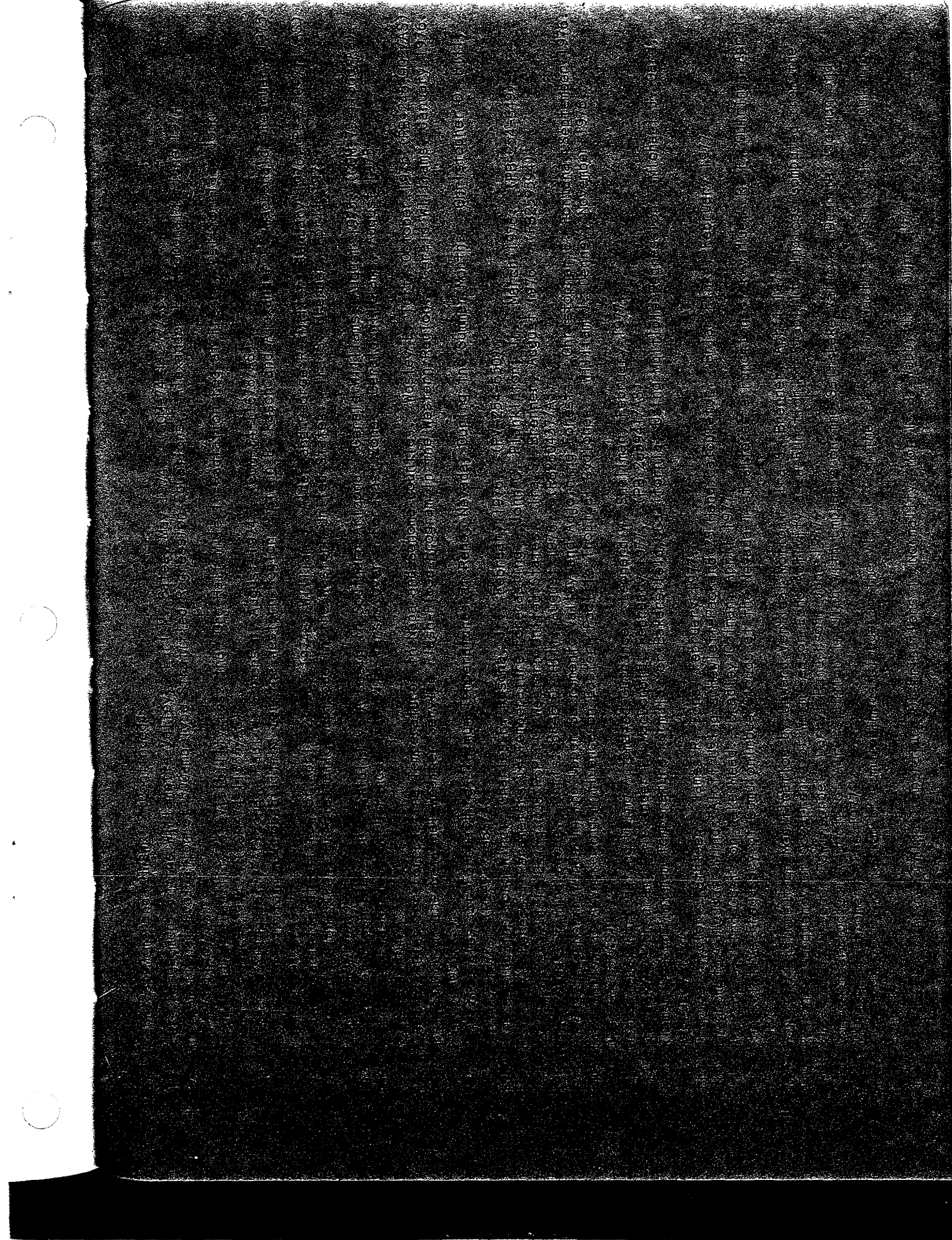


Figure 25. Verifying Analysis and 24-Hr. LFM 50-kPa Prognosis valid 12Z August 15, 1977.



NOAA SCIENTIFIC AND TECHNICAL PUBLICATIONS

NOAA, the *National Oceanic and Atmospheric Administration*, was established as an agency of the Department of Commerce on October 3, 1970. The mission and responsibilities of NOAA are to monitor and predict the overall condition of the oceans and atmosphere, to assess the natural resources, the atmosphere, and the space environment of the Earth and to assist in the economic, technical, and technological changes in this environment.

The operational components of NOAA regularly produce various types of scientific and technical information in the following kinds of publication:

PROFESSIONAL PAPERS—Important scientific research results, major techniques, and special techniques.

TECHNICAL REPORTS—Journal articles, symposia, and other analytical developments by individuals.

TECHNICAL MEMORANDUMS—Reports of preliminary, partial, or tentative research or technology results, internal instructions, and the like.

CONTRACT AND GRANT REPORTS—Reports prepared by contractors or grantees under NOAA sponsorship.

TECHNICAL SERVICE PUBLICATIONS—The publications containing data, observations, information, and outlook materials, technical manuals, training papers, planning reports, and information cards and microfiche technical publications.

ATLAS—Statistical or pictorial presentation of data, showing distribution of materials, observed and physical conditions of oceans and atmosphere, distribution of times and months, and other conditions, etc.



Information on availability of NOAA publications can be obtained from:
ENVIRONMENTAL SCIENCE INFORMATION CENTER
ENVIRONMENTAL DATA SERVICE
NATIONAL OCEANIC AND ATMOSPHERIC ADMINISTRATION
U.S. DEPARTMENT OF COMMERCE
1200 Wilcoxon Drive, Silver Spring, MD 20910
Telephone: 301/713-2000