

1800 UTC



1900 UTC



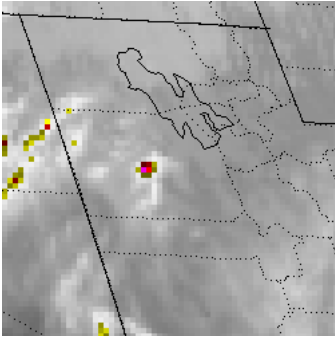
2000 UTC



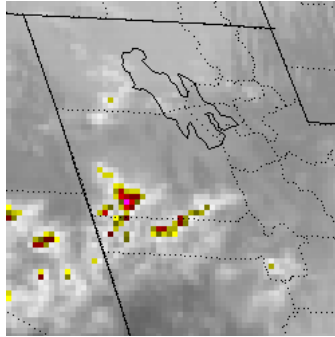
2100 UTC

2

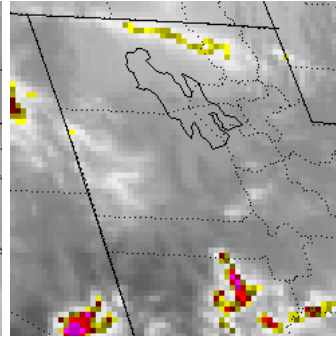
FIGURE 3. 4 km 11um (IR) imagery on 6 Feb 96 displayed at 1 km resolution



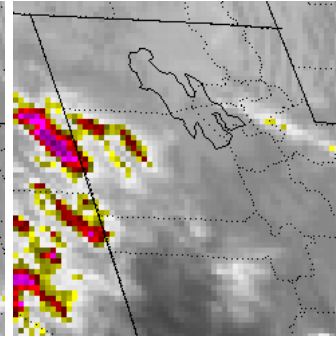
1800 UTC



1900 UTC



2000 UTC



2100 UTC

2

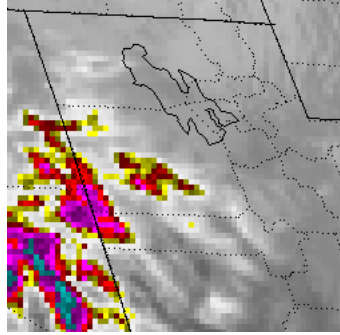
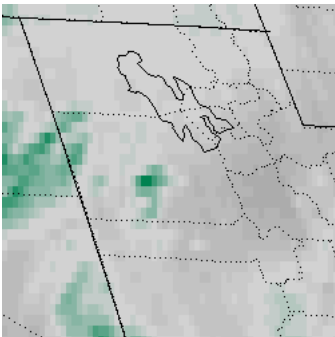
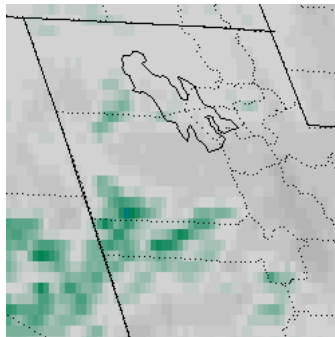


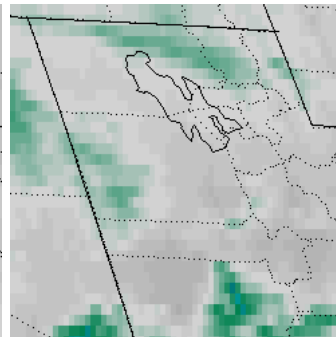
FIGURE 4. 4 km 6.7um (WV) imagery on 6 Feb 96 displayed at 1 km resolution



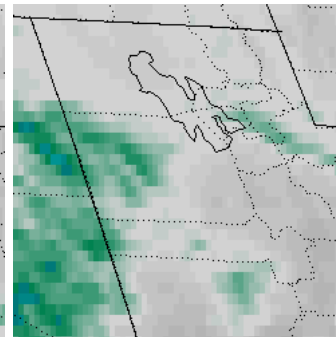
1800 UTC



1900 UTC



2000 UTC



2100 UTC

2

FIGURE 5. 1 km VIS imagery on 6 Feb 96 with surface weather observations

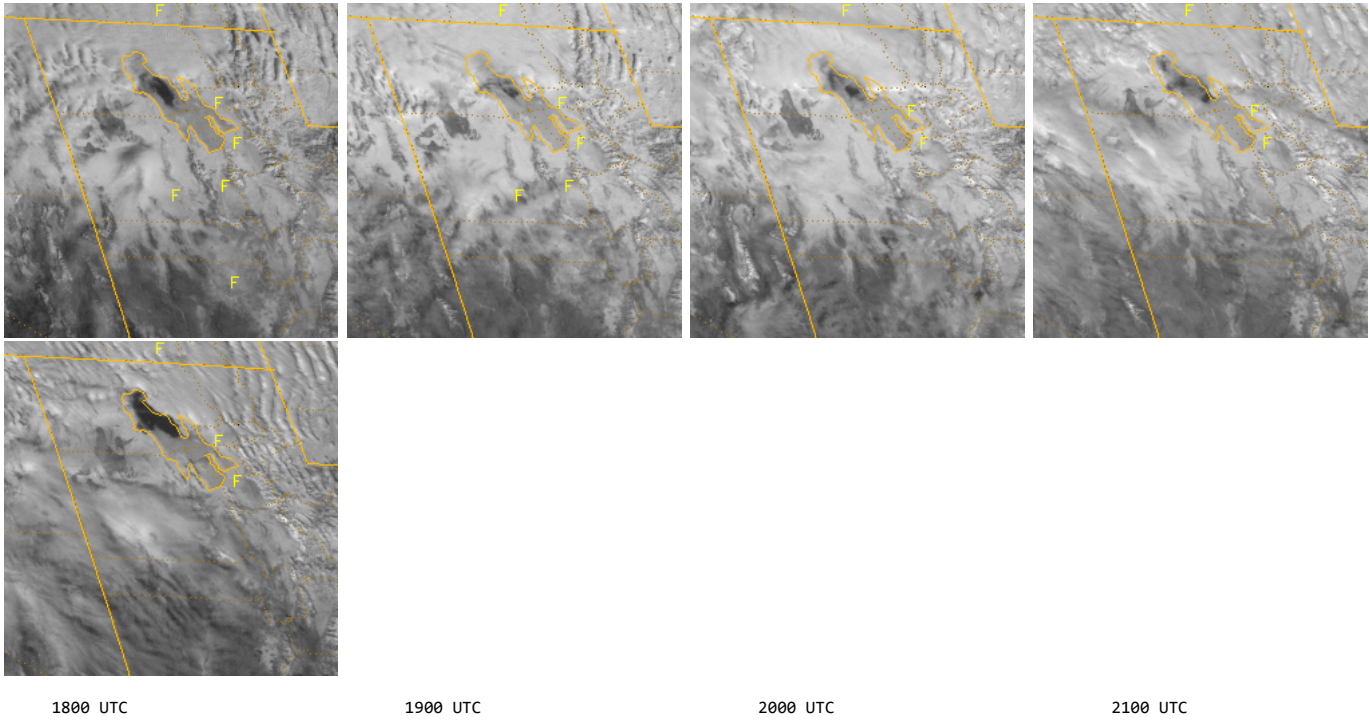
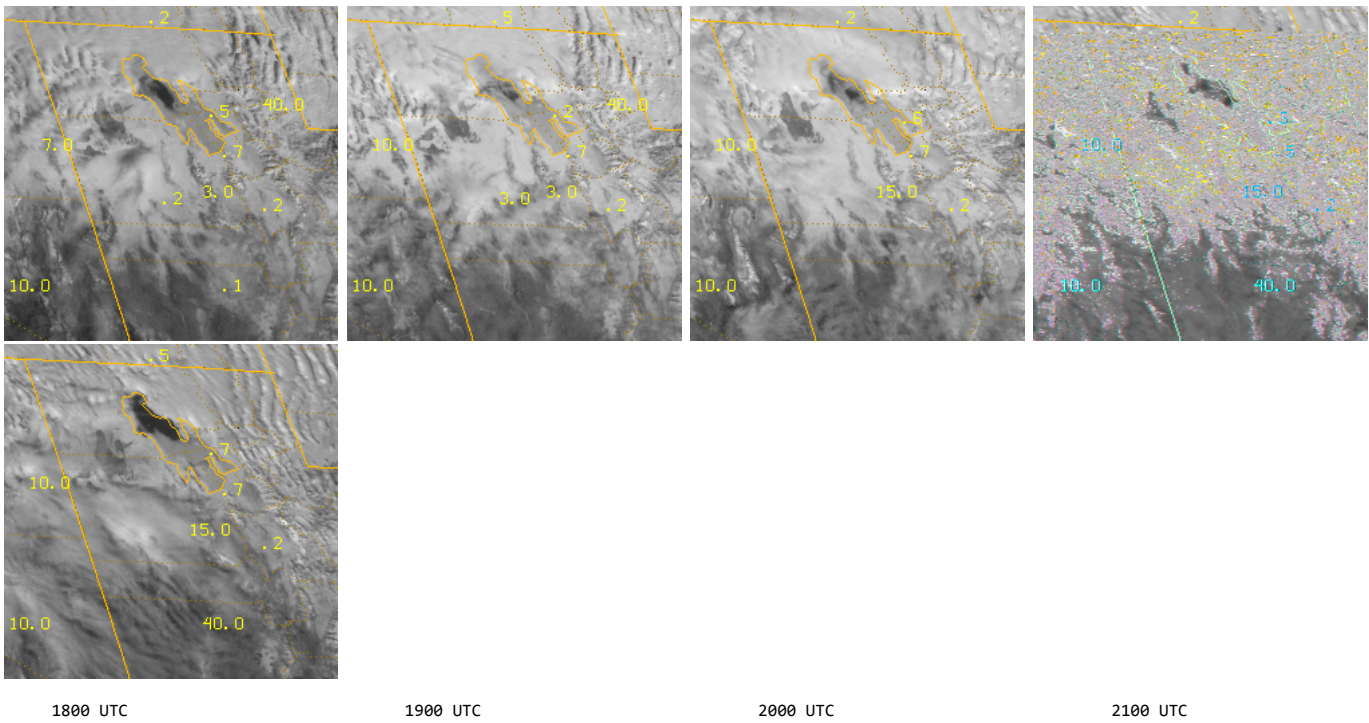


FIGURE 6. 1 km VIS imagery on 6 Feb 96 with reported visibilities (miles)



kschrab@smtpgate.ssmc.noaa.gov