

Figure 2

Conditions then dried out going into the 3rd week of the month with high pressure being the dominant factor. This period ended up being the driest week of 2014 with a state average of only 0.09 inches of precipitation. The break was short-lived as activity ramped back up heading into the end of March. A couple upper level disturbances passed through on the 24th and 25th. Temperatures were sufficiently cool and allowed for yet another late-season snow event. The second round was accompanied by gusty winds and resulted in poor visibilities at times. Temperatures then

proceeded to warm throughout the week, but precipitation stuck around. A cold front sparked an initial round of widespread rainfall on the 27th. This boundary then stalled across the region the next day, with low pressure overriding the front. Activity carried into Saturday and amounted to rainfall accumulations in excess of an inch for the 3 day period. Saying this, precipitation was still below normal for the month of March by three quarters of an inch. The monthly statistics for each climate division and the entirety of the state can be found in the table below.

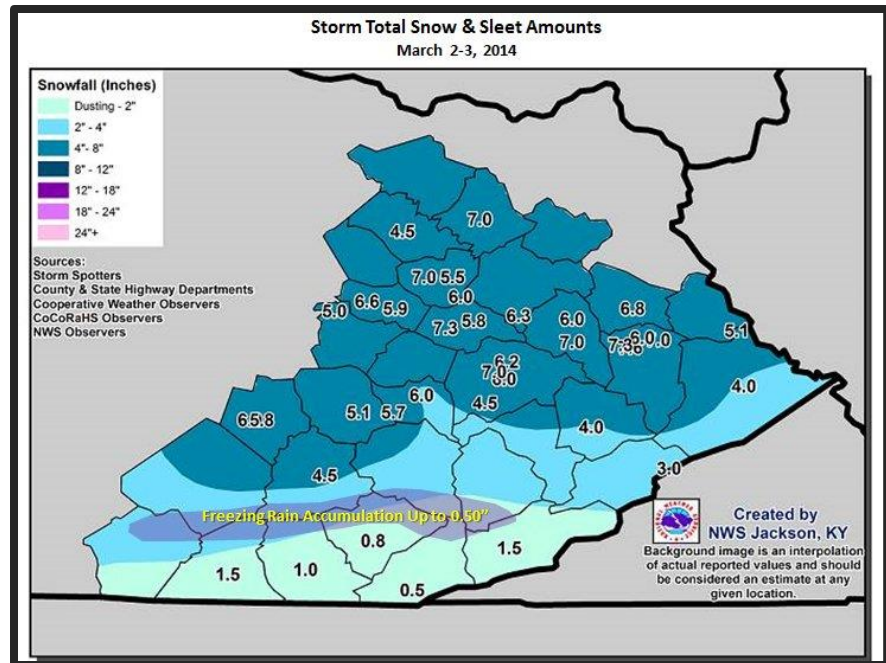


Figure 3

Summarized and averaged data for the period 20140301 to 20140331 (Last 31 Days)
 (Not for Legal purposes. Departure from Norms based on climate divisional Averages)

STATION	AIR TEMPERATURE						PRECIPITATION			ExtremeTemp	
	MAX	DEV	MIN	DEV	AVR	DEV	TOTAL	DEV	%NORM	HI	LO
WEST (CD1)	54	-6	33	-4	43	-5	4.06	-0.68	86	77	5
CENTRAL (CD2)	54	-4	32	-4	43	-4	3.63	-1.06	77	77	7
BLUEGRASS (CD3)	52	-4	30	-4	41	-4	2.80	-1.22	70	76	1
EAST (CD4)	54	-5	32	-1	43	-3	4.30	-0.05	99	78	-2
STATE	54	-4	32	-3	42	-4	3.70	-0.75	83	78	-2

Data obtained from KY Mesonet and NWS Station

Two Week Forecast

The start of the month has been extremely wet thus far, which in turn has put a halt to most field activities. Putting this into perspective, the state has averaged over 2.5 inches as of April 10th. The West and Bluegrass have seen the most with just over 3 inches on average, while this tapers farther east to an inch and a half.

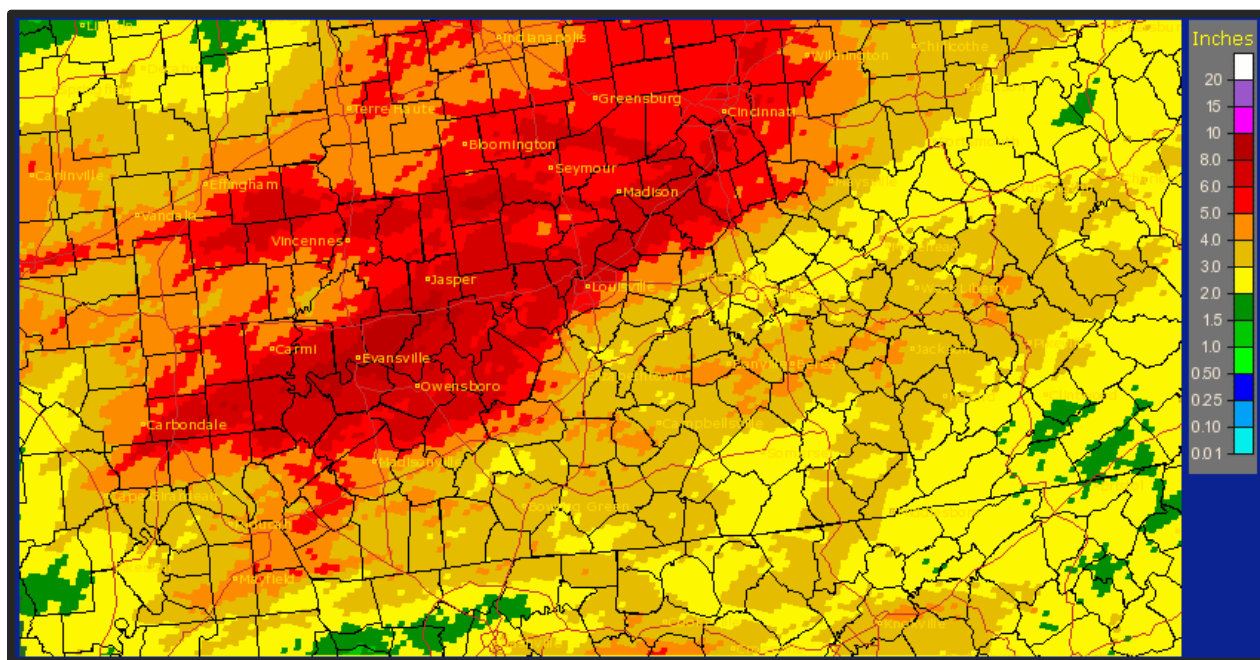


Figure 4

Figure 4 shows the significant amount precipitation that the Lower Ohio Valley has seen over the past 2 weeks. This amount of rain has generally saturated ground across the Bluegrass State with more yet to come. After this most recent round of rainfall (4/11), another cold front is expected to push through the Bluegrass State this upcoming Monday. Models are currently hinting at this system bringing another half to one inch of rainfall. Total precipitation is normally around 4 inches for the month of April.

The good news is that much of this upcoming weekend (4/12-4/13) will be dry and warmer. Southwesterly flow will bump temperatures back into the mid to upper 70s each day. The lower 80s is even a good bet on Sunday across the eastern half of the state as winds become breezy. Unfortunately, we do live in the Ohio Valley and are now placed in the transitional season of spring. Following the front's departure, much cooler air will move in for the midsection of next work week. Highs will only be the 50s on Tuesday and Wednesday, but the most concern is with temperatures Tuesday night and into the morning hours. Lows could potentially get into the upper 20s across Eastern Kentucky and low to mid 30s farther west. This will pose the first substantial threat to agriculture this spring season with the combination of peach trees blooming and corn beginning to go into the ground.

Looking farther out into the future, outlooks are leaning at below normal temperatures continuing across the state through at least the 24th. Through the second half of April, high temperatures normally run in the upper 60s to low 70s, as lows dip into the upper 40s to low 50s. Precipitation is also expected to be near to below normal. The 3 month outlook through June then places the Commonwealth in a period of near normal temperatures and rainfall.

Three Month Outlook (AMJ)
**Near Normal Precipitation
and Temperatures**

Spring Freeze / Frost Occurrence Data

Background: The table below was developed for major cities across the state of Kentucky based on the 1981-2010 Climate Normals. This information can aid in knowing when to plant or harvest various crops, fruit, or vegetables across the Bluegrass State. The probability level is used in a way that 90%, 50%, or 10% displays the percentage that the threshold temperature will occur after the respective date. Also included are the earliest and latest dates that a particular threshold temperature has occurred at each location over the time-span.

Sources: National Climatic Data Center (NCDC), Midwestern Regional Climate Center (MRCC), UK Ag Weather Center (UKAWC)

Station Name	Threshold (F°)	Spring (Date)				
		Probability Level				
		Earliest	90	50	10	Latest
Ashland	36	Apr11	Apr19	May08	May27	Jul02
	32	Apr10	Apr11	May02	May21	Jun10
	28	Mar25	Apr07	Apr15	May14	May25
Barbourville	36	Apr10	Apr13	Apr29	May14	May22
	32	Mar25	Apr02	Apr18	May07	May22
	28	Mar19	Mar22	Apr06	Apr18	Apr30
Bowling Green AP	36	Mar30	Apr05	Apr17	May03	May21
	32	Mar19	Mar26	Apr05	Apr18	Apr22
	28	Feb22	Mar06	Mar27	Apr09	Apr19
Cincinnati Covington AP	36	Apr09	Apr13	Apr27	May09	May21
	32	Mar29	Apr03	Apr19	May03	May18
	28	Mar18	Mar23	Apr04	Apr17	Apr22
Jackson Julian Carroll AP	36	Apr01	Apr05	Apr18	May13	May18
	32	Mar21	Mar26	Apr08	Apr23	May15
	28	Feb14	Mar11	Mar30	Apr10	Apr22
Lexington Blue Grass AP	36	Apr05	Apr10	Apr26	May07	May18
	32	Mar27	Apr03	Apr11	Apr26	May18
	28	Feb14	Mar11	Apr03	Apr17	Apr22
Louisville International AP	36	Mar28	Mar31	Apr11	Apr23	May06
	32	Mar14	Mar23	Apr03	Apr17	Apr22
	28	Feb11	Mar09	Mar21	Apr09	Apr22
Paducah Barkley Regional AP	36	Mar29	Apr05	Apr17	May01	May15
	32	Mar06	Mar27	Apr08	Apr20	Apr27
	28	Mar03	Mar10	Mar27	Apr09	Apr19
Princeton 1 SE	36	Mar30	Apr01	Apr21	May10	May15
	32	Mar06	Mar26	Apr09	Apr27	May02
	28	Feb29	Mar09	Apr02	Apr14	Apr19
Somerset 2 N	36	April08	Apr10	Apr30	May13	May21
	32	Mar24	Apr01	Apr18	May11	May18
	28	Feb26	Mar24	Apr09	Apr21	May03
West Liberty 3 NW	36	Apr19	May03	May13	Jun06	Jun10
	32	Apr06	Apr11	May03	May22	May27
	28	Apr02	Apr07	Apr19	May10	May22
Williamsburg	36	Apr10	Apr13	Apr28	May16	May22
	32	Mar29	Mar31	Apr18	May01	May10
	28	Mar22	Mar27	Apr05	Apr20	Apr26

Average Date:



The UK Ag Weather Center has joined social media. Click [here](#) and 'Like' our new Facebook page or follow us [@UKAGweather](#) on Twitter.



April Safe Planting Dates					
	Earliest Safe Planting Date			Earliest Safe Planting Date	
	Date	Location		Date	Location
Asparagus (crowns)	----	---	Lettuce (leaf)	April 1 st	Eastern Mt.
Beans (snap)	April 10 th April 25 th	Western Central	Lettuce (bibb plants)	April 1 st	Eastern Mt.
Beans (lima)	April 15 th	Western	Lettuce (head plants)	April 1 st	Eastern Mt.
Broccoli (plants)	April 5 th April 10 th	Central Eastern Mt.	Onions (plants)	April 1 st	Eastern Mt.
Brussels Sprouts (plants)	April 5 th April 10 th	Central Eastern Mt.	Onions (seed)	April 1 st	Eastern Mt.
Cabbage	April 1 st	Eastern Mt.	Parsley	April 1 st	Eastern Mt.
Carrots	April 1 st	Eastern Mt.	Parsnips	April 1 st	Eastern Mt.
Cauliflower (plants)	April 5 th April 10 th	Central Eastern Mt.	Pumpkins	April 20 th	Western
Celery	April 1 st April 5 th April 10 th	Western Central Eastern Mt.	Southern Peas	April 20 th	Western
Chard	April 1 st	Eastern Mt.	Summer Squash	April 20 th	Western
Sweet Corn	April 10 th April 20 th	Western Central	Tomatoes (plants)	April 20 th	Western
Cucumbers	April 20 th	Western	Watermelons	April 20 th	Western
Kale	April 1 st	Eastern Mt.	Winter Squash	April 20 th	Western

April Vegetable Gardner's Calendar for Western Kentucky	
April 1st	- Move transplants to garden for BROCCOLI, CAULIFLOWER, COLLARDS, LETTUCE, CHINESE CABBAGE, SWISS CHARD, and ONIONS FROM SEEDS. - Start seeds outdoors for SPINACH, MUSTARD, RADISHES, LETTUCE, and SWISS CHARD
April 5th	- Start seeds indoors for MUSKMELONS, WATERMELONS, and SQUASH - Start seeds outdoors for SWEET CORN, BEETS, CARROTS, MUSTARD, SPINACH, RADISHES, and LETTUCE.
NOTE: Add 10 days for Central KY and 15 for Eastern KY to these dates for spring and summer crops.	

April Crop Operations				
	First Week	Second Week	Third Week	Fourth Week
Small Grains	Wheat about 5' tall	----	----	50% of Barley heading
Soybeans	----	----	----	----
Tobacco	75% of beds seeded 20% of bed plants emerged	----	All beds are seeded 50% of bed plants emerging	90% of plants emerged
Corn	----	Planting BEGINS 5% done	16% of crop planted	25% of crop planted
General Farm Operations	----	----	Plowing for all crops 60% complete	----

April Beef Operations	
Spring Calving Herd	<ul style="list-style-type: none"> Continue providing magnesium in the mineral mix until daytime temperatures are consistently above 60 degrees.
Fall Calving Herd	<ul style="list-style-type: none"> Pre-weaning period
All Cattle	<ul style="list-style-type: none"> Continue providing magnesium in the mineral mix until daytime temperatures are consistently above 60 degrees.
Forages	<ul style="list-style-type: none"> Complete seeding of alfalfa Determine need for supplemental forages such as millet Prepare for start of hay harvest Prepare fencing and water for grazing season and BEGIN grazing early pastures Plant corn for silage and warm season grasses if weather allows Assess opportunity for weed control using recommended herbicides (always read and follow label recommendations).