



# Broadleaf Weeds of Kentucky Pastures

J.D. Green, Plant and Soil Sciences



Spiny Amaranth



Buttercup



Cocklebur



Horsenettle



Tall Ironweed



Hemp Dogbane



Poison Hemlock



Marshelder



Common Milkweed



Jimsonweed



Sericea Lespedeza



Maypop Passionflower



Buckhorn Plantain



Perilla Mint



Multiflora Rose



Trumpet creeper



Canada Thistle



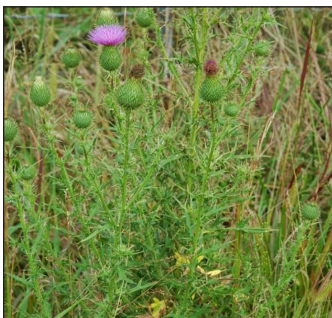
Common Ragweed



Lanceleaf Ragweed



Wild Carrot



Bull Thistle



Musk Thistle



Curly Dock



Chicory

# Response of Pasture Weeds to Herbicides and Mowing

Weed Species	Life Cycle <sup>1</sup>	Preferred Time for Herbicide Treatment <sup>2</sup>	2,4-D (various products)	dicamba (Clarity, etc.)	dicamba + 2,4-D (Weedmaster etc.)	Crossbow	PastureGard	DuraCor	GrazoneX	Chaparral <sup>3</sup>	metsulfuron <sup>3</sup> (MSM60, Patriot, etc.)	Sharpen	MOWING <sup>4</sup>
Amaranth, Spiny (Pigweed)	A	May-July	F/G	F/G	G	G	F/G	G	G	G	G	-	X
Aster spp. (White Heath Aster)	A	July-Sept	F/G	G	G	G	-	-	-	-	F	P	R
Burdock, Common	B	Feb-Mar	G	F	G	G	G	G	G	G	F	P	R
Buttercup spp.	A	Feb-Mar	G	F/G	G	G	F	G	G	G	G	P/F	X
Carrot, Wild (Queen Anne's Lace)	B	May-June	F/G	F/G	F/G	F/G	F	G	G	G	G	P	R
Chickweed, Common	A	Nov or Feb-Mar	P	F/G	G	F	G	G	G	G	G	P/F	X
Chicory	P	Feb-Mar or Aug-Nov	F/G	F/G	G	G	G	G	G	G	F/G	P	R
Clover, White	P	May-Aug	F	G	G	G	G	G	G	G	G	P	X
Cocklebur, Common	A	May-July	G	G	G	G	G	G	G	G	G	G	R
Dandelion	P	Oct-Nov or Mar-Apr	G	G	G	G	F/G	G	G	G	G	P	X
Deadnettle, Purple	A	Feb-Mar	P	F/G	G	F	G	G	G	G	G	-	X
Dock, Curly or Broadleaf	P	Feb-Apr	P/F	F	F/G	G	F/G	G	G	G	G	P	X
Dogbane, Hemp	P	May-Aug	P/F	F	F	G	G	P/F	P/F	P/F	P	P	S
Garlic, Wild	P	Nov or Mar-Apr	F	F	F	F	P	F	F	F/G	G	P	X
Goldenrod spp.	P	June-Aug	F	F/G	F/G	G	F	F	F/G	F/G	P	P	S
Hemlock, Poison	B	Nov or Mar-Apr	F/G	F/G	F/G	F/G	P	F/G	F/G	-	F	P	R
Henbit	A	Feb-Mar	P	F/G	G	F	F/G	G	G	G	G	-	X
Horsenettle	P	July-Aug	P	P/F	F	F	P/F	G	G	F/G	F	P	X
Ironweed, Tall	P	June-Aug	P	F	F	G	G	G	G	G	P	P	S
Jimsonweed	A	May-July	F	G	G	G	-	G	G	G	-	-	R
Lespedeza, Sericea	P	June-July	P	P/F	P/F	G	G	P/F	P/F	F/G	F/G	P	X
Marshelder (Sumpweed)	A	May-July	F/G	F/G	G	G	F	G	G	G	F	-	R
Milkweed, Common	P	July-Sept	P	F	P/F	F	P/F	P/F	P/F	P/F	P	P	S
Mint, Perilla	A	May-July	F	F	F/G	G	F/G	G	G	G	-	-	S
Multiflora Rose	P	Apr-June or Sept	P	P	F	G	G	F	F	F/G	G	P	X
Passionflower, Maypop	P	May-July	P	P	P	P/F	F	P	P	P	-	P	X
Plantain, Broadleaf or Buckhorn	P	Oct-Nov or Mar-Apr	F/G	F	F/G	G	F	G	F/G	F/G	F/G	P	X
Pokeweed, Common	P	May-July	F	F/G	F/G	F/G	P	F/G	F/G	F	P	P	S
Ragweed, Common	A	May-July	F/G	G	G	G	G	G	G	G	P	G	R
Ragweed, Lanceleaf	A	May-July	F/G	G	G	G	-	G	G	-	P	-	R
Sida, Arrowleaf	A	May-July	P	P	P	-	-	F	F	F	-	-	R
Sneezeweed, Bitter	A	May-July	F/G	F/G	G	G	G	G	G	G	-	-	R
Sorrel, Red (Sheep Sorrel)	P	Sept-Nov or Mar	P	F	F/G	F/G	F	-	-	F/G	F/G	P	X
Spurge, Nodding	A	June-July	P	P	P	P/F	-	P/F	P/F	G	G	-	R
Thistle, Bull	B	Oct-Nov or Feb-Mar	G	G	G	G	F/G	G	G	G	F/G	P	R
Thistle, Canada	P	Prebud or Oct-Nov	P	P/F	F	F	P/F	G	G	G	F	p	S
Thistle, Musk	B	Oct-Nov or Feb-Mar	G	G	G	G	F/G	G	G	G	F/G	P	R
Thistle, Plumeless	B	Oct-Nov or Feb-Mar	G	G	G	G	F/G	G	G	G	F/G	P	R
Tickclover (Desmodium spp.)	P	June-Aug	P	-	F	F/G	F/G	F/G	F/G	-	-	P	R
Trumpet creeper	P	Aug-Sept	P	P	P/F	F	F	P	P	-	P	P	X

Control: **G** = Good or Excellent; **F** = Fair (suppression or partial control); **P** = Poor; - = No Information

<sup>1</sup> Life Cycle: **A** = Annuals; **P** = Perennials; **B** = Biennials

<sup>2</sup> The preferred time for herbicide treatment will depend on environmental conditions and other factors.

<sup>3</sup> May cause temporary yellowing, stunting and seedhead suppression of tall fescue (consult label). Metsulfuron is an active ingredient in several products (e.g. Chaparral, MSM60, Patriot, Purestand).

<sup>4</sup> Mowing: **R** = Timely mowing reduces top growth and seed production; **S** = Suppression of top growth; **X** = Not very effective

**Note:** This table should be used only as a guide for comparing the relative effectiveness of herbicides to a particular weed. The herbicide may perform better or worse than indicated in the table depending on the species, weed size, time of application, and/or extreme weather conditions. Consult herbicide label for weed height or growth stage and product amount. Read and follow all label directions and precautions before herbicide application.

Adapted from *Weed Management in Grass Pastures, Hayfields, and Other Farmstead Sites* (AGR-172; revised 3-2021). Available at <http://ww2.ca.uky.edu/agcomm/pubs/agr/agr172/agr172.pdf>.

Listing of pesticide products implies no endorsement by the University of Kentucky or its representatives. Criticism of products not listed is neither implied nor intended.

Educational programs of Kentucky Cooperative Extension serve all people regardless of economic or social status and will not discriminate on the basis of race, color, ethnic origin, national origin, creed, religion, political belief, sex, sexual orientation, gender identity, gender expression, pregnancy, marital status, genetic information, age, veteran status, or physical or mental disability. Issued in furtherance of Cooperative Extension work, Acts of May 8 and June 30, 1914, in cooperation with the U.S. Department of Agriculture, Nancy M. Cox, Director of Cooperative Extension Programs, University of Kentucky College of Agriculture, Food and Environment, Lexington, and Kentucky State University, Frankfort. Copyright © 2021 for materials developed by University of Kentucky Cooperative Extension. This publication may be reproduced in portions or its entirety for educational or nonprofit purposes only. Permitted users shall give credit to the author(s) and include this copyright notice. Publications are also available on the World Wide Web at [www.ca.uky.edu](http://www.ca.uky.edu).

Revised 3-2021