

Recovery Plan for Laurel Wilt on Redbay and Other Forest Species



Albert E. “Bud” Mayfield III
USDA Forest Service, Southern Research Station



NPDRS Workshop March 6-8, 2011 Dallas, TX

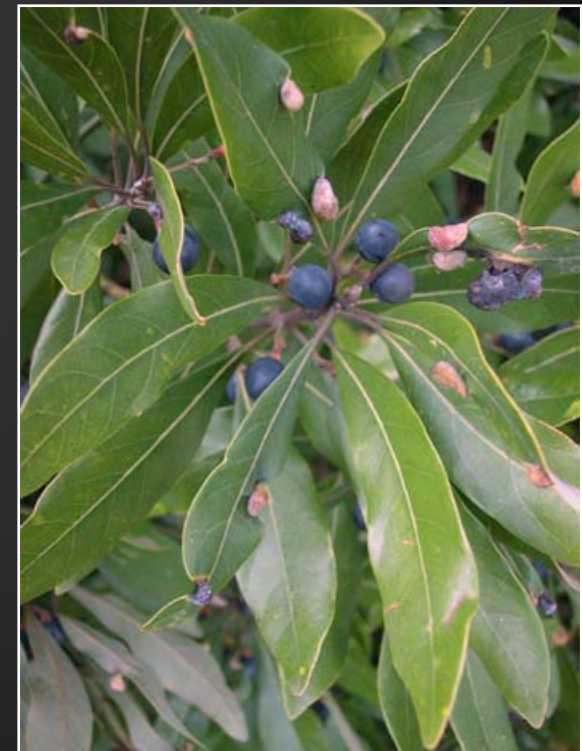
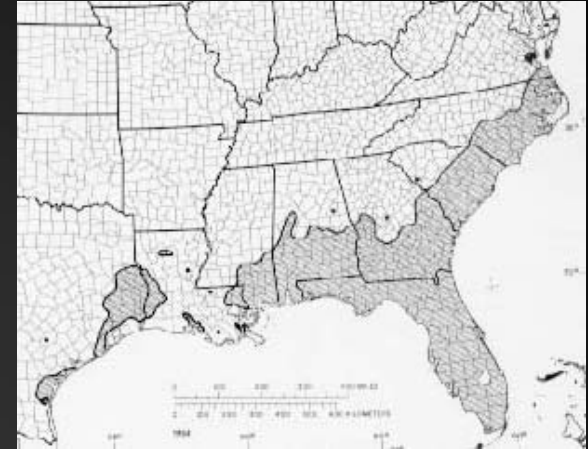
Recovery Plan Contributors

- A. Mayfield, USDA-FS
- E. Barnard, Florida Div. For.
- T. Harrington, Iowa St. Univ.
- S. Fraedrich USDA-FS
- J. Hanula USDA-FS
- V. Vankus , USDA-FS
- R. Rabaglia, USDA-FS
- Don Duerr , USDA-FS
- Russ Bulluck, USDA-APHIS:
- J. Johnson, GA For. Comm.
- C. Bates, GA For. Comm.
- S. Cameron, GA For. Comm.
- J. Smith, Univ. Florida
- J. Peña, Univ. Florida
- Faith Campbell, TNC
- A. Boone,
DendroDiagnostics, Inc.
- Additional Acknowledgments: Kent Smith (USDA ARS),
Michigan State University

So, what is a redbay?

Persea borbonia (Lauraceae)

- Aromatic, broadleaved, evergreen of the US Southeastern Coastal Plain

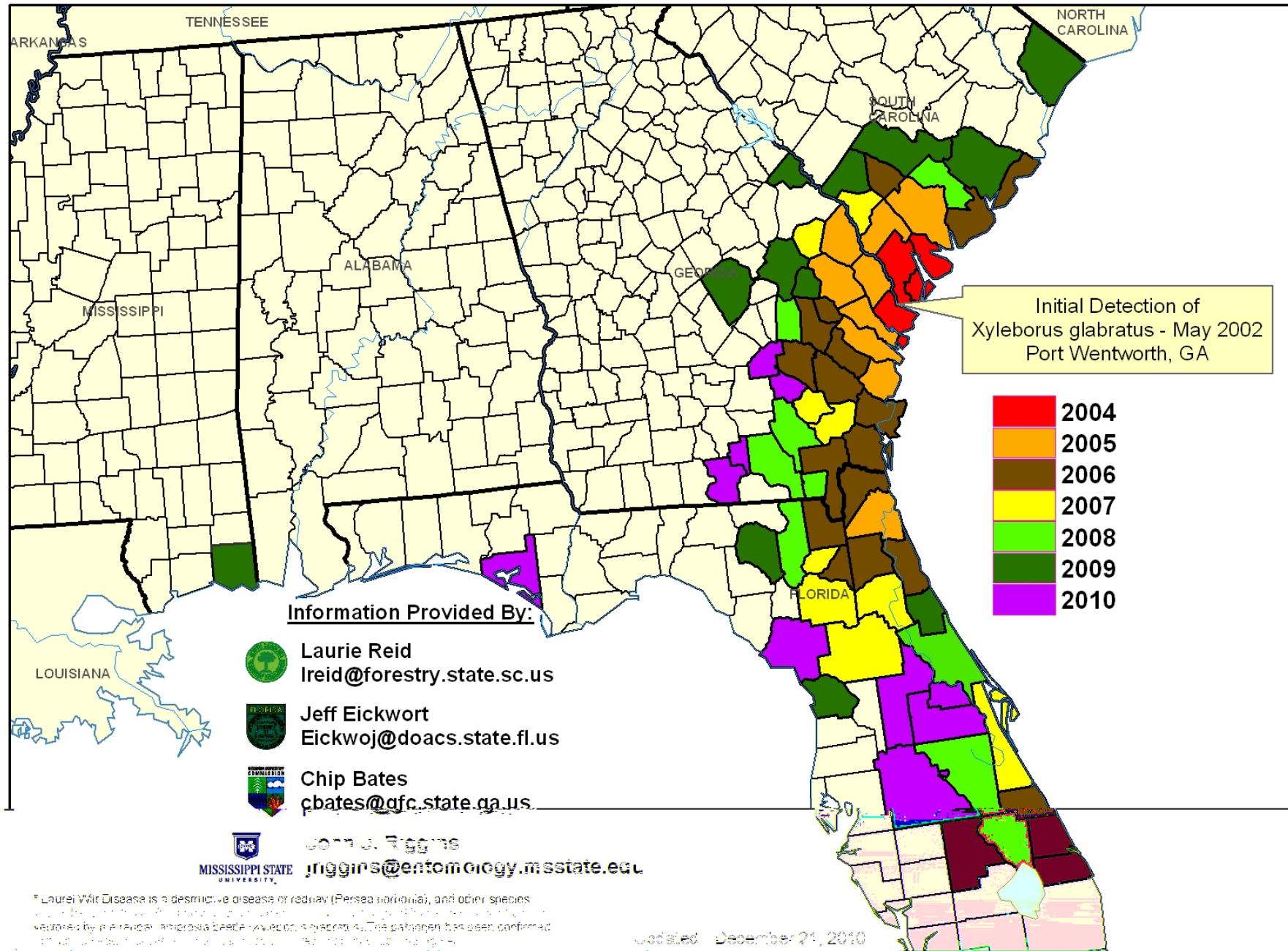


© USC Herbarium Photo by Linda Lee

Brief History of Laurel Wilt

- 2002: An Asian ambrosia beetle (*Xyleborus glabratus*) detected near Savannah, GA
- 2004-2005: Beetle determined to be vector of fungus (*Raffaelea lauricola*) causing wilt disease, widespread redbay mortality (SC, GA, FL)
- 2005-2011: continued range expansion in Southeastern US





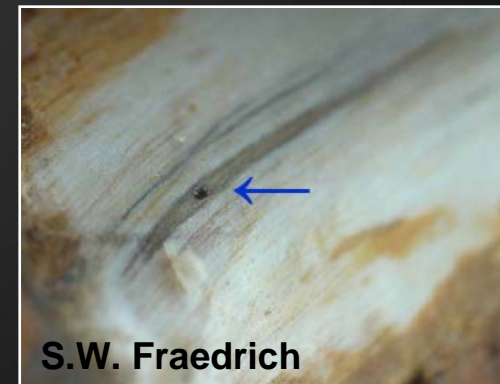
Redbay Ambrosia Beetle (*Xyleborus glabratus*)



- Native to India, Bangladesh, Myanmar, Taiwan, Japan
- Reported Asian host families (genera):
 - Lauraceae (*Lindera, Litsea, Phoebe*)
 - Dipterocarpaceae (*Shorea*)
 - Fagaceae (*Lithocarpus*)
 - Fabaceae (*Leucaena*)

Redbay Ambrosia Beetle (*Xyleborus glabratus*)

- Coleoptera: Curculionidae: Scolytinae
- Symbiont fungi, mandibular mycangia
- Partial parthenogenesis, sib mating



Laurel Wilt: Crown Symptoms



Laurel Wilt: Stem Symptoms



Impact



Mixed maritime forests



Coastal dunes



Bayhead swamps



Neighborhoods

Confirmed Laurel Wilt Hosts Plants in US

Confirmed in the field:

- Redbay (*Persea borbonia*)¹
- Swamp bay (*Persea palustris*)¹
- Sassafras (*Sassafras albidum*)¹
- Pondspice (*Litsea aestivalis*)¹ - endangered
- Pondberry (*Lindera melissifolia*)¹ - endangered
- Camphor (*Cinnamomum camphora*)³
- Avocado (*Persea americana*)²



Recovery Plan: Executive Summary

- Slow the long distance, human-assisted spread of the disease.
- Improve our understanding of the biology, host associations, and impacts of the disease and its vector.
- Protect individual, high-value landscape trees with pesticides when feasible and continue research on treatment efficacy and options.

Recovery Plan: Executive Summary

- Develop other management tools:
 - Sanitation and other silvicultural methods
 - Trap-out or attract-and-kill techniques
 - Use of resistant genotypes
 - Biological control
- Assess the need for a germplasm conservation program for threatened hosts.
- Continue to monitor the geographic spread of the disease, assess its impacts on host species as it spreads to new ecosystems, and educate the public about the issue.

USFS Laurel Wilt Website:

www.fs.fed.us/r8/foresthealth/laurelwilt

Thank you

Bud Mayfield, Research Entomologist

USDA Forest Service , Southern Research Station

Asheville, NC 28806 amayfield02@fs.fed.us