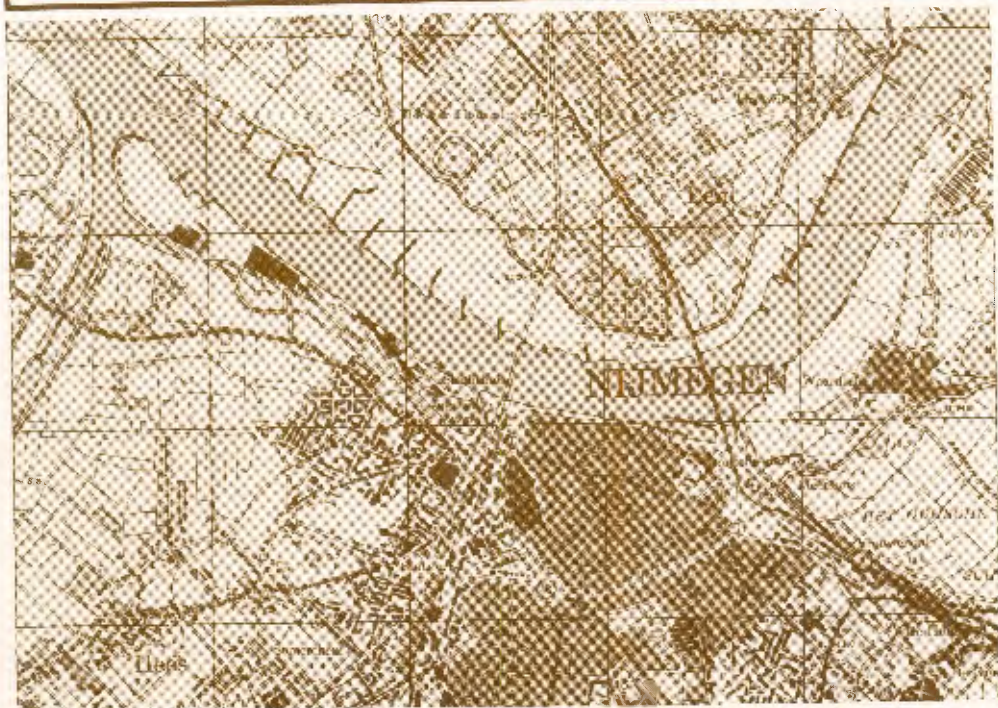


World War II Records in the Cartographic and Architectural Branch of the National Archives



Reference Information Paper 79

National Archives and Records Administration
Washington, DC
1992

**World War II Records
in the Cartographic and Architectural Branch
of the National Archives**

Reference Information Paper 79

Compiled by Daryl Bottoms

National Archives and Records Administration
Washington, DC
1992

TABLE OF CONTENTS

<u>Contents</u>	<u>Page</u>
Preface	v
Introduction	vi
Federal Records (Described in order of Record Group Number)	
Record Group	
16 Records of the Office of the Secretary of Agriculture	1
18 Records of the Army Air Forces	1
19 Records of the Bureau of Ships	2
23 Records of the Coast and Geodetic Survey	3
26 Records of the United States Coast Guard	4
31 Records of the Federal Housing Administration	4
37 Records of the Hydrographic Office)	4
38 Records of the Office of the Chief of Naval Operations	7
43 Records of International Conferences, Commissions, and Expositions	7
45 Naval Records Collection of the Office of Naval Records and Library	8
51 Records of the Office of Management and Budget	8
57 Records of the Geological Survey	8
59 General Records of the Department of State	9
66 Records of the Commissions of Fine Arts	10
71 Records of the Bureau of Yards and Docks	10
72 Records of the Bureau of Aeronautics	11
74 Records of the Bureau of Ordnance	12
77 Records of the Office of the Chief of Engineers	12
80 General Records of the Department of the Navy	16
84 Records of the Foreign Service Posts of the Department of State (RG 84)	16
92 Records of the Office of the Quartermaster General	16
95 Records of the Forest Service	17
111 Records of the Office of the Chief Signal Officer	17
112 Records of the Office of the Surgeon General (Army)	17
127 Records of the United States Marine Corps	18
131 Records of the Office of Alien Property	18
156 Records of the Office of the Chief of Ordnance	18
160 Records of Headquarters Army Service Forces	19
165 Records of the War Department General and Special Staffs	19
169 Records of the Foreign Economic Administration	20
171 Records of the Office of Civilian Defense	21

173	Records of the Federal Communications Commission	21
175	Records of the Chemical Warfare Service	21
177	Records of the Chiefs of Arms	21
178	Records of the United States Maritime Commission	22
179	Records of the War Production Board	22
187	Records of the National Resources Planning Board	22
196	Records of the Public Housing Administration	22
210	Records of the War Relocation Authority	23
215	Records of the Office of Community War Services	23
219	Records of the Office of Defense Transportation	23
224	Records of the Office of Labor (War Food Administration)	24
226	Records of the Office of Strategic Services	24
227	Records of the Office of Scientific Research and Development	25
234	Records of the Reconstruction Finance Corporation	25
239	Records of the American Commission for the Protection and Salvage of Artistic and Historic Monuments in War Areas	33
242	National Archives Collection of Foreign Records Seized, 1941-	34
243	Records of the United States Strategic Bombing Survey	37
253	Records of the Petroleum Administration for War	37
260	Records of the United States Occupation Headquarters, World War II	38
289	Records of the Naval Intelligence Command	38
313	Records of Naval Operating Forces	39
319	Records of the Army Staff	40
324	Records of the Board on Geographic Names	43
331	Records of the Allied Operational and Occupation Headquarters, World War II (RG 331)	43
332	Records of the United States Theaters of War, World War II	47
336	Records of the Office of Chief of Transportation	50
337	Records of the Headquarters, Army Ground Forces	50
338	Records of United States Army Commands, 1942-	50
373	Records of the Defense Intelligence Agency	51
391	Records of United States Regular Army Mobile Units, 1821-1942	53
395	Records of United States Army Overseas Operations and Commands, 1898-1943	53
407	Records of the Adjutant General's Office, 1917-	53
457	Records of the National Security Agency/Central Security Office	57
	Donated Materials	58
	<i>Abbreviations</i>	59

<i>Glossary</i>	61
<i>Index</i>	66
<i>Illustrations</i>	
<u><i>Charts.</i></u> <i>Nautical field chart for the western coast of Guam.</i>	26
<u><i>Target Charts.</i></u> <i>Chart of a Japanese airfield on New Ireland Island.</i>	27
<u><i>Engineering Plans-Ship Plans.</i></u> <i>Plans for the submarine, U.S.S. Sturgeon (SS-187).</i>	28
<u><i>Thematic Maps.</i></u> <i>Map detailing the locations and relative importance of tank assembly plants in Axis Europe, September, 1943.</i>	29
<u><i>Architectural Plans.</i></u> <i>Construction plans for "war apartments."</i>	30
<u><i>Situation Maps.</i></u> <i>Situation map of Normandy on July 28, 1944.</i>	31
<u><i>Aerial Photographs.</i></u> <i>German-flown aerial photograph of Grodno, U.S.S.R., October 16, 1944.</i>	32

PREFACE

This reference information paper is the latest in a series that was begun by the National Archives while World War II was still in progress. The papers are part of a comprehensive descriptive program and are designed to provide researchers with concise information about Federal archival records relating to specific topics of current interest. The format and style of the papers have varied over the years, but they generally consist of an introduction that places the topic in the context of Federal recordkeeping, followed by sections that describe and discuss specific pertinent records.

Topics addressed in other recent reference information papers include: "Audiovisual Records in the National Archives Relating to World War II" (RIP 70); "Records Relating to Personal Participation in World War II: 'The American Soldier' Surveys" (RIP 78); "Records and Policies of the Post Office Department Relating to Place-Names (RIP 72); and "Records Relating to the Early Involvement of the U.S. Government in Data Processing, 1880's to 1950's" (RIP 76). The descriptive program of the National Archives addresses topics of broader interest with a series of subject guides to its holdings. The most recent of these is *A Guide to Pre-Federal Records in the National Archives* (1989). Others include *Black History: A Guide to Civilian Records in the National Archives* (1984); *Documenting Alaskan History: Guide to Federal Archives Relating to Alaska* (1982); and *Guide to Records in the National Archives Relating to American Indians* (1981). The best overall source of information about Federal archives is the comprehensive *Guide to the National Archives*, revision of which is now in progress.

Our reference information papers and subject guides demonstrate that Federal records provide researchers with valuable information on a range of topics far broader than the history of the Federal Government. We are pleased to be able to make this rich resource available to researchers.

Don W. Wilson
Archivist of the United States

INTRODUCTION

I.1 The maps, drawings, and aerial photographs that are described in this paper are Federal records held by the Cartographic and Architectural Branch of the National Archives and Records Administration. They primarily relate to World War II military activities that took place between 1939 and 1945. Also included are descriptions of drawings of military structures, bases, ships, and ordnance that were in use during the war although designed and constructed many years earlier; maps of the military and political situations in the Far East and Europe during the mid-1930's; and immediate postwar maps of the military occupations of Germany and Japan. Items of later date are described only if they have a direct relationship to World War II. Records pertaining to the home front have been included as well as those relating to the theaters of war, and civilian and military agencies are both represented. Cartographic records showing economic, geographic, geologic, and meteorologic subjects have not been ignored, provided that they are war-related. No attempt has been made to include information on similar records in other branches of the National Archives.

I.2 In this paper, the descriptive entries are arranged numerically, according to the record group numbers assigned by the National Archives, and thereunder by type of record. A record group (RG) is the standard unit of archival records maintenance and represents the organizational origins of the records. Generally, a record group relates to a single originating department, bureau, or agency of the Federal Government.

I.3 Each record group description is divided into the four major types of records maintained by the Cartographic and Architectural Branch: maps and charts, aerial photographs, architectural drawings, and engineering plans. The category of maps and charts includes cartograms, city and site plans, photomaps, relief models, perspective or panoramic views, beach profiles, map overlays, and other records that relate to maps and mapping. Included in the aerial photographs category are aerial mosaics and stereoscopic aerial images. The architectural drawings category consists of plans of buildings and structures at airbases, military reservations, navy yards, military hospitals, relocation centers, defense housing projects, and industrial projects, as well as drawings of Federal Government buildings and designs for commemorative medals. The engineering plans category includes plans of ships, military ordnance, equipment, and instruments in use during the war.

I.4 A list of abbreviations used in the text follows this introduction. After the descriptive entries there is a glossary of cartographic, architectural, and aerial terms and World War II code names and jargon terms used throughout the text. An index of place names and other key terms concludes the paper. The place names used are those that were in general usage throughout the period of World War II.

I.5 The records and illustrations included in this publication are maintained by the Cartographic and Architectural Branch of the National Archives and are available for study in its research room. Reproductions may be furnished for a fee. Queries should be addressed to the Cartographic and Architectural Branch, National Archives and Records Administration, Washington, DC 20408.

FEDERAL RECORDS

RG 16 Records of the Office of the Secretary of Agriculture

16.1. Maps & Charts: Included are a number of agricultural atlases produced by regional postwar planning committees (1941-45), and a USDA publication entitled *A Graphic Summary of Farm Crops* (1943) that shows the distribution and volume of agricultural products of the United States at the beginning of World War II.

RG 18 Records of the Army Air Forces

18.1. Maps & Charts: Among the records are incomplete sets of worldwide aerial chart series published by the Aeronautical Chart Service (ACS) and by other agencies such as the Coast and Geodetic Survey (C&GS) and Army Map Service (AMS) for the Army Air Forces during World War II. These include world aeronautical charts (WAC), pilotage charts, approach charts, aeronautical planning charts, planning outline charts, special air navigation charts, long range air navigation (loran) charts, and direction finding tracking charts. Some of these series include fluorescent maps, that could be used under ultraviolet light as well as normal lighting. Other series of charts include the regional aeronautical chart series, which covers the Western Hemisphere; cloth charts, most of which relate to areas in the Far East and Southwest Pacific; and training charts of areas in the United States. An ACS catalog of aeronautical charts (1946) contains index charts for most of these chart series. Other records include a diagram illustrated with photographs showing ACS chart reproduction processes (1945); a war room display map of the Southwest Pacific (1944); an "Aeronautical Chart of the World" showing airways and distances (1943); and a set of "Stargraph" plotting charts for celestial navigation (1943).

18.2. Also included are target charts, target approach charts, and photomaps and perspective charts of target areas in Japan, China, Indochina, Korea, the Philippines, the Mariana Islands, North Africa (Morocco, Algeria, and Tunisia), the Atlantic islands (the Azores, Cape Verde, and Madeira Islands), Finland, Sweden, Turkey, and most of the countries of southern Europe (including France, Italy, Hungary, and those on the Balkan and Iberian peninsulas). These were compiled by the Air Intelligence staff and by A-2 (Intelligence) sections of the 20th Air Force and the 21st Bomber Command. In addition, there are city plans, "Flak" maps, and charts showing defenses at target areas in Korea, China, Formosa, Manchuria, and Japan. An incomplete set of Special Photo Intelligence Reports (P.I. Reports), prepared by the 18th Photographic Intelligence Detachment of the 14th Air Force, includes maps and photomaps of areas in China, Manchuria, Formosa, Japan, and the Philippines. Charts and maps showing airfields in the Far East, Europe, and the U.S.S.R., as well as a map that shows U.S.-funded or utilized airbases on foreign soil in the

Western Hemisphere and a chart of the Scoresby Sound area in Greenland annotated to show possible landing areas (1942), are among the holdings, as are a few manuals and memos relating to the North Atlantic aerial "ferry routes" from the United States to Great Britain, some of which are illustrated with attached maps and copies of aerial photographic prints of airfields and approaches along the routes (1942).

18.3. Among the records of the Weather Division of the AAF are standardized weather plotting charts of the different regions of the world; a map of the world showing climatic regions with basic military climatic data; two editions of a *Preliminary Climatic Atlas of the World* (1942-43) showing mean weather conditions in 11 regions worldwide; four special atlases showing "strategic aspects" of mean weather conditions in the Balkans, southern France, Italy, and the Iberian Peninsula (1942-43); and a report on the weather of China (1945).

18.4. Aerial Photographs: The records include approximately 80 aerial vectographs (stereoscopic views) of Kiska Island in the Aleutian Islands and the polaroid viewers necessary to use them, as well as 13 aerial photographic prints (vertical and oblique) of Attu Island, also in the Aleutians. In addition, there is a published "Photo Industrial Study" of the petroleum industry to aid in photographic interpretation (1944). Also included are more than 500 aerial photographic mosaics (negatives and prints) relating to forts, airfields, ordnance depots, and arsenals in Western and Midwestern States (1923-40), many of which continued in use during World War II.

RG 19 Records of the Bureau of Ships

19.1. Engineering Plans: Approximately 54,000 plans of U.S. Navy ships of all classifications, most of which were constructed before 1940, are among the records of the Bureau of Ships that were prepared by its predecessors, the Bureau of Construction and Repair and the Bureau of Engineering. Of these, about 4,000 plans relate to ships that were in service during World War II, such as the Arizona (BB-39), Indianapolis (CA-35), Seawolf (SS-197), Tennessee (BB-43), and Yorktown (CV-5). Types of plans include inboard and outboard profiles; hull plans; section plans; sheer, halfbreadth, and body plans; and plans of decks, bridges, holds, magazines, and machinery. Other plans of machinery and mechanical and electrical details of U.S. naval vessels are on microfilm. Plans of most U.S. naval ships constructed after 1940 remain in the custody of the Department of the Navy. Also included among the records are approximately 250 detail plans relating to foreign ships (mostly British) constructed before 1934, some of which (such as the H.M.S. Hood) were in World War II action. Among the few plans included that do not relate to specific ships are plans for topside sonic equipment developed at Mare Island, California, 1943-44.

RG 23 Records of the Coast and Geodetic Survey

23.1. Maps & Charts: Among the records are approximately 19,000 published nautical charts, of which perhaps 1,000 were printed during World War II. These cover the coastal areas of the United States and the U.S. territories of Alaska, Puerto Rico, the Virgin Islands, the Panama Canal Zone, the Hawaiian Islands, Midway Island, Guam, and the Philippine Islands. Eight World War II shipwreck charts (A-charts) indicate the locations of shipwrecks along the Atlantic and Gulf coasts of the United States and list sinkings that primarily occurred between 1941 and 1943. There are also approximately 1,600 copies of terrestrial maps (T-charts) that illustrate topographic surveys based on aerial photography of coastal areas of the United States, of which several hundred date from the period.

23.2. Aeronautical charts prepared largely for the Army Air Forces during the war, include aeronautical planning charts of the United States and Alaska, and regional aeronautical charts of the United States. More complete sets of these chart series are filed in the records of the Army Air Forces (RG 18), as are other charts prepared by the C&GS for that agency. Other aerial chart series dating from World War II among the records of the Coast and Geodetic Survey include flight charts and radio direction finding charts, mostly of the United States and Alaska, as well as worldwide magnetic declination charts and special aeronautical chart series covering Alaska and the Philippines. Index maps of most of these chart series appear in a *Catalog of Charts and Related Publications* (1945). In addition, there are seven plastic relief models of such areas as San Francisco Bay, the Hawaiian Islands, and the Mediterranean Sea, that were produced by the C&GS for use in instructing AAF pilots and navigators in reading topographic maps and charts. Samples of aluminum molds and plaster casts used in producing these models, and of copper plates used in the production of nautical charts, are included as well.

23.3. Among the 2,300 maps and charts in the C&GS Library and Archives Map Collection, there are fewer than two dozen items relating to World War II. These include a 1944 map showing naval and Coast Guard districts within the United States, a 1945 chart of Manila Harbor, a 1947 map showing the occupation zones in Germany, and a four-sheet reprint of a 1945 Soviet map of the U.S.S.R. Other records include the annual reports of the Director of the Coast and Geodetic Survey for 1944 and 1945; a *World War II History of the Coast and Geodetic Survey* (1951); gazetteers of the coastal areas of the Philippines, Alaska, and the States of California, Oregon, and Washington (1939-45); and a number of C&GS special publications relating to technical and scientific subjects that were printed during the period.

23.4. Engineering Plans: Among the records are approximately 3,100 engineering drawings of equipment and instruments designed by or for the Coast and Geodetic Survey between 1922 and 1963. Those dating from World War II include plans of a nine-lens aerial camera, stereoscopes, theodolites, signal lamps, and tide gauges.

RG 26 Records of the United States Coast Guard

26.1. Maps & Charts: The cartographic records of the U.S. Coast Guard include published Coast and Geodetic Survey charts annotated to show harbor approaches and facilities, lighthouses, light buoys, and changes in positions of buoys in the Third Lighthouse District (the New York district) in the Eastern United States (1915-41). Several are identified as World War II blackout charts and show light buoys not in operation in 1941. Two oversize volumes contain annotated charts of coastal New England and textual notes relating to beach patrol operations in 1943. These charts show beach patrol barracks and outposts, light stations, lifeboat stations, and Army searchlight stations. Coastal surveys of southern and western Greenland are represented by seven charts of those areas prepared in 1941.

26.2. Architectural Drawings: Among the records are architectural drawings of Coast Guard stations in the United States and Alaska, many of which were in operation during World War II. These include plans of depots, patrol and repair bases, and air stations, as well as numerous plans of lifesaving stations and lighthouses.

26.3. Engineering Plans: The records include approximately 36,800 plans of Coast Guard vessels, some of which served in various capacities during World War II. Although the majority of these plans are of a technical nature and pertain to mechanical details of the ships, there are a number of general plans as well, including inboard and outboard profiles, hull plans, section plans, and plans of decks, bridges, and holds.

RG 31 Records of the Federal Housing Administration

31.1. Maps & Charts: Among the records is an outline map of the United States annotated to show counties in which designated defense areas are located under the provisions of Title VI of the National Housing Act as of June 5, 1942. In addition, maps of a few cities show the locations of major defense activities (1941-42), and a map of Washington, DC, shows public defense housing sites (1943). Other records include a bulletin of the National Housing Agency, Division of Urban Studies, entitled "Preparation of Maps in Connection With War Housing Programs" (1943).

RG 37 Records of the Hydrographic Office

37.1. Maps & Charts: The records of the Hydrographic Office (H.O.) include approximately 90,000 published nautical charts of foreign coastal areas worldwide, of which about 9,000 were printed during World War II. In addition, a number of specialized series of nautical charts were published during the period to illustrate information not shown on the standard nautical charts. These include monthly pilot

charts of the Atlantic, Pacific, and Indian Oceans (through 1944), and the Greenland and Barents Seas (1942-45); sound ranging charts of the world, for the detection of submarine and surface vessels (1942-43); bottom sediment charts of the waters off Japan and China (beginning 1943); sea and swell charts of the western Pacific and North Atlantic Oceans (1943); current charts of the Pacific (1944-45); a world atlas of sea surface temperatures (1944); anchorage charts and fleet operating area charts of harbors and coastal waters adjacent to the United States, the West Indies, the Panama Canal Zone, Japan, Hawaii, and many Pacific islands; and six route charts showing major nautical routes and distances in the Atlantic, Pacific, and Indian Oceans. Fourteen wreck charts of the Atlantic and Gulf coasts of the United States and the northeastern coast of South America published during the period show the locations of shipwrecks and list the sinkings, which primarily occurred between 1941 and 1943. Similar Asian wreck charts were published in 1953 and show the same information regarding ship sinkings off the coasts of Japan, China, Korea, and Siberia during World War II.

37.2. Also among the holdings are about 150 "Field Charts" compiled and published on field survey ships during the period. Many were prepared during World War II invasions of the Southwest Pacific, although a few relate to the West Indies. Several thousand "emergency reproductions" of British Admiralty (B.A.) and other foreign charts published during the war are included among the records, as are photographic negatives of French charts of the coasts of France and North Africa, Japanese charts of Pacific islands held by Japan, and manuscript survey charts prepared by the Hydrographic Office for the production of published charts. Index chart catalogs for the standard published H.O. and B.A. charts (1942 and 1944) are among the records, as is a publication entitled *Sailing Directions for the Pacific Islands, Vol. I, Western Groups* (1945), that includes index charts for the H.O. and B.A. charts of that area.

37.3. Enclosures to correspondence include many charts and maps of Pacific islands, that were produced by the Commander in Chief, South Pacific (CICSOPAC), the U.S. Army Forces in the Central Pacific Area (USAFICPA), the Joint Intelligence Center, Pacific Ocean Area (JICPOA), and other military commands. Among these are target charts of airfields in the Solomon Islands, an atlas of maps and notes on the Marshall Islands (1943), maps of beaches and harbors in Guam, a photographic intelligence folio on Rota Island (Mariana Islands), beach studies of Kiska Island (Aleutian Islands), and air objective folders of the Philippine Islands, China, and the Tokyo area of Japan (1943). Miscellaneous published charts and maps among the records include two editions of a four-sheet "Strategic Map of the World" (1940 and 1942); maps showing sea frontiers, defense commands, naval districts, and joint operation centers (beginning 1944); numerous sketch maps and charts of New Guinea, New Britain, New Georgia, and other islands of the Southwest Pacific; and several maps showing air facilities in the western Pacific and eastern Indian Oceans. A 1939 outline chart of the world is overprinted to show existing and proposed U.S. naval air, submarine, destroyer, and mine bases, including those recommended by the Hepburn Board, and a 1946 map relating to

Operation Crossroads shows the locations of the first four atomic bomb explosions in the United States, Japan, and the Bikini Atoll.

37.4. In addition, there are approximately 4,000 published aeronautical charts designed for the use of naval aviators, many of which date from World War II. These include air navigation charts, aircraft plotting charts, air distance charts, and loran charts. An index chart catalog for loran charts (1946) is among the records as well. Upper air pilot charts of the North Atlantic and North Pacific Oceans cover the entire period of World War II. Fifteen "view charts" of the Aleutian Islands and St. Lawrence Island, Alaska, include perspective views of approaches to aid aviators (1942-43). Another series of about 900 aeronautical charts relates primarily to the Far East and the islands of the Pacific, although some charts cover areas in North and South America, including the West Indies, Newfoundland, and the Aleutian Islands. While most of these charts were intended to help aviators find airfields, there are also target charts of areas in Japan and Formosa and nine cloth charts of Pacific island areas that were intended as survival maps for aviators shot down in the Pacific.

37.5. Other records include 16 gazetteers covering Japan, coastal China, Indochina, and the islands of the South China Sea and Pacific Ocean (1943-45); publications on Chinese chart terms and on Eskimo place names in Greenland and Canada (1943); a glossary of cartographic terms used in Pan-American surveys (1943); a bibliography and an atlas on ice in the Northern Hemisphere (1945-46); publications on standard scales, proposed international aeronautical chart symbols, Asiatic climatology, and the forecasting of breakers and surf (1941-45); and a report on grained vinylite and the Medina-Looney process of chart reproduction (1945). A number of training manuals and handbooks covering such subjects as hydrographic and geodetic surveying, drafting nautical charts, aircraft navigation, and magnetic compass adjustment and compensation (1941-44) are among the records, as is a "Star Finder and Identifier" device (1942) for use in aircraft navigation. A "Trans-United States Seaplane Route Manual" includes approach and landing charts and oblique aerial photographs of seaplane landing areas throughout the United States (1944). A list of principal officials and officers of the Navy Department and of the United States Fleet from September 1939 to June 1945 is also among the holdings, as are copies of the weekly "Hydrographic Bulletin" to December 30, 1942. Illustrations published in 1942 for the instruction of naval personnel show the silhouettes of U.S. Navy planes, the salient visible characteristics of fighting ships, and an inboard profile of a typical battleship.

37.6. **Aerial Photographs:** Approximately 2,500 aerial images, including both vertical and oblique views dating from 1923 to 1950, are on negative film rolls. Areas of coverage include portions of coastal Florida and California, Cuba, the Aleutian Islands, and a number of Pacific islands (including Guam and Wake Island). Although most of the photographs date from the 1930's, some (including those of the Aleutians and Guam) were taken during flights in World War II. Most of this photography is unindexed. Other aerial records can be found among the enclosures

to correspondence series. These include oblique aerial photographs of Saipan (Mariana Islands) and aerial mosaics of several Pacific islands and of Tunisia. In addition, there are a number of oblique and vertical aerial photographs among the series of about 900 aeronautical charts, primarily of airfields in the Southwest Pacific, the Aleutian Islands, the West Indies, and the Panama Canal Zone. Other negative film rolls of H.O. aerial photography of the period may be found among the records of the Defense Intelligence Agency (RG 373).

RG 38 Records of the Office of the Chief of Naval Operations

38.1. Maps & Charts: Among the holdings are about 1,700 8- by 10-inch black and white photographic prints and negatives of daily ship plotting charts, showing the known locations of unnamed naval vessels worldwide from May 1941 to January 1943. Some of these specifically relate to enemy submarine positions in the Atlantic and Pacific Oceans from November 1941 to February 1942. In addition, there are about a dozen maps collected or compiled by the Office of Naval Intelligence during the World War II period. These include maps of portions of Japan, Indochina, and Nicaragua showing intelligence information, and one map showing landing beaches in Algiers. Also among the records are site plans of 18 navy yards in the United States, Hawaii, and Cuba (1917-18), most of which remained in operation throughout World War II.

RG 43 Records of International Conferences, Commissions, and Expositions

43.1. Maps & Charts: Included are 195 reference maps and related papers used by the U.S. delegations at peace conferences at the end of World War II, notably the first four sessions of the Council of Foreign Ministers, the Paris Peace Conference, and the London Conference of Deputies of Foreign Ministers (1945-47). Among these are published maps annotated to show different boundary proposals for European countries. The boundary disputes covered include those between Italy and its neighbors Yugoslavia, France, and Austria; Greece and neighboring Bulgaria and Yugoslavia; Czechoslovakia and Hungary; and the U.S.S.R. and Romania. In addition, there are maps relating to Italian colonies; map annexes to draft treaties with Bulgaria, Finland, and Hungary; and a set of maps relating to the treaty of peace with Italy. Map supplements to a "Statement of the Allied Governments on the German Problem," presented to the London Conference, include maps of Belgium, Czechoslovakia, Luxembourg, and the Netherlands.

RG 45 Naval Records Collection of the Office of Naval Records and Library

45.1. Maps & Charts: Among the records are several dozen site plans of naval stations, training camps, and hospitals in the United States and abroad, constructed prior to 1921, some of which remained active during World War II.

RG 51 Records of the Office of Management and Budget

51.1. Maps & Charts: Included is a bound set of 150 maps, compiled by the Bureau of the Budget in September 1941, that shows the administrative regions and locations of regional headquarters of most of the civil and military agencies of the executive branch of the Federal Government on the eve of the entry of the United States into World War II. Also in the holdings are bulletins showing the status of geographic projects that U.S. agencies were working on in foreign regions (1942-1945) and the minutes of meetings of the Federal Board of Surveys and Maps up to February 1942.

RG 57 Records of the Geological Survey

57.1. Maps & Charts: Among the records are more than 105,000 topographic quadrangle maps of the United States published by USGS from about 1880 to the present. These maps form series of different scales, primarily 1:24,000, 1:31,680, 1:62,500, and 1:125,000. Although only one-half of the country was covered by topographic quadrangle maps by 1945, these map series, together with the "Progressive Military Maps" published by AMS (RG 77), form the most complete set of topographic maps of the United States during the World War II period. Index maps for the topographic quadrangle maps are also among the holdings. In addition, the records include a series of topographic quadrangle maps of Puerto Rico published by USGS from 1939 to 1953 at a scale of 1:30,000 and topographic maps of individual islands of the Hawaiian Islands group published from 1912 to 1965, including a 1942 reprint of a map of Oahu. A series of maps of Alaska at the scale of 1:250,000 includes several compiled or printed during World War II, as does a set of quadrangles of portions of the United States prepared for an "International Map of the World" on a scale of 1:1,000,000. Other records include a map showing the status of topographic mapping in the United States that has been annotated to show the "Defense Zone" as described by the Department of War on September 2, 1942. There is also a 1947 map of Alaska showing areas covered by aerial photographs taken by the Army Air Forces, the Navy, Department of Agriculture, and Coast and Geodetic Survey since 1939.

57.2. A major responsibility of USGS during the war was to locate and report on deposits of strategic minerals in the United States. Records relating to this function include a map of coal fields of the United States (1942), two maps of oil and gas fields in the country (1940 and 1946), a number of preliminary maps for strategic

minerals investigations (1940-46), and maps and other records relating to the Arkansas Bauxite District (1942-45). Two Brazilian maps showing the locations of minerals and mineral industries in Brazil (1944) are also among the holdings.

RG 59 General Records of the Department of State

59.1. Maps & Charts: Among the records are about 1,000 maps, cartograms, and graphs prepared in the Division of Geography and Cartography of the Department during World War II (1942-45) chiefly for the use of a committee headed by Dr. Leo Pasvolsky, in preparation for a peace conference at the cessation of hostilities. Some of these published records have been geographically arranged by State Department geographer Dr. Isaiah Bowman. Although all areas of the world are covered, the emphasis is on the Far East and Europe. Subjects include international boundaries, territorial problems, zones of occupation, administrative divisions, transportation routes, locations of military bases, and distributions of population, religious and ethnic groups, mineral resources, industries, crops, vegetation, rainfall, and climate. In addition, 326 maps were collected for the use of the Pauley Reparations Mission from numerous sources, including the OSS, AMS, National Geographic Society, and some foreign governments (1939-46). Most of these maps relate to Japan, China, Korea, the U.S.S.R., Germany, and Austria. An atlas and gazetteer among the holdings relate to administrative subdivisions of Japan (1946-47). Enclosures removed from U.S. consular trade reports include numerous maps of transportation and communications facilities, electric power production and distribution systems, mineral resources, and city planning throughout the world during the World War II period. Also among the records are about 300 maps of foreign cities that were enclosures to the Foreign Service inspection reports. These show locations of consulates, embassies, customhouses, and business and industrial districts from 1906 to 1939, many of which continued to function throughout World War II. Photographic copies of two maps show the general locations of Foreign Service posts in Europe and throughout the world as of July 5, 1941.

59.2. Other records include "Ship Sinking Data," compiled by the U.S. Maritime Commission, on merchant ships of all nationalities either sunk, missing, or damaged by actions of war from September 1939 to April 1941; and daily reports on American vessels in the "Combat Area" around Great Britain, including attached maps showing their locations from November 25 to December 27, 1939. There are worksheets compiled during a Work Projects Administration (WPA) research project for a "Central Pacific Islands Study" that involved surveying 19th-century materials relating to the names of islands and reefs (1939-43); about 20 reports prepared by the Department on territorial, repatriation, economic, legal, and administrative problems anticipated in Japanese island territories and Macao, as well as a study of inland waterways of the U.S.S.R. and a comparative study on energy production, reserves, and consumption among nations (1943-45); and 10 "Intelligence Research Reports" on map coverage, boundary problems, and reconstruction in Germany, Spain, Hungary, Czechoslovakia, Greece, Turkey, and the Arabian Peninsula, as

well as on German cartographic and map collecting agencies (1946-47). Also included are records of Samuel W. Boggs, Special Adviser on Geography to the Department of State during the war, including his shorthand diaries for 1942, 1943, and 1944; a globe and geometrical plastic hemisphere designed by Boggs to measure global distances (1944); and general correspondence of the Geographer during the period, including minutes of the Federal Board of Surveys and Maps (March 1941-February 1942).

RG 66 Records of the Commission of Fine Arts

66.1. Architectural Drawings: Plans of buildings and structures in the Washington, DC, metropolitan area that were utilized for the war effort are among the holdings. These include plans of Navy Department and War Department buildings in the District of Columbia and in Arlington, Virginia (including the Pentagon); temporary Federal office buildings (1941); a "Hotel for Colored Women" proposed by the Defense Homes Corporation (1942); and bridges described as "Emergency River Crossings" between DC and Virginia (1942). There are also a few drawings of proposed commemorative medal designs related to the war. Among these are designs honoring soldiers in the European and Pacific theaters of operations and in the U.S. army of occupation in Germany.

66.2. Maps & Charts: A number of maps relate to areas in the Washington, DC, metropolitan area during the World War II period. Among these are maps showing the locations of military reservations and existing or proposed federal buildings, as well as street and traffic plans.

RG 71 Records of the Bureau of Yards and Docks

71.1. Architectural Drawings: Approximately 100,000 plans of buildings and structures constructed at navy yards, naval bases, airbases, training camps, fuel stations, ordnance plants, radio stations, and hospitals in the United States and abroad from the 1870's to the 1950's are among the records of the central office of the Bureau of Yards and Docks. Of these, about 30,000 were made during or immediately following the World War II period. In addition to drawings of buildings at almost every naval facility in the United States (including Washington, DC, naval facilities, the Lakehurst (New Jersey) Naval Air Station, and the navy yards at Norfolk, Pensacola, Portsmouth, and San Diego), there are plans relating to bases in Newfoundland, the West Indies, Colombia, the Panama Canal Zone, the Aleutian Islands, Hawaii, the Philippines, Guam, and other Pacific islands. These records include drawings of dry docks, wharves, magazines, airplane and airship hangars, dispensaries, prisons, barracks, officers' quarters, oil storage tanks, workshops, and nearly every other type of naval building or structure, as well as water, heating, electrical, and radio systems. Standard plans are included, although most drawings relate to specific sites. Other architectural drawings relating

to naval sites are on microfilm. Some plans dating from the World War II period remain in the custody of the Department of the Navy.

71.2. Maps & Charts: Filed among the architectural plans are numerous maps of navy yards, naval bases, airbases, training camps, fuel stations, ordnance plants, radio stations, and hospitals in the United States and abroad (including sites in the West Indies, the Aleutian Islands, Hawaii, the Philippine Islands, and Guam), many of which were prepared during World War II. Other maps of naval bases, including site plans of naval air stations in the United States dating from 1940 to 1942, are on microfilm.

71.3. Engineering Plans: Included are about 100 plans relating to U.S. Navy ships and boats, a few of which, such as the U.S.S. Idaho (BB-42), saw action during World War II.

RG 72 Records of the Bureau of Aeronautics

72.1. Engineering Plans: There are about 1,500,000 plans of U.S. naval airplanes, including many of the period (such as the Grumman F4F Wildcat, the Douglas SBD Dauntless, and the Vought F4U Corsair), among the holdings. These plans are arranged in several series, notably the Bureau of Aeronautics master plan files (1911-42); the Navy Aircraft Factory (NAF) plans files (1917-42); and the Naval Air Engineering Center (NAEC) plans files (1942-62), which include those of its predecessor, the Naval Air Material Center (NAMC). In addition, there are approximately 4,000 plans relating to U.S. airships and related equipment and instruments (1919-44) from the Lakehurst Naval Air Station. Only a small number of these pertain to dirigibles that remained in service during World War II. About 3,000 rolls of negative microfilm include copies of naval airplane and airship engineering drawings and plans of aircraft engines and related equipment accumulated by the Naval Air Technical Services Facility, as well as German research and development documents relating to work on guided missiles conducted during the war at the Peenemunde Proving Ground. Many of the documents include plans and photographs, and most are in German, although a few English translations are included.

72.2. Maps & Charts: The records include a map of Bermuda showing the locations of U.S. and British military bases (1944). In addition, there are a few maps of Lakehurst and other U.S. naval air stations, most of which date from the 1920's, filed among the airship plans.

72.3. Architectural Drawings: Plans of buildings and structures, such as mooring masts at Lakehurst Naval Air Station that date largely from the 1920's, are filed among the airship engineering plans.

RG 74 Records of the Bureau of Ordnance

74.1. Engineering Plans: Approximately 425 engineering drawings of naval ordnance designed during World War II are among the records. These include plans for 40mm and 60mm guns, magazines, and gun mounts, as well as aviation bomb racks. Also among the records are thousands of drawings relating to guns and armorplate designed before 1925, some of which may have continued in use during World War II.

RG 77 Records of the Office of the Chief of Engineers

77.1. Maps & Charts: The records of the Office of the Chief of Engineers include the maps produced and collected by the Army Map Service (AMS) and its predecessors, the Engineer Reproduction Plant (ERP) and the office of the War Department Map Collection (WDMC). Among these are numerous AMS map series published during the World War II period, many of which are based on previous map publications of the British Directorate of Military Survey and its predecessor, the Geographical Section, General Staff (GSGS). These series contain more than 136,000 maps produced from 1942 to 1966 and cover virtually all countries and land areas in the world at various scales. Most of these series consist of topographic maps, although some feature transportation maps, special strategic maps, photomaps, and city plans. These AMS published series form the most complete set of World War II era topographic maps of foreign areas available in the National Archives. Included among the records are index maps of the AMS and GSGS series and an AMS *General Map Catalog* (1945) that lists the several hundred map series published during World War II. Some AMS aerial charts were printed on paper made of rice. About 30 of these "edible maps" (all of areas in Europe) are among the holdings. Other maps produced by AMS for the Army Air Forces are among the records of that agency (RG 18).

77.2. As the threat of war approached, WDMC collected and ERP reproduced copies of map and chart series previously published by other government agencies (U.S. and foreign) of key regions of the world. Among the records are about 110 blueprint copies of topographic maps of Luzon in the Philippines, which were originally printed by the Philippine Department of the Corps of Engineers from about 1915 to 1937. These formed the basis for AMS series of maps of Luzon produced during the war. Similarly, approximately 2,600 maps prepared by the Military Intelligence Division (MID) about 1930 from earlier Japanese Imperial Land Survey sheets were maintained among the records of WDMC and used as preliminary editions of an AMS map series of Japan in 1942. A set of 41 Japanese naval air charts of Japan and the coasts of Korea, Manchuria, and China, reprinted by ERP in 1941 from the Japanese originals dating from 1934 to 1938, are also among the holdings. Smaller incomplete map series include the Royal Air Force (RAF) aeronautical war edition of maps of the Ordnance Survey of Great Britain and a topographic survey of Australia by the Australian Section, Imperial General Staff.

77.3. Other records produced or collected by AMS and its predecessors include approximately 2,100 target charts of military targets throughout Europe, Japan, and Tunisia (1942-45). In addition, there are two maps showing military objective areas in the Philippines, the Netherlands East Indies, southeastern Asia, and Japan (1942); four sheets of maps illustrating the German invasion of Poland ("Der Feldzug in Polen") in September 1939; six maps of portions of northwest Europe showing defended areas and areas of searchlight concentrations (1941-42); a map showing positions of Chinese Communist and Japanese troops in northeast China (1944); copies of eight maps produced by the Chinese Communists to illustrate military situations in the coastal areas of China (1944); a copy of a 1941 Japanese map of Guam; and a small number of maps showing defenses and troop positions in such areas as Libya, Yugoslavia, the Canary Islands, Rhodes (Dodecanese Islands), and Pantelleria and Lampedusa (Italy).

77.4. Also among the holdings are 42 "Strategic Engineering Studies" (SES) prepared by the USGS and the Beach Erosion Board and published by the MID and the Corps of Engineers (1943-45). These reports include numerous maps, aerial photographic mosaics, ground-level photographs, and graphs, and describe in detail certain geographic aspects of European, Far Eastern, and Pacific countries and island groups of strategic importance. Included are terrain intelligence studies of Sicily, Italy, France, the Balkan countries, China, Formosa, Japan, the Philippine Islands, Borneo, the Bonin and Volcano Islands, and the Caroline Islands; landing beach studies of Sicily, Italy, southern France, the Balkan countries, Netherlands New Guinea, and the Philippines; studies of airfield sites, railroads, and mineral resources in China; a study of electric power in Manchuria; and a study of aqueducts in Sicily. Individual copies of the 32 landing beach maps for the Sicily SES (1943) are also in the records, as are 27 coastal strip maps and landing beach maps of Spanish Morocco and French Morocco (1942), all prepared by the Beach Erosion Board.

77.5. A number of maps and charts relate to transportation routes and facilities throughout the world. Among these are a map showing land routes from India to China (1942); a map showing the locations of defense industries and supply routes within the U.S.S.R. (1941); a map of roads and railroads in Turkey (1941); a road map of northwest Africa (1942); an aerial photo mosaic of the Burma Road (1943); several maps showing airfields in Siberia and Alaska and northern approaches to Japan (1943); maps of the Alcan Highway route and other road construction projects in western Canada and Alaska (1942-43); a map showing the routes of the Air Transport Command worldwide as of September 1945; four maps of landing field areas in Greenland (1941); aerial navigation charts of the North Atlantic (1943); and maps showing the locations of airfields in North Africa, the Middle East, the U.S.S.R., the Far East, Indochina, occupied and unoccupied China (1943), Japan, and the Southwest Pacific. Twenty-three reports on the locations and conditions of airfields in Algeria and French Morocco include maps and aerial photographs of the fields (1943).

77.6. Other records include several water resources maps of portions of North Africa, Sicily, Italy, and the Middle East (1942-43); maps prepared to accompany a "Survey of Iran" that show air routes, landing fields, city plans, oil fields and pipelines (1941-42); two maps that show locations of mineral resources in Bulgaria and Yugoslavia (1943); maps that show the locations of coal reserves and coal and oil facilities in China, Formosa, and Korea (1943); a chart that shows the estimated flow of crude oil and oil products in the Southwest Pacific (1943-44); two maps that relate to Japanese food resources in the Far East and Southwest Pacific (1943); a map with extensive notes relating to ship and boat construction and repair in Japanese-occupied China, Formosa, and Indochina (circa 1944); six plaster relief models produced by AMS and OSS of areas in Tunisia, China, Japan, and the U.S.S.R. (1943-46); and a 1944 GSGS publication of maps and aerial photographs of towns in Normandy.

77.7. Large series of topographic quadrangle maps of the United States were produced by AMS and its predecessors from 1897 to about 1944. These series were intended to complement the quadrangle series being published by the U.S. Geological Survey (USGS) and to provide training in mapmaking and map reproduction for Army personnel. Under the general title "Progressive Military Maps," these map series cover portions of the United States of particular interest to the military primarily at scales of 1:31,680, 1:62,500, and 1:125,000. Together with the USGS quadrangles (RG 57), they form the most complete set of topographic maps of the United States during the World War II period.

77.8. In addition, there are many site plans, military reservation maps, land ownership maps, and photomaps relating to military bases in the United States, U.S. territories, and Newfoundland. Some of these date from the period, while others were constructed during the early 20th century but continued in use during World War II. A number of maps relate to the sites of oil refineries, pump houses, tank farms, and camps constructed in western Canada and Alaska as part of the Canol project (1942-44). Other Canol maps show the course of the pipelines and the locations of airfields and oil facilities along the project routes.

77.9. Also among the records are AMS annual reports for the years 1942 to 1946; about 40 gazetteers and place-name indexes relating to AMS maps of most of the countries and islands of the Southwest Pacific, the Far East, and Europe, including Japan, the Philippine Islands, France, and Germany (1943-47); three bibliographies of gazetteers and place-name materials relating to AMS mapping theaters (1943-44); 13 manuals identifying symbols used on AMS, SWPA, and foreign maps of Japan, China, the U.S.S.R., and several European countries (1944-48); nine glossaries of geographic terms found on foreign maps, such as those of Japan, the U.S.S.R., Germany, Poland, and Spain (1943-46); and a glossary of photolithographic terms (1946). Other published AMS manuals and memorandums in the holdings include two that describe GSGS maps of western and central Europe (1943-44); one that explains map identification (1943); one that explains the use of foreign maps (1942); and one that relates to the use of Asiatic Pacific maps, complete with "Sad Sack"

illustrations, courtesy of sergeant George Baker (1945). Manuals relating to the use of Chinese characters on military maps, map reproduction in the field, multiplex mapping equipment, and the transferring of geographic coordinates to a military grid (1942-46) are included as well. The published AMS bulletins in the holdings cover such subjects as fluorescent map reproduction, color photography of maps, the construction of topographic relief models, and AMS geographical names policy (1943-45).

77.10. Also included are policy and procedures files, administrative and technical files, program files, and research and development files of memos, notes, and reports maintained by AMS and its predecessors throughout the period. Files of research reports for WAC charts and project histories for AMS maps of Japan and Korea begin during the closing months of the war, as do the files of minutes and notes of the Corps of Engineers "War Planning" weekly staff conferences and the Board on Geographic Names meetings. Files of correspondence, notes, and reports on special subjects, such as the development and production of cloth charts and fluorescent maps and related equipment, are also among the records. Artillery use of maps and aerial photographs is the subject of one file of memos and reports (1943-49), which includes questionnaires filled out by military units of the 1st, 3rd, 9th, and 15th U.S. Armies after V-E Day. Among the Canol project records are progress reports, reports on winter road operations and a 1943 inspection trip, and correspondence files relating to estimates, plans, and specifications for the project (1942-43).

77.11. Files relating to the acquisition of enemy maps, geodetic data, and cartographic equipment by a small unit assigned to that task under the command of Major Floyd W. Hough include photographic negatives and prints of a map archives visited at Saalfeld, Germany, as well as a SHAEF "Handbook Governing Policy and Procedures for the Military Occupation of Germany" (1944-45). More than 500 photographic prints and negatives illustrate foreign mapping equipment (mostly captured German equipment) and geodetic data examined at the end of the war. Included is a file of 20 evaluation reports on enemy equipment examined at Fort Belvoir, Virginia (1945-46). Postwar mapping programs are represented by a correspondence file (1944-48) and by a file of minutes and correspondence relating to the Multipartite Survey Committee organized in Germany in July 1945.

77.12. Architectural Drawings: Among the records are a number of plans of buildings and other structures at forts, airbases, ports of embarkation, ordnance works, and ammunition storage depots in the United States and U.S. territories, including Alaska and the Philippine Islands. A number of these plans date from the period of World War II, while others relate to military bases that had been constructed years before but were still active during the war. Included are plans of pump houses and other structures and facilities constructed along the route of the Canol project in western Canada and Alaska (1942-44).

RG 80 General Records of the Department of the Navy

80.1. Maps & Charts: A single map relates to World War II. This is an unfinished oversize manuscript color map from the Pearl Harbor Liaison Office that was prepared by JICPOA to show Pearl Harbor after the Japanese attack of December 7, 1941. It illustrates the locations of roads, railroads, airfields, buildings, storage tanks, and other facilities on land and positions of unnamed ships in the harbor.

RG 84 Records of the Foreign Service Posts of the Department of State

84.1. Maps & Charts: Among the records of the U.S. Embassy to Lebanon are about a half-dozen maps collected by the Petroleum Attache that show geographic and oil reserves information from 1940 to 1944 in the Middle East, particularly on the Arabian Peninsula. Records of the U.S. Embassy to China include a map showing motor roads in China (1944), one showing routes of communications around Chungking (1943), and a map of Chungking City showing areas bombed in 1939.

RG 92 Records of the Office of the Quartermaster General

92.1. Maps & Charts: Among the records are about 1,800 grave plot diagrams in binders that were prepared by the American Graves Registration Service to show the temporary World War II burial sites of individual U.S. military personnel in cemeteries outside the United States. Included are cemeteries in Hawaii, the Philippines, New Guinea, the Marshall Islands, the Mariana Islands, the Solomon Islands, Iwo Jima, Okinawa, Japan, Australia, China, Formosa, India, French Morocco, Algeria, Tunisia, Italy, Sardinia, Yugoslavia, France, Belgium, Luxembourg, the Netherlands, England, Northern Ireland, Iceland, Greenland, Newfoundland, Alaska, Bermuda, Cuba, Puerto Rico, Trinidad, Brazil, and the Panama Canal Zone.

92.2. Also included are maps prepared by the Military Planning Division of the Office of the Quartermaster General during World War II. Among these are about 80 climate zone maps that show monthly anticipated climatic conditions throughout the world (1943-45), and wind chill maps for Canada and North America (1942). Clothing requirements to meet climatic conditions are represented by statistical charts showing combat clothing to be issued monthly in certain areas and by a map that shows "Japan Clothing Zones" (1945).

92.3. Site plans and reservation maps for U.S. Army bases in the United States and abroad are among the records as well. Although these date prior to 1927, some relate to posts that continued in use during World War II.

92.4. Architectural Drawings: Plans relating to U.S. Army posts and Quartermaster facilities in the United States and abroad are filed in several series within the records of the Office of the Quartermaster General. Although all of these plans date from before 1927, some of the bases remained active during World War II.

RG 95 Records of the Forest Service

95.1. Maps & Charts: Only a few of the more than 15,000 cartographic records of the Forest Service in the holdings are directly related to World War II. These include three maps prepared as part of the Emergency Rubber Project that relate to potential Guayule plantation sites in California (1942-43); two maps that show rubber-producing regions of the world; two maps and a letter that indicate the Forest Service's plans to help implement a national defense aircraft warning system in southern California (1940); and nine maps of national forests and forest regions annotated to show approved and unjustified national defense fire-protection areas (1941-42).

RG 111 Records of the Office of the Chief Signal Officer

111.1. Maps & Charts: Among the records are a map showing communications line routes on the Cotentin Peninsula in France; Signal Corps administrative boundaries in western Europe (April 1945); a teletype traffic diagram relating to the European theater (May 1945); and a map of the United States showing lines of full-period telephone circuits leased by the Army (January 1942).

RG 112 Records of the Office of the Surgeon General (Army)

112.1. Architectural Drawings: There are more than 4,000 plans relating to U.S. military hospitals and medical facilities in the United States, its territories (including Hawaii, Puerto Rico, and the Panama Canal Zone), and several foreign countries among the records. Some of these date from the 1940's, while others document structures constructed in the early 20th century that continued in use during World War II. Included are plans for hospital facilities at the San Francisco Port of Embarkation (1943); the Richmond (Virginia) Veterans Administration Hospital (1943); the Naval Air Station at Cedar Point, Maryland (1942); and Tripler General Hospital at Oahu, Hawaii (1944-47). Also included are plans of hospital ships, such as the Leuschner (1945), standard plans for hospital buildings, and photographs documenting facilities or construction activities at several sites.

112.2. Maps & Charts: About 1,000 site plans, reservation maps, and property maps of U.S. military medical facilities are filed among the architectural records. Most of these date from about 1917 to 1952 and include the sites of hospitals and medical buildings in the United States, its territories, and a few foreign countries.

RG 127 Records of the United States Marine Corps

127.1. Maps & Charts: Included are about 100 maps (mostly "Hasty Terrain" maps), charts, and photomaps prepared or collected by the U.S. Marine Corps from 1942 to 1944 of islands in the western Pacific Ocean, including Bougainville, Guadalcanal, New Georgia, Rendova, Kolombangara, the Florida Islands, and the Treasury Islands (all of the Solomon Islands group); New Ireland and Emirau (of the Bismarck Archipelago); and Saipan (of the Mariana Islands). A small number of maps illustrating the political and military situation in China during the 1930's are included as well. In addition, there is a map of the western Pacific showing air facilities (June 1941) and electrostatic copies of three maps from the Marine Historical Museum relating to Iceland, including a city plan of Reykjavik and a sketch map of Iceland showing potential airplane landing areas (circa 1941). Also among the records are about 50 site plans and reservation maps of Marine Corps installations and training areas in the United States from about 1908 to 1939, many of which continued in use during World War II. Most maps relating to the activities of the Marine Corps during the war remain in their custody.

RG 131 Records of the Office of Alien Property

131.1. Maps & Charts: The records contain 25 charts of U.S. harbors on the Atlantic and Gulf coasts that have been annotated to show the locations of docks and other port facilities believed to be in use by the N.V. Potash Export Company of Amsterdam, a sales agent for the Franco-German potash cartel. The charts appear to have been collected and annotated from about 1929 to 1938.

RG 156 Records of the Office of the Chief of Ordnance

156.1. Engineering Plans: The records include 12 plans of light tanks, half-track personnel carriers, and scout cars designed between 1933 and 1940. Also among the records are approximately 9,000 plans of weapons (such as 6-inch guns and disappearing gun carriages) that were designed between about 1890 and 1925 and may have continued in use during World War II. Approximately 2,000 plans of submarine mines, ground mines, submarine nets, mine planter ships, work boats, boat telephones, and mine-planting equipment, designed by the Coast Artillery Corps and the Chief of Ordnance at the Submarine Mine Depot, Fort Monroe, Virginia, and at the Torpedo Depot, Fort Totten, New York (circa 1892-1947) are included as well. A copy of the publication *Weapons of World War II*, by G. M. Barnes (New York: 1947) is filed with the records.

156.2. Architectural Drawings: Among the records are more than 100 plans of Benicia Arsenal, California (1850-1943), as well as some plans of Watervliet Arsenal, New York, Watertown Arsenal, Massachusetts, and a few torpedo and mine storehouses at Fort Totten and Fort H.G. Wright, New York.

RG 160 Records of Headquarters Army Service Forces

160.1. Maps & Charts: The records include an incomplete set of the weekly Army publication "Newsmap," which consisted of maps with related pictures and descriptive text illustrating military and civilian activities during the war (April 1942-June 1946). A few issues of the publications "Newsmap - Overseas Edition" (July 1943-January 1944) and "Newsmap - CBI Edition" (June 1944) are also among the holdings, as are editions of the related British publication "ABCA Map Review" (January 1944-April 1946) and three issues of the privately published "World News of the Week" (March-April 1942). A similar publication, "Southwest Pacific Newsmap," is among the records of the Allied Operational and Occupation Headquarters, World War II (RG 331).

160.2. Also included among the records of the Headquarters Army Service Forces are four general information maps prepared for Army orientation courses and an *Atlas of World Maps*, which was prepared for the Army Specialized Training Program and includes 30 plates relating to physical, economic, and political geography of the world (1944).

RG 165 Records of the War Department General and Special Staffs

165.1. Maps & Charts: Cartographic records relating to World War II can largely be found among the records of the Intelligence Division (G-2) and the Organization and Training Division (G-3) of the War Department General and Special Staffs. The records include approximately 5,500 Order of Battle maps that show the progress of military operations in the several theaters in Europe, the Pacific, and the Far East from May 1943 to August 1945; 1,000 black and white photographic negatives of Order of Battle maps from September 1943 to February 1945; and 1,000 "Blue Operational Maps," which form the base maps upon which Order of Battle information is overprinted. Also among the holdings are approximately 800 situation maps of air operations in the Mediterranean and European theaters (May 1943-April 1945) and ground operations in the Philippines (December 1941-February 1942), North Africa (March-May 1943), and Pantelleria, Sicily, Italy, and southern France (June 1943-May 1945); a set of 15 map sheets covering eastern and central Europe, annotated to show the movement of the front lines on the Eastern Front from June 1944 to March 1945; and five operations maps used to illustrate reports on military operations in New Guinea from August 1943 to April 1944. Other situation maps of European theater ground and air operations are filed among the records of the Allied Operational and Occupation Headquarters, World War II (RG 331).

165.2. Other records include MIS strategic maps that show terrain regions, climatic zones, and locations of industries, minerals, crops, transportation routes, landing beaches, and military defenses and bases for five regions in Europe and one in southeastern Asia (1943), as well as the textual MIS/MID estimates to accompany

strategic maps of four of the European regions. Illustrations for a "Survey of Korea" (1943) include maps showing highways, vegetation, climatic regions, and the distribution of population and crops. Also among the records are a set of maps that show the administrative boundaries of the Army in the United States yearly from 1942 to 1947; a chart that shows "Theaters of Operation and Battle Honors Areas" worldwide (1944); a map that shows the military situation in China as of October 14, 1938; and another map that shows the situation on the border between Korea and Siberia as of August 5, 1938.

RG 169 Records of the Foreign Economic Administration

169.1. Maps & Charts: Included are records produced and collected by the Foreign Economic Administration (FEA) and its predecessors, the Office of Economic Warfare and the Board of Economic Warfare. A numbered series of about 1,900 thematic maps, charts, graphs, and cartograms relates primarily to economic subjects of strategic importance in regions and countries throughout the world (1942-45). Among the subjects covered are the distribution of resources and industries, transportation routes, power systems, population concentrations, and political and administrative boundaries. These include maps relating to the Japanese oil industry and bombing ranges in the Far East and the Southwest Pacific (1943); oil fields and refineries of the Netherlands East Indies (1944); the Burma Road (1943); transportation routes in China and Indochina; Germany's autobahn system (1943); the political divisions of Greece (1943); Soviet ports on the Black Sea (1943); the flow of strategic materials to the United States by means of the operations of the International Air Transport Division (1943); and the locations of FEA overseas missions as of April 1, 1944. In addition, there is a profile illustrating the proposed underground defenses of Hong Kong.

169.2. Also among the holdings are 36 "Strategic Engineering Studies" (SES) published by MID (1943-44) that illustrate geographic aspects of southern European and western Pacific countries, regions, and islands of strategic importance. These include terrain intelligence studies of Sicily, southern Italy, France, Albania, Yugoslavia, the Philippines, Japan, southwestern Formosa, Netherlands New Guinea, southern Sumatra, the Moluccas, the Caroline Islands, and the Mariana Islands, as well as airfield site studies of Hokkaido, Japan, and southern Sumatra.

169.3. A number of attachments prepared for reports by the Securities and Exchange Commission are included as well, having been received by the FEA in 1943. Among these are maps collected for a study of the highways of southern France; maps relating to a study of railways, ports, and terminals in Indochina; maps and photographs (including aerial photographs) pertaining to ports, harbors, beaches, aqueducts, and health and sanitation in Sicily and Sardinia; and sketches, maps, and photographs of coke ovens in the Saar-Lorraine area of France and Germany and in the Lowland countries. The texts of the reports on Sardinia and on coke ovens are included.

169.4. Also among the records are the attachments for British ISIS Reports on France, Corsica, Sicily, Morocco, Senegal, northern Sumatra, and Burma (1941-44). These attachments consist of maps that show such information as topography, roads, defenses, and landing beaches; city plans, including some showing fire hazard areas; charts, including berthing plans; and aerial mosaics and photographs of coasts, landing beaches, and towns.

169.5. Engineering Plans: Approximately 950 blueprints of equipment designed for the South Manchuria Railway Company from about 1928 to 1933 are among the records. These detail plans relate to railroad locomotive component parts that were apparently utilized by the Japanese during World War II.

RG 171 Records of the Office of Civilian Defense

171.1. Aerial Photographs: There are about 110 aerial photographic prints (vertical and some oblique), as well as some aerial negatives of areas in California, including the San Fernando Valley, Morro and Avila Bays, San Luis Obispo, and an Alcoa aluminum plant among the holdings. These images were apparently taken for camouflage studies (1941-42).

RG 173 Records of the Federal Communications Commission

173.1. Maps & Charts: Among the records of the Commission are copies of five charts showing the locations of submarine attacks and SOS reports in 1942 near the Atlantic, Pacific, and Gulf coasts of the United States and in the Caribbean; 28 diagrams showing the Japanese Navy communications network in the Southwest Pacific (August 1942-January 1943); eight diagrams showing German communications networks connecting European cities; charts showing German "clandestine espionage circuits" monitored at North Scituate, Rhode Island, in November 1943; charts showing "active radio telephone circuits," operated by the American Telephone and Telegraph Company, with a statement of censorship provisions for international calls (July 1942); and a radio facilities map of Cuba (January 1942).

RG 175 Records of the Chemical Warfare Service

175.1. Engineering Plans: Included are nine blueprint plans for gas and chemical bombs (from 250 to 2,000 pounds) designed at the Chemical Warfare Center at Edgewood Arsenal, Maryland, from February to July 1942.

RG 177 Records of the Chiefs of Arms

177.1. Maps & Charts: Among the records are about 20 site plans of U.S. military bases in the United States (1903-26), as well as a plan for the defense of

Corregidor Island in the Philippines (1910). Most of these bases continued in operation during World War II.

177.2. Engineering Plans: The records include a copy of the blueprint plans for a mine planter ship designed for the Coast Artillery Corps in 1940.

177.3. Architectural Drawings: Standard seaplane hangar plans designed for use in U.S. coastal defense areas and in the Philippines, Hawaii, and the Panama Canal Zone (1917) are among the records. Hangars constructed from these plans probably continued in use during World War II.

RG 178 Records of the United States Maritime Commission

178.1. Maps & Charts: The records consist of a map of the United States showing shipyards that were building vessels for the U.S. Maritime Commission in February 1943; a 1940 map showing U.S. trade routes worldwide and the "Combat Area" around Great Britain proclaimed by President Roosevelt on November 4, 1939; and a 1946 map of U.S. foreign trade routes.

RG 179 Records of the War Production Board

179.1. Maps & Charts: Included are two maps showing the locations of new and expanded Army and Navy munitions plants in the United States (1941), and a map of the United States showing War Production Board regions (September 1942).

RG 187 Records of the National Resources Planning Board

187.1. Maps & Charts: Among the cartographic records of the Board are about 100 maps showing the locations of military facilities, defense plants, and defense housing areas throughout the United States (1941-42), including a few site plans and land ownership maps for proposed defense plants. Other maps show the locations of strategic minerals and transportation routes of military importance within the United States (1939-43). Graphs, statistical charts, and cartograms relate to such subjects as the value of defense contracts awarded to the different industrial areas; the expansion of war production facilities; wartime planning relating to manpower, construction of military training centers, and defense housing; and the postwar agenda of the Board (1940-42).

RG 196 Records of the Public Housing Administration

196.1. Architectural Drawings: The records include about 1,000 manuscript and blueprint plans of Federal Public Housing Authority defense housing projects in 14

States, the District of Columbia, and Puerto Rico (1941-47). Among these are architectural design, construction, and detail plans designed for individual projects, as well as standard working drawings for temporary dwelling units around the country. In addition, there are more than 100 plans relating to temporary dwelling units and service buildings for defense workers, war dormitories, wood frame and steel barracks, veterans' temporary housing, temporary emergency housing for the United Kingdom and Norway, and the conversion of temporary war housing for permanent use under the provisions of the Lanham Act (1942-47).

196.2. Maps & Charts: Site plans, land ownership maps, and boundary and topographic surveys of sites for Federal Public Housing Authority defense housing projects (1941-47) are filed among the architectural records.

RG 210 Records of the War Relocation Authority

210.1. Maps & Charts: The records include site plans and general maps showing the locations of buildings, roads, and utility lines for 10 Japanese relocation centers situated in the States of Arkansas, Arizona, California, Idaho, New Mexico, Utah, and Wyoming, and for the Fort Ontario Refugee Shelter in New York (1940-45).

210.2. Architectural Drawings: There are more than 100 plans relating to buildings and structures constructed for relocation centers during the war. Most of these architectural drawings relate to the Jerome Relocation Center in Arkansas (1942-43), and include plans for administration buildings, barracks, guard houses, hospitals, recreation buildings, and service buildings.

RG 215 Records of the Office of Community War Services

215.1. Maps & Charts: The cartographic holdings consist of one map prepared by the Federal Security Agency to show the location of a U.S. Army Reservation near Blackstone, Virginia (1942).

RG 219 Records of the Office of Defense Transportation

219.1. Maps & Charts: The records include eight cartographic items relating to transportation systems and the movement of coal and petroleum reserves within the United States during World War II. Among these are cartograms showing the movement of bituminous coal from mining districts to Great Lakes ports and along the Great Lakes and the St. Lawrence River (1941); maps showing traffic density on major U.S. rail systems (1942); a cartogram showing the flow of crude oil through pipelines into the New York area (1943); and a map showing Office of Defense Transportation regional, district, and field offices (1944).

RG 224 Records of the Office of Labor (War Food Administration)

224.1. Maps & Charts: Included are two copies (one annotated) of a preliminary edition of a map showing basic land resource areas of the United States, drawn in connection with "Estimates of the Conservation Needs of the United States" (June 1944).

RG 226 Records of the Office of Strategic Services

226.1. Maps & Charts: Among the records are about 7,500 thematic maps, charts, plans, graphs, and cartograms relating to countries and areas throughout the world (1941-45). Included are maps showing topography; transportation systems; waterways; power systems; communications systems; political boundaries; city plans; military activities; and the locations of resources, industries, agricultural products, vegetation zones, climatic zones, and population, ethnic, and religious concentrations in countries throughout the world, but especially in Europe, Asia, and Africa.

226.2. The maps pertaining to military activities include many relating to the North African, European, and Russian fronts and a few relating to the war in China and in the Pacific that show offensive movements and changes in the battle lines at different times. These include a map of southeast China showing Japanese military withdrawals (September 1942); weekly maps showing the military situations in Tunisia from February to May 1943 and on the Russian front from February to April 1944; a map of the Russian summer offensive from July to October 1943; and a bound set of 50 maps that shows the changing military situations in Europe on a weekly basis from May 30, 1944, to May 15, 1945.

226.3. Other subjects covered include transport facilities linking Canada, Alaska, and eastern Siberia (1943); existing and proposed Air Transport Command routes around the world (1943); linguistic areas and German settlements in Guatemala (1943); major strategic resources in central Africa (1942); coal and oil production in the Eastern Hemisphere (1942); and the political status of French colonies during 1942. Other themes covered are locations of attacks on merchant vessels in the Atlantic (1942-43); German coast defense bases from Norway to France (1943); OSS theaters of operation in Europe and Asia (May 1945); supply routes to the Russian front (December 1941); German and Finnish military forces in Norway, Finland, and northern U.S.S.R. (April 1942); air raids over western Europe from July to September 1943; the political divisions of Poland under German rule (March 1942); civil and military administrative zones in France (August 1942); the beaches of Normandy (1943-44); and the ports of Dunkirk and Cherbourg, France (1944). In addition, there are maps depicting the resistance movement in German-controlled Italy (January 1944); the Brenner Pass routes from Italy to Austria (1943); the automotive and aircraft industries in Axis Europe (1943); the Axis occupation zones in Greece and Yugoslavia (1942); and the Allied occupation zones in Germany and Austria (July 1945).

226.4. Among the topics relating to Asia and the Pacific are airfields in the Netherlands East Indies bombed by the Japanese and by the Allies (February 1942); transportation routes in Australia (1942); the proposed location of the Trans-Jordan pipeline (June 1942); supply routes to China through the U.S.S.R. (July 1942); strategic points in and around Calcutta, India (April 1942); possible Japanese drives in China and into southeastern Siberia (June-July 1942); pre-1931 administrative areas in Manchuria; Japanese puppet administrative districts in north China (July 1945); areas of food surplus and deficiency in China (December 1945); city plans of Saigon and Hanoi, Indochina (1945); the aircraft industry in Japan (1942); political, economic, and military administrative areas of Japan (1944); and plans of hydroelectric and steam electric plants in Japan (1944).

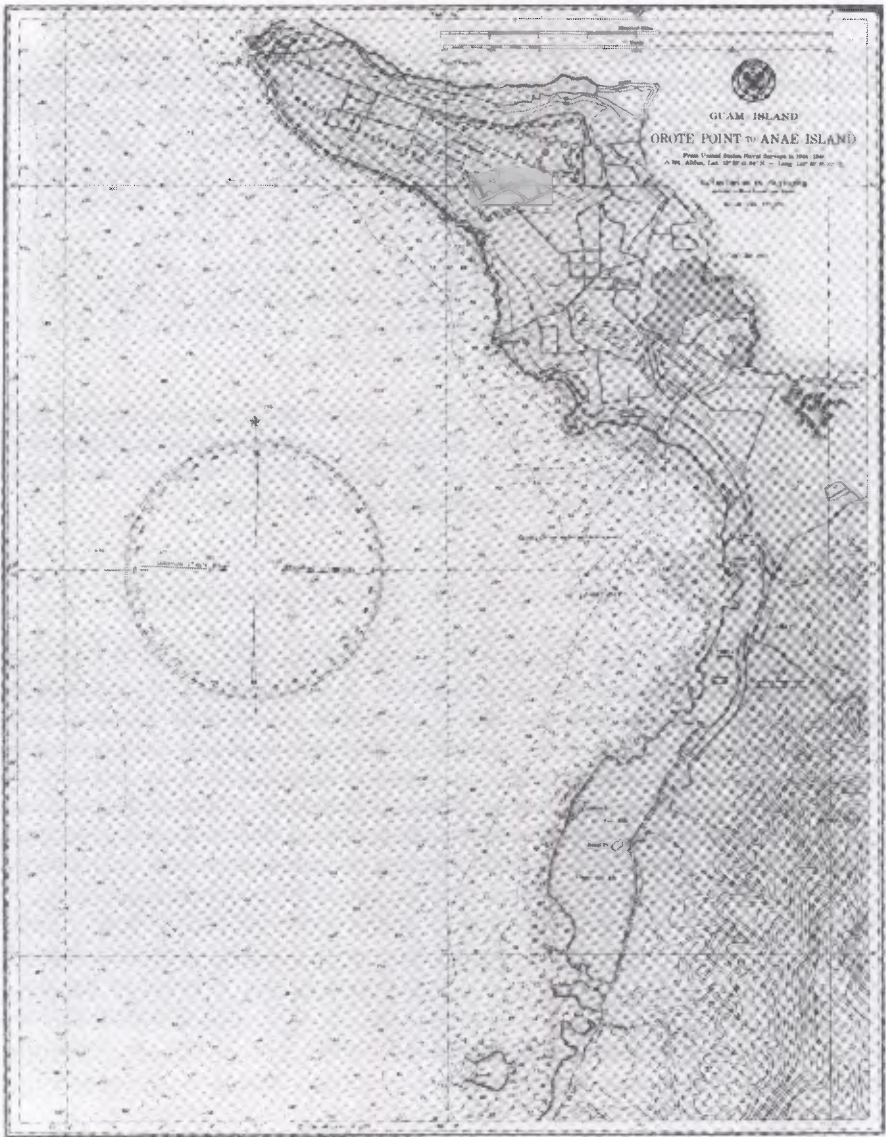
226.5. In addition, there is an "Atlas of Population and Migration Trends" that consists of 41 maps relating to human and natural resources worldwide (November 1945). These maps were compiled by the OSS to show "some of the major problems to be faced following the conclusion of World War II."

RG 227 Records of the Office of Scientific Research and Development

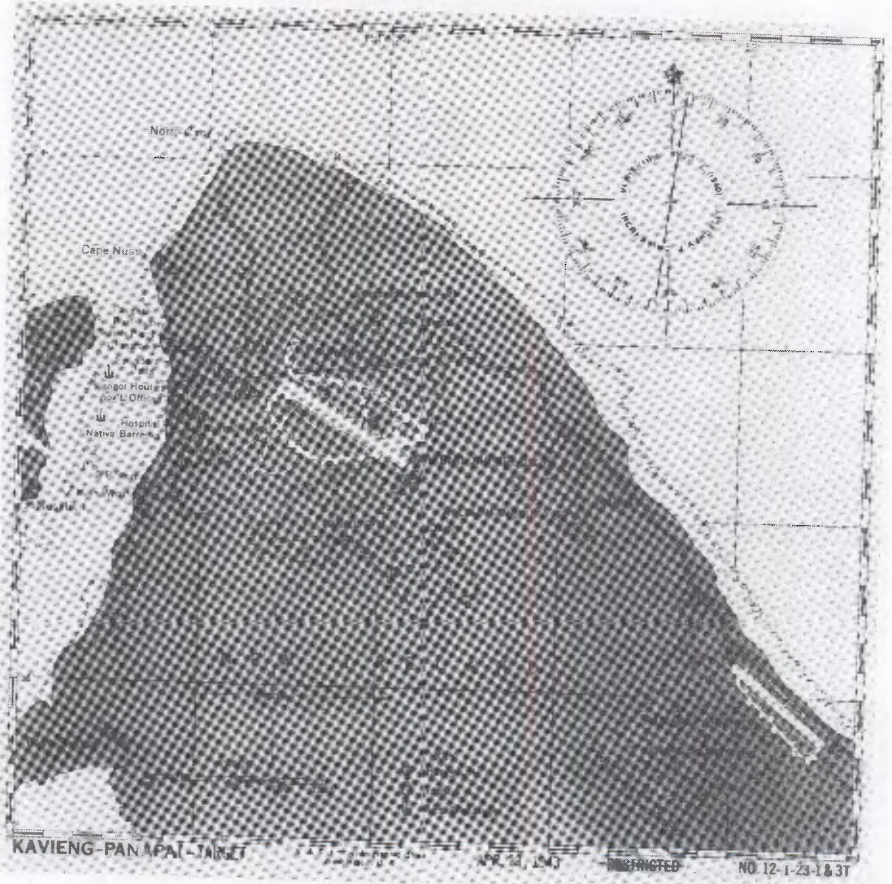
227.1. **Engineering Plans:** The records consist of about 3,000 technical drawings and blueprints of military ordnance components, as well as some contract papers, parts lists, and reports from the files of the Office of Scientific Research and Development (OSRD) (1942-46). Most of the plans are by private contractors and scientific institutions, although many are copies of drawings from the Division of Ordnance Development of the National Bureau of Standards. Some of the plans are annotated to indicate their relationship to the numbered divisions of the National Defense Research Committee of OSRD. Among the items represented by drawings are mortar shells, torpedoes, a 20mm machine gun, a 30mm machinegun barrel, a navigational marker buoy, an altimeter, and a radio proximity fuse. Four comparative charts printed by the Johnson Automatics Company show drawings of ammunition and small arms in use by the principal nations involved in the war. Among the published reports is one dated June 15, 1945, that describes rocket-testing facilities developed at the Naval Ordnance Test Station at Inyokern, California.

RG 234 Records of the Reconstruction Finance Corporation

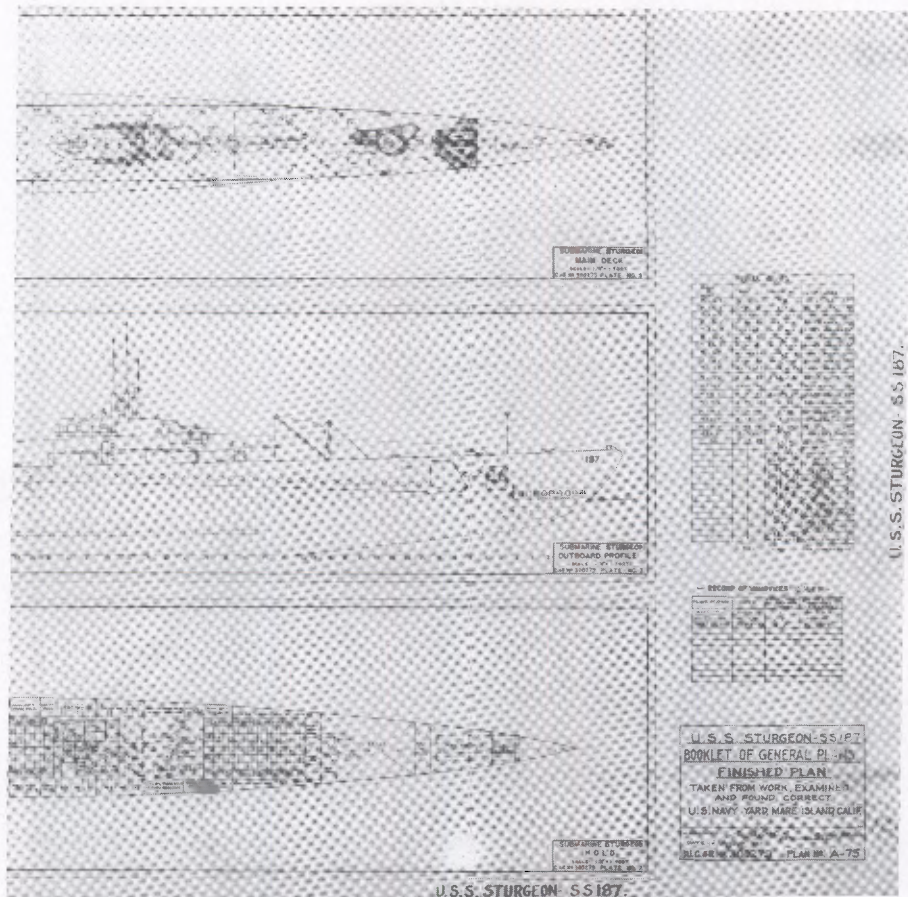
234.1. **Maps & Charts:** The records of the Reconstruction Finance Corporation include records of three of its subsidiaries: the Rubber Development Corporation (RDC), the Defense Supplies Corporation (DSC), and the Defense Plant Corporation (DPC). The RDC records consist of about 250 maps produced or acquired by the Corporation to assist in development and procurement of natural rubber from South America (1943-44). Included are manuscript and published maps of areas in Brazil, Colombia, Peru, and Bolivia showing roads, trails, rivers, vegetation, rubber-



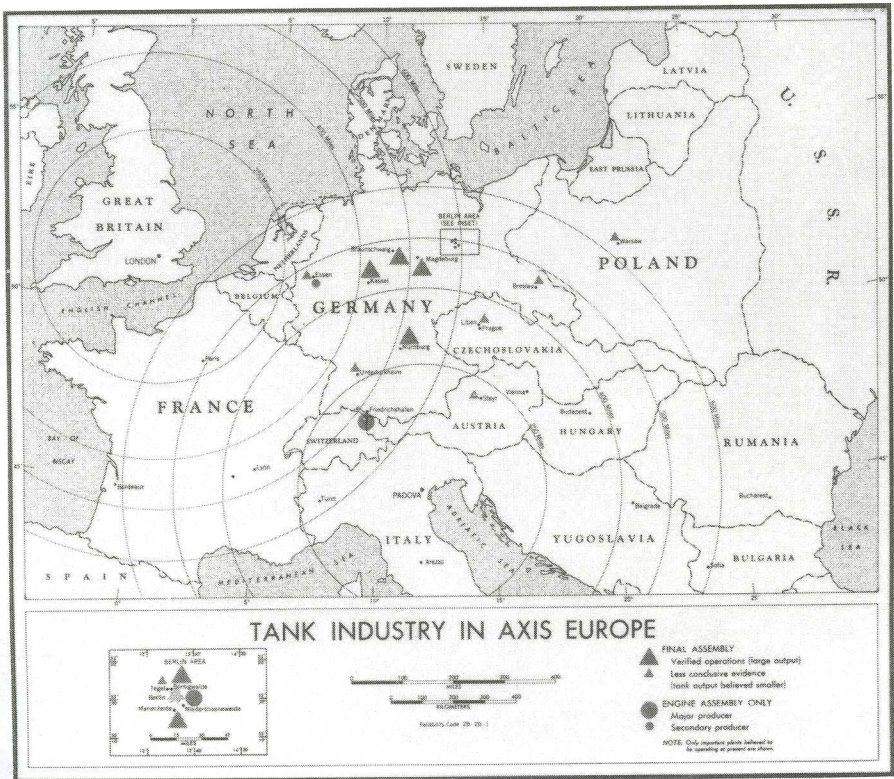
Charts. The Hydrographic Office provided nautical field charts of many of the Pacific islands shortly after they were recaptured from the Japanese. This one shows part of the western coast of Guam, where the 1st Provisional Marine Brigade landed on July 21, 1944, as part of Operation Forager. *Record Group 37, Records of the Hydrographic Office, 2028, Nautical Field Chart, Hydrographic Office Field Charts, Pacific, Guam, 1945.*



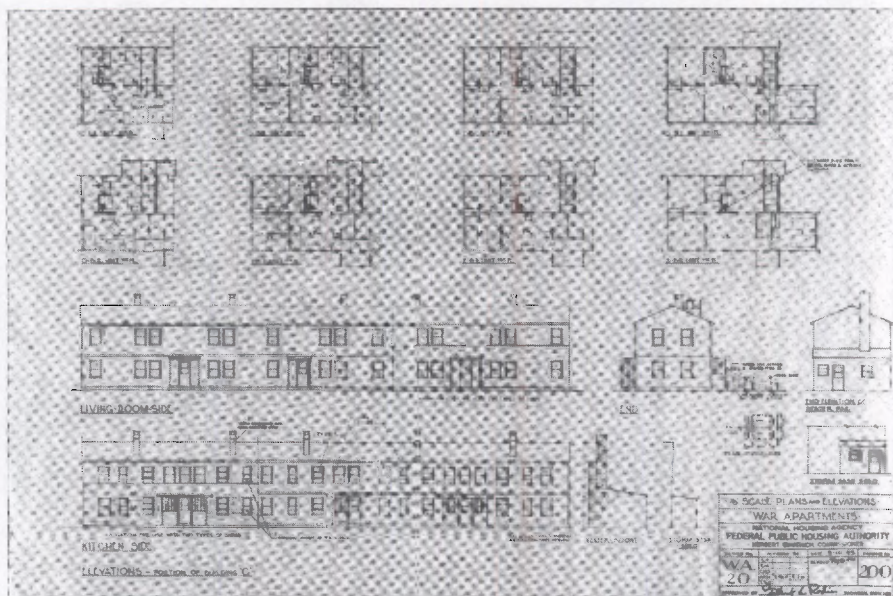
Target Charts. Target charts, such as this one of Japanese airfields on New Ireland Island, were designed to help U.S. airmen locate and identify their targets. The depiction of anti-aircraft positions on target charts of the southwest Pacific was common, although this information rarely appeared on target charts used in other theaters of war. *Record Group 37, Records of the Hydrographic Office, 12-1-23-1 & 3T, NACI, Bismarck Archipelago, April 23, 1943.*



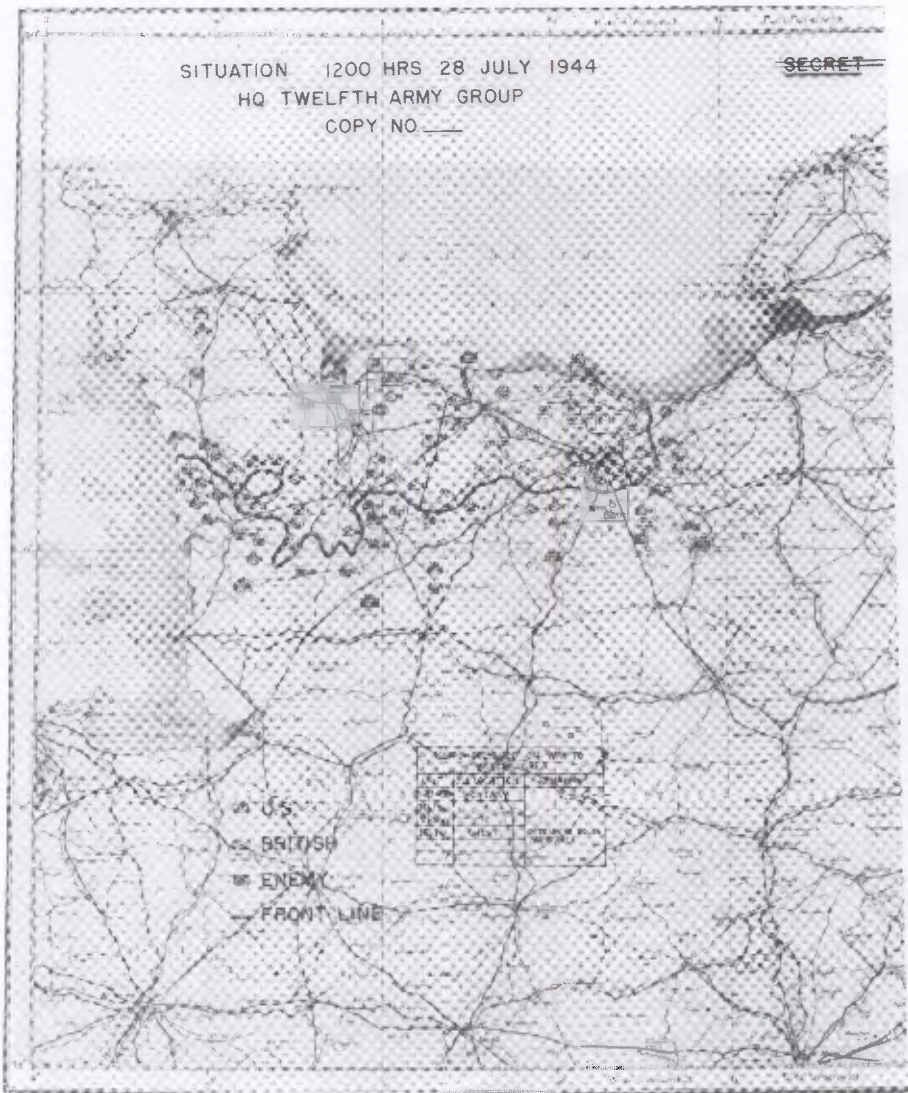
Engineering Plans-Ship Plans. The submarine U.S.S. *Sturgeon* (SS-187) was launched in 1938 and served throughout World War II. After earning 10 battle stars in the Pacific on 11 war patrols, the *Sturgeon* ended her career as a training ship at New London, CT, in 1945. Although most plans of U.S. Navy ships constructed during World War II remain in the custody of the Navy, the Cartographic Branch of the National Archives holds the plans of ships constructed before 1940. *Record Group 19, Records of the Bureau of Ships, Alphabetical File 2, Pacific, 1939.*



Thematic Maps. Thematic maps were produced by the Office of Strategic Services throughout the war to give strategists a clearer picture of the military, economic, and political situations, and to assist in the development of bombing strategy. This map shows the locations and relative importance of tank assembly plants in Axis Europe. *Record Group 226, Records of the Office of Strategic Services, OSS 2653, September 1943.*



Architectural Plans. During the war a primary responsibility of the Federal Public Housing Authority was to provide housing for workers in war industries under such legislation as the Lanham Act. Standard plans, such as this one for "war apartments" were used in housing construction projects throughout the United States. *Record Group 196, Records of the Public Housing Administration, 59-A-2548, Home Front, Lanham Act, 1942-45.*



Situation Maps. These maps were often prepared on a daily basis to give military planners a concise picture of progress on a particular military front. This map shows the situation in Normandy on July 28, 1944, shortly before the capture of Avranches and the subsequent breakout across France. *Record Group 331, Records of Allied Operational and Occupational Headquarters, World War II, SHAEF, 12th Army Group.*



Aerial Photographs. German-flown aerial photograph of Grodna, U.S.S.R., formerly in Poland. The photograph was taken October 26, 1944, several months after the Russian Army recaptured the city. Although aerial photographs such as this were produced for military purposes, they are frequently used today by genealogists wishing to document the appearance of their ancestral towns. *Record Group 373, Records of the Defense Intelligence Agency, GX 4145 SD, Exposure 574, Eastern Front-U.S.S.R. (vertical).*

producing areas, rubber camps, and landing fields, as well as a few city plans and site plans of airports, camps, and RDC facilities. A set of four annotated maps of northern South America shows rubber producing areas and aircraft and radio facilities, and a series of about 200 maps shows the boundaries, acreages, and names of overseers of individual rubber plantations in northern Peru. Records of the DSC consist of maps, profiles, plans, and related field notebooks pertaining to airport sites in Brazil. Sketches relating to the construction of buildings are included in some of the notebooks.

234.2. The records of the DPC include about 100 maps relating to DPC industrial projects that were leased to private corporations throughout the United States as part of the Plancor project (1942-45). These include site plans of steel-and-iron producing plants and of a few coal mines, as well as some mineral exploration maps.

234.3. Architectural Drawings: Among the DPC records are approximately 150 plans of buildings and structures designed for war-related industrial projects operated by lessee corporations (Plancor) at steel plants and related facilities throughout the United States (1942-45). These include plans of individual plant buildings and furnaces, as well as general plans for warehouses and machine storage sheds.

234.4. Engineering Plans: The DPC records include about 50 plans of steel-processing and ore-extracting equipment in use at a number of defense production plants leased to corporations (Plancor) in the United States (1942-45).

234.5. Aerial Photographs: Among the records of the RDC are about 150 oblique and vertical aerial photographs of the heavily forested Porto Velho region in Brazil taken on July 29, 1943.

RG 239 Records of the American Commission for the Protection and Salvage of Artistic and Historic Monuments in War Areas

239.1. Maps & Charts: The records include more than 1,400 photoprocessed copies of maps of countries, provinces, regions, and cities in Europe, Asia, and the Southwest Pacific annotated to show locations of monuments and sites of cultural significance in war areas that were recommended by the Commission for protection against destruction. The numbered sites are identified by attached lists. Countries and regions covered include Albania, Austria, Belgium, Bulgaria, Corsica, Czechoslovakia, Denmark, France, Germany, Greece, Hungary, Indochina, Italy, Japan, Korea, the Netherlands, the Netherlands East Indies, Norway, the Philippine Islands, Romania, Sardinia, Sicily, and Yugoslavia.

RG 242 National Archives Collection of Foreign Records Seized, 1941-

242.1. Maps & Charts: Among the foreign records seized during World War II that are now in the National Archives are more than 22,000 cartographic records. Most of these are German maps and charts of areas in Europe and North Africa; others include captured Italian records that relate to Europe and Japanese maps and charts of areas in the Far East and the Pacific. There are also a number of Russian maps relating to the war on Germany's Eastern Front that were apparently captured by the Germans before their retreat from the U.S.S.R.

242.2. Many of the captured German maps form incomplete sets of standard topographic map series used by the Germans throughout the war. These include the "International Weltkarte" sheets covering much of Europe and North Africa at the scale of 1:1,000,000; the "Deutsche Weltkarte" series covering North Africa at 1:500,000; a series covering Europe at 1:500,000; a series covering central and northern Europe at 1:300,000; a German printing of a French map series of France at 1:200,000; three series covering Germany, Italy, and the U.S.S.R. at 1:100,000; and a series covering France at 1:80,000 (1937-44). Index maps for most of these map series are lacking.

242.3. Seized German records concerning Great Britain include a number of plans of English cities overprinted to show bombing targets (1940-41); hydrographic charts of coastal areas that have been overprinted with information of military utility (circa 1943); outline maps of Great Britain overprinted to show the locations of industrial resources, munitions centers, and airbases (1940-44); and a map entitled "Pandora" showing fortifications at Milford Haven and Pembroke, Wales (1941).

242.4. Among the German records relating to France are a number of annotated and badly worn tactical maps showing German defenses, troop positions, and troop movements along the Normandy coast, on the Cotentin Peninsula, in the Falaise Gap area, and in the vicinity of Metz (1944); photographic negatives and transparencies of German daily situation maps of Normandy (June 6-30, 1944) and of German Order of Battle maps in northwest France on seven dates between January 6 and June 22, 1944; and a map showing the principal roads and German fuel stations throughout western Europe (1943). Outline maps of France are overprinted to show locations of key military targets, including troop concentrations, seaports, railroad bridges, power stations, and manufacturing centers (1939-42). A number of maps are overprinted to show defenses in eastern France and the Lowland countries (March-May 1940), and a map overlay shows details of the Grebbe line in the Netherlands as of April 10, 1940.

242.5. German maps of Germany include a set of troop-billeting maps that show the numbers of soldiers to be stationed in the individual military regions (1937-42); a map showing industrial and mining regions of Germany (1936); and published road maps of western Germany and the neighboring countries (1944). Records relating to eastern Europe include a German pamphlet and seven maps pertaining to the

German population in Czechoslovakia (1938); a Czech topographic map of that country (1938); a German topographic map of Hungary and eastern Czechoslovakia showing the boundaries as of April 4, 1939; several German aerial charts of Romania (1940); maps showing defenses in Romania and Yugoslavia (1940); and several topographic maps of Crete (1941-43).

242.6. Maps of the U.S.S.R. include German maps of western Russia showing military districts, administrative boundaries, roads, and geology (1941); a set of six German campaign strategy maps illustrating the plans for Operation Barbarossa (1941); two maps showing the position of the Russian Army on November 30, 1941; copies of two maps showing the military situation in the U.S.S.R. on August 3, 1943; three Russian maps of the area around Moscow overprinted in German to show the locations of barrage balloons, anti-aircraft batteries, and searchlights; German maps showing Russian defenses (1941-43); maps showing transportation links between southern Russia and the Middle East; and an AMS map of the Russian frontiers with Iran and Turkey with an attached overlay annotated in German to show estimates of Russian troop dispositions and movements in the area (1945). In addition, a number of German textual and graphic records relate to the command structure of the Russian Army, to the physical structure of Russian defenses, and to war-related industries in the U.S.S.R. (1940-41). There are a large number of printed Russian strategic and tactical maps, at scales ranging from 1:42,000 to 1:420,000, of portions of the U.S.S.R. and the neighboring European countries from Finland to Romania. Most of these badly worn maps were annotated by the Russians to show troop positions and movements at different times during the war and were apparently captured by the Germans.

242.7. Among the records relating to the Mediterranean theater are maps seized from both the Germans and the Italians. German records of Italy include a set of maps showing the defenses of northern Italy (1944); an outline map overprinted to show the location of airfields in Italy and neighboring Mediterranean countries (1945); an outline map overprinted to show the principal roads and bridges in Italy, Sicily, Sardinia, and Corsica (1943); and charts of Italian ports and of part of the west coast of Italy (1943). Seized Italian records include a map of Italian defenses along part of its border with Austria (1937); copies of topographic sheets of the same area annotated to show the defenses of the Italian XIV Corps (1940); and a badly worn aeronautical chart of Sicily annotated to show Italian Air Force positions. All captured maps and charts of North Africa are printed in German. These include special editions of the "Deutsche Weltkarte" series overprinted to show inset city plans, military objectives, and geographical conditions likely to affect military maneuvers in Algeria and Tunisia (1943); copies of mine field plans (1943); and a number of topographic maps of areas in Algeria and Tunisia (1941-43).

242.8. Records of the Far East and the Pacific islands include a large number of Japanese hydrographic charts or Japanese printings of British charts of the waters off Japan, China, Malaya, the Netherlands East Indies, the Bismarck Archipelago, the Mariana Islands, and the Caroline Islands, as well as Japanese maps or Japanese

printings of British or U.S. maps of Japan, Korea, China, the Netherlands East Indies, New Guinea, and the Philippine Islands. Many of the maps are annotated to show military situations, including some that illustrate the Japanese invasion of China beginning in 1937. There are several Italian-language maps relating to the military situation in China during this period as well (1937-38). Seized German maps of the Far East include an English-language transportation map of Manchuria by the South Manchuria Railway Company (1935); an administration map of northern Sumatra (1933); and a city plan of Merauke in Netherlands New Guinea.

242.9. There are 59 German handbooks and manuals prepared for the use of German submarine and surface vessel commanders and naval staff officers. Many of these publications combine chart atlases and textual description to assist the commanders in locating and identifying landmarks, sea lanes, naval strongholds, coastal defenses, tank farms, and other important facilities in foreign waters, and to prepare them for weather, climate, ice formations, tides, currents, foreign mining techniques, and communications systems throughout the world (1935-44). Other publications cover special subjects of interest to the German Navy, such as the oil supply of Great Britain and the tactical instructions of the British fleet (1938-41). Manuals for Admiralty staff officers discuss geography, economy, military leadership and organization, naval strength and tactics, and fleet location of Germany's potential naval adversaries (1938-40). Areas covered include the west coast of Africa, Albania, Algeria, Canada, Egypt, Estonia, France, Great Britain, Greece, Iceland, Japan, Latvia, Lithuania, Malta, the Netherlands, Poland, Portugal, the Portuguese colonies, South Africa, Spain, the Suez Canal, Sweden, Turkey, the United States, and the U.S.S.R.

242.10. Aerial Photography: Among the records are approximately 8,000 aerial photographic records that were produced by the German Air Force to assist it in its bombing missions against Allied facilities in Europe, North Africa, and the Middle East. Most of these are target dossiers, which usually consist of a map, an overprinted aerial photograph, and a description of the site in German. Some dossiers may also include original aerial photographs, aerial negatives, mosaics, overlays, and reference maps. The dossiers primarily cover sites in Algeria, Egypt, France, Great Britain, Iraq, Italy, Libya, and Tunisia. Some coverage also exists for Aden Colony (southern Arabia), Albania, Bulgaria, Cyprus, French Guinea, French Morocco, Greece, Iceland, Iran, Ireland, Ivory Coast (Upper Volta), Malta, Mauritania, Palestine, Senegal, Sudan, Syria, Trans-Jordan, and Yugoslavia.

242.11. Also included are German publications relating to specific types of targets in individual countries. Among them are: an atlas of important military airfields in Great Britain that consists of maps and aerial and ground-level photographs (1940); lists of landing fields in France (1940) and Italy (1944); an atlas of seaports in France that consists of maps, charts, and aerial photographs; an atlas of seaports in Great Britain as seen from photographs of terrain models (1941); a list of seaports in Italy (1944); a compilation of maps and aerial photographs of British seaports and industrial cities, on which are located multiple targets (1940); a four-volume

compilation on the British air armaments industry (1940); a compilation on industries in London, including maps and aerial and ground-level photographs (1940); a report on flooding possibilities along the coast of England near Eastbourne (1941); and a compilation on bridges in eastern Norway, including profiles and maps (1944). In addition, there are lists of German aerial photographic archival materials on France (1940) and Great Britain (1941 and 1944). Photographic negatives of annotated aerial photographs, maps, and pages of German text, were apparently prepared for a compilation on industrial targets in the U.S.S.R. (1942).

242.12. Other records relating to the U.S.S.R. include aerial photographs, mosaics, and maps of widely divergent cities, areas, and subjects. Among them are annotated aerial photographs of northern ports such as Leningrad, Murmansk, and Archangel; overprinted oblique aerial photographs of Sevastopol and its defenses (1942); overprinted aerial photographs of minesweepers in Russian ports; an annotated mosaic of part of the Psel River east of Lubny; several mosaics annotated to show movements and actions of German military units; and a collection of overprinted aerial photographs showing bridge sites near Kremenchug (1944).

242.13. Aerial photographs used by the German X Air Corps for operations in North Africa and the Mediterranean were compiled for a war diary of the unit. These include annotated and unannotated images of towns, airports, barracks, and other ground installations (primarily in Algeria, Tunisia, Malta, Majorca, and Gibraltar) as well as of ships in port and at sea (1941-42). Also among the German records are maps and aerial photographs of cities and areas in France that are overprinted to show bombing targets but are separated from target dossiers; mosaics of cities and areas in France, primarily along the northwest coast (1942); mosaics of part of the east coast of England at Lowestoft and of part of the Bristol Channel coasts at Bideford, England, and Pembroke, Wales (1943); enlargements of aerial photographs of the area south and east of Bologna, Italy, near the towns of Faenza, Imola, and Vergato (1944); and aerial anaglyphs (stereoscopic views) of the passes through the Appenine Mountains south and west of Bologna, including Futa Pass (1943-44).

RG 243 Records of the United States Strategic Bombing Survey

243.1. Aerial Photographs: The records include about 2,000 annotated aerial photographic prints, which were attached (along with textual notes) to stiff card backings, and used to identify aerial targets in Japan and Korea, including industries, munitions plants, ammunition depots, shipyards, and airfields.

RG 253 Records of the Petroleum Administration for War

253.1. Maps & Charts: Among the records are more than 1,100 maps, charts, graphs, and cartograms produced or acquired by the Petroleum Administration for

War that show petroleum-producing areas, geologic formations, gas and oil fields, oil concessions, prospecting areas, refineries, pipelines, and other petroleum transportation routes in the United States and around the world (1938-45). These include a nine-sheet map of the world showing oil and gas fields and facilities; maps showing pipelines and wartime pipeline projects in the United States (1940-42); maps relating to the Canol project in Canada and Alaska (1943); a map showing oil fields, pipelines, refineries, and shipping routes in the Caribbean (1943); a map showing synthetic oil plants in Germany (1943); maps showing the locations of oil fields and concessions in the Middle East; and a map of "projects" in the vicinity of northern Burma, including the Burma Road, Ledo Road, pipelines, and the Operation Matterhorn airfields. Some site plans are included, such as those of individual oil fields in Louisiana and Texas (1941-43). Plans of the Bahrain refinery and the Sitra petroleum terminal in Bahrain show precautions taken against air raids (1941). A bound set of plats shows the ownership of lands from Louisiana to North Carolina through which the Plantation Pipeline Company was laying pipelines for the war effort (1941). Another bound set of maps shows well-drilling plans for 1945 in potential oil-producing areas in South America, Mexico, the Caribbean, Egypt, India, and the Middle East. Graphs among the records show world petroleum resources and consumption attributed to the United States and other nations throughout the World War II period (1945).

RG 260 Records of the United States Occupation Headquarters, World War II

260.1. Maps & Charts: The records include bound sets of maps prepared by the OSS that relate to the administration of German regions and provinces in all of the Allied occupation zones (1945). Information about individual maps is available in the

from numerous U.S. military sources, including Army, Navy, and Joint Army-Navy organizations. The majority of the reports relate to China, Japan, and the Japanese-controlled areas in the Pacific and the Far East, although the European and Mediterranean theaters are represented as well. Many of the reports include attached aerial photographs, mosaics, photomaps, and published maps and charts.

289.2. Among the records are a report on naval shipbuilding in Germany (January 1943); a report on German naval camouflage used on destroyers at Dunkirk (November 1943); an English translation of a 1942 German handbook on winter warfare; Navy reference manuals and silhouette comparison charts for the identification of military and merchant vessels of the United States and foreign countries and of foreign military aircraft (1943-45); a "Photo Industrial Study" of the explosives industry to aid in aerial photographic interpretation (1944); a report on enemy airfields on Wake Island, the Marshall Islands, and the Gilbert Islands (July 1943); a CINCPAC/CINCPOA bulletin on defenses on Iwo Jima (June 1945); a report on the port of Shanghai (1945); a CINCPAC/CINCPOA bulletin on prisoner-of-war camps in Japan and Japanese-occupied territory (June 1945); a Joint Army-Navy Intelligence Study (JANIS) of southwest Japan (1944-45); an anti-aircraft report with attached "Flak" maps on Kure, Japan (July 1945); and damage-assessment reports and damage plots relating to the atomic bomb attacks on Hiroshima and Nagasaki (August 1945).

RG 313 Records of Naval Operating Forces

313.1. Maps & Charts: Included among the records of CINCPAC/CINCPOA are approximately 725 maps, photomaps, and charts of the island groups and countries in the Pacific theater of war. This series is especially strong on Okinawa (Ryukyu Islands); Guam, Saipan, and Tinian (Mariana Islands); Kwajalein (Marshall Islands); the Gilbert Islands; the Caroline Islands; Iwo Jima (Bonin Islands); Guadalcanal and New Georgia Island (Solomon Islands); and Kyushu (Japan). Other island groups and countries covered are the Philippine Islands (Leyte and Luzon), the New Hebrides Islands, China and Formosa, the Bismarck Archipelago, Wake Island, Hawaii, and Korea. Many of these manuscript, printed, and annotated maps and charts were prepared by the 64th Engineer Topographic Battalion for JICPOA, USAFICPA, USAFCPBC, and CICSOPAC, and show topography, defenses, and operational information. Included are "Briefing Charts" showing airfields and military and industrial targets; "Flak" maps showing Japanese aerial defenses on Kyushu and the Ryukyu Islands; "Bogus" maps of Makin Atoll (Gilbert Islands) and Kwajalein Atoll (Marshall Islands), which feature false place names; and 22 maps relating to military operations in the Okinawa Islands (March-May 1945).

313.2. There are also approximately 1,400 manuscript charts illustrating war patrols of individual U.S. Navy submarines (whose names begin with the letters G to W inclusive) in the Pacific theater (1943-45); 450 overlays (Tracks of Ships) showing daily locations, movements, and actions of U.S. Navy, Allied, and enemy surface vessels, submarines, and aircraft in the Pacific Ocean and the Philippine and South

China Seas (October 1944-January 1946); 225 Action Plots showing naval movements and actions in more limited areas of the Pacific theater to illustrate the progress of naval campaigns and operations (1944-45), including Operations Iceberg and Stalemate; and 10 overlays showing air search plans in the Pacific (December 1944-June 1945). A small selection of textual records (including operation plans and JCS reports relating to the closing military campaigns against Japan and the establishment of a military government there) includes a number of attached maps relating to such operations as Blacklist, Campus, Forager, and Stalemate.

313.3. Aerial Photographs: There are approximately 250 aerial photographs and mosaics filed among the cartographic records of CINCPAC/CINCPOA. Most of these aerial records relate to the Solomon Islands (New Georgia, Kolombangara, and Guadalcanal), although there are a few relating to Eniwetok and Kwajalein (Marshall Islands), and Saipan (Mariana Islands).

RG 319 Records of the Army Staff

319.1. Maps & Charts: Included are cartographic records relating to all of the major World War II military theaters, many compiled or annotated by the staff of the Army Center of Military History during the course of their historical work. Those pertaining to the European theater include: overlays prepared for the publication of maps that relate to the operations of the U.S. VII Corps from its landing on Utah Beach to the capture of Cherbourg (June 1944); an operations map showing the advance of the 30th Infantry Division of the VII Corps west of St. Lo (July 25, 1944); a copy of a German overlay showing the defenses of Le Havre (July 1944); maps showing landing beaches, topography, and roads along the coasts of France from Belgium to Brittany and along the Mediterranean (1943); copies of printed road maps of France; plans of defenses of the Maginot Line, particularly those west of Metz and those near the Luxembourg border (1930-44); three maps relating to the crossings of the Meuse River near Dinant, Belgium, by the 9th Infantry Division of the U.S. VII Corps (September 1944); an air routes map relating to the Market-Garden offensive in the Netherlands (September 1944); map overlays relating to the battles for the Schelde estuary in Belgium and the Netherlands (September-November 1944); a map relating to the evacuation of the U.S. Army support services across the Meuse in the vicinity of Liege, Belgium, during the Battle of the Bulge (December 1944); map overlays relating to the Siegfried Line and the Allied drive to the Roer River; operations maps and a terrain sketch of the area north of Aachen near Geilenkirchen and Linnich, Germany (November-December 1944); a four-sheet map showing defenses near Dillingen and Saarwellingen, Germany (December 1944); a map overlay showing bomb damage in Duren, Germany (December 1944); an operations map relating to the advance towards the Rhine River between Cologne and Koblenz by the 12th Army Group (1945); a map relating to the advance of the 3rd Armored Division east of Bonn (March 25-April 1, 1945); and a set of AMS and GSGS map sheets annotated to show the daily changes in the front lines of the 6th Army Group in Germany from

April 21 to May 1, 1945. Other records relating to the European theater include maps and overprinted aerial photographs prepared as illustrations for the volume of the published history of the U.S. Army in World War II entitled, *Three Battles: Arnville, Altuzzo, and Schmidt*; printed German topographical and road maps of Germany and other areas in Europe; maps showing administrative divisions in Germany and Austria (1943-44); and a printed post-operations map that shows operations of the U.S. 1st Army in Europe (1944-45).

319.2. Operations in North Africa are represented by a map showing airfields and defended areas near Oran, Algeria (1942); a map overlay relating to the Torch landings at Algiers (1942); a printed German road map of Tunisia (1941); an operations map of the Battle of Kasserine Pass (February 21-22, 1943); two dated maps showing troop dispositions along the Mareth Line in Tunisia (March 22 and March 24, 1943); and a map showing NATOUSA sectors, personnel centers, and training schools in North Africa in January 1944. Among the few records relating to the invasion of Sicily is an operations map that shows the plan for Allied landings on the island on July 10, 1943. Maps of Italy include a number of printed topographic and road maps; a sketch map showing supply areas of the German XIV Panzer Corps in southern Italy (December 1943); and maps of northern Italy annotated to show the advance of the front lines of the U.S. IV Corps in April and May of 1945. Two index maps show the areas covered by aerial photographs taken by Captain J. C. Hatlem for the U.S. Army Historical Division in Tunisia (1943) and in Sicily and Italy (1944-46). The countries of southeastern Europe are represented by a map showing transportation and industrial targets in the countries of Albania, Bulgaria, Greece, Hungary, Romania, and Yugoslavia (1943); photographic prints of Hungarian city plans; and two maps showing Axis defenses on the Mediterranean islands of Lesbos (Greece) and Kalymnos (Dodecanese Islands) in 1943. Maps of the Middle East include some that show roads, railroads, and pipelines in Iran and Iraq (1941-43). A map showing supply routes to the U.S.S.R. from the south also features this area.

319.3. Other maps relating to the U.S.S.R. include: a copy of a Russian map annotated to show Russian military districts and military units along the Chinese and Mongolian borders (October 1940); a map showing military bases and airfields on the coast of Siberia; a German city plan of Sevastopol (1942); a German map of the Caucasus region (1941); two German maps showing Russian defenses along the Dniester River east of Kishinev (1940); a GSGS air chart overprinted to show the advance of the German 1st Panzergruppe from the vicinity of Lublin, Poland, to Zhitomir, U.S.S.R., during Operation Barbarossa (June 22-July 10, 1941); a map relating to the German withdrawal across the Dnieper River at Kremenchug (circa 1943); a bound set of German operations maps relating to the war in the U.S.S.R. (July 1943-January 1945); an oversize map showing the front lines along most of the Russian front on particular dates between April 1, 1943, and September 1, 1944; a German-published volume, consisting of German text, operations maps, overlays, photographs, and graphs relating to the part played by the German Army Group

North in the war against the U.S.S.R. (1943); and a German map showing railroads in the U.S.S.R. near the border with Finland (1941).

319.4. Among the records relating to the Far East are: an oversize Japanese map of Southeast Asia, including much of the Netherlands East Indies, that shows the numbers and locations of military and civilian prisoners; a map of China showing war zones, areas of Japanese occupation, and the locations of military units in October 1942; a traffic circulation map of the area around Kunming, Kweilin, and Nanning in southern China; a perspective sketch of Singapore and vicinity before its capture by the Japanese; and an outline map of Burma annotated to show SEAC boundaries and the Burma and Ledo Roads (1944). Also included are six tactical maps of areas in Queensland, Australia, some of which are annotated to show military maneuver and target areas (1923-43); two operations maps of New Guinea (1943-44); a map showing Japanese defenses on the Pescadores Islands in the Formosa Strait (1941); operations maps relating to the battles at Lingayen Gulf and Bataan Peninsula on Luzon (December 1941-April 1942); map overlays showing operations on Luzon in 1945; a Japanese map with an attached English translation that indicates the locations, strengths, leaders' names, and radio stations of U.S.-Allied guerrilla units in the Philippine Islands (May 1944); four sheets of a Japanese map of Okinawa captured by the U.S. XXIV Corps (April 1945); map overlays relating to the Allied attacks on the Shuri defense lines and the operations near the southern end of Okinawa (April-June 1945); an operations map of the Allied assault on Ie Shima and a sketch of the defense system on the face of Iegusugu Pinnacle on that island (April 1945); and two published maps annotated to show the extent and reduction of Japanese control as well as the administrative boundaries of U.S. military commands in the Pacific (1942-45).

319.5. Records relating to Japan include a map of the country showing military bases, airfields, and naval districts (January 1941); two bound sets of AMS map sheets of southern and central Japan annotated to show defenses (1944); photographic negatives and prints of AMS maps and city plans of Japan annotated to show bombing targets; and a map showing the disposition of occupational air and ground units in the Pacific, Japan, and Korea as of March 15, 1946. A set of about 10,000 Japanese maps of prefectures and other administrative divisions in Japan is annotated in Japanese to show geographic and geologic information and information relating to industrial and agricultural production for an economic survey of Japan during the U.S. occupation.

319.6. Alaska is represented by: a map showing the proposed Alaska Highway (1940); a map showing military bases and airfields in Alaska (1941); a chart of the St. Paul Harbor area on Kodiak Island annotated to show a proposed naval air station (1940); operations maps relating to the reoccupation of Kiska Island and Attu Island (1943); and a 17-sheet map and a perspective sketch relating to Attu Island (1943).

319.7. Other records include two maps of Reykjavik, Iceland, and vicinity (1941); a map of Bermuda showing defenses and the proposed site for a Navy base (1944);

numerous maps showing the administrative boundaries of U.S. Army commands and theaters of operations (1942-49) and overseas deployment of troops (1942-44); and organization charts relating to the U.S. Army and Navy in the Pacific theater and to the War Department Historical Program (1944).

RG 324 Records of the Board on Geographic Names

324.1. Maps & Charts: Among the records are about 130 manuscript and published maps and a few overlays prepared or acquired by the Board primarily to show approved place names in regions of the United States and other areas worldwide (1943-47). Included are maps and overlays showing geographic information relating to Burma; maps showing administrative divisions in Formosa and Norway; maps showing petroleum facilities in the Middle East and in the Caribbean, Peru, and Ecuador; a map showing oil and coal fields in Japan; and maps showing mineral deposits in New Caledonia and Australia. A representative sample of "name overlay" maps used to correct place names on Army Air Force loran charts and on AMS sheets of the eastern Asia map is among the holdings as well (1944-45).

324.2. Also included are a few gazetteers from the World War II period (1942-45); an incomplete set of mimeographed rules and directions for the treatment of geographic names in foreign countries (mostly those in Asia, the Southwest Pacific, and Europe, 1943-45); published guides to geographical names in the Japanese Empire, Korea, and China (1944-45); decision lists issued periodically by the Board (1943-45); mimeographed lists of place names in foreign countries and regions and in the United States (1945); card files of place-name decisions citing authorities; an incomplete set of case briefs consisting of notes and correspondence relating to place-name decisions; and an incomplete set of the Department of the Interior information service bulletin, "War Names in the News," which gives the spellings and pronunciations of place names in the military theaters (1943-44). The correspondence files of Board Director Meredith F. Burrill include drafts of verbatim minutes of Board meetings (from January 1945 to the postwar period); correspondence relating to the Subcommittee on Foreign Names and to the Antarctica Special Committee (from 1944); files on the 1943 reorganization of the Board and an outline of its duties (1944); a file on methods and procedures relating to standard geographical name cards (1942-43); correspondence relating to commemorative names policy; correspondence regarding the Board's postwar projects planning (1944-46); and records relating to a 1945 trip to Alaska by the House Committee on Territories, including a tentative itinerary and route maps.

RG 331 Records of the Allied Operational and Occupation Headquarters, World War II

331.1. Maps & Charts: Included are records of the Allied headquarters in the European (SHAEF), Mediterranean (AFHQ), and Southwest Pacific (SWPA) theaters

of war and of the occupational headquarters of Japan (SCAP). SHAEF records include maps, map overlays, and photomaps relating primarily to Allied operations in northern Europe, including the invasion of Normandy and the advance of the Allied armies across France and the Lowland countries into Germany (1944-45). Among these are numerous Order of Battle and situation maps that show the dispositions of Allied and German troops and the locations of battle lines in Europe on given days. Among the situation maps are a number relating specifically to the 12th Army Group, some with accompanying G-3 reports (June 1944-July 1945), and others pertaining to the U.S. 7th Army and the French 1st Army, both of the 6th Army Group (September 1944-May 1945). An incomplete set of 67 situation maps of European theater ground and air operations (January-April 1945) continues coverage of a similar map series filed among the records of the War Department General and Special Staffs (RG 165). A collection of 8- by 10-inch black and white photographs of SHAEF "War Room Battle Maps" provide a nearly complete representation of the daily military situations in the European theater from June 1944 to April 1945, including some maps relating specifically to the Allied advance from the Normandy beaches and others pertaining to the advance from southern France following the Anvil landings. Other "War Room Battle Map" photographs show military situations in Italy (April 1944-April 1945) and in the Burma, China, and Pacific areas (April-May 1945). Weekly changes in the front lines on the Russian front from January 20 to February 17, 1945, are represented on a set of five maps. Photographs of "Transportation" charts indicate the tonnage of supplies and number of reinforcements delivered to western European ports from December 1944 to May 1945.

331.2. Records pertaining to the invasion of Normandy include Operation Neptune maps of the assault beaches, such as a water-level silhouette view of Omaha Beach showing defenses as of May 14, 1944; several maps prepared to accompany G-2 estimates of the enemy situation in the assault area (May 1, 1944); a map showing German artillery and antiaircraft defenses near Isigny; a chart showing the Allied "Fire Support Area" off the Normandy beaches; traffic circulation plans of the U.S. 1st Army on Omaha and Utah Beaches and on the Cotentin Peninsula; and a map of "Fighter Patrol Areas in Assault Area and Over Main Shipping Route" (February 1945). Other maps of France include plans of French towns, some of which show defenses; maps of the Maginot Line fortifications; and a map illustrating French Resistance activity in the Haute-Loire region from 1940 to 1943.

331.3. Also among the SHAEF records are defense overprints of areas in France, Belgium, the Netherlands, Denmark, and Germany; "Going" maps of areas in France, the Netherlands, and western Germany; maps showing locations of Allied depots for quartermaster, ordnance, signal, engineer, and medical supplies in France, Belgium, and Luxembourg; maps showing the status of Allied airfield construction in France, the Lowland countries, and Germany (March-April 1945); diagrams of Signal Division cross-channel and continental communications systems from Operation Overlord to Operation Eclipse; and maps of the Scandinavian countries showing German military dispositions and movements, the strength and distribution

of the Norwegian Resistance forces (April 1945), and road and rail communications from Sweden.

331.4. Military operations in the Lowland countries are represented by maps and overlays pertaining to Operation Market-Garden (including maps showing the activities of the U.S. 101st Airborne Division in capturing and holding bridges at or near Veghel in the Netherlands), as well as by statistical returns of the seaborne, glider, and parachute echelons of the operation (September 17-27, 1944). Also among the records is a map showing the German counteroffensive plans of December 16, 1944 (the Battle of the Bulge); overlays showing minefields in Luxembourg; maps relating to Operations Blackcock, Veritable, and Grenade to gain Allied control of the area between the Meuse (Maas) River and the Rhine River near the eastern border of the Netherlands (February-March 1945); and a map showing plans to establish Allied control of that portion of the Netherlands north of Arnheim and the Rhine River as far east as the Ijssel River. Operation Crossbow is represented by a set of 29 maps that accompanied weekly summaries on German rocket-launching sites in Belgium from December 1944 to April 1945 and by a map of the Nijverdal and Hellendoorn area in the Netherlands overprinted to show a "typical lay-out of a rocket-firing area."

331.5. Numerous records relate to the Allied plans to cross the Rhine. Among these are maps showing "Assault Areas" and bridge sites on the Rhine; bridge site plans; maps and overlays relating to the Rhine crossings north of the Ruhr (Operations Plunder and Varsity); map studies of Rhine River crossings before the U.S. 3rd and 7th Armies; maps of the French 1st Army defensive lines west of the Rhine; and antiaircraft artillery defenses near Remagen Bridge (March 15, 1945). In addition, there are maps showing German airfield groups near the Rhine (November 1944) and areas in Germany bombarded in preparation for the Rhine River assaults (January-February 1945). Several sets of maps show main trends of German movements behind the lines, the main concentrations of air attacks on German railways, the state of damage to German rail centers, and interference with German communications, all gleaned from aerial reconnaissance (December 1944-April 1945).

331.6. Other records relating to Germany include photomaps; road overprints; a map showing the locations and movement of prisoner-of-war camps (February 1945); a map showing "Local Resources," including government offices, electric power stations, mines, and factories (April 1945); and a map showing bomb damage to Hamburg (May 1945). Map studies include a general study of the Neckar River basin and terrain studies of the western approaches to Munich and of the German National Redoubt area (the eastern Alps of Austria and southern Germany). Other maps relating to the National Redoubt area contain information on roads, bridges, snow obstructions, defensive preparations, military camps, supply installations, and operational objectives. A number of maps among the holdings relate to German boundaries before and during the military occupation. These include maps of German economic and administrative districts, Nazi Party boundaries, and Allied

zones and sectors of occupation and "Civil Censorship" districts under Operation Eclipse.

331.7. Among the AFHQ records are maps, charts, and photomaps relating to Allied operations in North Africa (Algeria, Tunisia, Libya, and Egypt) and Europe (Sicily, Italy, France, Austria, Greece, Yugoslavia, and Romania) from 1942 to 1945. Many of the maps are overprinted to show defenses or other information of military utility, while others are annotated to show military operations. Among the records are: 12 maps illustrating the progress of the North African campaigns in Libya and Egypt from December 1940 to November 1942; seven maps relating to Operation Torch landings near Oran and Algiers in November 1942; 21 "Beach Diagrams" of landing beaches in Sicily (1943); a number of war room maps annotated to show military operations in Sicily and Italy; seven photomaps, dated July 26, 1943, that show landing beaches and defenses on the Gulf of Salerno in preparation for Operation Avalanche; a map annotated to show the German attack of February 29, 1944, on the Anzio beachhead; seven Polish maps overprinted in English to illustrate the role of the Polish II Corps in the Battle of Monte Cassino in May 1944; photomaps of Bologna that show perimeter defenses (1944); seven "Strafing Charts" (photomaps) of airfields in northern Italy (1944); a map annotated to show dropping zones for paratroops in the Comacchio area (1945); six map sheets showing the Adige defense line in northern Italy (February 1945); 17 "Going" maps showing the routes through Brenner Pass and Resia Pass from Italy to Austria (1944); 26 "Going" maps of eastern France (August 1944); 12 perspective sketches and water-level silhouettes of landing beaches in southern France (July 1944); 34 photomaps of landing beach areas in southern France in preparation for the Anvil landings (1944); and 28 map sheets covering the island of Crete, overprinted with aerial photographic intelligence (1943).

331.8. SWPA records include a large number of maps relating to areas and island groups of the Southwest Pacific where U.S. Army forces served from about 1939 to 1945, such as Australia, the Bismarck Archipelago, Borneo, New Guinea, the Philippines, and the Solomon Islands. Included are maps and photomaps showing defenses of Corregidor Island; maps relating to the U.S. invasion of Leyte Island in October 1944; maps prepared for a "Survey of the Philippines," including some that show landing beaches and harbor and anti-aircraft defenses at Manila and Subic Bay (1939-42); "Terrain Studies" of Luzon, which include ground-level and aerial photographs as well as maps; terrain estimates and maps of the Kai, Tanimbar, and Aroe Islands of the Moluccas; a map that shows eastern New Guinea coastal conditions and landing beaches; four situation maps of the Buna area in Papua (January-June 1943); numerous sketch maps and charts of areas in the Netherlands East Indies, including many compiled by the Netherlands Forces Intelligence Service (NEFIS); a map showing the locations of Japanese air and naval bases in the Southwest Pacific (June 1943); and three printed post-operations maps showing Allied landings and sites and dates of other military engagements in the southwest Pacific (1942-45). Also among the records are a number of charts and maps prepared for the use of airplane pilots, including 14 maps of military airfields in the

Philippines; airfield identification sketches of fields on Formosa and Hainan Island; 42 "Air Support Charts" of Panay, Negros, and Cebu Islands in the Philippines (December 1944); and "Evasion Maps" for airmen shot down over the southern Philippine Islands, southeast China, and Korea.

331.9. Other SWPA records include copies of the published SWPA multivolume history, Reports of General MacArthur (1966), which covers Japanese and Allied operations in the Southwest Pacific and the military occupation of Japan. Maps, overlays, and photographic negatives used in preparation of the map plates for these volumes are among the records as well. Also included are two sets (including one complete bound set) of the USAFFE publication "Southwest Pacific Newsmap" (January 1944-April 1945), which documented the military activities of the Southwest Pacific and other military theaters on a weekly basis through the use of public maps, photographs, and descriptive text. This publication was modeled on the Army publication "Newsmap," copies of which are in the records of the Headquarters Army Service Forces (RG 160).

331.10. SCAP records among the holdings include the publication *Japanese Natural Resources: A Comprehensive Survey* (1949) and nine enclosure maps that illustrate such subjects as Japan's surface features, land use, geology, soil and forest types, population distribution, types of irrigation, and locations of electric power-generating plants. Also included is a March 1946 map showing SCAP administrative districts in Japan and southern Korea.

331.11. Aerial Photography: Aerial photographic prints and mosaics are filed among the SHAEF and SWPA cartographic records. These include about 80 aerial mosaics and beach profiles of landing beaches in Belgium and northern France (1942-44); 16 oblique aerial photographs showing landing craft obstacles at low tide along the Normandy beaches (May 1944); 11 vertical aerial photographs and mosaics of towns and areas between Luxembourg and the Rhine River in Germany; 32 vertical aerial photographs of Berlin (April 1945); aerial photographs that document a bomber strike on a Japanese seaplane base at Caldera Point near Zamboanga in the Philippines (February-March 1945); a three-sheet aerial mosaic overprinted to show supply and personnel areas along the Davao River on Mindanao (March 1945); 10 overprinted vertical and oblique aerial photographs of airfields on and harbors in Formosa, Honshu, and the Batan Islands of the Philippines (November 1944-March 1945); and a four-sheet aerial mosaic and oblique aerial photographs of the area around Madang and Alexishafen in New Guinea (February-August 1943). Among the SCAP records is a roll of about 200 negative aerial photographic film images prepared in 1948 of the route of the Bataan "death march" in the Philippines.

RG 332 Records of the United States Theaters of War, World War II

332.1. Maps & Charts: Among the records are maps relating to the U.S. Army's involvement in the European (ETOUSA), the China-Burma-India (CBI), and the

Africa-Middle East theaters of operations. Included in the more than 400 ETOUSA items are 20 "Chart-Maps" of the Normandy beaches (April-May 1944); seven "Beach Exit" plans for the Omaha and Utah Beaches, consisting of maps, perspective views, and profiles (April 1944); map overlays showing underwater obstacles along the beaches (May 1944); and "Tidal Curves" (May 23-June 19, 1944) and "Profile Sheets" relating to the beaches. Four "Beach Plans" of landing beaches on Belle-Isle (June 12, 1944) and a "Chart-Map" of one of these beaches (September 1944), backed by a defense overprint map of the island, are among the holdings as well. A map entitled "Suggested Routes for Overland Movement of Landing Craft" (June 1944) probably relates to the projected assault on Belle-Isle off the Brittany coast. Other transportation maps of France include a road map of the Isigny, Bayeaux, and St. Lo area (Normandy); a map showing "Road Features Affecting Traffic Flow, NW France" (Normandy); a map showing railroad facilities from St. Nazaire to Rennes (Brittany); an 18-sheet map showing railroads and the main roads of France; seven road overprint map sheets of eastern France (October 1944); and several maps and overlays showing railroads, roads, canals, and rivers of northeastern France, the Alsace-Lorraine region, and the Lowland countries. Other map overlays reveal such information as density of population, electrical distribution, areas restricting cross-country movement, and locations of enemy airfields in eastern France (April 1944).

332.2. The defenses of the Maginot Line are represented by numerous photomaps, maps, and plans (1944-45). In addition, a number of map overlays, including some prepared for G-2 special reports (July-December 1943), show enemy defenses, minefields, airfields, and signal communications facilities in northern France, and a set of maps illustrates the defenses and military situations encountered in the vicinity of Brest (Brittany) September 2-18, 1944. Other records include nine map sheets relating to a bridge and road study of the area of the crossings of the Moselle, Saar, and Prims Rivers along the German border between Moselle, France, and Luxembourg (1944); a map showing load classification of bridges in Paris (1944); and city plans of a few villages and cities in Brittany and northeast France as well as of Spa, Belgium (1943-1945). A city plan of Maastricht in the Netherlands is overprinted to show plans for the defense of the Allied headquarters there in November 1944.

332.3. Among the ETOUSA records relating to Germany are defense overprint maps, photomaps, and map overlays showing defenses. These include a 20-sheet set of maps of the area between Aachen and Cologne and maps and photomaps of the Zweibrucken area (December 1944). Key river-crossing sites are represented by two maps and a map overlay of the Roer River crossing at Duren (December 1944-February 1945); two aerial mosaics of the Saar and Moselle Rivers near the Luxembourg border; a bridge and road study of the area west of Zweibrucken (November-December 1944); a "Bridging Study" of the Lippe and Ruhr Valleys (March 1945); 18 map sheets showing assembly areas and possible Rhine River crossings and through roads between Cologne and Koblenz (1944); and cross sections of the Xanten and Rees bridge sites on the Rhine north of the Ruhr (January 1945).

332.4. Other maps relating to transportation routes in Germany include an incomplete set of 20 road map sheets of the country; road overprint maps; a map of the autobahn from Aachen to Cologne (November 1944); and a map showing "civil evacuation routes," rest and accommodation areas, and troop movement routes in the same area (1944). Textual notes, overprinted maps, and map overlays relating to the suitability for cross-country movement (trafficability) in western Germany (1944-45) are among the holdings as well. Other records relating to Germany include a map showing the locations of German repair and spare-parts depots serving the Western Front (December 11, 1944), and an 11-sheet map showing German town districts and Allied Army Group boundaries (May 1945).

332.5. Also among the ETOUSA holdings are a photomap of the Slapton Sands area near Dartmouth, England; a map of Great Britain showing the boundaries of U.S. Army Engineer and British Army commands, as well as Air Ministry Works areas (July 1942); a map showing Allied depot installations in northern France, Belgium, and Luxembourg (February 1945); and map overlays of western Czechoslovakia showing such information as natural corridors, river widths, and topographic restrictions to cross country movement. Several ETOUSA planning graphs reveal 1944 plans concerning hospital bed status, casualty evacuation routes to the United States, and projected division and personnel buildup on the Continent from D-Day to D+270.

332.6. Approximately 80 CBI records include maps relating to supply and transportation routes in this military theater. Among them are maps showing the Burma Road and the several supply routes extending from Calcutta to Ledo, India; an atlas of road and railway maps of the state of Assam, India (1944); a map showing transportation routes in western China; and an annotated map showing "train movement thru Russia" to supply the Chinese armies in central China (November 1944-January 1945). Maps relating to air facilities in the theater include a map pertaining to Operation Matterhorn that shows airfields of the Far East and Southwest Pacific (May 1944); a map indicating the suitability of part of Indochina and Thailand for the rapid construction of airfields (1945); a map of northeast China and southern Manchuria showing existing airfields and areas suitable for airfield construction; and an "Evasion Map" for pilots shot down in northern Korea and southeast Manchuria.

332.7. Also among the CBI holdings are a number of operational maps and maps indicating military situations within the area. These include two maps showing the military situations in Burma and Thailand on January 20 and March 20, 1942; a map showing the scheme of withdrawal and pursuit in Burma (May 1942); a large four-sheet map of the Northern Combat Area Command in Burma showing Allied operations from October 1943 to April 1945; an oversize map of part of Burma showing the military situation as of January 26, 1944; a map showing Japanese dispositions in Burma and Assam up to September 1944; a 13-sheet Communist map of China (in Chinese) showing the military situation as of July 1944; and an annotated map showing the movement of Chinese occupational forces to northeast

China, Manchuria, and Formosa at the close of the war. In addition, there is a set of English translations of 16 Japanese intelligence maps that show the dispositions and strengths of Soviet Army and Air Force units in Asia from the Mongolian border to the Pacific Ocean as of May 1, 1944, including one map relating to the northern air route between the United States and the U.S.S.R. via the Bering Strait.

332.8. Other CBI records include a map showing civil administrative boundaries in Burma (November 1945); a four-sheet defense overprint map of the Nicobar Islands (July 1945); a sketch map of a bridge and adjacent prisoner-of-war camp in Thailand, drawn by an escaped Australian prisoner (January 1945); two maps showing projected Allied plans to drive the Japanese out of northern Sumatra and Malaya from May to September 1945; an English translation of a Japanese General Staff study on the military geography of Yunnan Province in southwest China (1943); and a set of ETOUSA planning graphs of 1944 showing plans regarding hospital bed status, evacuation of casualties from China to India, the flow of supplies to China, and the capacity of the lines of communication from India to China.

332.9. The records of the Africa-Middle East theater consist of eight maps relating to the Persian Gulf Command. Among these are a map prepared to accompany a "Survey of Iran" that shows troop dispositions in that country; a plan of a U.S. military base at Khorramshahr, Iran; and three highway construction maps showing the locations of road camps in Iran from Khorramshahr to Kazvin (1943-44).

RG 336 Records of the Office of the Chief of Transportation (Army)

336.1. Engineering Plans: Included are about 6,000 blueprint plans of U.S. Army transport ships and some hospital ships, such as the Thistle. Most of the plans were prepared from about 1917 to 1944. Although all of the ships were designed as Army transports, some, such as the J. Franklin Bell (AP-34), were assigned to the U.S. Navy before World War II and remained in naval service throughout the war. Many of the plans are of details and machinery, but a number of general plans, deck plans, capacity plans, inboard and outboard profiles, and section plans are included.

RG 337 Records of the Headquarters, Army Ground Forces

337.1. Maps & Charts: The records consist of Army Ground Forces organization charts and maps of the United States showing the boundaries of tactical units and locations of replacement training centers, schools, and boards (1943-47).

RG 338 Records of United States Army Commands, 1942-

338.1. Maps & Charts: Among the records are maps acquired or prepared by the U.S. occupation forces in Europe (EUCOM) and Japan (AFPAC), as well as other

World War II and post-World War II Army commands. Maps that date from or relate to the war include: a bound set of 58 maps pertaining to the German invasion of France and the Lowland countries ("Der Feldzug in Frankreich") showing locations and movements of troops from September 1939 to June 1940; a map of the 8th Army Service Command in the south-central United States showing locations of military installations (1942); a map and profile of a section of the Alcan Highway along the Toad River in British Columbia (1942); and several maps printed at Fort Knox, Kentucky, in 1948 and 1949 to show the movements of Allied Armored Divisions in Europe and North Africa during the war. Maps of the occupied countries immediately following the war include a map showing administrative boundaries in southwestern Germany (1946); a EUCOM road map of the U.S. occupation zone in Germany (1947); and a number of maps of Japan acquired by AFPAC (1945-46), including a city plan of Tokyo.

338.2. Architectural Drawings: The records include about 1,800 architectural plans of Arlington Hall Station in Arlington, Virginia, which were prepared between 1942 and 1986 and maintained by the Intelligence and Security Command (INSCOM). Those dating from the period of World War II include elevations, floor plans, and detail plans of numerous buildings on the site.

RG 373 Records of the Defense Intelligence Agency

373.1. Aerial Photography: The Defense Intelligence Agency (DIA) has maintained most of the surviving aerial photographic records produced or acquired by U.S. military agencies of the World War II period. Among the millions of images now held by the National Archives, the majority represent vertical coverage, although oblique views are present as well. Both foreign and domestic areas are covered. Domestic coverage dates from about 1940 and is concentrated on selected areas, such as military installations, cities, and coastal areas in the United States. Virtually all domestic coverage is on negative film and varies in scale from about 1:5,000 to 1:90,000. Among the domestic images are a number that document the construction of the Pentagon in Arlington, Virginia (1941-43).

373.2. U.S.- and Allied-flown foreign reconnaissance missions during World War II are documented on negative film for areas in Europe, the Far East, and the Pacific. European countries covered include France, the Lowland countries, Germany, Poland, and Italy. Notable among the U.S. aerial photographs of Europe are images of the Auschwitz and Birkenau concentration camps in Poland (1944-45); the invasion of Normandy (June 1944); and the Peenemunde rocket sites in Germany. Among the countries and islands for which coverage exists in the Far East and the Pacific are China; Japan; Indochina; Burma; the Philippine Islands; Hawaii; the Aleutian Islands; Wake Island; Midway Island; Guadalcanal (Solomon Islands); Tarawa (Gilbert Islands); Eniwetok and Kwajalein (Marshall Islands); Truk and Yap (Caroline Islands); Saipan, Tinian, and Guam (Mariana Islands); Iwo Jima

(Bonin Islands); and Okinawa (Ryukyu Islands). Many U.S.-flown aerial records of the period remain in the custody of DIA.

373.3. About 1,200,000 prints of German-flown aerial photography (GX prints) cover much of Europe, including Great Britain and the U.S.S.R. to the Ural Mountains, as well as areas in North Africa and the Middle East (1940-44). Coverage is especially good for areas in eastern Europe, including Poland and Czechoslovakia and the Russian republics of the Ukraine, Belorussia, Lithuania, and Latvia. As in the case of U.S.-flown photography, selected areas, such as cities, military installations, strategic targets, and transportation routes, predominate. Many of the images reveal bomb damage, and most are of vertical coverage of widely varying scales. Included are prints identified by Allied aerial photographic interpretation units under Operations Dick Tracy, Patron, and Monthly.

373.4. Also among the holdings are about 37,000 negative images of Japanese-flown aerial film (JX) covering parts of the Far East. These include images of areas in China (including Formosa), the U.S.S.R. (including Sakhalin Island), Indochina, Burma, the Netherlands East Indies, New Guinea, the Bismarck Archipelago (including New Britain and New Ireland), and the Philippine Islands (1939-45).

373.5. A collection of several hundred photographic negatives of aerial mosaics, oblique aerial photographs, ground-level photographs, and a few maps and architectural sketches cover a wide range of sites in Europe, North Africa, the Far East, and the Pacific (1939-45). Many of these negative images appear to have been prepared to illustrate publications, while a few relate to photographic images found among the GX holdings or among the MIPI/NIPI records of the Naval Intelligence Command (RG 289). Many provide views of bomb damage to German cities, such as Aachen, Cologne, Duren, Wurzburg, and Berlin, and of specific target sites in Germany, such as the synthetic oil plants at Gelsenkirchen and Magdeburg, the Messerschmitt plants at Gotha and Augsburg, and the railroad yards at Euskirchen and Ulm, as well as of the oil refineries at Ploesti, Romania. Other aerial images relate to European ports, such as Bergen, Norway; Le Havre and Dunkirk in France; Hamburg, Germany; and Rhodes in the Dodecanese Islands. Many of these are overprinted to show harbor facilities or defenses. Several mosaics cover coastal areas in France near Calais and Dunkirk (1944). The Omaha Beach area in Normandy is covered by a mosaic dated June 15, 1944, and two mosaics reveal storm damage sustained by Mulberry harbor equipment off the Normandy coast on June 22, 1944. A number of ground and aerial photographs pertain to Hitler's Berchtesgaden retreat, including some that show air raid damage sustained April 25, 1945. Other photographs relate to the construction of underground factories in Germany, Austria, and Hungary, and to particular German defense facilities or devices, such as ground-control interception stations, flak and searchlight positions, railroad flak cars, and smoke generators. The use of the autobahn as a landing strip for jet aircraft is also documented by negative photographic images. Coverage of North Africa includes overprinted aerial negatives showing harbor facilities at Benghazi, Libya, and the Mareth Line of defenses in Tunisia.

373.6. Among the photographic negative images relating to the Far East are mosaics and oblique aerial photographs of Hiroshima and Nagasaki before and after the atomic bomb attacks of August 1945. Also included are aerial and ground photographs of targets, bomb attacks, and conventional bomb damage to other Japanese cities, including Tokyo, and to specific targets in Japan, such as the Mitsubishi Aircraft Engine Works in Nagoya and the Kure Naval Arsenal. Negative images of China include mosaics of Peiping (Peking), overprinted to show targets (1944), and water-level photographs of the Shanghai waterfront. Other aerial images relate to many of the Pacific islands that figured prominently in the course of the war in this theater, including Wake Island, Midway Island, Luzon and Corregidor (Philippine Islands), New Guinea, the Bismarck Archipelago, Guadalcanal (Solomon Islands), Tarawa (Gilbert Islands), Truk (Caroline Islands), and Saipan, Tinian, and Guam (Mariana Islands). Many of these images are annotated to show defenses and military installations, while others document bombing attacks in progress.

RG 391 Records of United States Regular Army Mobile Units, 1821-1942

391.1. Maps & Charts: Included are a 1942 map of A.P. Hill Military Reservation in Virginia, a 1941 map of Fort Oglethorpe and vicinity in Georgia, and other pre-1941 maps of Army bases in the United States that remained in use during World War II.

RG 395 Records of United States Army Overseas Operations and Commands, 1898-1942

395.1. Maps & Charts: Among the records are a three-sheet tactical map of Corregidor Island in the Philippines showing defenses, buildings, roads, and topography (1936); a map of Indochina showing the locations of troops (1939); a map of China showing administrative divisions (1932); road maps of St. Thomas in the Virgin Islands and the island of Antigua (1942-43); and a few military surveys of areas in Panama (1926-40).

RG 407 Records of the Adjutant General's Office, 1917-

407.1. Maps & Charts: Included are maps, overlays, city plans, photomaps, and pencil sketches relating to the European, Mediterranean, and Pacific theaters of war that were prepared by Allied armies, corps, divisions, and subordinate Engineer components and collected by the Adjutant General's Office.

407.2. Among the cartographic records pertaining to Europe are a number relating to the invasion of Normandy, including maps showing terrain and inundated areas near Utah Beach; city plans and traffic circulation plans for the Cotentin Peninsula and the vicinity of Omaha Beach; a few maps showing bridge, road, and mine field

information in the St. Lo and Coutances area; defense overprints of the Cotentin Peninsula; a map of Point du Hoc near Omaha Beach showing defenses; and "Bogus" maps of the Normandy area that feature false place names (March-August 1944). A detail study of German defenses and camouflage utilized north of St. Lo consists of text, photographs (including overprinted aerial photographs), maps, and color sketches. Other records relating to France include a city plan of Brest showing defenses; a map showing defenses in the vicinity of Metz; and city plans and terrain and bridge study maps of the area east of Metz (1944). A number of maps, sketches, and plans relate to the Maginot Line fortifications, particularly in the area east of Metz and Nancy.

407.3. Other European theater records showing defenses include defense overprint maps, photomaps, and overlays, primarily of areas in Germany near its borders with France and the Lowland countries from about September 1944 to March 1945. Among these are photomaps showing German defenses northeast of Aachen; maps showing defenses along the Moselle River border with Luxembourg; maps and photomaps indicating defenses on the Roer River near Duren and Julich, Germany; maps showing areas that afforded dominating enemy positions between Duren and Cologne; maps revealing defenses along the Rhine River from Cologne to Koblenz; a map overprinted to show defenses in the vicinity of Zweibrucken, Germany; and maps and overlays indicating minefields and barrier plans in France, Belgium, and Germany (1944-45).

407.4. Maps illustrating military operations and situations in France, the Lowland countries, and Germany at different times from June 1944 to June 1945 are filed throughout the holdings. A number of these specifically relate to the Battle of the Bulge in December 1944, while others pertain to U.S. XII Corps operations from October 1944 to February 1945. A collection of maps and attached overlays illustrates the operations of the 35th Infantry Division in France, the Lowland countries, and Germany from July 1944 to May 1945, as part of the U.S. 3rd and 9th Armies.

407.5. Engineer activities in Europe are represented by maps showing such operations in the U.S. XII Corps sector during December 1944 and January 1945 and by a set of maps showing routes traveled and maintenance and construction duties performed by the 133rd Engineer Combat Battalion in Luxembourg, Germany, and Austria from January to July 1945. Other maps show areas of responsibility of Engineer units in France (August-September 1944) and pillboxes destroyed by Engineers in the U.S. VII Corps sector near Stolberg, Germany. Of particular interest are 12 printed copies of pencil sketches by Lieutenant Stookie Allen portraying the activities and accomplishments (primarily in bridge construction) of the 1106th Engineer Combat Group of the U.S. VII Corps from Normandy to the Rhine River (1944-45).

407.6. Numerous maps relate to terrain, road, and bridge studies in the European theater. These include a terrain study of the area between Nijmegen, Netherlands,

and Cologne, Germany (December 1944); an eight-sheet terrain study of the area between Metz, France, and Mainz, Germany (1944); seven sheets of a tactical study of the terrain covering much of Germany from the Meuse (Maas) River to Berlin (January-April 1945); road maps of France; emergency road maps of southern Germany (April 1945); a road condition map of Germany east of the Rhine (June 1945); terrain and bridge studies of the Frankfurt and Mannheim area in Germany (November 1944) and of northeast Luxembourg (January 1945); and a road and bridge study of Belgium from Bastogne to St. Vith (1944). Traffic circulation plans include road network maps of a portion of Belgium and Germany showing the status of roads and bridges from September 1944 to April 1945; terrain and communication network studies of several areas in northern Germany from Emmerich on the Netherlands border to Magdeburg on the Elbe River (April 1945); the U.S. VII Corps road network in the vicinity of Aachen and Duren (1945); a traffic circulation plan and projected U.S. XIX Corps road network between Aachen and Dusseldorf (February 1945); and a map showing through routes in U.S. Army occupation areas in Germany from Aachen to Dresden and Munich (May 1945). Among the records relating to rivers are crossing studies (including bridge profiles) of the Roer River near Duren, of the Erft River between Duren and Cologne, and of the Rhine River between Wesel and Duisburg (1944-45); bridging studies of the areas north of the Lippe River (March 1945) and west of the Rhine River near Bonn (1944); and a map showing demolished bridges in Belgium and Germany (March 1945).

407.7. Other records of the European theater include a map showing "refugee control points" in France, Belgium, and Luxembourg (1944); a map showing Allied ordnance installations in France, Belgium, and Germany from August to December 1944; a plan of a military base at Mourmelon-le-Grand, France; map overprints relating to a study of dams on the Roer River and its tributaries (1944); and several maps showing political and administrative boundaries in areas of Germany (1944-45).

407.8. Although most of the records of the Mediterranean theater relate to Italy, some pertain to North Africa, Sicily, and southern France. Among these are maps of Tunisia annotated to show military operations at Kasserine Pass and Station de Sened (January-February 1943); a map showing sections of the road north and west of Mount Etna in Sicily that are commanded by observation points on the mountain (July 1943); and a road map of Sicily captured at the Italian 6th Army headquarters during the campaign (1943). Maps relating to the Anvil landings in southern France include operations maps; Order of Battle maps; a map showing convoy and aircraft lanes between Corsica and the French coast; and road overprint maps of southern France (1944).

407.9. Records of military operations in Italy include an operations map relating to the Anzio landings (Operation Shingle) of January 1944; operations maps showing troop movements and objectives of the U.S. II Corps and the French Expeditionary Corps during the battles to break through the Gustav Line before Monte Cassino (1944); tactical maps annotated to show the activities of the 91st Infantry Division

from Anzio to Treviso (June 1944-May 1945); and maps relating to the planning and execution of the Lake Comacchio operations and the Po River crossings (1945). Overprinted and annotated maps, photomaps, and overlays show enemy defenses along the Arno and Gothic Lines and in the vicinity of Futa Pass, Bologna, the Po River, and northeast Italy (1944-45). Other records relating to Italy include beach overlays of part of the Adriatic coast; road overprint maps of the area south and west of Bologna (1944); a map with attached overlay of the Lake Comacchio area highlighting roads, bridges, and geographic information of military utility (1945); and maps showing Engineer construction and repair activities in the same area (April 1945).

407.10. The records relating to the war in the Pacific include operations maps of invasions at Saipan in the Mariana Islands (June-July 1944); Angaur Island of the Palau Islands in the Caroline Islands group (August 1944); and Lingayen Gulf on Luzon in the Philippine Islands (January 1945). Also among the holdings are a map showing the locations and strengths of guerrilla forces in southeastern Luzon; a road map of Okinawa (May 1945); a copy of a captured Japanese map of Okinawa (April 1945); and "Hasty Terrain" maps and photomaps of Empress Augusta Bay on Bougainville Island in the Solomon Islands (1944). Other records include a map showing the greatest extent of the Japanese Empire in the Pacific (August 1942); a 10-sheet map showing electrical power areas of Japan (1945); and a perspective view of the Konan Nitrogen Fertilizer Plant and vicinity in Korea.

407.11. Printed post-operations maps show the routes followed by the U.S. VII Corps and by the U.S. 66th and 71st Infantry regiments from England to Germany and Austria (1944-45), and by the U.S. 7th Division in the Pacific from San Francisco to Korea (1943-45). Another map shows operations of the U.S. 6th and 8th Armies in the Philippines from October 1944 to July 1945. Maps and overlays with printer's notes used in the preparation of a U.S. 5th Army history of the Italian campaign (August 1944-May 1945) are also among the holdings.

407.12. In addition, there are maps showing U.S. Army administrative boundaries in the United States and theaters of war worldwide (1941-47); sketch maps showing possible landing- field sites in Greenland (1941); a number of photographic negatives of operations maps relating to the Battle of Kursk (July 1943) and other military actions on the Russian front from December 1941 to July 1944; and a Russian transliteration table.

407.13. Aerial Photographs: Aerial photographs and mosaics relating to military operations in the European and Mediterranean theaters include six aerial mosaics overprinted to show the Siegfried Line north of Aachen, Germany (September 1944); 18 aerial photographic enlargements overprinted to show defenses in the vicinity of Saarbrucken and Zweibrucken, Germany (March 1945); four aerial mosaics overprinted to show defenses and beaches on islands off the southern coast of France (June 1944); an aerial mosaic of part of the Gulf of Salerno in Italy, prepared for Operation Avalanche (July 1943); oblique aerial mosaics of the Italian coastline near

La Spezia and of the mountains southeast of Bologna along Santerno River (1944); and aerial photographs annotated to show bridge sites in the Po River Valley of Italy.

RG 457 Records of the National Security Agency/Central Security Service

457.1. Maps & Charts: The records consist of about 3,600 outline charts annotated to show submarine activities and antisubmarine precautions in the Atlantic, Pacific, and Indian Oceans from 1941 to 1945. Many of the charts give daily information on the positions of submarines and surface vessels, while others are weekly, monthly, or annual summary charts. Included are charts showing daily enemy submarine positions in the Atlantic and Indian Oceans (1941-45); daily U.S. submarine positions in the Pacific (September 1944); positions of Japanese merchant ships in the Pacific (September 1943-March 1945); enemy submarine sightings, attacks, and sinkings, and the positions of Allied merchant ships and U.S. military vessels in the North Atlantic (1941-42, 1944, and May 1945); positions of enemy submarine sightings, attacks, and sinkings in the Pacific and Indian Oceans (1941-45); attacks on U.S. and Panamanian merchant vessels and U.S. naval vessels in the Atlantic (May-October 1941); merchant ship sinkings in the Atlantic (1942) and worldwide (1942-45); positions of British convoy support groups near the British Isles (November 1944-May 1945); the cruise of the German submarine U-188 from France to Malaya and back (June 1943-June 1944); and an Allied blockade runner lane in the Atlantic (1942-44). In addition, there are two editions of an atlas of Japanese place names relating to countries and islands in the Pacific and Indian Oceans (October and December 1943).

DONATED MATERIALS

DM.1. Maps & Charts: A number of maps and other items collected by veterans of World War II during their service have been donated to the National Archives. Among these are the personal records of Colonel Alan P. Sullivan. His maps, overlays, and photomaps relate to the advance of the Allied forces (particularly the XII Corps of the U.S. 3rd Army) from Normandy to the Rhine River (1944-45). Most of these records are tactical maps showing topography and roads in France, the Lowland countries, and Germany. Some are overprinted to show defenses, while others are annotated to indicate troop positions and movements. Included are city plans of Mainz, Germany, and map overlays showing military unit boundaries and objectives in February and March 1945.

DM.2. Another sizable donation of cartographic records is that of Colonel Kelvin Hunter. This collection includes maps annotated to show the locations of the 95th Infantry Division of the U.S. 3rd Army on specific days from October 14, 1944 (near Verdun, France) to May 7, 1945 (at Warendorf, Germany); maps of Army training bases in the United States, including some annotated to show training exercises and maneuvers (1930-40); a number of German topographic and road maps and air navigation charts of central and eastern Europe; a collection of notes, gazetteers, and glossaries relating to GSGS maps of Austria, Czechoslovakia, Denmark, Germany, and Poland (1944); and printed post-operations maps showing the routes followed by the U.S. XIX Corps in Europe, the 95th Infantry Division in training and action in the United States and Europe, and the 7th Infantry Division in the Pacific during World War II. Also included are copies of two illustrated publications relating to the training and war service of the 95th Division; three issues of "The Journal," a newspaper produced by the 95th Division in Germany (April-May 1945); six issues *Stars and Stripes* (November 1944-June 1945); and copies of several U.S. newspapers relating to the 95th Division (1943) and the surrender of Japan (August 1945). A small map carrying case, apparently acquired by Colonel Hunter during the war, contains several German maps and two pocket devices for determining map scales, distances, and directions.

DM.3. Other gift items include published maps showing French Resistance activities in six regions of France (donated by M. Henri Michel), and maps used by Major J. J. Gussak while on duty with the American Graves Registration Service in India (donated by Mrs. Elizabeth Gussak). The latter include a map annotated to show locations of planes downed while flying the "Burma Hump" from India to China, and a road and railway map atlas of the state of Assam, India (1940).

LIST OF ABBREVIATIONS

AAF:	Army Air Forces
ACS:	Aeronautical Chart Service
AFHQ:	Allied Force Headquarters (Mediterranean)
AFPAC:	Army Forces in the Pacific
AMS:	Army Map Service of the U.S. Army Corps of Engineers
B.A.:	British Admiralty
CBI:	China-Burma-India theater of operations
C&GS:	Coast and Geodetic Survey
CICSOPAC:	Commander in Chief, South Pacific
CINCPAC:	Commander in Chief, U.S. Pacific Fleet
CINCPOA:	Commander in Chief, Pacific Ocean Areas
DIA:	Defense Intelligence Agency
DPC:	Defense Plant Corporation
DSC:	Defense Supplies Corporation
ERP:	Engineer Reproduction Plant
ETOUSA:	European Theater of Operations, U.S. Army
EUCOM:	U.S. European Command
FEA:	Foreign Economic Administration
G-2:	Military Intelligence Division, War Department General Staff
G-3:	Organization and Training Division, War Department General Staff
GSGS:	Geographical Section, General Staff (British)
H.M.S.:	His Majesty's Ship (British Navy)
H.O.:	Hydrographic Office (U.S. Navy)
ISIS:	Inter Service Information Series (British)
JANIS:	Joint Army-Navy Intelligence Study
JCS:	Joint Chiefs of Staff
JICPOA:	Joint Intelligence Center, Pacific Ocean Area
MID:	Military Intelligence Division, War Department General Staff
MIPI:	Military Intelligence Photographic Interpretation
MIS:	Military Intelligence Section of MID
NATOUSA:	North Africa Theater of Operations, U.S. Army
NEFIS:	Netherlands Forces Intelligence Service
NIPI:	Naval Intelligence Photographic Interpretation
OSRD:	Office of Scientific Research and Development
OSS:	Office of Strategic Services
RDC:	Rubber Development Corporation
SCAP:	Supreme Commander for the Allied Powers
SEAC:	Southeast Asia Command

SES:	Strategic Engineering Study
SHAEF:	Supreme Headquarters, Allied Expeditionary Force
SWPA:	Southwest Pacific Area
USAFCPBC:	U.S. Army Forces, Central Pacific Base Command
USAFFE:	U.S. Army Forces in the Far East
USAFICPA:	U.S. Army Forces in Central Pacific Area
USDA:	U.S. Department of Agriculture
USGS:	U.S. Geological Survey
U.S.S.:	United States Ship (U.S. Navy)
WAC:	World Aeronautical Chart
WDMC:	War Department Map Collection

GLOSSARY

Alcan Highway: Alaska-Canada highway, also known as the Alaska Highway.

Anaglyph: A stereoscopic photograph resulting from the printing or projection of two images in complementary colors and nearly in superposition. When viewed through special colored lenses, a three-dimensional image appears.

Annotated: A term indicating the addition of manuscript notes or markings to a printed map, chart, or aerial photograph.

Anvil: Code name for plan for invasion of southern France, August 1944.

Avalanche: Code name for invasion of Italy at Salerno, September 1943.

Barbarossa: Code name for German offensive against U.S.S.R., June 1941.

Blackcock: Code name for British XII Corps operation to clear enemy salient between the Muese (Maas) and Roer-Wurm Rivers in the Netherlands from Roermond southward.

Blacklist: Code name for plan for occupation of Japan and Korea following the collapse or surrender of the Japanese Government.

Bogus map: A map featuring spurious place names intended to mislead an enemy.

Campus: Code name for a proposed plan for the occupation of Japan following the collapse or surrender of the Japanese Government.

Canol: A project to tap the Norman Wells oil field in the valley of the Mackenzie River in Canada to supply petroleum to Alaska and the staging fields along the Alcan Highway.

Cartogram: A map that incorporates the statistical or quantitative characteristics of a graph or table into its geographic context, frequently by the use of different-size symbols or shading techniques.

Chart-Map: A cartographic rendition of a coastal area that includes elements of a hydrographic chart, such as soundings, as well as those of a topographic map. Such maps were used in the planning of amphibious landings at Normandy and elsewhere.

City plan: A large-scale map of a village, town, or city delineating streets and important buildings.

Cloth chart: A cartographic representation printed on a durable material, such as silk or rayon, and treated to withstand such destructive elements as weather, temperature, humidity, fungus, and mildew. These were issued as survival charts to airmen in danger of being shot down in enemy territory.

Crossbow: Code name for RAF operations against German V-weapons experimental bases.

Crossroads: Code name for operations to test atomic bombs following World War II.

Dick Tracy: Code name for operation in February 1946 to survey a mass of German photographic intelligence material found in the American zone of operations during the war, and to make the survey readily available to U.S. and British military staffs.

Eclipse: Code name for November 1944 SHAEF posthostilities plan for Germany, to be put into effect as German territory was overrun.

Edible map: A cartographic representation printed on paper made from an edible substance, such as rice or mulberry leaves.

Field chart: A nautical chart compiled and printed on a field survey ship for rapid distribution during wartime, and frequently revised and reissued thereafter by the Hydrographic Office.

Flak map: A map showing the locations of antiaircraft gun emplacements in areas targeted for aerial bombardment.

Fluorescent map: A map reproduced with fluorescent ink or on fluorescent paper that allows legibility of the map in the dark under ultraviolet light.

Forager: Code name for operations in the Mariana Islands, including the seizure, occupation, and defense of Saipan, Tinian, and Guam, June 1944.

Going map: A map that shows information pertinent to the maneuvering of tanks and armored vehicles, including the terrain, obstacles, roads, river crossings, and the possibility of cross-country movement.

Grenade: Code name for the 21st Army Group large-scale offensive from the Roer to the Rhine, February 1945.

Hasty Terrain map: A map not based on precise trigonometric surveys but possessing detailed data, generally made from rapid surveys.

Iceberg: Code name for invasion of the Ryukyu Islands, notably Okinawa, April 1945.

Loran chart: A navigation chart designed for use with a long-range electronic navigation system.

Lowland countries: The countries of the Netherlands, Belgium, and Luxembourg.

Manuscript map: An original hand-drawn map compiled or constructed from data such as ground surveys and aerial photographs.

Market-Garden: Code name for combined ground-airborne operation to secure a bridgehead over the Rhine River in the Netherlands, September 1944.

Matterhorn: Code name for the plan to cripple Japan's steel industry by B-29 bomber raids from India through China.

Monthly: Code name for a collection of German photographic intelligence material surveyed by the Central Photographic Establishment in England, December 1946.

Mosaic: An assemblage of aerial photographs matched to form a continuous photographic representation of a portion of the Earth's surface.

Mulberry: One of two temporary man-made harbors constructed on the Normandy coast to provide protection to Allied shipping following the Overlord landings.

Neptune: Code name for the assault phase of Operation Overlord.

Oblique aerial photograph: An aerial photograph taken with the camera axis directed between the horizontal and the vertical.

Operations map: A map used to plan and check the execution of a mission.

Order of Battle map: A map showing the general tactical or administrative situation at a specific time. It is used for military staff study at the higher administrative levels, and is frequently used for long-range strategic planning.

Outline map: A map that has been compiled with a minimum of detailed information for the purpose of using the map as a base for additional information. Such maps are usually on a small scale and commonly show rivers, international boundaries, and sometimes principal settlements.

Overlay: A transparent sheet with information drawn on it, intended to be viewed when placed over a corresponding map or aerial photograph.

Overlord: Code name for Allied cross-Channel invasion of northwestern Europe, June 1944.

Overprint: Additional information printed on an existing map to show data of importance or special use.

Patron: Code name for a collection of German photographic intelligence material surveyed by the Central Photographic Establishment in England, December 1946.

Perspective: A term indicating a cartographic representation or sketch of a portion of the Earth's surface as viewed from a point in the air directed between horizontal and vertical. This is the cartographic equivalent of an oblique aerial photograph.

Photomap: A reproduction of an aerial photograph or an assembly of aerial photographs upon which map characteristics, such as grid lines, marginal data, and place names have been added.

Plancor: A project conducted by DPC of the Reconstruction Finance Corporation, by which industrial facilities and equipment were leased to private corporations to increase war production.

Plunder: Code name for 21st Army Group assault across the Rhine north of the Ruhr, March 1945.

Profile: A side or sectional elevation. The term can apply to a stationary structure (e.g., a bridge profile), to a ship (e.g., an inboard profile or an outboard profile), or to a section of the Earth's surface at a given site (e.g., a beach profile).

Relief model: A three-dimensional representation of an area showing the conformation of the ground, modeled to scale and usually colored to emphasize the various physical features.

Shingle: Code name for amphibious operation at Anzio, Italy, January 1944.

Site plan: A map of a small area on a large scale that represents a particular location, such as a military base, airfield, housing development, or industrial property.

Situation map: A map showing the specific tactical or administrative situation at a particular time. Used for staff study, usually by military units below the Army level, or as an adjunct to reports.

Stalemate: Code name for invasion of the Palaus in the Caroline Islands, September 1944.

Strategic map: A map used for overall military planning of operations.

Tactical map: A detailed map used for the planning and conduct of military operations.

Target chart: An aeronautical chart specifically designed to assist a pilot in locating and identifying a bombing target.

Thematic map: A map designed to serve a special purpose or to illustrate a particular subject.

Torch: Code name for Allied invasion of northwest Africa, November 1942.

Varsity: Code name for 1st Allied Airborne Army operation in support of Operation Plunder, March 1945.

V-E Day: Victory in Europe Day, May 8, 1945.

Vectograph: A stereoscopic photograph composed of two superimposed images that polarize light in planes 90 degrees apart. When viewed through special polaroid lenses, a three-dimensional image is seen.

Veritable: Code name for Canadian 1st Army operation to clear area between Meuse (Maas) and Rhine Rivers, January-February 1945.

Vertical aerial photograph: An aerial photograph taken with the camera axis directed approximately perpendicular to the surface of the Earth.

INDEX

Record group and donated materials collection titles appear in **boldface** type. Numbers in parentheses refer to record groups, and other numbers refer to paragraphs.

- A.P. Hill Military Reservation, VA, 391.1
- Aachen, Germany, 373.5, 407.3
- "ABCA Map Review," 160.1
- Aden Colony, 242.10
- Adige Line, 331.7
- Adjutant General's Office, 1917-** (RG 407), 407.1-407.13
- Administrative boundaries, 51.1, 59.1, 111.1, 165.2, 169.1, 226.3, 226.4, 242.6, 242.8, 260.1, 319.1, 319.4, 319.5, 319.7, 324.1, 331.6, 331.10, 332.4, 332.8, 338.1, 395.1, 407.7, 407.12, DM.1
- Aerial mosaics. *See* Mosaics
- Aerial photographs, 18.2, 18.4, 37.5, 37.6, 57.1, 77.5, 77.6, 77.10, 169.3, 169.4, 171.1, 234.5, 242.10, 242.11, 242.12, 242.13, 243.1, 289.1, 289.2, 313.3, 319.1, 319.2, 331.8, 331.11, 373.1, 373.2, 373.3, 373.4, 373.5, 373.6, 407.2, 407.13
- Aeronautical Chart Service (ACS), 18.1
- Aeronautical charts, 18.1, 23.2, 37.4, 37.6, 77.1, 77.2, 77.5, 242.5, 242.7, DM.2
 - international symbols, 37.5
- Aeronautical planning charts, 18.1, 23.2
- Aeronautics, Bureau of** (RG 72), 72.1-72.3
- Africa. *See* North Africa
- Africa-Middle East theater, 332.9
- Agricultural products, 16.1, 59.1, 77.6, 165.2, 226.1, 226.4, 319.5, 331.10
- Agriculture, Office of the Secretary of** (RG 16), 16.1
- Air distance, 18.1, 37.4, 59.2
- "Air Intelligence Summary" (journal), 289.1
- Air Ministry Works, British, 332.5
- Air navigation charts, 18.1, 37.4, 77.2, 77.5, DM.2
- Air operations, 84.1, 165.1, 226.4, 289.1, 331.1, 331.4, 331.5, 331.11, 373.6, DM.3
- Air routes, 18.1, 18.2, 77.5, 77.6, 226.3, 319.1, 332.7, 407.8
- Air searches, 313.2
- Air Transport Command, 77.5, 226.3
- Aircraft industry, 226.3, 226.4, 242.11
- Aircraft navigation, 37.5

Airfields, 18.2, 18.4, 37.3, 37.4, 37.6, 77.4, 77.5, 77.8, 127.1, 169.2, 226.4, 234.1, 242.7, 242.11, 242.13, 243.1, 253.1, 289.1, 289.2, 313.1, 319.2, 319.3, 319.5, 319.6, 331.3, 331.5, 331.7, 331.8, 331.11, 332.1, 332.2, 332.6, 407.12. *See also* Landing areas

Airplanes, 72.1, 373.5

Airships, 72.1

Alaska, 23.1, 23.2, 23.3, 26.2, 37.4, 57.1, 77.5, 77.8, 77.12, 92.1, 226.3, 253.1, 319.6, 324.2

Alaska Highway. *See* Alcan Highway

Albania, 169.2, 239.1, 242.9, 242.10, 319.2

Alcan Highway, 77.5, 319.6, 338.1

Aleutian Islands, 18.4, 37.3, 37.4, 37.6, 71.1, 71.2, 373.2

Algeria, 18.2, 38.1, 77.5, 92.1, 242.7, 242.9, 242.10, 242.13, 319.2, 331.7

Algiers, Algeria, 38.1, 319.2

Alien Property, Office of (RG 131), 131.1

Allen, Lt. Stookie, 407.5

Allied Forces Headquarters (Mediterranean) (AFHQ), 331.7

Allied Operational and Occupation Headquarters, World War II (RG 331), 331.1-331.11

Alps, 331.6

American Commission for the Protection and Salvage of Artistic and Historic Monuments in War Areas (RG 239), 239.1

American Graves Registration Service, 92.1, DM.3

American Telephone and Telegraph Company, 173.1

Anaglyphs, 242.13

Anchorage charts, 37.1

Angaur Island, Caroline Islands, 407.10

Antarctica, 324.2

Antiaircraft batteries, 242.6, 289.1, 289.2, 331.2, 331.5, 331.8

Antigua, 395.1

Anzio, Italy, 331.7, 407.9

Appenine Mountains, 242.13

Approach charts, 18.1

Aqueducts, 77.4, 169.3

Arabian Peninsula, 59.2, 84.1, 242.10

Archangel, U.S.S.R., 242.12

Architectural drawings, 26.2, 66.1, 71.1, 72.3, 77.12, 92.4, 112.1, 156.2, 177.3, 196.1, 210.2, 234.3, 338.2, 373.5

Ardennes, Battle of. *See* Bulge, Battle of the

Arizona, 210.1

Arkansas, 210.1, 210.2

Arkansas Bauxite District, 57.2

Arlington, VA, 66.1, 338.2, 373.1

Arlington Hall Station, VA, 338.2

Arms, Chief of (RG 177), 177.1-177.3

Army, Department of the, Historical Division, 319.2

Army Air Forces (RG 18), 18.1-18.4, 23.2
Army Center of Military History, 319.1
Army Commands, U.S., 1942- (RG 338), 338.1-338.2
Army Forces in the Far East, U.S. (USAFFE), 331.9
Army Forces in the Pacific (AFPAC), 338.1
Army Ground Forces, Headquarters (RG 337), 337.1
Army Intelligence and Security Command (INSCOM), 338.2
Army Map Service (AMS), 18.1, 77.1, 77.2, 77.3, 77.6, 77.7, 77.9, 77.10,
319.1, 319.5, 324.1
Army Overseas Operations and Command, U.S., 1898-1942 (RG 395), 395.1
Army Service Forces, Headquarters (RG 160), 160.1-160.2
Army Staff (RG 319), 319.1-319.7
Army support services, U.S., 319.1, 338.1
Arno Line, 407.9
Aroe Island, Moluccas, 331.8
Arsenals, 18.4, 156.2, 175.1, 373.6
Assam, India, 332.6, 332.7, DM.3
Atlantic Ocean, 37.1, 37.4, 38.1, 59.2, 77.5, 173.1, 226.3, 457.1
"Atlas of Population and Migration Trends," 226.5
Atlases, 16.1, 18.3, 37.1, 37.3, 37.5, 59.1, 160.2, 226.5, 242.9, 242.11, 332.6,
457.1, DM.3
Atomic bomb, 37.3, 289.2, 373.6
Attu Island, Aleutian Islands, 18.4, 319.6
Auschwitz concentration camp, 373.2
Australia, 77.2, 92.1, 226.4, 319.4, 324.1, 331.8
Austria, 43.1, 59.1, 226.3, 239.1, 242.7, 319.1, 331.6, 331.7, 373.5, 407.5,
407.11, DM.2
Autobahn system (Germany), 169.1, 332.4, 373.5
Automotive industry, 226.3
Azores, 18.2

Bahrain, 253.1
Baker, Sgt. George, 77.9
Balkan peninsula, 18.2, 18.3, 77.4
Barents Sea, 37.1
Barrage balloons, 242.6
Bataan "death march", 331.11
Bataan Peninsula, Philippines, 319.4
Batan Islands, Philippines, 331.11
Battle honors areas, 165.2
Bauxite, 57.2
Beach Erosion Board, 77.4
Beach patrol operations, 26.1
Beaches, 37.3, 169.3, 407.9, 407.13
Belgium, 43.1, 92.1, 239.1, 319.1, 331.3, 331.4, 331.11, 332.2, 332.5, 407.3,
407.6, 407.7

Belle-Isle, France, 332.1
 Belorussia, 373.3
 Benghazi, Libya, 373.5
 Benicia Arsenal, CA, 156.2
 Berchtesgaden retreat, Germany, 373.5
 Bergen, Norway, 373.5
 Berlin, Germany, 331.1, 373.5
 Bermuda, 72.2, 92.1, 319.7
 Bikini Atoll, 37.3
 Birkenau concentration camp, 373.2
 Bismarck Archipelago, 127.1, 242.8, 313.1, 331.8, 373.4, 373.6
 Black Sea, 169.1
 Blackout charts, 26.1
 Boggs, Samuel W., 59.2
 "Bogus" maps, 313.1, 407.2
 Bolivia, 234.1
 Bologna, Italy, 331.7
 Bombing targets, 37.3, 242.3, 242.4, 242.10, 242.11, 242.13, 243.1, 289.1,
 313.1, 319.2, 319.5, 373.3, 373.5, 373.6. *See also* Damage assessment;
 Target charts
 Bonin Islands, 77.4, 313.1, 373.2
 Borneo, 77.4, 331.8
 Bougainville Island, Solomon Islands, 127.1, 407.10
 Boundary proposals, Europe, 43.1. *See also* International boundaries
 Bowman, Isaiah, 59.1
 Brazil, 57.2, 92.1, 234.1, 234.5
 Brenner Pass, 226.3, 331.7
 Brest, France, 407.2
 Bridges, 66.1, 242.4, 242.7, 242.11, 242.12, 331.4, 331.5, 331.6, 332.2, 332.3,
 332.8, 407.2, 407.5, 407.6, 407.9, 407.13
 Bristol Channel, 242.13
 British Admiralty, 37.2
 British Columbia, Canada, 338.1
 British Directorate of Military Survey, 77.1
 British maps. *See* Foreign maps and charts, British
 Brittany, France, 319.1, 332.1, 332.2
 Budget, Bureau of the, 51.1
 Bulgaria, 43.1, 77.6, 239.1, 242.10, 319.2
 Bulge, Battle of the, 319.1, 331.4, 407.4
 Burma, 169.4, 253.1, 319.4, 324.1, 331.1, 332.7, 332.8, 373.2, 373.4, DM.3
 Burma Road, 77.5, 169.1, 253.1, 319.4, 332.6
 Burrill, Meredith F., 324.2

 Calcutta, India, 226.4, 332.6
 California, 23.3, 37.6, 95.1, 171.1, 210.1
 Cameras, 23.4

Camouflage, 171.1, 289.2, 407.2
Canada, 37.4, 37.5, 77.5, 77.8, 77.12, 92.2, 226.3, 242.9, 253.1, 338.1
Canary Islands, 77.3
Canol project, 77.8, 77.10, 77.12, 253.1
Cape Verde Islands, 18.2
Caribbean, 173.1, 253.1, 324.1
Caroline Islands, 77.4, 169.2, 242.8, 313.1, 373.2, 373.6, 407.10
Cartograms, 59.1, 169.1, 187.1, 219.1, 226.1, 253.1
Cartographic equipment, 77.11
Cebu Island, Philippines, 331.8
Celestial navigation, 18.1, 37.5
Central Europe, 77.9, 165.1, DM.2
"Central Pacific Islands Study," 59.2
Central Security Service (RG 457), 457.1
Chart reproduction, 18.1, 37.2, 37.5, 77.2. *See also* Mapmaking
Chemical Warfare Service (RG 175), 175.1
Cherbourg, France, 226.3, 319.1
Chief Signal Officer, Office of (RG 111), 111.1
China, 18.2, 18.3, 37.1, 37.3, 37.5, 59.1, 77.2, 77.3, 77.4, 77.5, 77.6, 77.9,
84.1, 92.1, 127.1, 165.2, 169.1, 226.2, 226.4, 242.8, 289.1, 313.1, 319.4,
324.2, 331.1, 331.8, 332.6, 332.7, 332.8, 373.2, 373.4, 373.6, 395.1, DM.3
China-Burma-India (CBI) theater, 332.6, 332.7, 332.8
Chinese maps. *See* Foreign maps and charts, Chinese
Chungking, China, 84.1
CINCPAC/CINCPOA, 289.2, 313.1, 313.3
City plans, 18.2, 59.1, 77.1, 77.6, 127.1, 169.4, 226.1, 226.4, 234.1, 242.3,
242.7, 242.8, 319.2, 319.3, 319.5, 331.2, 332.2, 338.1, 407.1, 407.2, DM.1
Civilian Defense, Office of (RG 171), 171.1
Climate, 18.3, 37.5, 59.1, 92.2, 165.2, 226.1, 242.9
Cloth charts, 18.1, 37.4, 77.10
Clothing needs, 92.2
Coal, 57.2, 77.6, 169.3, 219.1, 226.3, 234.2, 324.1
Coast Artillery Corps, 156.1, 177.2
Coast and Geodetic Survey (RG 23), 18.1, 23.1-23.4, 26.1
Coast Guard, U.S. (RG 26), 23.3, 26.1-26.3
Coastal areas, 23.1, 23.3, 26.1, 37.1, 37.2, 37.5, 77.2, 77.3, 77.4, 169.4,
177.3, 226.3, 242.3, 242.7, 242.9, 242.11, 242.13, 319.1, 331.8, 373.1,
373.5, 407.9, 407.13
Coastal defenses, 242.9
Cologne, Germany, 373.5
Colombia, 71.1, 234.1
Comacchio, Italy, 331.7
"Combat Area" (British Isles), 59.2, 178.1
Communications, 84.1, 111.1, 173.1, 226.1, 242.9, 331.3, 331.5, 332.8, 407.6
Communications facilities, 59.1, 71.1, 71.2, 173.1, 234.1, 319.4, 332.2
Community War Services, Office of (RG 215), 215.1

Concentration camps, 373.2 ; 226,055 3761
Construction and Repair, Bureau of, 19.1
Corregidor Island, Philippines, 177.1, 331.8, 373.6, 395.1
Corsica, 169.4, 239.1, 242.7, 407.8
Cotentin Peninsula, France, 111.1, 242.4, 331.2, 407.2
Crete, 242.5, 331.7
Cuba, 37.6, 38.1, 92.1, 173.1
Cultural sites, 239.1
Cyprus, 242.10
Czechoslovakia, 43.1, 59.2, 239.1, 242.5, 332.5, 373.3, DM.2

Damage assessment, 289.1, 289.2, 319.1, 331.5, 331.6, 373.3, 373.5, 373.6,
407.6. *See also* Bombing targets
Dams, 407.7
Defense Homes Corporation, 66.1
Defense housing, 31.1, 187.1, 196.1, 196.2
Defense industries, 77.5, 179.1, 187.1, 234.1, 234.2, 234.3, 234.4, 234.5,
242.3, 242.6, 242.11, 243.1, 253.1, 289.2
Defense Intelligence Agency (DIA) (RG 373), 373.1-373.6
Defense Plant Corporation (DPC), 234.2, 234.3, 234.4
Defense Supplies Corporation (DSC), 234.1
Defense Transportation, Office of (RG 219), 219.1
"Defense Zone" (U.S.), 57.1
Denmark, 239.1, 331.3, DM.2
"Deutsche Weltkarte" series, 242.2, 242.7
Dirigibles, 72.1
District of Columbia (DC), 31.1, 66.1, 66.2, 196.1
Dniester River, U.S.S.R., 319.3
Dodecanese Islands, 77.3, 319.2, 373.5
Donated materials, DM.1-DM.3
Dunkirk, France, 226.3, 373.5
Duren, Germany, 319.1, 332.3, 373.5, 407.3

Eastern Europe, 165.1, 242.5, 373.3, DM.2
Economic Warfare, Board of, 169.1
Ecuador, 324.1
Edgewood Arsenal, MD, 175.1
Edible maps, 77.1
Egypt, 242.9, 242.10, 253.1, 331.7
Electric power, 59.1, 77.4, 169.1, 226.1, 226.4, 242.4, 331.6, 331.10, 332.1,
407.10
Emergency Rubber Project, 95.1
Emirau, Bismarck Archipelago, 127.1
Engineer Reproduction Plant (ERP), 77.1, 77.2
Engineer Topographic Battalions, 64th, 313.1
Engineering, Bureau of, 19.1

Engineering plans and drawings, 19.1, 23.4, 26.3, 71.3, 72.1, 74.1, 156.1,
 169.5, 175.1, 177.2, 227.1, 234.4, 336.1
 Engineers, Army Corps of, 77.2, 77.4, 77.10, 332.5, 407.5, 407.9
Engineers, Office of the Chief of (RG 77), 77.1-77.12
 England. *See* Great Britain
 Eniwetok, Marshall Islands, 313.3, 373.2
 Erft River, 407.6
 Eskimos, 37.5
 Estonia, 242.9
 Ethnic populations 59.1, 226.1
 European theater, 165.1, 226.2, 289.1, 319.1, 331.1, 332.1, 338.1, 407.2-407.7,
 407.13
 European Theater of Operations, U.S. Army (ETOUSA), 332.1-332.5, 332.8
 Evacuation routes, 332.4, 332.5, 332.8
 Evasion maps, 331.8, 332.6

 Falaise Gap, 242.4,
 Far East, 18.1, 18.2, 37.4, 59.1, 77.4, 77.5, 77.6, 165.1, 169.1, 242.1, 242.8,
 289.1, 319.4, 332.6, 373.2, 373.4, 373.5, 373.6
 Federal Board of Surveys and Maps, 51.1, 59.2
Federal Communications Commission (RG 173), 173.1
Federal Housing Administration (RG 31), 31.1
 Federal Public Housing Authority, 196.1, 196.2
 Federal Security Agency, 215.1
 Field charts, 37.2
Fine Arts, Commission of (RG 66), 66.1-66.2
 Finland, 18.2, 43.1, 226.3
 "Flak" maps, 18.2, 289.2, 313.1
 Fleet operating area charts, 37.1
 Flight charts, 23.2
 Flooding, 242.11
 Florida, 37.6
 Florida Islands, 127.1
 Fluorescent maps, 18.1, 77.9, 77.10
Foreign Economic Administration (RG 169), 169.1-169.5
 Foreign maps and charts, 37.2, 77.9, 77.11
 British, 37.2, 77.2
 Chinese, 37.5, 77.3, 77.9, 332.7
 French, 37.2
 German, 59.2, 77.3, 77.9, 77.11, 242.1, 242.2, 242.4, 242.5, 242.6, 242.7,
 242.8, 242.9, 319.1, 319.2, 319.3, DM.2
 Italian, 242.1, 242.7, 242.8, 407.8
 Japanese, 37.2, 77.2, 77.3, 77.9, 242.1, 242.8, 319.4, 319.5, 332.7, 332.8,
 407.10
 Polish, 77.9, 331.7

Soviet, 23.3, 77.9, 242.1, 242.6, 319.3
 Spanish, 77.9
 Foreign Ministers, Council of, 43.1
 Foreign records, 37.2, 242.1, 242.3, 242.4, 242.9, 242.10, 242.11, 407.12
 Foreign Service posts, 59.1, 84.1
Forest Service (RG 95), 95.1
 Formosa, 18.2, 37.4, 77.4, 77.6, 92.1, 169.2, 313.1, 324.1, 331.8, 331.11,
 332.7, 373.4
 Fort Belvoir, VA, 77.11
 Fort H.G. Wright, NY, 156.2
 Fort Knox, KY, 338.1
 Fort Monroe, VA, Submarine Mine Depot, 156.1
 Fort Oglethorpe, GA, 391.1
 Fort Ontario Refugee Shelter, NY, 210.1
 Fort Totten, NY, Torpedo Depot, 156.2
 Forts. *See* Military defenses; Military installations
 France, 18.2, 18.3, 37.2, 43.1, 77.4, 77.6, 77.9, 92.1, 111.1, 165.1, 169.2,
 169.3, 169.4, 226.3, 239.1, 242.2, 242.4, 242.9, 242.10, 242.11, 242.13,
 319.1, 331.1, 331.2, 331.3, 331.7, 331.11, 332.1, 332.2, 332.5, 338.1,
 373.2, 373.5, 407.2, 407.3, 407.4, 407.5, 407.6, 407.7, 407.8, 407.13,
 DM.1, DM.2, DM.3
 French colonies, 226.3
 French Expeditionary Corps, 407.9
 French Guinea, 242.10
 French maps. *See* Foreign maps and charts, French
 Futa Pass, 242.13, 407.9

 Gazetteers, 23.3, 37.5, 59.1, 77.9, 324.2, DM.2. *See also* Place names
 Geodetic data, 77.11
Geographic Names, Board on (RG 324), 77.10, 324.1-324.2
 Geographic Section, General Staff (GSGS) (British), 77.1, 77.6, 77.9, 260.1,
 319.1, 319.3, DM.2
Geological Survey (RG 57), 57.1-57.2, 77.4
 Geology, 242.6, 253.1, 319.5, 331.10
 Georgia, 391.1
 German Maps. *See* Foreign maps and charts, German
 German National Redoubt Area, 331.6
 Germany, 23.3, 43.1, 59.1, 59.2, 77.3, 77.9, 77.11, 131.1, 169.1, 169.3, 173.1,
 226.3, 239.1, 242.2, 242.5, 253.1, 260.1, 289.2, 319.1, 319.3, 331.1, 331.3,
 331.5, 331.6, 331.11, 332.3, 332.4, 338.1, 373.2, 373.5, 407.3, 407.4, 407.5,
 407.6, 407.7, 407.11, 407.13, DM.1, DM.2
 Gibraltar, 242.13
 Gilbert Islands, 289.2, 313.1, 373.2, 373.6
 Globes, 59.2
 Glossaries, 37.5, 77.9, DM.2
 "Going" maps, 331.3, 331.7

Gothic Line, 407.9
 Graphs, 59.1, 77.4, 169.1, 187.1, 226.1, 242.6, 253.1, 319.3, 332.5, 332.8
 Great Britain, 18.2, 59.2, 77.2, 92.1, 160.1, 178.1, 196.1, 242.3, 242.9, 242.10,
 242.11, 242.13, 332.5, 373.3, 407.11, 457.1
 Great Lakes, 219.1
 Grebbe line, 242.4
 Greece, 43.1, 59.2, 169.1, 226.3, 239.1, 242.9, 242.10, 319.2, 331.7
 Greenland, 18.2, 26.1, 37.5, 77.5, 92.1, 407.12
 Greenland Sea, 37.1
 Guadalcanal, 127.1, 313.1, 313.3, 373.2, 373.6
 Guam, 23.1, 37.3, 37.6, 71.1, 71.2, 77.3, 313.1, 373.2, 373.6
 Guatemala, 226.1
 Guayule plantations, 95.1
 Gulf of Mexico, 23.1, 37.1, 131.1, 173.1
 Gulf of Salerno, 331.7, 407.13
 Guided missiles, 72.1
 Gussak, Elizabeth, DM.3
 Gussak, Maj. J.J., DM.3
 Gustav Line, 407.9

Hainan Island, 331.8
 Hamburg, Germany, 331.6, 373.5
 Handbooks, 37.5, 77.9, 77.11, 242.9, 289.1, 289.2
 Hangars, 71.1, 177.3
 Hanoi, Indochina, 226.4
 Harbor facilities, 26.1, 131.1, 373.5
 Harbors, 37.1, 37.3, 131.1, 169.3, 331.8, 331.11
 "Hasty Terrain" maps, 127.1, 407.10
 Hatlem, Capt. J.C., 319.2
 Hawaiian Islands, 23.1, 23.2, 37.1, 38.1, 57.1, 71.1, 71.2, 80.1, 92.1, 112.1,
 177.3, 313.1, 373.2
 Hepburn Board, 37.3
 Hiroshima, Japan, 289.2, 373.6
 Historic monuments, 239.1
 Hokkaido, Japan, 169.2
 Hong Kong, 169.1
 Honshu Island, Japan, 331.11
 Hospital ships, 112.1, 336.1
 Hospitals, 45.1, 71.1, 71.2, 112.1, 112.2, 210.2, 332.5, 332.8
 Hough, Maj. Floyd W., 77.11
 Hungary, 18.2, 43.1, 59.2, 239.1, 242.5, 319.2, 373.5
 Hunter, Col. Kelvin, DM.2
 Hydrographic Bulletin, 37.5
 Hydrographic charts, 242.3, 242.8. *See also* Nautical charts
 Hydrographic Office (RG 37), 37.1-37.6

Ice, 37.5, 242.9
Iceland, 92.1, 127.1, 242.9, 242.10, 319.7
Idaho, 210.1
Ie Shima, 319.4
Index charts, 18.1, 37.2, 37.4
Index maps, 23.2, 57.1, 77.1, 319.2
India, 77.5, 92.1, 226.4, 253.1, 332.6, 332.7, 332.8, DM.3
Indian Ocean, 37.1, 37.3, 457.1
Indochina, 18.2, 37.5, 38.1, 77.5, 77.6, 169.1, 169.3, 226.4, 239.1, 332.6, 373.2, 373.4, 395.1
Industrial production, 319.5
Industry, 18.4, 59.1, 77.5, 165.2, 169.1, 169.3, 226.1, 226.3, 234.2, 234.3, 234.4, 242.3, 242.4, 242.5, 242.6, 242.11, 243.1, 289.1, 331.6, 373.5, 407.10
Inter Service Information Series (ISIS) (British), 169.4
Interior, Department of the, 324.2
International Air Transport Division, 169.1
International boundaries, 43.1, 59.1, 59.2, 226.1, 242.5, 242.6, 319.3. *See also* Boundary proposals, Europe
International Conferences, Commissions, and Expositions (RG 43), 43.1
"International Map of the World," 57.1
"International Weltkarte" series, 242.2
Iron, 77.6, 242.6, 242.10, 319.2, 332.9
Iraq, 242.10, 319.2
Ireland, 242.10
Italian colonies, 43.1
Italian maps. *See* Foreign maps and charts, Italian
Italy, 18.2, 18.3, 43.1, 77.3, 77.4, 77.6, 92.1, 165.1, 169.2, 226.3, 239.1, 242.2, 242.7, 242.10, 242.11, 319.2, 331.1, 331.7, 373.2, 407.8, 407.9, 407.13
Ivory Coast, 242.10
Iwo Jima, 92.1, 289.2, 313.1, 373.2
Japan, 18.2, 37.1, 37.3, 37.4, 37.5, 38.1, 59.1, 77.2, 77.3, 77.4, 77.5, 77.6, 77.9, 77.10, 92.1, 92.2, 169.2, 226.4, 239.1, 242.8, 242.9, 243.1, 289.1, 289.2, 313.1, 319.5, 324.1, 324.2, 331.9, 331.10, 338.1, 373.2, 373.6, 407.10, DM.2
Japanese maps. *See* Foreign maps and charts, Japanese
Japanese Natural Resources: A Comprehensive Survey, 331.10
Japanese relocation centers, 210.1, 210.2
Jerome Relocation Center, AR, 210.2
Johnson Automatics Company, 227.1
Joint Army-Navy Intelligence Studies (JANIS), 289.2
Joint military operations, 37.3

Kai Island, Moluccas, 331.8
 Kalymnos, Dodecanese Islands, 319.2
 Kasserine, Battle of, 319.2, 407.8
 Khorramshahr, Iran, 332.9
 Kiska Island, Aleutian Islands, 18.4, 37.3, 319.6
 Kodiak Island, 319.6
 Kolombangara, 127.1, 313.3
 Konan Nitrogen Fertilizer Plant, Korea, 407.10
 Korea, 18.2, 37.1, 59.1, 77.2, 77.6, 77.10, 165.2, 239.1, 242.8, 243.1, 313.1,
 319.5, 324.2, 331.8, 331.10, 332.6, 407.10, 407.11
 Kure, Japan, 289.2
 Kure Naval Arsenal, Japan, 373.6
 Kursk, Battle of, 407.12
 Kwajalein, Marshall Islands, 313.1, 313.3, 373.2
 Kyushu, Japan, 313.1

Labor, Office of (RG 224), 224.1
 Lake Comacchio, 407.9
 Lakehurst naval airship station, 71.1, 72.1, 72.2, 72.3
 Landing areas, 18.2, 37.5, 77.5, 77.6, 127.1, 234.1, 242.11, 373.5, 407.12. *See*
also Airfields
 Landing beaches, 38.1, 77.4, 165.2, 169.4, 319.1, 331.2, 331.7, 331.8, 331.11,
 332.1
 Landing charts, 37.5
 Lanham Act, 196.1
 Latvia, 242.9, 373.3
 Le Havre, France, 319.1, 373.5
 Lebanon, 84.1
 Ledo, India, 332.6
 Ledo Road, 253.1, 319.4
 Leningrad, U.S.S.R., 242.12
 Lesbos, Greece, 319.2
 Leyte, Philippines, 313.1, 331.8
 Libya, 77.3, 242.10, 331.7, 373.5
 Lifesaving stations, 26.1, 26.2
 Lighthouses, 26.1, 26.2
 Lingayen Gulf, Philippines, 319.4, 407.10
 Lippe River, 332.3
 Lithuania, 242.9, 373.3
 London, Great Britain, 242.11
 London Conference of Deputies of Foreign Ministers, 43.1
 Loran charts, 18.1, 37.4, 324.1
 Louisiana, 253.1
 Lowland countries, 169.3, 242.4, 331.1, 331.3, 331.4, 332.1, 338.1, 373.2,
 407.3, 407.4, DM.1

Luxembourg, 43.1, 92.1, 319.1, 331.3, 331.4, 332.5, 407.3, 407.5, 407.6, 407.7
Luzon, Philippines, 77.2, 313.1, 319.4, 331.8, 373.6, 407.10

Maastricht, Netherlands, 332.2

Macao, 59.2

MacArthur, General Douglas, reports of, 331.9

Madeira Islands, 18.2

Maginot Line, 319.1, 331.2, 332.2, 407.2

Magnetic declination, 23.2

Mainz, Germany, DM.1

Majorca, 242.13

Makin Atoll, Gilbert Islands, 313.1

Malaya, 242.8, 332.8

Malta, 242.9, 242.10, 242.13

Management and Budget, Office of (RG 51), 51.1

Manchuria, 18.2, 77.2, 77.4, 226.4, 242.8, 332.6, 332.7

Manila Harbor, Philippines, 23.3, 331.8

Mapmaking, 77.7, 77.9, 77.10. *See also* Chart reproduction

Maps, use of by artillery, 77.10

Mare Island, California, 19.1

Mareth Line, 319.2, 373.5

Mariana Islands, 18.2, 37.3, 37.6, 92.1, 127.1, 169.2, 242.8, 313.1, 313.3,
373.2, 373.6, 407.10

Marine Corps, U.S. (RG 127), 127.1

Marine Historical Museum, 127.1

Maritime Commission, U.S. (RG 178), 59.2, 178.1

Marshall Islands, 37.3, 92.1, 289.2, 313.1, 313.3, 373.2

Mauritania, 242.10

Mediterranean Sea, 23.2, 319.1

Mediterranean theater, 165.1, 242.7, 242.13, 289.1, 331.1, 407.1, 407.8, 407.13

Merauke, Netherlands New Guinea, 242.8

Merchant ships, 59.2, 226.3, 289.2, 457.1

Meuse River, 319.1

Mexico, 253.1

Michel, M. Henri, DM.3

Middle East, 77.5, 77.6, 84.1, 242.6, 242.10, 253.1, 319.2, 324.1, 373.3

Midway Island, 23.1, 373.2, 373.6

Milford Haven, Wales, 242.3

Military cemeteries, 92.1

Military defenses, 18.2, 77.3, 165.2, 169.1, 169.4, 177.1, 226.3, 242.3, 242.4,
242.5, 242.6, 242.7, 242.9, 242.12, 289.2, 313.1, 319.1, 319.2, 319.3,
319.4, 319.5, 319.7, 331.2, 331.3, 331.5, 331.6, 331.7, 331.8, 332.1, 332.2,
332.3, 332.8, 373.5, 373.6, 395.1, 407.2, 407.3, 407.5, 407.9, 407.13,
DM.1

Military depots, 331.3, 332.4, 332.5. *See also* Ordnance depots

Military districts, 226.4, 242.5, 242.6, 260.1, 319.3

Military installations, foreign, 59.1, 71.1, 71.2, 127.1, 165.2, 242.13, 331.2,
 331.6, 373.3, 373.6, 407.2
 British, 72.2, 242.3
 Japanese, 319.5, 331.8
 Russian, 319.3

Military installations, U.S., 18.4, 66.2, 71.1, 71.2, 72.2, 77.8, 77.12, 92.3,
 92.4, 127.1, 177.1, 215.1, 319.6, 338.1, 373.1, 391.1
 airbases, 18.2, 71.1, 72.2, 77.12, 127.1, 242.3
 Navy, 37.3, 45.1, 71.1, 71.2, 242.9, 319.7

Military Intelligence Division (MID), 77.2, 77.4, 165.2, 169.2

Military Intelligence Photographic Interpretation (MIPI) reports, 289.1, 373.5

Military Intelligence Section (MIS), 165.2

Military medals, 66.1

Military operations, 165.1, 226.1, 226.2, 226.4, 242.4, 242.6, 313.1, 313.2,
 319.1, 319.2, 319.3, 319.4, 319.6, 331.1, 331.2, 331.3, 331.4, 331.5, 331.7,
 331.8, 331.9, 332.7, 373.2, 407.2, 407.4, 407.5, 407.8, 407.9, 407.10,
 407.11, 407.12, 407.13, DM.1

Military operations, Japanese, 226.2, 226.4, 319.4, 331.9, 332.7

Military situation maps. *See* Situation maps

Military units, foreign

 British, 332.5

 French, 331.1, 331.5

 German, 242.13, 319.2, 319.3, 331.1

 Italian, 242.7, 407.8

 Polish, 331.7

 Russian, 242.6, 319.3, 332.7

Military units, U.S.

 Airbourne Division, 101st, 331.4

 Armies, 1st, 77.10, 319.1, 331.2; 3rd, 77.10, 331.5, 407.4, DM.1, DM.2;
 5th and 6th, 407.11; 7th, 331.1, 331.5; 8th, 338.1, 407.11; 9th, 77.10,
 407.4; 15th, 77.10

 Armored Division, 3rd, 319.1

 Army Air Forces, 18.2

 Army Groups, 6th and 12th, 319.1, 331.1

 Corps, II, 407.9; IV, 319.2; VII, 319.1, 407.5, 407.6, 407.11; XII, 407.4,
 407.5, DM.1; XIX, 407.6, DM.2; XXIV, 319.4

 Engineer Combat Battalion, 133d, 407.5

 Engineer Combat Group, 1106th, 407.5

 Infantry Division, 7th, 407.11, DM.2; 9th, 319.1; 30th, 319.1; 35th, 407.4;
 66th and 71st, 407.11; 91st, 407.9; 95th, DM.2

Mindanao Island, Philippines, 331.11

Minefields, 242.7, 242.9, 331.4, 332.2, 407.2, 407.3

Mineral industries, 57.2, 234.2, 234.3, 234.4

Mineral resources, 57.2, 59.1, 77.4, 77.6, 165.2, 187.1, 226.1, 234.2, 242.5,
 324.1, 331.6

Mines and mine planting equipment, 156.1, 177.2, 242.9, 242.12

Mitsubishi Aircraft Engine Works, Japan, 373.6
 Molds, model, 23.2
 Moluccas Islands, 169.2, 331.8
 Monte Cassino, Battle of, 331.7
 Monuments, 239.1
 Morocco, 18.2, 77.4, 77.5, 92.1, 169.4, 242.10
 Mosaics, 18.4, 37.6, 77.4, 77.5, 169.4, 242.10, 242.12, 242.13, 289.1, 313.3,
 331.11, 332.3, 373.5, 373.6, 407.13
 Moselle River, 332.2, 332.3, 407.3
 Mourmelon-le-Grand, France, 407.7
 Mulberry harbors, 373.5
 Multipartite Survey Committee (Germany), 77.11
 Murmansk, U.S.S.R., 242.12

 N.V. Potash Export Company of Amsterdam, 131.1
 Nagasaki, Japan, 289.2, 373.6
National Archives Collection of Foreign Records Seized, 1941- (RG 242),
 242.1-242.13
 National Bureau of Standards, 227.1
 National defense aircraft warning system, 95.1
 National defense fire-protection areas, 95.1
 National Defense Research Committee, 227.1
 National Housing Act, Title VI, 31.1
 National Housing Agency, 31.1
National Resources Planning Board (RG 187), 187.1
National Security Agency (RG 457), 457.1
 Natural resources, 224.1, 226.1, 226.3, 226.5, 331.6, 331.10
 Nautical charts, 23.1, 23.2, 26.1, 37.1, 37.5. *See also* Hydrographic charts
 Naval Air Engineering Center (NAEC), 72.1
 Naval Air Material Center (NAMC), 72.1
 Naval air stations, 71.1, 71.2, 112.1, 319.6
 Naval Air Technical Services Facility, 72.1
 Naval districts, 37.3, 319.5
Naval Intelligence, Command (RG 289) 289.1-289.2, 373.5
 Naval Intelligence, Office of, 38.1
 Naval Intelligence Photographic Interpretation (NIPI) reports, 289.1, 373.5
Naval Operating Forces (RG 313), 313.1-313.3
 Naval operations, 242.9, 313.2
Naval Operations, Office of the Chief of (RG 38), 38.1
 Naval Ordnance Test Station, CA, 227.1
Naval Records and Library, Office of (RG 45), 45.1
Navy, Department of the (RG 80), 19.1, 37.5, 66.1, 80.1, 336.1
 Navy Aircraft Factory (NAF), 72.1
 Navy ships, U.S., 19.1, 37.5, 38.1, 71.3, 80.1, 289.2, 313.2, 336.1, 457.1
 Navy yards, 38.1, 71.1, 71.2. *See also* Shipyards
 Neckar River, 331.6

Negros Island, Philippines, 331.8
 Netherland Forces Intelligence Service (NEFIS), 331.8
 Netherlands, The, 43.1, 92.1, 239.1, 242.4, 242.9, 319.1, 331.3, 331.4, 332.2, 407.6
 Netherlands East Indies, 77.3, 169.1, 226.4, 239.1, 242.8, 319.4, 331.8, 373.4
 Netherlands New Guinea, 77.4, 169.2, 242.8
 New Britain, 37.3, 373.4
 New Caledonia, 324.1
 New England, 26.1
 New Georgia Island, Solomon Islands, 37.3, 127.1, 313.1, 313.3
 New Guinea, 37.3, 92.1, 165.1, 242.8, 319.4, 331.8, 331.11, 373.4, 373.6
 New Hebrides Islands, 313.1
 New Ireland, Bismarck Archipelago, 127.1, 373.4
 New Jersey, 72.1
 New Mexico, 210.1
 New York, 26.1, 156.1, 156.2, 210.1, 219.1
 Newfoundland, Canada, 37.4, 71.1, 77.8, 92.1
 "Newsmag," 160.1. *See also* "Southwest Pacific Newsmag"
 Nicaragua, 38.1
 Nicobar Islands, 332.8
 Normandy, France, 77.6, 226.3, 242.4, 331.1, 331.2, 331.11, 332.1, 373.2, 373.5, 407.2, 407.5, DM.1
 North Africa, 18.2, 37.2, 77.5, 77.6, 165.1, 242.1, 242.2, 242.7, 242.10, 319.2, 331.7, 373.3, 373.5, 407.8
 North Africa theater, 226.2, 242.7, 242.13, 319.2, 331.7, 332.1
 North Atlantic aerial "ferry route," 18.2
 North Carolina, 253.1
 Northern Ireland, 92.1
 Norway, 196.1, 226.3, 239.1, 242.11, 324.1, 331.3, 373.5

 Oahu, Hawaii, 57.1, 112.1
 Occupation Headquarters, U.S., World War II (RG 260), 260.1
 Occupation zones, 59.1
 Allied, 226.3, 331.6
 Axis, 226.3
 in Germany, 23.3, 77.11, 260.1, 331.6, 338.1, 407.6
 in Japan, 331.9, 331.10, 338.1
 Japanese, 319.4
 Ocean currents, 37.1, 37.5, 242.9
 Okinawa, Ryukyu Islands, 92.1, 313.1, 319.4, 373.2, 407.10
 Omaha Beach, 331.2, 332.1, 373.5, 407.2
 Operation Anvil, 331.1, 331.7, 407.8
 Operation Avalanche, 331.7, 407.13
 Operation Barbarossa, 242.6, 319.3
 Operation Blackcock, 331.4
 Operation Blacklist, 313.2

Operation Campus, 313.2
 Operation Crossbow, 331.4
 Operation Crossroads, 37.3
 Operation Dick Tracy, 373.3
 Operation Eclipse, 331.3, 331.6
 Operation Forager, 313.2
 Operation Grenade, 331.4
 Operation Iceberg, 313.2
 Operation Market-Garden, 319.1, 331.4
 Operation Matterhorn, 253.1, 332.6
 Operation Monthly, 373.3
 Operation Neptune, 331.2
 Operation Overlord, 331.3
 Operation Patron, 373.3
 Operation Plunder, 331.5
 Operation Shingle, 407.9
 Operation Stalemate, 313.2
 Operation Torch, 319.2, 331.7
 Operation Varsity, 331.5
 Operation Veritable, 331.4
 Order of Battle maps, 165.1, 242.2, 331.1, 407.8
 Ordnance, 74.1, 156.1, 156.2, 227.1
 Ordnance, Bureau of (RG 74), 74.1
 Ordnance, Office of the Chief of (RG 156), 156.1-156.2
 Ordnance depots, 18.4, 77.12, 243.1, 407.7. *See also* Military depots
 Ordnance Development, Division of, 227.1
 Ordnance plants, 71.1, 71.2
 Ordnance Survey, 77.2
 Oregon, 23.3
 Organization charts, 319.7, 337.1
 Outline maps, 31.1, 37.3, 242.3, 242.4, 242.7, 319.4, 457.1

 Pacific islands, 37.1-37.6, 59.2, 71.1, 127.1, 169.2, 242.8, 319.5, 373.2, 373.6, 457.1
 Pacific Ocean, 37.1, 37.3, 37.4, 38.1, 173.1, 313.2, 457.1
 Pacific Ocean Area, Joint Intelligence Center (JICPOA), 37.3, 80.1, 313.1
 Pacific theater, 66.1, 165.1, 226.2, 226.3, 226.4, 289.1, 313.1, 313.2, 319.4, 319.5, 319.7, 331.1, 407.1, 407.10
 Palau Islands, Caroline Islands, 407.10
 Panama, 395.1, 457.1
 Panama Canal Zones, 23.1, 37.1, 37.6, 71.1, 92.1, 112.1, 177.3
 Panay Island, Philippines, 331.8
 Pantelleria, Italy, 77.3, 165.1
 Papua, 331.8
 Paratroopers, 331.4, 331.7
 Paris, France, 332.2

Paris Peace Conference, 43.1
 Pasvolsky, Leo, 59.1
 Pauley Reparations Mission, 59.1
 Peace conferences, 43.1, 59.1
 Peace treaties, 43.1
 Pearl Harbor, Hawaii, 80.1
 Peenemunde Proving Ground, 72.1, 373.2
 Peiping (Peking), China, 373.6
 Pembroke, Wales, 242.3, 242.13
 Pentagon, 66.1, 373.1
 Persian Gulf Command, 332.9
 Perspective views, 18.2, 37.4, 319.4, 319.6, 331.7, 332.1, 407.10
 Peru, 234.1, 324.1
 Pescadores Islands, 319.4
Petroleum Administration for War (RG 253), 253.1
 Petroleum industry, 18.4, 169.1, 253.1, 324.1, 373.5
 Petroleum reserves, 57.2, 77.6, 77.8, 84.1, 169.1, 219.1, 226.3, 226.4, 253.1, 324.1
 Petroleum supplies, 242.9, 253.1
 Philippine Islands, 18.2, 23.1-3, 37.3, 71.1, 71.2, 77.2, 77.3, 77.4, 77.9, 77.12, 92.1, 165.1, 169.2, 177.1, 177.3, 239.1, 242.8, 313.1, 319.4, 331.8, 331.11, 373.2, 373.4, 373.6, 395.1, 407.10, 407.11
 Philippine Sea, 313.2
 Photomaps, 18.2, 77.1, 77.8, 127.1, 289.1, 313.1, 331.1, 331.6, 331.7, 331.8, 332.2, 332.3, 332.5, 407.1, 407.3, 407.9, 407.10, DM.1
 Pilot charts (nautical), 37.1
 Pilotage charts (aeronautical), 18.1
 Pipelines, 77.6, 77.8, 219.1, 226.4, 253.1, 319.2
 Place names, 37.5, 59.2, 77.9, 77.10, 324.1, 324.2, 457.1. *See also* Gazetteers
 Plancor project, 234.2, 234.3, 234.4
 Plantation Pipeline Company, 253.1
 Po River, 407.9, 407.13
 Poland, 77.3, 77.9, 226.3, 242.9, 373.2, 373.3, DM.2
 Polaroid viewers, 18.4
 Polish maps. *See* Foreign maps and charts, Polish
 Population distribution, 59.1, 165.2, 169.1, 226.1, 226.5, 242.5, 331.10, 332.1
 Ports, 77.12, 112.1, 131.1, 169.1, 169.3, 226.3, 242.4, 242.7, 242.11, 242.12, 242.13, 289.1, 289.2, 331.1, 373.5
 Portugal, 18.2, 18.3, 242.9
 Portuguese colonies, 242.9
 Post-operations maps, 319.1, 331.8, 407.11, DM.2
 Postwar mapping, 77.11
 Postwar planning, 16.1, 187.1, 324.2
 "Preparation of Maps in Connection With War Housing Programs," 31.1
 Prims River, 332.2
 Prisoner of war camps, 289.2, 319.4, 331.6, 332.8

Psel River, U.S.S.R., 242.12
Public Housing Administration (RG 196), 196.1-196.2
 Puerto Rico, 23.1, 57.1, 92.1, 112.1, 196.1

Quartermaster General, Office of the (RG 92), 92.1-92.4
 Queensland, Australia, 319.4

 Radio direction finding charts, 23.2
 Railroads, 77.4, 77.5, 169.3, 169.5, 219.1, 242.4, 242.8, 260.1, 319.2, 319.3,
 331.3, 331.5, 332.1, 332.6, 373.5, DM.3
 Rainfall, 59.1
 Reconstruction, postwar, 59.2
Reconstruction Finance Corporation (RG 234), 234.1-234.5
 Rees bridge, 332.3
 Refugees, 210.1, 407.7
Regular Army Mobile Units, U.S. (RG 391), 391.1
 Relief models, 23.2, 77.6, 77.9
 Relocation centers, 210.1, 210.2
 Remagen Bridge, 331.5
 Rendova, 127.1
 Resia Pass, 331.7
 Resistance movements, 226.3, 331.2, 331.3, 407.10, DM.3
 Reykjavik, Iceland, 127.1, 319.7
 Rhine River, 331.5, 332.3, 407.3, 407.5, 407.6, DM.1
 Rhodes, Dodecanese Islands, 77.3, 373.5
 River crossings, 319.1, 332.2, 332.3, 407.6, 407.9. *See also* Bridges
 Road construction, 77.5, 332.9. *See also* Alcan Highway
 Road maps, 77.5, 165.2, 242.5, 319.1, 319.2, 332.4, 332.6, 338.1, 395.1,
 407.6, 407.8, 407.10, DM.2, DM.3
 Roads, 77.10, 84.1, 169.3, 169.4, 234.1, 242.4, 242.6, 242.7, 319.1, 319.2,
 331.3, 331.6, 332.1, 332.2, 332.3, 332.4, 407.2, 407.6, 407.9, DM.1. *See
 also* Alcan Highway; Burma Road; Ledo Road
 Roer River, 319.1, 332.3, 407.3, 407.6, 407.7
 Romania, 43.1, 239.1, 242.5, 319.2, 331.7, 373.5
 Rota Island, Mariana Islands, 37.3
 Royal Air Force (RAF), 77.2
 Rubber, 95.1, 234.1
 Rubber Development Corporation, 234.1, 234.5
 Ruhr River, 332.3
 Russian front, 226.2, 226.3, 242.1, 242.6, 319.3, 331.1, 407.12
 Ryukyu Islands, 313.1, 373.2

 Saar River, 332.2, 332.3
 "Sad Sack," 77.9
 Saigon, Indochina, 226.4
 St. Lawrence Island, Alaska, 37.4

St. Lawrence River, 219.1
 St. Paul Harbor, Kodiak Island, 319.6
 St. Thomas, Virgin Islands, 395.1
 Saipan Mariana Islands, 37.6, 127.1, 313.1, 313.3, 373.2, 373.6, 407.10
 Sakhalin Island, U.S.S.R., 373.4
 Santerno River, 407.13
 Sardinia, 92.1, 169.3, 239.1, 242.7
 Scandinavian countries, 331.3
 Schelde estuary, 319.1
Scientific Research and Development, Office of (RG 227), 227.1
 Sea routes. *See* Shipping routes
 Seaplanes, 37.5, 177.3, 331.11
 Searchlights, 26.1, 77.3, 242.6, 373.5
 Securities and Exchange Commission, 169.3
 Senegal, 169.4, 242.10
 Sevastopol, U.S.S.R., 242.12, 319.3
 Shanghai, 289.2, 373.6
 Ship construction, 77.6, 178.1, 289.2
 Ship plans, 19.1, 26.3, 71.3, 156.1, 177.2, 336.1
 Ship plotting charts, 38.1
 Ship sinkings, 37.1, 59.2, 173.1, 457.1
 Shipping routes, 37.1, 178.1, 253.1, 457.1
Ships, Bureau of (RG 19), 19.1
 Shipwrecks, 23.1, 37.1
 Shipyards, 178.1, 243.1. *See also* Navy yards
 Shuri Line, 319.4
 Siberia, 37.1, 77.5, 165.2, 226.3, 226.4, 319.3
 Sicily, 77.4, 77.6, 165.1, 169.2, 169.3, 169.4, 239.1, 242.7, 319.2, 331.7, 407.8
 Siegfried Line, 319.1, 407.13
 Silhouettes, 331.2, 331.7
 planes, 37.5, 289.2
 ships, 289.2
 Singapore, 319.4
 Site plans, 38.1, 45.1, 71.2, 77.8, 92.3, 112.2, 127.1, 177.1, 187.1, 196.2, 210.1, 234.1, 234.2, 253.1, 331.5
 Situation maps, 77.3, 127.1, 165.1, 165.2, 226.2, 242.4, 242.6, 242.8, 331.1, 331.8, 332.2, 332.7, 407.4
 Sketch maps, 37.3, 127.1, 319.2, 331.8, 332.8, 407.12
 Sketches, 169.3, 234.1, 319.1, 319.4, 319.6, 331.7, 407.2, 407.5
 Solomon Islands, 37.3. 92.1, 127.1, 313.1, 313.3, 331.8, 373.2, 373.6, 407.10
 Sonic equipment, 19.1
 Sound ranging charts, 37.1
 South Africa, 242.9
 South America, 37.1, 37.4, 234.1, 253.1
 South China Sea, 37.5, 313.2

South Manchuria Railway Company, 169.5, 242.8
 Southeast Asia, 77.3, 319.4
 Southeast Asia Command (SEAC), 319.4
 Southwest Pacific, 18.1, 37.2, 37.3, 37.6, 77.5, 77.6, 77.9, 173.1, 239.1, 324.2, 331.8, 332.6
 Southwest Pacific Area, (SWPA), 331.1, 331.8, 331.9, 331.11
 "Southwest Pacific Newsmag," 331.9
 Soviet maps. *See* Foreign maps and charts, Soviet
 Spa, Belgium, 332.2
 Spain, 18.2, 18.3, 59.2, 77.9, 242.9
 Spanish maps. *See* Foreign maps and charts, Spanish
 Special Photo Intelligence Reports, 18.2
 Star-finding device, 37.5
Stars and Stripes, DM.2
State, Department of (RG 59, RG 84), 59.1-59.2, 84.1
 Station de Sened, Tunisia, 407.8
 Statistical charts, 187.1
 Stereoscopes, 23.4
 Stereoscopic views, 18.4, 242.13
Strategic Bombing Survey, U.S. (RG 243), 243.1
 "Strategic Engineering Studies" (SES), 77.4, 169.2
 Strategic maps, 37.3, 77.1, 165.2, 242.6
 Strategic resources. *See* Natural resources
Strategic Services, Office of (OSS) (RG 226), 77.6, 226.1-226.5, 260.1
 Subic Bay, Philippines, 331.8
 Submarines, 37.1, 37.3, 38.1, 173.1, 242.9, 313.2, 457.1
 Sudan, 242.10
 Suez Canal, 242.9
 Sullivan, Col. Alan P., DM.1
 Sumatra, 169.2, 169.4, 242.8, 332.8
 Supply routes, 77.5, 226.3, 226.4, 319.2, 331.1, 332.6, 332.8
 Supreme Commander for the Allied Powers (SCAP), 331.10, 331.11
 Supreme Headquarters, Allied Expeditionary Force (SHAEF), 77.11, 331.1-331.6, 331.11
Surgeon General, (Army), Office of the (RG 112), 112.1-112.2
 Survey equipment, 23.4
 Sweden, 18.2, 242.9, 331.3
 Syria, 242.10

 Tactical maps, 242.4, 242.6, 319.4, 395.1, 407.6, 407.9, DM.1
 Taiwan. *See* Formosa
 Tanimbar Island, Moluccas, 331.8
 Tanks, 156.1
 Tarawa, Gilbert Islands, 373.2, 373.6
 Target charts, 18.2, 37.3, 37.4, 77.3. *See also* Bombing targets
 Target dossiers, 242.10

Telephone circuits, 111.1, 173.1
Terrain, 77.4, 165.2, 169.2, 169.4, 226.1, 313.1, 319.5, 331.6, 331.8, 331.10,
332.5, 332.8, 395.1, 407.2, 407.6, 407.9. *See also* Topographic maps
Territories, U.S. Committee on, 324.2
Texas, 253.1
Thailand, 332.6, 332.7, 332.8
Theaters of War, U.S., World War II (RG 332), 332.1-332.9
Tides, 332.1
Tinian, Mariana Islands, 313.1, 373.2, 373.6
Tokyo, Japan, 37.3, 338.1, 373.6,
Topographic maps, 23.1, 57.1, 77.1, 77.2, 77.7, 196.2, 242.2, 242.5, 242.7,
319.1, 319.2, DM.1, DM.2. *See also* Terrain
Torpedoes, 227.1,
Trade reports, 59.1
Trade routes. *See* Shipping routes
Traffic patterns, 66.2, 319.4, 331.2, 332.1, 407.2, 407.6
Training camps, 187.1
 Army, 319.2, 337.1, DM.2
 Marine Corps, 127.1
 Naval, 45.1, 71.1, 71.2
Training materials, 37.5, 160.2
Trans-Jordan, 226.4, 242.10
Transport ships, 336.1
Transportation (Army), Office of the Chief of (RG 336), 336.1
Transportation facilities, 59.1, 77.5, 169.3, 226.3, 260.1, 289.1, 319.2, 331.1,
331.5, 332.1, 332.6, 373.5
Transportation routes, 59.1, 77.1, 77.5, 165.2, 169.1, 169.3, 187.1, 219.1,
226.1, 226.3, 226.4, 242.6, 242.8, 253.1, 332.1, 332.4, 332.6, 373.3, 407.5,
407.6, 407.8
Treasury Island, 127.1
Trinidad. 92.1
Troop deployment, 242.5, 242.12, 319.2, 319.7, 331.3, 331.5, 332.4, 332.5,
332.9, 338.1, 395.1, 407.9. *See also* Order of Battle maps; Situation maps
Truk, Caroline Islands, 373.2, 373.6
Tunisia, 18.2, 37.6, 77.3, 77.6, 92.1, 226.2, 242.7, 242.10, 242.13, 319.2,
331.7, 373.5, 407.8
Turkey, 18.2, 59.2, 77.5, 242.6, 242.9

Ukraine, 373.3
Underwater obstacles, 331.11, 332.1
U.S.S.R., 18.2, 23.3, 43.1, 59.1, 59.2, 77.5, 77.6, 77.9, 169.1, 226.3, 226.4,
242.2, 242.6, 242.9, 242.11, 242.12, 319.2, 319.3, 332.6, 332.7, 373.3,
373.4. *See also* Russian front
Upper Air Pilot charts, 37.4
Utah, 210.1
Utah Beach, 319.1, 331.2, 332.1, 407.2

Vectographs, 18.4
Vegetation, 59.1, 165.2, 226.1, 234.1
Veterans, 196.1, DM.1
Virgin Islands, 23.1, 395.1
Virginia, 66.1, 77.11, 112.1, 156.1, 215.1, 338.2, 373.1, 391.1
Volcano Islands, 77.4

Wake Island, 37.6, 289.2, 313.1, 373.2, 373.6
Wales, 242.3, 242.13
War Department buildings, 66.1
War Department General and Special Staffs (RG 165), 165.1-165.2
War Department Historical Program, 319.7
War Department Map Collection (WDMC), 77.1, 77.2
War Food Administration (RG 224), 224.1
"War Names in the News," 324.2
War Production Board (RG 179), 179.1
War Relocation Authority (RG 210), 210.1-210.2
War room maps, 18.1, 331.1, 331.7
Washington, 23.3
Water resources, 77.6
Water temperatures, 37.1
Watertown Arsenal, MA, 156.2
Watervliet Arsenal, NY, 156.2
Waterways, 59.2, 226.1, 234.1, 331.6, 332.1, 407.7
Weapons of World War II, G.M. Barnes, 156.1
Weather plotting charts, 18.3
West Indies, 37.1, 37.2, 37.4, 37.6, 71.1, 71.2
Western Hemisphere, 18.1, 18.2
Wind chill temperatures, 92.2
Work Projects Administration, 59.2
World aeronautical charts (WAC), 18.1, 77.10
"World News of the Week," 160.1
World War II History of the Coast Geodetic Survey, 23.3
Wurzburg, Germany, 373.5
Wyoming, 210.1

Xanten bridge, 332.3

Yap, Caroline Islands, 373.2
Yards and Docks, Bureau of (RG 71), 71.1-71.3
Yugoslavia, 43.1, 77.3, 77.6, 92.1, 169.2, 226.3, 239.1, 242.5, 242.10, 319.2,
331.7
Yunnan Province, China, 332.8