

National Firefighter Registry (NFR) for Cancer

Protocol

Division of Field Studies and Engineering (DFSE)

National Institute for Occupational Safety and Health (NIOSH)

Centers for Disease Control and Prevention (CDC)

Version: 8/2/2024

Revised with changes in response to the NFR Subcommittee discussion on 06/13/2024 and with an updated personnel description, participant user profile, and protocol language for consistency with other documents.

Revision approved by DFSE on 8/2/2024

DISCLAIMERS:

Mention of any company or product does not constitute endorsement by the National Institute for Occupational Safety and Health (NIOSH), Centers for Disease Control and Prevention (CDC).

This information is distributed solely for the purpose of pre dissemination peer review under applicable information quality guidelines. It has not been formally disseminated by NIOSH, CDC. It does not represent and should not be construed to represent any agency determination or policy.

TABLE OF CONTENTS:

SUMMARY

I. PERSONNEL AND RESOURCES

- A. Key Personnel

II. PURPOSE

III. BACKGROUND

- A. Exposure studies
- B. Epidemiological studies
- C. Knowledge Gaps
- D. Firefighter Cancer Registry Act of 2018
- E. Rationale

IV. PROPOSED APPROACH

- A. Participant Population
- B. Stakeholder Participation and Advisory Committee
- C. Objectives

V. DATA MANAGEMENT AND ANALYSIS

- A. Data Security
- B. Data Analysis
- C. Potential Limitations and Considerations

VI. HUMAN SUBJECTS PROTECTIONS

- A. Surveillance and Research Activities
- B. Informed Consent
- C. The Reasonable Person Standard
- D. Confidentiality

VII. STUDY RISKS AND BENEFITS

- A. Assessment of Potential Benefits
- B. Assessment of Potential Risks
- C. Description of Measures Taken to Minimize Potential Risks
- D. Vulnerable populations
- E. Risk versus Benefit Evaluation

VIII. FUNDING

REFERENCES

APPENDICES

- Appendix A – NFR Design Flowcharts
- Appendix B – NFR Promotional Campaign
- Appendix C – List of Stakeholders
- Appendix D – Informed Consent Document
- Appendix E – User Profile Questions
- Appendix F – Enrollment Questionnaire
- Appendix G – Assurance of Confidentiality

ACRONYMS

AoC	Assurance of Confidentiality
BLS	Bureau of Labor Statistics
BSC	Board of Scientific Counselors
CDC	Centers for Disease Control and Prevention
DNA	Deoxyribonucleic acid
DUA	Data use agreement
FRs	Flame retardants
HCN	Hydrogen cyanide
IABPFF	International Association of Black Professional Fire Fighters
IAFC	International Association of Fire Chiefs
IAFF	International Association of Fire Fighters
IAWF	International Association of Wildland Fire
IARC	International Agency for Research on Cancer
IIF	Information in Identifiable Form
IRB	Institutional Review Board
LTAS	Life Table Analysis System
MFA	Multi-factored authentication
NAACCR	North American Association of Central Cancer Registries
NDI	National Death Index
NFORS	National Fire Operations Reporting System
NFPA	National Fire Protection Association
NFR	National Firefighter Registry for Cancer
NIOSH	National Institute for Occupational Safety and Health
NIST	National Institute of Standards and Technology
NVFC	National Volunteer Fire Council
OMB	Office of Management and Budget
PAH	Polycyclic aromatic hydrocarbons
PCB	Polychlorinated biphenyls
PPE	Personal protective equipment
RFI	Request for information
SEER	Surveillance, Epidemiology, and End Results
SIRs	Standardized Incidence Ratios
SMR	Standardized mortality ratio
STEL	Short term exposure limits
TDE	Transparent Data Encryption
UUID	Universally unique identifier
VOC	Volatile organic compounds
VPR-CLS	Virtual Pooled Registry Cancer Linkage System
USFA	United States Fire Administration

SUMMARY

Cancer risk in the U.S. fire service is a topic of growing concern, and firefighters' occupational exposure to hazardous contaminants is thought to play an important role in their excess cancer risk. Dozens of chemicals classified by the International Agency for Research on Cancer (IARC) as known or probable carcinogens (IARC, 2010; IARC, 2020) have been identified on the fireground. Polycyclic aromatic hydrocarbons (PAH) metabolites, some of which are classified as known or probable carcinogens by IARC, have been identified in firefighters' urine after fire responses (Fent et al., 2014).

Epidemiologic evidence from recent studies suggests firefighters have an increased risk for cancer. Specifically, a meta-analysis conducted by LeMasters et al. in 2006 found firefighters have an increased risk for several types of cancer (LeMasters et al., 2006). In 2022, IARC classified firefighters' occupational exposure as known to be carcinogenic (Group 1) (Demers et al. 2022). In 2014, Daniels et al. conducted a study with nearly 30,000 firefighters and found 9% more cancer diagnoses than expected based on rates in the general population (Daniels et al., 2014). An additional analysis found an exposure-response relationship between fire-runs and leukemia, and fire hours and lung cancer (Daniels et al., 2015).

More information is needed to assess the cancer risk for minority and female firefighters. Minority firefighters make up roughly 20% of the career workforce (BLS, 2019), and roughly 8% of all firefighters are women (NFPA, 2018). While there is evidence to suggest that minority and female firefighters have an increased risk for some cancers (Daniels et al., 2014; Tsai et al., 2015; Lee et al., 2020), most studies have lacked sufficient power to examine cancer risk for these populations.

Few studies have examined the potential cancer risk for volunteer firefighters, who comprise a majority of the U.S. fire service, as well as subspecialty groups like wildland firefighters, fire investigators, and instructors. Similarly, while nearly half of U.S. fire departments serve rural populations (NFPA, 2018), cancer risk has yet to be evaluated for most firefighters serving rural areas. More information on lifestyle characteristics is needed to better understand the relationship between firefighting and cancer. More comprehensive information on exposure characteristics like fire incidents (e.g., number of fire runs, time spent on fireground) and control measures (e.g. consistent use of respiratory protection, decontamination measures, etc.) and how they relate to cancer would allow for better informed public health decisions relating to efforts to reduce cancer incidence in the U.S. fire service.

In order to accurately monitor trends in cancer incidence and evaluate control measures among the U.S. fire service, Congress passed the Firefighter Cancer Registry Act of 2018. Under this legislation, the U.S. Centers for Disease Control and Prevention's (CDC) National Institute for Occupational Safety

and Health (NIOSH) was directed to create a registry of U.S. firefighters for the purpose of monitoring cancer incidence and risk factors among the current U.S. fire service. Funding of the project was authorized through this legislation for five years as of fiscal year 2019.

The main goal of the National Firefighter Registry (NFR) for Cancer, according to the Firefighter Cancer Registry Act of 2018, is “to develop and maintain...a voluntary registry of firefighters to collect relevant health and occupational information of such firefighters for purposes of determining cancer incidence.” Results from the NFR for Cancer will provide information for decision makers within the fire service and medical or public health community to devise and implement policies and procedures to lessen cancer risk and/or improve early detection of cancer among firefighters. This goal aligns with public health surveillance. Below, we have identified the primary surveillance activities necessary to achieve this goal:

1. Collect self-reported information from firefighters on employment/workplace characteristics, exposure, demographics, lifestyle factors, co-morbidities, and other confounders related to cancer.
2. Obtain records from fire departments/agencies for firefighters who consent to participate in the NFR to track trends and patterns of exposure as it relates to cancer in firefighters.
3. Monitor cancer in firefighters by linking with health information databases (e.g., population-based cancer registries and the National Death Index (NDI)) to assess cancer incidence and mortality.

I. PERSONNEL AND RESOURCES

A. Key Personnel

The development, analysis, and maintenance of the National Firefighter Registry (NFR) for Cancer involves a multi-disciplinary NIOSH team of industrial hygienists, epidemiologists, health scientists, statisticians, data scientists, health communication experts, and fire service subject matter experts. Additional contributors include contractors, guest researchers, and members of the National Firefighter Registry Subcommittee. Members of the fire service, research, and medical communities additionally contribute input on and collaborate with the NFR. NIOSH management and staff working on the NFR can be reached by emailing NFRRegistry@cdc.gov.

II. PURPOSE

The purpose of the NFR for Cancer is to evaluate and monitor cancer rates and risk factors in the current U.S. fire service. With voluntary participation from firefighters, the NFR will obtain information about work and exposure history, demographics, co-morbidities, and lifestyle factors. This information will be linked with records from population-based, or state, cancer registries to monitor cancer diagnoses

and improve our knowledge about cancer risks for firefighters, especially those linked to workplace exposures. Special emphasis will be given to recruit a large sample that is diverse by geography, sex, race/ethnicity, career status, and firefighter specialization.

III. BACKGROUND

A. Exposure studies

Structural firefighters are occupationally exposed to a number of hazardous chemicals during emergency fire responses. Chemicals found on the fireground include PAHs like benzo[a]pyrene and dibenz[a,h]anthracene, volatile organic compounds (VOCs) like benzene, chlorinated and brominated dioxins and furans, flame retardants (FRs), formaldehyde, and hydrogen cyanide (HCN), and respirable particulates (Bolstad-Johnson et al., 2000; Fent et al., 2018; Fent et al., 2019a; Jankovic et al., 1991). Over a dozen of these chemicals are listed by IARC as Group 1, known carcinogens to humans, including benzene, benzo[a]pyrene, formaldehyde, and PCBs, while other chemicals are listed as Group 2A, probably carcinogenic to humans, such as dibenz[a,h]anthracene (IARC, 2010; IARC, 2020).

PAHs are produced during incomplete combustion and have been associated with certain types of cancer (Dreij, 2017). Several studies (Fent et al., 2017; Fent et al., 2014; Kirk and Logan, 2015; Stec et al., 2018) have found structural firefighters are occupationally exposed to PAHs, including a study by Fent et al. in 2014 where PAH metabolites were identified in firefighters' urine post firefighting. In addition, studies have found phthalates, PAHs, and FRs on firefighters' personal protective equipment (PPE) after fire responses (Alexander and Baxter, 2016; Easter et al., 2016; Fent et al., 2014). These contaminants could also be transferred to skin and dermally absorbed, inhaled, or inadvertently ingested.

By comparison, fewer studies have evaluated exposures in subspecialty groups of firefighters. Of note, a study by Fent et al. examined firefighter instructors supervising three trainings per day and found PAH metabolite concentrations increased after each training (Fent et al., 2019b). Some studies have examined wildland firefighters' exposures, including a study reporting carbon monoxide air exposure that exceeded short term exposure limits (STEL) (Adetona et al., 2013). Another study investigated prescribed burns and identified increased PAH metabolite concentrations in urine collected from wildland firefighters post-fire (Adetona et al., 2017). Workloads, work schedules, and environments also vary substantially by firefighting subspecialty, impacting the frequency and duration of exposures. Indeed, firefighters' occupational exposures to contaminants are thought to play an important role in their cancer risk.

B. Epidemiological studies

Early epidemiological studies on the association between firefighting and cancer mortality in the U.S. often evaluated only a single municipal fire department or a collection of a few regionally-linked departments (Baris et al., 2001; Beaumont et al., 1991; Demers et al., 1992; Lewis et al., 1982; Musk et al., 1978; Vena et al., 1987). Findings from these individual studies were somewhat inconsistent, with moderately weak measures of association and some variability in the cancers found to be elevated. These studies were limited by relatively small sample sizes, short periods of follow-up, and geographic variation across samples.

Several studies have been published in recent years that have evaluated cancer among larger, more diverse samples of firefighters. In the U.S., Daniels et al. (2014) conducted a retrospective cohort study of nearly 30,000 firefighters employed in Philadelphia, Chicago, and San Francisco between 1950–2009 and found 14% more cancer deaths and 9% more cancer diagnoses than expected based on rates in the general population. These increases were primarily due to digestive (esophagus, intestine, colon/rectum), respiratory (lung, mesothelioma), urinary (kidney, bladder), and oral (buccal and pharynx) cancers. There was some evidence for elevated prostate cancer and leukemia among non-white firefighters and breast and bladder cancer among female firefighters, but sample sizes were small, or estimates were not statistically significant for these groups. A mortality update of the cohort published in 2020 found additional evidence for elevated mortality due to non-Hodgkin's lymphoma overall (Pinkerton et al., 2020). A recent large case-control study of approximately 4,000 California firefighters found elevated odds of melanoma, multiple myeloma, leukemia, and cancers of the esophagus, prostate, brain, and kidney overall (Tsai et al., 2015); and non-Hodgkin's lymphoma and cancers of the tongue, testes, and bladder were found to be associated with firefighting among small samples of non-white firefighters. A recent mortality study of Indiana firefighters found excess deaths due to malignant cancers, including oral, pancreatic, kidney, connective tissue, and nervous system cancers (Muegge et al., 2018). In Florida, a study published in 2020 found firefighting to be associated with melanoma and cancers of the prostate, testes, thyroid, and colon in men; and cancers of the thyroid and brain in women (Lee et al., 2020). Large international studies generally support the finding from U.S. studies that firefighters have elevated rates of cancer, with some variation by cancer site (Ahn et al., 2012; Amadeo et al., 2015; Glass et al., 2016b; Glass et al., 2017; Glass et al., 2019; Harris et al., 2018; Petersen et al., 2018a; b; Pukkala et al., 2014).

Recent meta-analyses have pooled findings from individual epidemiological studies on cancer mortality and incidence in U.S. and international firefighting populations (LeMasters et al., 2006; Guidotti et al., 2007; IARC, 2010; Sritharan et al., 2017; Jalilian et al., 2019; Soteriades, et al., 2019; Casjens et al., 2020). These meta-analyses identified cancers that appeared to be elevated based on a

weight of the evidence, including testicular (Lemasters et al., 2006; Guidotti et al., 2007; IARC, 2010; Jalilian et al., 2019; Soteriades, et al., 2019; Casjens et al., 2020), prostate (Lemasters et al., 2006; Guidotti et al., 2007; IARC, 2010; Jalilian et al., 2019; Sritharan et al., 2017; Soteriades, et al., 2019; Casjens et al., 2020), bladder (Guidotti et al., 2007; Jalilian et al., 2019; Soteriades, et al., 2019; Casjens et al., 2020), colorectal (Jalilian et al., 2019; Soteriades, et al., 2019; Casjens et al., 2020), lymphohematopoietic (e.g., non-Hodgkin lymphoma, multiple myeloma) (Lemasters et al., 2006; Guidotti et al., 2007; IARC, 2010; Jalilian et al., 2019; Sritharan et al., 2017; Soteriades, et al., 2019), central nervous system (Soteriades, et al., 2019), thyroid (Jalilian et al., 2019), pancreatic (Casjens et al., 2020), and pleural cancers (Jalilian et al., 2019; Casjens et al., 2020), and melanoma (Jalilian et al., 2019; Soteriades, et al., 2019; Casjens et al., 2020). As a result of the 2010 meta-analysis conducted by IARC, the agency classified firefighting to be possibly carcinogenic to humans (Group 2B) based on evidence available at that time (IARC, 2010). However, in 2022, IARC reevaluated the classification of firefighting based on updated literature and determined that there is now sufficient evidence that firefighting is a known carcinogen to humans (Group 1); and a full report and literature review is forthcoming (Demers et al., 2022).

Few studies have evaluated potential exposure-response relationships. Of these studies, some surrogates of exposure have included duration of employment/firefighting (Aronson et al., 1994; Baris et al., 2001; Bates et al., 2001; Beaumont et al., 1991; Demers et al., 1994; Guidotti et al., 1993; Heyer et al., 1990; Tornling et al., 1994; Vena et al., 1987), number of fire runs (Baris et al., 2001; Daniels et al., 2015; Tornling et al., 1994), and number of hours spent at fires (Daniels et al., 2015). Cancers that were found to be significantly elevated with increasing exposure in these studies included testicular (Bates et al., 2001), prostate (Demers et al., 1994), and lung cancers, and leukemia (Daniels et al., 2015).

The research on cancer for subspecialty groups of firefighters is limited, but a recent study of fire instructors (paid and volunteer) in Australia found an exposure-response relationship between training exposures (based on job activities) and cancer incidence (Glass et al., 2016a). To examine cancer risk for wildland firefighters, Navarro et al. (2019) conducted a risk assessment using an exposure-response relationship for risk of lung cancer mortality and measured particulate matter exposure from smoke at wildfires. This study estimated that wildland firefighters were at an increased risk of lung cancer mortality (8 to 43 percent) across different exposure scenarios and career durations.

In addition to epidemiological studies, mechanistic studies have used biomarkers to investigate exposures' effects on biological changes that could be related to cancer development. These studies provide evidence of DNA damage, oxidative stress, and epigenetic changes related to firefighter

exposures (Abreu et al., 2017; Adetona et al., 2017; Andersen et al., 2017; Hoppe-Jones et al., 2018; Jeong et al., 2018; Keir et al., 2017; Oliveira et al., 2018; Zhou et al. 2019).

C. Knowledge Gaps

Exposure research supports that firefighters are exposed to hundreds of chemicals at fires, many of which are known or probable carcinogens (IARC, 2010; IARC, 2020). Epidemiologic evidence suggests that firefighters are at an increased risk for cancer. There is some variation in the literature on the risk of cancer by cancer site, which could be due to chance findings or differences in exposures, workplace practices, and PPE use by geographic region; firefighter characteristics; and time (Fritschi et al., 2014; Casjens et al., 2020). Many details about the risk of cancer among the fire service are still poorly understood.

While there is some possible evidence to suggest that non-white or minority and female firefighters have an increased risk of specific cancers (Daniels et al., 2014; Tsai et al., 2015), analyses of demographic subgroups have been underpowered because study samples have consisted of predominantly white male populations. Roughly 20% of career firefighters are non-white or minorities, approximately 8% of all firefighters are women, and select subspecialty groups of firefighters may be even more diverse (BLS, 2019; NFPA, 2018). Therefore, findings are not necessarily generalizable to the entire workforce unless samples sufficiently represent these demographics. Furthermore, in the general population, cancer rates vary by demographic characteristics, including sex and race/ethnicity (Howlader et al., 2019), as do cancer risk factors (Ellis et al., 2018), and biological mechanisms for metabolism of substances and/or the development of cancer (Wiencke et al., 2004; Zahm et al., 1995). But little is known about how cancer risk differs across varying demographic groups of firefighters. Additionally, larger samples of female firefighters are needed to estimate specific cancer incidence among women in the fire service.

Studies support that workplace activities, practices, and exposures can vary based on firefighting specialization (Broyles, 2013; Fritschi et al., 2014; Glass et al., 2016a), but most epidemiologic studies have evaluated cancer risk only among groups of career structural firefighters. More information is needed on cancer rates and risk factors for volunteers, wildland and airport rescue firefighters, fire investigators, instructors, and others. Similarly, while nearly half of U.S. fire departments serve rural populations of less than 2,500 people (NFPA, 2018), cancer risk has yet to be evaluated for firefighters serving rural areas.

More accurate information on exposure characteristics like fire incidents (e.g., number of fire runs, time spent on fireground) and control measures (e.g. consistent use of respiratory protection, hood

exchange programs, etc.) and how they relate to cancer incidence in the U.S. fire service is needed. It is also important to consider personal and lifestyle risk factors for cancer, such as tobacco and alcohol use, sleep deprivation, diet, and physical activity, in order to better understand how they may affect the relationship between firefighting and cancer; especially because the effects of these personal risk factors on cancer risk appear to be larger than the individual effects of firefighting and firefighting exposures that have been observed (Daniels et al., 2015; IARC, 2012; Schottenfeld et al., 2006). Likewise, information on the use of PPE and workplace practices is necessary to obtain a more comprehensive understanding of cancer risk associated with firefighting as an occupation. Lastly, it is important to collect health information from firefighters because comorbidities (e.g., diabetes) and associated health behaviors may increase or mediate the risk of certain types of cancer.

Some population-based (i.e., state) cancer registries collect occupational information, but it is often vague and incomplete (Silver, et al. 2018; Freeman, et al. 2017) because patient information related to work history is often not obtained in the healthcare setting. Among firefighters specifically, one study found that roughly half of career firefighters in Florida with a cancer diagnosis were missing an occupation classification in the cancer registry, and only 17% were classified as a firefighter in the cancer registry (McClure et al., 2019). This estimate would likely be much smaller for former or retired firefighters, or volunteers working a non-firefighting job, at the time of cancer diagnosis, since the extent of occupational information ascertained may relate only to current job. Cancer rates among firefighters calculated using occupational information available from cancer registries may even differ from those calculated using fire service records (McClure, et al. 2021). Therefore, there is not enough accurate information available from state cancer registries alone to produce comprehensive estimates of cancer burden and risk factors among the fire service nationally.

D. Firefighter Cancer Registry Act of 2018

The President of the United States signed the Firefighter Cancer Registry Act of 2018 in July 2018, authorizing the Secretary of Health and Human Services to develop a voluntary registry to collect data on cancer incidence among firefighters (Congress, 2018). This law charged NIOSH—through CDC’s Director—to create the National Firefighter Registry (NFR) for Cancer.

Specifically, NIOSH is required to “improve data collection and data coordination activities related to the nationwide monitoring of the incidence of cancer among firefighters” and “to collect, consolidate, and maintain, epidemiological information and analyses related to cancer incidence and trends among volunteer, paid-on-call and career firefighters”. The law also requires NIOSH to “generate a statistically reliable representation of minority, female, and volunteer firefighters” and requires NIOSH “consult

with non-Federal experts on the Firefighter Registry”. Lastly, NIOSH is responsible for developing a “reliable and standardized method for estimating the number of fire incidents attended by a firefighter as well as the type of fire incident”.

E. Rationale

There are over 1.1 million firefighters currently serving in the United States (NFPA, 2018). Though roughly 20% of the firefighting workforce are racial/ethnic minorities, 8% are women, and 67% are volunteers (BLS, 2019; NFPA, 2018), these subgroups have been understudied in relation to cancer risk. In order to obtain a diverse sample of U.S. firefighters to accurately assess cancer incidence, NIOSH investigators will seek to enroll firefighters at fire departments with higher numbers of female and minority firefighters from all regions of the country. In addition, NIOSH will encourage participation from subspecialty groups of firefighters including but not limited to wildland firefighters, fire investigators, and fire instructors. Overall, the NFR will seek to register approximately 200,000 firefighters in an effort to capture a more generalizable sample of the workforce.

This would be the largest database of firefighters ever assembled for health purposes and would allow NIOSH investigators to monitor cancer incidence in the U.S. fire service. Specifically, this sample size may enable investigators to monitor firefighters for rare types of cancer not previously identified in this workforce. Additionally, previous studies like Daniels et al. (2015) examined firefighters’ cancer risk based on exposures to burning of older structures (1950-2009). Through the NFR, NIOSH investigators can examine cancer risk among firefighters who may have different exposures, such as those experienced from the burning of synthetic materials present in newer structures. By aiming for a diverse sample with representation from subgroups specified in the Act (i.e., women, minorities, and volunteers), investigators can be more confident that results will better inform public health action.

IV. PROPOSED APPROACH

A. Participant Population

The NFR will be a surveillance system of adult (≥ 18 years of age) U.S. firefighters designed to evaluate cancer rates and occupational risk factors in the current U.S. firefighting workforce. The goal is to achieve a total NFR sample (i.e., General NFR Sample) of close to 200,000 participants 5 years after beginning enrollment that is diverse demographically (gender, race, etc.), geographically, and by firefighting specialization (investigation, wildland firefighting, etc.) and type of firefighter (career, volunteer, paid-on call, etc.). There will be no exclusion or inclusion criteria based on cancer or health status. There will be two components of the comprehensive General NFR Sample: a subsample

comprised of a **Targeted Cohort** for assessing cancer incidence; and a more-inclusive **Open Cohort** for describing cancer risk factors and other cross-sectional analyses (Appendix A). Specific inclusion criteria and sampling/recruitment strategies for each NFR component are outlined below.

1. Targeted Cohort

The Targeted Cohort will provide the population at risk required for assessing cancer incidence by targeting a sample of firefighters from career and volunteer fire departments that is diverse by geographic, demographic, and occupational characteristics, and following their vital and cancer status. The Targeted Cohort will be a prospective dynamic cohort (continuous enrollment). Firefighters in the Targeted Cohort will be recruited from two sampling frames: selected departments and state agencies maintaining certificates or records of individuals participating in firefighting activities. Eligible participants will be all current firefighters from selected departments or states with rosters of firefighters. These eligible fire personnel will be invited by NIOSH via fire department leadership to participate in the NFR. Additionally, departments with high participation from the Open Cohort (e.g., $\geq 70\%$ of the department's fire personnel) might also be added to the Targeted Cohort, as described below in the *Open Cohort* section. If individuals decline to participate or do not respond to our request, their information will not be used for NFR analyses.

The Targeted Cohort will be important for several reasons, including: 1) this approach will limit selection/participation bias with specific eligibility criteria and a sampling design; 2) quality exposure information can be obtained from department records; 3) the design provides a defined population at risk for estimating cancer incidence rates; and, 4) department workforce information allows for the assessment of NFR response characteristics and potential biases of the Open Cohort.

A. Targeted Cohort: Selected Fire Departments

Fire departments selected for targeted recruitment will be contacted to identify a primary point of contact for all NFR-related matters. The NIOSH team will then request rosters or aggregate roster information on the current firefighting workforce (i.e., employed at the time of NIOSH's roster solicitation) for these departments and will rely on department leadership to disseminate information to their rosters. These rosters will provide the total number of current fire personnel and information necessary for contacting firefighters with invitations to voluntarily enroll and for tracking consent and participation (e.g., name, fire department, active status, email address, phone number, residential address). NIOSH investigators will also request support in individual firefighter recruitment from department and state leadership and from the local union/memberships (if applicable). Fire departments

may be unable or decline to participate, in which case, NIOSH will reach out to other departments with similar characteristics by using the same means of selection or from the same sampling stratum. For those departments that agree to participate, NIOSH investigators will provide informational and promotional materials (directly and through the department/union) to encourage all eligible firefighters to enroll through the NFR web portal. See Appendix B for more information on recruiting materials. Additionally, NIOSH may request incident records from departments for firefighters who consent to participate in the NFR, dating back to at least January 1, 2010, and preferably older, as discussed under *Objective 2*, for ascertaining incident-specific exposure information. Updated roster information and incident records will be requested on a recurring basis (e.g., every two years) to recruit firefighters new to the department and to update incident information. Departments that are unwilling or unable to provide incident records might still be included in the Targeted Cohort, however, NIOSH may recruit additional or alternate departments with similar characteristics (i.e., from the same phase/strata), or rely on other sources of incident information, in order to obtain adequate rosters with incident records for the Targeted Cohort. All new firefighters identified in rosters at participating departments (e.g., every two or three years) will be actively invited to participate in NFR enrollment (firefighters can also enroll themselves through the web portal before then) until a sufficient number of firefighters are enrolled to provide statistical power to detect meaningful differences in risk estimates according to the sample size calculation (see *Sample Size Calculation (Targeted Cohort)*).

i. Example Fire Department Sampling Strategy

Below is an example fire department sampling strategy that could produce a robust sample of firefighters to allow for detailed analyses of subgroups and less common cancers (although the implemented sampling plan is subject to change based on feasibility and participation rates). Targeted career and volunteer departments may be selected in two sampling phases. Phase 1 may include recruitment from departments with high numbers of female, minority, and volunteer firefighters, to ensure adequate sample size for analysis. Fire departments with large numbers of female and minority firefighters will generally be those with a large overall workforce, thus these departments will also contribute large numbers of firefighters to the Targeted Cohort overall. Phase 2 may utilize a stratified random design to select a geographically diverse sample of career and volunteer departments from across the country, as feasible.

The fire department sampling strategy may be adjusted depending on participation from specific groups of firefighters, fire departments, and state agencies. The NFR will be designed to be flexible and accommodating in order to 1) generate a large and diverse sample to monitor cancer rates and risk

factors across the diverse fire service, and 2) adapt to changes in the workforce and needs of the fire service over time.

Phase 1: Focused Enrollment of Women, Minorities, and Volunteers:

Phase 1 will involve focused enrollment of female, minority, and volunteer firefighters (Appendix A). Departments with high numbers of female and minority firefighters, defined as the approximate number currently active with the department, will be identified by recent estimates from surveys of fire departments (e.g., NFPA census estimates) and/or conversations with relevant stakeholder groups. At least 10 departments with large numbers of female firefighters and 20 departments with large numbers of minority firefighters will be recruited, as feasible; otherwise, departments will be recruited until sufficient samples of female and minority firefighters have been obtained for the Targeted Cohort (as indicated by *Sample Size Calculations (Targeted Cohort)*).

Additionally, NIOSH will consult estimates from surveys of fire departments (e.g., NFPA census estimates) and stakeholder groups to identify a list of large volunteer/mostly volunteer departments or career departments with a large volunteer workforce from across the country (i.e., with representation in all four U.S. regions). NIOSH will randomly select approximately six of these departments from each of the four regions defined by the U.S. Census Bureau (Northeast, Midwest, South, West) to ensure geographic variability, as feasible. Otherwise, volunteer departments will be recruited from the four regions until a sample of volunteer firefighters has been obtained that is adequate for analysis (as indicated by *Sample Size Calculations (Targeted Cohort)*).

Phase 2: Stratified Random Sample:

To expand the size and generalizability of the Targeted Cohort, NIOSH may use a specified sampling strategy to recruit fire departments, as feasible. For example, NIOSH may use a three-level sampling design to sample from career/mostly career and volunteer/mostly volunteer departments across the country (Appendix A). The U.S. could be divided into nine geographic units that fall within the four US regions (Northeast, Midwest, South, West) specified by the U.S. Census Bureau (i.e., New England, Middle Atlantic, East North Central, West North Central, South Atlantic, East South Central, West South Central, Mountain, and Pacific; https://www2.census.gov/geo/pdfs/maps-data/maps/reference/us_regdiv.pdf). Using recent national estimates from fire department surveys or databases (e.g., NFPA, USFA, FireCARES), departments within each region could be stratified by career/mostly career and volunteer/mostly volunteer status. Career/mostly career departments could then be categorized according to population size served (i.e., $\geq 100,000$ vs. $< 100,000$). The population size

served for all departments can be obtained from resources on department characteristics and population data, including USFA, NFPA, FireCARES, and the U.S. Census. From each geographic region, NIOSH could first randomly select at least three career/mostly career departments with at least 100 current firefighters, for example, from each category of population size served to invite to participate (Tier 1); and then randomly select at least three volunteer/mostly volunteer departments to invite to participate (Tier 2). Volunteer departments may not be stratified by population size served since a majority serve populations of <50,000, therefore it may be difficult to find larger volunteer departments in some regions.

b. Targeted Cohort: State Agency Databases

In addition to the fire department sampling frame, NIOSH may incorporate other sampling frames for the Targeted Cohort, including state fire service agencies. A few states (e.g., Georgia, Kentucky, Ohio, etc.) require all firefighters, career and volunteer, to be certified and regularly re-certified to be active in that state. Each of these states has a governing body that keeps track of all active firefighters and their certifications. Some states maintain comprehensive or large lists of active firefighters in that state through other means of recordkeeping (e.g., through pension, retirement, workers' compensation records, etc.). NIOSH may work with or through these state agencies to obtain information on active firefighters in the state, contact firefighters with invitations to voluntarily enroll, and track participation (e.g., name, fire department, active status, email address, phone number, residential address). All new firefighters identified in state records can be contacted periodically (e.g., every two or three years) with an invitation to enroll. Additionally, some states could potentially include a link or invitation to the NFR during their initial certification/recertification process or other means of communication. Some of the state agencies may also have access to incident records. NIOSH will explore obtaining these records either from the state or from individual fire departments in the state. In most cases, however, state agencies are not anticipated to have records with the level of detail related to fire incidents that are available from individual departments.

c. Sample Size Calculation (Targeted Cohort)

A sample size calculation was used to approximate the minimum baseline sample sizes (i.e., number of currently active firefighters) necessary to detect elevated cancer rates for select subgroups of interest. The sample size calculations were based on attaining 80% power from a Poisson regression with 30 years of follow-up, comparing the observed cancer rate of the cohort to the U.S. population cancer rate with an $\alpha = 0.05$ level of significance. It was further assumed that the cohort would grow by 2.5% per

year as was calculated from the Daniels et al. (2014) study data. Population death rates and cancer incidence rates were obtained from CDC Wonder and the average of the most recent 5 years (2012-2017 for mortality and 2011-2016 for incidence) was used and assumed to remain constant into the future. Using this information, and assuming 30 years of prospective follow-up with new participants, an initial targeted cohort of 5,000 firefighters is needed to observe a standardized incidence ratio (SIR) of 1.09 for all cancer sites among a general sample of firefighters; a similar number of non-white firefighters (i.e., 6,500) is needed to observe an SIR 1.09 for all cancer sites among a sample of only non-white firefighters; and 1,000 female firefighters are needed to observe an SIR of 1.45 for breast cancer among a sample of only female firefighters. The SIRs for these calculations were obtained from the Daniels et al. (2014) study.

These sample sizes were used to determine the minimum number of departments to recruit with the fire department sampling strategy. More specifically, mean reported counts of firefighters from a recent NFPA census of U.S. fire departments were used to estimate current workforce sizes. Under an assumption of 50% participation rate, we estimate that the proposed fire department sampling strategy (Appendix A) will contribute a baseline sample of roughly 26,000 firefighters, including approximately 1,000 women, 6,500 non-white firefighters, and 5,000 volunteers, that will grow to roughly 56,000 after 30 years of follow-up by 2050 (assuming an annual growth rate of 2.5%). The number of necessary fire departments could change based on observed participation rates and participation from state agencies.

NIOSH anticipates including several state agencies' databases in the pool of potential participants for the Targeted Cohort, which would greatly increase the sample size and potentially reduce the number of individual departments necessary to recruit for the fire department sampling strategy. Hypothetically, if a state with 40,000 active firefighters provided contact information for participation in the NFR, the Targeted Cohort would increase by roughly 20,000 participants, assuming the same participation rate as above. Thus, a total Targeted Cohort of approximately 46,000 firefighters at baseline would grow to approximately 100,000 after 30 years of follow-up. Additions of departments with high participation from the Open Cohort would further increase the size of the Targeted Cohort.

With high participation from fire departments selected in the fire department sampling strategy and multiple states, the Targeted Cohort could be used to evaluate even smaller measures of effect, more subgroups of firefighters, and less common cancers, and could allow for analyses with greater statistical power with less follow-up time.

2. Open Cohort

The Open Cohort will involve a non-probability sampling design and include all firefighters that complete enrollment through the secure web portal not otherwise recruited for the Targeted Cohort. All adult members of the U.S. fire service, including active, former, and retired members, who have ever been an active firefighter will be eligible to join the NFR through this method. This will include former firefighters (e.g., retired) at fire departments selected for the Targeted Cohort. Additionally, the Open Cohort will be designed to recruit large representation from sub-specialties of firefighting, such as wildland, instructors, fire investigators, fire academy students, and airport rescue. Participants will be able to enroll on a continuous basis.

Firefighters will be recruited for the Open Cohort by disseminating informational and promotional materials through stakeholders, membership organizations, social media, and trade literature. Appendix B provides information on promotional materials. These materials will be provided to our list of stakeholders (Appendix C) for dissemination to their membership.

NIOSH investigators will deliver presentations on the NFR at professional conferences and meetings all over the United States. NIOSH will also set up booths at professional conferences where firefighters can obtain informational materials and possibly even register by using electronic tablets at the booth.

Through non-probability sampling, some firefighters may be more likely to register than others based on characteristics such as cancer status (i.e., selection/participation bias). Therefore, the Open Cohort may limit the ability of investigators to make statistical inferences related to cancer rates from this sample. Nevertheless, enrolling large numbers of NFR participants through this design will be relatively quick and cost-effective. Further, because of the broad eligibility criteria, this approach would provide the opportunity for any fire service members to participate in the NFR, including subgroups not initially eligible or selected for the Targeted Cohort. Lastly, previous cohorts of a similar design (e.g., the Women's Health Initiative Observational Study and Nurse's Health Study III) have demonstrated that the Open Cohort will have strong utility for descriptive and hypothesis-generating analyses of cancer risk factors, including those cross-sectional and prospective in design (Hays, et al. 2003; Chlebowski, et al. 2019; Bao, et al., 2016).

a. Adding Open Cohort Groups to the Targeted Cohort

NFR investigators will evaluate the opportunity for treating subgroups from the Open Cohort as part of the Targeted Cohort and/or additional department records collection based on the estimated severity of participation bias (e.g., based on cancer status) and participation rates of such subgroups (e.g., high participation from single departments, states, or organizational memberships for which denominator information is available). For example, if select departments have high participation (e.g., $\geq 70\%$ of the

department's fire personnel) in the Open Cohort and, thus, minimal participation bias based on cancer status, NFR investigators may treat this subgroup as part of the Targeted Cohort; that is, by possibly soliciting incident records and performing prospective analyses related to cancer incidence. NIOSH will determine participation rates using denominator information available from NFPA, USFA, and/or contact with individual departments/states.

b. Power/Sample Size Calculation (Open Cohort)

Previous power calculations for a cohort of a similar design to the NFR Open Cohort have shown the capability of such an approach. For example, the Women's Health Initiative Observational Study provides the opportunity for comparing characteristics between participants that have developed a given disease (e.g., cancer) with a suitable number of time-from-enrollment matched controls, i.e., using a nested case-control analysis. Power analyses demonstrate that, for example, a 1:1 matched case-control analysis based on a cohort size of 80,000 is approximately equal to a full-cohort analysis based on a cohort of size 40,000. Furthermore, in a hypothetical cohort of 40,000, investigators suggest that "an odds ratio as small as 1.50 for an exposure having a frequency of 0.50 can be detected with a probability (power) of 90% or greater by an average of 3 years of follow-up for diseases such as breast cancer... having an annual incidence of at least 0.20%. Such an odds ratio can be detected with a power of 80% for much rarer diseases having an annual incidence of 0.05% by an average of 9 years of follow-up" (The Women's Health Initiative Study Group, 1998, pg. 90–91). The NFR Open Cohort is anticipated to be much larger than 40,000.

B. Stakeholder Participation and Advisory Committee

There are many stakeholders interested in the NFR (Appendix C). NIOSH investigators have identified a list of individuals and organizations to be included in communications regarding the NFR including representatives from academic institutions, other federal agencies, fire and emergency response organizations, firefighter unions, fire departments, and cancer registry experts. Specifically, members of the International Association of Fire Fighters (IAFF), International Association of Fire Chiefs (IAFC), Firefighter Cancer Support Network, United States Fire Administration (USFA), National Fire Protection Association (NFPA), and International Association of Wildland Fire (IAWF) have expressed interest in assisting with efforts to maximize participation in the NFR. In addition, the Firefighter Cancer Registry Act of 2018 specifically mentions generating representation of female, volunteer, and minority firefighters, so NIOSH investigators have communicated with representatives

from the National Volunteer Fire Council (NVFC), Women in Fire, National Association of Hispanic Fire Fighters, and the International Association of Black Professional Fire Fighters (IABPFF).

NIOSH engages with stakeholders for the NFR through various forms of communication including periodic emails, quarterly newsletters, individual conference calls, and presentations at conferences. NIOSH investigators published a request for information (RFI) in the Federal Register and presented at meetings open to the general public including at the NIOSH Board of Scientific Counselors (BSC) bi-annual meeting and the 2019 Firefighter Cancer Symposium. Additionally, NIOSH investigators provided NFR updates to members of Congress and will continue to do so annually. Through these mechanisms, stakeholders were able to express opinions and share insights in both public and private forums, and their perspectives were instrumental during the development of the protocol. NIOSH investigators will continue to provide opportunities for stakeholder feedback at upcoming conferences.

Additionally, the NFR team will continue holding conference calls with important stakeholder groups, such as IAWF and IAFF, to discuss recruitment strategies and disseminate promotional materials being developed as part of a promotional campaign for the NFR. This campaign will include a social media plan and digital advertisements to reach firefighters through CDC and NIOSH social media channels and leverage relationships with stakeholders such as unions and affinity groups that will share information and materials on behalf of the NFR team. The NFR team is using firefighter focus groups to inform the development of this promotional campaign. NIOSH investigators also created an email address (NFRregistry@cdc.gov) solely dedicated to answering questions regarding the NFR. Through a subcommittee of the NIOSH BSC, NIOSH created the NFR Subcommittee—an advisory committee for the NFR. The NFR Subcommittee, as outlined in the Firefighter Cancer Registry Act of 2018, is comprised of non-federal experts in related fields including cancer registries, cancer epidemiology, clinicians with expertise in cancer or firefighter health, fire and emergency response organizations, active firefighters, state health departments, and state departments of homeland security. The NFR Subcommittee will provide guidance on the design, implementation, and reporting for the NFR and meet at least once a year.

The results from our study will be communicated to stakeholders via scientific journal publications, presentations, and communications to the public.

C. Objectives

Objective 1: Enroll firefighters and collect self-reported information on employment/workplace characteristics, exposure, demographics, lifestyle factors, co-morbidities, and other confounders related to cancer.

NIOSH will develop a secure web portal that allows any firefighter in the nation to self-register. All firefighters participating in the NFR will enroll through the web portal. The web portal will meet all requirements of the Federal Information Security Management Act of 2002 (FISMA). Firefighters will access the web portal through the dedicated NFR website (www.cdc.gov/NFR). This website will include frequently asked questions (FAQs) and other important background information about the NFR. After reviewing the NFR website, if firefighters are interested in enrolling in the NFR, they will click the “REGISTER” icon. This will take them to the secure web portal (NFR.cdc.gov), which will have multi-factored authentication (MFA) (see *Data Security* section for more details). The NFR team will pilot test the enrollment process with multiple firefighters and fire departments prior to and in the early stages of web portal deployment. Appendix A.2 outlines the planned enrollment process and design steps following enrollment.

a. Enrollment

To complete enrollment in the NFR, the firefighters will need to first create an account and complete the informed consent document (Appendix D) and then the user profile (Appendix E) and then the enrollment questionnaire (Appendix F). Icons for each of these documents will be included on their profile page or dashboard. If firefighters have questions that are not included or fully answered in the FAQs, they can contact the NIOSH investigators at the contact information provided on the informed consent document.

After completing and electronically signing the informed consent document, the firefighters will be taken to the user profile page. This page will serve to collect basic information from the firefighter that could change over time and hence can be accessed and updated by the user. After completing the user profile questions, the firefighter will be directed to complete the enrollment questionnaire. The questionnaire will collect information on employment/workplace characteristics, exposure, demographics, lifestyle factors, co-morbidities, and other confounders. The enrollment process, including the questionnaire, is expected to take 30–45 minutes to complete and has been pilot tested with multiple firefighters from a variety of backgrounds and selected fire departments to ensure clarity and brevity prior to deployment. Further pilot testing will continue in an electronic format to test the enrollment process and system load and performance.

The questionnaire asks for the participant’s partial Social Security Number (SSN). Partial SSN is being requested as it will provide enough information for us to match participants to population-based cancer registries and maximize firefighters’ participation by avoiding perceived privacy concerns associated with requesting full SSN. The questionnaire explains why the SSN is needed, “*In the United*

States, each state has a cancer registry that collects and combines information on all cancer diagnoses from all hospitals in that state. Providing the last four digits of your social security number (SSN) will increase the likelihood of linking your profile and questionnaire information to any past or potentially future cancer diagnosis reported to a state. This information is necessary to meet the statutory requirements of the Firefighter Cancer Registry Act of 2018. You can choose to provide this information or not. As noted on the informed consent, all your private information will be encrypted, secured, and protected to the fullest extent allowed by law.)”

This language has been discussed with stakeholders at multiple meetings and conferences and has been reviewed by firefighters, investigators, cancer researchers, and health communication specialists. The NFR team will hold additional focus groups with firefighters to discuss potential communication strategies for the NFR, including discussion items about the collection of partial SSNs. Promotional materials will be developed to communicate the importance of collecting partial SSNs based on feedback received through these focus groups and other conversations. If firefighters are unable to complete the questionnaire in one sitting, they can log-off and return at a later date to complete it. If they have not completed the questionnaire after completing the informed consent, the firefighters will be sent a reminder email using the email address they provided during login and/or a text message using the mobile phone number they provided as part of the registration process 1 day after starting the process. If necessary, another reminder email or text message will be sent 7 days, 14 days, 28 days, 42 days, and 90 later. If there is no response after 90 days, no further emails or text messages will be sent.

Once the questionnaire has been completed and submitted, all responses will be uploaded to a secure server and the firefighter participant will no longer be able to access their questionnaire responses. However, the profile page or dashboard will include the profile data that were entered (see Appendix E). All this information can be viewed and edited from the dashboard, but only after the participant successfully logs in using MFA.

b. Follow-Up Questionnaires and Continued Engagement

Following enrollment, NIOSH will send NFR participants notifications for periodic follow-up questionnaires (e.g., one per year) to be filled out through the web portal. These follow-up questionnaires will contain questions related to documenting changes in work history (e.g., incident frequency/type, department, position), workplace practices (e.g., PPE use, shiftwork), and covariates (e.g., smoking and alcohol use) longitudinally, as well as more focused questions related to particular risk factors or health outcomes (e.g., reproductive health and breast cancer risk factors). These questionnaires will be voluntary but important for understanding the relationship between firefighting

and health status over time. All questionnaires will be designed to be short and minimize the time burden on NFR participants.

In addition to notifications for follow-up questionnaires, NIOSH will send NFR participants regular updates/newsletters (e.g., every six months) by email and/or text message to keep participants engaged and remind them to keep their contact information and user profile information up to date. Additionally, NIOSH may provide links to recent publications, study opportunities, or preliminary results from the NFR in the participants' user profile. This continued engagement will also likely improve response rate for follow-up questionnaires and provide a mechanism for notifying participants of external study opportunities (refer to *Sharing Data with External Investigators*).

Objective 2: Obtain records from fire departments/agencies for firefighters who consent to participate in the NFR to track trends and patterns of exposure as related to cancer in firefighters.

In addition to roster information, NIOSH will request fire incident records from fire departments for consenting firefighters dating back to January 1, 2010, or earlier when available, particularly among fire departments participating in the Targeted Cohort. Fire departments are required to collect some basic information about fire incidents under the National Fire Incident Reporting System (NFIRS) established by the U.S. Fire Administration. Department incident records will provide NIOSH investigators with apparatus and incident-specific information to be used as surrogates of exposure for exposure-response analyses. Specific variables of interest that will be requested from department incident records will include but are not limited to: incident number, fire station, apparatus, incident type (structure fire, car fire, etc.), on scene time, off scene time, job assignments, number of fire runs, and duration at fires. NIOSH will also explore obtaining records directly through states or other agencies, NFIRS, and/or software vendors (ESO, ImageTrend, Zoll, etc.) to reduce the burden on each participating fire department. This process will be pilot tested prior to collection of records.

NIOSH will also solicit employment records for consenting firefighters participating in the NFR, which will provide investigators with key individual-level information. Specific variables of interest requested from employment records for each firefighter participating in the NFR will include but are not limited to: full name, employee ID, current and past job titles (e.g., recruit, firefighter, chief, etc.), hire date, termination date (if applicable), promotion history, duration of employment, fire station, apparatus, and crew assignment(s). Where possible, NIOSH will attempt to collect electronic records from departments instead of paper records.

Meetings will be held with individual departments and local unions to reach agreement on their support to participate in the Targeted Cohort or otherwise encourage participation among their

membership. Specifically, the NFR team will work with individual fire department leadership to determine the most effective and secure mechanism for sharing employment and incident records with NIOSH. This will include employment records for all fire personnel participating in the NFR and department incident records dating back to at least January 1, 2010 or earlier when available (i.e., for information on eligible firefighters that were active at the department prior to 2010). Data use agreements (DUAs) can be developed if necessary.

Firefighters from engaged departments (e.g., those in the Targeted Cohort) will be asked to enroll through the NFR web registration. NIOSH investigators will be able to track response rate by running queries of the database. NIOSH investigators will code work history and incident and response records and combine data from each department into one database with linkages to individual participants where such linkages can be reliably made.

Additionally, if participants are currently tracking their exposures, they can individually give the exposure tracking programs (e.g., PER, NFORS, PIIERS, FirstForward) permission to provide this information to the NFR. At this time, it is not clear how many firefighters use exposure tracking systems, how long they have been using these systems (most are relatively new), or how complete or consistent the data are across the different platforms. If these programs gain in popularity and meet specific data standards and quality, there may be an opportunity to use the data to estimate exposures longitudinally, at least for certain groups of firefighters (e.g., new recruits). Therefore, although exposure tracking programs are not the primary data source for estimating lifetime exposures, the NFR program will consider these data for exploratory analyses and possible use in future assessments of exposure. To aid in the process of linking data between the NFR and exposure tracking programs, NIOSH has assigned an NFR participant number to every participant. Once the user has completed the informed consent, an email and/or text message will be sent to participants with their assigned NFR participant number. Participants can also retrieve the NFR participant number from their user profile. NFR users can share their participant number with the exposure tracking program (and other data sources, if applicable), which will improve the quality of data linkages when exposure tracking program data are shared with the NFR program. Other data collection methods for individual and department level information will also be considered and added as amendments to this protocol.

Objective 3: Monitor cancer in firefighters by linking with health information databases (e.g., population-based cancer registries and the National Death Index) to assess cancer incidence and mortality.

NIOSH will identify all cancer diagnoses and determine health and vital status for all NFR participants by periodically linking with health information databases. These linkages will be used to associate NFR participants' occupational information with cancer and/or cause of death information. NIOSH will link to all outcome databases (e.g., Social Security Administration Death Master File, NDI, and population-based cancer registries) using identifying information ascertained in the NFR web portal's profile and enrollment questionnaire (e.g., name, social security number, date of birth, address, sex).

For participants who become deceased, we will obtain underlying and contributing causes of death from NDI to determine cancer mortality and mortality due to other causes. Cancer incidence will be determined through data linkages with health surveillance databases like population-based cancer registries to more accurately assess the risk of specific cancers in the initial analysis and among living participants at each period of follow-up (i.e., linkage update), which is a more accurate measure for cancers with high survival rates (e.g., testicular and prostate). Cancer diagnoses and health information will be identified by matching participant records with applicable population-based cancer registries (commonly referred to as state cancer registries) from all states and territories in the U.S. and/or other information databases. Records will be obtained from cancer registries and institutions managing other information databases either by applying for data from registries and institutions individually or, when available, from pooled resources such as the North American Association of Central Cancer Registries' Virtual Pooled Registry Cancer Linkage System (NAACCR VPR-CLS), which is an automated, standard linkage methodology and streamlined application process available for cancer registries that volunteer to participate (<https://www.naacccr.org/about-vpr-cls/>). The VPR-CLS offers a secure mechanism for NIOSH to submit NFR identifiers for linking with participating state cancer registries. The deliverable to NIOSH will be a report of the number of matches by state that occurred, allowing NIOSH to prioritize individual state cancer registries for individual-level data exchange.

In order to conduct further vital status tracing over time and ensure quality control in data linkages, NIOSH will refer to existing administrative records resources, such as those available through the Internal Revenue Service (IRS) and LexisNexis.

Vital and health status, cause of death, and cancer incidence data will be updated periodically as new participants enroll and as the cohort ages. Linkages between exposure, demographic, and lifestyle information and mortality/cancer diagnosis information will be used to determine rates of death due to cancer and other causes, as well as the incidence of cancer among firefighters, overall and for specific subgroups/subspecialties of firefighters (e.g., men, women, non-white or minority, instructors, investigators, urban/rural, structural/wildland, career/volunteer, geographic regions, exposure amounts).

V. DATA MANAGEMENT AND ANALYSIS:

A. Data security

1. Creating an account

Account creation begins with the interested participant clicking the “Login.Gov” button on the CDC/NIOSH NFR web portal application. This self-registration initiates the process of creating a login.gov managed account. Login.gov is a single sign-on solution for U.S. government websites. This federal government service enables participants to log in to federal government applications using MFA. MFA is an authentication method that requires more than one method of authentication from independent categories of credentials to verify the user’s identity for a login or other transaction. When the participant clicks the “Login.Gov” button it will redirect to login.gov where they can sign in or create an account. The login.gov page that the participant is redirected to will be branded with the NFR logo to give the participant a consistent user interface experience.

Account creation requires entering one’s first and last name and an email address or phone number, creating a password and confirming it, and choosing a preferred language from a drop-down menu. The web portal will require firefighters to create an account using MFA. Briefly, the firefighters will enter their email address and a strong password and then be asked to provide at least two levels of authentication, which could include: 1) passcode via text message to their mobile phone; 2) security token via third-party authenticator app; and/or 3) biometrics (fingerprint or face ID). Through the login.gov authentication process, a universally unique identifier (UUID) that identifies the user is assigned to the participant, which is to be used for internal data management only. The firefighters’ UUID and email address will be shared with NIOSH. Participants can find assistance for creating accounts at <https://login.gov/help/>. After account creation, the participant is redirected back to the NFR web portal. After completing account creation (and informed consent document if not already signed), the firefighters will be taken to a profile page and asked to enter basic identifying and contact information (see Appendix E). This will establish their profile.

2. Login procedures

The NFR web portal will have a register/log in button. When the participant clicks the button, it will redirect to login.gov to handle the MFA process. Every time the participant signs in to the NFR web portal, they will need their email address, their password, and access to one of the two-factor authentication methods they chose to set up. After the participant enters their email address and password to sign in, login.gov will ask them to authenticate (e.g., enter a security code sent to their

phone by voice or text or enter the security code from their authentication application). After authenticating with login.gov, they are redirected back to the NFR web portal. Once a participant is authenticated on login.gov and passed back to the NFR web portal, the session will be managed by secure CDC on-premise infrastructure, including CDC-managed web servers and database servers.

When completing the questionnaire (Appendix F), firefighters will be automatically logged-off if there is no online activity for 5 minutes. To log back in, the firefighters will be required to successfully perform MFA as described previously.

3. Password management

To change their password, participants will be redirected to the “Manage Account” page on login.gov (or can click “forgot password” from login.gov landing page) and will follow the prompts for resetting or changing their password. Login.gov enforces strong passwords that meet National Institute of Standards and Technology (NIST) requirements

4. Encryption

Collected data (including questionnaire data, exposure data, and matched cancer data) will be stored by unique participant ID. This unique participant ID will be a UUID, assigned by login.gov, and will not be shared with individual firefighters (used for internal purposes). NIOSH has also assigned a participant number to every firefighter, which will be shared with firefighters to improve the quality of data linkages with exposure tracking programs. User accounts will be proofed at (LOA3), corresponding to NIST 800-63-2 levels of assurance (LOA). All collected data will be stored in a secure database that meets NIST 800-53, SC-28 PROTECTION OF INFORMATION AT REST standards. Multiple layers of encryption will be implemented on the database.

5. Minimize collection of identifiable information

The information required for registration has been limited to only that needed—with other voluntary information—to link an individual to state cancer registries and the NDI (first and last name and date of birth), or is necessary to ensure eligibility (date of birth) or questionnaire logic (biological sex and age).

6. Internal Access

Restrictions on internal access and auditing of internal access will be implemented to meet the controls listed in NIST Special Publication 800-53 (as amended), Security and Privacy Controls for Federal Information Systems and Organizations.

7. Physical and Environmental Protection (PE)

CDC facilities meet security controls in accordance with the PE security control requirements stated in NIST SP 800-53, Revision 4, Security and Privacy Controls for Federal Information Systems and Organizations. Servers are stored in a server room secured by the CDC. Physical controls are in place to secure entry into CDC buildings (Guards, ID Badges, Key Card, Cipher Locks, and Closed-Circuit TV). All incidents involving a suspected or confirmed breach of Personally Identifiable Information (PII) must be reported to CDC Office of the Chief Information Security Officer (OCISO) according to the policy titled “OCISO/CDC Standard for Responding to Breaches of Personally Identifiable Information (PII).”

B. Data Analysis

The primary goal of this surveillance system is to monitor trends in cancer incidence among firefighters (e.g., incidence rates), as specified in the mandate. Beyond this goal, the data will be evaluated by NIOSH staff and external researchers for various potential analytic objectives, including but not limited to descriptive and hypothesis-generating investigations of cancer risk factors, exposure-response analyses, and comparisons of cancer risk and risk factors between subgroups of firefighters as well as external/general populations. Data analysis objectives and plans may change and evolve over time as the cohort grows and surveillance needs develop. While the objectives in this protocol outline the design of the NFR, an example data analysis plan for select analyses related to the primary goal of the NFR is described below.

1. Comparing Cohort Characteristics

Initially, characteristics of NFR sample subgroups will be evaluated to understand a cohort profile and, possibly, inherent discrepancies between enrollment groups of the NFR sample. Because of the varying enrollment strategies implemented for the sampling design, firefighters may differ depending on whether they were enrolled through the Targeted Cohort or Open Cohort. Baseline characteristics will be compared to assess the advantages of stratified and sensitivity analyses, identify potential confounding variables, and evaluate the impacts of pooling data for any analyses. The examination of subcohort characteristics will also aid in identifying the level of selection bias in the Open Cohort, and subsequently the ability to pool these participants with the Targeted Cohort for prospective (e.g., mortality and incidence) analyses of cancer.

2. Analyzing Mortality and Cancer Incidence Rates

Mortality and cancer rates will be calculated and compared to the general U.S. population as was done in previous NIOSH studies of firefighters (Daniels et al., 2014; Pinkerton, et al., 2020). State rates will be used for comparison where available. Briefly, mortality rates will be assessed by using a statistical program to generate expected numbers of cancer deaths. Enumeration of observed deaths and person-years at risk for NFR participants will begin at enrollment and end at the date deceased or end of observation, whichever is earliest. Numbers of deaths observed for each cause (e.g., cancer site) will be divided by the expected number of deaths to obtain cause-specific standardized mortality ratios (SMRs). The precision of each estimated SMR will be assessed assuming a Poisson or Negative Binomial distribution, with two-sided 95% confidence intervals.

To analyze cancer incidence, SIRs, person days at risk, and the expected number of cancer incidence cases will be calculated using statistical programs such as R and/or SEER*Stat. The methods for producing these estimates are the same as those used for the mortality analyses. Person-days at risk will accumulate beginning at enrollment. Each individual contributes person-days until the date of diagnosis of cancer, the date of death, or the end of observation, whichever is earliest.

In addition to general population comparisons, regression analyses will be conducted to further evaluate the associations between risk factors and selected cancer outcomes through internal comparisons. In general, exposure-response modeling of longitudinal data will be approached using standard methods of regression modeling of survival data (i.e., failure-time data). Descriptive, cross-sectional, and/or nested case-control analyses will also be conducted for some analytic objectives. Analysis plans guiding specific modeling strategies will be developed based on review of available data.

Analyses of the Targeted Cohort might potentially incorporate sampling weights, as appropriate, for the oversampling of women and minorities of Phase 1 and the stratified sampling design of Phase 2 to improve the generalizability of results.

C. Potential Limitations and Considerations

The proposed approach for the NFR surveillance system has some limitations. The Targeted Cohort will be much more resource-intensive than the Open Cohort, but it provides the most scientifically rigorous method for assessing prospective cancer incidence and mortality and a streamlined method for obtaining incident records. Despite specific inclusion criteria and a sampling design for the Targeted Cohort, the participant population will be limited to fire service personnel from departments/states that are willing and able to participate in the NFR. These departments and states may employ workplace practices and policies for firefighters that differ from departments/states that decline or are unable to

participate in the NFR, potentially limiting the generalizability of the NFR. Additionally, efforts to ensure large representation of women, minorities, and volunteers from large departments in Phase 1 of the Targeted Cohort may further impact generalizability of a pooled sample. Some analyses like mortality/incidence for rare cancers and subgroups (e.g., women, minorities, rural, volunteers) of firefighters may be limited by small sample sizes; and sample sizes for smaller subgroups may not be generalizable (e.g., samples of women and minorities, who will likely come from mostly large/urban settings in certain regions).

NIOSH will have the ability to identify potential biases affecting the NFR sample by comparing the demographics and characteristics of NFR participants to those of the U.S. firefighter workforce that are provided by external sources, such as NFPA, USFA, and the U.S. Bureau of Labor Statistics. Likewise, internal comparisons of NFR subsamples will identify strengths and limitations of pooling data, stratified analyses, sensitivity analyses, and controlling for select covariates. Additionally, with roster information available from fire departments and states selected in the Targeted Cohort serving as denominator estimates, NIOSH will be able to evaluate estimates of response and non-response.

Exposure-response analyses using department incident records will be limited to participants and time periods for which records are available from each department. However, questionnaire data will be used to examine exposure-response for all participants based on comprehensive work history and estimated number of fire responses (even across multiple departments).

The NFR analyses may be affected by “healthy worker” biases since a firefighting population is healthier than the general U.S. population, and firefighters that participate must have survived until present day to be eligible (healthy worker survivor effect (HWSE)) (Checkoway et al., 1989; Naimi et al., 2013). These biases will be evaluated analytically where possible. Methods accounting for HWSE are currently evolving (e.g., Naimi et al., 2013). NIOSH will keep current with the literature on HWSEs and utilize proven methodology as practicable.

The ability to perform lagged analyses may be difficult where timing of exposures or behaviors cannot be accurately ascertained through self-report. However, information will be obtained longitudinally with follow-up questionnaires and cancer can also be evaluated prospectively in relation to some self-reported information after expected latency periods have occurred. Timing of incidents/practices will also be available from department records for some participants and some self-reported items in the questionnaire for all participants. However, because of the long latency period of cancer and the NFR’s prospective design, it will be some time before cancer incidence rates, comparisons with the general population, and some cancer risk factors may be evaluated.

VI. HUMAN SUBJECTS PROTECTIONS

A. Surveillance and Research Activities

1. Surveillance Activities

The primary objective of the NFR is to monitor cancer and cancer risk factors among the U.S. fire service. This primary objective is a public health surveillance activity deemed not to be research under the 2018 Requirements (subpart A of 45 CFR part 46), and therefore does not require Institutional Review Board (IRB) submission.

By definition, public health surveillance activities include “the collection and testing of information or biospecimens, conducted, supported, requested, ordered, required, or authorized by a public health authority. Such activities are limited to those necessary to allow a public health authority to identify, monitor, assess, or investigate potential public health signals, onsets of disease outbreaks, or conditions of public health importance (including trends, signals, risk factors, patterns in diseases, or increases in injuries from using consumer products)” (<https://www.hhs.gov/ohrp/regulations-and-policy/requests-for-comments/draft-guidance-activities-deemed-not-be-research-public-health-surveillance/index.html>). The NFR has been authorized by CDC/NIOSH to collect information to allow NFR investigators to identify and monitor cancer trends and risk factors among the U.S. fire service. Public health surveillance activities of the NFR include ongoing recruitment and enrollment of participants; follow-up or supplemental questionnaire administration related to cancer and cancer risk factors, including but not limited to work history, exposure, comorbidities, and lifestyle characteristics; and routine linkages with NDI and cancer registries to determine cancer status and/or cause of death.

2. Secondary Activities

NIOSH investigators will create and administer follow-up questionnaires to capture additional information related to firefighters’ work, cancer, or other health conditions. Any potential questionnaires not related to the primary goal of monitoring cancer and cancer risk factors among firefighters may need to undergo research/non-research determination at CDC/NIOSH. If the questionnaires and related activities are deemed a public health surveillance activity under the goals of the NFR, they will be added to this protocol as an amendment and submitted for review and approval according to CDC/NIOSH procedures. All questionnaires will be submitted to the U.S. Office of Management and Budget (OMB) for approval. If the new questionnaires are deemed research, the NIOSH investigators will develop a new protocol, undergo CDC/NIOSH review procedures, and obtain all the necessary IRB and OMB approvals before posting these questionnaires to the web portal and notifying participants via email or text message of the new questionnaire.

External researchers may request that NIOSH reach out to NFR participants to solicit their interest in an outside study, as feasible. In these cases, NIOSH would review and approve these requests on a case-by-case basis, ensuring that all studies have received appropriate review and approvals. Once NIOSH has approved the proposal, the NFR program would be responsible for re-contacting participants and/or sharing/posting resources for the external study.

Additionally, NIOSH is required to make NFR data available to external researchers as stated in the legislation (subparts (2)(f)-(g)). See the *Assurance of Confidentiality* section (below) for more details on how data will be made available to external researchers.

B. Informed Consent

NIOSH will obtain informed consent as described in *Objective 1*. Interested firefighters will be able to read the consent form in its entirety and provide an electronic signature indicating their consent. If firefighters have questions, they will be referred to the FAQs on the NFR website and if their questions are not answered there, we will provide an email address that they can use to reach a member of the NFR investigation team. It is important to note that most career fire departments require at least a high school education and nearly all fire departments (including volunteer departments) require fluency in English. Hence, we expect the consent form to be understandable to most firefighters, even at a Flesch-Kincaid grade level of 14.

C. The Reasonable Person Standard

Application of the **reasonable person** standard is required by the revised Common Rule in development of the consent process and form. That is, the consent form must provide the information that a reasonable person would want to have in order to make an informed decision about whether to participate. **Key Information** is the phrase used to describe a new requirement for consent processes and forms: Obtaining consent must begin by presenting the potential participants with the key information that is most likely to assist them in understanding the reasons why they might or might not want to participate in this surveillance project.

Based on conversations the NFR team has had with stakeholders, it is clear that confidentiality of data is of utmost importance to the firefighters. It is also clear that there is confusion among firefighters regarding who can register in the NFR. Consequently, it is important that firefighters understand that their data will be protected to the fullest extent allowed by law and cannot be released to their fire departments or insurance companies and that all firefighters in the United States can register, regardless of their position or health status. The “Key Information” section of the consent form (first paragraph,

Appendix D) provides these details in a short and understandable format so that a firefighter (or any reasonable person) has these details up-front as they continue to read the consent form. The rest of the consent form then provides additional details (including potential risks) that are also necessary to make an informed decision about whether or not to participate in the study.

In addition to the details in the consent form, the participants will also be provided with a link to FAQs (www.cdc.gov/niosh/firefighters/registry.html) and a phone number to reach a member of the NFR team if they have additional questions. However, we have strived to make the consent form comprehensive, concise, and understandable, so that a reasonable person has all the information in the consent form necessary to decide whether or not to participate.

D. Confidentiality

1. Assurance of Confidentiality

NIOSH will seek to obtain an Assurance of Confidentiality (AoC) for the NFR. An AoC is a formal confidentiality protection authorized under Section 308(d) of the Public Health Service Act. An AoC protects individuals and institutions involved in either research or non-research (e.g., surveillance), thereby protecting the confidentiality of participants involved in both surveillance and any future research involving NFR data. Only individuals that are part of the NFR program will have access to directly identifiable information (e.g., name, SSN, email address, etc.). These individuals may include NIOSH employees, Federal contractors, cooperative agreement partners, etc. However, all individuals with access to direct identifiers will have to comply with the data security requirements outlined above in the *Data Security* section.

This protection will allow the NFR team to assure participants, departments, and other institutions that NIOSH will protect the confidentiality of the data collected. The legislation states that no identifiable information may be used for any purpose other than the purpose for which it was supplied, and that no disclosure of the data may be made unless such institution or individual has consented to that disclosure.

The main purpose of NFR data is to monitor cancer incidence among firefighters and evaluate the relationship between occupational factors and other risk factors and cancer as specified under the Firefighter Cancer Registry Act of 2018. The data can also be analyzed for other purposes provided those purposes are related to public health surveillance or firefighter health and safety research.

NIOSH may make NFR data accessible, upon request, to external researchers through a Research Data Center (RDC). All requests for NFR data files must be made through a proposal to the RDC. The proposal will be reviewed by the RDC, NIOSH, and any applicable population-based cancer registry or

institutions housing other information databases mentioned in the proposal, if applicable. If approved by all parties, the appropriate de-identified data files will be provided to the RDC for analysis. All direct identifiers will be removed but indirect identifiers (e.g., sex, race, etc.) will be provided at the individual level for analysis. Some indirectly identifying data (e.g., cells with n<10) may be redacted to minimize the possibility of identifying participants through these identifiers. External researchers will only be permitted to leave the RDC with summary data tables which will be reviewed by RDC staff to ensure that participants cannot be indirectly identified.

Collected data (including questionnaire data, exposure data, and matched cancer and death data) will be stored by unique participant ID. This participant ID will be a UUID, assigned by login.gov. User accounts will be proofed at (LOA3), corresponding to NIST 800-63-2 levels of assurance (LOA). All collected data will be stored in a Transparent Data Encryption (TDE) database with the additional layer of column –level encryption for Personally Identifiable Information fields.

VII. RISKS AND BENEFITS:

A. Assessment of Potential Benefits

There are no immediate benefits from participating in the NFR. However, firefighters may benefit from participating in the NFR in the future (e.g., 10 years from now) by contributing to a knowledge base that could influence practices and policies aimed at preventing cancer in firefighting for generations to come. For example, the NFR could find that certain control measures are related to a reduced risk of cancer, which would provide additional evidence and support for fire departments to implement these measures.

B. Assessment of Potential Risks

The risk to participants in this study is minimal. There is a slight risk of unintended disclosure of the personal information for participants in this registry. Participants may also experience emotional stress by participating in a study focused on cancer or answering questions related to cancer. However, these risks will be minimized as summarized below.

C. Description of Measures Taken to Minimize Potential Risks

Several steps are being taken to protect participants' confidentiality and prevent unintended disclosure of personal information at each step along the registration, cancer diagnosis matching, data sharing, and dissemination processes.

1. Enrollment/Registration

- Participants will only be able to enter their information, answer questions, and/or see previously entered responses after successfully logging in using MFA.
- If a firefighter is uncomfortable answering a question, he or she can skip the question. All questions are optional except for first and last name, date of birth, and sex.
- Once the participants submit their questionnaire, their responses are uploaded to an on-premise secure and encrypted database. Their questionnaire and responses are then cleared from the web portal and can no longer be accessed by them, with the exception of the information that is part of their profile page or dashboard for possible future updating. This information includes firefighter's name, current residential address, current email address, mobile phone number, and work status (Appendix E). This information will be editable from their profile page but can only be accessed after successfully logging in using MFA.

2. Encryption

- Following controls listed in [NIST Special Publication 800-53](#), Security and Privacy Controls for Federal Information Systems and Organizations, data will be encrypted at rest and in transit.

3. Matching to State Cancer Registries and Other Information Databases

- Identifiable information provided to state cancer registries, the NDI, or institutions managing other information databases for linkage and data acquisition will not be kept by those programs. State cancer registry data and NDI data are protected by Assurances of Confidentiality within the NIOSH Division of Field Studies and Engineering which restrict release of the data. Under the Assurance for death certificate data, NIOSH is allowed to share de-identified individual-level data with external investigators under an approved protocol and within a secure data enclave such as a National Center for Health Statistics - Research Data Center (RDC). The current AoC for cancer registry data does not permit NIOSH to share these data with external investigators. However, NIOSH is exploring an update to this AoC that would function in a manner similar to the death certificate Assurance and could permit sharing of de-identified individual-level data with external investigators via RDCs, if permitted by the state cancer registry.

4. Sharing Data with External Investigators

- The NFR Team will be the stewards of the collected data. Individually identifiable data will not be shared with external researchers. External researchers will be able to request access to

indirectly identifiable NFR data through an RDC as outlined in the *Assurance of Confidentiality* section (above).

5. *Dissemination of Results*

- Results will be published in academic peer-reviewed journals or NIOSH publications. All dissemination products will be reviewed following NIOSH publication guidelines. After NIOSH publication clearance and submission to the academic journal, results and findings will be further disseminated via trade magazine articles, presentations, and in other products through fire service stakeholders. Only summary aggregate data that cannot be linked back to an individual will be disseminated.

D. Vulnerable populations

All adult members of the U.S. fire service (18 years of age or older), including active, former, and retired members, who have ever been an active firefighter will be eligible to join the NFR, regardless of whether they have been diagnosed with cancer. This includes career, volunteer, seasonal, wildland, and paid-on-call firefighters. Because the web portal provides an opportunity for any firefighter to register, it is likely that our participant population will be diverse and include firefighters of both sexes and every race and ethnicity and socioeconomic background. There are no exclusions based on pregnancy or incarceration status. Participation is voluntary for all individuals and coercion to participate is not condoned. We are providing no incentives to participate in the NFR.

It is possible that firefighters will feel obligated to participate if their superiors were to tell them participation is required. In working with fire department management (and local unions) we will convey that the NFR is entirely voluntary. The voluntary nature of the NFR is also clearly noted in the recruiting flyer and consent form. If a fire department were to ask us who has registered from their department, NIOSH would only provide summary statistics (e.g., percent of their active firefighters who registered) that could not be used to identify specific people or subgroups.

E. Risk versus Benefit Evaluation

Information gleaned from this study is likely to result in better understanding of cancer in the fire service and improved protections for firefighters as a whole. The risks associated with this study are considered to be minimal. The primary risk is unintended disclosure of private information, and numerous safeguards will be in place to minimize that risk. The anticipated benefits are thought to outweigh the potential harm and discomfort to the study participants.

VIII. FUNDING: The NFR is funded annually by Congress as authorized in the Firefighter Cancer Registry Act of 2018 (H.R.931).

REFERENCES:

- Abreu, A.C., C.; Silva, S.; Morais, S.; Pereira, M.; et al.
Wood smoke exposure of Portuguese wildland firefighters: DNA and oxidative damage evaluation.
J Toxicol Environ Health, 80 (2017)
- Adetona, O.S., C.; Li, Z.; Sjodin, A.; Calafat, A.; Naeher, L.
Hydroxylated polycyclic aromatic hydrocarbons as biomarkers of exposure to wood smoke in wildland firefighters.
J Expo Sci Environ Epidemiol, 27 (2017), pp.78-83
- Adetona, O.S., C.; Onstad, G.; Naeher, L.
Exposure of wildland firefighters to carbon monoxide, fine particles, and levoglucosan.
Ann Occup Hyg, 57 (2013) pp. 979-991
- Ahn, Y.S.; Jeong, K.S.; Kim, K.S.
Cancer morbidity of professional emergency responders in Korea.
Am J Ind Med, 55 (2012), pp. 768-778
- Alexander, B.M.; Baxter, C.S.
Flame Retardant Contamination of Firefighter Personal Protective Clothing - a Potential Health Risk for Firefighters.
J Occup Environ Hyg, (2016), pp. 1-26
- Amadeo, B.M., J.; Moisan, F.; Donnadiou, S.; Gaelle, C.; Simone, M.; Lembeye, C.
French firefighter mortality: analysis over a 30-year period.
Am J Ind Med, 58 (2015), pp. 437-443
- Andersen, M.H.G.; Saber, A.T.; Clausen, P.A.; Pedersen, J.E.; Lohr, M.; Kermanizadeh, A.; Loft, S.; Ebbehøj, N.; Hansen, A.M.; Pedersen, P.B.; Koponen, I.K.; Nørskov, E.C.; Møller, P.; Vogel, U.
Association between polycyclic aromatic hydrocarbon exposure and peripheral blood mononuclear cell DNA damage in human volunteers during fire extinction exercises.
Mutagenesis, (2017)
- Aronson, K.T., G.; Smith, L.
Mortality among fire fighters in metropolitan Toronto.
Am J Ind Med, 26 (1994), pp. 89-101
- Bao, Y.; Bertoia, M. L.; Lenart, E. B.; Stampfer, M. J.; Willett, W. C.; Speizer, F. E.; Chavarro, J. E.
Origin, Methods, and Evolution of the Three Nurses' Health Studies
Am J Public Health, 106 (2016), pp. 1573-1581
- Baris, D.G., T.; Telles, J.; Heineman, E.; Olshan, A.; Zahm, S.
Cohort mortality study of Philadelphia firefighters.
Am J Ind Med, 39 (2001), pp. 463-476
- Bates, M.N.; Fawcett, J.; Garrett, N.; Arnold, R.; Pearce, N.; Woodward, A.
Is testicular cancer an occupational disease of fire fighters?
Am J Ind Med, 40 (2001), pp. 263-270
- Beaumont, J.C., G.; Jones, J.; Schenker, M.; Signelton, J.; Piantanida, L.; Reiterman, M.
An epidemiologic study of cancer and other causes of mortality in San Francisco firefighters.
Am J Ind Med, 19 (1991), pp. 357-372
- BLS.
Employed persons by detailed occupation, sex, race, and Hispanic or Latino ethnicity (2019).

- Bolstad-Johnson, D.M.; Burgess, J.L.; Crutchfield, C.D.; Stormont, S.; Gerkin, R.; Wilson, J.R.
Characterization of firefighter exposures during fire overhaul.
 AIHAJ, 61 (2000), pp. 636-641
- Broyles, G.
Wildland Firefighter Smoke Exposure.
 US Forest Service (2013)
- Casjens, S.; Brüning, T.; Taeger, D.
Cancer risks of firefighters: a systematic review and meta-analysis of secular trends and region-specific differences.
 Int Arch Occup Environ Health, 93 (2020), pp. 839-852
- Checkoway, H.; Pearce, N.E.; Crawford-Brown, D.J.
Research Methods in Occupational Epidemiology.
 New York: Oxford University Press (1989)
- Chlebowski, R. T.; Luo, J.; Anderson, G. L.; Barrington, W.; Reding, K.; Simon, M. S.; Manson, J. E.; Rohan, T. E.; Wactawski-Wende, J.; Lane, D.; Strickler, H.; Mosaver-Rahmani, Y.; Freudenheim, J. L.; Saquib, N.; Stefanick, M. L.
Weight loss and breast cancer incidence in postmenopausal women.
 Cancer, 125 (2019), pp. 205-212
- Congress.
U.S. Firefighter Cancer Registry Act of 2018.
- Daniels, R.D.; Bertke, S.; Dahm, M.M.; Yiin, J.H.; Kubale, T.L.; Hales, T.R.; Baris, D.; Zahm, S.H.; Beaumont, J.J.; Waters, K.M.; Pinkerton, L.E.
Exposure-response relationships for select cancer and non-cancer health outcomes in a cohort of US firefighters from San Francisco, Chicago and Philadelphia (1950-2009).
 Occup Environ Med, 72 (2015), pp. 699-706
- Daniels, R.D.; Kubale, T.L.; Yiin, J.H.; Dahm, M.M.; Hales, T.R.; Baris, D.; Zahm, S.H.; Beaumont, J.J.; Waters, K.M.; Pinkerton, L.E.
Mortality and cancer incidence in a pooled cohort of US firefighters from San Francisco, Chicago and Philadelphia (1950-2009).
 Occup Environ Med, 71 (2014), pp. 388-397
- Demers PA, DeMarini DM, Fent KW, Glass DC, Hansen J, Adetona O, Andersen MH, Freeman LEB, Caban-Martinez AJ, Daniels RD, Driscoll TR, Goodrich JM, Graber JM, Kirkham TL, Kjaerheim K, Kriebel D, Long AS, Main LC, Oliveira M, Peters S, Teras LR, Watkins ER, Burgess JL, Stec AA, White PA, DeBono NL, Benbrahim-Tallaa L, de Conti A, El Ghissassi F, Grosse Y, Stayner LT, Suonio E, Viegas S, Wedekind R, Boucheron P, Hosseini B, Kim J, Zahed H, Mattock H, Madia F, Schubauer-Berigan MK. **Carcinogenicity of occupational exposure as a firefighter.** Lancet Oncol. (2022), ISSN 1470-2045
- Demers, P.A.C., H.; Vaughan, T.; Weiss, N.; Heyer, N.; Rosenstock, L.
Cancer incidence among firefighters in Seattle and Tacoma, Washington (United States).
 Cancer Causes Control, 5 (1994), pp. 129-135
- Demers, P.A.H., N.; Rosenstock, L.
Mortality among firefighters from three northwestern United States cities.
 Br J Ind Med, 49 (1992), pp. 664-670
- Dreij, K.M., A.; Jarvis, I.; Lim, H.; Hurkmans, J.; Gustafsson, J.; Bergvaill, C.; Westerholm, R.; Johansson, C.; Stenius, U.
Cancer Risk Assessment of Airborne PAHs Based on in Vitro Mixture Potency Factors.
 Environ Sci Technol. 51 (2017), pp. 8805-8814

- Easter, E.; Lander, D.; Huston, T.
Risk assessment of soils identified on firefighter turnout gear.
 J Occup Environ Hyg, 13 (2016), pp. 647-657
- Ellis, L.C., A.; Spiegel, D.; Ladabaum, U.; Haile, R.; Gomez, S.
Racial and Ethnic Disparities in Cancer Survival: The Contribution of Tumor, Sociodemographic, Institutional, and Neighborhood Characteristics.
 J Clin Oncol, 1 (2018), pp. 25-33
- Fent, K.W.; Alexander, B.; Roberts, J.; Robertson, S.; Toennis, C.; Sammons, D.; Bertke, S.; Kerber, S.; Smith, D.; Horn, G.
Contamination of firefighter personal protective equipment and skin and the effectiveness of decontamination procedures.
 J Occup Environ Hyg, (2017), <http://dx.doi.org/10.1080/15459624.15452017.11334904>
- Fent, K.W.; Eisenberg, J.; Snawder, J.; Sammons, D.; Pleil, J.D.; Stiegel, M.A.; Mueller, C.; Horn, G.P.; Dalton, J.
Systemic exposure to PAHs and benzene in firefighters suppressing controlled structure fires.
 Ann Occup Hyg, 58 (2014), pp. 830-845
- Fent, K.W.; Evans, D.E.; Babik, K.; Striley, C.; Bertke, S.; Kerber, S.; Smith, D.; Horn, G.P.
Airborne contaminants during controlled residential fires.
 J Occup Environ Hyg, (2018), pp. 1-34
- Fent, K.W.; Mayer, A.; Bertke, S.; Kerber, S.; Smith, D.; Horn, G.P.
Understanding airborne contaminants produced by different fuel packages during training fires.
 J Occup Environ Hyg, 16 (2019a), pp. 532-543
- Fent, K.W.; Toennis, C.; Sammons, D.; Robertson, S.; Bertke, S.; Calafat, A.M.; Pleil, J.D.; Geer Wallace, M.A.; Kerber, S.; Smith, D.L.; Horn, G.P.
Firefighters' and instructors' absorption of PAHs and benzene during training exercises.
 Int J Hyg Environ Health, 222 (2019b), pp. 991-1000
- Freeman, M.; Pollack, L.; Rees, J.; Johnson, C.; Rycroft, R.; Rousseau, D.; Hsieh, M.
Capture and coding of industry and occupation measures: Findings from eight National Program of Cancer Registries states. Am J Ind Med, 60 (2017), pp. 689-695
- Fritschi, L.G., D.
Firefighters and cancer: where are we and where to now?
 Occup Environ Med, 71 (2014), pp. 525-526
- Glass, D.D.M., A.; Pircher, S.; Vander Hoorn, S.; Sim, M.
Mortality and cancer incidence at a fire training college.
 Occup Med (Lond), 66 (2016a), pp. 536-542
- Glass, D.D.M., A.; Pircher, S.; Vander Hoorn, S.; Sim, M.
Mortality and cancer incidence in a cohort of male paid Australian firefighters.
 Occup Environ Med, 73 (2016b), pp. 761-771
- Glass, D.D.M., A.; Pircher, S.; Vander Hoorn, S.; Sim, M.
Mortality and cancer incidence among male volunteer Australian firefighters.
 Occup Environ Med, 74 (2017), pp. 628-638
- Glass, D.D.M., A.; Pircher, S.; Vander Hoorn, S.; Sim, M.
Mortality and cancer incidence among female Australian firefighters.
 Occup Environ Med, 76 (2019), pp. 215-221
- Guidotti, T.L.
Mortality of urban firefighters in Alberta, 1927-1987.
 Am J Ind Med, 23 (1993), pp. 921-940

- Guidotti, T.L.
Evaluating causality for occupational cancers: the example of firefighters.
 Occup Med (Lond), 57 (2007), pp. 466-471
- Harris, M.K., T.; MacLeod, J.; Tjepkema, M.; Peters, P.; Demers, P.
Surveillance of cancer risks for firefighters, police, and armed forces among men in a Canadian census cohort.
 Am J Ind Med, 61 (2018), pp. 815-823
- Hays, J.; Hunt, J. R.; Hubbell, F. A.; Anderson, G. L.; Limacher, M.; Allen, C.; Rossouw, J. E.
The Women's Health Initiative recruitment methods and results
 Ann Epidemiol, 13 (2003), pp. S18-77
- Heyer, N.W., N.; Demers, P.; Rosenstock, L.
Cohort mortality study of Seattle fire fighters: 1945-1983.
 Am J Ind Med, 17 (1990), pp. 493-504
- Hoppe-Jones, C.B., S.; Burgess, J.; Snyder, S.; Flahr, L.; Griffin, S.
Use of urinary biomarkers and bioassays to evaluate chemical exposure and activation of cancer pathways in firefighters.
 Occup Environ Med, 75 (2018), pp. 412-413
- Howlader, N.N., A.; Krapcho, M.; Miller, D.; Brest, A.; Yu, M.; Ruhl, J.; Tatalovich, Z.; Mariotto, A.; Lewis, D.; Chen, H.; Feuer, E.;
Cronin K. SEER Cancer Statistics Review, 1975-2016.
 Bethesda, MD: National Cancer Institute (2019)
- IARC.
Painting, Firefighting, and Shiftwork. IARC Monographs on the Evaluation of Carcinogenic Risks to Humans Vol 98.
 Lyon, France: World Health Organization (2010)
- IARC.
IARC Working Group on the Evaluation of Carcinogenic Risks to Humans. Personal habits and indoor combustions. Volume 100 E.
 A review of human carcinogens ed (2012)
- IARC.
Advisory Group recommendations on priorities for the IARC Monographs.
 Lancet Oncol, 20 (2019), pp. 763-764
- IARC.
IARC Monographs on the Identification of Carcinogenic Hazards to Humans: Agents classified by the IARC Monographs, Volumes 1–127. <https://monographs.iarc.fr/list-of-classifications>. (2020)
- Jalilian, H.Z., M.; Weiderpass, E.; Rueegg, C.; Khosravi, Y.; Kjaerheim, K.
Cancer incidence and mortality among firefighters.
 Int J Cancer, 145 (2019), pp. 2639-2646
- Jankovic, J.; Jones, W.; Burkhart, J.; Noonan, G.
Environmental study of firefighters.
 Ann Occup Hyg, 35 (1991), pp. 581-602
- Jeong, K.S.Z., J.; Griffin, S.; Jacobs, E.; Dearmon-Moore, D.; Zhai, J.; et al.
MicroRNA Changes in Firefighters.
 J Occup Environ Med, 60 (2018), pp. 469-474
- Keir, J.L.A.; Akhtar, U.S.; Matschke, D.M.J.; Kirkham, T.L.; Chan, H.M.; Ayotte, P.; White, P.A.; Blais, J.M.
Elevated Exposures to Polycyclic Aromatic Hydrocarbons and Other Organic Mutagens in

- Ottawa Firefighters Participating in Emergency, On-Shift Fire Suppression.**
 Environ Sci Technol, 51 (2017), pp. 12745-12755
- Kirk, K.M.; Logan, M.B.
Structural Fire Fighting Ensembles: Accumulation and Off-gassing of Combustion Products.
 J Occup Environ Hyg, 12 (2015), pp. 376-383
- Lee, D. J., Koru-Sengul, T., Hernandez, M. N., Caban-Martinez, A. J., McClure, L. A., Mackinnon, J. A., & Kobetz, E. N. (2020). **Cancer risk among career male and female Florida firefighters: Evidence from the Florida Firefighter Cancer Registry (1981-2014).** American Journal of Industrial Medicine, (2020).
- LeMasters, G.K.; Genaidy, A.M.; Succop, P.; Deddens, J.; Sobeih, T.; Barriera-Viruet, H.; Dunning, K.; Lockey, J. **Cancer risk among firefighters: a review and meta-analysis of 32 studies.**
 J Occup Environ Med, 48 (2006), pp. 1189-1202
- Lewis, S.B., H.; Faith, M.
Cancer mortality among Los Angeles city firefighters.
 Beverly Hills, CA: Institute for Cancer and Blood Research (1982)
- McClure LA, Koru-Sengul T, Hernandez MN, Caban-Martinez AJ, Kobetz EN, Lee DJ. **Comparing cancer risk estimates using occupational record linkage approaches in male Florida firefighters.** Am J Ind Med, 64 (2021), pp. 78-83.
- McClure, L.; Koru-Sengul, T.; Hernandez, MN.; Mackinnon, J.; Schaefer-Solle, N.; Caban-Martinez, A.; Lee, D.; Kobetz, E. Availability and accuracy of occupation in cancer registry data among Florida firefighters. Plos One, 14 (2019)
- Muegge, C.M.; Zollinger, T.; Song, Y.; Wessel, J.; Monahan, P.; Moffatt, S.
Excess mortality among Indiana firefighters, 1985-2013
 Am J Ind Med. 61 (2018); pp.961-967
- Musk, A.W.; Monson, R.R.; Peters, J.M.; Peters, R.K.
Mortality among Boston firefighters, 1915--1975.
 Br J Ind Med, 35 (1978), pp. 104-108
- Naimi, A. I., Richardson, D. B., & Cole, S. R. **Causal inference in occupational epidemiology: accounting for the healthy worker effect by using structural nested models.** American Journal of Epidemiology, 178 (2013), pp. 1681-1686.
- Navarro, K.K., M.; Mackay, C.; Reinhardt, T.; Balmes, J.; Broyles, G.; Ottmar, R.; Naher, L.; Domitrovich, J. **Wildland firefighter smoke exposure and risk of lung cancer and cardiovascular disease mortality.** Environ Res, (2019), pp. 462-468
- NFPA.
U.S. Fire Department Profile (2018)
- Oliveira, M.D.-M., C.; Morais, S.; Slezakova, K.; Pereira, MC.; Fernandes, A.
Levels of urinary biomarkers of exposure and potential genotoxic risks in firefighters.
 Occupational Safety and Hygiene VI - Selected contributions from the International Symposium Occupational Safety and Hygiene 2018;
- Petersen, K.P., J.; Bonde, J.; Ebbelhoej, N.; Hansen, J.
Long-term follow-up for cancer incidence in a cohort of Danish firefighters.
 Occup Environ Med, 75 (2018a), pp. 263-269
- Petersen, K.P., J.; Bonde, J.; Ebbelhoej, N.; Hansen J.
Mortality in a cohort of Danish firefighters; 1970-2014.
 Int Arch Occup Environ Health, 91 (2018b), pp. 759-766
- Pinkerton, L.; Bertke, S.; Yiin, J.; Dahm, M.; Kubales, T.; Hales, T.; Purdue, M.; Beaumont, J.; Daniels, R. **Mortality in a cohort of US firefighters from San Francisco, Chicago and Philadelphia: an update** Occup Environ Med (2020)

- Pukkala, E.M., J.; Weiderpass, E.; Kjaerheim, K.; Lynge, E.; Tryggvadottir, L.; Sparén, P.; Demers P.
Cancer incidence among firefighters: 45 years of follow-up in five Nordic countries.
 Occup Environ Med, 71 (2014), pp. 398-404
- Schottenfeld, D.F., J.
Cancer epidemiology and prevention eds.
 New York, New York (2006)
- Silver SR, Tsai RJ, Morris CR, et al. **Codability of industry and occupation information from cancer registry records: Differences by patient demographics, casefinding source, payor, and cancer type.** Am J Ind Med, 61 (2018), pp. 524-532
- Soteriades, E.S.; Kim, J.; Christophi, C.; Kales, S.
Cancer Incidence and Mortality in Firefighters: A State-of-the-Art Review and Meta-Analysis. Asian Pac J Cancer Prev, 20 (2019), pp.3221-3231
- Sritharan, J.P., M.; Demers, P.; Harris, S.; Cole, D.; Parent, M.
Prostate cancer in firefighting and police work: a systematic review and meta-analysis of epidemiologic studies.
 Environ Health, 16 (2017), pp. 124
- Stec, A.A.; Dickens, K.E.; Salden, M.; Hewitt, F.E.; Watts, D.P.; Houldsworth, P.E.; Martin, F.L.
Occupational Exposure to Polycyclic Aromatic Hydrocarbons and Elevated Cancer Incidence in Firefighters.
 Sci Rep, 8 (2018), pp. 2476
- Tornling, G.G., P.; Hogstedt, C.
Mortality and cancer incidence in Stockholm fire fighters.
 Am J Ind Med, 25 (1994), pp. 219-228
- Tsai, R.J.; Luckhaupt, S.E.; Schumacher, P.; Cress, R.D.; Deapen, D.M.; Calvert, G.M.
Risk of cancer among firefighters in California, 1988-2007.
 Am J Ind Med, 58 (2015), pp. 715-729
- Vena, J.F., R.
Mortality of a municipal-worker cohort: IV. Fire fighters.
 Am J Ind Med, 11 (1987), pp. 671-684
- Wiencke, J.
Impact of race/ethnicity on molecular pathways in human cancer.
 Nat Rev Cancer, 4 (2004), pp. 79-84
- The Women's Health Initiative Study Group
Design of the Women's Health Initiative clinical trial and observational study. The Women's Health Initiative Study Group
 Control Clin Trials, 19 (1998), pp. 61-109
- Zahm, S.F., J.
Racial, ethnic, and gender variations in cancer risk: considerations for future epidemiologic research. Environ Health Perspect, 103 (1995), pp. 283-286
- Zhou, J.; Jenkins, T.G.; Jung, A.M.; Jeong, K.Y.; Zhai, J.; Jacobs, E.T.; Griffin, S.C.; Dearmon-Moore, D.; Littau, S.R.; Peate, W.F.; Ellis, N.A.; Lance, P.; Chen, Y.; Burgess, J.L.
DNA methylation among firefighters.
 PLOS One, 14(3) (2019), e0214282

ADDENDICES

Appendix A – NFR Design Flowcharts

Appendix B – NFR Promotional Campaign

Appendix C – List of Stakeholders

Appendix D – Informed Consent Document

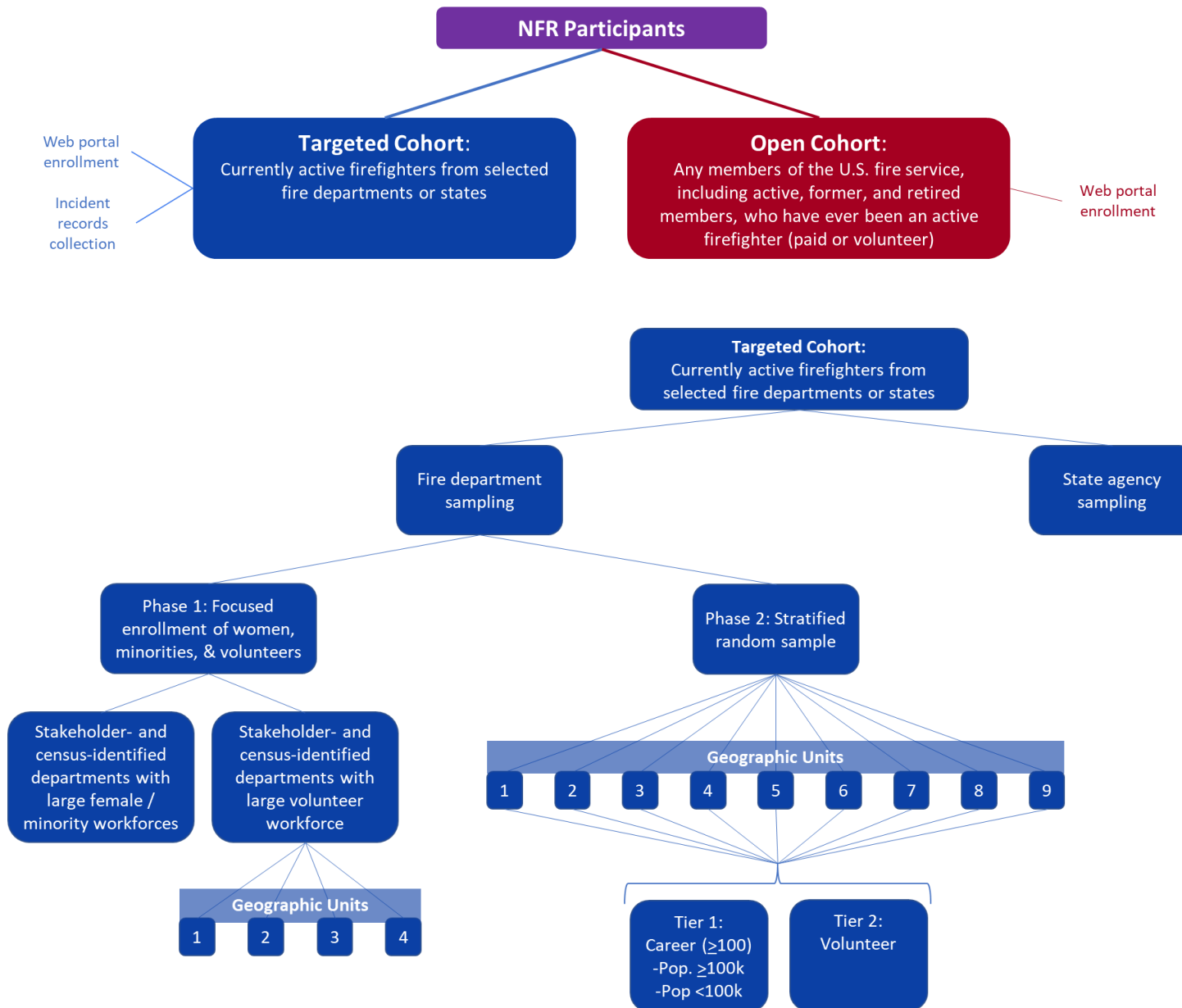
Appendix E – User Profile Questions

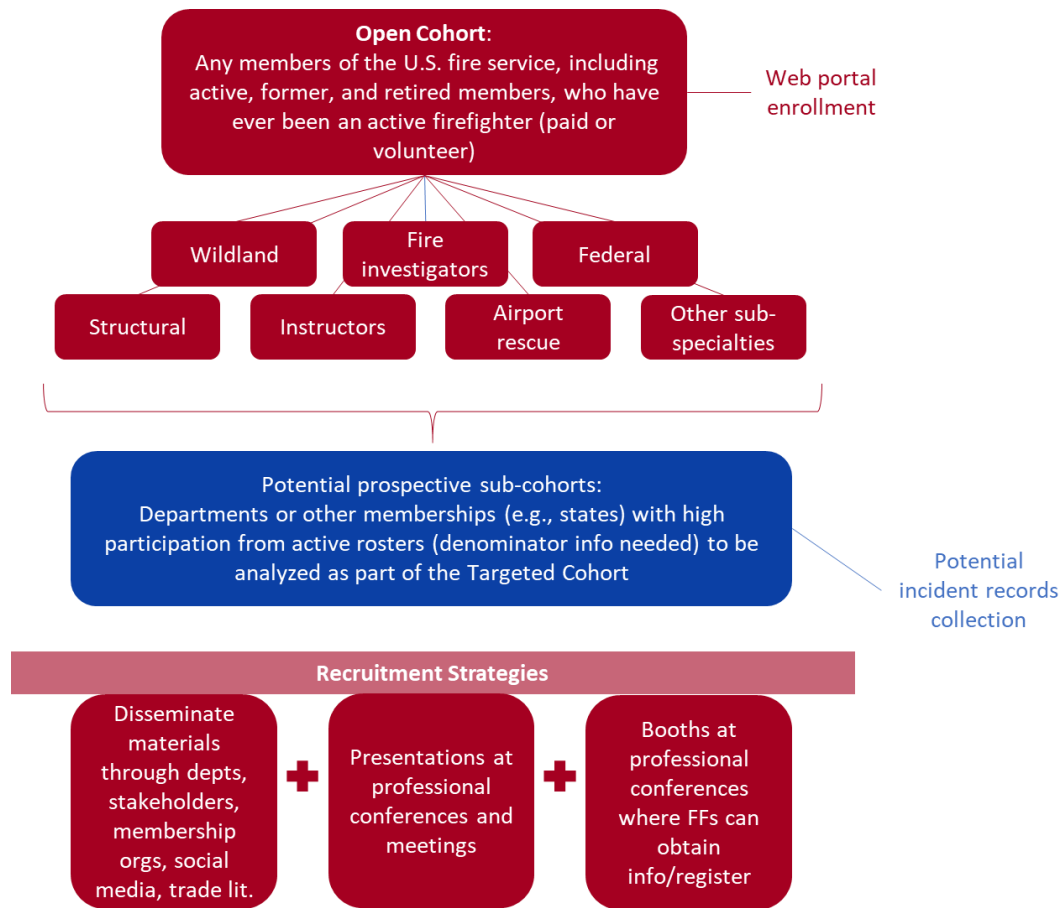
Appendix F – Enrollment Questionnaire

Appendix G – Assurance of Confidentiality

Appendix A – NFR Design Flowcharts

A.1. Recruitment Design and Example Sampling Strategy (Overall, Targeted Cohort, and Open Cohort)





A.2. Enrollment Process *



* Rosters can refer to individual or aggregate level information about a department's workforce.

Appendix B – NFR Promotional Campaign*

*As of 2024, the NFR Promotional Campaign has grown to include fact sheets, videos, posters, social media graphics, toolkits, and more. Below is an image of the resource page where publicly-available material can be downloaded and shared. These resources can be accessed at www.cdc.gov/NFR.

The screenshot shows the NIOSH website interface. At the top, the CDC and NIOSH logos are visible, along with a search bar. The main navigation menu on the left includes 'Firefighter Resources', 'Cancer and Other Illnesses', 'Exposure and Other Hazards', 'National Firefighter Registry', 'About the NFR', 'How the NFR Works', 'Frequently Asked Questions', 'Communication Materials', 'Firefighter Cancer Awareness Month Toolkit', and 'Gold Helmet Departments'. The 'Communication Materials' section is highlighted. The main content area features the title 'Communication Materials – National Firefighter Registry (NFR) for Cancer', a 'Print' link, and a paragraph: 'With your participation in the NFR, we can leave the fire service better than we found it. You can help make sure everyone in the fire service is represented by sharing the materials below with your network.' To the right of this text is the NFR logo, which includes a fire helmet with a ribbon and the text 'NATIONAL FIREFIGHTER REGISTRY for Cancer Understanding & Reducing Cancer'. Below the main text is an 'On This Page' section with a grid of links: 'NFR Promotion Kit', 'Fact Sheets', 'Fire Chief's Toolkit', 'Posters', 'Firefighter Cancer Awareness Month Toolkit', 'Other Print Materials', 'Fire Chief's Toolkit', 'Social Media Graphics', 'Videos', and 'Website Graphics'. At the bottom left, there is a 'Related Topics' section with links to 'Fighting Wildfires' and 'Personal Protective'.

Appendix C – Self-Identified List of Stakeholders*

*This is a list of organizations that participated in conversations with NIOSH or were otherwise involved in planning during the development of the NFR and is not meant to be an exhaustive list of all related stakeholders. This list will be updated periodically by NIOSH as the NFR progresses and new partnerships are established.

Organization
Boston Fire Department
Bureau of Indian Affairs
Cal Fire
California Department of Public Health
Cancer Institute and Infusion Center
Chicago Fire Department
Commonweal Biomonitoring Resource Center
Congressional Fire Services Institute
Fairfax Fire and Rescue
Fire Department Instructors Conference
Fire Department of New York (FDNY)
Firefighter Cancer Support Network
Firehouse Magazine
First Responder Center for Excellence for Reducing Occupational Illness, Injuries and Deaths, Inc.
Hanover Park Fire Department
Howard County Fire and Rescue
Idaho Cancer Registry
Illinois Fire Service Institute
Independence Fire District
International Association of Black Professional Fire Fighters
International Association of Fire Chiefs
International Association of Fire Fighters
International Association of Fire Fighters Wildfire Division
International Association of Wildland Fire
International Association of Women in Fire & Emergency Services (Women in Fire)
Johns Hopkins University Bloomberg School of Public Health
Lebanon Fire District
Loveland-Symmes Fire Department
National Association of Hispanic Firefighters
National Fallen Firefighter Foundation
National Fire Protection Association
National Volunteer Fire Council
Nebraska Department of Health and Human Services

New York State Fire Prevention and Control
North American Association of Central Cancer Registries
North American Fire Training Directors
Oakland Fire Department
Portsmouth, New Hampshire Office of the Mayor
Rutgers School of Public Health
San Antonio Fire Department
Skidmore College
Tucson Fire Department
Underwriters Laboratories (UL) Firefighter Safety Research Institute
United States Department of Interior
United States Fire Administration
United States Forest Service
University of Arizona
University of Miami
University of Southern California
Wildfire Today
Yale School of Public Health

CDC estimates the average reporting burden for this collection of information as 5 minutes per response, including the time for reviewing instructions, searching existing data/information sources, gathering and maintaining the data/information needed, and completing and reviewing the collection of information. An agency may not conduct or sponsor, and a person is not required to respond to a collection of information unless it displays a currently valid OMB control number. Send comments regarding this burden estimate or any other aspect of this collection of information including suggestion for reducing the burden to CDC/ATSDR Information Collection Review Office, 1500 Clifton Road NE, MS D-74, Atlanta, Georgia 30333; ATTN: PRA (0920-XXXX).

National Firefighter Registry Consent Form

Key Information (Short Summary): The National Firefighter Registry (NFR) is a voluntary registry created to evaluate cancer trends in U.S. firefighters, including career, volunteer, seasonal, wildland, and paid-on-call firefighters. The NFR is administered by the National Institute for Occupational Safety and Health (NIOSH). The NFR tracks the health of its participants over time to evaluate cancer incidence and risk factors associated with firefighting, improve cancer prevention, and conduct public health activities for the benefit of firefighters. If you join the NFR, you will be asked to provide personal, health, lifestyle, and occupational information through a user profile and questionnaire in a secure web portal. Any firefighter can register regardless of health status. You can register in the NFR in 30–45 minutes by completing this consent form and enrollment questionnaire.

If you are diagnosed with cancer in the United States, your cancer will be automatically reported to the population-based cancer registry in the state or territory where you were living at the time of your diagnosis. NIOSH will match the personally identifiable information you provide in the NFR (such as name, date of birth, social security number) with this diagnosis information for the purposes of determining cancer status, cancer diagnosis information, and vital status.

NIOSH may also collect information about your work history (such as fire incidents attended, employment duration, and job titles held) from fire departments, federal or state agencies, or other entities to estimate your exposures. NIOSH will keep all your personal information confidential and protect it to the fullest extent allowed by federal law.

1	Who is administering the NFR?	NIOSH is a federal agency that studies worker safety and health. We are part of the U.S. Centers for Disease Control and Prevention (CDC), a component of the Department of Health and Human Services (HHS).
2	What is the purpose of the NFR?	The NFR aims to better understand the link between firefighting and cancer in the United States, and to equip the fire service and public health communities with knowledge to help them reduce cancer in firefighters. The NFR will also make de-identified data—data with name, address, and

		other identifying information removed—available, as appropriate, to the public including researchers, firefighters, and national fire service organizations to improve research efforts on cancer incidence among firefighters.
3	Who is eligible for the NFR?	All adult members of the U.S. fire service (18 years of age or older), including active, former, and retired members, who have ever been an active firefighter will be eligible to join the NFR, regardless of whether they have been diagnosed with cancer. This includes career, volunteer, seasonal, wildland, and paid-on-call firefighters.
4	What is expected of me?	<p>After creating an account and signing this consent form, you will be asked to complete a user profile and enrollment questionnaire. The questions focus on basic demographic information, work history and exposures, other job information, health information, and other risk factors for cancer. It is critical that you complete the entire enrollment questionnaire to help NIOSH better understand the link between firefighting and cancer. Once you have registered, NIOSH will be able to track any potential cancer diagnoses using information from your user profile updates, and by matching your data to external databases such as population-based, or state, cancer registries. By signing this consent form, you give NIOSH permission to access any potential cancer information from these population-based cancer registries or databases (see Section 6 for more details).</p> <p>We will also send you occasional notifications, reminders, and follow-up questionnaires asking for additional details on your health or work as a firefighter. Follow-up questionnaires are voluntary but important for understanding the relationship between firefighting and health status over time.</p> <p>We may also reach out to fire departments, federal or state agencies, or other entities to learn more about your fire responses such as the number and types of fire incidents attended. This will not require any action from you.</p> <p>If you separately track your exposures or participate in a study related to your occupation as a firefighter, you can request that this information be shared with NIOSH. This will help us understand how your exposures relate to cancer risk.</p>
5	What is the time commitment?	<p>You should be able to read and complete this consent form, a user profile, and the initial questionnaire in 30–45 minutes. All questions are optional, except for name, date of birth, and sex. If you do not have time to complete the questionnaire in one sitting, you can log off and finish it later. Once you finish, you are officially registered with the NFR.</p> <p>Because cancer can take years to develop, the NFR is designed to track cancer diagnoses and evaluate cancer risk factors over a long period of time. To do this, we will regularly send you voluntary but important follow-up questionnaires over time. We will also encourage you to update</p>

		<p>your NFR user profile whenever there is a change in your work status or assignment, legal name, email, or residential address.</p>
<p>6</p>	<p>Will my personal information be kept private?</p>	<p>Your personal information such as your name, address, or other information that identifies you will be labeled with a code number and stored in a secure place and protected with a password. Only authorized personnel who work with the NFR will know the code and be able to identify you if needed. NIOSH will protect this information to the fullest extent allowed by federal law.</p> <p>Your information will be kept in a system of records (SOR) (09-20-0147) under the Privacy Act of 1974 (Privacy Act), as amended, (5 U.S.C. § 552a). The Privacy Act governs the collection, maintenance, use, and dissemination of information about individuals that is maintained in systems of records (or groups of records) and is retrievable by an identifier, by federal agencies. The Privacy Act prohibits the release of your information maintained in such a system unless you provide written consent, or the disclosure is made under an exception listed in the statute or pursuant to a routine use in the SOR. Note, however, that any disclosure permitted by a Privacy Act exception or routine use may be prohibited by the Assurance of Confidentiality, which is further described below.</p> <p>As an additional layer of protection, your identifiable information will be covered by an Assurance of Confidentiality (AoC), as authorized by Section 308(d) of the Public Health Service Act.</p> <p>The purpose of the AoC is to limit the use of your identifiable information to only those purposes necessary for the NFR to fulfill its public health purpose. The AoC provides that identifiable information will be used only for the purposes stated in the AoC, and will not be disclosed or released without your consent. In addition, the AoC provides that none of your identifiable information will be disclosed to any individual or entity that does not have a professional relationship with NIOSH, even after death.</p>

All personnel who handle your identifiable information will pledge to follow a strict security and confidentiality protocol, participate in annual security training, and sign a Nondisclosure Agreement and Confidentiality Pledge.

For example, under the protection of section 308(d) of the Public Health Service Act:

- NIOSH cannot give your identifiable information to consumer advocacy groups.
- NIOSH cannot give your identifiable information to your insurance company.
- NIOSH cannot be forced to share your identifiable information for a lawsuit.
- NIOSH cannot release your identifiable information for use as evidence even if there is a court subpoena.

Data linkages for exposure and health outcome information

NIOSH may collect specific work history information (such as incidents attended, employment duration, and job titles held) to estimate the number and type of your exposures. To do this, we may need to provide your name, date of birth, organization name, and/or employee ID to federal, state, or fire departments or agencies, or other entities that maintain these records. This information would only be provided to these entities so they can locate your specific occupational exposure history records. No other information would be provided to these entities.

NIOSH will also obtain information about your cancer and health status, potential cancer diagnosis, and vital status over time through data linkages to population-based cancer registries and other health outcome databases such as the National Death Index (NDI) of CDC's National Center for Health Statistics (NCHS). To make these data linkages, NIOSH will need to submit certain pieces of information you provide in the NFR (such as name, date of birth, social security number) to institutions managing external or information databases including population-based cancer

		<p>registries, NDI, or other health-outcome databases. Your information will be transmitted through a secure mechanism, such as software programs that offer password encryption. NIOSH will maintain the information it acquires from these databases in the NFR. After the linkages have been made, the information that NIOSH provided for making the linkages will be destroyed by the institutions managing the external databases, either by routine protocol or through an agreement with NIOSH.</p> <p><u>Sharing of de-identified data</u></p> <p>One of the primary goals of the NFR is to share de-identified health and occupational information with the public, including researchers, firefighters, and national fire service organizations, while protecting your privacy. We will not give your name, address, or any other identifying personal or health information to anyone who is not part of the NFR project without your written permission. If external researchers want to analyze firefighter health and safety using NFR data, they will have to apply for access through the Research Data Center (RDC), an institution dedicated to protecting the confidentiality of survey respondents while providing access to restricted-use data. If a research proposal through the RDC is accepted, NIOSH will remove all directly identifying information (like name, address, social security number) from your record prior to release of select data.</p> <p>These measures will protect your identity while still enabling research on firefighting occupational hazards, cancer incidence within the firefighting population, ways to improve equipment and safety protocols, preventative measures for firefighters, and development of best work practices.</p>
7	<p>Is my participation voluntary?</p>	<p>The NFR is voluntary. No one can force you to register or submit information.</p> <p>If you change your mind and wish to withdraw from the NFR, simply contact NIOSH (NFRRegistry@cdc.gov) and you (and data about you) will be withdrawn from the registry and you will no longer be able to sign into</p>

		the NFR. Please note, however, that data provided for a specific study or analysis prior to your request cannot be withdrawn.
8	Are there direct benefits to me?	Participants will receive no direct benefits from registering in the NFR. Findings from the NFR, however, may increase scientific understanding of how firefighting exposures relate to cancer.
9	Are there risks associated with participating in the NFR?	You may experience stress from participating in a study focused on cancer. While there is always a risk that data could be accidentally released, we have obtained the highest level of protection allowable for federal data and as provided by federal law. The NFR will minimize any privacy risks by requiring authentication during login, encrypting all data, storing your name and other identifiable information separately from your questionnaire responses or exposure data, and assigning a unique identifier to your personal data. See Section 6 above which explains additional privacy protections.
10	Will I or anyone else receive study results?	Analysis of the NFR data will result in scientific papers and reports. The papers and reports will summarize NIOSH’s findings and will never identify you or any other individual. These papers and reports will be provided to the public, fire service organizations and departments. NIOSH will also post any papers and reports on its website (www.cdc.gov/NFR) and make them available to NFR participants.. NIOSH will not release your individual data or individual study results to anyone without your written permission. See Section 6 for more details.
11	Who can I talk to if I have more questions?	Answers to frequently asked questions (FAQs) about the NFR are available at www.cdc.gov/NFR For additional questions, contact the NFR team at NFRRegistry@cdc.gov .
12	Your consent and signature	Regardless of whether you sign this form or register in the NFR, you are not giving away any legal rights or benefits to which you are otherwise entitled, and there will not be any effect on your employment, health care coverage, medical treatment, or insurance benefits. I have read and understand the content of the consent form. and understand what is required to be in the NFR, including how my information will be used and protected. I understand that by agreeing to participate, I will be contacted by the NFR periodically to voluntarily update my information. <input type="checkbox"/> I understand what is required of me to be in the NFR and agree to participate in the NFR. <input type="checkbox"/> I do not want to participate in the NFR.

CDC estimates the average reporting burden for this collection of information as 5 minutes per response, including the time for reviewing instructions, searching existing data/information sources, gathering and maintaining the data/information needed, and completing and reviewing the collection of information. An agency may not conduct or sponsor, and a person is not required to respond to a collection of information unless it displays a currently valid OMB control number. Send comments regarding this burden estimate or any other aspect of this collection of information including suggestion for reducing the burden to CDC/ATSDR Information Collection Review Office, 1500 Clifton Road NE, MS D-74, Atlanta, Georgia 30333; ATTN: PRA (0920-XXXX).

User Profile Questions

- What is your full name?
 - First: _____
 - Middle: _____
 - Last: _____
- Have you been known by any other name (example, maiden name)?
 - No
 - Yes
 - [If yes] Other? First Name _____ Other Last Name _____
- What is your current residential address?
 - Street: _____
 - Apt/Suite/Other _____
 - City: _____
 - State: (scrolling menu) _____
 - Zip code: _____
- We have the following email address listed above on file. Would you like to provide another email address that will be used to contact you if we cannot reach you at the primary email address?
 - _____
- If you would also like to receive updates via text message, please opt-in and provide your mobile number below
 - (xxx)xxx-xxxx
- What is your current work status in the fire service (select all that apply)?
 - Full time, paid
 - Part time, paid
 - Volunteer (full or part time)
 - Seasonal
 - Paid on call or paid per call
 - Retired
 - In what year did you retire (approximate date) ? _ _ _ _
 - No longer working in the fire service
 - In what year did you stop working in the fire service (approximate date)? _ _ _ _
 - Academy Student
 - Out on long-term disability
 - Other
 - If other, please specify _____

Appendix F – Enrollment Questionnaire

The enrollment questionnaire was previously updated as a separate document and published to the NFR Subcommittee website in March 2024. The March 2024 version is available at: <https://www.cdc.gov/niosh/scientific-counselors/nfrs.html> and provided below.

Attachment 3c. Questionnaire

* Information collected through the user profile questionnaire will be automatically uploaded to this questionnaire to reduce the burden on the firefighter.

Form Approved
OMB No. 0920-1348
Exp. Date 09/30/2024

CDC estimates the average reporting burden for this collection of information as 20 minutes per response, including the time for reviewing instructions, searching existing data/information sources, gathering and maintaining the data/information needed, and completing and reviewing the collection of information. An agency may not conduct or sponsor, and a person is not required to respond to a collection of information unless it displays a currently valid OMB control number. Send comments regarding this burden estimate or any other aspect of this collection of information including suggestion for reducing the burden to CDC/ATSDR Information Collection Review Office, 1500 Clifton Road NE, MS D-74, Atlanta, Georgia 30333; ATTN: PRA (0920-1348).

**National Firefighter Registry (NFR)
Enrollment Questionnaire**

Demographics

1. First Name _____ (auto-populates from user profile)

~~es 18 years of age or younger than 18
allowing dialogue will appear. According to
th, you are younger than 18 years of age,
you are not eligible to be in the NFR or BNS
and are ineligible where you have reached
or older.~~

~~7. State of Birth _____ Country of Birth _____
City of Birth _____
8. Zip Code _____
9. Employer _____ Department _____ State _____ Country _____
recent position _____
10. Country of Birth _____ State/Territory of Birth _____
City of Birth _____
11. Month of Birth (Dropdown) _____ Day of Birth _____
(Dropdown) _____ Year of Birth (Numerical fill in) _____~~

~~If a user is under
years old, the N
your date of bir
th, you are not
eligible to be in
the NFR or BNS
and are ineligible
where you have
reached or older.~~

- 7. Sex Assigned at Birth?
 - Male
 - Female
- 8. Ethnicity- Are you Hispanic or Latino?
 - Yes, I am Hispanic or Latino
 - No, I am not Hispanic or Latino
- 9. Race- select one or more
 - American Indian or Alaska Native
 - Asian
 - Black or African American
 - Native Hawaiian or Other Pacific Islander
 - White
- 10. What is the highest grade or year of school you completed?
 - Never attended school or only attended kindergarten
 - Grades 1 through 8 (Elementary)
 - Grades 9 through 11 (Some high school)
 - Grade 12 or GED (High school graduate)
 - College for 1 year to 3 years (Some college or technical school)

- College for 4 years or more (College graduate or advanced graduate education)
 - Prefer not to answer
11. What is your marital status? (Dropdown)
- Married
 - Living with a partner as an unmarried couple
 - Never married
 - Divorced
 - Separated
 - Widowed
 - Prefer not to answer
12. What is your height? (Dropdown) _____ feet _____ inches
13. What is your current weight? (Numerical Fill-in) _____ pounds (if pregnant, please report pre-pregnancy weight)
14. In the United States, each state has a cancer registry that collects and combines information on all cancer diagnoses from all hospitals in that state. Providing the last four digits of your social security number (SSN) will increase the likelihood of linking your profile and questionnaire information to any past or potentially future cancer diagnosis reported to a state. This information is necessary to meet the statutory requirements of the Firefighter Cancer Registry Act of 2018. You can choose to provide this information or not. As noted on the informed consent, all your private information will be encrypted, secured, and protected to the fullest extent allowed by law.

[Pop-up box if user clicks "why are we asking this"]

Why are we asking for this?

We need to track firefighters' health over time to truly understand their cancer risks and improve their protections. Sharing the last four digits of your social security number will let us do this by linking your information to state cancer registries. With this information we can see any potential future cancer diagnosis without any further action from you. Each firefighter that shares this information will increase the accuracy of our findings, which could potentially lead to greater protections for all firefighters. Sharing the last four digits of your social security number will ensure your participation has the maximum impact.

We will protect your information to the fullest extent allowed by law. The National Firefighter Registry is covered by an Assurance of Confidentiality, which is the highest level of protection available for identifiable information. Under this formal protection, we are not allowed to share your identifiable information without your written permission.

- SSN: XXX-XX-____ (link: why are we asking this?)
- Confirm SSN: XXX-XX-____

Work and Exposure

Please answer the following questions on your work history. Please include both volunteer and

ice?

merical fill-in] _____

se provide more details about your time in
ost recent department and end with the first
estion 16]

gency, or organization?

How many years or months did you work for each department?

15. What is the total amount of time you have worked in the fire serv

- _____ years OR _____ months

16. In what year did you first work as a firefighter? _____

17. How many fire departments or agencies have you worked at? [nu
You have worked for X departments starting in the year XXXX. Plea
these departments by filling out the records below. Start with your m
department you worked for. [X auto-populated with response from q

18. What is the name of your current or most recent department, ag

- [Drop down and/or free text that autopopulates from database of departments based on the state that was selected state]
 - [If manually entered] What state is this department located? [Drop down menu of states]
 - [If manually entered] What jurisdiction do/did you serve at this department, agency, or organization? (dropdown menu, select all that apply)
 - Federal
 - Military
 - State
 - City
 - County
 - District
 - Private
 - Tribal
 - Other
 - [if other, please describe] _____
- At X department/agency/organization (auto-populated)?
 - Approximate year started working [Fill-in 4 digit year]__ __ __ __]
 - Approximate year stopped working [Fill-in 4 digit year or select currently working at this department/agency] __ __ __ __
- Tell us about the job titles you've held at X department/agency/organization (select all that apply).
 - Structural or Industrial Firefighter (select type)
 - Firefighter
 - Firefighter/Medical (e.g., EMT, Paramedic)
 - Driver/Engineer/Operator
 - Company Officer (Lt, Cpt, Sgt)
 - Chief (select type)
 - Fire Chief/Commissioner
 - Battalion/District Chief
 - Assistant Chief
 - Deputy Chief
 - Division Chief
 - Wildland Firefighter (select type)
 - Engine crew
 - Hand crew
 - Line medic
 - Base camp support staff
 - Smoke jumper
 - Aviation Crew
 - Wildland Supervisor or Overhead
 - Superintendent/Crew Boss
 - Fire Marshal
 - Fire Investigator, where this is your primary job assignment
 - Instructor, where this is your primary job assignment
 - EMT/Paramedic, where this is your primary job assignment

- Other
 - Please specify _____
- Of the job titles you selected, please tell us more about them:
 - **Job title X** [Auto-populated from question above]
 - Approximate year started working: [Fill-in 4- digit year] ____ _
 - Approximate year stopped working: [Fill-in 4-digit year or select currently working in this position] ____ _
 - What best describes this position?
 - Full time
 - Part time
 - Volunteer
 - Seasonal
 - Paid on call or paid per call
 - Other
 - [if other, please specify] _____

*[*This question would repeat for each job title selected]*

- Did you respond to fires or hazmat incidents during your time as X (job title auto-populated with information above)? (Yes/No) (dropdown menu)
 - No
 - Yes

time as X at XX? (auto-

- (If yes) What types of fire or hazmat incidents did you respond to during your time as X at XX? (auto-populates with job title and department name) (select all that apply)
 - Structural Fires
 - Vehicle Fires
 - Outside Rubbish Fires or Dumpster Fires
 - Live-Fire Training/Instruction
 - Fire Investigation (post-extinguishment)
 - Vegetation/Brush Fires (not including wildland fires)
 - Wildland Fires or Wildland Prescribed Burns
 - Wildland Urban Interface Fires
 - Industrial Fires
 - Aircraft Crash Rescue
 - Marine Vessel Fires

HAZMAT Response/Spill

- How many times did you respond to HAZMAT incidents during your time as X at XX? (auto-populates with job title and department name) (select all that apply)
 - Structural Fires
 - [fill in with numerical values only] _____ Average number per year
 - I've responded to this, but less than once per year
 - Vehicle Fires

- [fill in with numerical values only] _____ Average number per year
 - I've responded to this, but less than once per year
- Outside Rubbish Fires or Dumpster Fires
 - [fill in with numerical values only] _____ Average number per year
 - I've responded to this, but less than once per year
- Live-Fire Training/Instruction
 - [fill in with numerical values only] _____ Average number per year
 - I've responded to this, but less than once per year
- Fire Investigation (post-extinguishment)
 - [fill in with numerical values only] _____ Average number per year
 - I've responded to this, but less than once per year
- Vegetation/Brush Fires (not including wildland fires)
 - [fill in with numerical values only] _____ Average number per year
 - I've responded to this, but less than once per year
- Wildland Fires or Wildland Prescribed Burns
 - [fill in with numerical values only] _____ Average number per year
 - I've responded to this, but less than once per year
 - (Always display, no conditions) On average, approximately how many days do you/did you spend actively responding to wildland fires in a year? _____
- Wildland Urban Interface Fires
 - [fill in with numerical values only] _____ Average number per year
 - I've responded to this, but less than once per year
- Industrial Fires
 - [fill in with numerical values only] _____ Average number per year
 - I've responded to this, but less than once per year
- Aircraft Crash Rescue [dropdown menu]
 - [fill in with numerical values only] _____ Average number per year
 - I've responded to this, but less than once per year
- Marine Vessel Fires
 - [fill in with numerical values only] _____ Average number per year
 - I've responded to this, but less than once per year
- Informal Settlement Fires (e.g., communities of people experiencing homelessness)
 - [fill in with numerical values only] _____ Average number per year
 - I've responded to this, but less than once per year
- HAZMAT Response/Spill
 - [fill in with numerical values only] _____ Average number per year
 - I've responded to this, but less than once per year

*[*The three questions above would repeat for each job title selected]*

*[*If more than one department was noted in Question 17, the questionnaire would return to Question 18, but with slightly different wording (below)]*

What is the name of your **2nd most recent** department, agency, or organization?

*[*This would repeat "3rd most recent, etc." for the total number of departments listed in Question 17]*

19. Have you implemented the following practices on a regular basis (most of the time) at any point in your career?

- Yes
 - What year did you start doing this regularly? [year – numerical fill-in]
Include checkbox “I’ve always done this”
- No
- N/A
- Wear SCBA during external fire attack of a structural/industrial fire
 - Yes
 - What year did you start doing this regularly? [year – numerical fill-in]
Include checkbox “I’ve always done this”
 - No
 - N/A
- Wear SCBA or an air purifying respirator with multi-chemical canister/cartridge during overhaul of a structural/industrial fire
 - Yes
 - What year did you start doing this regularly? [year – numerical fill-in]
Include checkbox “I’ve always done this”
 - No
 - N/A
- Wear SCBA or an air purifying respirator with multi-chemical canister/cartridge during vehicle fires
 - Yes
 - What year did you start doing this regularly? [year – numerical fill-in]
Include checkbox “I’ve always done this”
 - No
 - N/A

Wear SCBA or air purifying respirator with multi-chemical canister/cartridge or filtering facepiece (example, N95 mask) during structural/industrial fires

Wear SCBA or air purifying respirator

- Yes
 - What year did you start doing this regularly? [year – numerical fill-in]
Include checkbox “I’ve always done this”
- No
- N/A

Wear SCBA or air purifying respirator with multi-chemical canister/cartridge or filtering facepiece or during wildland fire suppression

Wear air respirator

- Yes
 - What year did you start doing this regularly? [year – numerical fill-in]
Include checkbox “I’ve always done this”
- No
- N/A

Wear SCBA, air purifying respirator with multi-chemical canister/cartridge, or filtering facepiece or (example, N95 mask) while performing or attending fire investigations

Wear SCBA or air purifying respirator

- Yes
 - What year did you start doing this regularly? [fill in year] Include checkbox “I’ve always done this”
- No
- N/A

Wear SCBA or air purifying respirator with multi-chemical canister or cartridge when responding and/or at urban interface fires

Wear SCBA or air purifying respirator

- Yes
 - What year did you start doing this regularly? [year – numerical fill-in]
Include checkbox “I’ve always done this”
- No
- N/A

- No
- N/A
- Wear a protective hood during interior fire response
 - Yes
 - What year did you start doing this regularly? [year – numerical fill-in]
Include checkbox “I’ve always done this”
 - No
 - N/A
- Conduct preliminary exposure reduction of my PPE (on-scene gross decon of turnout gear)
 - Yes
 - What year did you start doing this regularly? [year – numerical fill-in]
Include checkbox “I’ve always done this”
 - No
 - N/A
- Keep used PPE out of passenger compartment of vehicle
 - Yes
 - What year did you start doing this regularly? [year – numerical fill-in]
Include checkbox “I’ve always done this”
 - No
 - N/A
- Wash/wipe down equipment (radio, SCBA, tools, etc)
 - Yes
 - What year did you start doing this regularly? [year – numerical fill-in]
Include checkbox “I’ve always done this”
 - No
 - N/A
- Wash or clean my hands on-scene before taking in food or drink

Yes
 What year did you start doing this regularly? [year – numerical fill-in]
 Include checkbox “I’ve always done this”

- No
- N/A

Clean your exposed skin on scene after a fire response (use skin wipes or other cleansing method)

Yes
 What year did you start doing this regularly? [year – numerical fill-in]
 Include checkbox “I’ve always done this”

- No
- N/A

If possible, showering after responding to a fire scene

If possible, showering at home
 (not at work)

Yes

What year did you start doing this regularly? [year – numerical fill-in]
 Include checkbox “I’ve always done this”

What year did you start doing this regularly? [year – numerical fill-in]
 Include checkbox “I’ve always done this”

No

How often do you shower after using turnout gear? (at home)

N/A

How often do you shower after using turnout gear? (at home)

Yes

[If selected] What year did you start doing this regularly? (year – numerical fill-in) Include checkbox “I’ve always done this”

No

[if “no” selected] Approximately how frequently do you/did launder your hood?

- Every 1-2 weeks
- Every 1-2 months
- Quarterly (4 times a year)

- Annually
- Less than once a year
- Never

[If selected any option other than never] What year did you start doing this regularly? (year – numerical fill-in) Include checkbox “I’ve always done this”

[If selected any option other than never] What year did you start doing this regularly? (year – numerical fill-in) Include checkbox “I’ve always done this”

How frequently do you launder your turnout gear or other fire-response clothing?

Have turnout gear or other fire-response clothing laundered after every or almost every fire response?

Yes

[If selected] What year did you start doing this regularly? (year – numerical fill-in) Include checkbox “I’ve always done this”

How frequently do you launder your turnout gear or other fire-response clothing? (year – numerical fill-in) Include checkbox “I’ve always done this”

How do you launder your turnout gear or other fire-response clothing?

Take it home

Send out via contracted service

Wash it at the station

Take to a laundromat

Department central location (example, Headquarters, Shop, Quartermaster, etc.)

Other

[If other] Please explain _____

- [If selected] How frequently do you launder your turnout gear or other fire-response clothing?
- Every 1-2 weeks
- Every 1-2 months

- Annually
- Twice a year
- Annually
- Less than once a year
- Never

[If selected any option other than never] What year did you start doing this regularly? (year – numerical fill-in) Include checkbox “I’ve always done this”

[If selected any option other than never] How do you/did you launder your PPE?

- Take it home
- Send out via contracted service
- Wash it at the station
- Take to a laundromat
- Department central location (example, Headquarters, Shop, Quartermaster, etc.)

- Other
- [If other] Please explain _____

○ N/A

20. Have you ever served in the U.S. Armed Forces or other uniformed services?

- Yes
 - Are you currently serving?
 - Yes
 - No
 - Did you ever serve in a combat or war zone?
 - Yes
 - No

○ No, never served in the U.S. Armed Forces or other uniformed services

21. Have you ever held another job for 6 months or more while also working in the fire service?

- No
- Unsure
- Yes
 - For your job that overlapped with your fire service career the longest...
 - What kind of work do/did you do? (for example, registered nurse, janitor, cashier, auto mechanic) _____ (fill-in, open text)
 - What kind of business or industry do/did you work in? (for example, hospital, elementary school, clothing manufacturing, restaurant) _____ (fill-in, open text)
 - What year did you begin that job? [year – numerical fill-in]
 - Are you currently employed in that job?
 - No
 - What year did you end that job? [year – numerical fill-in]
 - Yes

22. Over your lifetime, have you ever held a non-firefighting job (or jobs) for at least 100 days or more where you were routinely exposed to smoke, exhaust, or chemicals?

- No
- Unsure
- Yes

Please answer the next group of questions based on your current (for current firefighters) or most recent assignment (for former/retired firefighters).

23. What is/was your typical shift configuration?

- 24 hours on/48 hours off
- 24 hours on/72 hours off
- 48 hours on/96 hours off
- 24 hours on/24 hours off/24 hours on/24 hours off/24 hours on/4 days off (Kelly shift)
- 72 hours on/96 hours off
- 9 hours on/15 hours off
- 10 hours on/14 hours off
- 10 hours, 4 days per week
- 12 hours on/12 hours off
- 8 hours on, 5 days per week, unless deployed
- 5-6 (5-24 hour shifts, 6 days off)

- On-call
- Volunteer, on-call continuously
- Seasonally deployed
- Other
 - [If other] Please specify _____

24. On average, how many calls do you/did you run in a shift?

- [dropdown with numerical options starting with 0-20] _____
- I don't operate on shift

25. On average, how many hours of uninterrupted sleep do you/did you get in a 24-hour period when on duty or on call?

- [dropdown with numerical options ranging from 0-24] _____

26. On average, how many hours of uninterrupted sleep do you/did you get in a 24-hour period when you are not/were not on duty or on call?

- [dropdown with numerical options ranging from 0-24] _____

27. Throughout your entire career, have you ever used Aqueous Film-Forming Foam (AFFF)?

- No
- Yes

Approximately how many times have you used AFFF (please include all uses such as training, fire suppression, maintenance, etc.)? (numerical fill in) _____

28. Throughout your career, have you responded to any major events that you would consider unusual in duration or intensity? These events could include: natural disasters, acts of terrorism, industrial events, extreme wildland disasters, etc.

- No

Yes

Unsure

[If yes] Please tell us more about this/these major event(s):

Event 1: How would you classify the first event? [repeats for each event]

- Natural disaster
- Chemical
- Industrial/Factory
- Wildland
- Vegetation
- Structural
- Terrorist Event
- Other

[If other] Please specify _____

How long was your personal response to this event? [repeats for each event]
 _____ days OR [dropdown menu for days] _____ hours [dropdown for hours]

Was this a named event? (example, 9/11, Hurricane Katrina) [repeat for each event]

- No
- Yes

[If yes] What was this event commonly known as?

Event 2: How would you classify the second event? [repeats for each event]

Natural disaster

nt]
 menu
 ach
 nt]

- Chemical
- Industrial/Factory
- Wildland
- Vegetation

Terrorist event

Other

[If other] Please specify _____

- How long was your personal response to this event? [repeat for each event]
- Was this a named event? (example, 9/11, Hurricane Katrina) [repeat for each event]
 - No
 - Yes
- [If yes] What was this event commonly known as? _____

ery

do you get an NFPA 1582 compliant or other comprehensive occupational physical exam?

usually

ce every 2-3 years

o not routinely have an occupational physical exam

fer not to answer

do you see a health care provider for a routine check-up?

usually

ce every 2-3 years

o not see a health care provider routinely

fer not to answer

Participants age 40+] There are different kinds of tests to check for colon or rectal cancer, including _____, sigmoidoscopy, and stool-based tests. Have you ever had a test to check for colon or rectal _____

Yes

- [If yes] Approximately how old were you when you had your first test to check for colon or rectal cancer? (numerical fill-in)
- [If yes] About how long has it been since your most recent test to check for colon or rectal cancer?
 - Within the past year (anytime less than 12 months ago)
 - Within the past 2 years (1 year but less than 2 years ago)
 - Within the past 3 years (2 years but less than 3 years ago)
 - Within the past 5 years (3 years but less than 5 years ago)
 - Within the past 10 years (5 years but less than 10 year ago)
 - 10 years ago or more
 - Unsure
 - Prefer not to answer

No

Unsure

Prefer not to answer

Health Histo

29. How often

- An
- On
- I d
- Pre

30. How often

- An
- On
- I d
- Pre

31. [ask to part
colonoscop
cancer?]

-

32. [ask to males age 40+] A PSA is a blood test to detect prostate cancer. It is also called a prostate-specific antigen test. Have you ever had a PSA test?

<p>Q12. Are you?</p>	<p>Yes</p> <p>(100%) [Aggravation caused by lower total serum prostate specific antigen (PSA) level?]</p> <p>(100%) [I have long been a heavy smoker. Have you ever had a PSA test?]</p> <ul style="list-style-type: none"> <input type="radio"/> Yes (never had a PSA test) <input type="radio"/> Yes (1-2 years ago) <input type="radio"/> Yes (3-5 years ago) <input type="radio"/> Yes (6-10 years ago) <input type="radio"/> Yes (11-15 years ago) <input type="radio"/> Yes (16-20 years ago) <input type="radio"/> Yes (21-25 years ago) <input type="radio"/> Yes (26-30 years ago) <input type="radio"/> Yes (31-35 years ago) <input type="radio"/> Yes (36-40 years ago) <input type="radio"/> Yes (41-45 years ago) <input type="radio"/> Yes (46-50 years ago) <input type="radio"/> Yes (51-55 years ago) <input type="radio"/> Yes (56-60 years ago) <input type="radio"/> Yes (61-65 years ago) <input type="radio"/> Yes (66-70 years ago) <input type="radio"/> Yes (71-75 years ago) <input type="radio"/> Yes (76-80 years ago) <input type="radio"/> Yes (81-85 years ago) <input type="radio"/> Yes (86-90 years ago) <input type="radio"/> Yes (91-95 years ago) <input type="radio"/> Yes (96-100 years ago) <input type="radio"/> No <input type="radio"/> Prefer not to answer <p><input type="radio"/> No</p> <p><input type="radio"/> Unknown</p>
<p>Q13. Have you ever had a PSA test?</p> <p>Q14. [ask to females age 25+] When/has been the most likely time you had a PSA test?</p> <p><input type="radio"/> Yes</p> <p>(100%) [Aggravation caused by lower total serum prostate specific antigen (PSA) level?]</p> <p>(100%) [I have long been a heavy smoker. Have you ever had a PSA test?]</p> <ul style="list-style-type: none"> <input type="radio"/> Yes (never had a PSA test) <input type="radio"/> Yes (1-2 years ago) <input type="radio"/> Yes (3-5 years ago) <input type="radio"/> Yes (6-10 years ago) <input type="radio"/> Yes (11-15 years ago) <input type="radio"/> Yes (16-20 years ago) <input type="radio"/> Yes (21-25 years ago) <input type="radio"/> Yes (26-30 years ago) <input type="radio"/> Yes (31-35 years ago) <input type="radio"/> Yes (36-40 years ago) <input type="radio"/> Yes (41-45 years ago) <input type="radio"/> Yes (46-50 years ago) <input type="radio"/> Yes (51-55 years ago) <input type="radio"/> Yes (56-60 years ago) <input type="radio"/> Yes (61-65 years ago) <input type="radio"/> Yes (66-70 years ago) <input type="radio"/> Yes (71-75 years ago) <input type="radio"/> Yes (76-80 years ago) <input type="radio"/> Yes (81-85 years ago) <input type="radio"/> Yes (86-90 years ago) <input type="radio"/> Yes (91-95 years ago) <input type="radio"/> Yes (96-100 years ago) <input type="radio"/> No <input type="radio"/> Unknown <input type="radio"/> Prefer not to answer <p><input type="radio"/> No</p> <p><input type="radio"/> Unknown</p> <p><input type="radio"/> Prefer not to answer</p>	<p>Q15. [ask to females age 30+] A recent diagnosis of a lung disease study of the the breast. Have you ever had a PSA test?</p> <p><input type="radio"/> Yes</p> <p>(100%) [Aggravation caused by lower total serum prostate specific antigen (PSA) level?]</p> <p>(100%) [I have long been a heavy smoker. Have you ever had a PSA test?]</p> <ul style="list-style-type: none"> <input type="radio"/> Yes (never had a PSA test) <input type="radio"/> Yes (1-2 years ago) <input type="radio"/> Yes (3-5 years ago) <input type="radio"/> Yes (6-10 years ago) <input type="radio"/> Yes (11-15 years ago) <input type="radio"/> Yes (16-20 years ago) <input type="radio"/> Yes (21-25 years ago) <input type="radio"/> Yes (26-30 years ago) <input type="radio"/> Yes (31-35 years ago) <input type="radio"/> Yes (36-40 years ago) <input type="radio"/> Yes (41-45 years ago) <input type="radio"/> Yes (46-50 years ago) <input type="radio"/> Yes (51-55 years ago) <input type="radio"/> Yes (56-60 years ago) <input type="radio"/> Yes (61-65 years ago) <input type="radio"/> Yes (66-70 years ago) <input type="radio"/> Yes (71-75 years ago) <input type="radio"/> Yes (76-80 years ago) <input type="radio"/> Yes (81-85 years ago) <input type="radio"/> Yes (86-90 years ago) <input type="radio"/> Yes (91-95 years ago) <input type="radio"/> Yes (96-100 years ago) <input type="radio"/> No <input type="radio"/> Unknown <input type="radio"/> Prefer not to answer <p><input type="radio"/> No</p> <p><input type="radio"/> Unknown</p> <p><input type="radio"/> Prefer not to answer</p>
<p>Q16. Have you ever had a PSA test?</p> <p>Q17. [ask to females age 35+] A recent diagnosis of a lung disease study of the the breast. Have you ever had a PSA test?</p> <p><input type="radio"/> Yes</p> <p>(100%) [Aggravation caused by lower total serum prostate specific antigen (PSA) level?]</p> <p>(100%) [I have long been a heavy smoker. Have you ever had a PSA test?]</p> <ul style="list-style-type: none"> <input type="radio"/> Yes (never had a PSA test) <input type="radio"/> Yes (1-2 years ago) <input type="radio"/> Yes (3-5 years ago) <input type="radio"/> Yes (6-10 years ago) <input type="radio"/> Yes (11-15 years ago) <input type="radio"/> Yes (16-20 years ago) <input type="radio"/> Yes (21-25 years ago) <input type="radio"/> Yes (26-30 years ago) <input type="radio"/> Yes (31-35 years ago) <input type="radio"/> Yes (36-40 years ago) <input type="radio"/> Yes (41-45 years ago) <input type="radio"/> Yes (46-50 years ago) <input type="radio"/> Yes (51-55 years ago) <input type="radio"/> Yes (56-60 years ago) <input type="radio"/> Yes (61-65 years ago) <input type="radio"/> Yes (66-70 years ago) <input type="radio"/> Yes (71-75 years ago) <input type="radio"/> Yes (76-80 years ago) <input type="radio"/> Yes (81-85 years ago) <input type="radio"/> Yes (86-90 years ago) <input type="radio"/> Yes (91-95 years ago) <input type="radio"/> Yes (96-100 years ago) <input type="radio"/> No <input type="radio"/> Unknown <input type="radio"/> Prefer not to answer <p><input type="radio"/> No</p> <p><input type="radio"/> Unknown</p> <p><input type="radio"/> Prefer not to answer</p>	<p>Q18. [ask to females age 40+] A recent diagnosis of a lung disease study of the the breast. Have you ever had a PSA test?</p> <p><input type="radio"/> Yes</p> <p>(100%) [Aggravation caused by lower total serum prostate specific antigen (PSA) level?]</p> <p>(100%) [I have long been a heavy smoker. Have you ever had a PSA test?]</p> <ul style="list-style-type: none"> <input type="radio"/> Yes (never had a PSA test) <input type="radio"/> Yes (1-2 years ago) <input type="radio"/> Yes (3-5 years ago) <input type="radio"/> Yes (6-10 years ago) <input type="radio"/> Yes (11-15 years ago) <input type="radio"/> Yes (16-20 years ago) <input type="radio"/> Yes (21-25 years ago) <input type="radio"/> Yes (26-30 years ago) <input type="radio"/> Yes (31-35 years ago) <input type="radio"/> Yes (36-40 years ago) <input type="radio"/> Yes (41-45 years ago) <input type="radio"/> Yes (46-50 years ago) <input type="radio"/> Yes (51-55 years ago) <input type="radio"/> Yes (56-60 years ago) <input type="radio"/> Yes (61-65 years ago) <input type="radio"/> Yes (66-70 years ago) <input type="radio"/> Yes (71-75 years ago) <input type="radio"/> Yes (76-80 years ago) <input type="radio"/> Yes (81-85 years ago) <input type="radio"/> Yes (86-90 years ago) <input type="radio"/> Yes (91-95 years ago) <input type="radio"/> Yes (96-100 years ago) <input type="radio"/> No <input type="radio"/> Unknown <input type="radio"/> Prefer not to answer <p><input type="radio"/> No</p> <p><input type="radio"/> Unknown</p> <p><input type="radio"/> Prefer not to answer</p>

- Unsure
 - Prefer not to answer
 - No
 - Unsure
 - Prefer not to answer
35. Have you ever been diagnosed with cancer?
- No
 - Unsure if I have ever been diagnosed with cancer
 - Yes
 - [If yes] What type(s) of cancer were you diagnosed with? Please select where the cancer(s) started (primary site):
 - Bladder
 - [if selected] What was your age when first diagnosed? __ (fill-in)
 - In what state were you living when first diagnosed? (dropdown menu of US states, Washington D.C., territories, and other- please specify)
 - Prostate
 - [if selected] What was your age when first diagnosed? __ (fill-in)
 - In what state were you living when first diagnosed? (dropdown menu of US states, Washington D.C., territories, and other- please specify)
 - Brain or Central Nervous System
 - [if selected] What was your age when first diagnosed? __ (fill-in)
 - In what state were you living when first diagnosed? (dropdown menu of US states, Washington D.C., territories, and other- please specify)
 - Breast
 - [if selected] What was your age when first diagnosed? __ (fill-in)
 - In what state were you living when first diagnosed? (dropdown menu of US states, Washington D.C., territories, and other- please specify)
 - Cervix
 - [if selected] What was your age when first diagnosed? __ (fill-in)
 - In what state were you living when first diagnosed? (dropdown menu of US states, Washington D.C., territories, and other- please specify)
 - Colon or Rectum
 - [if selected] What was your age when first diagnosed? __ (fill-in)
 - In what state were you living when first diagnosed? (dropdown menu of US states, Washington D.C., territories, and other- please specify)
 - Esophagus
 - [if selected] What was your age when first diagnosed? __ (fill-in)
 - In what state were you living when first diagnosed? (dropdown menu of US states, Washington D.C., territories, and other- please specify)
 - Hodgkin's Lymphoma
 - [if selected] What was your age when first diagnosed? __ (fill-in)
 - In what state were you living when first diagnosed? (dropdown menu of US states, Washington D.C., territories, and other- please specify)
 - Kidney
 - [if selected] What was your age when first diagnosed? __ (fill-in)
 - In what state were you living when first diagnosed? (dropdown menu of US states, Washington D.C., territories, and other- please specify)
 - Larynx (e.g., voice box, vocal cords)
 - [if selected] What was your age when first diagnosed? __ (fill-in)

dropdown menu of US

n)
menu of US

n)

- In what state were you living when first diagnosed? (dropdown menu of US

Leukemia

ill that

? __

itories,

? __

itories,

? __

Living when first diagnosed?
(US states, Washington D.C., territories,
and other- please specify)

a (CLL)

What was your age when first

__ (fill-in)

were you living when first diagnosed?

(US states, Washington D.C., territories, and other- please specify)

] What was your age when first diagnosed? __

te were you living when first diagnosed?

.menu of US states, Washington D.C., territories,
and other- please specify)

: age when first diagnosed? __ (fill-in)

g when first diagnosed? (dropdown menu of US
territories, and other- please specify)

: age when first diagnosed? __ (fill-in)

g when first diagnosed? (dropdown menu of US
territories, and other- please specify)

: age when first diagnosed? __ (fill-in)

- [if selected] What type of leukemia were you diagnosed with (Select & apply)?

- o Acute myeloid (or myelogenous) leukemia (AML)

- [if selected] What was your age when first diagnosed? (fill-in)

- In what state were you living when first diagnosed? (dropdown menu of US states, Washington D.C., territories, and other- please specify)

- o Chronic myeloid (or myelogenous) leukemia (CML)

- [if selected] What was your age when first diagnosed? (fill-in)

- In what state were you living when first diagnosed? (dropdown menu of US states, Washington D.C., territories, and other- please specify)

- o Acute lymphocytic (or lymphoblastic) leukemia (ALL)

- [if selected] What was your age when first diagnosed? (fill-in)

- o In what state were you living when first diagnosed? (dropdown menu of US states, Washington D.C., territories, and other- please specify)

- o Chronic lymphocytic leukemia (CLL)

- [if selected] What was your age when first diagnosed? (fill-in)

- In what state were you living when first diagnosed? (dropdown menu of US states, Washington D.C., territories, and other- please specify)

- o Other or Unknown

- [if selected] What was your age when first diagnosed? (fill-in)

- In what state were you living when first diagnosed? (dropdown menu of US states, Washington D.C., territories, and other- please specify)

- Liver

- [if selected] What was your age when first diagnosed? (fill-in)

- In what state were you living when first diagnosed? (dropdown menu of US states, Washington D.C., territories, and other- please specify)

- Lung

- [if selected] What was your age when first diagnosed? (fill-in)

- In what state were you living when first diagnosed? (dropdown menu of US states, Washington D.C., territories, and other- please specify)

- Mesothelioma

- [if selected] What was your age when first diagnosed? (fill-in)

It (dropdown menu of US
also specify)

- [if selected] What was your age when first diagnosed? __ (fill-in)
- In what state were you living when first diagnosed? (dropdown menu of US states, Washington D.C., territories, and other- please specify)
- Flow: Hodgkin's Lymphoma
 - [if selected] What was your age when first diagnosed? __ (fill-in)
 - In what state were you living when first diagnosed? (dropdown menu of US states, Washington D.C., territories, and other- please specify)
- Oral Cavity or Pharynx (e.g., lip, tongue, palate, tonsil, other parts of the mouth)
 - [if selected] What was your age when first diagnosed? __ (fill-in)
 - In what state were you living when first diagnosed? (dropdown menu of US states, Washington D.C., territories, and other- please specify)
- Ovary
 - [if selected] What was your age when first diagnosed? __ (fill-in)
 - In what state were you living when first diagnosed? (dropdown menu of US states, Washington D.C., territories, and other- please specify)
- Pancreas
 - [if selected] What was your age when first diagnosed? __ (fill-in)
 - In what state were you living when first diagnosed? (dropdown menu of US states, Washington D.C., territories, and other- please specify)
- Prostate
 - [if selected] What was your age when first diagnosed? __ (fill-in)
 - In what state were you living when first diagnosed? (dropdown menu of US states, Washington D.C., territories, and other- please specify)
- Skin: Melanoma
 - [if selected] What was your age when first diagnosed? __ (fill-in)
 - In what state were you living when first diagnosed? (dropdown menu of US states, Washington D.C., territories, and other- please specify)
- Skin: Non-Melanoma (e.g., basal cell carcinoma, squamous cell carcinoma) or Unknown
 - [if selected] What was your age when first diagnosed? __ (fill-in)
 - In what state were you living when first diagnosed? (dropdown menu of US states, Washington D.C., territories, and other- please specify)
- Small Intestine
 - [if selected] What was your age when first diagnosed? __ (fill-in)
 - In what state were you living when first diagnosed? (dropdown menu of US states, Washington D.C., territories, and other- please specify)
- Stomach
 - [if selected] What was your age when first diagnosed? __ (fill-in)
 - In what state were you living when first diagnosed? (dropdown menu of US states, Washington D.C., territories, and other- please specify)
 - Testis
 - [if selected] What was your age when first diagnosed? __ (fill-in)

- In what state were you living when first diagnosed? (dropdown menu of US states, Washington D.C., territories, and other- please specify)
- Thyroid
 - [if selected] What was your age when first diagnosed? __ (fill-in)
 - In what state were you living when first diagnosed? (dropdown menu of US states, Washington D.C., territories, and other- please specify)
- Uterus/Endometrium
 - [if selected] What was your age when first diagnosed? __ (fill-in)
 - In what state were you living when first diagnosed? (dropdown menu of US states, Washington D.C., territories, and other- please specify)
- Unsure which cancer (primary site)
 - [if selected] What was your age when first diagnosed? __ (fill-in)
 - In what state were you living when first diagnosed? (dropdown menu of US states, Washington D.C., territories, and other- please specify)
- Other type of cancer
 - Please specify: _____
 - [if selected] What was your age when first diagnosed? __ (fill-in)
 - In what state were you living when first diagnosed? (dropdown menu of US states, Washington D.C., territories, and other- please specify)

36. Have you ever been told by a healthcare professional that you have the following conditions?

- Diabetes
- Yes
 - If yes, what type?
 - Type 1
 - Type 2
 - Gestational
 - Unsure
- High Blood Pressure
 - No
 - Yes
- High Cholesterol
 - No
 - Yes
- Overweight
 - No
 - Yes
- Obesity
 - No
 - Yes
- Rheumatoid Arthritis
 - No
 - Yes
- Asthma

- No
- Yes
- Emphysema
 - No
 - Yes
- Chronic Bronchitis
 - No
 - Yes
- Heart Disease (e.g. heart attack, heart failure, atherosclerosis)
 - No
 - Yes
- Stroke
 - No
 - Yes
- Sleep Apnea
 - No
 - Yes
- Insomnia
 - No
 - Yes
- Celiac Disease
 - No
 - Yes
- Inflammatory bowel disease
 - No
 - Yes
 - If yes, what type?
 - Crohn's Disease
 - Ulcerative Colitis
 - Unsure
 - Other
 - Please specify
- Colorectal Polyps
 - No
 - Yes
- Chronic Hepatitis (Hepatitis B, Hepatitis C)
 - No
 - Yes
- Post-Traumatic Stress Disorder
 - No
 - Yes
- Depression
 - No
 - Yes
- Anxiety
 - No
 - Yes

- Dementia
 - No
 - Yes
- Traumatic Brain Injury (concussion)
 - No
 - Yes
- Coronavirus Disease 2019 (COVID-19)
 - No
 - Yes

ing in 3 or more days away from work?

on injury resulting in the need for medical care (such as
sional consultation)?

cal children have a history of cancer?

ny biological children

iological children have a history of cancer

37. Have you ever experienced an injury resulti

- No
- Yes

38. Have you ever experienced a smoke inhalati
emergency department visit or health profes

- No
- Yes

39. Do any of your biologi

- I do not have a
- Unsure if my b
- No
- Yes

39. Do any of your biological children have a history of cancer?

- No
- Yes
 - Bladder
 - Brain or Central Nervous System
 - Breast
 - Cervix
 - Colon or Rectum
 - Esophagus
 - Hodgkin's Lymphoma
 - Kidney
 - Larynx (e.g., voice box, vocal cords)
 - Leukemia
 - Liver
 - Lung
 - Mesothelioma
 - Multiple Myeloma
 - Non-Hodgkin's Lymphoma
 - Oral Cavity or Pharynx (e.g., lip, tongue, palate, tonsil, other parts of the mouth)
 - Ovary
 - Pancreas
 - Prostate
 - Skin: Melanoma
 - Skin: Non-Melanoma (e.g., basal cell carcinoma, squamous cell carcinoma) or

o Stomach

Testis

Unsure which cancer (primary site)

Other

Please specify: _____

40. Do you have a family history of cancer among your other immediate biological (blood) relatives, including mother, father, and/or sibling(s)?

Unsure if I have a family history of cancer

No

Yes

[If yes] For these blood relatives, where did the cancer(s) start (primary site)?

Bladder

Brain or Central Nervous System

Breast

Cervix

Colon or Rectum

Esophagus

Hodgkin's Lymphoma

Ovary

Larynx (e.g., voice box, vocal cords)

Leukemia

Liver

Lung

Mesothelioma

Multiple Myeloma

Non-Hodgkin's Lymphoma

Oral Cavity or Pharynx (e.g., lip, tongue, palate, tonsil, other parts of the mouth)

Ovary

Pancreas

Prostate

Skin: Melanoma

Skin: Non-Melanoma (e.g., basal cell carcinoma, squamous cell carcinoma) or

Unknown

Small Intestine

Stomach

Testis

Thyroid

Uterus/Endometrium

Unsure which cancer (primary site)

Other

Please specify: _____

41. If answer to sex on question 9 is female (males will not see these questions): Have you ever been pregnant?

No

Yes

If yes, how many times have you been pregnant? (numerical fill-in)

How many of your pregnancies resulted in at least one live birth? (numerical fill-in)

- How old were you when your first pregnancy occurred? (numerical fill in, unsure, prefer not to answer)
- Have you ever breastfed?
 - No
 - Yes
 - Approximately how many months did you breastfeed in total for all births combined? ____months (numerical fill-in)
- Prefer not to answer
- Unsure
- Prefer not to answer
- 42. How old were you when you had your first menstrual period? (numerical fill-in) _____
 - Have never had a menstrual period
 - Unsure
 - Prefer not to answer
- 43. Has it been 12 months or more since you had your last menstrual period?
 - No
 - Yes
 - How old were you when you had your last period? (numerical fill-in and unsure)
 - Why did your menstrual periods stop?
 - Currently pregnant or nursing
 - Menstrual periods stopped naturally
 - Surgery (e.g., hysterectomy or oophorectomy)
 - Chemotherapy treatments
 - Hormonal contraceptives (birth control pill, shot, patch, intrauterine device, etc.)
 - Unsure
 - Other
 - Please specify _____
 - Have you used any female hormones for two months or more to treat hot flashes or other menopausal symptoms (such as Premarin or other estrogens)?
 - No
 - Yes
 - How old were you when you began using these medications? (numerical fill-in and unsure)
 - Altogether, for how many months or years in total have you used these medications? (numerical fill-in and unsure) ____months OR ____years
 - How old were you when you stopped using these medications? (numerical fill-in)
 - Currently using
 - Unsure
 - N/A
 - Unsure
 - Prefer not to answer
- 44. Have you ever used hormonal contraceptives for two months or more for any reason (birth control, acne, menstrual irregularity, endometriosis, polycystic ovarian syndrome, etc.)?
 - No
 - Yes
 - How old were you when you began using hormonal contraceptives? (numerical fill-in and unsure)
 - Altogether, for how many months or years have you used hormonal contraceptives? (numerical fill-in and unsure) ____months OR ____years
 - How old were you when you stopped using hormonal contraceptives? (numerical fill-in)
 - Currently using

- Unsure
- Prefer not to answer

Lifestyle

How often do you eat breakfast?

How often do you exercise (such as swimming, biking, brisk walking, or jogging) for at least 30 minutes per week not including

at least 2 days a week?

How often do you go out into the sun without sunscreen or protective clothing?

How many cigarettes and past uses with tobacco based products (one pack a day, five packs is equal to 100 cigarettes)?

How many cigarettes do you smoke? (numerical fill-in)

(numerical fill-in)

How many years did you smoke during those time periods when you had quit? (numerical fill-in)

How many cigarettes do you smoke? (numerical fill-in)

(numerical fill-in)

How many years did you smoke during those time periods when you had quit? (numerical fill-in)

How often do you use snuff, or dip regularly for a year or longer?

How often do you use smokeless tobacco (chewing tobacco, snuff, or dip) regularly for a year or longer?

45. In a typical week, do you perform physical activity that raises your heart rate (such as walking, jogging, rowing) for at least 150 minutes (2 hours and 30 minutes) per week not including firefighting response activities?

- Yes
- No
- Prefer not to answer

46. In a typical week, do you perform weight or strength training (such as lifting weights, using a gym, or using resistance bands)?

- Yes
- No
- Prefer not to answer

47. After several months of not being in the sun, if you then went back to being in the sun for one hour, which of these would happen to your skin?

- Get a severe sunburn with blisters
- Have a moderate sunburn with peeling
- Burn mildly with some or no darkening/tanning
- Turn darker without sunburn
- Nothing would happen to my skin
- Do not go out in the sun

48. How many blistering sunburns have you had in your lifetime?

- 0
- 1-5
- 6-10
- 10 or more

Please answer the next group of questions based on your current smoking status.

49. In your entire life, have you smoked 100 or more cigarettes (not counting past use)?

- Prefer not to answer
- No
- Yes, I currently smoke cigarettes
 - On average, about how many cigarettes a day do you smoke?
 - At what age did you first start smoking regularly?
 - How many years have you smoked, not counting time periods when you had quit?
- Yes, I formerly smoked cigarettes
 - On average about how many cigarettes a day did you smoke?
 - At what age did you first start smoking regularly?
 - How many years did you smoke, not counting time periods when you had quit?
 - How old were you when you last smoked a cigarette?

50. Did you ever use smokeless tobacco, such as chewing tobacco, snuff, or dip?

- Prefer not to answer

- No
 - Yes, I currently use smokeless tobacco regularly
 - On average, about how many dips per day do you use? (numerical fill-in)
 - At what age did you first start using smokeless tobacco regularly? (numerical fill-in)
 - How many years have you used smokeless tobacco, not counting time periods when you had quit? (numerical fill-in)
 - Yes, I formerly used smokeless tobacco regularly
 - On average about how many dips per day did you use? (numerical fill-in)
 - At what age did you first start using smokeless tobacco regularly? (numerical fill-in)
 - How many years did you use smokeless tobacco, not counting time periods when you had quit? (numerical fill-in)
 - How old were you when you last used smokeless tobacco?
- 51. Did you ever smoke cigars regularly for a year or longer?**
- Prefer not to answer
 - No
 - Yes, I currently smoke cigars regularly
 - At what age did you first start smoking cigars regularly? (numerical fill-in)
 - How many years have you smoked cigars, not counting time periods when you had quit?
 - Yes, I formerly smoked cigars regularly
 - At what age did you first start smoking cigars regularly? (numerical fill-in)
 - How many years did you smoke cigars, not counting time periods when you had quit?
 - How old were you when you last smoked cigars?
- 52. Did you ever smoke pipes regularly for a year or longer?**
- Prefer not to answer
 - No
 - Yes, I currently smoke pipes regularly
 - At what age did you first start smoking pipes regularly? (numerical fill-in)
 - How many years have you smoked pipes, not counting time periods when you had quit?
 - Yes, I formerly smoked pipes regularly
 - At what age did you first start smoking pipes regularly? (numerical fill-in)
 - How many years did you smoke pipes, not counting time periods when you had quit?
 - How old were you when you last smoked pipes?
- 53. Did you ever vape or use e-cigarettes regularly for a year or longer?**
- Prefer not to answer
 - No
 - Yes, I currently vape or use e-cigarettes regularly
 - At what age did you first start vaping or using e-cigarettes? (numerical fill-in)
 - How many years have you vaped or used e-cigarettes, not counting time periods when you had quit?
 - Yes, I formerly vaped or used e-cigarettes regularly
 - At what age did you first start vaping or using e-cigarettes? (numerical fill-in)
 - How many years did you vape or use e-cigarettes, not counting time periods when you had quit? (numerical fill-in)
 - How old were you when you last vaped or used e-cigarettes?
- 54. In the past 30 days, how many days did you have at least one drink of any alcoholic beverage such as beer, wine, a malt beverage, or liquor? One drink is equivalent to a 12-ounce beer, a 5-ounce glass of wine, or a drink with one shot of liquor. [dropdown with numerical options ranging from 0-30] _____**

○ **[If 0, skip questions 55-56]**

55. During the past 30 days, on the days when you drank, how many drinks did you consume on average? [fill-in, numerical text] _____
56. Considering all types of alcoholic beverages, how many times in the past 30 days did you consume 4/5 or more drinks on an occasion? [4 will appear for women, 5 will appear for men or missing sex response] [dropdown with numerical options ranging from 0-30] _____
57. Has a health professional ever told you to consider reducing your alcohol use?
- Yes
 - No
 - Unsure
 - Prefer not to answer

You have reached the end of this survey, and we would like to offer you an opportunity to give us feedback:

58. Is there anything else you would like us to know? [narrative box]

Optional information you would like us to know about you.

Thank you for your participation in the National Firefighter Registry. Please click Submit to complete your enrollment. If you have questions, please feel free to email us at NFRRegistry@cdc.gov.

Submit

Appendix G – Assurance of Confidentiality*

*The Assurance of Confidentiality received final approval from CDC’s Privacy and Confidentiality Unit (PCU) on 7/25/2022.

The Secretary of Health and Human Services (HHS) delegated authority to the National Institute for Occupational Safety and Health (NIOSH) of the Centers for Disease Control and Prevention (CDC) to collect health and occupational information for the purpose of monitoring and evaluating the cancer incidence among firefighters in the United States and its territories as outlined in the Firefighter Cancer Registry Act of 2018. The National Firefighter Registry (NFR) data will be used by scientists within CDC/NIOSH to monitor cancer incidence among firefighters and evaluate relationships between occupational and other characteristics and cancer. The data can also be analyzed by CDC/NIOSH scientists for other public health purposes. Data will be provided in a de-identified format for sharing with the public including external researchers, as appropriate.

The Division of Field Studies and Engineering (DFSE), National Institute for Occupational Safety and Health (NIOSH) has received a 308(d) Assurance of Confidentiality for National Firefighter Registry (NFR) data in order to protect the sensitive nature of these records which include direct (social security number (SSN), date of birth (DOB), and first and last name) and indirect (sex, age, race/ethnicity, marital status, employer (name of fire department), employee ID, current and past job titles (e.g., firefighter, company officer, fire chief, etc.), and hire date) identifiers obtained through an enrollment questionnaire. The NFR team will also use firefighters’ direct identifiers to link with population-based (e.g., state) cancer registries, the National Death Index (NDI), and other information databases for the purposes of determining cancer and health status, cancer diagnosis information, vital status, and cause of death. CDC/NIOSH will also request roster information from fire departments and state agencies to provide NIOSH with a list of individuals to be contacted to participate in the NFR and for tracking participation. The NFR team could also collect incident and employment records from fire departments or agencies that maintain these records for firefighters who consent to participate in the NFR. Lastly, participating firefighters can also request that exposure tracking software programs release their exposure tracking data for inclusion in NFR analyses to better understand firefighters’ exposure profile.

Given that this data collection may include sensitive information that is identifiable or potentially identifiable for individuals, NIOSH has requested and received authorization under Section 308(d) of the Public Health Service Act, (42 U.S.C. 242 m (d)) to assure the confidentiality of NFR data by protecting: identifiable data obtained from individual firefighters participating in the NFR; firefighters’ identifiable information provided by other institutions (e.g., fire departments, population-based cancer registries, exposure tracking programs); and the identities of fire departments in order to maximize participation from fire departments that are helping with recruitment or providing information to the NFR for consenting firefighters.

Identifiable information collected will be kept confidential and, aside from CDC/NIOSH or other federal employees assigned to the project, government contractors, visiting scientists, cooperative agreement partners, guest researchers, and fellows and trainees, third parties will be restricted from accessing this data. These individuals who handle the identifiable information will be required to adhere to a security and confidentiality protocol, participate in annual security training, and sign a 308(d) Nondisclosure Agreement and 308(d) Confidentiality Pledge. Institutions that house cancer registries and other information databases will be given access to select identifiable data for data linkage purposes (i.e., so CDC/NIOSH can acquire cancer diagnosis, health, and vital status records). Those institutions will not be using NFR data for public health purposes, nor will they receive any data beyond those needed for making successful data linkages for sharing with CDC/NIOSH.. De-identified NFR data will only be accessible to external researchers through a Research Data Center (RDC). All requests for de-identified NFR data files from outside parties must be made through a proposal to the RDC as outlined in Section D. Confidentiality Security Statement.

The voluntarily provided information collected by CDC/NIOSH as part of this activity that would permit identification of individuals or institutions (firefighters and fire departments) is collected and maintained under Sections 304 and 306 of the Public Health Service (PHS) Act (42 U.S.C. Sections 242b, 242k) with an assurance that it will be held in strict confidence in accordance with Section 308(d) of the PHS Act (42 U.S.C. Section 242m(d)). Such data will be used only for the purposes stated in this Assurance, and it will not otherwise be disclosed or released without the consent of the firefighters who provided information to the NFR and parties who were given this Assurance.

No information collected through the activities outlined in this Assurance that could be used to identify any individual on whom a record is maintained, either directly or indirectly, will be made available to anyone as set out in this Assurance. In particular, such information will not be disclosed to: the public; family members; parties involved in civil, criminal, or administrative litigation, or for commercial purposes; to agencies of the federal, state, local tribal, or territorial government including Congress, unless as described herein. This protection lasts forever, even after death.