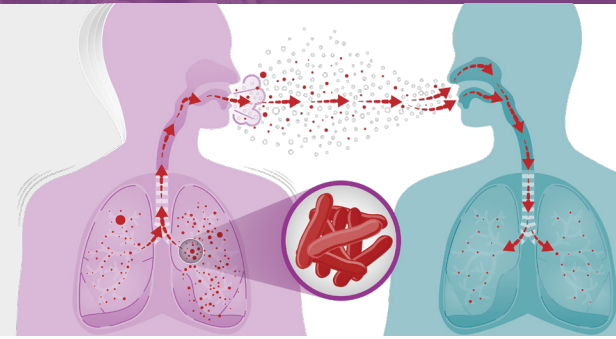


Ta eo Kwoj Aikuj in Jella Kin Tuberculosis

Tuberculosis (TB) ej juon nañinmej eo ej kōmman jen kij ko rej ajeeded jen armej ñan armej. TB ekkā an jelot ār ko, ak maroñ bar jelot mottan ko jot an enbwin, āinwot kōmalij, kidney, ak di.

Ejjab aolep ro rej bōk TB kij ko rej jinoe nañinmej. Ilo jemlok eo, ruo TBI-jekjek ko: latent TB nañinmej (ak TB eo ejjab emourur) im nañinmej in TB. Ñe ejimwe lale, TB nañinmej emaroñ in laplok.



Oktak wo ikotaan TB eo ejjab Emourur im TB Emourur

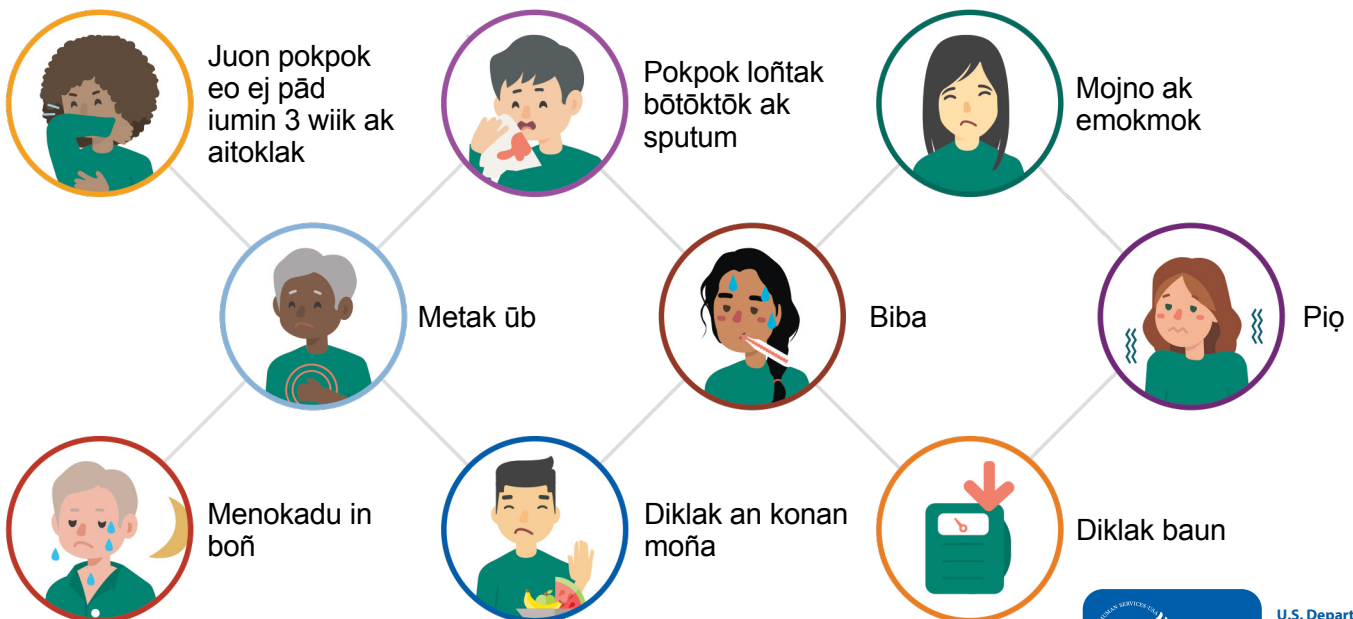
Juon Armej eo ej Nañinmej in TB eo ejjab Emourur

- Ewōr jidik TB kij ko ilo enbwinnier im rej mour wōt ak rejjab makūtkūt.
- Ejelok kakōlle im ejjab eñjake nañinmej.
- Ejjab maroñ ajeeded TB kij ñan ro jot.
- Ekkā an wōr TB teej in bōtōktōk eo positive ak TB teej in kil positive.
- Ewōr jikaan in ūb im juon sputum smear eo ejjab alikkar.
- Aikuj uno ñan TB eo ejjab emourur ñan kabōjrak an wōr TB emourur.

Juon Armej eo ej Nañinmej in TB eo Emourur

- Elap kij in TB ilo enbwinnier.
- Ewōr kakōlle im eñjake nañinmej.
- Maroñ in kajeeded TB kij ñan ro jot.
- Ekkā an wōr TB teej in bōtōktōk eo positive ak TB teej in kil positive.
- Ewōr jikaan in ūb im juon sputum smear eo ej positive.
- Aikuj uno ñan TB nañinmej eo emourur.

Ñe enbwinnim ejjab maroñ in kabōjrak an TB kij ko eddeklak, ej tal im wōr am TB nañinmej eo emourur. Kakōlle ko an nañinmej in TB emourur ej koba:



U.S. Department of Health and Human Services
Centers for Disease Control and Prevention

Teej ñan TB



Am bōke teej eo im wūno in kōmadmōd eo ñan TB eo ejab kabobo, emaron kejbarok kwe make, ro nukkam, im ro mōttam, im armij ro ilo jukjukinbed eo am. Ewōr ruo kain teej ko ñan nañinmij in TB: **teej in TB ilo bōtōktōk** im **teej in TB ilo kil**.



Juon Positive Teej ñan TB Nañinmej

Ewōr TB kij ilo enbwinim. Takto eo am enij kōmman jot bar teej ñan kalikkar ñe kwoj nañinmej in TB emourur ak jab. Teej kein emaroñ koba pija in ūb, im juon sputum eo kwoj pokpok e loñtak.



Juon Negative Teej ñan TB Nañinmej

Juon negative teej ej melelein kwojjab nañinmej in TB emourur ak jab.

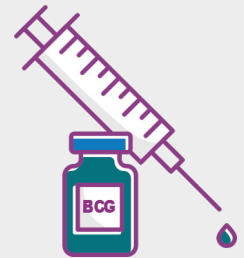
Takto eo am emaroñ kōmman elaplok teej ñe:

- Ewōr am kakōlle in TB emourur, āinwot pokpok, metak ūb, piba, diklak baun, ak emokmok.
- Ewōr am nañinmej in HIV ak nañinmej ko an jiroñ im likao.
- Am epāāke TB kij ko ej kab walok.

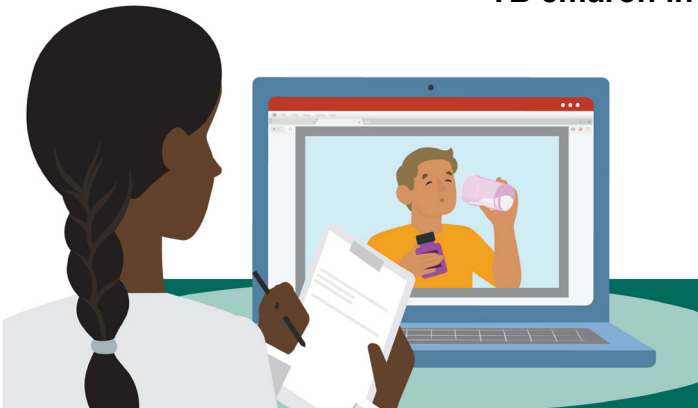
Ba ñan Takto eo ñe emōj am loe juon TB Wā

Emmonlok teej in TB ilo bōtōktōk ñan teej in TB ñan armij ro emōj aer bōke bacilli Calmette-Guérin (BCG) TB wā. Āinwot an oktak jen TB teej in kil, TB teej in bōtōktōk rejjab jelot jen BCG wā eo.

Eloñ armej ro rekar loñtak naborj in Amedka emōj aer bōk BCG TB wā. BCG wā eo ejjab kabōjrak an armej bōk TB. Juon positive nan TB teej in kil emaroñ in wōt jen BCG wā eo māke ak jen wōt nañinmej ko jen TB kij.



TB emaroñ in Jako ilo bōk Uno



Kij ko an TB remaron mour iloan enbwinim iomwin yiō ilo an ejellok kakōlkōl. Ñe ewōr am nañinmej in TB ejjab emourur, bōk uno ej waween eo eman tata ñan kōjbarok eok jen am bōk nañinmej in TB emourur.

Ñe emōj an takto kwalok ke kwoj nañinmej in TB emourur, emaroñ in jako ilo am bōk uno. Kwonij aikuj in bōk im kadedelak aolepen uno ko am ilo an karok jen takto eo am ak nōj. Ej ñan jibañ eok bwe en eman lak am pād im kabōjrak armej ro jot jen aer bōk nañinmej.

Waween eo eman tata ñan kememej in bōk aolep uno ko am ñan TB emourur ej ilo am bōk jibañ eok ej epāāke tata eok (DOT). Ilo DOT, kwonij topar eloñ rijerbal in ejmour aolep raan ak jejo alen juon wiik ilo-armej ak aunñain. Rijerbal in ejmour in enij lale bwe TB uno ko ren jermal āinwot aer aikuj.