



HILARY S. FRANZ
COMMISSIONER OF PUBLIC LANDS

GF-S \$6.3 million

Funds will begin planning for:

- A new marine education center
- Re-location of cabins
- Re-location of an amphitheater
- Critical infrastructure and roads

Camp Colman Restoration Project

Restoring fish passage at the YMCA-run Camp Colman represents opportunities to improve educational facilities for Washington’s youth.

The YMCA of Greater Seattle has operated Camp Colman since 2000, delivering outdoor access and environmental programs to over 2,500 children, teens, and families annually. DNR must remove a tidal gate at Whiteman Cove that was installed by the Department of Fisheries in 1961.

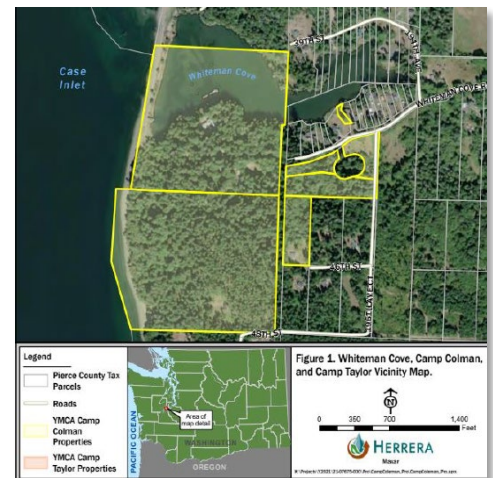
DNR’s work is required under *U.S. v WA (2013)* for tribal treaty rights, and, as a result, Whiteman Cove will become an estuary again. This important change will impact the Camp’s infrastructure, facilities, and programming at Camp Colman. However, there is an opportunity for the Camp to showcase this new estuary as a centerpiece of their environmental learning program



Camp Colman delivers co-benefits of habitat restoration and salmon recovery

This request will provide mitigation for disruptions to Camp Colman and help it to continue to serve youth and families from across Washington, with an emphasis on providing outdoor access and environmental education to BIPOC youth.

The work in this proposal continues priorities of the Legislature to improve both large-scale habitat restoration and ongoing environmental education. Previously, the Legislature provided \$1.9M to DNR/YMCA through June 2025 to begin planning, design, and permitting Camp Colman improvements in anticipation of the removal of the Whiteman Cove tide gate.



Funds requested in this proposal include:

- A marine education center on Whiteman Cove that may be at risk of inundation, particularly during high water and storm events;
- Re-location of Cabins at risk of erosion-related impacts from changes in hydrology;
- Re-location of the amphitheater at risk of erosion-related impacts;
- An aquatic center and upper field;
- A pier/dock on Case Inlet; and
- Infrastructure (roads, electrical, water treatment, trails, etc.) associated with the above structures.

CONTACT

Brian Considine
Legislative Director
Office: 360-902-1424
Cell: 360-764-0013
brian.considine@dnr.wa.gov
dnr.wa.gov