



Enabling Safe & Sustainable Recreation

CAPITAL INVESTMENTS WOULD INCREASE PUBLIC SAFETY, IMPROVE ACCESSIBILITY, AND DECREASE ENVIRONMENTAL IMPACTS

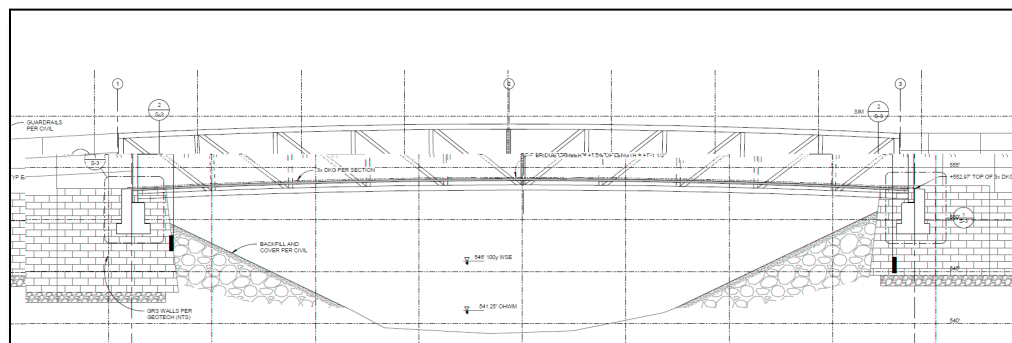
\$7,753,000 Capital Request (SBCA)

This request funds 43 subprojects across the state that invest in new or renovated recreation infrastructure on DNR-managed lands, which see **over 20 million visitor days annually**. Collectively, these investments would reduce environmental impacts, increase sustainability of trails and other infrastructure, improve accessibility and user experience, mitigate ORV impacts, and address public safety.

From 2019 to 2022, public use increased on DNR-managed lands by 38%.

Capital recreation infrastructure investments to achieve the following goals:

- Increase **sustainability**
- Improve **accessibility** and user experience
- Address **ORV impacts**
- Increase **safety**



Olsen Creek Bridge Design

INFRASTRUCTURE TO SUPPORT INCREASED PUBLIC USE

From 2019 to 2022, **public use increased by 38% on DNR-managed lands**. This demand for healthy, accessible outdoor recreation opportunities strains existing infrastructure such as trails, trailheads, campgrounds, and day use facilities that were designed and built decades ago, not only for a smaller number of users, but often different uses altogether. Capital investment in this infrastructure is critical to prevent environmental damage from sediment run-off, user conflicts due to incompatible uses, impacts to Tribal and cultural resources, and increased maintenance costs from overuse.



Helicopter bridge installation

CONTACT

Brian Considine
Legislative Director
Cell: 360-764-0013
brian.considine@dnr.wa.gov

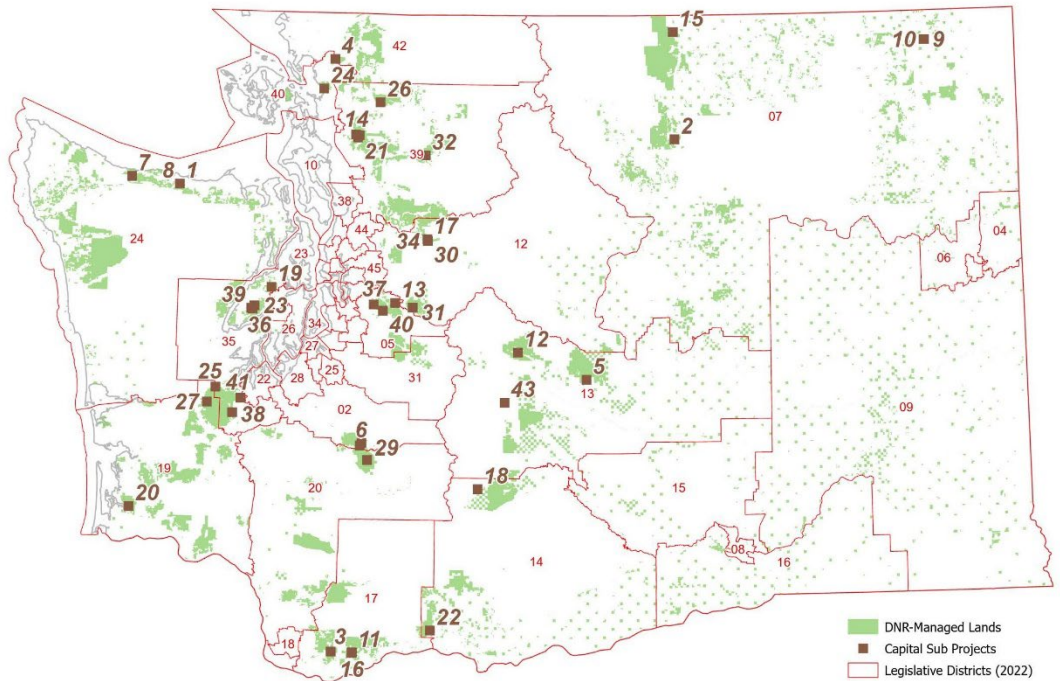
Olgy Diaz
Deputy Legislative Director
Cell: 360-918-3555
olgy.diaz@dnr.wa.gov



DNR-managed lands are popular for a wide range of recreation and public uses



PROJECT SITES



\$7,753,000 Capital Request (SBCA)

From 2019 to 2022, public use increased on DNR-managed lands by 38%.

Capital recreation infrastructure investments to achieve the following goals:

- Increase **sustainability**
- Improve **accessibility** and user experience
- Address **ORV impacts**
- Increase **safety**



Helicopter bridge installation

CONTACT

Brian Considine

Legislative Director
 Cell: 360-764-0013
 brian.considine@dnr.wa.gov

Olgy Diaz

Deputy Legislative Director
 Cell: 360-918-3555
 olgy.diaz@dnr.wa.gov

1. Dry Hill parking area
2. Leader Lake campground paving
3. Motorized planning and development
4. Olsen Creek bridge installation
5. Naneum access road
6. Elbe Hills Upper Elk Spur trail bridge
7. Motorized trail improvements
8. Dry Hill trail modifications
9. Toats Coulee campground toilet
10. Toats Junction toilet
11. Three Corner Rock trail rehabilitation
12. Teanaway trails
13. Raging River trail system final phase
14. Walker Valley parking A&E
15. Chopaka dock installation
16. Motorized recreation gate installation
17. Reiter trailhead connection trails
18. Blue Lake restoration
19. Green Mountain Horse Camp shelter
20. Snag/Western Lakes ADA boat launch and dock
21. Walker Valley bridges
22. Buck Creek trails modernization
23. Tahuya Kammenga Canyon campground redesign
24. Samish Overlook trailhead A&E
25. North Slope toilet and ADA Lot
26. Les Hilde Trailhead Control and Tenure
27. Porter Creek Campground toilet
28. Walker Valley sustainable fun area phase 1 - design
29. Anderson Lake toilet replacement
30. Reiter Foothills, Wallace Falls State Park trail connectors
31. Snoqualmie Corridor toilet renovations
32. North Mountain to Darrington connection
33. North Slope trail re-route and bridge
34. Reiter Road safety improvements
35. Elbe ORV trails
36. Tahuya connect 4x4 trail to Goat Ranch Road - mitigating rec impacts
37. Tiger Mountain - Poo Poo Point viewpoint & launch zone renovation
38. Margaret McKenney Campground ADA paving
39. Tahuya River Horse Camp
40. Tiger Mountain State Forest trails reconstruction
41. McLane nature trail road widening
42. Tahuya - armor motorized sites
43. McLane nature trail boardwalk replacement