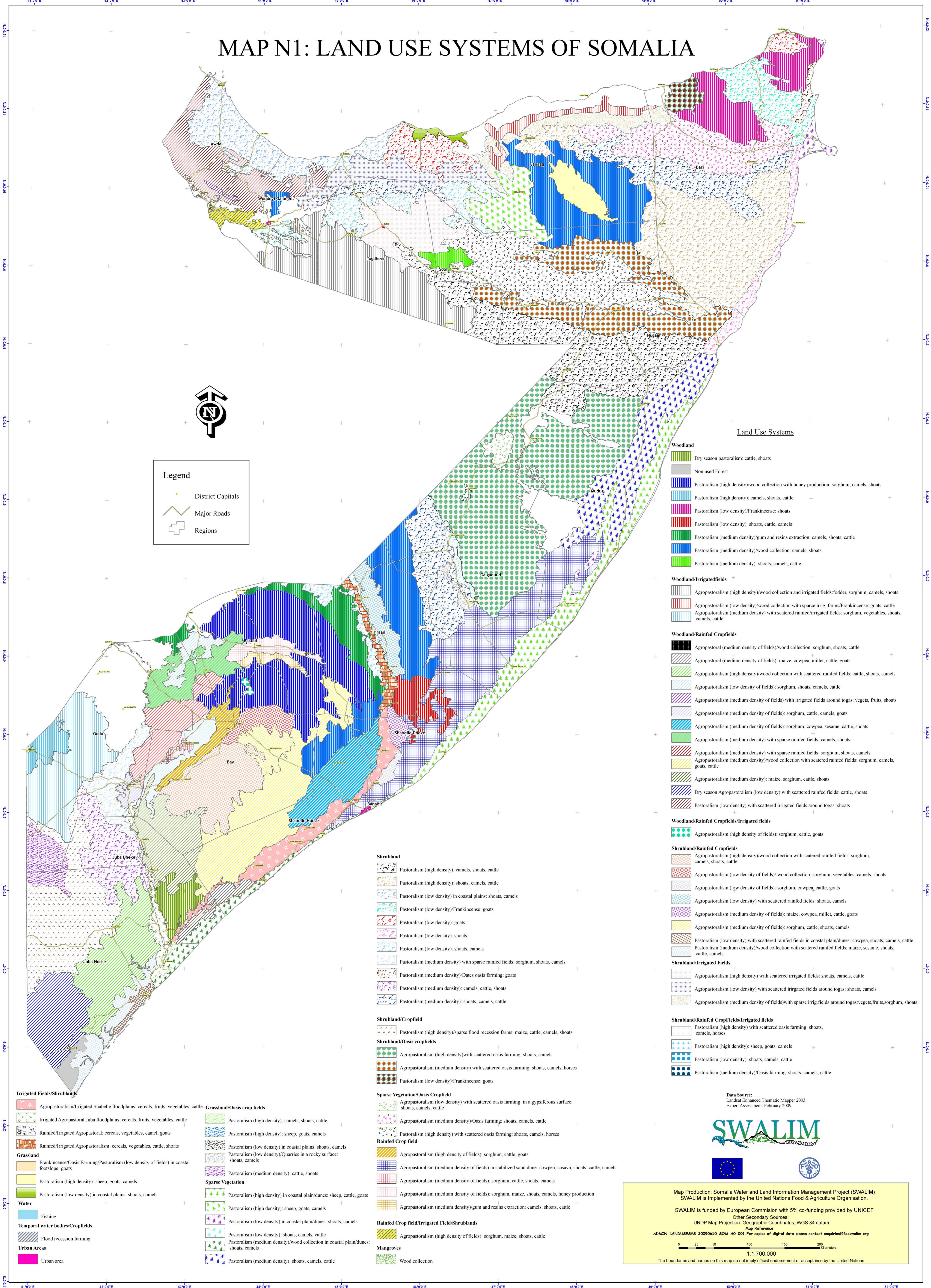


# MAP N1: LAND USE SYSTEMS OF SOMALIA



**Legend**

- District Capitals
- Major Roads
- Regions

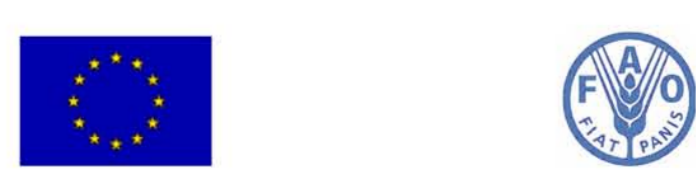
**Land Use Systems**

- Woodland**
  - Dry season pastoralism: cattle, shoats
  - Non used Forest
  - Pastoralism (high density)/wood collection with honey production: sorghum, camels, shoats
  - Pastoralism (high density): camels, shoats, cattle
  - Pastoralism (low density)/Frankincense: shoats
  - Pastoralism (low density): shoats, cattle, camels
  - Pastoralism (medium density)/gum and resins extraction: camels, shoats, cattle
  - Pastoralism (medium density)/wood collection: camels, shoats
  - Pastoralism (medium density): shoats, camels, cattle
- Woodland/Irrigated fields**
  - Agropastoralism (high density)/wood collection and irrigated fields: fodder, sorghum, camels, shoats
  - Agropastoralism (low density)/wood collection with sparse irrig. farms/Frankincense: goats, cattle
  - Agropastoralism (medium density) with scattered rainfed/irrigated fields: sorghum, vegetables, shoats, camels, cattle
- Woodland/Rainfed Cropfields**
  - Agropastoral (medium density of fields)/wood collection: sorghum, shoats, cattle
  - Agropastoral (medium density of fields): maize, cowpea, millet, cattle, goats
  - Agropastoralism (high density)/wood collection with scattered rainfed fields: cattle, shoats, camels
  - Agropastoralism (low density of fields): sorghum, shoats, camels, cattle
  - Agropastoralism (medium density of fields) with irrigated fields around togas: vegeats, fruits, shoats
  - Agropastoralism (medium density of fields): sorghum, cattle, camels, goats
  - Agropastoralism (medium density of fields): sorghum, cowpea, sesame, cattle, shoats
  - Agropastoralism (medium density) with sparse rainfed fields: camels, shoats
  - Agropastoralism (medium density) with sparse rainfed fields: sorghum, shoats, camels
  - Agropastoralism (medium density)/wood collection with scattered rainfed fields: sorghum, camels, goats, cattle
  - Agropastoralism (medium density): maize, sorghum, cattle, shoats
  - Dry season Agropastoralism (low density) with scattered rainfed fields: cattle, shoats
  - Pastoralism (low density) with scattered irrigated fields around togas: shoats
- Woodland/Rainfed Cropfields/Irrigated fields**
  - Agropastoralism (high density of fields): sorghum, cattle, goats
- Shrubland/Rainfed Cropfields**
  - Agropastoralism (high density)/wood collection with scattered rainfed fields: sorghum, camels, shoats, cattle
  - Agropastoralism (low density of fields)/ wood collection: sorghum, vegetables, camels, shoats
  - Agropastoralism (low density of fields): sorghum, cowpea, cattle, goats
  - Agropastoralism (low density) with scattered rainfed fields: shoats, camels
  - Agropastoralism (medium density of fields): maize, cowpea, millet, cattle, goats
  - Agropastoralism (medium density of fields): sorghum, cattle, shoats, camels
  - Pastoralism (low density) with scattered rainfed fields in coastal plain/dunes: cowpea, shoats, camels, cattle
  - Pastoralism (medium density)/wood collection with scattered rainfed fields: maize, sesame, camels, cattle, camels
- Shrubland/Irrigated Fields**
  - Agropastoralism (high density) with scattered irrigated fields: shoats, camels, cattle
  - Agropastoralism (low density) with scattered irrigated fields around togas: shoats, camels
  - Agropastoralism (medium density of fields) with sparse irrig fields around togas:vegeats,fruits,sorghum, shoats
- Shrubland/Rainfed Cropfields/Irrigated fields**
  - Pastoralism (high density) with scattered oasis farming: shoats, camels, horses
  - Pastoralism (high density): sheep, goats, camels
  - Pastoralism (low density): shoats, camels, cattle
  - Pastoralism (medium density)/Oasis farming: shoats, camels, cattle

- Shrubland**
  - Pastoralism (high density): camels, shoats, cattle
  - Pastoralism (high density): shoats, camels, cattle
  - Pastoralism (low density) in coastal plains: shoats, camels
  - Pastoralism (low density)/Frankincense: goats
  - Pastoralism (low density): goats
  - Pastoralism (low density): shoats
  - Pastoralism (low density): shoats, camels
  - Pastoralism (medium density) with sparse rainfed fields: sorghum, shoats, camels
  - Pastoralism (medium density)/Dates oasis farming: goats
  - Pastoralism (medium density): camels, cattle, shoats
  - Pastoralism (medium density): shoats, camels, cattle
- Shrubland/Cropfield**
  - Pastoralism (high density)/sparse flood recession farms: maize, cattle, camels, shoats
- Shrubland/Oasis cropfields**
  - Agropastoralism (high density) with scattered oasis farming: shoats, camels
  - Agropastoralism (medium density) with scattered oasis farming: shoats, camels, horses
  - Pastoralism (low density)/Frankincense: goats
- Sparse Vegetation/Oasis Cropfield**
  - Agropastoralism (low density) with scattered oasis farming in a gypsiferous surface: shoats, camels, cattle
  - Agropastoralism (medium density)/Oasis farming: shoats, camels, cattle
  - Pastoralism (high density) with scattered oasis farming: shoats, camels, horses
- Rainfed Crop field**
  - Agropastoralism (high density of fields): sorghum, cattle, goats
  - Agropastoralism (medium density of fields) in stabilized sand dune: cowpea, casava, shoats, cattle, camels
  - Agropastoralism (medium density of fields): sorghum, cattle, shoats, camels
  - Agropastoralism (medium density of fields): sorghum, maize, shoats, camels, honey production
  - Agropastoralism (medium density)/gum and resins extraction: camels, shoats, cattle
- Rainfed Crop field/Irrigated Field/Shrublands**
  - Agropastoralism (high density of fields): sorghum, maize, shoats, cattle
- Mangroves**
  - Wood collection

- Irrigated Fields/Shrublands**
  - Agropastoralism/Irrigated Shabelle floodplains: cereals, fruits, vegetables, cattle
  - Irrigated Agropastoral Juba floodplains: cereals, fruits, vegetables, cattle
  - Rainfed/Irrigated Agropastoral: cereals, vegetables, camel, goats
  - Rainfed/Irrigated Agropastoralism: cereals, vegetables, cattle, shoats
- Grassland**
  - Frankincense/Oasis Farming/Pastoralism (low density of fields) in coastal footslope: goats
  - Pastoralism (high density): sheep, goats, camels
  - Pastoralism (low density) in coastal plains: shoats, camels
- Water**
  - Fishing
- Temporal water bodies/Cropfields**
  - Flood recession farming
- Urban Areas**
  - Urban area
- Grassland/Oasis crop fields**
  - Pastoralism (high density): camels, shoats, cattle
  - Pastoralism (high density): sheep, goats, camels
  - Pastoralism (low density) in coastal plains: shoats, camels
  - Pastoralism (low density)/Quarries in a rocky surface: shoats, camels
  - Pastoralism (medium density): cattle, shoats
- Sparse Vegetation**
  - Pastoralism (high density) in coastal plain/dunes: sheep, cattle, goats
  - Pastoralism (high density): sheep, goats, camels
  - Pastoralism (low density) in coastal plain/dunes: shoats, camels
  - Pastoralism (low density): shoats, camels, cattle
  - Pastoralism (medium density)/wood collection in coastal plain/dunes: shoats, camels
  - Pastoralism (medium density): shoats, camels, cattle

Data Source:  
Landat Enhanced Thematic Mapper 2003  
Expert Assessment: February 2009



Map Production: Somalia Water and Land Information Management Project (SWALIM)  
SWALIM is implemented by the United Nations Food & Agriculture Organisation.

SWALIM is funded by European Commission with 5% co-funding provided by UNICEF

Other Secondary Sources:  
UNDP Map Projection: Geographic Coordinates, WGS 84 datum  
Map Reference:  
ADMIN-LANDUSESYS-20090610-SOM-AD-001 For copies of digital data please contact enquiries@faswalim.org

0 25 50 100 150 200 Kilometers

1:1,700,000

The boundaries and names on this map do not imply official endorsement or acceptance by the United Nations