

# Texas Blue Crab Update

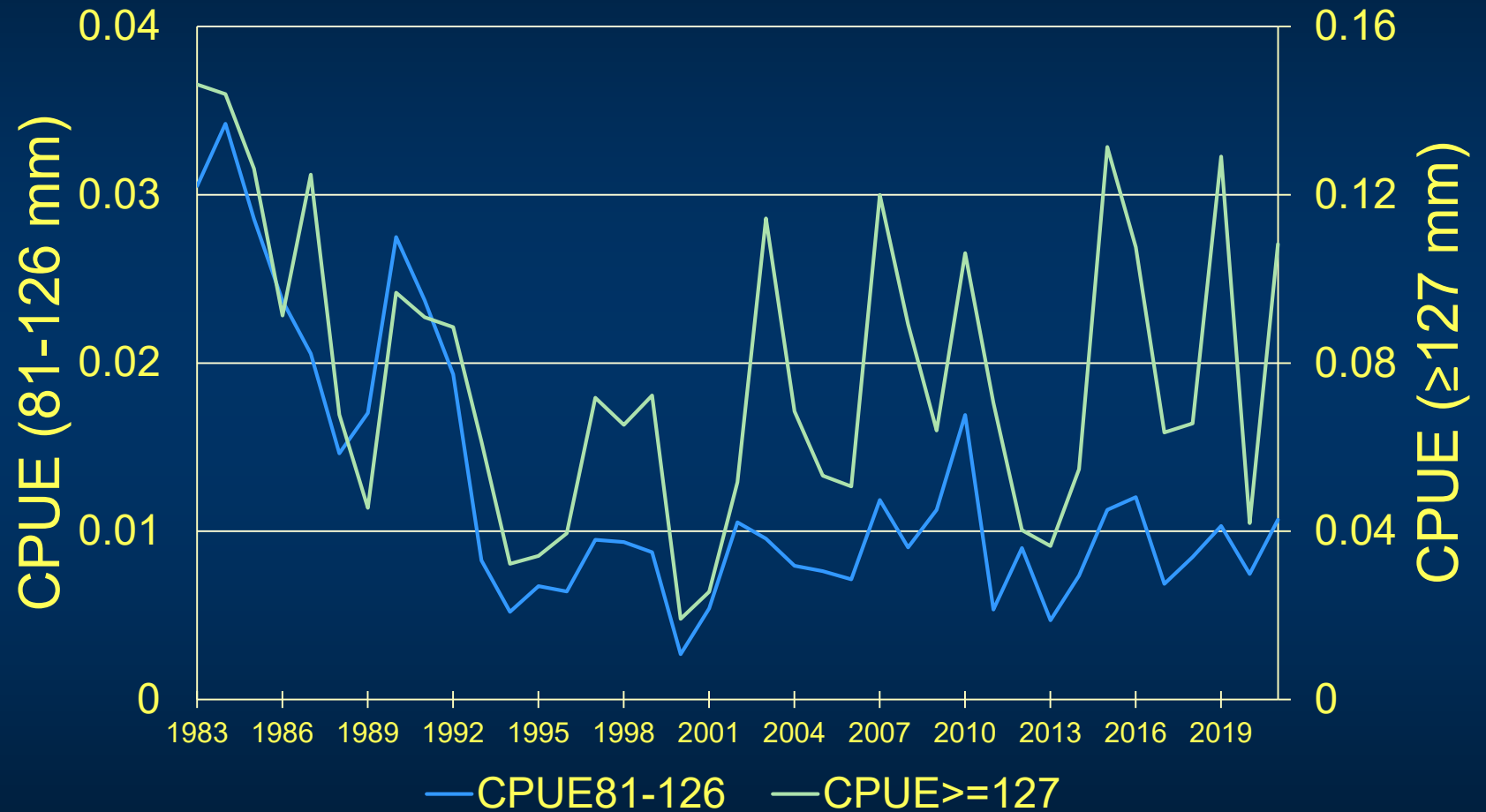
October 2022

Zachary Olsen, Stephen Hale, Tom Wagner  
Texas Parks and Wildlife Department

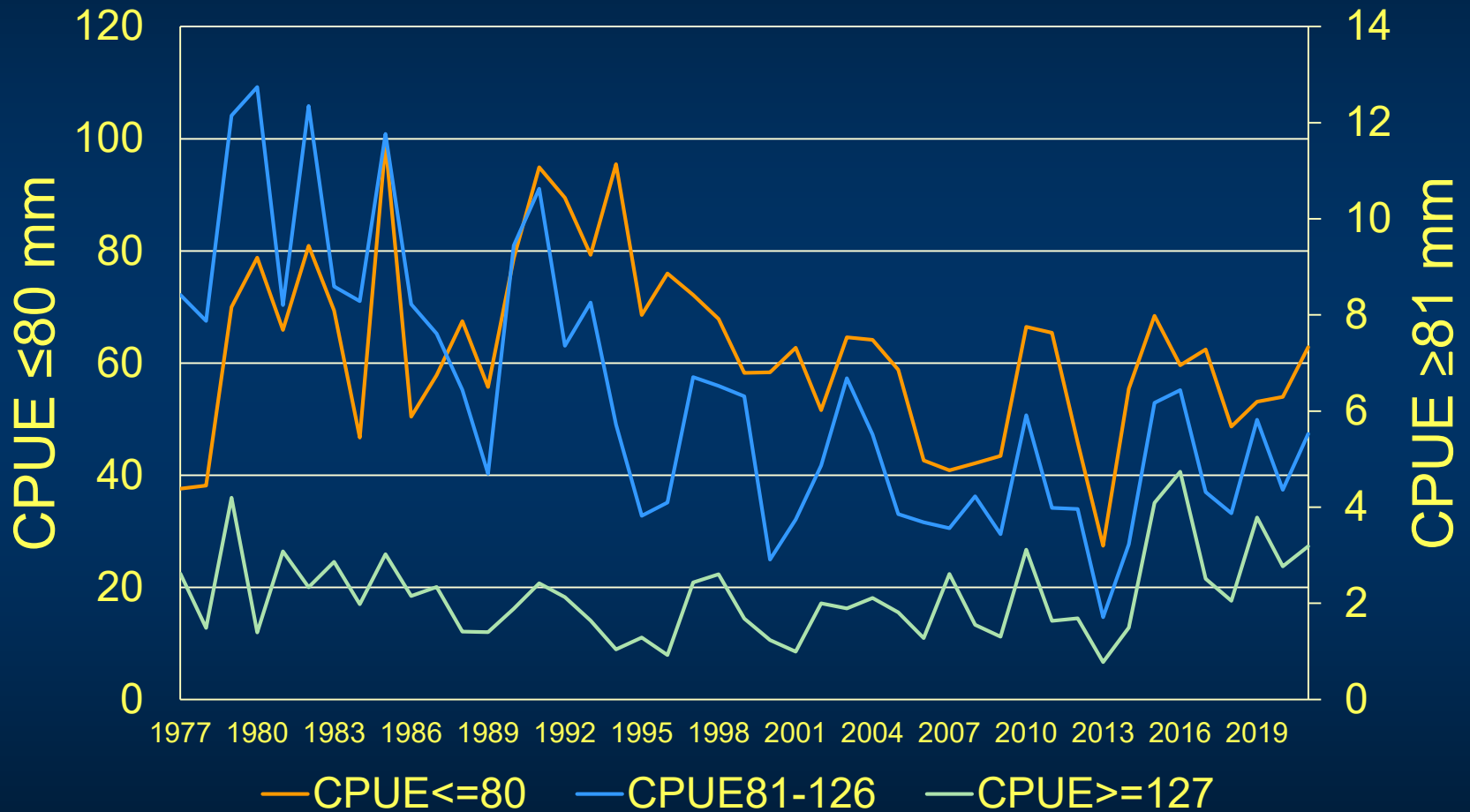


# **Abundance Trends (Fishery Independent)**

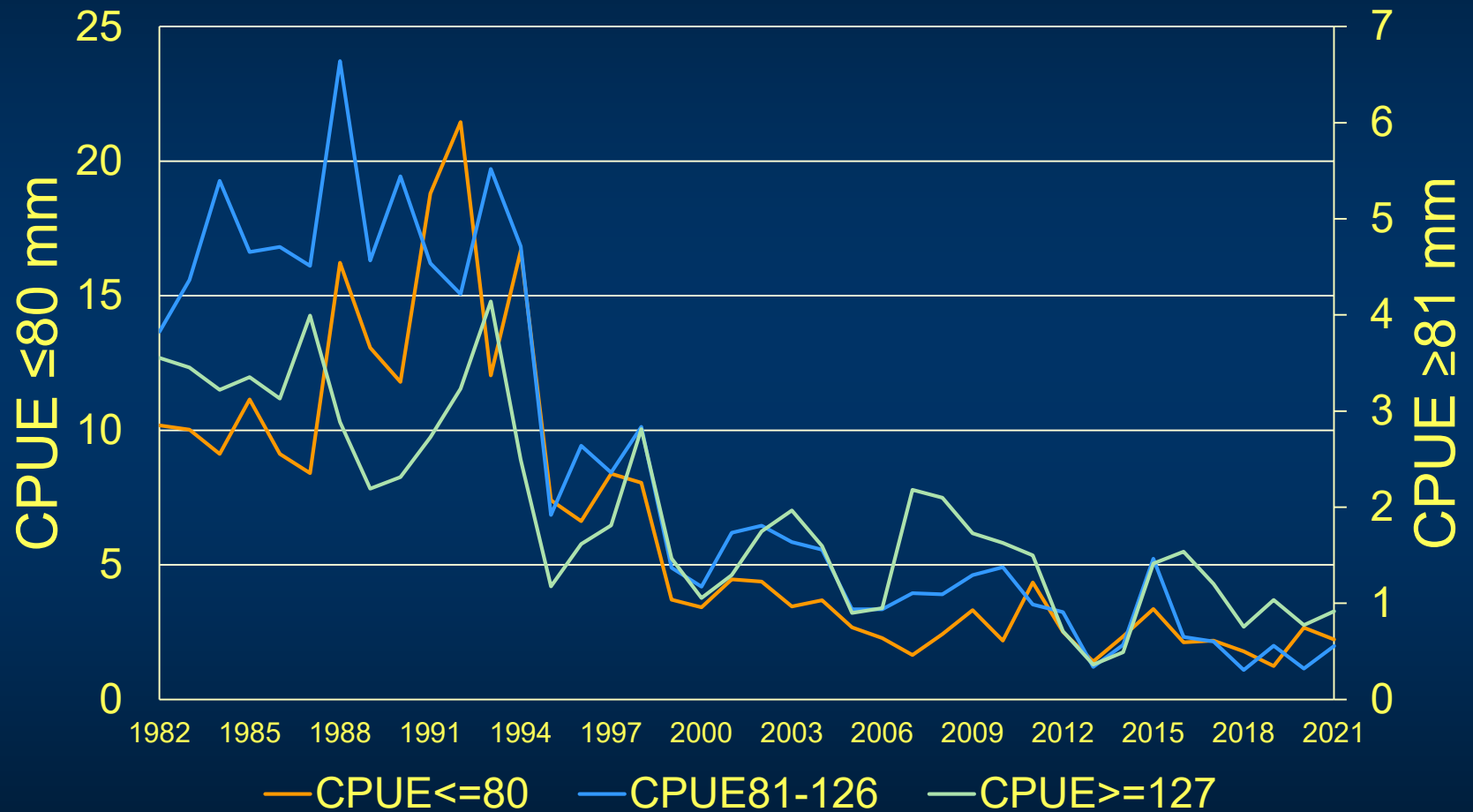
# Fishery Independent Gill Net Surveys



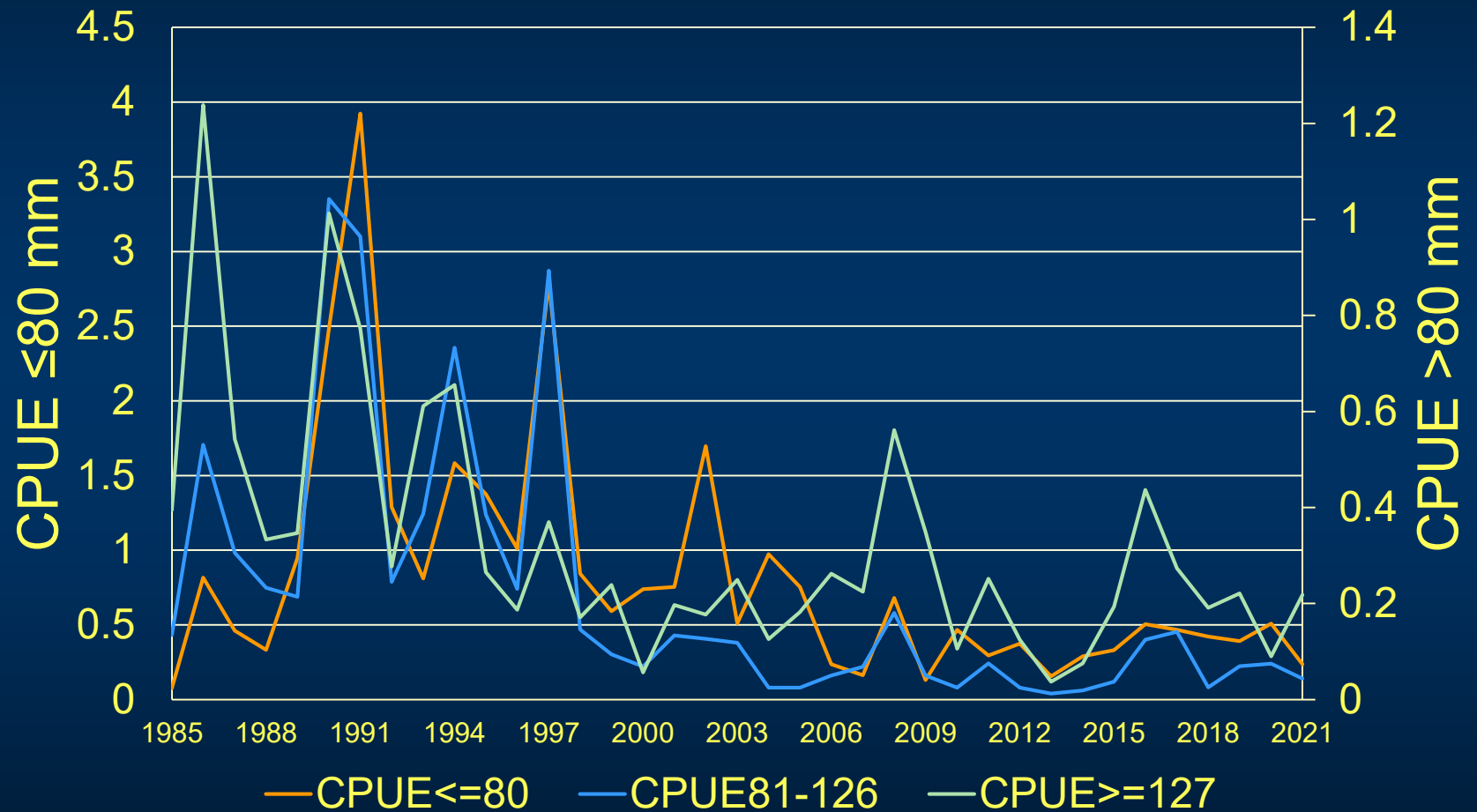
# Fishery Independent Bag Seine Surveys



# Fishery Independent Bay Trawl Surveys



# Fishery Independent Gulf Trawl Surveys



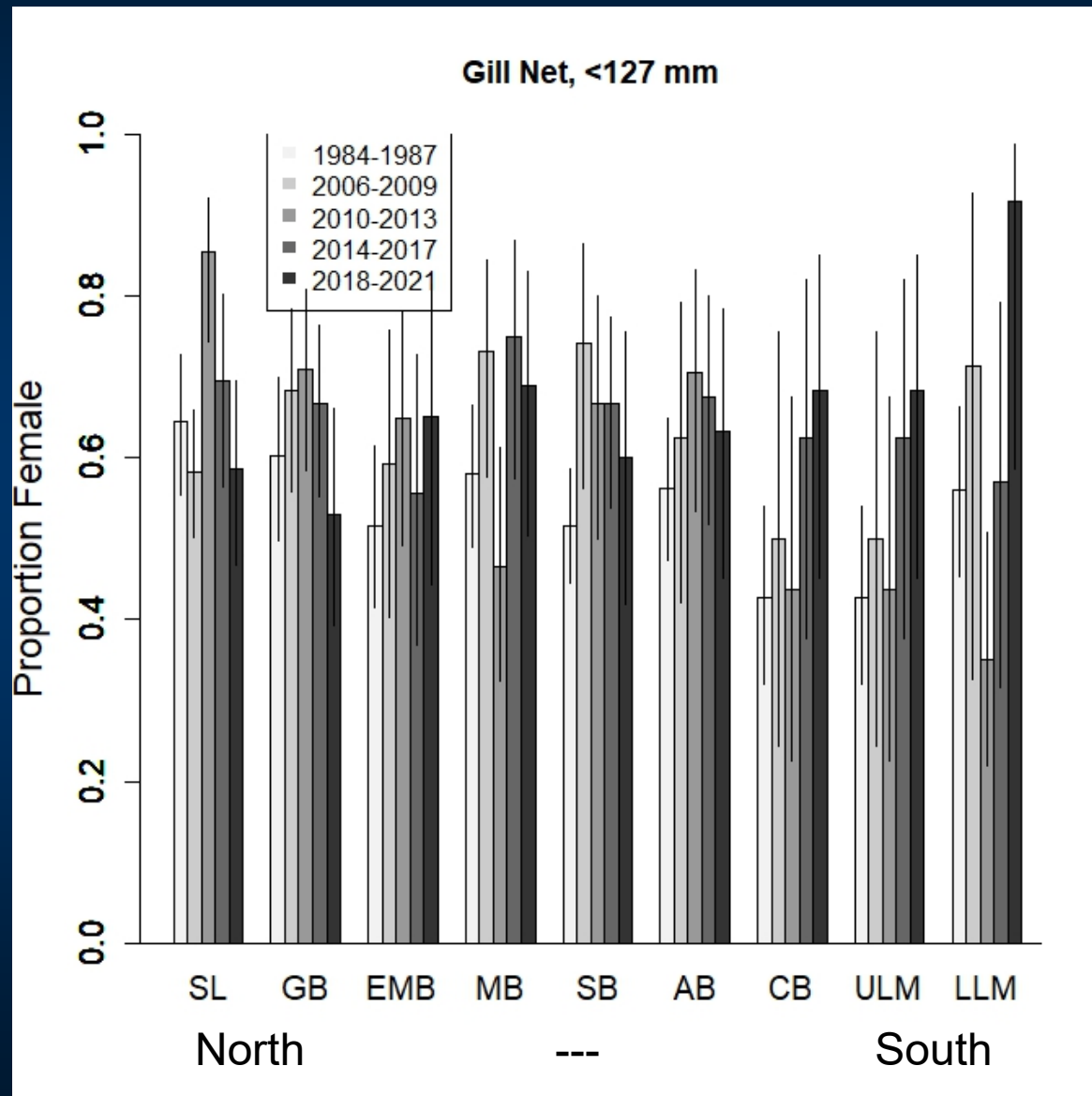
# Fishery Independent Summary

- Trends differ by sampling gear
  - Sustained low abundance in trawls
  - Some improvement in seines and gill nets (mainly in adult size class)
- Open water vs. shore-based trends (habitat related?)

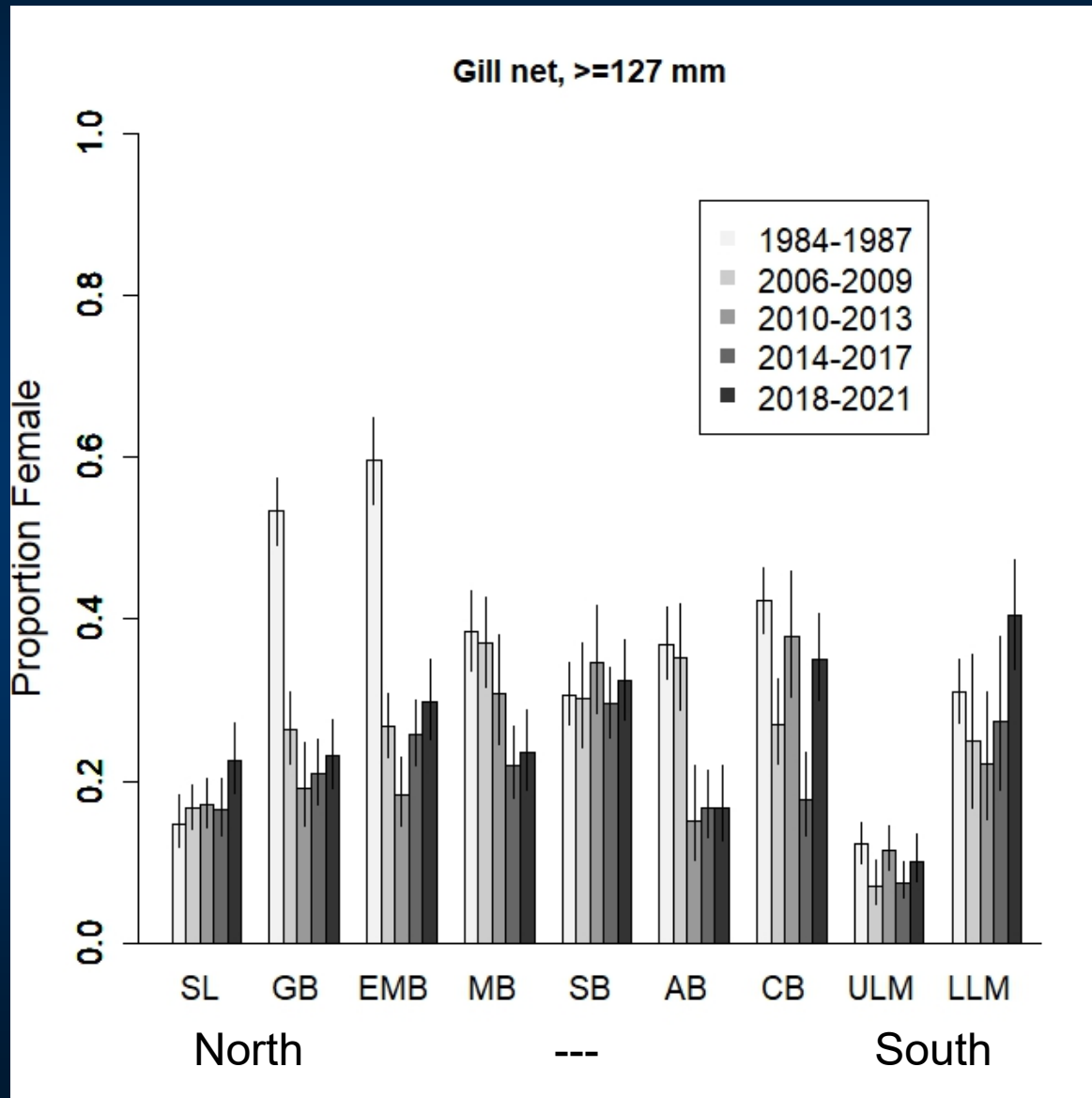
# **Proportion Female Crabs (Fishery Independent)**



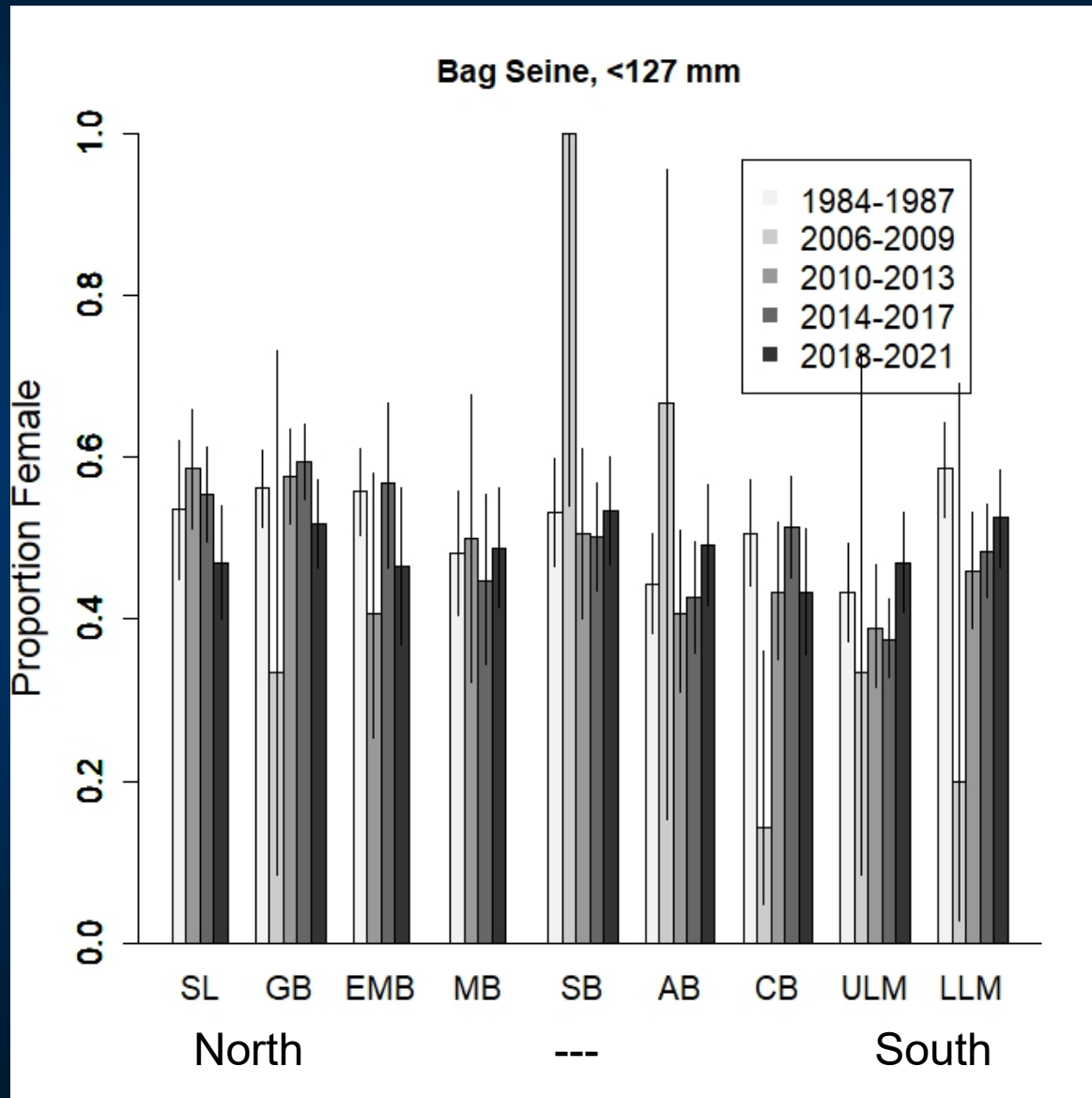
# Proportion Female, Gill Net, Sub-legal (< 127 mm)



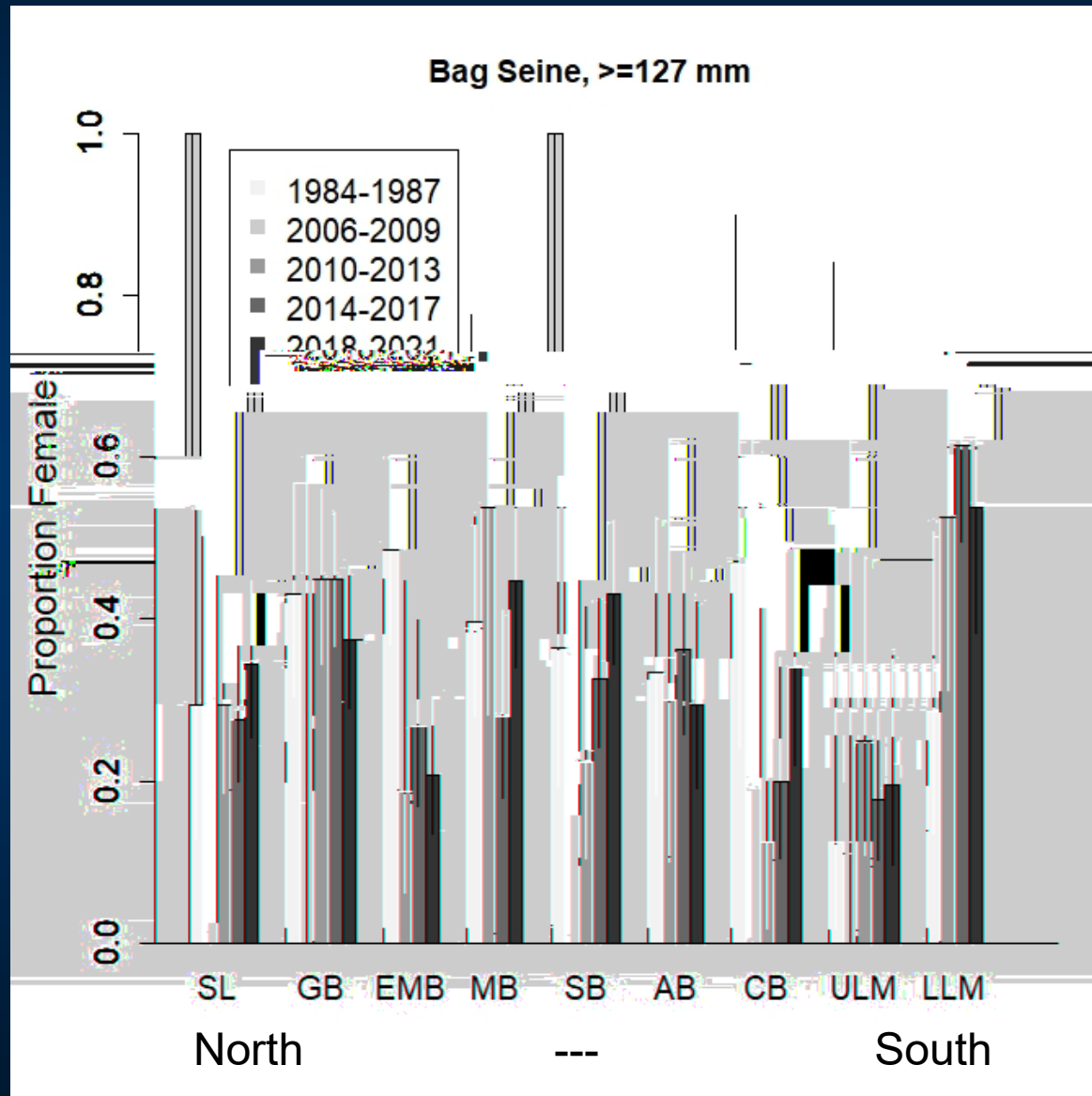
# Proportion Female, Gill Net, Legal ( $\geq 127$ mm)



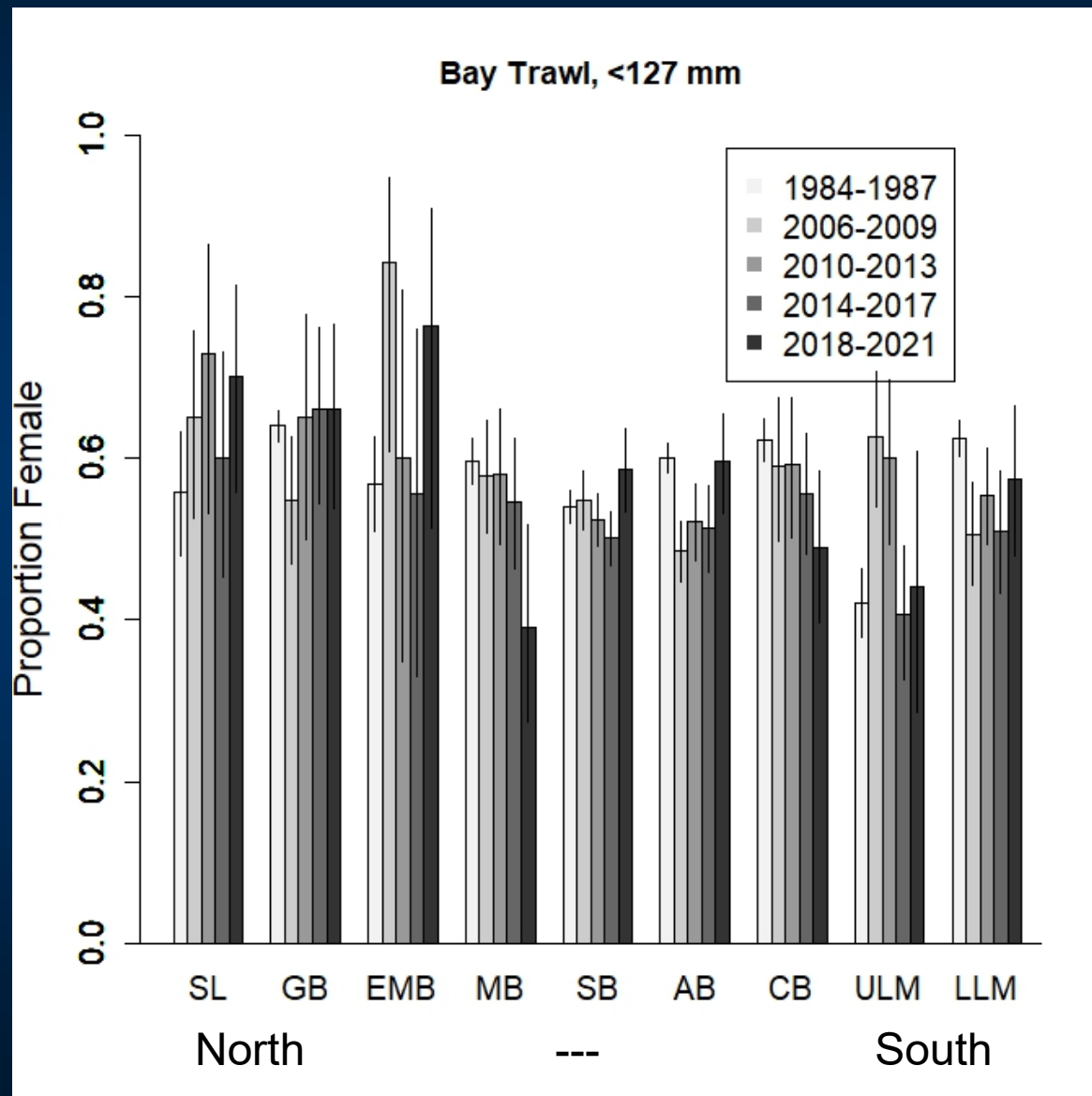
# Proportion Female, Seine, Sub-legal (< 127 mm)



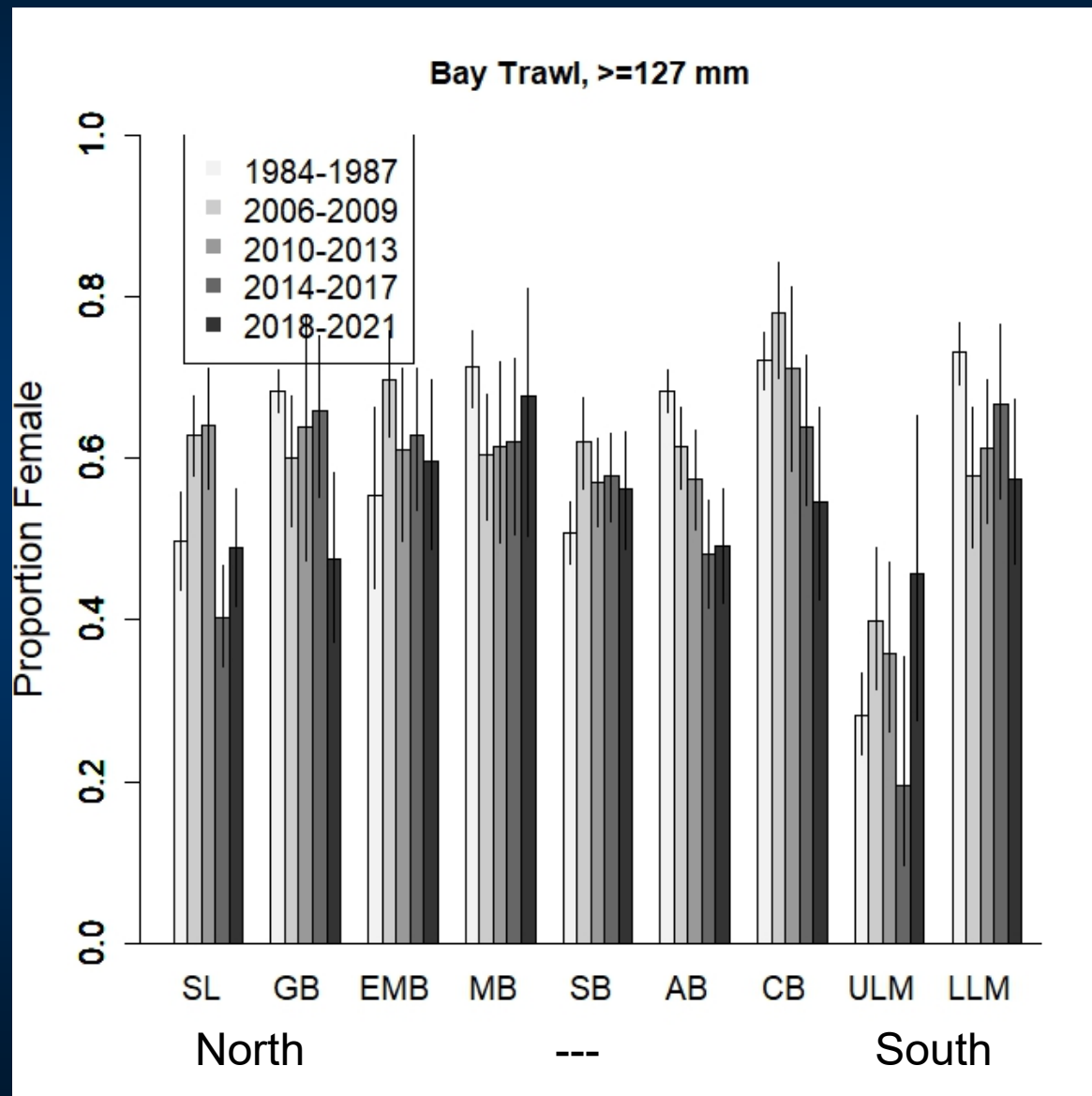
# Proportion Female, Seine, Legal ( $\geq 127$ mm)



# Proportion Female, Bay Trawl, Sub-legal (< 127 mm)



# Proportion Female, Bay Trawl, Legal ( $\geq 127$ mm)



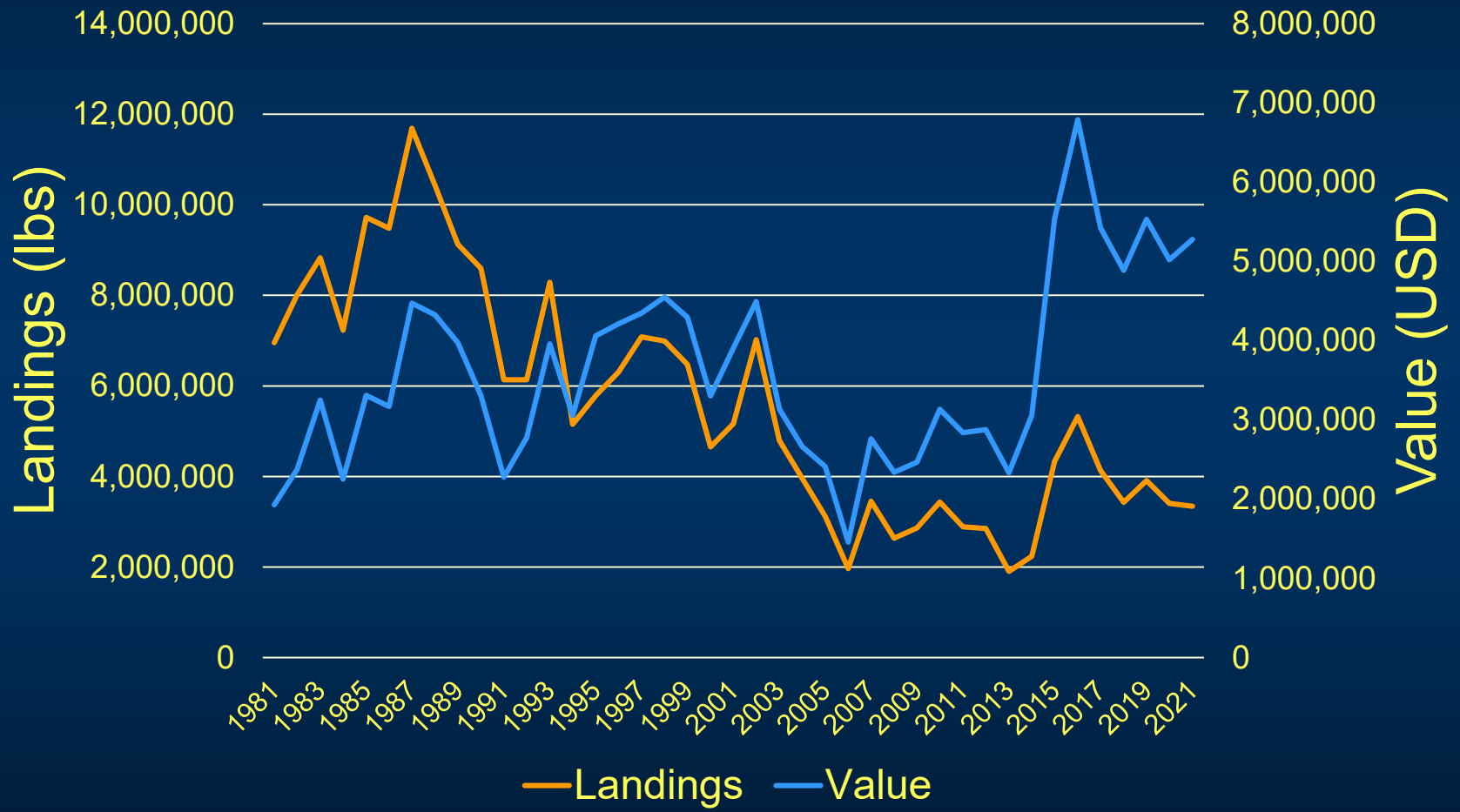
## Proportion by Sex Summary

- Difference in sex ratio by gear and size class (likely habitat and gear selectivity)
- No obvious large-scale trends in proportion female across the timeseries

# Harvest Trends



# Commercial Landings and Value



# Commercial Landings and Value Per Trip

