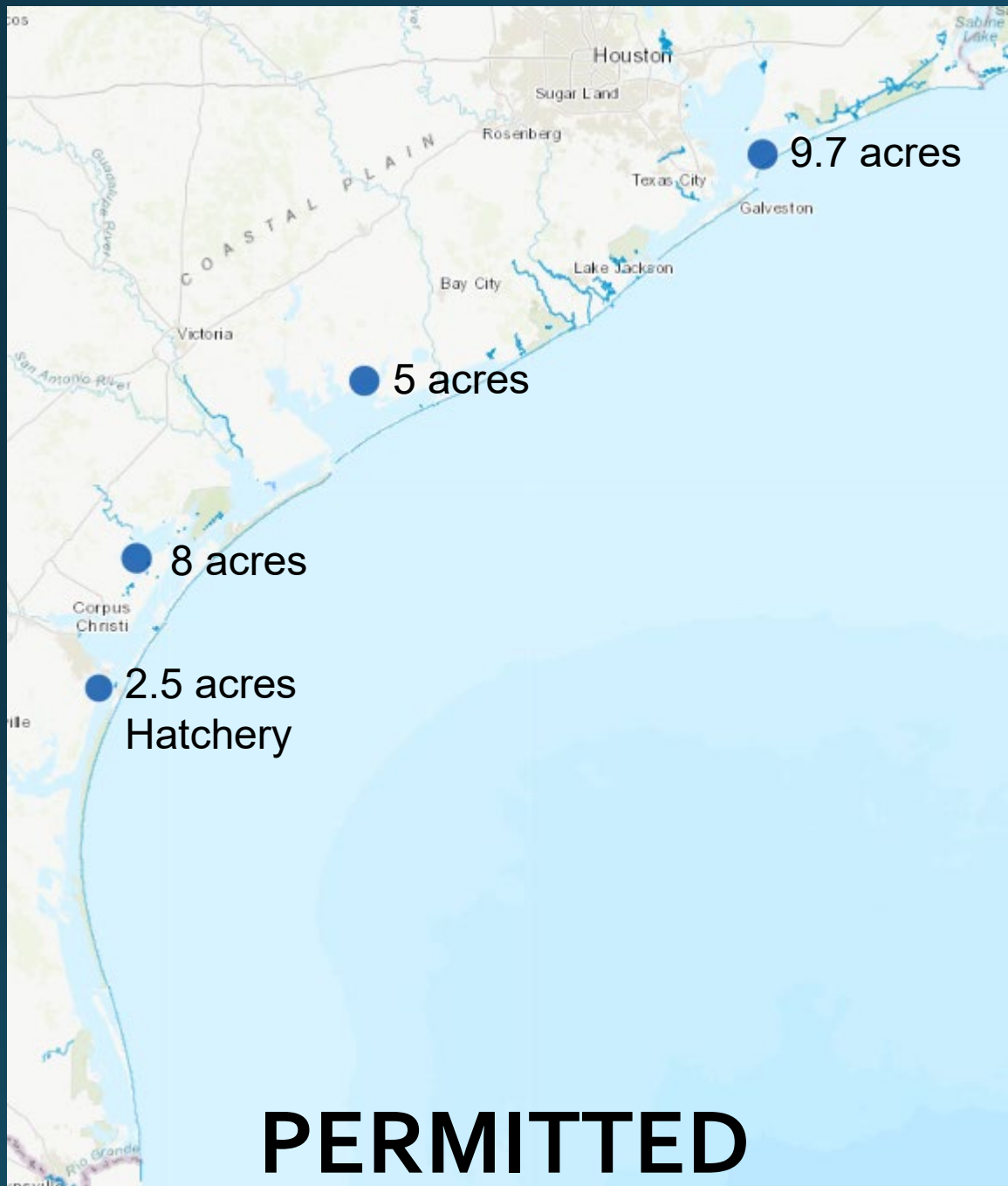




# TEXAS STATE OYSTER UPDATES

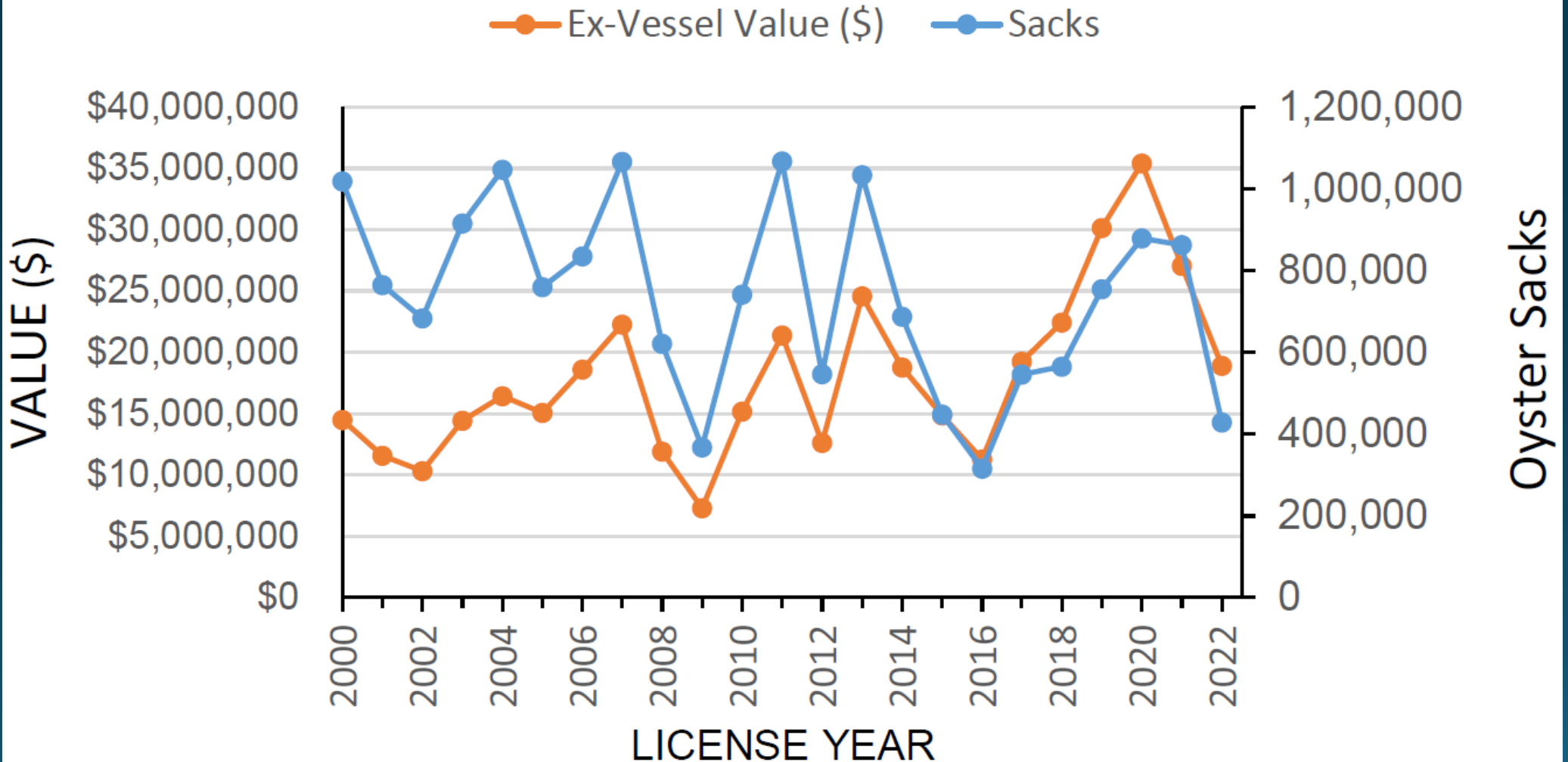
# Off-Bottom Cultivated Oyster Mariculture Updates

- Rules adopted and applications accepted in 2020
- Continuing to refine the program processes, procedures, guidance documents, and applications
  - Online application portal in development
  - Developed hatchery permitting and oversight process
  - Updated Biosecurity and Genetic Integrity Protocols
  - Still developing integrated reporting forms
  - Coordinating with GLO to host online Spatial Planning Tool



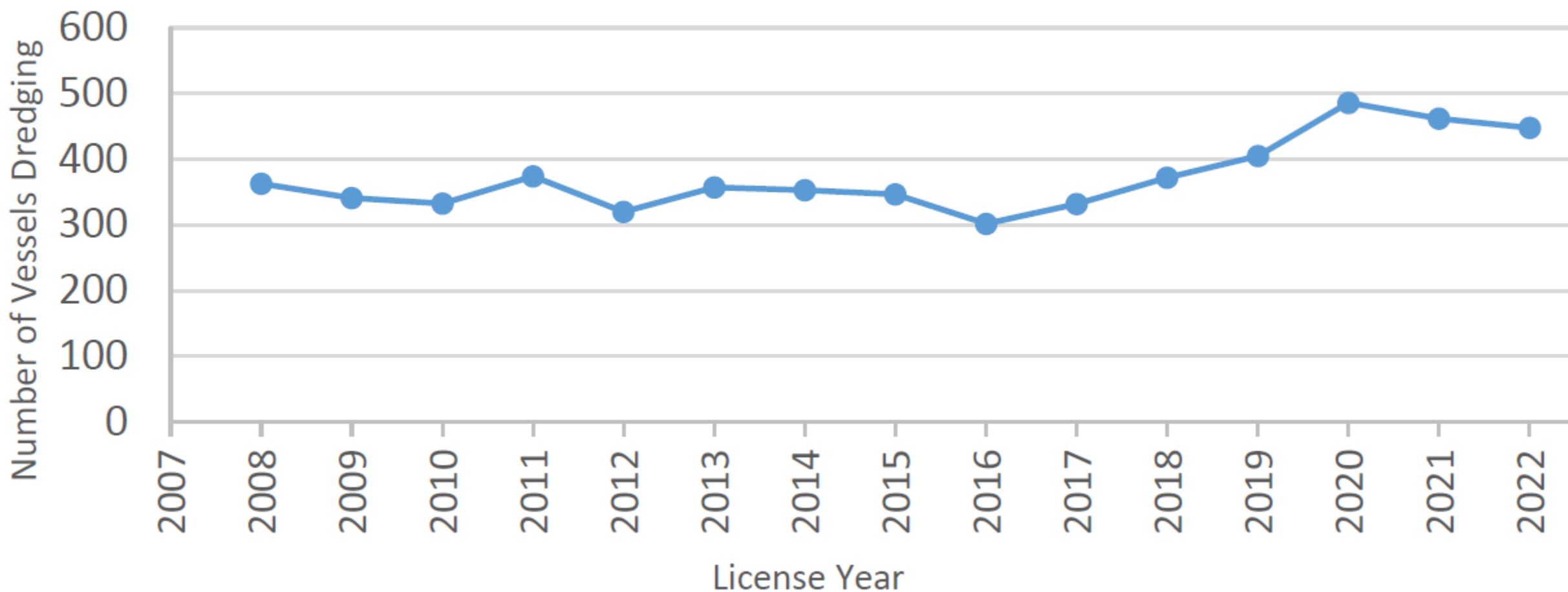
# On-Bottom Commercial Oyster Landings Public and Private Reefs

## Texas Commercial Oyster Landings

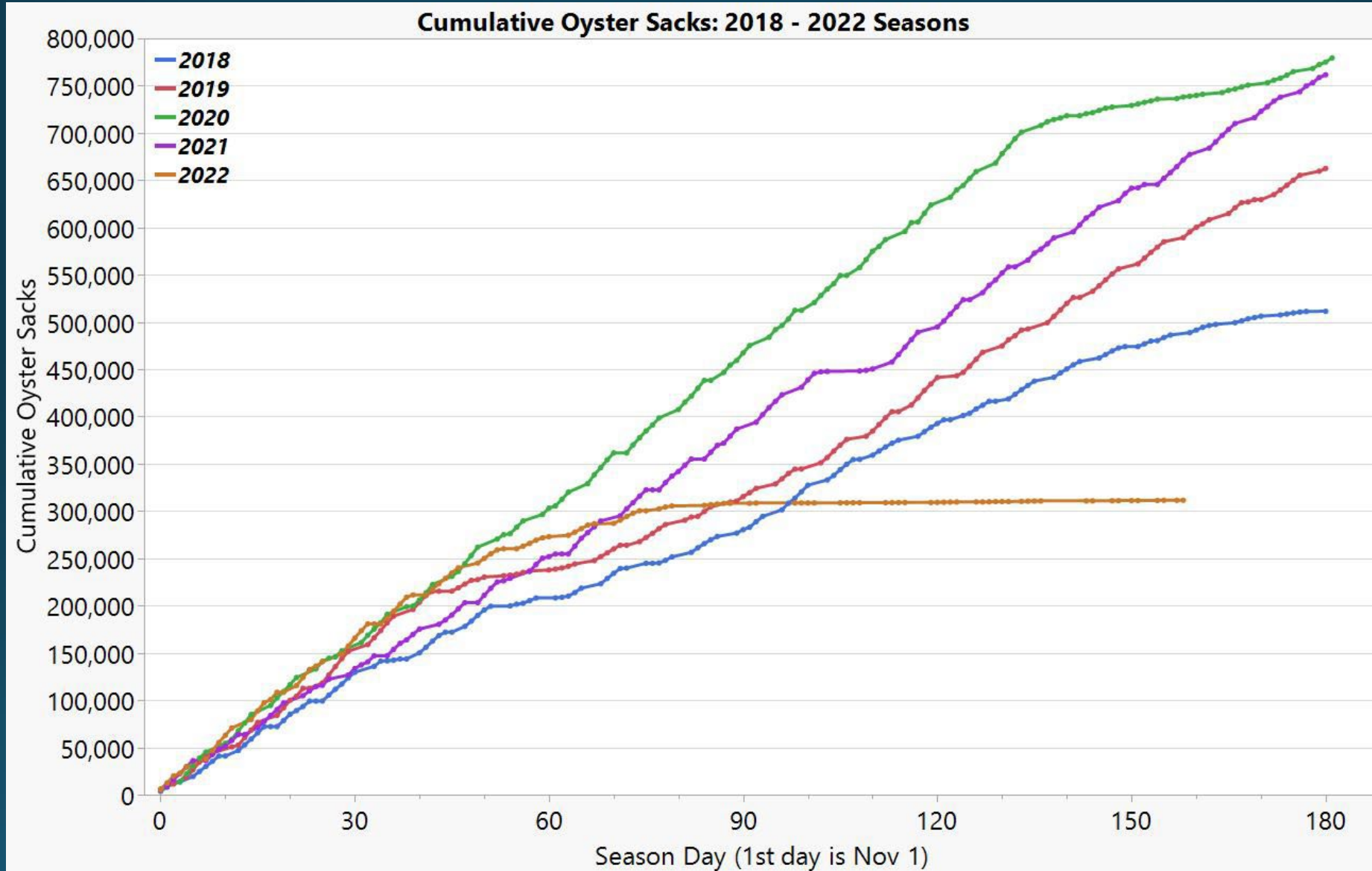


# On-Bottom Commercial Oyster Landings Public and Private Reefs

## Active Commercial Oyster Vessels



# On-Bottom Commercial Oyster Landings Public and Private Reefs

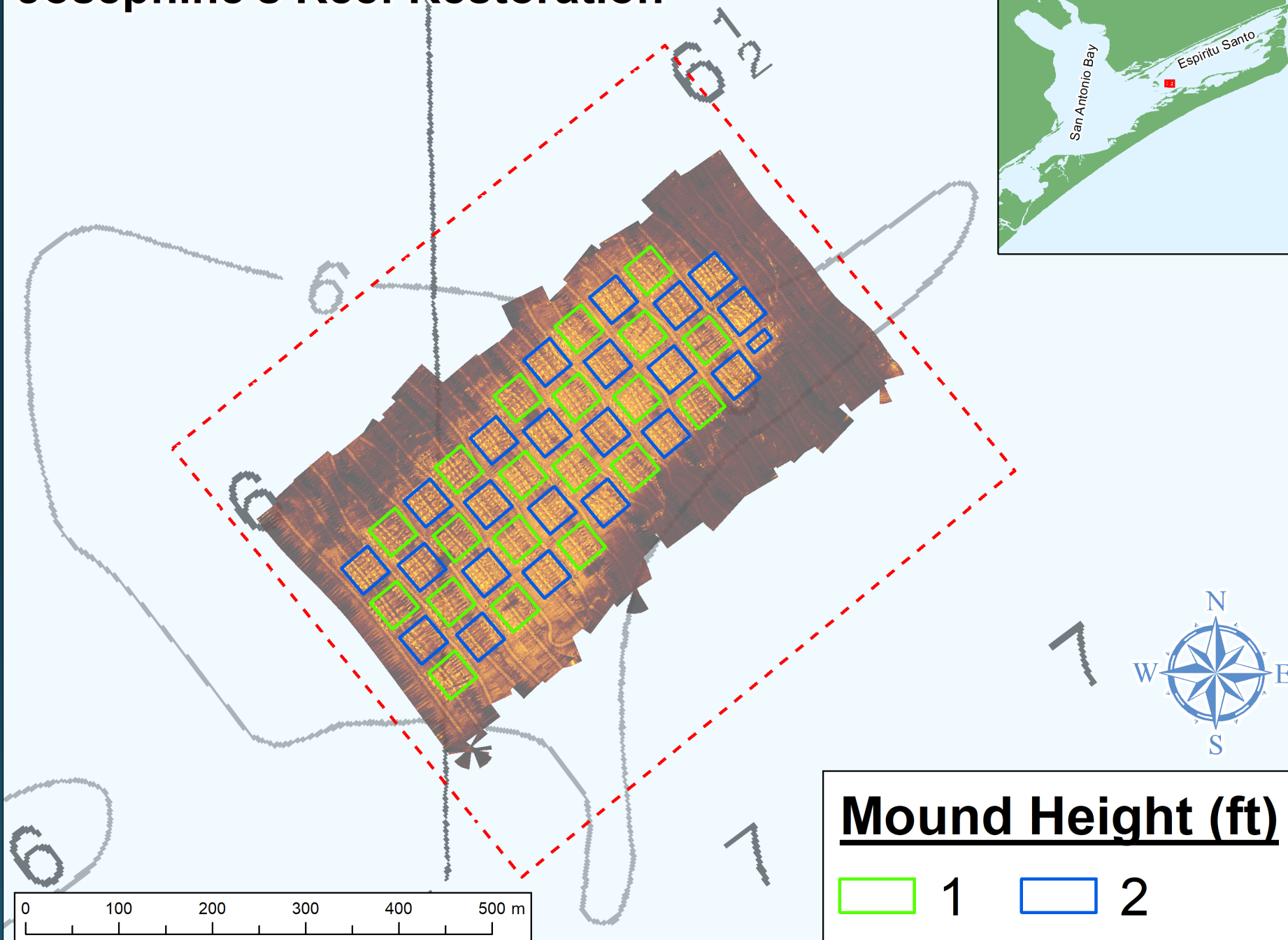


# Oyster Shell Recovery

LY	Sacks Harvested	Cultch Due (cu yds)	Fee in lieu of cultch	Final Disposition (actual)		% accounted for
				Cultch (cu yds)	Fee (\$)	
2018	564,787	9,805.30	\$745,518	6,590.5	\$248,448	100.5
2019	754,565	13,100.00	\$996,025	9,705.3	\$228,047	97.0
2020	878,503	15,251.70	\$1,159,624	3,219.9	\$306,294	47.5
2021	861,939	14,964.12	\$1,137,759	16,150.2	\$242,715	129.3
2022	424,002	7,361.10	\$559,683	7,428.4	\$135,151	125.1
<b>Total</b>	<b>3,483,796</b>	<b>60,482.22</b>	<b>\$4,598,609</b>	<b>43,094.3</b>	<b>\$1,160,655</b>	<b>96.5</b>
<b>Balance (as of 8/31/2022)</b>		<b>2,143.3</b>	<b>\$162,963</b>	<b>71.3%</b>	<b>25.2%</b>	



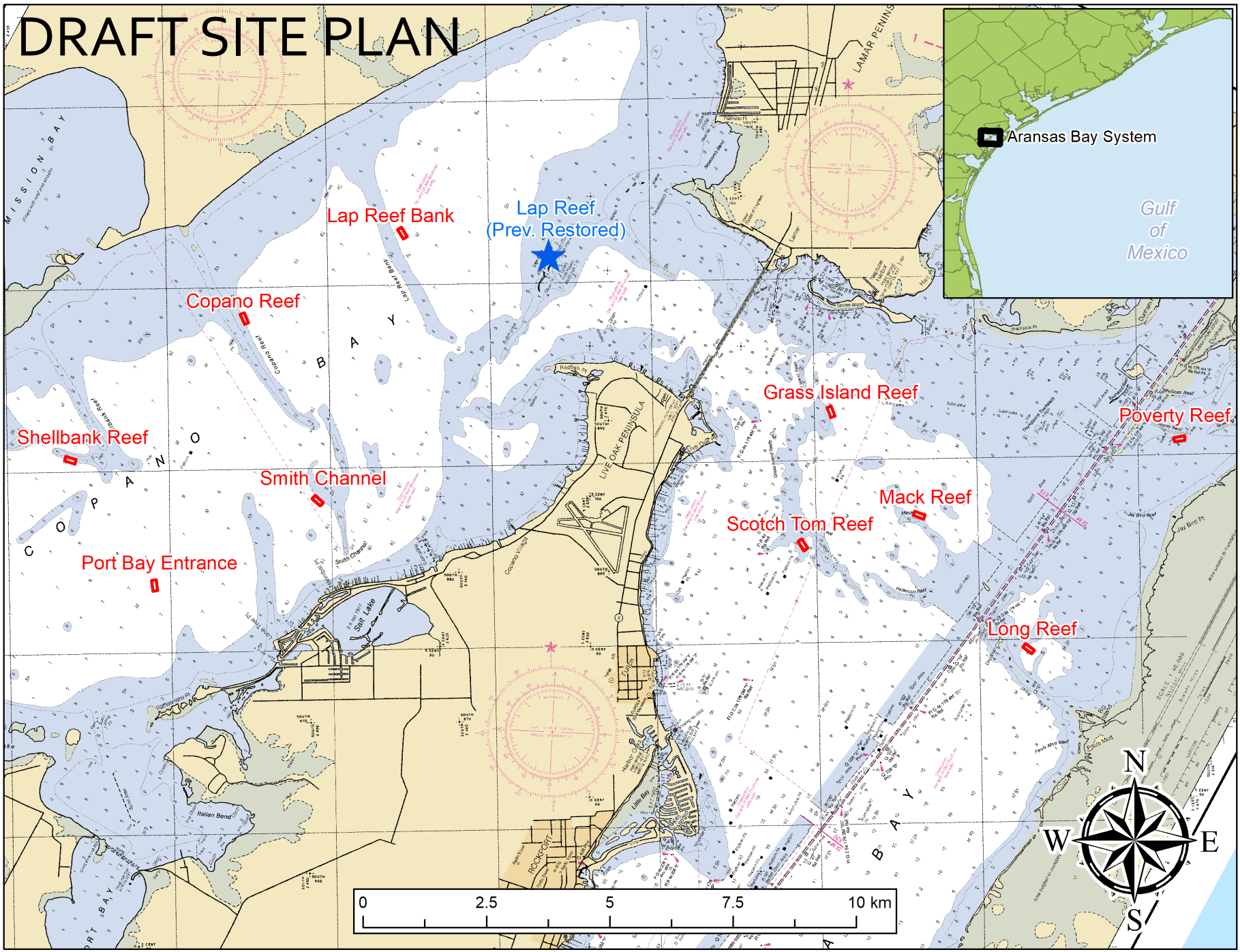
# Josephine's Reef Restoration



**Mound Height (ft)**

1 2





# Proposed Closure of Carlos, Mesquite, and Ayres Bays

- 3 ecologically important/sensitive bays
- Experienced increased harvest pressure
- Initial proposal tabled in March 2022
- Formed of 2 oyster work groups:
  - Regulation
  - Restoration

