

Diamond Lake Poweshiek County

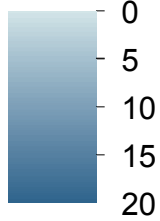
Contour interval is two feet.



Maximum Depth - 19.8 ft
Mean Depth - 7.2 ft
Area - 98.7 acres
Volume - 714.1 acre-ft

Lake mapped August 2013
Depths adjusted to crest
Horizontal Datum NAD 83
Coordinates are UTM Zone 15
ArcGIS 10.0 Basemap Imagery

Depth



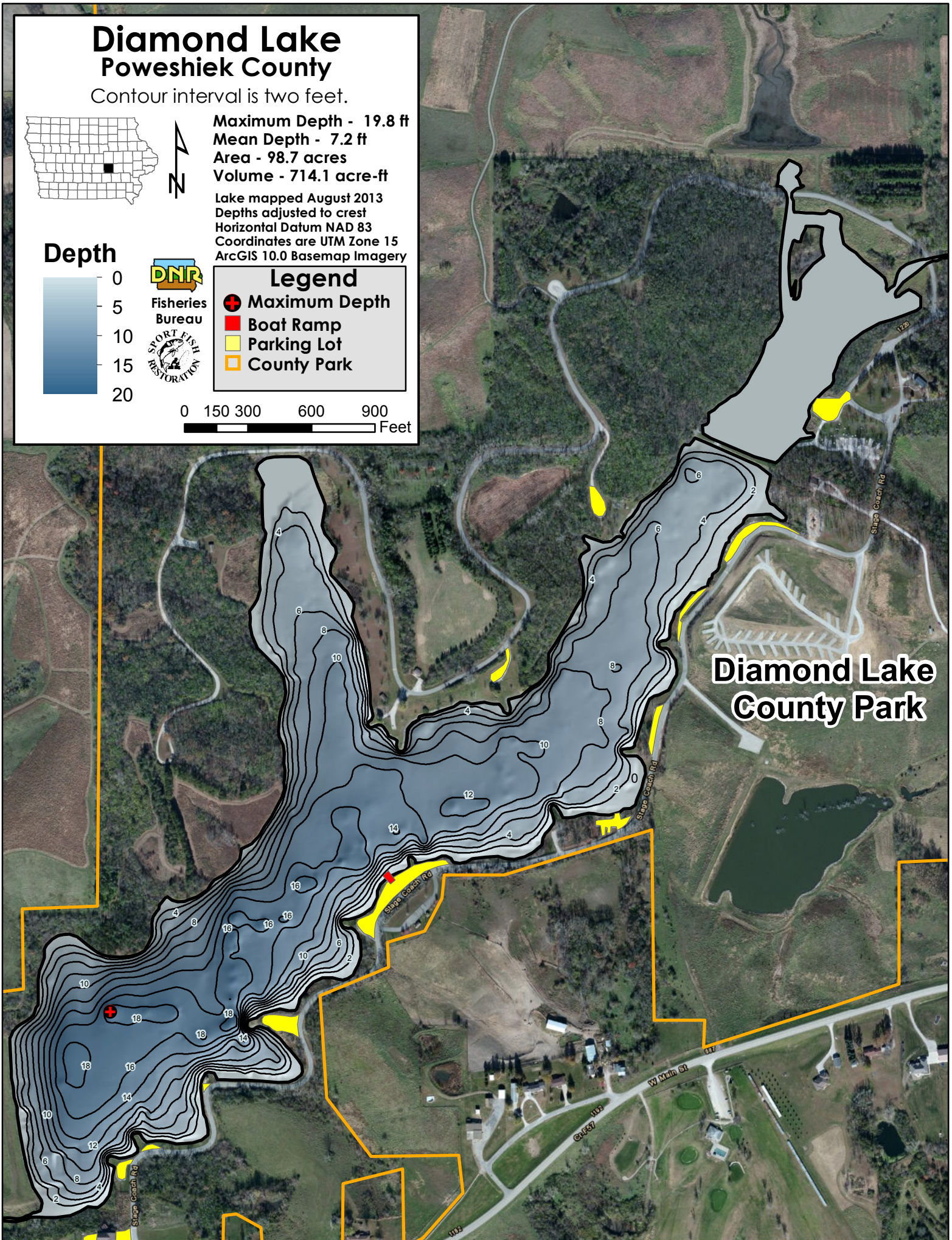
Fisheries
Bureau



Legend

- Maximum Depth
- Boat Ramp
- Parking Lot
- County Park

0 150 300 600 900
Feet



Diamond Lake County Park