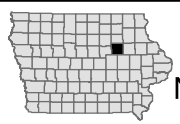
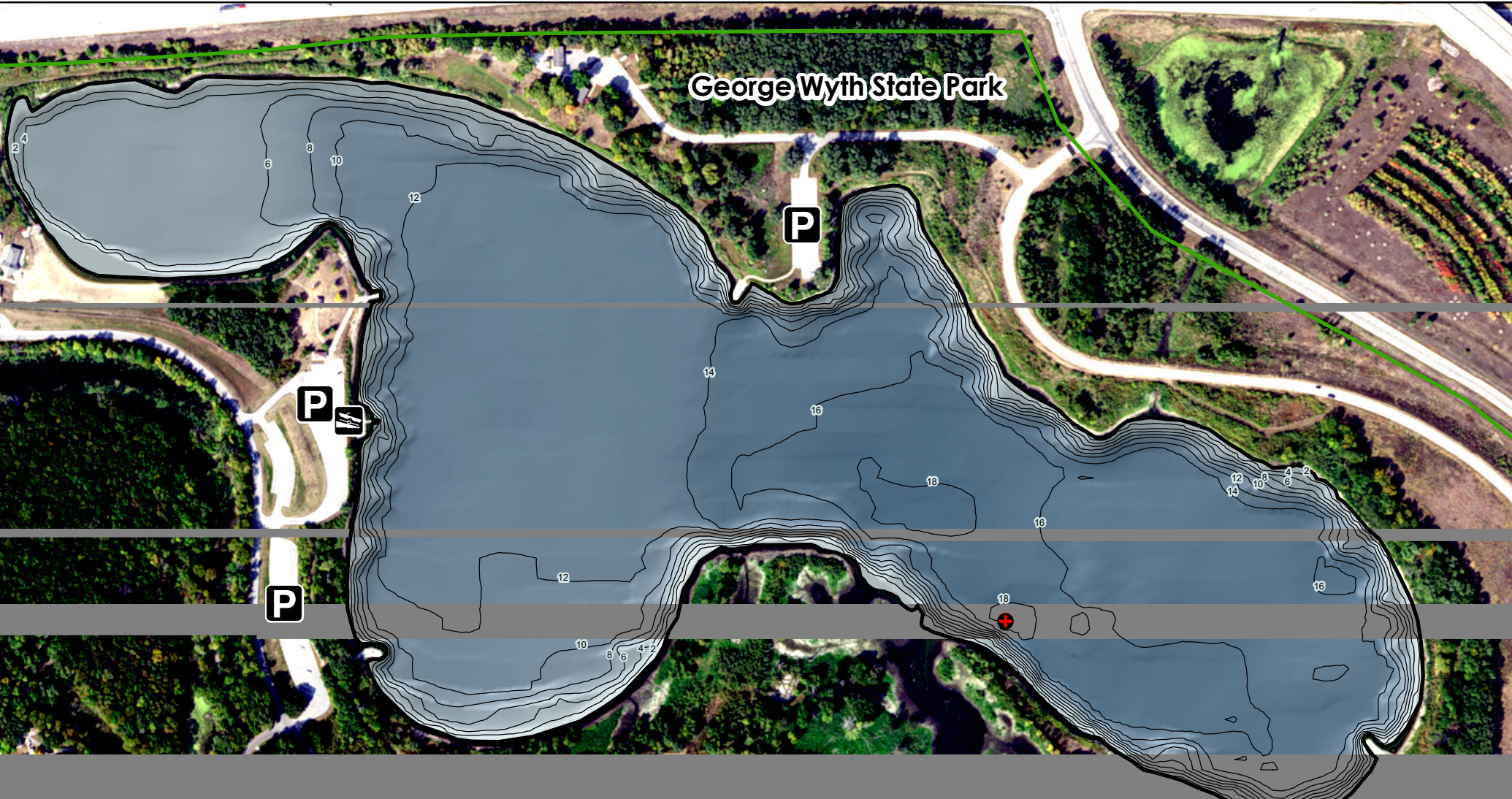
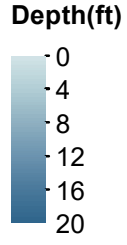


George Wyth State Park



George Wyth Lake Black Hawk County

Contour interval is two feet.



Maximum Depth - 18.8 ft
Mean Depth - 11.5 ft
Area - 75.2 acres
Volume - 853 acre-ft

Lake mapped May 2022
Depths adjusted to crest elevation
Horizontal Datum NAD 83
Coordinates are UTM Zone 15
NAIP 2017 Aerial Photography

Legend

- Max Depth
- Boat Ramp
- Parking
- DNR - Parks

