

Mill Creek Lake

Obrien County

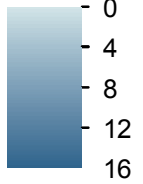
Contour interval is two feet.



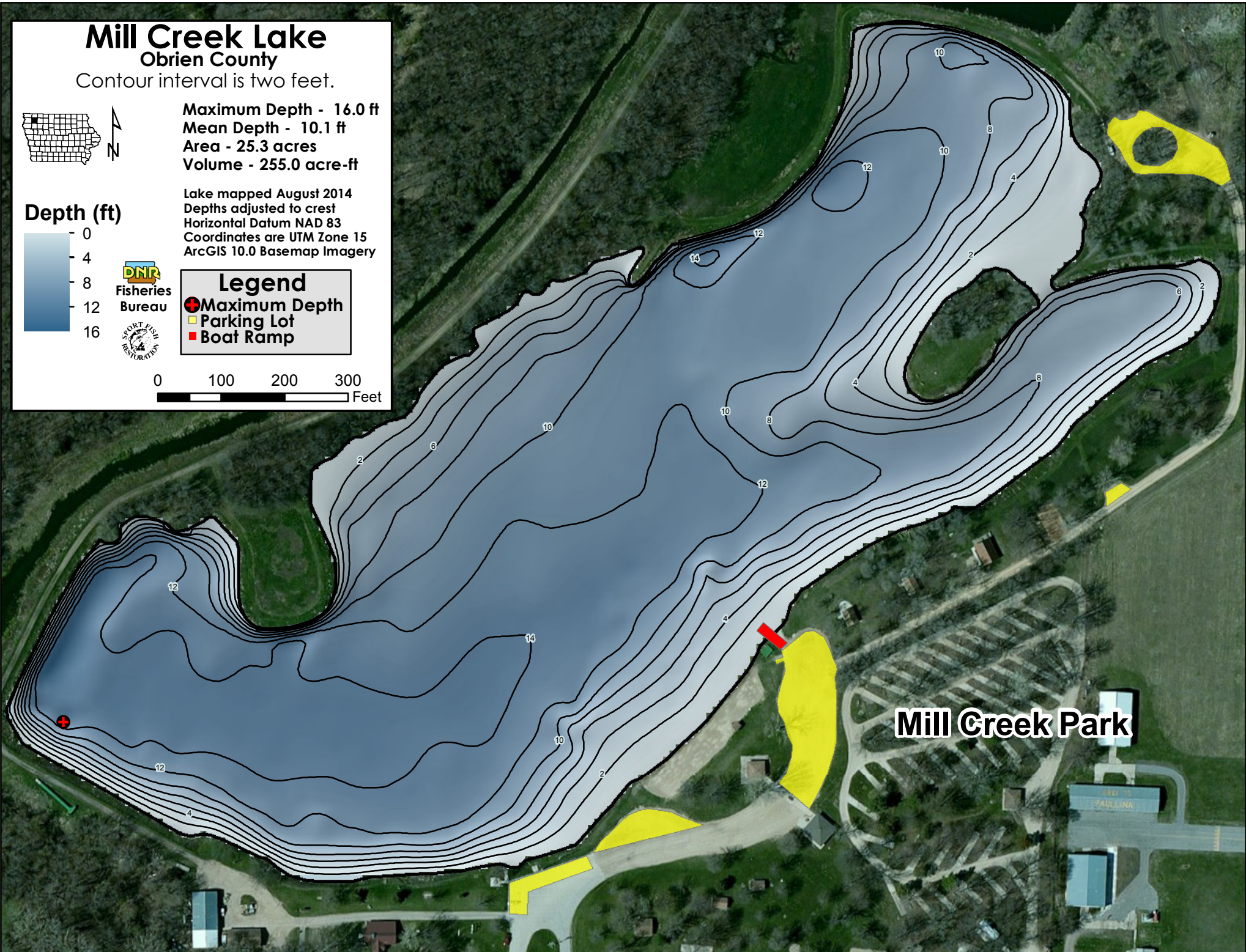
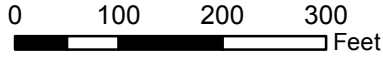
Maximum Depth - 16.0 ft
Mean Depth - 10.1 ft
Area - 25.3 acres
Volume - 255.0 acre-ft

Lake mapped August 2014
Depths adjusted to crest
Horizontal Datum NAD 83
Coordinates are UTM Zone 15
ArcGIS 10.0 Basemap Imagery

Depth (ft)



Legend
● Maximum Depth
■ Parking Lot
■ Boat Ramp



Mill Creek Park