

Big Hollow Lake

Des Moines County



Fisheries Bureau

Contour Interval is three feet

Maximum Depth - 46 ft
Mean Depth - 22.4 ft
Area - 178 acres



0 320 640 1,280 1,920 2,560 Feet

Fishing Structure

Gr Gravel

Ot Other

Th Trees Hardwood

+ Maximum Depth

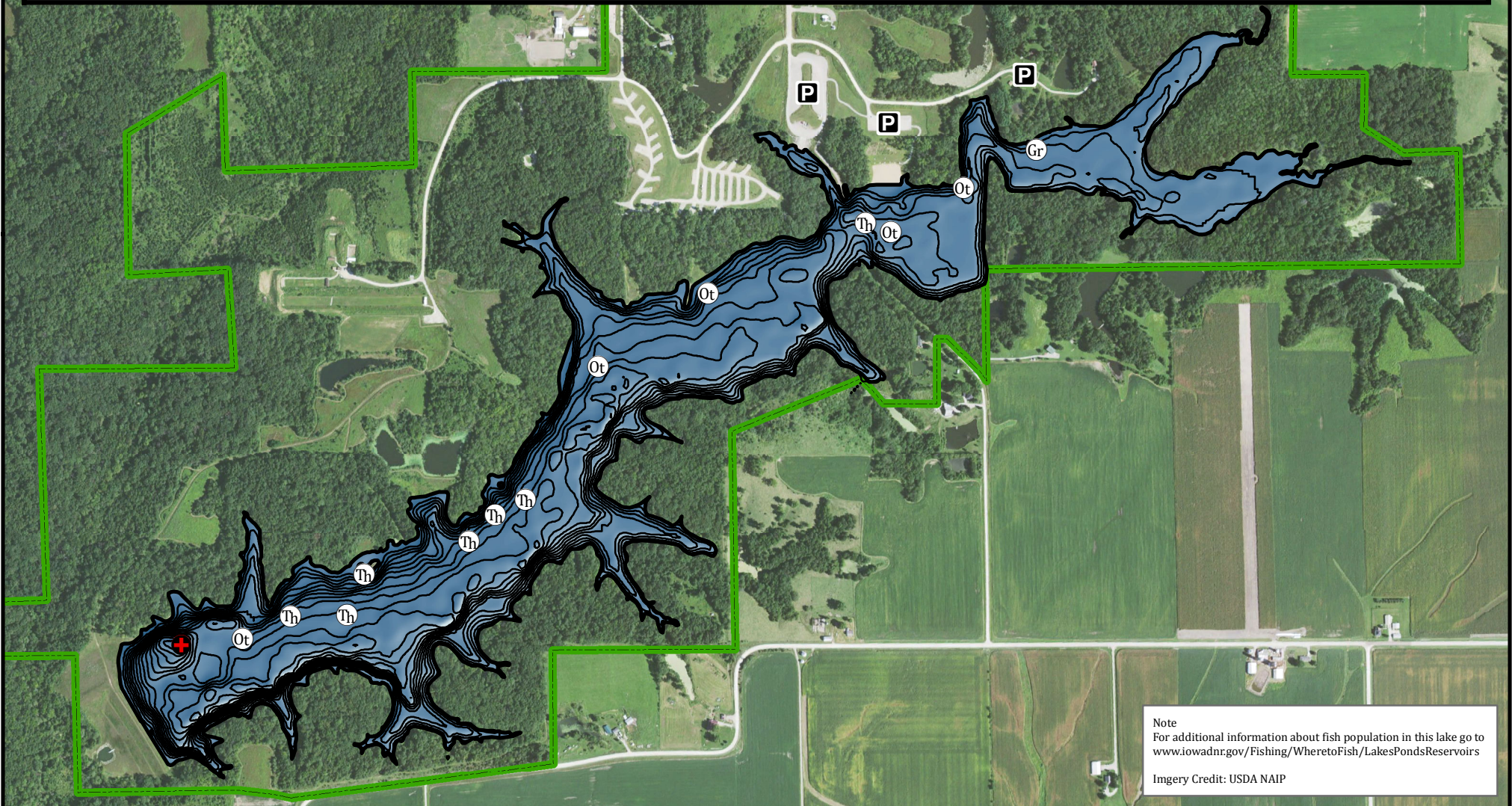
P Parking

Boat Ramp

Public Area

GPS Coordinates for the fishing structures below can be downloaded from a GPX file located at www.iowadnr.gov/Fishing/Fishing-Maps

Depth adjusted to crest elevation
Horizontal Datum NAD 83
Coordinates are UTM Zone 15
Map Produced ; February 2017



Note
For additional information about fish population in this lake go to www.iowadnr.gov/Fishing/Wheretofish/LakesPondsReservoirs

Imery Credit: USDA NAIP