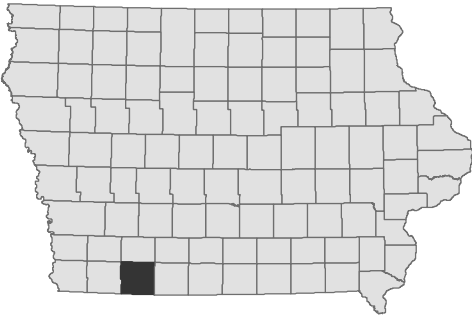


# Sands Timber Lake

## Taylor County



Contour Interval is two feet

Maximum Depth - 15 ft  
Mean Depth - 6.8 ft  
Area - 60 acres

Depth adjusted to crest elevation  
Horizontal Datum NAD 83  
Coordinates are UTM Zone 15  
Map Produced ; February 2017

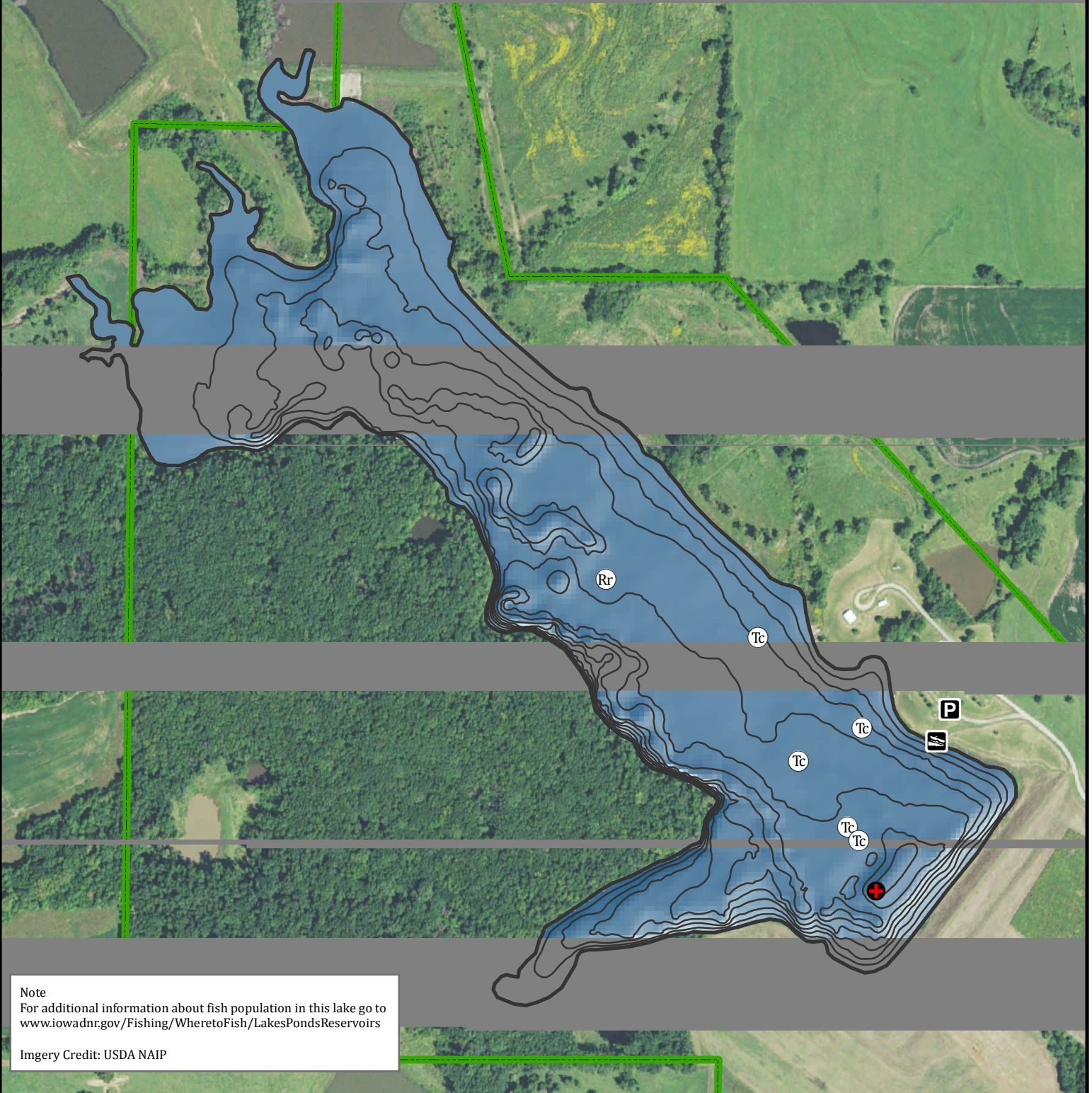
- Maximum Depth
- Parking
- Boat Ramp
- Public Area

### Fishing Structure

- Rock Reefs
- Trees Cedar

GPS Coordinates for the fishing structures below can be downloaded from a GPX file located at [www.iowadnr.gov/Fishing/Fishing-Maps](http://www.iowadnr.gov/Fishing/Fishing-Maps)

0 145 290 580 870 1,160 Feet



Note  
For additional information about fish population in this lake go to [www.iowadnr.gov/Fishing/Wheretofish/LakesPondsReservoirs](http://www.iowadnr.gov/Fishing/Wheretofish/LakesPondsReservoirs)

Imagery Credit: USDA NAIP