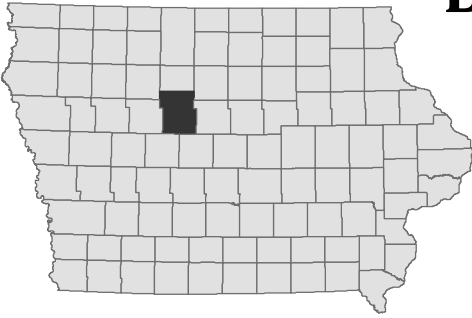


# Brushy Creek Lake

**DNR** Webster County



Fisheries Bureau

Contour Interval is four feet

Maximum Depth - 77.5 ft  
Mean Depth - 12.2 ft  
Area - 709 acres

Depth adjusted to crest elevation  
Horizontal Datum NAD 83  
Coordinates are UTM Zone 15  
Map Produced ; February 2017



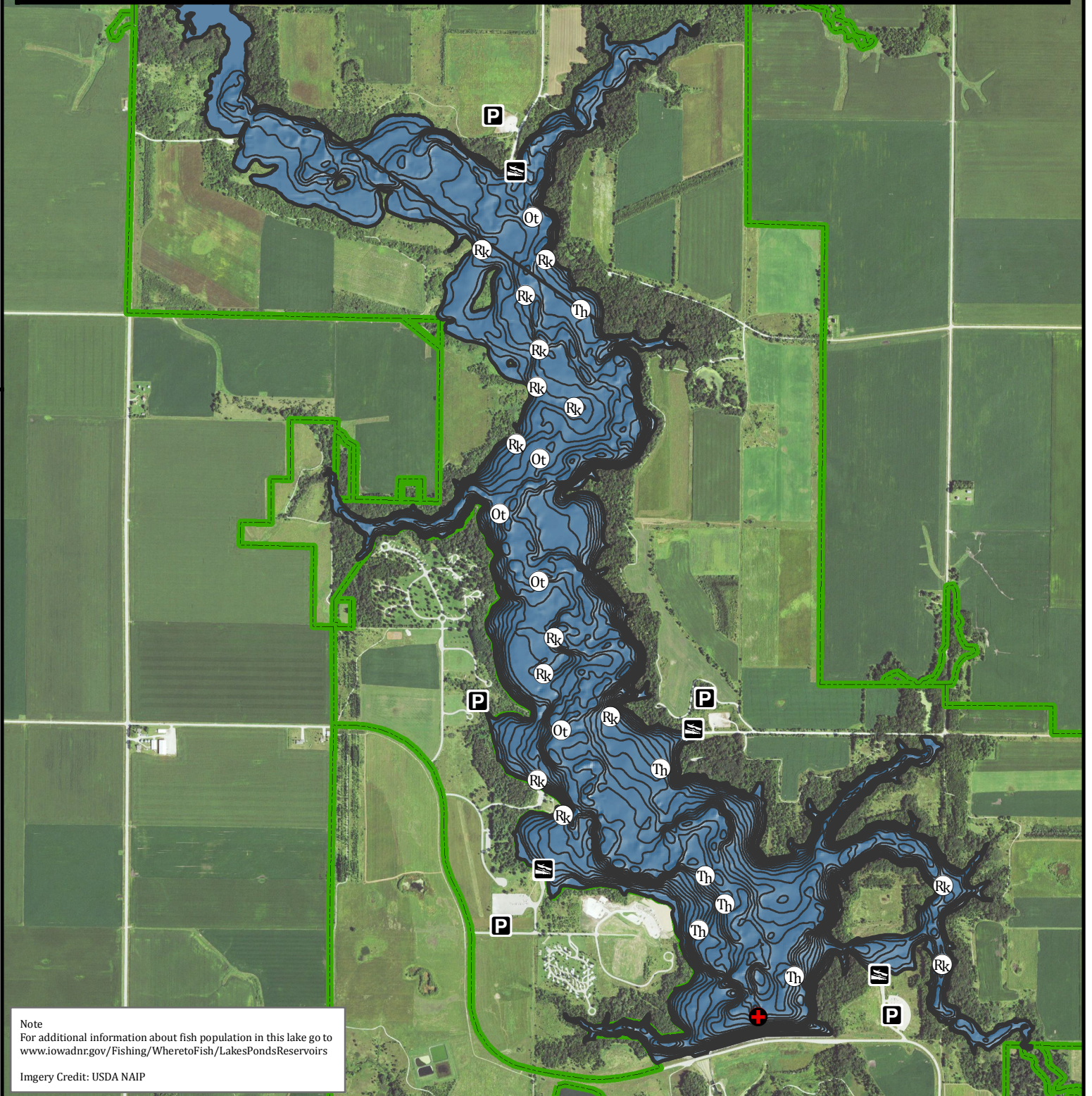
0 550 1,100 2,200 3,300 4,400 Feet

- Maximum Depth
- Boat Ramp
- Parking
- Public Area

## Fishing Structure

- Other
- Rocks
- Trees Hardwood

GPS Coordinates for the fishing structures below can be downloaded from a GPX file located at [www.iowadnr.gov/Fishing/Fishing-Maps](http://www.iowadnr.gov/Fishing/Fishing-Maps)



Note  
For additional information about fish population in this lake go to [www.iowadnr.gov/Fishing/Wheretofish/LakesPondsReservoirs](http://www.iowadnr.gov/Fishing/Wheretofish/LakesPondsReservoirs)

Imagery Credit: USDA NAIP