

# Grays Lake

## Polk County

Contour Interval is two feet

Maximum Depth - 13.9 ft  
Mean Depth - 13.8 ft  
Area - 96 acres



Fisheries  
Bureau

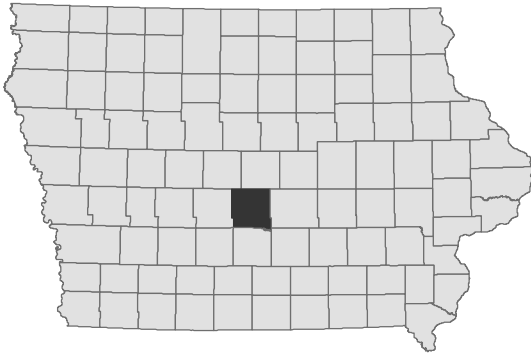
### Fishing Structure

Tc Trees Cedar

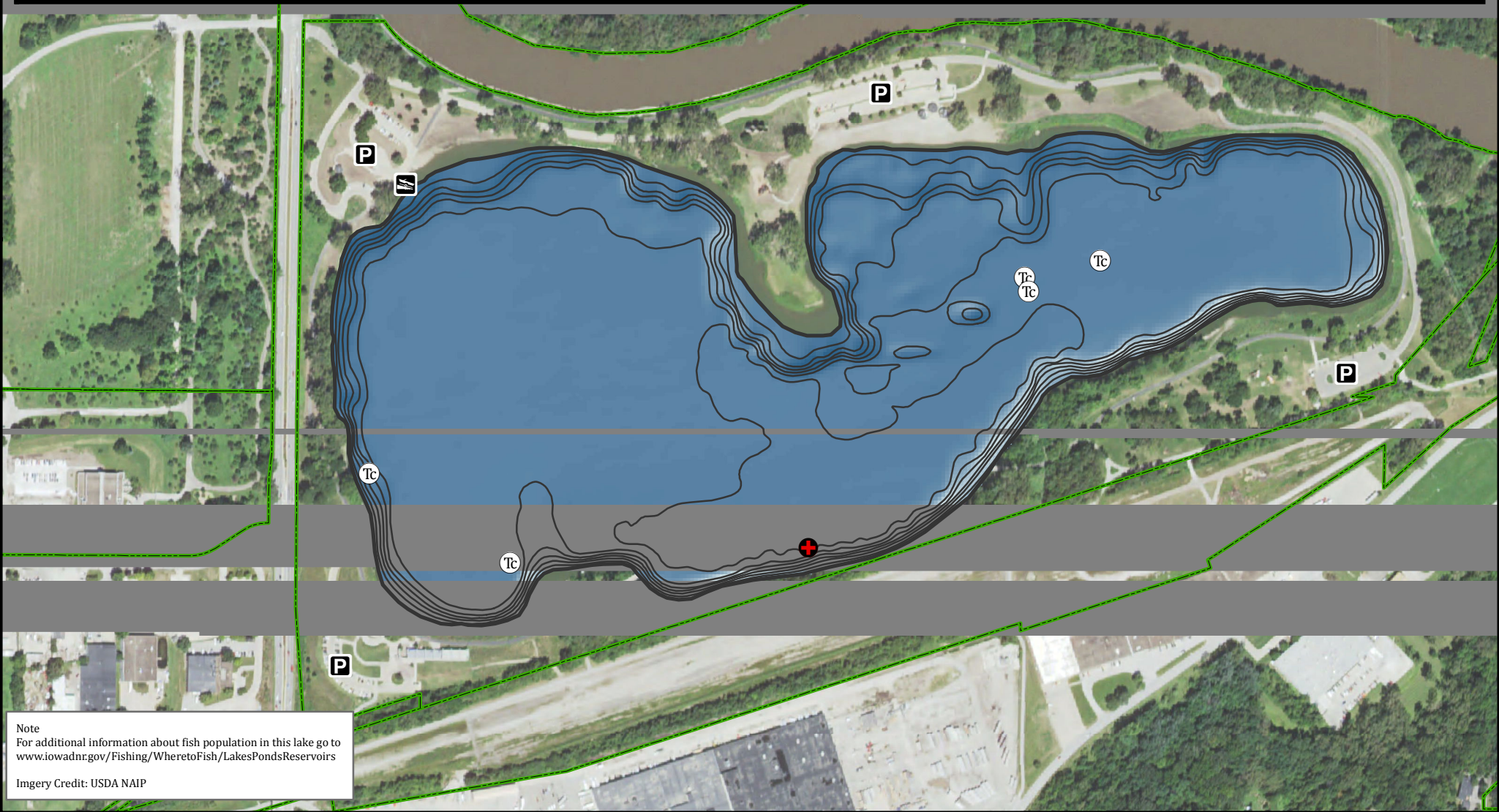
- Maximum Depth
- Parking
- Boat Ramp
- Public Area

GPS Coordinates for the fishing structures below can be downloaded from a GPX file located at [www.iowadnr.gov/Fishing/Fishing-Maps](http://www.iowadnr.gov/Fishing/Fishing-Maps)

Depth adjusted to crest elevation  
Horizontal Datum NAD 83  
Coordinates are UTM Zone 15  
Map Produced ; February 2017



0 160 320 640 960 1,280 Feet



Note  
For additional information about fish population in this lake go to [www.iowadnr.gov/Fishing/Wheretofish/LakesPondsReservoirs](http://www.iowadnr.gov/Fishing/Wheretofish/LakesPondsReservoirs)

Imagery Credit: USDA NAIP