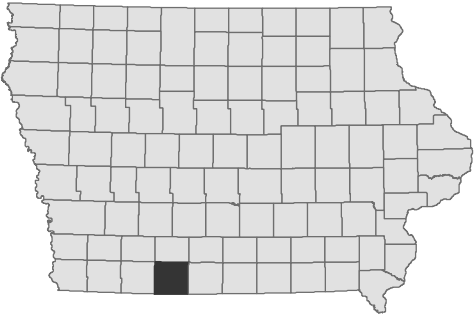


# Loch Ayr Ringgold County



Fisheries  
Bureau

Contour Interval is three feet

Maximum Depth - 17.9 ft  
Mean Depth - 6.1 ft  
Area - 83 acres

Depth adjusted to crest elevation  
Horizontal Datum NAD 83  
Coordinates are UTM Zone 15  
Map Produced ; February 2017

0 200 400 800 1,200 1,600 Feet

## Fishing Structure

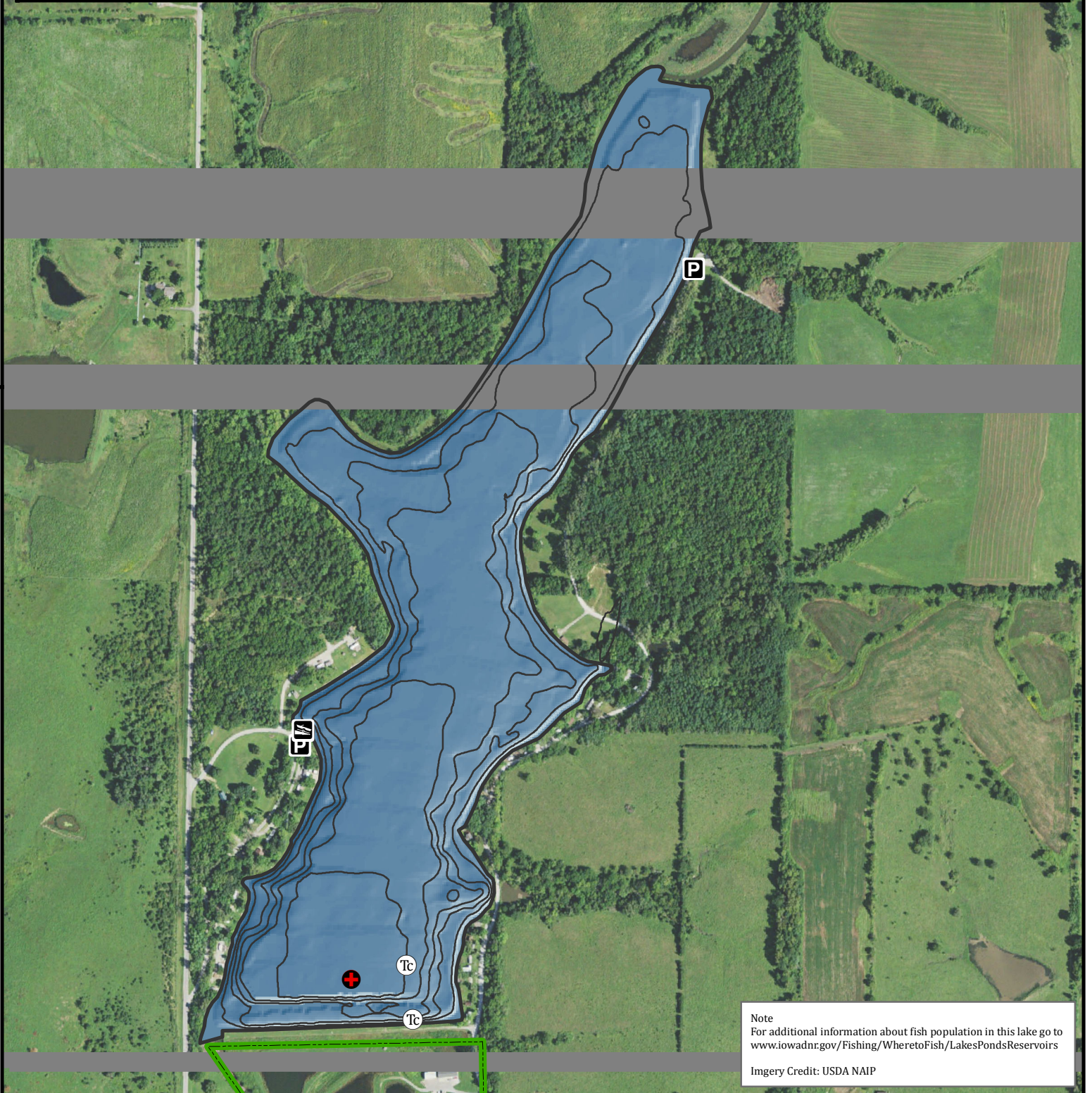
Tc Trees Cedar

+ Maximum Depth

P Boat Ramp

Public Area

GPS Coordinates for the fishing structures below can be downloaded from a GPX file located at [www.iowadnr.gov/Fishing/Fishing-Maps](http://www.iowadnr.gov/Fishing/Fishing-Maps)



Note  
For additional information about fish population in this lake go to [www.iowadnr.gov/Fishing/Wheretofish/LakesPondsReservoirs](http://www.iowadnr.gov/Fishing/Wheretofish/LakesPondsReservoirs)

Imger Credit: USDA NAIP