

Lost Grove Lake

Scott County

Contour Interval is four feet



Fisheries Bureau

Maximum Depth - 62 ft
Mean Depth - 26 ft
Area - 400 acres



0 400 800 1,600 2,400 3,200 Feet

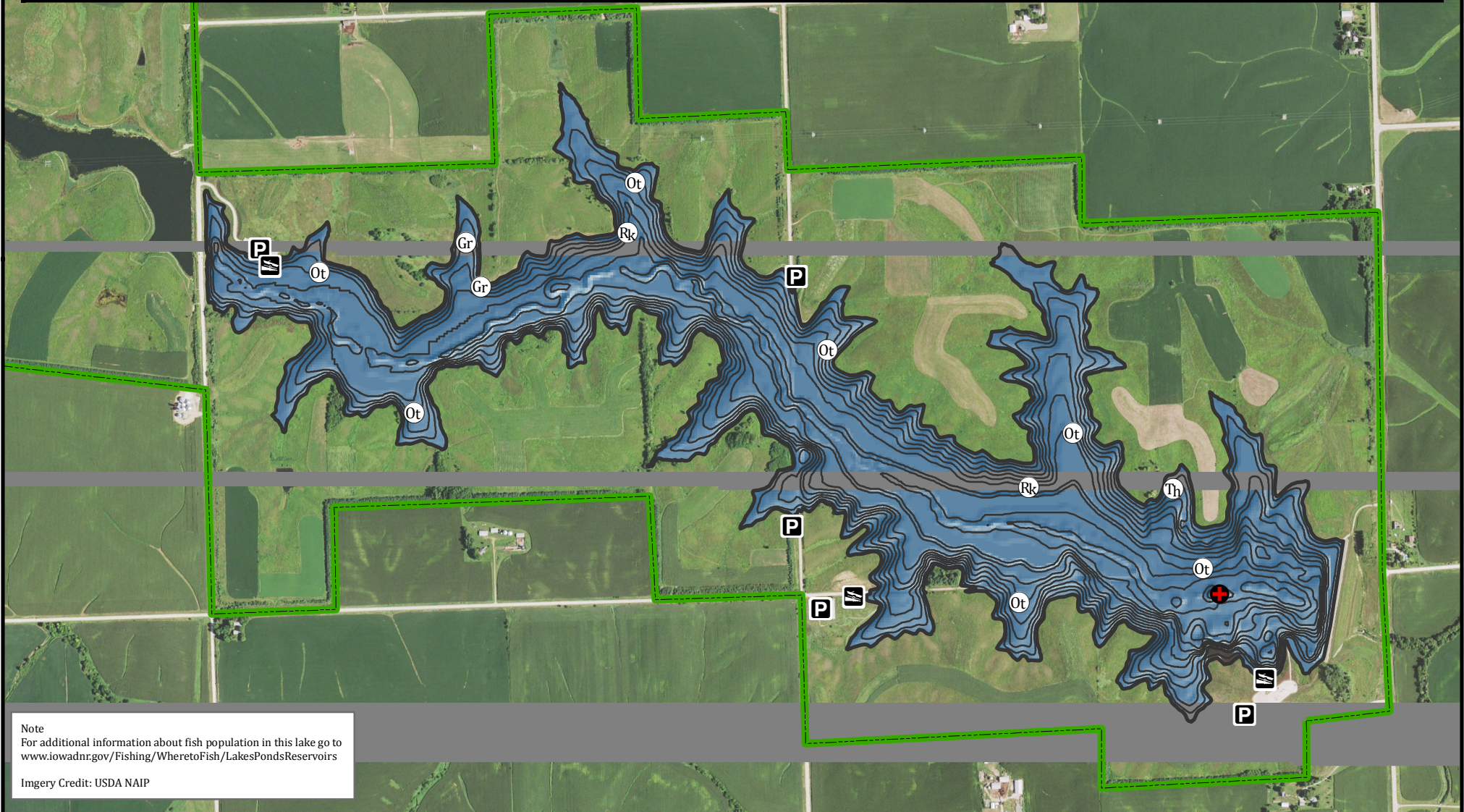
- Maximum Depth
- Parking
- Boat Ramp
- Public Area

Fishing Structure

- Gravel
- Other
- Rocks
- Trees Hardwood

GPS Coordinates for the fishing structures below can be downloaded from a GPX file located at www.iowadnr.gov/Fishing/Fishing-Maps

Depth adjusted to crest elevation
Horizontal Datum NAD 83
Coordinates are UTM Zone 15
Map Produced ; February 2017



Note
For additional information about fish population in this lake go to www.iowadnr.gov/Fishing/Wheretofish/LakesPondsReservoirs

Imagery Credit: USDA NAIP